

# *Living Villages*

*September 2024*

*Water Newton Thornhaugh  
Stibbington Sutton Wansford*



Call us today to book your  
free appointment

---

# Heritage Wills

Peace of mind when you need it most



Will Writing



Client Care  
Package



Lasting Power  
of Attorney



Agricultural  
Property Relief



Trusts



Corporate  
Benefit Package



Property  
Protection Trusts



Tennants in  
Common



Probate Services



Property  
Title Change

---

01480 465855 | [heritagewills.co.uk](http://heritagewills.co.uk)

HLC Business Centre, 5 The Quay, St Ives,  
Cambridgeshire, PE27 5AR

Dear readers

We open with two pleas. The first is from Christie Hall. The committee has shrunk over the years and they desperately need a new Secretary or the future of the Hall could be in jeopardy. Interested parties can contact Lisa Chambers at [lisa.chambers138@gmail.com](mailto:lisa.chambers138@gmail.com), and full details are on page 22. The second is from Thornhaugh Church – on page 12 you'll read the plans to use the community space a lot more, and local residents are invited to get involved.

As we hopefully enjoy a late summer and the school's reopen, there's still a few jobs to do around the garden, as highlighted by this month's informative Horticultural Column on page 24. The late summer always shows the villages in full bloom too, so enjoy your walks around the country lanes and rural pathways. I'm sure I don't need to remind our readers not to litter, but there are those who are less informed about ruining the beauty of the countryside – thank goodness there are teams of volunteers, like those in Thornhaugh (on page 18) who strive to keep our villages clean.

The Peterborough Freemasons are once more opening their doors on September 7th. Freemasonry is a wonderful and rewarding pastime for those involved, allowing them to be of service to their communities in a much broader way, and if you've ever wanted to find out more, now is the time, all the details are on page 20.

At time of writing, we are approaching the summer bank holiday, so I'm sure next month's edition will hold reports of the various village events, not least the much publicised Water Newton music festival. Watch out for that in October's edition, and indeed if anyone has a contribution to your local village magazine, please submit it by the 20th September. Contact details are on page 26.

Enjoy the rest of the summer.

Best wishes

Craig

## Contents

- 6 Worship & Benefices
- 11 Stibbington and Wansford W.I.
- 16 Parish Council Notices and Minutes
- 22 Cricket Fixtures
- 24 Horticultural Society
- 26 Contacts



**HOME**  
MORTGAGE SOLUTIONS LTD

THERE FOR YOU EVERY STEP OF THE WAY  
Whole of Market . Critical Illness. Solicitor Liaison. Total Protection

**01205 631330**  
**kate@homemortgagesolutions.uk**  
**www.homemortgagesolutions.uk**

\*Your home may be repossessed if you do not keep up repayments on your mortgage

**WANSFORD  
COMMUNITY HALL**  
Peterborough Road, Wansford

This hall accommodates parties of up to 36 people seated. Ideal for Meetings, Workshops, Aerobics etc

GREAT VALUE AT ONLY £4 per hour  
FOR BOOKINGS TELEPHONE  
clerk@wansford-pc.gov.uk

**BCN  
MULTICLEAN**

Dry carpet cleaning and upholstery cleaning services in Peterborough and the surrounding areas.

Whether you have an individual chair or carpet in a domestic property, or are interested in contract carpet cleaning in your business, you can benefit from our 35 years experience.

Telephone: **01832 280429**  
Mobile: **07951 124374**  
Email: **info@bcnmulticlean.co.uk**

**Woodland Timber Products**  
Fencing, Play Houses, Gates  
Pet Housing, Sheds

**01780  
783983**

Unit 4, Leedsgate Farm Business Park.  
Kings Cliffe Road, Wansford PE8 6NX.  
07748 787360  
[woodlandtimber.products@yahoo.com](mailto:woodlandtimber.products@yahoo.com)




*Capitol Lettours* Your local property agent  
With over 30 years of experience  
Relocation, Lettings and Sales

Please call our office for a competitive quote

Peterborough - 01733 553366  
(enquiries@capitollettors.com )  
[www.capitollettors.com](http://www.capitollettors.com)



**GRIFFIN**

**Solid Fuel Merchant  
Supplier of Pre Packs**

Coal Bunkers Charcoal Compost  
Flo Gas Logs & Sticks Salt

<b>Coal Yard</b>	<b>Office</b>
Station Road	12 Church Hill
Nassington	Castor
01780 782540	01733 380470

**BARKLEYS GARDEN SERVICES**  
Your LOCAL Gardening Team

Regular garden maintenance  
Lawn care and mowing  
Hedge trimming

Lady gardener available  
Get in touch by calling  
Bev - 07593 721144  
Peter - 07747 502471  
[beverleybarkley1@gmail.com](mailto:beverleybarkley1@gmail.com)





# NEED A RECOMMENDATION?

The **ONLY** DBS Checked  
recommended register of  
local approved traders



**FREE** and **EASY** service

**safe local trades.com**

★★★★★



Recommended & Approved

Much more than just a recommendation ...

## Serving the PE Postcode community since 2008

Over 70 different trade categories and over 18,000 reviews

Here are some of our members ...

**New Garage Door & Repairs**



**GARAGE DOOR &  
SHUTTER SERVICES**

[www.garagedoorandshutterservices.co.uk](http://www.garagedoorandshutterservices.co.uk)

Call Dave on

**07709 337647**

**Electrician**

**OLD COURT  
ELECTRICAL**

[www.oldcourtelectrical.co.uk](http://www.oldcourtelectrical.co.uk)

Call David on

**07973 507420**

**Loft Insulation & Boarding,  
Cavity Wall Insulation**



**A TO Z  
ENERGY SOLUTIONS**

[www.atoz-energy.co.uk](http://www.atoz-energy.co.uk)

Call Leanne on

**07878 314562**

**Building & Carpentry Services**



**Steve Deprez & Son**  
Building • Brickwork • Carpentry

Presenting the past. Building the future.  
[stevedeprezbuilders@gmail.com](mailto:stevedeprezbuilders@gmail.com)

Call Steve on

**07414 292188**

**Gutter Cleaning & Repairs**

**THE  
GUTTER CLEAN  
COMPANY**

[www.guttercleancompany.com](http://www.guttercleancompany.com)

Call Jeremy on

**0800 179 9363**

**Roofing Specialist. Fascias,  
Soffits & Guttering**

**Synergy  
Roofing**

[www.synergyroofing.co.uk](http://www.synergyroofing.co.uk)

Call Simon on

**01733 711721**

**Kitchens & Bathrooms**

**APG BATHROOMS**

[www.apghomeimprovements.co.uk](http://www.apghomeimprovements.co.uk)

Call Aaron on

**01733 568651**

**Double Glazing Repairs**

**Nene Valley UPVC  
REPAIR & MAINTENANCE**

[www.nenevalleyupvcrepairs.co.uk](http://www.nenevalleyupvcrepairs.co.uk)

Call Andrew on

**01733 576397**

in association with ...



Cambridgeshire  
& Peterborough  
**ageUK**

CAMBRIDGESHIRE AND PETERBOROUGH  
AGAINST SCAMS PARTNERSHIP  
**CAPASP**

To see our full list of members and read all reviews just go to ...



**www.safelocaltrades.com**



**0800 014 1832**



The safest way to source local traders

Tear out page and keep

# WORSHIP DATES

Every Sunday 5.00pm - Zoom 'At Home' Service. Log in and phone details from Rev. Jane [jdtailby@aol.com](mailto:jdtailby@aol.com) 01780 782271

## St. Leonard's, Apethorpe

1 <sup>st</sup>	11.00 a.m.	Holy Communion
15 <sup>th</sup>	11.00 a.m.	Holy Communion

## St. Mary's and All Saints, Nassington

Every Thursday 9.30 a.m. Holy Communion BCP

1 <sup>st</sup>	8.15 a.m.	Holy Communion BCP
1 <sup>st</sup>	9.30 a.m.	Songs of Praise
8 <sup>th</sup>	9.30 a.m.	Holy Communion
15 <sup>th</sup>	9.30 a.m.	Harvest Festival
22 <sup>nd</sup>	3.00 p.m.	Craft Service and Activities

## St. Andrew's, Thornhaugh

1 <sup>st</sup>	9.30 a.m.	Morning Praise
15 <sup>th</sup>	9.30 a.m.	Holy Communion

## St. Mary's, Wansford

Every Wednesday 10.00 a.m. Morning Prayer

8 <sup>th</sup>	9.30 a.m.	Holy Communion
22 <sup>nd</sup>	9.30 a.m.	Holy Communion
29 <sup>th</sup>	10.00 a.m.	BENEFICE HOLY COMMUNION

## St. Mary's, Woodnewton

1 <sup>st</sup>	9.30 a.m.	Holy Communion
15 <sup>th</sup>	9.30 a.m.	Holy Communion
22 <sup>nd</sup>	8.30 a.m.	Holy Communion BCP

## St. Mary Magdalene's, Yarwell

8 <sup>th</sup>	11.00 a.m.	Holy Communion
15 <sup>th</sup>	3.00 p.m.	Methodist Service
22 <sup>nd</sup>	11.00 a.m.	Holy Communion

## CASTOR BENEFICE

We are still maintaining the following service pattern every Sunday in each of our **Parish churches** until further notice.

**Marholm** 9.00am - Holy Communion (Morning Prayer on 4th Sunday)

**Castor** 8.00am Holy Communion (said service) 10.15am - Sung Eucharist

**Sutton** 9.00am on 4th Sunday of the month - Holy Communion

Every **Wednesday** morning at **10am** there is a service of Holy Communion at **Castor**.

We still continue to celebrate

**Evensong via Zoom at 6pm every Sunday**, if you wish to join us please contact the Benefice office for the Zoom link and access code.

[admin.castor@btconnect.com](mailto:admin.castor@btconnect.com)

The next service at **St. John the Baptist, Stibbington** will be **Harvest Thanksgiving on Sunday 29th September at 6pm**, see separate poster.

**David Ridgeway**

## ST. JOHN THE BAPTIST STIBBINGTON

**HARVEST THANKSGIVING**

**SUNDAY 29th SEPTEMBER, 6pm**



**REFRESHMENTS WILL BE SERVED  
AFTER THE SERVICE**

**Do come and join us, you will be  
assured of a very warm welcome**

## REFLECTIONS

A bit of church architecture! If you walk into most churches you will notice how the building seems to be in two parts: the main part of the church where most

people sit, now with chairs or pews, which

is called the nave, and the area at the front around the altar called the chancel, often up a couple of steps as at Wansford, or even down a step as at Nassington – watch out for that one! Sometimes there are no steps between the two parts as in Thornhaugh or Yarwell, but there is still a sense of two different areas.

In past centuries, it was the chancel, the space in front of and around the altar that was “consecrated”, that was blessed and made holy, set aside, if you like. The nave was for the people, and not just for them to sit during the service. One thought was that it was called the nave because the space looked like an upturned boat (navis in Latin). Next time you are in church, look up and see if the roof looks like an upturned boat! We are so used to seeing the nave full of chairs or pews (we’ve got one example of each in our parish – Wansford with chairs and Thornhaugh with pews) but in the Middle Ages the nave would have been empty and people either stood or if they needed to, used seating around the edge of the church. This might have been the origin of the saying “The weak go to the wall”! The reason that there was no seating in the nave was because the space wasn’t just used for people to gather during a service, but as this was probably the largest space available to the community, and built more solidly of stone than many of the other village buildings, it was used for many other things as well as worship. In earlier times the nave could be the scene of trial by ordeal, storage space for the arms which every parish had to provide and a place for guild plays, processions, church ales (!) and business.

Thankfully, jumping back into the 21st century, we don’t use our churches for storing arms or for trials anymore, but in St. Mary’s and in St. Andrew’s we are following, or we might say, reviving the use of the church for benefit of the community outside the usual Sunday services. At both churches parish “business” is conducted by hosting parish council meetings, the WI and even as a polling station. The modern equivalent of “church ales” could be said to be our wonderful coffee mornings that are now held in both churches, and we have certainly had many varied entertainments, if not “guild plays and processions”, and yes, ale, well, wine and beer, have been served there! We are standing in a fine tradition!

We are always delighted when people ask to use our churches; we have had a book group, crafting, fundraising meetings and I’ve even taught an Old Testament training module for Readers in Wansford Church. (I hope that wasn’t too much of a “ordeal” for my students!) The point of all this is to say that St. Andrew’s and St. Mary’s are YOUR churches, and you are welcome! We are always delighted to share worship with you, but do keep an eye open for all the other activities we host as well. You will find an article in this Living Villages from Nikki about plans and ideas for Thornhaugh Church and we are always open to other suggestions for both churches. Using our churches for all these activities remind us as well, that God isn’t just for Sundays; He cares for us in whatever we are doing. He is as present with us as we drink coffee together (and eat cake!) as he is when we share Communion together, he is present with us as much when we listen to great music or laugh at the “Wansford’s Got Talent” concert as when we sing hymns together. God delights in it all – come and join us!

*With every blessing,  
Revd. Jane*

***A date for the diary: 5<sup>th</sup> October - Thornhaugh Church***

***A concert of varied choral works by St. Peter’s Singers.***

***Further details in next month’s Living Villages or from Revd. Jane.***

***(01780 782271)***





## THE ARTS SOCIETY PETERBOROUGH

The Arts Society is a leading arts education organisation that brings people together through a shared curiosity for the arts. Each year The Arts Society Peterborough (TASP) holds nine illustrated talks given by experts in their field on subjects ranging widely, including old Masters, modern sculpture, silver jewellery, the work of David Hockney and music in art. The talks are held at

The Fleet in Fletton Peterborough on the second Thursday of each month except June, July and August. The talks start at 10.45 am but you are welcome to come earlier and meet like-minded people for a chat over a cup of coffee, doors open at 10.15am. Non-members are always welcome, so come and join us!

In addition to the live talks, annual members also receive other benefits. If you wish to find out more about our Society or about becoming a member, please visit our website, [www.the-arts-society-peterborough.org.uk](http://www.the-arts-society-peterborough.org.uk). Our next two talks are:

### 12<sup>th</sup> September 2024

**'The Genius of Rene Lalique'- by Andy McConnell (of Antiques Roadshow Fame).**

Rene Lalique was the 20<sup>th</sup> Century's greatest glass designer and entrepreneur. Andy will explore his unique visual sense and perfect understanding of glassmaking techniques.

### 10<sup>th</sup> October 2024

**'Great British Parks', by Paul Rabbitts**

This talk explores our Great British Public Parks, from the Royal Parks and Pleasure Parks of the 18<sup>th</sup> Century to their Victorian heyday.

**Perfect Drainage Solutions**  
Your Drainage Experts (est 2023)

Gutter Cleaning  
CCTV Drainage  
High Pressure Water Jetting  
Drain Blockage Clearance  
Tanker Service  
Repairs

**07817723610**  
[info@pdsLtd.co.uk](mailto:info@pdsLtd.co.uk)  
[www.perfectdrainagesolutions.co.uk](http://www.perfectdrainagesolutions.co.uk)

**OFTEC**  
Registered Business

**jc heating**  
SERVICES

**Oil boiler servicing and repairs, heating controls, hot water service and repairs.**

**Your local heating expert for over 15 years.**

**Jo Childs,**  
**8 Black Swan Spinney,**  
**Wansford.**

**Mob : 07729036942**

## THE SPECIALISTS IN HEALTH CARE



### Podiatry

#### Shock Wave Therapy now Available

InStep Foot Clinic is the only Podiatry Clinic within 30 miles to offer this treatment. *Beneficial for relieving pain and restoring function*, particularly: *Plantar Fasciitis, Achilles Tendinopathy, Tennis Elbow, ITBS, Shin Splints, Heel Spurs etc*  
Nail Surgery For Ingrown Nails, Biomechanics & Orthotics, Diabetic Foot Care, Verrucae, Corns, Cracked Heels, Calluses, Hard Skin, Nail Reconstruction



### Ear Wax Microsuction

**Ear Ache? Hearing Loss? Blocked Ears? Pre Hearing Test Clean?**

It could just be wax! Safe, Gentle and Effective Ear Wax Removal



### CryoAesthetics for Skin Lesions

Skin tags, Age/Liver Spots, Milia, Seborrheic Keratosis, Solar Lentigo, Cherry Angiomas, Verrucae, warts, Popular nevi (moles, birthmarks)

**You can self refer to us for immediate treatment**

**Home Visits Available**

**Sue Arnold BSc(Hons) MRCPod & Associates**

InStep Foot Clinic, 19 Elton Road, Wansford PE8 6JD

**Tel: 01780 782200**    [wansfordinstep@gmail.com](mailto:wansfordinstep@gmail.com)

**Now  
Accepting  
New  
Patients!**



Our family, caring for yours

### Castor Lodge Care Home

**Residential, Dementia  
and Respite Care**

Our care is the kind we'd all want our loved ones to receive. Castor Lodge is luxurious and beautifully furnished whilst retaining a warm, homely atmosphere.

**To book your tour call  
01733 731455**



Splash Lane,  
Castor, Peterborough,  
PE5 7BD



## The Friends of St Mary's and St Andrew's

There will be a Coffee Stop on **Wednesday 18th September** from 10.30am in St Mary's Church. All welcome.

**Caroline Ashley**

### NEWS FROM WANSFORD PHARMACY

Hello September!!

A wonderful mix of late summer sun and early Autumn colours.

Time to take stock. Our pharmacy can support you to....

Know Your Numbers week!

Blood Pressure UK raises awareness each year about blood pressure health.

The 2024 Know Your Numbers! Week takes place from September 2nd to 8th.

This 24th anniversary of the campaign's theme is "You Have the Power" which aims to...

- Encourage people across the UK to measure their blood pressure at home - we sell GP grade monitors at a great price
- Raise awareness about the importance of knowing your blood pressure numbers - our staff are available to help on this
- Prevent heart attacks and strokes by identifying undiagnosed high blood pressure - we offer a free NHS blood pressure checking service for those over 40 year olds who haven't been diagnosed with high blood pressure. It only takes a matter of minutes and no appointment is needed.
- It is critical to note, high blood pressure often has no symptoms, which is why it's called the "silent killer"

Knowing your numbers allows you to take steps to manage your blood pressure and health, which leads us to another annual celebration, National Fitness Day.

It will take place on Wednesday, September 18th, with the theme "Your Health is for Life". This campaign, initiated by "Ukactive", aims to highlight the significance of regular exercise and its benefits for both physical and mental health across all age groups and backgrounds.

Individuals can participate by:

- Finding local events or creating their own.
- Trying new fitness classes or activities.
- Sharing their experiences on social media using the hashtag #NationalFitnessDay.

National Fitness Day not only aims to inspire people to be active for a day but also encourages a sustained commitment to health and fitness as a lifestyle choice.

From blood pressure checks and tailored weight management services, to knee supports, our pharmacy is proud to offer the tools to facilitate a healthier you.



## STIBBINGTON & WANSFORD WI

### Today's women working for tomorrow's world



August's monthly meeting traditionally is our summer social evening, and this year we were kindly hosted by one of our member's Jan Armitage.

It was a lovely evening. The weather was perfect, Jan has a lovely garden which was a beautiful back drop for our event. We were able to catch up with old friends, and reflect on the speakers we have had this year already. Jan, St Clair and Monty the dog made us feel very welcome. Thanks for being great hosts.

We are now looking forward to September, especially our annual coffee morning. Readers of this magazine will know that we have been long time supported of this wonderful charity, and have always appreciated the support of the village, helping us to send money to Macmillan for their ongoing support that they offer for those fighting cancer.



*Our annual coffee morning in support of Macmillan will be on 28<sup>th</sup> September 2024. This will be*

*at St Mary's Church from 10.30am onwards.*

*Please join us for a coffee and cake, raising money for Macmillan cancer support.*

Now it is summer our monthly meeting will take place in St Mary's Church, for the other meetings, please check each individual event. If you wish to attend one of our upcoming meetings to hear one of our visiting speakers, please get in touch. Please see below for our upcoming events:

**Tuesday 10th September 2024 W.I. meeting 7pm.** Wood is my business, speaker Paul Brumfield. St Mary's Church

**Tuesday 3rd & 17th September 2024, 2-4pm Coffee, Cake & Craft club,** at Wansford Community Hall

**Thursday 5th September 2024, 7.30pm Book Club meeting,** at The Cross Keys Wansford, Note change of date.

Both the Coffee & Craft club, and Book Club are open to all, (not just for WI members) and we look forward to others joining us.

## Thornhaugh Community Space; Let's use it!

**Coffee, Cake and Community**, on the first Friday of the month in Thornhaugh church, has been well received. The plan was to only have in the summer months but we hope to continue on depending on demand. Please look on Facebook or email me [nikki@4stonecottage.co.uk](mailto:nikki@4stonecottage.co.uk) for any information. The next date is September 6th.

Particularly in Thornhaugh, the church is our only community space. The church is used only twice a month for Services, but that's not just what it is there for. It is a great space for people to meet and to get together for many different reasons. If you want to use the church as a community space then please make contact as we are keen to see the beautiful building used as much as possible.



During the winter, I am looking at regular **Friday night Talk and Social evenings** with a strong social element and refreshments.

**October 5th sees St Peter's Singers in concert, then on October 25th Gavin Elsey, our elected Peterborough City councillor, will take us through the various tiers of politics from Lords, MP's, councils, combined authorities and how they all fit into the decisions that affect you.** Hopefully it will all make sense by the end of the evening.

We have other speakers planned but we are looking for suggestions or volunteers to share their interests in a short talk over the winter. Do contact me if you can help or have ideas.

I would hate to see our church close so please do use the building. Also you can easily support it financially, for free, using the **easy fundraising shopping cash back site - here's the link:**

**[www.easyfundraising.org.uk/causes/stmaryswansford-standrewsthornhaugh/?utm\\_medium=email&utm\\_campaign=pmc&utm\\_content=gs-email1](http://www.easyfundraising.org.uk/causes/stmaryswansford-standrewsthornhaugh/?utm_medium=email&utm_campaign=pmc&utm_content=gs-email1)**

If anyone would like to help me on this mission I would be very grateful. Many thanks as always,

Nikki Higgins



# H HEARTYS

*of Peterborough*

Car buying made easy with over 30 vehicle manufacturers on site and 200+ cars in stock

Fantastic part exchange prices offered with fully comprehensive warranty on all purchases

*Peace of mind motoring for over 50 years*  
[www.heartysofpeterborough.co.uk](http://www.heartysofpeterborough.co.uk)

01733 560605  
 Unit 10 Flaxley Road,  
 Peterborough, PE2 9FT

## THE CHRISTIE HALL

Elton Road, Wansford  
 (registered charity no 1033998)

A well-equipped hall  
 with large kitchen and parking.

**Available for parties, receptions,  
 meetings, activity groups  
 and most types of private functions**

For more information and details on how to book  
 visit our website

[www.christiehall.co.uk](http://www.christiehall.co.uk)

## MOBILE HAIRDRESSING

Ladies & gents hairdresser with over 30 years experience.



If you are housebound, have reduced mobility, no transport or simply prefer the convenience of having your hair done at home, I have daytime appointments available. Fully insured. Competitive prices.

**Please call Tracey on 01780 782467**






**At Wittering Primary School, our children have excellent behaviour, they feel happy and safe and have a wide range of opportunities and learning experiences**

**We have School Places Available Now**

Visit our website to see our School Life video and find out more about us at [wittering.peterborough.sch.uk](http://wittering.peterborough.sch.uk) or ring us on 01780 782336 to book a school tour

**Paws and Claws**

★ ★ ★ ★ ★

**Boarding Cattery**

*"Cats have a 'tail' to tell when they've 'paws'd' awhile at Wansford's 5 Star Purr Palace"*

**Tel 01780 782174**  
**e-mail**  
[pawsandclaws@hotmail.com](mailto:pawsandclaws@hotmail.com)



Working with Peterborough Cat Rescue to rehome cats and kittens seeking loving homes and laps on which to purr

Peterborough City Council & Rutland County Council  
 Licence Number: 078015



**Georgina's**  
 Curtains & Keepsakes

**Covering all the Villages Stamford to Stibbington (and everywhere inbetween!)**



Bespoke handmade curtains, roman blinds and soft furnishings to complement your home.  
 For a free consultation and quote call 07957 686595  
[www.georginascurtainsandkeepsakes.com](http://www.georginascurtainsandkeepsakes.com)

# PETER RIDDINGTON LANDSCAPING

We supply and install Patios & Pathways, Decking, Stone Walls and Fencing, We plant Trees, Shrubs Hedges and Flowers, and offer a complete Garden Maintenance and Improvement Service. Garden design service provided  
 Contact Peter Riddington today for a free quotation

4 LOCKS GREEN, YARWELL, PETERBOROUGH PE8 6PY  
 Telephone: 01780 783004 Mobile: 07860 962068  
 Email: [peter@peterriddington.co.uk](mailto:peter@peterriddington.co.uk)





# Helping people build successful businesses and personal wealth for almost a century

Our services include:

- Audit and Accountancy
- Business Acquisitions and Disposals
- Business Plans and Projections
- Corporate and Personal Taxation
- Grant Funding
- Payroll, Bookkeeping and VAT
- Tax Planning and Mitigation

For more information,  
please contact us:

 **01733 560160**  
[moorethompson.co.uk](http://moorethompson.co.uk)

Peterborough | Spalding | Wisbech | Market Deeping | Stamford

Moore Thompson is registered to carry on audit work in the UK  
by the Institute of Chartered Accountants in England and Wales.

## THORNHAUGH PARISH COUNCIL

A meeting Thornhaugh Parish Council was held on 29th July 2024 in St Andrew's Church. It was chaired by Chris Smith and present were Yana Clipsham, Louise Molesworth, Nicky Rogers, Gavin Elsey (PCC Ward Councillor) and Deirdre McCumiskey (Clerk).

There were apologies for absence from Camilla Plumb, Alan Frost and Joan Frost.

Police Matters - no crimes had been formally reported. There was an incident where a young woman was knocking on doors saying she had lost her rucksack with all her legal papers, etc that she had left at the phone box. Two residents mentioned this but were unable to help. No further information. The email received from the PC S Main was discussed - this which was a complaint that only Wansford Parish Council attended the Police Surgery held on 15th July 2024 at Wansford. It is hard to understand the value of meetings such as these when much of the response is that there is a lack of police resources. We had no specific issues to raise, and our only concern is that when we have an emergency, we get a swift response. Alongside so many other meetings it is difficult to find time to go to all of them. The Chair will draft a response to the email and circulate it to the Parish Councillors.

Highway Issues - the Chair had nothing to report on layby, etc. It is not expected that we will get a response until the 2025 budget submissions are made in National Highways. In terms of the A47 dualling works, the current contractor has withdrawn from the project and the whole works are out for re-tender. There are currently no timelines on the work.

Social Events - thanks were expressed to Nicky Rogers for all her work to date. There have been approximately thirty-six people who have responded to the invitation to the party which is being held on 31st August 2024. The event is now based on a summer picnic with residents bringing their own picnic and chairs. The cake competition will be judged by Alan and Joan Frost - cakes to be shared on the day by those attending once judging is complete. There will be a live band. The Parish Council will provide cheese, bread, pickles, etc. and Alan and Joan will provide lawn games, etc, and there will be a quiz designed by Karen Jones. Nicky is designing another flyer updating residents on the plans and hopefully getting more takers. So far so good. A final party meeting will be held on 23rd August 2024 to finalise plans. The marquee will be set up on the evening of Wednesday 26th August 2024 and we would much appreciate volunteers to help please.

Tubs and Flowers at the A1 Entrance to Thornhaugh - the tubs are in place and have been planted. Thanks to those residents who are keeping them watered.

Bill's Bench - Simon Hurn will repair this, but he cannot fit it in until winter - the approximate cost is £80.00. The Clerk will ask him to look at refurbishing other benches near to Bill's bench as well.

Defibrillator Training - Louise Molesworth will get an outline of the course content and an idea of what days/times would suit the tutor. Once this is known, the details will be included in a newsletter to find out what interest there is from residents.

Planning Applications - 19/01975/FUL - Variation of condition C2 (approved drawings to replace all approved uses for stable courtyard buildings with Class E use) pursuant to planning permission references 19/01795/FUL and 23/00867/WCPP at Sacrewell Farm And Country Centre, Great North Road, Thornhaugh - Permitted; 24/00210/MMFUL - Continuation of landfilling operations and the importation of clean naturally occurring materials to create an integrated restoration landform with nature conservation habitats at



Cooks Hole Quarry and Thornhaugh Landfill Site, Leicester Road, Thornhaugh – Permitted; 24/00555/FUL & 24/00556/LBC – to widen existing farm entrance by 2m at Manor Farm, Russell Hill, Thornhaugh – Withdrawn by the applicant; 24/00669/LBC – Alterations to barn including formation of blockwork and proposed rendering of blockwork – part retrospective at Manor Farm, Russell Hill, Thornhaugh – Refused; 24/00721/WCPP – Variation of condition C2 (drawings and documents) of planning permission 23/00852/FUL at Land Adjacent To Magnolia House, Old Oundle Road, Thornhaugh – Awaiting Decision. We had no objection; 24/00741/FUL – Erection of a replacement stable block at Magnolia House, Old Oundle Road, Thornhaugh – Awaiting Decision. We had no objection; 24/00737/LBC Repairs to internal ceilings and walls at Sacrewell Lodge Great North Road, Thornhaugh. Permitted; 24/00738/LBC Repairs to internal ceilings at Sacrewell Farm And Country Centre, Great North Road, Thornhaugh – Permitted and there has been concern expressed by a few residents about the installation of a UPVC window into The Rectory. Additionally, the guttering also seems to have been replaced with UPVC. A complaint has been made to Planning Compliance who have opened an enquiry. As far as we are aware, no planning application has been made.

Parish Councillor Vacancy – a resignation email had been received from Camilla Plumb who will leave the Parish Council with effect from 1st August 2024. The Clerk will manage the official paperwork with PCC. The vacancy notice will be posted on the noticeboard and on the website. If an insufficient number of residents request an election, we can go to co-optation.

Notice Board at Home Farm end of Thornhaugh – this has been removed whilst groundwork has been done. It has not yet been replaced. The Clerk has obtained quotes for a replacement (c.£750 excluding installation). The Clerk to ask costs of refurbishing existing board for comparative pricing. Gavin Elsey suggested we can apply via him for a grant from the Community Leadership Fund. The Clerk will manage the process. If we can get a grant to cover at least part of the cost, we should go for a new one which will be better in the longer term.

# COFFEE+ CAKE + COMMUNITY

## WHEN

**Friday**

**May 3rd, June 7th,**

**July 5th, August 2nd, Sept 6th**

**10.30 – midday or anything in between**

## WHERE

**Thornhaugh Church**

## COST

**£3**

**FEATURING • Cafetière coffee and delicious cakes.**

**In future we aim to have crafts, puzzles and games if there is interest.**

## EVERYONE WELCOME

**FUTURE EVENTS  
FIRST FRIDAY OF  
THE MONTH  
APRIL—  
SEPTEMBER**

**AT THE DOOR  
£3 for coffee and  
cake ( free for  
bakers).**

**CCC, A SPACE TO  
CATCH UP IN COM-  
MUNITY**

**QUESTIONS OR  
OFFERS TO BAKE**  
nikki@4stonecottage.co.uk

Thornhaugh & Wansford Parish Councils' Burial Ground Committee – the Burial Committee has been given approval to install a flagpole in the church grounds. The type of pole sourced has internal ropes to ensure there is no wind noise for residents. The T&WPCBGC will continue the purchase and installation process and consider which flags to purchase. The idea of designing a village flag has been put on hold pending the T&WPCBGCs' discussions.

The next Thornhaugh Parish Council Meeting will take place at **7.00 pm** on **16th September 2024** in St Andrew's Church, Thornhaugh.

## SIBSON-CUM-STIBBINGTON PARISH COUNCIL

The date of our next meeting is the **5th September, 2024**. A report will appear in the next issue of Living Villages.

Please note our new email address is [clerk@stibbington.org](mailto:clerk@stibbington.org).

## Thornhaugh Litter Pick Update

On the 17th August, four ladies cleared the Meadow Lane footpath to the A47, a large section of the A47 west bound, Russell Hill from the A1 to the A47 and the A1 north and south including most of the lay-by and some of the treats left in the woods behind the lay-by. We didn't do the path to the bluebell woods so if anyone fancies a walk round the block to pick litter, it would be great. I can offer equipment if needed.

I am also considering storing the equipment at the church so there is easy access to anyone who might want to use it. I have some out on loan to my regular team but if you like this idea and might make use of it, please let me know. Please see Facebook for the next dates.

Nikki@4stonecottage.co.uk



**Contact us today to discuss your requirements!**

**Mobile:** 07846 428600 / **Office:** 01733 590501

**Email:** [james@willowservices.co.uk](mailto:james@willowservices.co.uk)

[www.willowservices.co.uk](http://www.willowservices.co.uk)



### Plumbing & Heating

- Boiler Replacement
- Boiler Repairs
- Cylinder Changes
- Heating Systems
- General Plumbing
- Heating Controls

### Bathrooms

- Bathroom Installation
- Baths / Basins
- Toilets
- Wetrooms

# Home Care & Support

Living independently at home is something most of us would like to do for as long as possible. However, there are times when we all need a little support with daily living tasks such as personal care and this is where Care Reserve can help.

## What are the benefits of Care Reserve home care?

- Help for everyday tasks, social activities or personal care
- You are at the centre of your own care and support at all times
- 24/7 support from a dedicated and highly trained team
- Support from local people, who know your area.

[admin@carereserve.co.uk](mailto:admin@carereserve.co.uk)

Workspace House Peterborough,  
28 - 29 Maxwell Road  
Peterborough PE2 7JE

Tel: 01733 396164; MB 07546251724

Our latest CQC rating:

 <b>Care Quality Commission</b>  <b>Overall Good</b>	<b>Safe</b>	Good
	<b>Effective</b>	Good
	<b>Caring</b>	Good
	<b>Responsive</b>	Good
	<b>Well-led</b>	Good

Our Clients



Inspected and rated

Good



**Care Quality Commission**



**Milton Keynes City Council**

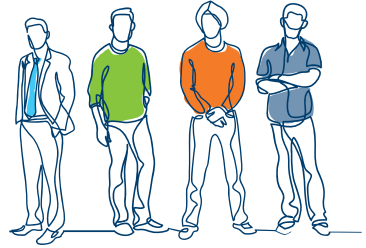


**Care Reserve**  
Bridging the gap

## An Open Day for those interested in Freemasonry

After two very successful events in as many years, Peterborough Masonic Centre in Ellindon will open its doors once more on **Saturday 7th September**, so that the general public can discover a little more about Freemasonry. The Open Day Event will run from 11am to 4pm.

With a membership of more than 200,000 people drawn from communities across the UK, Freemasonry brings people together irrespective of their race, religion or any other perceived differences that can divide us as a society. Being one of the oldest social organisations in the world, Freemasonry is not defined by an ideology – it is open to people from all religions and political persuasions, and provides the common foundation for friendships between members, many of which will last for life. Rather than working on buildings like the masons of old, today's Freemasons focus on building themselves as people of integrity.



Freemasons use four important guiding principles to help define their path through life: integrity, friendship, respect and service. Kindness and charitable giving are deeply ingrained within their principles. It provides a support structure that helps members make positive contributions to communities and worthwhile causes through fundraising events or volunteer work. For example, local Freemasons have been heavily involved with Three Pillars Feeding The Homeless Trust as well as Deaf Blind UK, Nene Valley Care Trust and Peterborough Cathedral.

Local Head of Freemasons, Mark Constant, said last year "It is always a great pleasure to open our doors to the public and explain a little more about Freemasonry and to have the opportunity to explain our key messages. The Open Day enabled people to find out more about our work and social activities, with displays from our local museum curator showing our 300 years of history, to our work today including recent fundraising, and showing people inside our Lodge rooms."

If you would like to discover a little more about Freemasonry then please come along to the event to take a look, e-mail [pmo@northants-huntsmaons.org.uk](mailto:pmo@northants-huntsmaons.org.uk) or visit [www.northants-huntsmaons.org.uk](http://www.northants-huntsmaons.org.uk)

Peterborough Masonic Hall

# OPEN DAY

**7th September 2024**  
**11am - 4pm**

**127 Ellindon, Peterborough PE3 8RD**

Discover Freemasonry  
In Peterborough





**GRAND VIEW**  
CARE HOME

inspected and rated  
**Good**  
Care Quality Commission

**PROFESSIONAL CARE  
YOU CAN TRUST**

*A home like no other*

**We Offer:**

- Luxury setting + Fabulous Views
- Outstanding Care
- Excellent Food / Own Chef
- Cinema, Gym and Hairdressing Salon
- Nurses on duty 24 hrs a day
- Private Dining Facilities
- Beautiful Café and Bar
- All Inclusive Fees, No Hidden Extras

**Residential | Dementia | Nursing & Respite Care**

**Call us now**  
**01780 432610 / 07551 945608**

Grand View Care Home  
Uffington Road Stamford Lincolnshire PE9 2EX

grandviewcarehome  
grandviewcarehomeuk  
laura.mills@alysiacaring.co.uk  
www.grandviewcarehome.co.uk



**yes you can**  
with **Slimming World**

*Come along and say hello  
at our Wittering Group*

**Wittering Parish Hall  
Townsend Road  
PE8 7TG**

*Every Wednesday at  
5pm or 6.30pm*

**Contact:**  
**Debra 07880567310**

**slimmingworld.co.uk**

**Slimming World**  
touching hearts, changing lives



**Just ask**

Making the right decisions can be stressful at the best of times, but we are here to help. Whatever's on your mind, just ask.

**TOBIAS COLTON** BA(Hons) DipPFS  
Principal  
**TOBIAS COLTON WEALTH MANAGEMENT**  
Associate Partner Practice of St. James's Place Wealth Management  
07468 428 380  
tobias.colton@sjpp.co.uk  
www.tobiascoltonwealthmanagement.co.uk

**ST. JAMES'S PLACE**  
WEALTH MANAGEMENT

The Partner Practice is an Appointed Representative of and represents only St. James's Place Wealth Management plc (which is authorised and regulated by the Financial Conduct Authority) for the purpose of advising solely on the group's wealth management products and services, more details of which are set out on the group's website www.sjp.co.uk/products. The 'St. James's Place Partnership' and the titles 'Partner' and 'Partner Practice' are marketing terms used to describe St. James's Place representatives.

SLP12026 V1 (04/20)

Wansford in England CC Fixtures 2024



Date	Opponents	Venue	Result/ Time
Sunday 1/09/24	Tbc	Away	1pm
Sunday 8/09/24	Ashpat	Home	1pm
Sunday 15/09/24	Hampton	Away	1pm
Sunday 22/09/24	Camra	Home	1pm
Sunday 29/9/24	Burghley park	Home	1pm

NEWS FROM WANSFORD AND KINGS CLIFFE PRACTICE



We welcome our new partner, Dr James De Souza. Dr De Souza joins our team on 2 September 2024.

“I grew up in Bedfordshire, moving to London to study medicine and graduated from King’s College, London before settling in Peterborough in 2017. I worked primarily in Peterborough Hospital through a number of inpatient specialities before entering and completing my GP training. While working in Peterborough I met my wife and we married in Wansford in 2023 and this year have been delighted to welcome our first child. I have a passion for high quality patient care and a clinical interest in palliative care having also worked at the inpatient unit in Thorpe Hall Hospice. I am eagerly anticipating joining the practice in September look forward to building a strong, collaborative relationship with the Wansford community and the surrounding areas”



FUTURE OF THE CHRISTIE HALL

We need your help to sustain the future of the Christie Hall. Our committee has shrunk in size over the years and we urgently need a Secretary to complete the officers required to form a committee and to go ahead with the next meeting due in October. If we cannot find anyone suitable then it could jeopardise the future of the hall.

The hall is currently used frequently to support local people who attend fitness classes including pilates and yoga, dance classes, health awareness groups and general hall hire for private parties, craft workshops, committee meetings and talks.

It would be a great shame to lose this facility. Please consider joining our committee or more importantly, acting as secretary. It is not a role that takes up too much time, with only 2 regular meetings per year.

Please contact Lisa Chambers at [lisa.chambers138@gmail.com](mailto:lisa.chambers138@gmail.com)  
Many thanks for your consideration.



**Call Glen anytime on 07771 784643**

## **Boat Hire on The River Nene**

Day/Weekend/Long term hire

Gilly fishing trips (full kit available)



## **Local Fabrication and Site Welding**

Repairs or New Builds

Gates/Fences/Farm Machinery

Any job never too small



## **Local Log Delivery**



All logs cut to order

Mobile logging service

Mobile log splitting service

Dead tree felling service

# Wansford Horticultural & Craft Society

## Summer pruning to encourage a bountiful harvest of apples

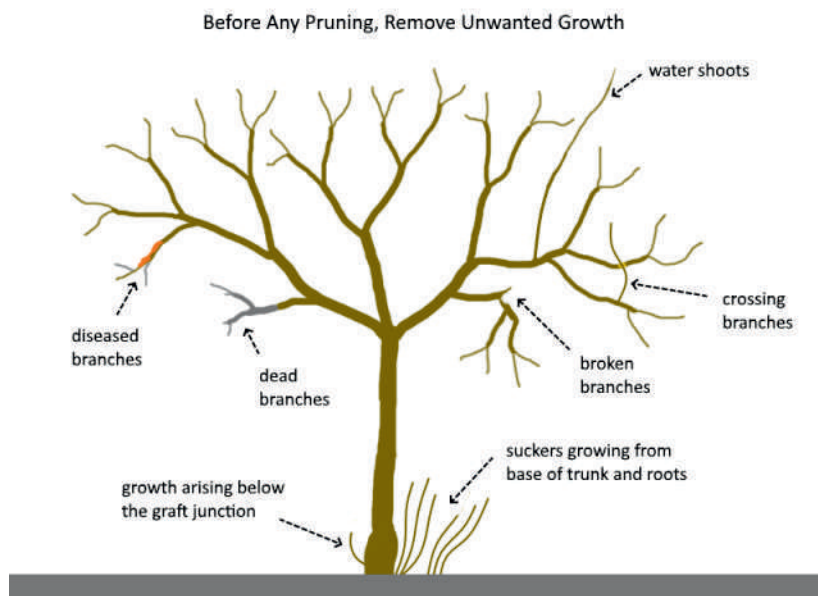
A job for a cool late summer evening. Summer pruning apples allows sunlight to ripen the fruit and encourage a bountiful harvest of apples the following year. This is the main method of pruning for restricted forms such as cordons, espaliers, fans and pyramids. I also do this for our very old apple tree with success.

By pruning in summer, we encourage our trees produce more fruit and less wood, as is sometimes the case with winter pruning.

### When & How to prune

Generally, this will be from mid-August to mid-September. I prefer the latter to reduce the possibility of further new growth.

First, Remove any unwanted branches.

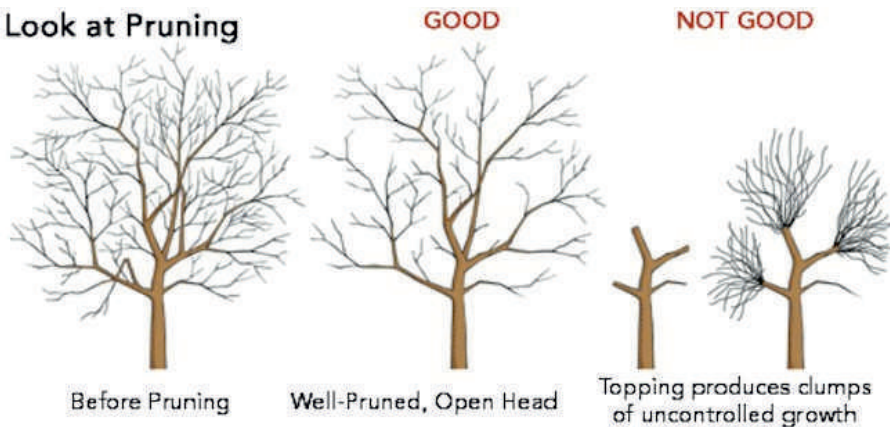


Now the summer pruning can start. Cut back new shoots 20cm (8in) long growing from the main stem by half. Also, cut back new shoots growing from existing sideshoots (sub-laterals) to one-third. Do not prune new shoots that are less than 20cm (8in) long as they usually terminate in fruit buds. This can get quite technical, and I normally look at RHS website for



guidance and strive for an open goblet structure on our tree. The picture below gives a good guide.

## A Look at Pruning



If you belong to a gardening club you will already know that there are two extremes of pruners in the garden. Those that attack everything in sight as if on a mission and give their trees a short back and sides at every opportunity, and there are those timid pruners who will only nibble at an occasional branch because they are frightened of making an incorrect cut. Both methods are equally wrong. In my 1<sup>st</sup> year I made the 'not good' mistake, which has taken 3 years to correct back to the middle and a nice open goblet structure.

The rewards of efficient pruning in summer are beyond belief and you can see from our garden (before pruning this year) and Rhona will be processing apples for quite sometime !! Sorry !!

Hope you enjoying your garden and take special care if your tree requires a ladder.

Gary

Wansford Horticultural & Craft Society

[garypunter@aol.com](mailto:garypunter@aol.com)



# DIRECTORY OF CONTACTS

**For all enquiries, contributions and adverts**

<b>Craig Bunday</b>	craig@ascotgraphics.co.uk	07771 538661
<b>Ascot accounts</b>	accounts@ascotgraphics.co.uk	01487 801301

## Parish Councils

Sutton	Deirdre McCumiskey (Clerk)	01780 782668
Wansford	clerk@wansford-pc.gov.uk	
Sibson-cum-Stibbington	Margery Beuttell (Clerk@stibbington.org.uk)	
Thornhaugh	Deirdre McCumiskey (Clerk)	01780 782668
Water Newton (Parish Meeting)	Caroline Nathan (Chairman)	07989 362514

**City Councillor ( Wittering Ward) - Gavin Elsey** **07738930599**

## Churches

<b>Ministers:</b> Thornhaugh & Wansford	01780 782271
Stibbington, Sutton, Castor & Water Newton	01733 380900
<a href="mailto:admin.castor@btconnect.com">admin.castor@btconnect.com</a>	

### Churchwardens:

St Andrew’s Thornhaugh:	Stuart Foreman	01780 783220
	Liz Kemp	01780 782333
St Mary’s Wansford:	Caroline Ashley	01780 782408
	Alan Jones	01780 783205
St John the Baptist, Stibbington	Charlotte Bradshaw	01780 781805

### Friends:

St Mary’s & St Andrew’s	Caroline Ashley	01780 782408
St Remigius Water Newton	Jack Ward	01733 394646

## Other useful contacts

Neighbourhood Policing	101	P’boro City Council	01733 747474
Wansford Surgery	01780 782342	Royal British Legion	01780 782200
(Out of hours	111 option 4)	Stibbington & Wansford WI .	.781733
Wansford Pharmacy	01780 781616	Cricket Club	07860 278800
Communicare	01780 470437	Horticultural Society	01780 592514
H’don District Council	01480 388388	Stibbington Centre	01780 782386

**Website** **[www.livingvillagesmagazine.co.uk](http://www.livingvillagesmagazine.co.uk)**

©2024 Living Villages Magazine The contents of this magazine may not be copied, reproduced, distributed, republished, downloaded, displayed, posted or transmitted in any form or by any means without the prior written permission of Living Villages Magazine. You may not distribute, display or copy any of the contents of the pages contained in this magazine to third parties without the prior written permission of Living Villages Magazine. All images shown in this magazine are the property of Living Villages Magazine unless otherwise accredited to another. Images may not be used without the prior written permission of Living Villages Magazine or the accredited owner. Unless otherwise specified, the authors of the literary and artistic works in the pages in this magazine have asserted their moral right pursuant to Section 77 of the Copyright Designs and Patents Act 1988 to be identified as the author of those works. If permission is sort and given, it is expected that all articles/images be accredited to either Living Villages Magazine or the author of said articles/images. The views expressed in articles published are strictly those of the writer, and not of Living Villages. Living Villages cannot vouch for products and services advertised, nor accept any liability resulting from the purchasing of products or services, although care is taken to ensure their suitability.

# Book your next holiday with Kirstie

## Here's why...

- She has a wealth of travel experience
- She offers world wide cover, guided tours, cruises and rail journeys
- She can tailor make your ideal package or multicentre itinerary
- She can sell packaged holidays such as Jet2, Kuoni and Easyjet
- She's with you 24/7 for customer support - even when you're on holiday!
- She offers 100% financial protection
- She is professional, friendly and caring

## MULTICENTRE • CRUISES • GUIDED TOURS

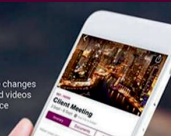
Why wait? Call **01767 360014** or **07815 814798**  
or email [kirstie.timmins@travelcounsellors.com](mailto:kirstie.timmins@travelcounsellors.com)

 **kirstietimmins**

**myTC**

YOUR ONLINE ACCOUNT  
WITH TRAVEL COUNSELLORS

- Simple to use
- Available via Website and App
- Flight Alerts, inc. cancellations and gate changes
- Detailed hotel information inc. maps and videos
- All your travel documentation in one place



**travel  
counsellors**

# NORTON RICKETT

Local *Independent* Estate Agents

- Free Market Appraisals
- Probate Valuations (*RICS Surveyor*)
- Local – Office near Wansford
- Established & Trusted since 2012
- Advertising on Rightmove
- Office Presence in London

# NIR

NORTON  RICKETT

TOWN | COUNTRY | EQUESTRIAN

[www.nortonrickett.co.uk](http://www.nortonrickett.co.uk)

**01780 782 999**



# Crown

## Property Services

- 👑 Electrical & Plumbing
- 👑 Kitchens & Bathrooms
- 👑 Renovations
- 👑 Extensions
- 👑 Windows & Doors
- 👑 Groundworks
- 👑 Landscaping
- 👑 Internal Refurbishment

Old Sulehay Cottages, Sulehay Road, Wansford. PE8 6PA

**07766 168659**

jonathon@hibbins.me

# Village Pizzas

Open Tue – Sat for  
Collection / Eat-In at  
Leedsgate Farm  
4.30pm – 10pm

Or

Delivery 6pm till 10pm

**01780**

**784587**

View our Menu at  
[www.villagepizzas.co.uk](http://www.villagepizzas.co.uk)



# Justine

BROMAGE FITNESS

Mat based Pilates and Chairobics

Classes for all levels

## MAT BASED PILATES

1 hr classes

Online on Zoom, or in person at  
Christie Village Hall (Wansford) and Harringworth Village Hall

Monday, Tuesday, Wednesday and Thursday  
£4 online / £6 in person



Justine Bromage  
Fully Qualified Level 3  
Pilates Instructor  
Level 3 Personal Trainer  
RSA To Music Instructor

Ease back pain  
Strengthen your core, abs and back  
Improve sports performance  
Exercise without joint pain  
Increase your flexibility  
Boost brain power and focus

Christie Village Hall:  
16.45 and 18.00 Monday  
12.30 Wednesday

Online:

All the above times streamed  
plus 11.00 and 12.30 Tuesday  
11.30 Thursday

**justwhim@hotmail.com**

**07919 106156**



**Greenwood  
homecare**

## Award-winning home care in Peterborough

- ✓ Personal Care
- ✓ Companionship
- ✓ Complex Care
- ✓ Medication Support
- ✓ Live-In Care



**01733 808531**

[peterborough@greenwoodhomecare.co.uk](mailto:peterborough@greenwoodhomecare.co.uk)  
[www.greenwoodhomecare.co.uk](http://www.greenwoodhomecare.co.uk)