

# *Living Villages*

Image taken by John Measures



*September 2023*

*Water Newton Thornhaugh  
Stibbington Sutton Wansford*

## Tough decisions for UK investors

Forcing people to pay more tax on their hard-earned savings is not a popular policy for governments but it is something that UK investors face in the upcoming financial year after chancellor Jeremy Hunt confirmed a reduction to the capital gains allowance from April.

For investors, the most obvious effect on their savings is that any investment held outside an ISA or pension will be subject to capital gains tax.

• **These tax hikes mean that owning assets outside of tax effective wrappers is getting more expensive. One option available to investors is the often overlooked 'Bed and ISA', which is when any savings held in a general investment account are transferred over to an ISA.**

If you're planning to gift assets to someone else, then it could be worth making use of your annual CGT allowance this year before it's reduced. Many people don't realise that you also owe capital gains tax on assets gifted to someone else.

• The gain is based on the market value at the time of the gift but tax planning decisions are complicated and it's important not to let the tax tail wag the financial planning dog."

**Simon Every AwPETR Adv DipFA Chartered ALIBF - Hill Grafford**

*Is it time to consider how your assets are invested?*

### Our Aim at Hill Grafford

To be there as an expert who knows you and your family personally to the extent that we can customise a financial plan that exactly fits your personal requirements.

We provide Holistic Advice on

- Long term care investment solutions
- Pension & investments
- Offshore and onshore tax planning
- Inheritance tax solutions
- Setting up of Trusts based investment solutions

## We're here to help.

We were rated a Top Rated Financial Adviser for 2020 and 2021 - as distributed in The Times

Speak to one of our Local Chartered Financial Advisers today on

**01780 784310 or 07967 015 805**

**[www.hillgrafford.co.uk](http://www.hillgrafford.co.uk)**

A copy of client reviews can be emailed upon request.



## Editorial

Dear readers

As the curtain comes down on this year's Wansford Show, The Horticultural and Craft Society would like to thank all those who made it a success (page 21), and full report will be included next month. Bringing everything back down to earth - a mysterious rapper makes their debut in the pages of this month's edition, see their thoughts on 'Doggy Doo' (not Scooby Doo!) on page 13.

There are a couple of local talent competitions coming up in September - overleaf we promote **Wansford's 'Let Us Entertain You'**, and on page 23, **Nassington Church** host their own **'There's No Business Like Showbusiness'**.

In the centre pages we also bring news of **The Sealed Knot** event **'Elizabeth Cromwell Remembered'**, which will take place in Northborough over the weekend of 25th September, full details included. It looks like September will be a packed month!

Best wishes

Craig

### Contents

6	Worship & Benefices
10	Stibbington and Wansford W.I.
17	Parish Council Notices and Minutes
21	Wansford Horticultural & Craft Society
25	Wansford Cricket Fixtures
26	Contacts

### Woodland Timber Products

Fencing, Play Houses, Gates  
Pet Housing, Sheds



01780  
783983



Unit 4, Leedsgate Farm Business Park.  
Kings Cliffe Road. Wansford PE8 6NX.  
07748 787360  
[woodlandtimber.products@yahoo.com](mailto:woodlandtimber.products@yahoo.com)



## Georgina's

Curtains & Keepsakes

Covering all the Villages  
Stamford to Stibbington  
(and everywhere inbetween!)







Bespoke handmade curtains, roman blinds and soft furnishings to complement your home.  
For a free consultation and quote call 07957 686595  
[www.georginascurtainsandkeepsakes.com](http://www.georginascurtainsandkeepsakes.com)

Back by popular  
demand

## LET US ENTERTAIN YOU!

A fun evening of Comedy, Magic and Musical  
entertainment provided for the whole community



Friday the 15<sup>th</sup> September @ 7.30 pm

St. Mary's Church Wansford

Licensed bar from 7 pm

Admission is free with all welcome

Donations for upkeep of Church Building would be  
appreciated

## Castor Lodge Care Home

Our family, caring for yours

At Castor Lodge, our care is the kind we would want all of our loved ones to receive. Offering residential and dementia care, our dedicated team make life comfortable and enjoyable for all our residents, allowing them to live safely and as they choose. Our brand new home is luxurious and beautifully furnished, whilst retaining a warm family atmosphere that makes Castor Lodge feel extra special.

- 68 Spacious en-suite bedrooms
- 6 Premium self-contained suites
- Bistro Café and themed pub
- Sociable lounge and dining areas

To find out more about life at Castor Lodge contact our Customer Relations Manager Laura Mills on 07725 799 217 or email [laura.mills@countrycourtcare.com](mailto:laura.mills@countrycourtcare.com)

 01733 823 163

 Splash Lane, Castor, Peterborough, PE5 7BD

 [www.countrycourtcare.com](http://www.countrycourtcare.com)

 Country  
Court  
Our family, caring for yours



# NEED A RECOMMENDATION?

The **ONLY** Police Checked  
recommended register of  
local approved traders



**safe**localtrades.com<sup>®</sup>

Recommended & Approved



Much more than just a recommendation ...

## Serving the PE Postcode community since 2008

Over 70 different trade categories and over 17,500 reviews

Here are some of our members ...

New Garage Doors & Repairs



**GARAGE DOOR &  
SHUTTER SERVICES**

[www.garagedoorandshutterservices.co.uk](http://www.garagedoorandshutterservices.co.uk)

Call Dave on

**07709 337647**

Electrician

**OLD COURT  
ELECTRICAL**

[www.oldcourtelectrical.co.uk](http://www.oldcourtelectrical.co.uk)

Call David on

**07973 507420**

Loft Insulation & Boarding,  
Cavity Wall Insulation



[www.atoz-energy.co.uk](http://www.atoz-energy.co.uk)

Call Leanne on

**07878 314562**

Building & Carpentry Services



**Steve Deprez & Son**

Building • Brickwork • Carpentry

Preserving the past. Building the future.

[stevedeprezbuilders@gmail.com](mailto:stevedeprezbuilders@gmail.com)

Call Steve on

**07414 292188**

Driveways, Patios &  
Hard Landscaping

**STYLE  
HOME IMPROVEMENTS LTD**

[www.styleimprovements.com](http://www.styleimprovements.com)

Call Tony on

**07879 881315**

Gutter Cleaning & Repairs



[www.guttercleancompany.com](http://www.guttercleancompany.com)

Call Jeremy on

**0800 179 9363**

To see our full list of members and read all reviews just go to ...



[www.safelocaltrades.com](http://www.safelocaltrades.com)



**0800 014 1832**



The safest way to source local traders

Tear out page and keep

# WORSHIP DATES

Every Sunday 5.00pm - Zoom 'At Home' Service. Log in and phone details from Rev. Jane [jdailby@aol.com](mailto:jdailby@aol.com) 01780 782271

## St. Leonard's, Apethorpe

3 <sup>rd</sup>	11.00 a.m.	Holy Communion
17 <sup>th</sup>	11.00 a.m.	Holy Communion

## St. Mary's and All Saints, Nassington

Every Thursday 9.30 a.m. Holy Communion BCP		
3 <sup>rd</sup>	8.15 a.m.	Holy Communion BCP
3 <sup>rd</sup>	9.30 a.m.	Holy Communion
10 <sup>th</sup>	9.30 a.m.	Holy Communion
17 <sup>th</sup>	9.30 a.m.	Harvest Festival
24 <sup>th</sup>	9.30 a.m.	Family Service and Crafts

## St. Andrew's, Thornhaugh

3 <sup>rd</sup>	9.30 a.m.	Holy Communion
17 <sup>th</sup>	9.30 a.m.	Morning Prayer and Harvest Prayers

## St. Mary's, Wansford

Every Wednesday 10.00 a.m. Morning Prayer		
10 <sup>th</sup>	3.30 p.m.	Family Harvest Festival and Crafts
24 <sup>th</sup>	9.30 a.m.	Holy Communion

## St. Mary's, Woodnewton

3 <sup>rd</sup>	9.30 a.m.	Holy Communion
17 <sup>th</sup>	9.30 a.m.	Holy Communion
24 <sup>th</sup>	8.30 a.m.	Holy Communion BCP

## St. Mary Magdalene's, Yarwell

10 <sup>th</sup>	11.00 a.m.	Holy Communion
17 <sup>th</sup>	3.00 p.m.	Methodist Service
24 <sup>th</sup>	11.00 a.m.	Holy Communion

## CASTOR BENEFICE

We are still maintaining the following service pattern every Sunday in each of our **Parish churches** until further notice.  
**Marholm** 9.00am - Holy Communion (Morning Prayer on 4th Sunday)  
**Castor** 8.00am Holy Communion (said service) 10.15am - Sung Eucharist  
**Sutton** 9.00am on 4th Sunday of the month - Holy Communion  
 Every **Wednesday** morning at **10am** there is a service of Holy Communion at **Castor**.

We still continue to celebrate **Evensong via Zoom at 6pm every Sunday**, if you wish to join us please contact the Benefice office for the Zoom link and access code.  
[admin.castor@btconnect.com](mailto:admin.castor@btconnect.com)

Advance Notice - The next service at St. John the Baptist, Stibbington will be to celebrate **Harvest Thanksgiving on Sunday the 8th of October at 4pm**, see separate poster.

**David Ridgeway**

## ST. JOHN THE BAPTIST STIBBINGTON

HARVEST THANKSGIVING

**SUNDAY 8th OCTOBER, 4.00 pm**



**REFRESHMENTS WILL BE SERVED  
AFTER THE SERVICE**

**Do come and join us, you will be  
assured of a very warm welcome**

Last month I wrote about those involved in the media, the arts and in sport, suggesting that we should think about, and indeed pray for, those who influence and enrich our lives in these areas; that they may use their status in positive ways.

As I was thinking about what brings enjoyment and refreshment to my life, I was reminded of Jesus' words: "I have come that you might have life in all its fullness." I wonder what "life in all its fullness" means to you? Certainly a rich and engaging environment and places of refreshment and renewal would seem to be part of that, and we hopefully we can all seek out what we need for "life in all its fullness". For me that involves seeing what is good around us, and what is good for me, as God's gift; his intention is our well-being and wholeness.

In our church we continue to look for ways of sharing God's goodness with our community and encouraging an understanding of our wonderful surroundings as God's gift to us; to be used responsibly and to be enjoyed that our lives may be enriched. We are trying out a new family service at Wansford on the afternoon of 10th September to celebrate Harvest. There will be a short service and harvest themed crafts for everyone to join in with. There will also be Harvest Prayers at Thornhaugh the following week. In addition we also have another of our wonderful entertainment evenings on 15th of the month. We hope that both of these will be enriching and life-enhancing in their different ways – do come and join us!

In September our focus often turns to our children and young people as they begin a new year of education. We might consider what they need to live life "in all its fullness", what are the positive influences they need to flourish. We might consider how we can support and encourage families, schools and youth work as we all seek the well-being of our youngsters at this important time. In the church we will be praying for them, and for all our community that we might know what it truly is to live life in all its fullness.

With every blessing  
Rev. Jane

## REFLECTIONS



*Harvest Festival - Wansford Church*

*10<sup>th</sup> September*

**3.30 p.m. (note the time!)**

*Come and join us for a different sort of Harvest Festival with a short family service and harvest crafts and activities, along with refreshments.*

***ALL WELCOME!***





**Podiatry & Chiropody**  
 Cracked Heels, Corns, Diabetic Foot Care,  
 Calluses, Hard Skin, Verrucae Treatments;  
 Biomechanics & Orthotics  
 Nail Surgery, Ingrown Nails,  
 Cryo Aesthetics for Skin Lesions,  
 Wilde Pedique Nail Reconstruction

**01780 782200** Home Visits Available  
 Sue Arnold BSc(Hons) MRCPod & Associates  
 19 Elton Road, Wansford, PE8 6JD  
 wansfordinstep@gmail.com

Now Accepting New Patients!

**Ear Wax Microsuction**  
 Ear Ache? Hearing Loss? Blocked Ears?  
 Need A Pre Hearing Test Clean?  
*It could just be wax!*




Dry carpet cleaning and upholstery cleaning services in Peterborough and the surrounding areas.

Whether you have an individual chair or carpet in a domestic property, or are interested in contract carpet cleaning in your business, you can benefit from our 35 years experience.

Telephone: **01832 280429**  
 Mobile: **07951 124374**  
 Email: [info@bcnmulticlean.co.uk](mailto:info@bcnmulticlean.co.uk)

**GRIFFIN**

**Solid Fuel Merchant  
 Supplier of Pre Packs**

Coal Bunkers Charcoal Compost  
 Flo Gas Logs & Sticks Salt

<b>Coal Yard</b>	<b>Office</b>
Station Road	12 Church Hill
Nassington	Castor
01780 782540	01733 380470

**BARKLEYS GARDEN SERVICES**  
 Your LOCAL Gardening Team

Regular garden maintenance  
 Lawn care and mowing  
 Hedge trimming

Lady gardener available  
 Get in touch by calling  
 Bev - 07593 721144  
 Peter - 07747 502471  
[beverleybarkley1@gmail.com](mailto:beverleybarkley1@gmail.com)



## The Friends of St Mary's and St Andrew's

There will be a Coffee Stop on **20th September in St Mary's Church from 10.30am** after Morning Prayer. All welcome for coffee, cake and company.

**Caroline Ashley**



### THE ARTS SOCIETY PETERBOROUGH

The Arts Society is a leading arts education organisation that brings people together through a shared curiosity for the arts. Each year The Arts Society Peterborough (TASP) holds nine illustrated talks given by experts in their field on subjects ranging widely, including old Masters, modern sculpture, silver jewellery, the work of David Hockney and music in art. The talks are held at

The Fleet in Fletton Peterborough on the second Thursday of each month except June, July and August. The talks start at 10.45 am but you are welcome to come earlier and meet like-minded people for a chat over a cup of coffee. Non-members are always welcome and the first talk is free, so come and join us!

In addition to the live talks, annual members also receive other benefits. If you wish to find out more about our Society or about becoming a member, please visit our website, [www.the-arts-society-peterborough.org.uk](http://www.the-arts-society-peterborough.org.uk) Our next two talks are:.

#### 14 SEPTEMBER 2023

**“The greatest art patron in the world” Rudolf II and his Kunstkammer with Dr Albert Godetz”**

After a brief introduction to the concept and practice of the Kunstkammer, this lecture will explore the nature of the Holy Roman Emperor Rudolf II's collection.

#### 12 OCTOBER 2023

**1968, the year that changed the direction of art by Anna Moszynska**

What happened in '68? A series of major events shook the world and artists responded to the changing times by making work that challenged the traditional assumptions of art.

## WANSFORD COMMUNITY HALL

Peterborough Road, Wansford

This hall accommodates parties of up to 36 people seated. Ideal for Meetings, Workshops, Aerobics etc

GREAT VALUE AT ONLY £4 per hour  
FOR BOOKINGS TELEPHONE  
John Stannage 07879 485330

Capitol Lettours



Your local property agent

With over 30 years of  
experience

Relocation, Lettings and Sales

Please call our office for a  
competitive quote

Peterborough - 01733 553366

([enquiries@capitollettours.com](mailto:enquiries@capitollettours.com))

[www.capitollettours.com](http://www.capitollettours.com)

## STIBBINGTON & WANSFORD WI

Today's women working for tomorrow's world



Stibbington & Wansford's WI group visited Boughton House on 8 August 2023, one of the great houses so easily accessible in this area. Originally a Tudor manor, the 1st Duke of Montagu (Ralph) was determined to build a grand house after his visit to Versailles as King Charles II's envoy to the court of Louis XIV. Boughton House subsequently went through a period of expansion between the years 1685 to 1695 with the creation of its twin pavilions, State Rooms, grand staircase, landscaping of its grounds and, with land extending to 11,000 acres, it earned the name of 'The English Versailles'. Following the death of George, the 3rd Duke of Montagu in 1790, the house passed, through the marriage of his daughter, Elizabeth, to Henry Scott, the 3rd Duke of Buccleuch (also the 5th Duke of Queensberry) and remains within the Buccleuch family to this day.

Our conducted tour included the Great Hall and main reception rooms of the ground floor, the stables (where a magnificent 1830s dress coach is stored), and landscaped grounds at the far side of which we found a walled kitchen garden. Boughton House has an abundance of portraits of its former inhabitants and nobility by El Greco, van Dyke and Gainsborough, and also many wall tapestries made by the Mortlake factory in 17th century London where Flemish workers taught Londoners the art of stitching tapestries. We walked through the Rainbow room, named by children living in the house just because they witnessed this from its window; the Egyptian Room which housed Egyptian mummies from the British Museum during WWII and where the 2nd Duke held meetings of the Egyptian Society; and the Audit room where local farmers paid their rent and played shovelboard games on the very long table there. In the same room were glass cabinets displaying pieces of Sevres porcelain and a dinner service with a cobalt blue decoration.

Whilst walking along corridors of the ground floor we overlooked a courtyard



garden created some years ago for the silver wedding anniversary of the current Duke's late parents which had a very pretty display of white and silver flora with white hydrangeas, roses, senecio cineraria, and stachys byzantina (lamb's ears). In the centre of the garden was an immaculate green lawn.

After consuming a very welcome cup of tea and cake in their tearshop, a small group of us then walked through the peripheral gardens of the house and grounds

and discovered the walled kitchen garden which had separate vegetable and soft fruit sections, with an adjacent orchard and pear trees growing next to its high walls. It was interesting to see the use of calendula flowers growing alongside many vegetables to deter aphids and whiteflies from attacking these. More information on the house can be found on its website [www.boughtonhouse.co.uk](http://www.boughtonhouse.co.uk).

When approaching the Boughton estate from the east we all had the added treat of driving through the pretty village of Geddington and were able to see the 13th century Queen Eleanor Cross, one of 12 monuments (of which only 3 survive) built on the instruction of King Edward 1 after his queen's death in Harby (near Belvoir Castle) in 1290. We had a memorable and enjoyable day out!

The next monthly meeting of the Stibbington & Wansford WI will be held on **Tuesday, 12 September 2023** when Gary Punter will present on his work 'From Sugar to Chanel' at **7pm in St Mary's Church, Wansford**.

Marie Lewis  
Stibbington & Wansford WI

**LOCAL WINDOW CLEANER IN YOUR AREA**

**P.G.K**

**WINDOW CLEANING**

**Insured & Experienced Water fed pole system**

**Call for a free estimate**

**Tel 07368 671492 [pgkwindowcleaning@gmail.com](mailto:pgkwindowcleaning@gmail.com)**

# OVER 50 YEARS EXPERIENCE

Car buying as it should be; simplistic, with no admin fees, no pressure and a wealth of knowledge to help you find your dream car.

**Great part exchange prices given**

**Finance from as low as 6.9%**

**[www.heartysofpeterborough.co.uk](http://www.heartysofpeterborough.co.uk)**

**01733 560605**

**[sales@heartysofpeterborough.co.uk](mailto:sales@heartysofpeterborough.co.uk)**



**HEARTYS**  
*of Peterborough*

**THE CHRISTIE HALL**  
 Elton Road, Wansford  
 (registered charity no 1033998)

---

A well-equipped hall  
 with large kitchen and parking.  
**Available for parties, receptions,  
 meetings, activity groups  
 and most types of private functions**  
 For more information and details on how to book  
 visit our website  
**www.christiehall.co.uk**

**PAWS AND CLAWS**  
 ★ ★ ★ ★ ★  
**Boarding Cattery**

*"Cats have a 'tail' to tell when they've 'paws'd'  
 awhile at Wansford's 5 Star Purr Palace"*

**Tel 01780 782174**  
**e-mail**  
[pawsandclaws@hotmail.com](mailto:pawsandclaws@hotmail.com)



Working with Peterborough Cat Rescue to rehome cats  
 and kittens seeking loving homes and laps on which to purr

Peterborough City Council & Rutland County Council  
 Licence Number: 078015

**MOBILE HAIRDRESSING**

Ladies & gents hairdresser with over 30 years experience. 

If you are housebound, have reduced mobility, no transport or simply prefer the convenience of having your hair done at home, I have daytime appointments available. Fully insured. Competitive prices.

**Please call Tracey on 01780 782467**

**The Wansford Rap (For a Doggy Doo Free Zone)**



Gonna be dogmatic, emphatic – even a tad autocratic,  
 Sympathetic, empathetic but wholly in your face atetic!  
 I'm not talking about Snoop Dogg – I'm talking 'bout my lurve of real dogs

(Maybe as much as my Tik Tok blogs)  
 But doggy doos on my shoes  
 Cramps my style which I can't lose.  
 On the pavement, on the road  
 I see doggy doos not squashed toad.  
 Give dogs respect and dignity  
 Treat them how you'd like to be.

And when a dogs gotta do what a dogs gotta do  
 Bag it up – bin it or take it home -  
 Say welcome to a doggy doo free-zone.  
 In the land of swans and Barnaby's dream  
 Give back to dogs their self-esteem.  
 Respect!

Anonymous (but doggone - you may recognise the canines above!)

# Elizabeth CROMWELL Remembered



by St Andrew's Church Northborough

## The Sealed Knot



Sat 23  
&  
Sun 24 Sept  
11am- 4pm



Living History, Military Displays  
Family Activities



Northborough Primary School,

Church Street, Northborough PE6 9BN

**Earlybird Ticket £8 from:**

[elizabethcromwellremembered.eventbrite.com](http://elizabethcromwellremembered.eventbrite.com)

Ticket on the gate £10 (Cash please)



Accompanied Under 12's Free

The 'Save our St Andrews' (SOS) fund-raising group have been campaigning for the last 2 years to raise funds to restore our 12th century church, St Andrew's in Northborough. Northborough has close connections with the Cromwell and Claypole families as well as the "Peasant Poet", John Clare and his wife and descendants. Our event in September 2023 will commemorate the life of Elizabeth Cromwell.

Elizabeth Cromwell, the wife of Oliver Cromwell, is buried in Northborough's church, St Andrew's, and the village has strong connections with the Cromwell and Claypole families. Cromwell's favourite daughter, Elizabeth, was married to Sir John Claypole of Northborough Manor. Elizabeth Cromwell lived with her son-in-law following Oliver Cromwell's death in September 1658 and died herself at Northborough Manor in November 1665.

The Sealed Knot and the Cromwell Museum in Huntingdon will hold a series of events, hosted by Northborough Primary School, Northborough Manor and St Andrew's Church to highlight the connection between Elizabeth Cromwell and Northborough.

The weekend of events will be undertaken as follows:

**Friday 22/9:** Sealed Knot and Cromwell Museum will do free "Show and Tell" for Northborough School (PE6 9BN).

Sealed Knot will use the Northborough School field and orchard for tents, caravans for the "soldiers" - 50-60 people to come from all over the country - for the weekend.

**Saturday 23/9:** 10.30 am - Salute (drums and colours) at Northborough Manor and march to St Andrew's Church  
11.00 am - Salute party to lay a wreath on Elizabeth Cromwell's resting place, St Andrew's Church.  
March to school field, 11.15 am - 4.00 pm - Living History and Military Displays, as well as Family Activities on the school field.

7pm - Stuart Orme, Curator of the Cromwell Museum in Huntingdon, will give a talk on "Mrs Cromwell's Cookbook: Food, Politics and the life of Elizabeth Cromwell" in St Andrew's Church.

**Tickets on the day - £15.00 - refreshments will be available**

**Sunday 24/9:** 11.00 am - 4.00 pm - Living History and Military Displays on the school field. Entry to the Living History and Military Displays on 23 and 24 September will be by ticket.

**Early bird tickets available at £8.00** per day at [elizabethcromwellremembered.eventbrite.com](http://elizabethcromwellremembered.eventbrite.com) under 12's free.

**Tickets available on the day at the gate - £10.00. Cash only.**

There will be a "Food Court" on the school playground selling food and refreshments (including a licensed bar) and Tea and Cakes will be on sale in St Andrew's church on the Saturday and Sunday afternoons.

Sealed Knot - <https://www.thesealedknot.org.uk/>

The Cromwell Museum Huntingdon - <https://www.cromwellmuseum.org/>





## Your trusted advisers

We provide individuals and businesses with a full range of accounting, audit, corporate and personal tax planning services.

- Audit and Accountancy
- Business Acquisitions and Disposals
- Business Plans and Projections
- Corporate and Personal Taxation
- Grant Funding
- MT Cloud Accounting
- Payroll, Bookkeeping and VAT
- Tax Planning and Mitigation

For more information,  
please contact us:

 **01733 560160**  
[moorethompson.co.uk](http://moorethompson.co.uk)

Peterborough | Spalding | Wisbech | Market Deeping



Moore Thompson is registered to carry on audit work in the UK by the Institute of Chartered Accountants in England and Wales.



## WANSFORD PARISH COUNCIL



### Wansford Bridge

As everyone will know, Wansford bridge has been closed to vehicle traffic since the 18th July. The problem is that the western side wall of the bridge started to bulge outwards close to the north end of the bridge and action had to be taken. The problem was first notified to Peterborough City Council by a resident and this shows how important it is to report such issues.

Repairing the bridge will not be a quick process. As with all old stone structures, you never really know what is there until you open it up and how the structure is repaired may well go through several iterations. The important thing is to complete a repair which lasts, does not damage other parts of the structure and retains the appearance and characteristics of the bridge. Wansford Parish Council is in regular communication with the PCC project manager and it is clear that the repairs are being done carefully and sympathetically. As the bridge is a listed structure, all work has to be approved by Historic England.

I have been puzzled as to why the bridge failed at this particular point but David Stuart-Mogg has found that there used to be a set of steps on the side of the bridge in the area of the failure. Removal of these steps may have left a discontinuity in the structure, focusing loads into a weaker bit of stonework.

It is impossible to give a precise timetable for this sort of work and features such as using lime mortar to set the stones will slow up the work. PCC knows how important the bridge is to the life of the village and will not waste time.

### Wansford Youth Council

The Youth Council met for the second time on the 16th August and 9 children enjoyed making bug hotels, filling bird feeders and potting up plants. Some of the results can be seen on the village green. **The next meeting is on the 26th September at the Community Hall.**

### Parish Councillor Vacancy

For a little while now, Wansford Parish Council has been operating with only 6 councillors instead of the normal 7. Cllr Taylor-Pitt joined us a few months ago and has already made a large contribution to the Council with such initiatives as the Youth Council. Being a Parish Councillor gives you the opportunity to improve the village in which we all live. The Council meets once a month but the amount of time you put in outside the meeting is entirely up to you. Some of us may remember President Kennedy's speech saying "Ask not what your country can do for you - ask what you can do for your country". If you are interested, contact the Clerk on [clerk@wansford-pc.gov.uk](mailto:clerk@wansford-pc.gov.uk).

### Meetings

Wansford Parish Council met on the 14th August with a full complement of Councillors, our City Councillor and two members of the public, A wide range of topics were discussed and the draft minutes can be seen on the Council website at <https://wansford-pc.gov.uk/document-category/minutes/> The next meeting will be at 7.30pm on Monday 11th September in the Community Hall.

Cllr Richard Clarke

## THORNHAUGH PARISH COUNCIL

A meeting of Thornhaugh Parish Council was held on 7th August 2023 in St Andrew's Church. It was chaired by Chris Smith and present were Yana Clipsham, Louise Molesworth, Camilla Plumb, Nicola Roger, Laura Fox-Clipsham and Steve Fox, Gavin Elsey (PCC Ward Councillor) and Deirdre McCumiskey (Clerk)

There were no apologies for absence.

Gavin Elsey confirmed that although he had left the Conservative Party and joined Peterborough First as an Independent, he will be the Ward Councillor for the Sutton, Thornhaugh, Wansford and Wittering villages until the Peterborough City Council Elections in 2024.

Laura Fox-Clipsham and Steve Fox answered a number of questions on Planning Application 23/00852 as they are the applicants.

There were no police representatives present and nothing formally recorded. The Chairman mentioned that the Book Exchange had not lost any further books and that a note had been left that although 10 books had been taken, 10 replacements had been provided.

Highways Issues - the Chairman said that the grass cutting has been completed as has the removal of the fly-tipping on the A47. She is still lobbying Highways England re removing the layby on the A1 North just before the Thornhaugh turning. Gavin Elsey said that this was a good time to put forward such a request as the Peterborough City Council Transport Officers had registered a bid for upgrading the A1 to be considered for the 2025-2030 programme of works. There will be a detailed process to follow.

Defibrillator Training - Louise Molesworth said that the Defibrillator Training Session that had taken place on 10th June 2023 had been very successful. As several interested participants were unable to attend on that day, another session will be held in 2024 subject to interest and availability.

Social Events - Camilla Plumb said that she had not had sufficient spare time to organise a Social Event for September 2023 and therefore the next event will be the Christmas Tree Event on 10th December 2023. The Chairman has booked the Ukelele Band again this year.

Planning Applications - 23/00474/CTR - to fell and remove the 5 dead elm trees at the front of the driveway. To prune back the trees growing either side of the swimming pool to give clearance from the pool at 3 Old Rectory Drive, Thornhaugh, Peterborough – Permitted; Planning Appeal for 22/00506/FUL – Change of use from agricultural land to garden land at Croft Farm, Meadow Lane, Thornhaugh – Appeal Dismissed. The Chairman had contacted Peter Sharpley to thank him for putting up the interim signs about guests not using that area as a garden, and fencing part of it off to accommodate sheep in one end of the paddock, as this has been a great help in stopping its use by Croft Farm guests. Since the Appeal Decision, Peter Sharpley has confirmed that he is planning to fence off the area at the back of the two holiday lets as well as the rest of the paddock which he is in the process of arranging; 23/00569/FUL - Redevelopment of land for an Electric Vehicle Charging Station providing electric car charging points at Abbots Wood Service Station, Great North Road, Thornhaugh – Awaiting Decision; 23/00647/LBC - Proposal: Replace rear door, proposed new doors, replacement of windows and reinstate the overgrown loose gravel at

Avebury Cottage, 8-12 Meadow Lane, Thornhaugh – Awaiting Decision and 23/00852/FUL - Proposed Cattery, temporary mobile home and small pet crematorium at Magnolia House, Old Oundle Road, Thornhaugh – No Objections/Support

Parish Council Vacancy – the notices advertising the Parish Councillor Vacancy due to the resignation of Neil Croft-Taylor on 17th July 2023 had been put on the Noticeboards and on the Website. As 10 or more electors had not requested an election, the vacancy will be filled by co-option. A notice advertising the vacancy will be put on the Noticeboards, the Website and in the Newsletter with a closing date of 11th September 2023.

The Chairman will attend the next meeting of the Augean Liaison Meeting along with Hallie Hardy.

Peter Sharpley had contacted the Chairman to report that the fence next to Croft Farm has been increased in height without Planning Permission. After discussion and looking at advice on the Government Planning Website it was agreed that the Chairman will contact Peter Sharpley to suggest that the first approach should be for the two parties involved to try and resolve the issue between them. Gavin Eley also confirmed that that would be the normal approach. This is consistent with the actions the Parish Council have taken in the past relating to boundary/planning compliance issues. If the two parties cannot reach a resolution, then Peterborough City Council would need to be involved and as an individual Peter Sharpley is at liberty to contact them as the neighbour affected by the fence. If he believes assistance from the Parish Council is required after that, he should contact the Parish Council who will have further discussions about the issue. The Chairman will contact the Anulkat Family to explain the Parish Council has had a complaint about the fence height to ensure that all parties are aware.

Yana Clipsham said she had enjoyed attending the recent RAF Reception which was a community event designed to give local councils and businesses the opportunity to discuss any issues.

The Village Sign is currently being re-painted/refurbished and the Chairman had asked for the addition of a commemorative plaque to mark King Charles III's Coronation be added to it.

It was noted that the Coronation Coins have been distributed.

Yana Clipsham agreed to become the Parish Council's Representative on the Christie Hall Committee. The Clerk will inform Lisa Chambers of Christie Hall.

The next Thornhaugh Parish Council Meeting will take place at **7.00 pm on 18th September 2023 in St Andrew's Church.**

## **SIBSON-CUM-STIBBINGTON PARISH COUNCIL**

The next meeting of the Parish Council will be on **Thursday 7th September, 2023 at 7pm** in the Christie Hall. A report will appear in a future edition of Living Villages.

## Wansford Youth Council

In August children from all over Wansford got together to start work on improving the environment in our beautiful village. They made their own bug hotels, filled birds feeders and planted almost 100 flowers. They have distributed their work throughout the village to encourage wildlife. There are a few spare plants in circular pots around the Village Sign outside the church. If you would like to take one to decorate the outside of your house, please help yourself!

**Our next meeting is on the 26th September**, please get in touch with Jane Taylor-Pitt or The Clerk at Wansford Parish Council if you would like to be involved. Details on the Parish Council Website.



**TOBIAS COLTON** (BA)(Hons) DipPFS  
Principal  
**TOBIAS COLTON WEALTH MANAGEMENT**  
Associate Partner Practice of St. James's Place Wealth Management  
07468 428 380  
tobias.colton@sjpg.co.uk  
www.tobiascoltonwealthmanagement.co.uk



  
**ST. JAMES'S PLACE**  
WEALTH MANAGEMENT

The Partner Practice is an Appointed Representative of and represents only St. James's Place Wealth Management plc (which is authorised and regulated by the Financial Conduct Authority) for the purpose of advising solely on the group's wealth management products and services, more details of which are set out on the group's website [www.sjpg.co.uk/products](http://www.sjpg.co.uk/products). The 'St. James's Place Partnership' and the titles 'Partner' and 'Partner Practice' are marketing terms used to describe St. James's Place representatives.

# Wansford Horticultural & Craft Society

*'Wow what a busy time'*



*Something so so special about our Show, is the extent to which we get such generous help from so many in the village and surrounding area.*

We always strive to give a Warm Wansford Welcome.

## ***A big thank you to our sponsors***

Bradshaw's Electric Vehicles,  
 Heartys of Peterborough,  
 The Papermills,  
 Berryfields Weddings,  
 The Cross Keys,  
 Instep Foot Clinic,  
 Living Villages,  
 Flowers by Tanya  
 and The Haycock Manor Hotel.

Gary Punter & Quentin Arnold  
 Show Chairs

*If you wish to share photos of the event, please send to myself below or post on our Facebook page at [www.facebook.com/wansfordshow/](http://www.facebook.com/wansfordshow/).*

*The Show report will be in the October Living Villages.*



***We are proud to be raising monies for Sue Ryder Hospice at Thorpe Hall who do such great work.***

## ***A big thank you to our volunteers***

*Hopefully, We have captured as many of the volunteer cast as possible.*

**THANK YOU GUYS - MANY HANDS MAKE LIGHT WORK**

<b>Show Committee</b>		<b>Volunteers contd.</b>	
Gary Punter	Chair	Mark Hopkins	set up/strip down
Quentin Arnold	Treasurer & Chair	Age Duffin	set up/strip down
Ian Wright	Site Manager	Carole Duffin	set up/strip down
Mandy Veni	Tombola	David Dunn	set up/strip down
Rhona Punter	Secretary/Marquee	Ian Wright	set up/strip down
Jon Oldfield	Car Parking	Nigel Fawthrop	set up/strip down
Age Duffin	Art in the Marquee	Gary Punter	set up/strip down
Debbie Winterton	Children's Fun	Quentin Arnold	set up/strip down
Annie Bradshaw	Promotion	Daniel Parker	set up/strip down
Hattie Arnold	Tea Tent/promotion	Brian Hollidge	set up/strip down
Nigel Fawthrop	Plant Stall	Marcus Arnold	set up/strip down
Sue Arnold	1st Aid/child classes	Liz Harris	set up/strip down
Jim Boulton	Tug of War & MC	Mandy Veni	set up/strip down
Marcus Arnold	Stewarding	Steph Lord	set up/strip down
Liz Harris	Adult classes & raffle	Mel Hutchinson	set up/strip down
<b>Volunteers</b>		Viki Warren	set up/strip down
Kate Hopkins	Tickets	Penny Dunn	Plants
Carole Duffin	Tickets	Janet Fawthrop	Plants
Annette Johnson	Tickets	Nigel Fawthrop	Plants
Jane Taylor	Tickets	Nicholas Warliker	Plants advice desk
Ashley Mather Holman	Tickets	Debbie Winterton	children's
Vanessa Ingham	Tickets	Sharron Tonkin	children's
Debbie Crocker	Tickets	Kelly Parker	children's
Alison Queenborough	Tickets	Lynn Foreman	children's
Jo Roberts	Tickets	Marcus Arnold	General site stewarding
Annie Bradshaw	Tickets	Mandy Veni	General site stewarding
Mary Marleau	Tickets	Annie Bradshaw	General site stewarding
Jon Oldfield	car parking	Rhona Punter	Show classes admin.
Steve Roberts	car parking	Gloria Malton	raffle
Mike Penhaligon	car parking	Annette Martin	raffle
Simon Morris	car parking	Liz Harris	raffle
Steve Titchmarsh	car parking	Bridget Bradley	raffle
Marcus Arnold	car parking	Jill Ward	Raffle
Andy Tonkin	car parking	Neil Malton	Judge Photos
Steve Foreman	car parking	Pete Malton	Steward Photos
Graham Stevens	Car Parking	Rosemary Gadsby	Judge Floral Art & Craft
Ian McGregor	car parking	Liz Harris	Steward Floral Art & Craft

Dave Pickup	car parking	Nicholas Warliker	Judge Veg/Fruit
Mel Hutchinson	Car parking	Ursula Buchan	Judge Veg/Fruit
Mark Hopkins	set up/strip down	Annette Martin	Steward Veg/Fruit
Age Duffin	set up/strip down	Julie Walton	Judge Food & Drink
Carole Duffin	set up/strip down	Bridget Bradley	Steward Food & Drink
David Dunn	set up/strip down	Julie Walton	Judge Art
Ian Wright	set up/strip down	Bridget Bradley	Steward Art
Nigel Fawthrop	set up/strip down	Sue Arnold	Childrens Judge/Steward
Gary Punter	set up/strip down	Julie Walton	Childrens Judge/Steward
Quentin Arnold	set up/strip down	Lisa Corley	Childrens Judge/Steward
Daniel Parker	set up/strip down	Denise Brown	Childrens Judge/Steward
Brian Hollidge	set up/strip down	Charlotte Ayres	Childrens Judge/Steward
Marcus Arnold	set up/strip down	Sue Arnold	Prize giving
Liz Harris	set up/strip down	Tina Bullen	Sacrewell Cup
Mandy Veni	set up/strip down	Hattie Arnold	tea tent
Steph Lord	set up/strip down	Barney Lancaster Adlam	Tea tent
Mel Hutchinson	set up/strip down	Julie Walton	tea tent
Viki Warren	set up/strip down	Will & Sian	tea tent
Dave Slack	Field preparation	Sarah Oldfield	cakes for tea tent
Mark Hull	Trailer loan (stage)	Mandy Veni	Tombola
Paul Styles	Cricket Club beer tent	Barry Veni	Tombola
Phil Roberts	beer tent license	David Tooley	Tombola
Chris Turner	WI children tombola	Elin Flo Styles	Tombola
Susan Joyner	WI children tombola	Caroline Ashley	Tombola
Stuart Fenn	Flyer Graphic design	Jim Boulton	Tug of War
Mike Bradshaw	Loan of field	Brian Hollidge	Referee

## There's No Business like Show Business!



Friday 20<sup>th</sup> October

7:45

Nassington Church



Join the Yarwell and Nassington Band for a sparkling evening of entertainment!

Bar and Raffle

Tickets £10 from Nassington Stores, Mould's Butchers and Eventbrite. Buy 10 get one free.

Supporting the Nene Valley Care Trust



## FENLAND DISTRICT BROKERS LTD

Your business needs protection at so many levels.  
We can advise on full Insurance Coverage.  
Local, reliable and experienced.



**FOR ALL YOUR BUSINESS INSURANCE NEEDS**

0808 175 3050 | 22 Cecil Road, Peterborough | [www.fdbltd.co.uk](http://www.fdbltd.co.uk)

Fenland District Brokers Ltd are an Appointed Representative of Ten Insurance Service Ltd which is authorised and regulated by Financial Conduct Authority.

# tmk

TILES + INTERIORS

Carefully selected tiles from established UK, Italian and Spanish suppliers, all with style, quality and value in mind.



Station Road, St Ives, Cambs PE27 5BH



[tmktiles.co.uk](http://tmktiles.co.uk)



01480 266321



## Wansford in England CC Fixtures 2023



Date	Opponents	Venue	Result/ Time
Sunday 3/09/23	Hampton	Away	1pm
Sunday 10/09/23	Woodford	Home	1pm
Sunday 17/09/23	Orton	Away	1pm
Sunday 24/09/23	Burghley park	Home	1pm

# PETER RIDDINGTON LANDSCAPING

We supply and install Patios & Pathways, Decking, Stone Walls and Fencing, We plant Trees, Shrubs Hedges and Flowers, and offer a complete Garden Maintenance and Improvement Service. Garden design service provided  
Contact Peter Riddington today for a free quotation

4 LOCKS GREEN, YARWELL, PETERBOROUGH PE8 6PY  
Telephone: 01780 783004 Mobile: 07860 962068  
Email: peter@peterriddington.co.uk



Registered  
Business



**jc.heating**  
SERVICES

Oil boiler servicing and  
repairs, heating controls,  
hot water service and repairs.

Your local heating expert for  
over 15 years.

Jo Childs,  
8 Black Swan Spinney,  
Wansford.

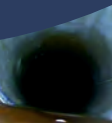
**Mob : 07729036942**



## Perfect Drainage Solutions

Your Drainage Experts (est 2023)

Gutter Cleaning  
CCTV Drainage  
High Pressure Water Jetting  
Drain Blockage Clearance  
Tanker Service  
Repairs



**07817723610**

**info@pdsLtd.co.uk**

**www.perfectdrainagesolutions.co.uk**

# DIRECTORY OF CONTACTS

## For all enquiries, contributions and adverts

<b>Craig Bunday</b>	craig@ascotgraphics.co.uk	07771 538661
<b>Ascot accounts</b>	accounts@ascotgraphics.co.uk	01487 801301

## Parish Councils

Sutton	Deirdre McCumiskey (Clerk)	01780 782668
Wansford	Marie Lewis (Clerk)	07899 732049
Sibson-cum-Stibbington	Charlotte Newman - sibson.cum.stibbington@gmail.com	
Thornhaugh	Deirdre McCumiskey (Clerk)	01780 782668
Water Newton (Parish Meeting)	Caroline Nathan (Chairman)	07989 362514

**City Councillor ( Wittering Ward) - Gavin Elsey** **07738930599**

## Churches

<b>Ministers:</b> Thornhaugh & Wansford		01780 782271
Stibbington, Sutton, Castor & Water Newton		01733 380900
	<a href="mailto:admin.castor@btconnect.com">admin.castor@btconnect.com</a>	

## Churchwardens:

St Andrew's Thornhaugh:	Stuart Foreman	01780 783220
	Liz Kemp	01780 782333
St Mary's Wansford:	Caroline Ashley	01780 782408
	Alan Jones	01780 783205
St John the Baptist, Stibbington	Charlotte Bradshaw	01780 781805

## Friends:

St Mary's & St Andrew's	Caroline Ashley	01780 782408
St Remigius Water Newton	Jack Ward	01733 394646

## Other useful contacts

Neighbourhood Policing 101	P'boro City Council	01733 747474
Wansford Surgery	Royal British Legion	01780 782200
(Out of hours	Stibbington & Wansford WI .	.781733
111 option 4)		
Wansford Pharmacy	Cricket Club	07860 278800
Communicare	Horticultural Society	01780 592514
H'don District Council	Stibbington Centre	01780 782386

## Website [www.livingvillagesmagazine.co.uk](http://www.livingvillagesmagazine.co.uk)

©2023 Living Villages Magazine The contents of this magazine may not be copied, reproduced, distributed, republished, downloaded, displayed, posted or transmitted in any form or by any means without the prior written permission of Living Villages Magazine. You may not distribute, display or copy any of the contents of the pages contained in this magazine to third parties without the prior written permission of Living Villages Magazine. All images shown in this magazine are the property of Living Villages Magazine unless otherwise accredited to another. Images may not be used without the prior written permission of Living Villages Magazine or the accredited owner. Unless otherwise specified, the authors of the literary and artistic works in the pages in this magazine have asserted their moral right pursuant to Section 77 of the Copyright Designs and Patents Act 1988 to be identified as the author of those works. If permission is sort and given, it is expected that all articles/images be accredited to either Living Villages Magazine or the author of said articles/images. The views expressed in articles published are strictly those of the writer, and not of Living Villages. Living Villages cannot vouch for products and services advertised, nor accept any liability resulting from the purchasing of product/sor services, although care is taken to ensure their suitability.

## NEED A LOCAL PLUMBER?

**PlumbCall** Plumbing & heating  
Same day / next day service!

- Gas, Electric, Oil, LPG & Solar
- Central heating: Full design & installation
- High efficiency boilers
- Boiler / combi replacements
- Central heating, boiler breakdown & plumbing aftercare
- Underfloor heating specialist
- Power flushing
- Landlord certificates
- Free estimating service
- Annual servicing
- All work guaranteed
- OFTEC Registered

**12 year manufacturer's guarantee on selected boilers**  
(Terms & Conditions apply)

**CALL US TODAY!**

**01733 243 047**

**or 07860 257 803**

E: [advice@plumb-call.co.uk](mailto:advice@plumb-call.co.uk)

W: [www.plumb-call.co.uk](http://www.plumb-call.co.uk)

Gas Safe Register No.8494  
LPG Registered



\*subject to acceptance terms and conditions apply



# NORTON RICKETT

Local *Independent* Estate Agents

- Free Market Appraisals
- Probate Valuations (*RICS Surveyor*)
- Local – Office near Wansford
- Established & Trusted since 2012
- Advertising on Rightmove
- Office Presence in London

**10**  
**YEAR**  
**ANNIVERSARY**

[www.nortonrickett.co.uk](http://www.nortonrickett.co.uk)

01780 782 999



# Crown

## Property Services

- 👑 Electrical & Plumbing
- 👑 Kitchens & Bathrooms
- 👑 Renovations
- 👑 Extensions
- 👑 Windows & Doors
- 👑 Groundworks
- 👑 Landscaping
- 👑 Internal Refurbishment

Old Sulehay Cottages, Sulehay Road, Wansford, PE8 6PA

### 07766 168659

jonathon@hibbins.me

# Village Pizzas

Open Tue – Sat for  
Collection / Eat-In at  
Leedsgate Farm  
4.30pm – 10pm  
Or  
Delivery 6pm till 10pm

## 01780 784587

View our Menu at  
[www.villagepizzas.co.uk](http://www.villagepizzas.co.uk)



Mat based Pilates and Chairotics  
Classes for all levels

## MAT BASED PILATES

1 hr classes

Online on Zoom, or in person at  
Christie Village Hall (Wansford) and Harringworth Village Hall

Monday, Tuesday, Wednesday and Thursday  
£3.50 online / £6 in person



Ease back pain  
Strengthen your core, abs and back  
Improve sports performance  
Exercise without joint pain  
Increase your flexibility  
Boost brain power and focus

Christie Village Hall:  
18:00 Monday /  
12:30 Wednesday / 18:00 Thursday  
Online:  
16:45 Monday / 11:30 Thursday  
11:00 & 12:30 Tuesday

Justine Bromage  
Fully Qualified Level 3 Pilates Instructor  
Level 3 Personal Trainer  
RSA to Music Instructor

Justine  
BROMAGE FITNESS

[justwhim@hotmail.com](mailto:justwhim@hotmail.com)

07919 106156



## Greenwood homecare

## Do you need care visits at home?

Greenwood Homecare  
provides quality care  
in Peterborough and  
the surrounding areas

✓ FREE ASSESSMENT

📍 DAY, LIVE-IN OR NIGHT  
CARE AVAILABLE



FOR MORE INFORMATION

Visit: [Greenwoodhomecare.co.uk](http://Greenwoodhomecare.co.uk)

Email: [Peterborough@greenwoodhomecare.co.uk](mailto:Peterborough@greenwoodhomecare.co.uk)

Call: **01733 808531**