

# *Living Villages*

Image taken by John Measures



*Water Newton Thornhaugh  
Stibbington Sutton Wansford*

*September 2022*



# Last Night of the Proms

**Yarwell & Nassington  
Britannia Brass Band**  
Friday 14th October  
Doors open 7:00pm Starts 7:45pm  
Bar and Raffle . Tickets £10

Tickets available from:  
Oundle Box Office 01832 279086,  
Nassington Stores,  
Mould's Butchers, Band Members, 01780 782200

**Proceeds to Nene Valley Care Trust**

## Editorial

Dear readers

I have to confess I didn't know what John's cover picture was this month! I am glad that he sent me details - is it a bird? Is it a plane? No, it's a Hummingbird Hawk Moth, taken with extreme patience by our intrepid cover photographer! A pleasant reminder that as I write we are still in summer, with **The Wansford Show** about to take place - a list of 'thank you's' from Gary and the committee are on pages 12 and 13. BUT, as you read this, summer will have been and gone, the schools will be back, and we are in the final quarter of the year.

We continue to support **The Woolsey Charity** grant so include the overview again below. **The Augean Community Fund** is open for applications again on P15. Opposite is information about **Yarwell & Nassington Brass Band's** 'Last Night At The Proms' Concert. Elsewhere there are dates of the various Harvest Festivals in the villages, the WI, the Horticultural Society trip to RHS Garden at Bridgewater.

There's also an interesting article about the **Wansford Road Railway Station** (P14), and details of an Open Day at **Peterborough Masonic Centre** for those who would like to know more about Freemasonry (P25).

Please continue to support your local magazine with contributions, letters and articles, they are much appreciated. All our contact details, and those of all your local contacts, plus important numbers, are listed inside the back cover.

Best wishes

Craig

### Contents

6	Worship & Benefices
10	Stibbington and Wansford W.I.
12	Wansford Cricket Club Dates
17	Parish Council Notices and Minutes
20	Wansford Horticultural & Craft Society
22	Letters
26	Contacts

### Studying for a course?- Did you know you can apply for a grant?

Since the early 1990s the **Reverend Thomas Woolsey's Charity** has been giving for equipment to all students from Thornhaugh and Wansford for further education, apprenticeship or skills.

The Trustees of the charity will be meeting in September to allocate the grants, so there is plenty of time for any student to apply. Go to the website **thewoolseycharity.co.uk** to for more information and complete the application form.

Lisa Chambers, Secretary, Rev. Thomas Woolsey's Charity

## WANSFORD COMMUNITY HALL

Peterborough Road, Wansford

This hall accommodates parties of up to 36 people seated. Ideal for Meetings, Workshops, Aerobics etc

GREAT VALUE AT ONLY £4 per hour  
FOR BOOKINGS TELEPHONE  
John Stannage 07879 485330

Capitol Lettours



Your local property agent  
With over 30 years of  
experience  
Relocation, Lettings and Sales

Please call our office for a  
competitive quote

Peterborough - 01733 553366

(enquiries@capitollettours.com )

[www.capitollettours.com](http://www.capitollettours.com)

## BARKLEYS GARDEN SERVICES

Grass cutting, weeding,  
hedge trimming  
Lady gardener  
available

Bev & Peter  
Ailsworth  
(01733) 380480  
07593721144

[beverleybarkley1@gmail.com](mailto:beverleybarkley1@gmail.com)



## GRIFFIN

Solid Fuel Merchant  
Supplier of Pre Packs

Coal Bunkers Charcoal Compost  
Flo Gas Logs & Sticks Salt

Coal Yard  
Station Road  
Nassington  
01780 782540

Office  
12 Church Hill  
Castor  
01733 380470



Dry carpet cleaning and upholstery  
cleaning services in Peterborough and  
the surrounding areas.

Whether you have an individual chair or  
carpet in a domestic property, or are  
interested in contract carpet cleaning in  
your business, you can benefit from our  
35 years experience.

Telephone: **01832 280429**

Mobile: **07951 124374**

Email: [info@bcnmulticlean.co.uk](mailto:info@bcnmulticlean.co.uk)

## WHO LET THE MEN OUT?



A chance for all men from our local villages to meet  
and socialise over a tasty breakfast  
(Apethorpe, Woodnewton, Nassington, Yarwell,  
Wansford and Thornhaugh)

**Saturday 24<sup>th</sup> September**

**8.30am – 10.00am**

The Willow and Brook, Apethorpe, PE8 5DG

Full English breakfast and guest speaker

RSVP to help cater with approximate numbers or for any  
queries please contact Ian Scott

[mensbreakfast@btconnect.com](mailto:mensbreakfast@btconnect.com)

For more details please see the article in the local village magazines.

# NEED A RECOMMENDATION?

The **ONLY** Police Checked recommended register of local approved traders

**FREE** and **EASY** service



**safelocaltrades.com**<sup>®</sup>

Recommended & Approved



Much more than just a recommendation ...

## Serving the PE Postcode community since 2008

Over 70 different trade categories and over 16,900 reviews

Here are some of our members ...

**New Garage Door & Repairs**



**GARAGE DOOR & SHUTTER SERVICES**

[www.garagedoorandshutterservices.co.uk](http://www.garagedoorandshutterservices.co.uk)

Call Dave on

**07709 337647**

**Electrician**

**OLD COURT ELECTRICAL**

[www.oldcourtelectrical.co.uk](http://www.oldcourtelectrical.co.uk)

Call David on

**07973 507420**

**Driveways & Patios**



[www.cambridgeshiredriveways.com](http://www.cambridgeshiredriveways.com)

Call us on

**01733 810063**

**Building & Carpentry Services**



**Steve Deprez & Son**  
Building • Brickwork • Carpentry

Preserving the past. Building the future

[stevedeprezbuilders@gmail.com](mailto:stevedeprezbuilders@gmail.com)

Call Steve on

**07414 292188**

**Garden Makeovers & Hard Landscaping**

**STYLE HOME IMPROVEMENTS LTD**

[www.styleimprovements.com](http://www.styleimprovements.com)

Call Tony on

**07879 881315**

**Carpet & Upholstery Cleaning**

**STAINBUSTERS CARPET CLEANERS PETERBOROUGH**

[www.peterborough-carpetcleaners.co.uk](http://www.peterborough-carpetcleaners.co.uk)

Call Steve on

**07818 058490**

**Plumber (Heating & Gas)**



**Willow SERVICES**

[www.willowservices.co.uk](http://www.willowservices.co.uk)

Call James on

**01733 590501**

**Thousands of Reviews**



**Keeping it Local**

**In association with ...**



Neighbourhood and Home Watch  
Looking out for the community



To see our full list of members and read all reviews just go to ...



**[www.safelocaltrades.com](http://www.safelocaltrades.com)**



**0800 014 1832**



The safest way to source local traders



**Tear out page and keep**

# WORSHIP DATES

**Every Sunday 5.00pm - Zoom 'At Home' Service. Log in and phone details from Rev. Jane [jdtailby@aol.com](mailto:jdtailby@aol.com) 01780 782271**

## St. Leonard's, Apethorpe

4 <sup>th</sup>	11.00 a.m.	Holy Communion
18 <sup>th</sup>	11.00 a.m.	Holy Communion

## St. Mary's and All Saints, Nassington

Every Thursday 9.30 a.m. Holy Communion BCP		
4 <sup>th</sup>	8.15 a.m.	Holy Communion BCP
	9.30 a.m.	All Age Communion
11 <sup>th</sup>	9.30 a.m.	Holy Communion
18 <sup>th</sup>	9.30 a.m.	Holy Communion
25 <sup>th</sup>	9.30 a.m.	Family Service and Crafts

## St. Andrew's, Thornhaugh

4 <sup>th</sup>	9.30 a.m.	Holy Communion
18 <sup>th</sup>	9.30 a.m.	Holy Communion

## St. Mary's, Wansford

Every Wednesday 10.00 a.m. Morning Prayer		
11 <sup>th</sup>	9.30 a.m.	Holy Communion
25 <sup>th</sup>	9.30 a.m.	Holy Communion

## St. Mary's, Woodnewton

4 <sup>th</sup>	9.30 a.m.	Holy Communion
18 <sup>th</sup>	9.30 a.m.	Holy Communion
25 <sup>th</sup>	8.30 a.m.	Holy Communion BCP

## St. Mary Magdalene's, Yarwell

11 <sup>th</sup>	11.00 a.m.	Holy Communion
18 <sup>th</sup>	3.00 p.m.	Methodist Service
25 <sup>th</sup>	11.00 a.m.	Holy Communion

September always has the feeling of "new year" to me, and I don't suppose I am the only one. I imagine we all have memories of the new school year as children, returning after long summer holidays (and didn't they seem long when we were young!?), whether that was with enthusiasm for the activities of the new school year or reluctantly, preferring the freedom of the holidays. For parents, of course, the new school year means getting children back into a daily routine and helping them face the challenges and tasks ahead of them. For teachers, there is a different sense of starting afresh as the new academic year begins. When I was teaching I used to love the sense of a "clean slate" represented by the new exercise books given out; clean pages given out ready to be filled, the mistakes of the previous year put away in the old books.

Of course, we encounter new starts in so many different ways. After the heat and drought of mid-August, there will be the refreshment of rain renewing the land, giving newly planted crops the chance to germinate and thrive. Perhaps there will be new planting in your gardens to replace or refresh what has suffered during the dry conditions.

During the summer it has been a delight to share in marriage services when couples make a new start as husband and wife, getting used to being called Mr and Mrs (!), and in baptisms when we celebrate new life or a new family commitment to Jesus. Perhaps there has been a house move or some other new start in the life of your family or friends recently, or the beginning of a new project of some sort.

You'll probably be expecting me to mention the Christian promise of a new start of forgiveness, available to us all at any time, and of course, that is where I am going with this. A new start of any kind involves a looking back at what needs to be changed, what we can take forward with us into the new situation, and in one way or another that works for all the examples I've mentioned, as well as any new start with God. The joy, though, is that He always welcomes our desire to begin again and honours that intention.

Perhaps this September "new year" will get you thinking about a new start of some sort for yourself. Whatever the autumn holds for you, may it be a time of blessing, expectation and hope.

With every blessing,

*Rev. Jane*

## **A Date for the October Diary:**

We will holding our Harvest Festival Service at Thornhaugh on 2nd October at 9.30 am. This will be an informal service of celebration and thanksgiving for the agricultural year – all are welcome!

## REFLECTIONS

## CASTOR BENEFICE

We are still maintaining the following service pattern every Sunday in each of our **Parish churches** until further notice.

**Marholm** 9.00am - Holy Communion (Morning Prayer on 4th Sunday)

**Castor** 8.00am Holy Communion (said service) 10.15am - Sung Eucharist

**Sutton** 9.00am on 4th Sunday of the month - Holy Communion

Every **Wednesday** morning at **10am** there is a service of Holy Communion at **Castor**.

We still continue to celebrate **Evensong via Zoom at 6pm every Sunday**, if you wish to join us please contact the Benefice office for the Zoom link and access code.

[admin.castor@btconnect.com](mailto:admin.castor@btconnect.com)

The next service at **St. John the Baptist, Stibbington** will take place on **Sunday 9th October at 4pm for Harvest Thanksgiving**, (see below, right) do come along, you will be assured of a very warm welcome, refreshments will be served afterwards.

**David Ridgeway**

### ST REMIGIUS CHURCH WATER NEWTON

Come and join us

on Sunday 25th September at 1 pm for  
Harvest Festival and to celebrate the Feast of St.  
Remigius



This curious figure which survived the Reformation can be found on the west face of the tower. Underneath is an inscription which reads in Anglo-French "You who pass by for the soul of Thomas Purdeu pray". Figures such as this were usually put by roadsides and may indicate that the track that passes the west end of the church was originally a main ancient track crossing the Nene by seasonal ford.

As this is harvest time, please do bring along tinned or dry food which we will add to those collected at Castor for delivery to local food banks.

Refreshments will be served following the service (with a nominal donation OF £5 to The Friends).

### ST. JOHN THE BAPTIST STIBBINGTON

HARVEST THANKSGIVING

SUNDAY 9th OCTOBER, 4.00 pm



REFRESHMENTS WILL BE SERVED  
AFTER THE SERVICE

Do come and join us, you will be  
assured of a very warm welcome

## The Friends of St Mary's and St Andrew's

Update from the Friends- there will be Coffee Stops in St Mary's church on 14th and 28th September, from 10.30- 12.

We are still supporting Thorpe Hall via our proceeds, please call in for coffee, home baking and to support a very worthwhile cause.

**Caroline Ashley**



Your friendly, reliable and honest local heating experts

- ✓ Boiler repairs
- ✓ Emergency callouts
- ✓ Boiler installations
- ✓ Gas
- ✓ Oil
- ✓ LPG

[www.fixfirstheating.co.uk](http://www.fixfirstheating.co.uk)

Call Chris Welch on 01733 315065/07856 518842  
or email [chris@fixfirstheating.co.uk](mailto:chris@fixfirstheating.co.uk)



## New Luxury Care Home



Our family, caring for yours

### Castor Lodge Care Home

At Castor Lodge, our care is the kind we would want all of our loved ones to receive. Offering residential and dementia care, our dedicated team make life comfortable and enjoyable for all our residents, allowing them to live safely and as they choose. Our brand new home is luxurious and beautifully furnished, whilst retaining a warm family atmosphere that makes Castor Lodge feel extra special.

- 68 Spacious en-suite bedrooms
- 6 Premium self-contained suites
- Bistro Café and themed pub
- Sociable lounge and dining areas
- Roof terrace and landscaped gardens
- Hair and pamper salon
- Daily fine dining
- Tailored meaningful activities

To find out more about life at Castor Lodge contact our Customer Relations Manager Laura Mills on 07725 799 217 or email [laura.mills@countrycourtcare.com](mailto:laura.mills@countrycourtcare.com)







## THE ARTS SOCIETY PETERBOROUGH

The Arts Society (a leading arts education organisation) brings people together through a shared curiosity for the arts. Each year The Arts Society Peterborough (TASP) holds nine illustrated talks on many interesting, informative and entertaining topics. The talks are held at The Fleet in Fletton, Peterborough on the second Thursday of each month (except June, July and August) starting at 10.45am. They are a good way to meet likeminded people, chat with friends over a cup of coffee before the talk commences, and non-members are always welcome to join us.

In addition to the live talks, annual members also receive additional benefits. If you wish to find out more about our Society or about becoming a member, please visit our website for more information: [www.the-arts-society-peterborough.org.uk](http://www.the-arts-society-peterborough.org.uk). This year's varied programme of talks includes The Koh-i-noor Diamond; Why Morocco got painted Blue; 20<sup>th</sup> Century Sculpture; The Fascination of Jewellery, and Is Christmas in Good Taste? More details about each of these talks can be found on our website. Our next two talks are described below:

### 8th September 2022

#### **Morocco Blues - Why and how Morocco got painted blue by Elizabeth Gowing.**

The stories behind the blue pigment used for the fishing boats and doorways of photogenic Essaouira on the Moroccan coast.

### 13th October 2022

#### **Constantin Brancusi and 20th Century Sculpture by David Worthington.**

How the son of a peasant from rural Rumania became an internationally famous artist and one of the most important sculptures of the 20th Century.

## PIANO LESSONS IN PETERBOROUGH

**Ann Burden ALCM PGCert BSC(Hons)**

**Please contact [annburden684@msn.com](mailto:annburden684@msn.com) or ring 07702363337**

**QUALIFIED EXPERIENCED TEACHER**

No experience is necessary. I can teach you to play for pleasure or towards an exam; I currently work for the London College of Music. Lessons are tailored to your requirements.

If you would like to take up a new hobby or rekindle an old one I would love to hear from you. I am happy to take children from the age of three upwards and there is no age ceiling.

I teach a wide range of instruments primarily piano, keyboard, guitar, violin, clarinet and saxophone. Other instruments are also available so please feel free to contact me with requests. I also teach music theory.

**\*\*Online classes also available\*\***



## STIBBINGTON & WANSFORD WI

### Today's women working for tomorrow's world

August has been a busy month for the Ladies of Stibbington & Wansford WI. At the beginning of the month, we all met at Tolethorpe for our annual sharing picnic, followed by a very entertaining performance of 'The Spider's Web'. An Agatha Christie whodunnit with laugh out loud moments.



By the time you get to read this article, Wansford Show would have taken place. We had great fun getting all the prizes together for the children's tombola and meeting the many visitors over the day. We would like to say thank you to all of you that visited our stall. The money we raised has been in support of Sue Ryder, Thorpe Hall. Next month I will be able to let you know how much we have raised.

Book club met at the end of July, and following a lively discussion about books we had read, as well as those we hope to read, we put together a summer reading list together based on our evening;

**The keeper of stories** by Sally Page

**The seven husbands of Evelyn Hugo** by Taylor Jenkins Reid

**Rules for a perfect murder** by Peter Swanson

**Bridgerton** series by Julia Quinn

**The merchant's house** by Kate Ellis

**The funny thing about Norman Foreman** by Juliette Henderson

This is not an hierarchal list, but one that we can all read a book or two (in my case maybe more!).

Our next meeting is on September 13th, where Heidi Field will be speaking on Waste & recycling.

Now that we are meeting in St Mary's Church visitors are most welcome to our monthly meetings to hear our visiting speakers. Please see below for our upcoming events:

#### Future events:

Tuesday 13th September, 7pm W.I. meeting St Mary's Church – Speaker Heidi Field, topic waste and recycling

Tuesday 4th Sept, 2-4pm Coffee & Craft club, at St Mary's Church.

Tuesday 18th Sept, 2-4pm Coffee & Craft club, at St Mary's Church.

Thursday 29th Sept, 7.30pm Book Club meeting, at The Cross Keys Wansford

Both the Coffee & Craft club, and Book Club are open to all, not just for WI members only, and we look forward to others joining us.

Rhona Punter  
01780 592514  
Stibbington & Wansford WI

**Ladies**  
Would you  
like to sing?  
 **Singchronicity**

is a ladies four-part  
harmony chorus,  
based in Orton Wistow,  
Peterborough.

We rehearse on Tuesday evenings  
from 7.30 - 9.30pm

**We are actively seeking both  
new members  
and a new musical director**

For more information, please contact  
**Deana on 01733 234698 or  
deanafoot36@yahoo.com**

# PAWS AND CLAWS

★ ★ ★ ★ ★

## Boarding Cattery

*"Cats have a 'tail' to tell when they've 'paws'd' awhile at Wansford's 5 Star Purr Palace"*

**Tel 01780 782174**  
**e-mail**  
[pawsandclaws@hotmail.com](mailto:pawsandclaws@hotmail.com)




Working with Peterborough Cat Rescue to rehome cats and kittens seeking loving homes and laps on which to purr

Peterborough City Council & Rutland County Council  
 Licence Number: 078015

## Woodland Timber Products

Fencing, Play Houses, Gates  
 Pet Housing, Sheds



**01780  
783983**



Unit 4, Leedsgate Farm Business Park,  
 Kings Cliffe Road, Wansford PE8 6NX.  
 07748 787360  
[woodlandtimber.products@yahoo.com](mailto:woodlandtimber.products@yahoo.com)

**Local Housekeeper / Cleaning Lady**

Long term customer references ✓  
 Exceptionally high standards ✓  
 DBS registered ✓  
 Ofsted registered Nanny / Housekeeper ✓

**Telephone: 07741 468392**





Nail Surgery \* Corns, Calluses, Hard Skin \* Cracked Heels  
 Biomechanics & Orthotics \* Diabetic Foot Care \* Verrucae  
 Cryoaesthetics for Skin Lesions \* WP Nail Reconstruction

**Ear Ache?**

**Hearing Loss?**

**Blocked Ears?**

*It could just be wax!*

Safe, Gentle and Effective Ear Wax Microsuction and Hearing Screening Now Available

Now Accepting New Patients!



Sue Arnold BSc(Hons) MRCPod & Associates  
 19 Elton Road, Wansford, PE8 6JD  
[wansfordinstep@gmail.com](mailto:wansfordinstep@gmail.com)

**01780 783982**  
 Home Visits Available





Writing this article before the Show, we sincerely hope you all had a good time ! If you wish to share photos of the event, please send to myself below or post on our Facebook page at [www.facebook.com/wansfordshow/](http://www.facebook.com/wansfordshow/). The Show report will be in the October Living Villages.

At this time, we would like to thank all of those who have played a massive part in the planning and organising and have given up their time to make our Show a real community activity.

Hopefully, I have captured as many of the cast as possible.

**THANK YOU GUYS - MANY HANDS MAKE LIGHT WORK !**

<b>Show Committee</b>		<b>Volunteers contd.</b>	
Gary Punter	Chair	Mark Hopkins	set up/strip down
Quentin Arnold	Treasurer/ViceChair	Age Duffin	set up/strip down
Mandy Veni	Tombola	David Dunn	set up/strip down
Rhona Punter	Show Marquee	Keith Alvey	set up/strip down
Jon Oldfield	Car Parking	Ian Wright	set up/strip down
Keith Alvey	Site Plan and Risk	Nigel Fawthrop	set up/strip down
Debbie Winterton	Children's	Gary Punter	set up/strip down
Sam Sansbury	Stalls	Quentin Arnold	set up/strip down
Hattie Arnold	Tea Tent	Sam Sansbury	set up/strip down
Nigel Fawthrop	Plants	Brian Hollidge	set up/strip down
Ian Wright	Furniture Logistics	Marcus Arnold	set up/strip down
Sue Arnold	1st Aid	Dave Slack	Field preparation
Jim Boulton	Tug of War & MC	Mark Hull	Trailer loan (stage)
		Steve Broad	set up/strip down
<b>Volunteers</b>			
Marge Beuttell	Thank You speech	Penny Dunn	Plants
Kate Hopkins	tickets	Ruth Rigby	Plants
Carole Duffin	tickets	Janet Fawthrop	Plants
Annette Johnson	tickets	Nigel Fawthrop	Plants
Jane Taylor	tickets		
Dawn Ramsey	tickets	Debbie Winterton	children's
Vanessa Ingram	tickets	Sharron Tonkin	children's
Jeanette Morris	tickets	Lisa	children's
Debbie Crocker	tickets	Judith Harty	children's
Alison Queenborough	tickets	Lynn Foreman	children's
Jo Roberts	tickets	Jeanette Morris	children's
Shahin Ismal	tickets		

		Rhona Punter	Marquee organiser
Jon Oldfield	car parking	Gloria Malton	raffle
Steve Roberts	car parking	Annette Martin	Marquee & raffle
Ian Scott	car parking	Liz Harris	Raffle & Marquee
Mike Penhaligon	car parking	Bridget Bradley	Marquee & raffle
Simon Morris	car parking	Pete Malton	Marquee
Robin Wilson	car parking	Sue Arnold	Prize giving Marquee
Marcus Arnold	car parking		
Andy Tonkin	car parking	Hattie Arnold	tea tent
Steve Foreman	car parking	Sue Arnold	tea tent and cakes
Steve Broad	car parking	Julie Walton	tea tent
Hani Ismal	car parking	Sarah Oldfield	tea tent
Robin Griffiths	car parking	Lisa Corley	cakes
		Charlotte Ayres	cakes
Keith Alvey	Site stewarding	Samana Ismal	tea tent
Gary Punter	Site stewarding		
Marcus Arnold	Site stewarding	Jim Boulton	Tug of War
Mandy Veni	Site stewarding	Simon Morris	North team
		Steve Granger	South team
Gary Punter	Garden Question	Brian Hollidge	Referee
Paul Styles	Cricket beer tent	Mandy Veni	Tombola
Phil Roberts	beer tent license	Barry Veni	Tombola
		Jill Ward	Tombola
Caroline Ashley & team	Friends St Marys	Annie Bradshaw	Tombola
Chris Turner & team	WI tombola		
		Stuart Fenn	Graphic design

*And a big thank you to our sponsors*

Bradshaw's Electric Vehicles, Heartys of Peterborough, The Papermills, Bearyfields,  
The Cross Keys, Instep Foot Clinic and The Haycock Manor Hotel.

Gary Punter

Show Chairman ([garypunter@aol.com](mailto:garypunter@aol.com))

## Wansford in England CC Fixtures 2022



Date	Opponents	Venue	Result/ Time
Sunday 4/09/22	Ufford	Home	1pm
Sunday 11/09/22	Camra	Home	1pm
Sunday 18/09/22	Orton Park	Away	1pm
Sunday 25/09/22	Woodford CC	Home	1pm

## Wansford Road Station, Sutton

Many residents of the area do not even know of the existence of this fine old railway station even though it is just a few metres from the A47. It is in a hollow immediately north of the road just before the Sutton Heath Road. The station was built in 1867 as part of the "Bread and Onion" which then closed in 1929. Since then it has been used intermittently as a private house.

The latest plans for the A47 Wansford to Sutton upgrade will go over the station although the neighbouring railway bridge, which carries the A47 at present, will be retained. Both the bridge and the station are on the local list of significant buildings although neither is on the national lists. The local listing mentions the significance of the station and the bridge as a group. Rather than lose this heritage asset, a group of Sutton residents, led by Robbie Read and supported by all the local Parish Councils, came up with a plan to rebuild the old station immediately to the south of the railway bridge. In this location it would have a splendid view of the river and would function as a community centre providing a venue for school children to learn about the environment and other groups looking for a rural meeting place.



Part of the A47 development is the creation of a proper cycling and walking route along the road as well as under the railway bridge to meet up with the brideway to Sacrewell. The John Clare Countryside initiative is also setting up a network of trails using the footpath network along the river and the station would be at a node in this system. The station could also provide charging points for electric cycles, toilet facilities and possibly tea and coffee if there is enough demand.

To keep the building safe, part of it would be let as a residence for a caretaker family who would keep an eye on the area. This will also help to prevent a recurrence in the railway bridge area of the unpleasant activities that developed on the old Wansford picnic site.

Instead of taking up this initiative, National Highways have decided to give the building to Nene Valley Railway who intend to use it to replace a heavily vandalized building close to Railworld. This takes the station away from its original setting and destroys any linkage with the railway bridge and the local community. The attached cartoon shows how this dispute has progressed. It is not too late to stop this happening so please contact your City Councillor so that pressure can be applied through the planning system.



Richard Clarke

# Augean Community Fund

## August 2022

The **Augean Community Fund** uses monies provided by Augean under the Landfill Communities Fund.

The company's donations relate to its two landfill operations located at Thornhaugh near Peterborough, and King's Cliffe in Northamptonshire.

Recommendations on all grants from the Fund are made by King's Cliffe Environmental Association (KCEA) and Thornhaugh Environmental Association (TEA).

These two committees comprise volunteers from the villages of King's Cliffe, Thornhaugh and nearby, who are best able to represent local community priorities.

### Application Closing Dates

There are usually two funding rounds each year, the next two closing dates are:

**Wednesday 16 November 2022**  
decisions by End January 2023

**Wednesday 31 May 2023**  
decisions by Early August 2023



### Who can apply?

Groups with projects that are located within 10 miles of the King's Cliffe landfill site or the Thornhaugh landfill site may apply for grants. Priority will be given to applications received for projects located within 5 miles of Augean's Thornhaugh and King's Cliffe landfill sites.

### What can you apply for?

Grants are available for capital improvement works to public amenity projects.

Examples may include:

- Village halls
- Community centres
- Sports fields
- Nature reserves
- Public playgrounds
- Sports facilities
- Village greens
- Cycle paths
- Country parks

You can apply for grants of between £5,000 and £50,000.

Projects must be available and open to the general public as defined by ENTRUST (the Landfill Communities Fund regulator), as a minimum, for 4 evenings a weeks, or 2 days a week, or 104 days a year.

### Where can you find out more?

For more information about the Fund and how to apply, please visit GrantScape's website.

If you have a project idea that you would like to discuss before you apply, please contact the GrantScape team on:

**Telephone: 01908 247630**

**Email: [info@grantscape.org.uk](mailto:info@grantscape.org.uk)**

**[www.grantscape.org.uk](http://www.grantscape.org.uk)**

# OVER 50 YEARS EXPERIENCE

Car buying as it should be; simplistic, with no admin fees, no pressure and a wealth of knowledge to help you find your dream car.

**Great part exchange prices given**

**Finance from as low as 6.9%**

**[www.heartysofpeterborough.co.uk](http://www.heartysofpeterborough.co.uk)**

**01733 560605**

**[sales@heartysofpeterborough.co.uk](mailto:sales@heartysofpeterborough.co.uk)**



**HEARTYS**  
*of Peterborough*





Whilst Wansford Parish Council did not hold a meeting in the month of August its work continues for parishioners. The parish council now has **internet banking** after saying goodbye to cheque payments counter-signed by two parish councillors but authorisation of the new electronic system still requires councillors' dual authorisation. Also, in connection with banking, I'm pleased to write that HMRC has reimbursed the council all VAT paid on the past financial year's invoices which has increased the current account by £1,404.26.

At our July meeting the Clerk challenged Councillors to give some thought to a **short, medium and long-term strategy** for the work of the council and we should be grateful to hear from any parishioners who may wish to submit their ideas for this to the Clerk ([clerk@wansford-pc.gov.uk](mailto:clerk@wansford-pc.gov.uk)). We certainly want to give biodiversity consideration as well as to protect the heritage of the parish and one of our prime concerns is the amount of traffic that comes through the village and so our work on ideas for this continues. We're looking into the possibility of having an additional vehicle weight limit within the village as well as researching the viability of having a CCTV camera by Wansford's Grade I listed limestone bridge which occasionally sees vehicles crossing it that are well over its 3 tonnes weight limit.

The council has received many compliments about the newly painted **telephone kiosk** which houses a defibrillator but its smart red paint and golden crown now make the bus shelter look rather unloved and so we are working with Peterborough City Council to have it refurbished. Some parishioners may have noticed a grey box that sits atop a post on a section of the village green adjacent to St Mary's Church. This is actually a Royal Mail pouch box which has stood unused for many years and we have liaised with Royal Mail to ask for its removal and so it will soon be gone.

Our **next meeting** of the parish council will be held on **Monday, 12 September 2022** at 7.30 p.m. in the Community Hall, Peterborough Road, Wansford, and **Mr Lee Moore**, Peterborough City Council's Highway Inspection Manager and Public Rights of Way Officer will be our guest speaker on the subject of **permissive paths/permissive rights of way (footpaths)** in the area. If, like me, you take advantage of the wonderful countryside around Wansford this is a topic you may find very helpful. Which footpaths are public rights of way? Which are concessionary paths (you can use but may have conditions of use imposed by the landowner)? How do the two types of footpath interact? This will be a very informative talk and all members of the public are welcome to attend.

**Cllr Quentin Bambridge**

## SIBSON-CUM-STIBBINGTON PARISH COUNCIL

The Parish Council met at The Christie Hall on Thursday 7th July 2022 – 6 Councillors, Parish Clerk and 6 members of the public were in attendance. Details were included in last month's edition of Living Villages Magazine.

**Next meeting** scheduled for Thursday 1st September 2022 in the Christie Hall commencing at 7 p.m.

## THORNHAUGH PARISH COUNCIL

A meeting of Thornhaugh Parish Council took place on 21st March 2022 in St Andrew's Church. It was chaired by Chris Smith and present were Ashleigh Kewney, Martin Lewis, Louise Molesworth and Adrian Rodgers, also present were two members of the public, Mike Horne, John Clare Countryside Project and Deirdre McCumiskey, Parish Clerk.

There were no apologies for absence.

Mike Horne, of the John Clare Countryside Project briefed the Parish Councillors on the aims of the project:-deliver significant increases in key wildlife habitats, particularly those of limestone grassland, wetland and arable farmland; raise levels of local pride, aspiration and community cohesion by helping local communities to understand, appreciate and enjoy their local natural and built heritage; pilot and champion best practice sustainable development in all aspects of future development within the area including sustainable techniques of land management both on and off the existing nature reserves; promote public health and wellbeing, providing large areas of accessible green open space for the people of Peterborough and create new jobs and economic opportunities within the area, allied to the delivery of these objectives, particularly in tourism, visitor attractions and farming and nature conservation. Hannah Joyce has volunteered to work/liaise with the project and carried out a walk around the village with Mike Horne. It is hoped to establish small nature recovery groups within each parish.

### **Police Matters**

There were no police representatives present. No-one was aware of any recently reported crimes.

### **Defibrillator**

Louise Molesworth stated that she had believed that training was going to be provided free-of-charge (as part of the cost of purchasing of the defibrillator), but it appears that there will be a charge. She will check this out before finalising the training.

### **Footpaths**

The Chairman had no update from Lindsey Freeman. Lindsey is seeking volunteers and obtaining landowner details.

### **Queen's Platinum Jubilee Event**

Louise Molesworth stated that two planning meetings had taken place and the event will take the form of a 1950s Afternoon Tea which will be held on Sunday 4th June 2022. The Sharpley's have kindly agreed for it to take place on their land. There are plans for a quiz, presents for the children, a memorial book and the planting of a tree. The church will be open during the afternoon. Residents will be asked to bring along a contribution of food for the buffet. It was agreed to set a maximum budget of £1,000 (from the Community Infrastructure Levy Grant).

### **Memorial for Hubert Warren**

Lousie Molesworth stated that Hubert Warren's family were delighted at the idea of a memorial to be installed in the village. One idea is to install a bench on the bend by the chicken farm on Russell Hill and a lectern with a map of the footpaths sited next to it. It was agreed to set a maximum budget of £1,0000 (from the Community Infrastructure Levy Grant).

### **Open Reach**

The Chairman stated that a complaint had been lodged and the necessary repair work has been completed at the village triangle. A request has been made that Open Reach inform the residents in advance of any future work being carried out.

### **Parish Council Elections 2022**

The Clerk had circulated the Nomination Papers which have to be hand delivered by 4.00 pm on 5th April 2022 to Peterborough City Council. The Clerk is willing to take them to Peterborough City Council on 30th March so she will need to have them back by 29th March 2022. Peterborough City Council will provide a Notice of the Election for the noticeboards.

### **Passing Places on Russell Hill**

The Chairman stated that she had not yet had a response from Peterborough City Council.

### **Annual Donations**

It was agreed to donate £190 to Thornhaugh & Wansford PCC and £100 to Living Villages.

### **CAPALC Affiliation**

It was agreed not to pay this affiliation fee as the Parish Council has not needed to use the services available from CAPALC in recent years.

### **Planning Applications**

21/01225 - Construction of a first-floor loft conversion above an existing garage at St Medard House, Russell Hill, Thornhaugh – Awaiting decision; 21/01894 - Single storey front extension at 13 Meadow Lane, Thornhaugh – Permitted; 21/01991 - Proposed alterations to existing Outbuildings including external domestic spiral stairs to allow access from home office to garden area at Home Farm House, Leicester Road Thornhaugh – Awaiting Decision and 22/00052 – First floor side extension at 5 Russell Hill, Thornhaugh – Permitted

### **Hanging Baskets**

The hanging baskets brackets have been removed as requested by Open Reach. Thanks were expressed to Adrian Rodgers for doing this. The possibility of putting up poles for the hanging baskets was discussed but it was felt that this would be too expensive. Alternatives to be able to retain floral displays need to be finalised.

### **Reinstatement of the Garden Waste Bin Collection**

The Chairman sent a further e-mail on 20th March 2022 asking when the reinstatement of the Garden Waste Bin Collection is likely to happen (no reply to date).

### **Village Matters**

It was noted that Nikki Higgins undertakes the Litter Picks with Wansford (not Wittering) residents. Thanks were expressed to Liam Higgins for cleaning the lectern.

### **Next Meeting**

The Annual Parish Meeting followed by the Annual General Meeting of Thornhaugh Parish Council will take place at 7.00 pm on 16th May 2022 in St Andrew's Church.

## Wansford Horticultural & Craft Society

*Our Events are up and running*

On 24-25th September 2022, we have arranged an overnight trip to the brand new **RHS garden at Bridgewater near Manchester**. The trip is available to members and friends of the Wansford Horticultural Society. We have a few spaces available, therefore if you have a yearning to see the lovely gardens you would be very welcome. The cost is £160 (single) and £235 (couple) and includes travel, Novotel Hotel, Dinner & breakfast, entrance to RHS Bridgewater & NT Clumber Park. We leave at 0830 on Saturday and return 1830 on Sunday. Please contact Quentin Arnold ([qarnold@eastofengland.org.uk](mailto:qarnold@eastofengland.org.uk)) or [myself@garypunter@aol.com](mailto:myself@garypunter@aol.com) for details.



## PETER RIDDINGTON LANDSCAPING

We supply and install Patios & Pathways, Decking, Stone Walls and Fencing, We plant Trees, Shrubs Hedges and Flowers, and offer a complete Garden Maintenance and Improvement Service. Garden design service provided  
Contact Peter Riddington today for a free quotation

4 LOCKS GREEN, YARWELL, PETERBOROUGH PE8 6PY  
Telephone: 01780 783004 Mobile: 07860 962068  
Email: [peter@peterriddington.co.uk](mailto:peter@peterriddington.co.uk)





# Georgina's

Curtains & Keepsakes

Beautiful curtains, blinds and soft furnishings  
designed and created to compliment your  
home.

For a free home consultation  
and quote call 07957686595

[www.georginascurlainsandkeepsakes.com](http://www.georginascurlainsandkeepsakes.com)



## MOBILE HAIRDRESSING

Ladies & gents hairdresser with over  
30 years experience.



If you are housebound, have reduced  
mobility, no transport or simply prefer the  
convenience of having your hair done at  
home, I have daytime appointments  
available. Fully insured. Competitive prices.

Please call Tracey on 01780 782467

## THE CHRISTIE HALL

Elton Road, Wansford  
(registered charity no 1033998)

A well-equipped hall  
with large kitchen and parking.  
**Available for parties, receptions,  
meetings, activity groups  
and most types of private functions**

For more information and details on how to book  
visit our website

[www.christiehall.co.uk](http://www.christiehall.co.uk)

**THE CARRIAGE**  
Exclusive Fitness Club  
**JOIN NOW**

**1-2-1 Personal Training sessions  
and Group Workouts, in a stunning  
& unique environment.**

Wittering Grange, Wansford, Peterborough, PE8 8NR  
07508 878121  
[www.thecarriagefitness.co.uk](http://www.thecarriagefitness.co.uk)



Registered  
Business



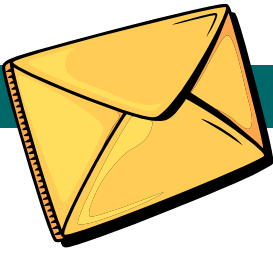
**jc heating**  
SERVICES

Oil boiler servicing and  
repairs, heating controls,  
hot water service and repairs.

Your local heating expert for  
over 15 years.

Jo Childs,  
8 Black Swan Spinney,  
Wansford.

**Mob : 07729036942**



## LETTERS TO THE EDITOR

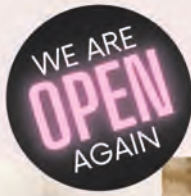
email [craig@ascotgraphics.co.uk](mailto:craig@ascotgraphics.co.uk)

Dear Craig,

Apologies for the quality of the attached photo.

Not many people travel all the way from New Zealand to Water Newton's St Remigius Church but these two did. They were researching their family history and "Original Jackson Efq" in particular. The photo shows them looking at Original's memorial stone inside the church. Original "departed this life the 10th of May 1771 aged 74 years". The name Original may have derived from Reginald or it could have been used to indicate the first-born son of the family. He was a land owner in this area.

Don Hutchinson, Water Newton.



*polished*  
NAILS & BEAUTY



Award winning nail and beauty professional, providing luxurious treatments from a relaxed setting

#### TREATMENTS AVAILABLE


- Manicures & pedicures
- Gel polish
- Footlogix medi-pedi
- Nail rehabilitation
- Bespoke nail art
- Nail extensions
- Eyelash extensions
- Facial waxing
- Tinting
- LVL (lash lift & tint)
- IBX nail strengthening & repairing



phone 07811 057715

email [hello@polished-nailsandbeauty.co.uk](mailto:hello@polished-nailsandbeauty.co.uk)

website [www.polished-nailsandbeauty.co.uk](http://www.polished-nailsandbeauty.co.uk)

Find us on  Facebook @polishednailsandbeautyuk

THE HAYCOCK MANOR HOTEL, WANSFORD, PETERBOROUGH, PE8 6JA



# Just ask

Making the right decisions can be stressful at the best of times, but we are here to help. Whatever's on your mind, just ask.

**TOBIAS COLTON** BA(Hons) DipPFS  
Principal  
**TOBIAS COLTON WEALTH MANAGEMENT**  
Associate Partner Practice of St. James's Place Wealth Management  
07468 428 380  
tobias.colton@sjpp.co.uk  
www.tobiascoltonwealthmanagement.co.uk



The Partner Practice is an Appointed Representative of and represents only St. James's Place Wealth Management plc (which is authorised and regulated by the Financial Conduct Authority) for the purpose of advising solely on the group's wealth management products and services, more details of which are set out on the group's website [www.sjpp.co.uk/products](http://www.sjpp.co.uk/products).  
The 'St. James's Place Partnership' and the titles 'Partner' and 'Partner Practice' are marketing terms used to describe St. James's Place representatives.

SJPP2026 V1 (04/20)



## HOW WE ARE DIFFERENT?

US	Confirm your budget	Explain the house buying process	Find the perfect house	Save you as much money as possible	Search the whole market for the right mortgage	Deal with solicitors paperwork	Take care of all your protection needs	Be there every step of the way
OTHERS								

## Our team are happy to help

**EARN £50**

**REFER A FRIEND:**  
Every time you refer friends or family to see us, benefit from our £50 'Refer a Friend' scheme when they complete!

\*Terms & conditions apply.



KATE



LAURA



HAYLEY

# THERE FOR YOU EVERY STEP OF THE WAY

01205 631330 [kate@homemortgagesolutions.uk](mailto:kate@homemortgagesolutions.uk) [www.homemortgagesolutions.uk](http://www.homemortgagesolutions.uk)

\*Your home may be repossessed if you do not keep up repayments on your mortgage



## FENLAND DISTRICT BROKERS LTD

Your business needs protection at so many levels.

We can advise on full Insurance Coverage.  
Local, reliable and experienced.



**FOR ALL YOUR BUSINESS INSURANCE NEEDS**

0808 175 3050 | 22 Cecil Road, Peterborough | [www.fdbltd.co.uk](http://www.fdbltd.co.uk)

Fenland District Brokers Ltd are an Appointed Representative of Ten Insurance Service Ltd which is authorised and regulated by Financial Conduct Authority.

## Suk's Sensations

**Learn to cook delicious authentic Indian curries  
using fresh ingredients and real Indian spices**

“Hi, I’m Suk and I will be providing 2 hour demonstration sessions at my home in Sutton for small groups focussing on different recipes in each session. It will be good opportunity to learn new skills and meet new people in a relaxed informal atmosphere. Refreshments will be provided. I will be happy to include any special requests and favourite recipes I will provide a small takeaway box for each person after each session and refreshments will also be included during each session”

**Impress your family and friends with your own home cooked curries!**

Please call Suk on **07778 517045** for bookings and further enquires



## An Open Day for those interested in Freemasonry

On **Saturday 17th September**, Peterborough Masonic Centre in Ellindon will open its doors to the general public so that they can discover a little more about Freemasonry. The Open Day will run from 11am to 3pm.

**What is Freemasonry?** With a membership of more than 200,000 people drawn from communities across the UK, Freemasonry brings people together irrespective of their race, religion or any other perceived differences that can divide us as a society.

It is one of the oldest social organisations in the world, Freemasonry is not defined by an ideology. It's open to people from all religions and political persuasions, and provides the common foundation for friendships between members, many of which will last for life. Rather than working on buildings like the masons of old, today's Freemasons focus on building themselves as people of integrity.

**What are its guiding principles?** Freemasons use four important guiding principles to help define their path through life: integrity, friendship, respect and charity. Kindness and charitable giving are deeply ingrained within the principles of Freemasonry. It provides a support structure that helps members make positive contributions to communities and worthwhile causes through fundraising events or volunteer work. For example, local Freemasons have been heavily involved with Three Pillars Feeding The Homeless Trust as well as Deaf Blind UK, Nene Valley Care Trust and Peterborough Cathedral.

If you would like to find out a little more about Freemasonry then please contact the people indicated in our advertisement on this page or e-mail [pmo@northants-huntsmasons.org.uk](mailto:pmo@northants-huntsmasons.org.uk) or visit [www.northants-huntsmasons.org.uk](http://www.northants-huntsmasons.org.uk)



Building New Friendships



## Discover Freemasonry Open Day



Friendship Integrity Respect Charity



Building New Friendships



Eager To Give Back



Building Confidence



Tradition & Heritage

**Saturday 17th September 2022**

**11am to 3pm**

**Ellindon Masonic Centre,**

**127 Ellindon, Bretton, Peterborough PE3 8RD**

**If you would like to know more and are unable to attend  
please e-mail: [pmo@northants-huntsmasons.org.uk](mailto:pmo@northants-huntsmasons.org.uk)**

# DIRECTORY OF CONTACTS

## For all enquiries, contributions and adverts

<b>Craig Bunday</b>	craig@ascotgraphics.co.uk	07771 538661
<b>Ascot accounts</b>	accounts@ascotgraphics.co.uk	01487 801301

## Parish Councils

Sutton	Deirdre McCumiskey (Clerk)	01780 782668
Wansford	Marie Lewis (Clerk)	07899 732049
Sibson-cum-Stibbington	Wendy Gray (Clerk)	01778 441312
Thornhaugh	Deirdre McCumiskey (Clerk)	01780 782668
Water Newton (Parish Meeting)	Caroline Nathan (Chairman)	07989 362514

**City Councillor ( Wittering Ward) - Gavin Elsey** **07738930599**

## Churches

<b>Ministers:</b> Thornhaugh & Wansford		01780 782271
Stibbington, Sutton, Castor & Water Newton		01733 380900
	<a href="mailto:admin.castor@btconnect.com">admin.castor@btconnect.com</a>	

## Churchwardens:

St Andrew's Thornhaugh:	Stuart Foreman	01780 783220
	Liz Kemp	01780 782333
St Mary's Wansford:	Caroline Ashley	01780 782408
	Alan Jones	01780 783205
St John the Baptist, Stibbington	Charlotte Bradshaw	01780 781805

## Friends:

St Mary's & St Andrew's	Caroline Ashley	01780 782408
St Remigius Water Newton	Tony Capon	01733 237500

## Other useful contacts

Neighbourhood Policing 101	P'boro City Council	01733 747474
Wansford Surgery	Royal British Legion	01780 782200
(Out of hours	Stibbington & Wansford WI .	.781733
111 option 4)		
Wansford Pharmacy	Cricket Club	07860 278800
Communicare	Horticultural Society	01780 592514
H'don District Council	Stibbington Centre	01780 782386

## Website [www.livingvillagesmagazine.co.uk](http://www.livingvillagesmagazine.co.uk)

©2022 Living Villages Magazine The contents of this magazine may not be copied, reproduced, distributed, republished, downloaded, displayed, posted or transmitted in any form or by any means without the prior written permission of Living Villages Magazine. You may not distribute, display or copy any of the contents of the pages contained in this magazine to third parties without the prior written permission of Living Villages Magazine. All images shown in this magazine are the property of Living Villages Magazine unless otherwise accredited to another. Images may not be used without the prior written permission of Living Villages Magazine or the accredited owner. Unless otherwise specified, the authors of the literary and artistic works in the pages in this magazine have asserted their moral right pursuant to Section 77 of the Copyright Designs and Patents Act 1988 to be identified as the author of those works. If permission is sort and given, it is expected that all articles/images be accredited to either Living Villages Magazine or the author of said articles/images. The views expressed in articles published are strictly those of the writer, and not of Living Villages. Living Villages cannot vouch for products and services advertised, nor accept any liability resulting from the purchasing of product services, although care is taken to ensure their suitability.

## NEED A LOCAL PLUMBER?

**PlumbCall** Plumbing & heating  
Same day / next day service!

- Gas, Electric, Oil, LPG & Solar
- Central heating: Full design & installation
- High efficiency boilers
- Boiler / combi replacements
- Central heating, boiler breakdown & plumbing aftercare
- Underfloor heating specialist
- Power flushing
- Landlord certificates
- Free estimating service
- Annual servicing
- All work guaranteed
- OFTEC Registered

**12 year manufacturer's guarantee on selected boilers**  
(Terms & Conditions apply)

**CALL US TODAY!**

**01733 243 047**

**or 07860 257 803**

E: [advice@plumb-call.co.uk](mailto:advice@plumb-call.co.uk)

W: [www.plumb-call.co.uk](http://www.plumb-call.co.uk)

Gas Safe Register No.8494  
LPG Registered



\*subject to acceptance terms and conditions apply



*“Achieving the best price for our clients is our highest priority”*

- Local
- Professional
- Experienced *Estate Agents*



[www.nortonrickett.co.uk](http://www.nortonrickett.co.uk)

**01780 782 999**



# Crown

## Property Services

- 👑 Electrical & Plumbing
- 👑 Kitchens & Bathrooms
- 👑 Renovations
- 👑 Extensions
- 👑 Windows & Doors
- 👑 Groundworks
- 👑 Landscaping
- 👑 Internal Refurbishment

Old Sulehay Cottages, Sulehay Road, Wansford, PE8 6PA

### 07766 168659

jonathon@hibbins.me

# Village Pizzas

Open Tue – Sat for  
Collection / Eat-In at  
Leedsgate Farm  
4.30pm – 10pm  
Or

Delivery 6pm till 10pm

## 01780

## 784587

View our Menu at  
[www.villagepizzas.co.uk](http://www.villagepizzas.co.uk)



Mat based Pilates and Chairotics  
Classes for all levels

## MAT BASED PILATES

1 hr classes

Online on Zoom, or in person at  
Christie Village Hall (Wansford) and Harringworth Village Hall

Monday, Tuesday, Wednesday and Thursday  
£3.50 online / £6 in person



Ease back pain  
Strengthen your core, abs and back  
Improve sports performance  
Exercise without joint pain  
Increase your flexibility  
Boost brain power and focus

Christie Village Hall:  
18:00 Monday /  
12:30 Wednesday / 18:00 Thursday  
Online:  
16:45 Monday / 11:30 Thursday  
11:00 & 12:30 Tuesday

Justine Bromage  
Fully Qualified Level 3 Pilates Instructor  
Level 3 Personal Trainer  
RSA to Music Instructor

*Justine*  
BROMAGE FITNESS

[justwhim@hotmail.com](mailto:justwhim@hotmail.com)

07919 106156

## Barnlogs

Kiln Dried Hardwood

### KILN DRIED HARDWOOD LOGS

Prices from £115 per  
loose cubic metre

Certified 'Ready to Burn'  
Bagged or loose loads  
Sustainably sourced  
local hardwood  
Ultimate clean burn  
with maximum heat output  
Kindling &  
firelighters available

FREE LOCAL DELIVERY

**£5 OFF** with code  
LIVINGVILLAGES-5

**ORDER ONLINE:** [www.barnlogs.co.uk](http://www.barnlogs.co.uk)

01780 784055 / 07734 439292 [sales@barnlogs.co.uk](mailto:sales@barnlogs.co.uk)

**SAVE  
MONEY  
ON YOUR  
ENERGY  
BILLS**

