

Living Villages

*Water Newton Thornhaugh
Stibbington Sutton Wansford*



November 2022

Why should you invest and Act now to safeguard your assets against the ravages of inflation.

HERE ARE THREE REASONS:

- 1 The price of goods are becoming more expensive daily and the interest rates offered by banks and building societies do a poor job of maintaining real value, let alone provide some element of growth to cover even a portion of the our daily purchases.

This means, if you leave all your life savings in poorly performing accounts or investments, the value of it, is actually falling year after year and you are by default becoming poorer. This is not a great long-term solution to enjoy a retirement without some element of financial worry.

- 2 **Your money can really multiply in the long run**

Investing gives your money the best chance of growing.

For example, let's assume you invested £100,000: 1% over 5 years provides a pot of £105,100; In comparison with 5% annual growth the equivalent funds would be worth £127,630.

Due to the impact of inflation eroding the spending power of the cash in your savings account, in real terms it would be worth even less.

Remember the most important Rule "**interest earns interest**" and so your money grows at a faster rate, which is why it provides a "**snowball effect**" and this gearing protects investments from the ravages of inflation.

- 3 Monies invested tax effectively, via the use of **non cash ISA's** and **UK life assured bonds** means that, you keep more of your hard earned money in your own pocket.

Not only are you wisely protecting against paying HMRC taxes, but you will also benefit from the protections in place, ie to safeguard your own funds for you and your family from major stock market falls and bankruptcy.

Please remember - there are also many types of investments that also provide protections in case of long-term care and inheritance tax, so please make contact today.

**OUR ADVISERS HELP HUNDREDS OF CLIENTS ANNUALLY TO
DO JUST THAT, TO INVEST AND PROTECT WHAT YOU HAVE AND TO PROVIDE A
WORRY-FREE FUTURE.**

Hill Grafford are a Top Rated UK Chartered Financial Adviser for 2020 and 2021 - as distributed in The Times

Speak to one of our Local Chartered Financial Advisers today on

01780 784310 or 07967 015 805

www.hillgraafford.co.uk

A copy of client reviews can be emailed upon request.



Editorial

Dear readers

Can we mention the 'C' Word? With two more editions before Christmas (including this one), are you thinking about the festive season even before the last November Bonfire fizzles out?

The Wansford Church '**We've Got Talent' Christmas Community Event** is gathering pace, some of the performers already booked in include Wansford Community Singers, Fellacapella Harmony Group, The Yorkshire Rapper, Tales from a Lancashire Lass, French Gendarmes, and a magician named Mr T Cooper, but they still want more! Especially younger performers. Details are on page 13.

As well as our regular contributors, we include a mouth watering recipe for Pakoras on page 26, guaranteed to brighten up any winter buffet. Details of The final Autumn talk at St Kyneburgha are on page 27, as well as information of a Winter Concert in December at the Church from the St Peter's Singers. The Augean Community Fund is still available for applicants, details are on page 29.

Please continue to support your local magazine with contributions, letters and articles, they are much appreciated. All our contact details, and those of all your local contacts, plus important numbers, are listed inside the back cover.

Best wishes

Craig

Contents

6	Worship & Benefices
10	Stibbington and Wansford W.I.
16	Parish Council Notices and Minutes
22	Letters
23	Wansford Horticultural & Craft Society
30	Contacts

Studying for a course?- Did you know you can apply for a grant?

Since the early 1990s the **Reverend Thomas Woolsey's Charity** has been giving for equipment to all students from Thornhaugh and Wansford for further education, apprenticeship or skills.

The Trustees of the charity will be meeting in September to allocate the grants, so there is plenty of time for any student to apply. Go to the website **thewoolseycharity.co.uk** to for more information and complete the application form.

Lisa Chambers, Secretary, Rev. Thomas Woolsey's Charity

WANSFORD COMMUNITY HALL

Peterborough Road, Wansford

This hall accommodates parties of up to 36 people seated. Ideal for Meetings, Workshops, Aerobics etc

GREAT VALUE AT ONLY £4 per hour
FOR BOOKINGS TELEPHONE
John Stannage 07879 485330

Capitol Lettours



Your local property agent
With over 30 years of
experience
Relocation, Lettings and Sales

Please call our office for a
competitive quote

Peterborough - 01733 553366

(enquiries@capitollettours.com)

www.capitollettours.com

BARKLEYS GARDEN SERVICES

Grass cutting, weeding,
hedge trimming

Lady gardener
available

Bev & Peter
Ailsworth
(01733) 380480
07593721144

beverleybarkley1@gmail.com



GRIFFIN

Solid Fuel Merchant
Supplier of Pre Packs

Coal Bunkers Charcoal Compost
Flo Gas Logs & Sticks Salt

Coal Yard
Station Road
Nassington
01780 782540

Office
12 Church Hill
Castor
01733 380470



Dry carpet cleaning and upholstery
cleaning services in Peterborough and
the surrounding areas.

Whether you have an individual chair or
carpet in a domestic property, or are
interested in contract carpet cleaning in
your business, you can benefit from our
35 years experience.

Telephone: 01832 280429

Mobile: 07951 124374

Email: info@bcnmulticlean.co.uk

Ladies

Would you
like to sing?

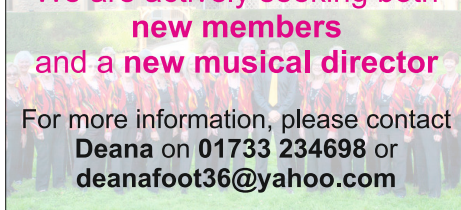


is a ladies four-part
harmony chorus,
based in Orton Wistow,
Peterborough.

We rehearse on Tuesday evenings
from 7.30 - 9.30pm

We are actively seeking both
new members
and a new musical director

For more information, please contact
Deana on 01733 234698 or
deanafoot36@yahoo.com



NEED A RECOMMENDATION?

The **ONLY** Police Checked
recommended register of
local approved traders



FREE and **EASY** service

safelocaltrades.com

Recommended & Approved



Much more than just a recommendation ...

Serving the PE Postcode community since 2008

Over 70 different trade categories and over 17,000 reviews

Here are some of our members ...

New Garage Door & Repairs



**GARAGE DOOR &
SHUTTER SERVICES**

www.garagedoorandshutterservices.co.uk

Call Dave on

07709 337647

Electrician

**OLD COURT
ELECTRICAL**

www.oldcourtelectrical.co.uk

Call David on

07973 507420

Driveways & Patios



www.cambridgeshiredriveways.com

Call us on

01733 810063

Building & Carpentry Services



Steve Deprez & Son
Building • Brickwork • Carpentry

Preserving the past. Building the future

stevedeprezbuilders@gmail.com

Call Steve on

07414 292188

**Garden Makeovers
& Hard Landscaping**

**STYLE
HOME IMPROVEMENTS LTD**

www.styleimprovements.com

Call Tony on

07879 881315

Carpet & Upholstery Cleaning

**STAINBUSTERS
CARPET CLEANERS PETERBOROUGH**

www.peterborough-carpetcleaners.co.uk

Call Steve on

07818 058490

Plumber (Heating & Gas)



**Willow
SERVICES**

www.willowservices.co.uk

Call James on

01733 590501

Double Glazing Repairs



www.nenevalleyupvcrepairs.co.uk

Call Andrew on

01733 795204

Gutter Cleaning & Repairs



www.guttercleancompany.com

Call Jeremy on

0800 179 9363

To see our full list of members and read all reviews just go to ...



www.safelocaltrades.com



0800 014 1832



The safest way to source local traders



Tear out page and keep



WORSHIP DATES

Every Sunday 5.00pm - Zoom 'At Home' Service. Log in and phone details from Rev. Jane jdailby@aol.com 01780 782271

St. Leonard's, Apethorpe

6 th	11.00 a.m.	Holy Communion BCP
13 th	10.55 a.m.	Remembrance Sunday Service
20 th	11.00 a.m.	Holy Communion

St. Mary's and All Saints, Nassington

Every Thursday 9.30 a.m. Holy Communion BCP		
6 th	8.15 a.m.	Holy Communion BCP
	9.30 a.m.	All Age Communion
13 th	10.55 a.m.	Remembrance Sunday Service
20 th	9.30 a.m.	Holy Communion
27 th	9.30 a.m.	Family Service and Crafts

St. Andrew's, Thornhaugh

6 th	9.30 a.m.	Act of Remembrance and Holy Communion
20 th	9.30 a.m.	Holy Communion

St. Mary's, Wansford

Every Wednesday 10.00 a.m. Morning Prayer		
13 th	10.55 a.m.	Remembrance Sunday Service
27 th	9.30 a.m.	Holy Communion

St. Mary's, Woodnewton

6 th	9.30 a.m.	Holy Communion
13 th	10.55 a.m.	Remembrance Sunday Service
20 th	9.30 a.m.	Holy Communion
27 th	8.30 a.m.	Holy Communion BCP

St. Mary Magdalene's, Yarwell

13 th	3.00 p.m.	Remembrance Sunday Service
16 th	3.00 p.m.	Methodist Service
27 th	11.00 a.m.	Holy Communion

CASTOR BENEFICE

We are still maintaining the following service pattern every Sunday in each of our **Parish churches** until further notice.

Marholm 9.00am - Holy Communion (Morning Prayer on 4th Sunday)

Castor 8.00am Holy Communion (said service) 10.15am - Sung Eucharist

Sutton 9.00am on 4th Sunday of the month - Holy Communion

Every **Wednesday** morning at **10am** there is a service of Holy Communion at **Castor**.

We still continue to celebrate **Evensong via Zoom at 6pm every Sunday**, if you wish to join us please contact the Benefice office for the Zoom link and access code.

admin.castor@btconnect.com

The next service at St. John the Baptist, Stibbington the **Carol Service on Sunday 11 December 2022 at 6.00pm**, please see separate poster, do come along, you will be assured of a very warm welcome, mulled wine will be served on arrival and mince pies afterwards.

David Ridgeway

ST. JOHN THE BAPTIST STIBBINGTON

CAROL SERVICE



SUNDAY 11th December
6.00 pm

Do come and join us, you will be assured of a very warm welcome, mulled wine will be served on arrival

REFLECTIONS

As we move into November the clocks will have changed and the days become noticeably shorter. I often think of November as our "remembering time" with All Saints and All Souls Days in our

churches and Remembrance Sunday the following week. However, there is also a sense of light and darkness through this season. Much is made these days of Hallowe'en with its ghosties and ghoulies. Sometimes this is taken to unpleasant, maybe even dangerous extremes, but personally I don't think there is much harm in children having a bit of fun with Hallowe'en, so long as we get the rest of the story, which is that after a time of darkness the light returns. We see that every day as the sun rises, driving away the shades of night. After an evening of fun, the children wake to the light of a new, normal day; the ghoulies are gone and everything is OK after all – the light is stronger than the darkness.

There are times of darkness in all our lives, and in the life of the world; we don't need to look too far for that at the moment, and it may be that you are experiencing a personal darkness at the moment. These are times to hold on to the hope and promise of light after the darkness, and that light is more powerful than the darkness. As we recall this month those we have loved who now rest in God's eternal care and face the grief that can bring, or reflect upon the devastation of war at Remembrance- tide there might be times when we feel that the darkness will engulf us. These are the times to remember the power of the light over the darkness. Remembering can bring light as we remember those we love and their example, the signs of hope and commitment at a Remembrance Service and the promises of a new day dawning.

This is, of course, the heart of the Christian message; that light will overcome the darkness, that nothing can overcome the Light of the World, Jesus Christ. As we move on past All Souls (along with Hallowe'en which actually means the day before All Saints Day remembering the light of the saints) and the mixed emotions of Remembrance, we draw close to church's season of Advent looking towards Christmas when we will read again those words from St. John's Gospel: The light shines in the darkness, and the darkness did not overcome it. (John 1, verse 5) We will begin lighting our Advent candles at the end of November praying that light of Christ will dawn in our hearts once again.

Perhaps, though, through these dark months of winter, as well as looking to light dawning again, we also need to note the words of the that verse from St. John's Gospel, that light shines IN the darkness. Yes, the light will overcome the dark, but there is also light IN the darkness, too. That light comes from waiting in hope and standing firm, in the company and comfort of friends and family, in a hand to hold to in the darkness, and an awareness of God's love that is always with us, lighting our way.

May there be much light for you through these darker months and may we be encouraged to look to the light to come, and find hope in the present moment.

With every blessing,

Rev. Jane

The Friends of St Mary's and St Andrew's

By the time you read this, we will have had our Harvest Lunch in St Mary's church on 26 th October. This year we are supporting Peterborough soup kitchen, and have already had an amazing amount of donated food and clothing items.

We are hoping to continue a monthly Coffee Stop through the winter as we did last year, and the next one will be Wednesday 9th November at 10.30 after Morning Prayer.

Caroline Ashley



Your friendly, reliable and honest local heating experts

- | | |
|------------------------|-------|
| ✓ Boiler repairs | ✓ Gas |
| ✓ Emergency callouts | ✓ Oil |
| ✓ Boiler installations | ✓ LPG |

www.fixfirstheating.co.uk

Call Chris Welch on 01733 315065/07856 518842
or email chris@fixfirstheating.co.uk



New Luxury Care Home



Castor Lodge Care Home

At Castor Lodge, our care is the kind we would want all of our loved ones to receive. Offering residential and dementia care, our dedicated team make life comfortable and enjoyable for all our residents, allowing them to live safely and as they choose. Our brand new home is luxurious and beautifully furnished, whilst retaining a warm family atmosphere that makes Castor Lodge feel extra special.

- 68 Spacious en-suite bedrooms
- 6 Premium self-contained suites
- Bistro Café and themed pub
- Sociable lounge and dining areas
- Roof terrace and landscaped gardens
- Hair and pamper salon
- Daily fine dining
- Tailored meaningful activities

To find out more about life at Castor Lodge contact our Customer Relations Manager Laura Mills on 07725 799 217 or email laura.mills@countrycourtcare.com



01733 823163



Splash Lane, Castor, Peterborough, PE5 7BD



www.countrycourtcare.com



THE ARTS SOCIETY PETERBOROUGH

The Arts Society is a leading arts education organisation that brings people together through a shared curiosity for the arts. Each year The Arts Society Peterborough (TASP) holds nine illustrated talks given by experts in their field on subjects ranging widely, including old Masters, modern sculpture, silver jewellery, the work of David Hockney and music in art. The talks are held at

The Fleet in Fletton Peterborough on the second Thursday of each month except June, July and August. The talks start at 10.45 am but you are welcome to come earlier and meet like-minded people for a chat over a cup of coffee. Non-members are always welcome and the first talk is free, so come and join us!

In addition to the live talks, annual members also receive other benefits. If you wish to find out more about our Society or about becoming a member, please visit our website, www.the-arts-society-peterborough.org.uk Our next two talks are:.

10th November 2022

The Fascination of Jewellery: Important Women's Collections, by Clare Blatherwick.

A richly illustrated talk looking at the collections of four very different women, their approaches and reasons behind their collections.

8th December 2022

Is Christmas in Good Taste? By David Phillips.

In a light-hearted historical view we discover some wonderful and some gloriously awful Christmas imagery.

PIANO LESSONS IN PETERBOROUGH

Ann Burden ALCM PGCert BSC(Hons)

Please contact annburden684@msn.com or ring 07702363337

QUALIFIED EXPERIENCED TEACHER

No experience is necessary. I can teach you to play for pleasure or towards an exam; I currently work for the London College of Music. Lessons are tailored to your requirements.

If you would like to take up a new hobby or rekindle an old one I would love to hear from you. I am happy to take children from the age of three upwards and there is no age ceiling.

I teach a wide range of instruments primarily piano, keyboard, guitar, violin, clarinet and saxophone. Other instruments are also available so please feel free to contact me with requests. I also teach music theory.

****Online classes also available****



STIBBINGTON & WANSFORD WI

Today's women working for tomorrow's world



After a break of two years, we were very happy to hold our annual coffee morning on Saturday 8th October, in aid of Macmillan Coffee morning. Once the date was agreed, the bakers within our group got busy producing a wonderful spread of sweet and savoury treats. Thanks to all those busy bakers. Also many thanks go to all those that came along and supported the coffee

morning at St Mary's Church, buying up all the cakes, and raising a wonderful £147, a big thank you again to all those involved in this event.

October's monthly meeting took place at Peterborough Cathedral, participating in the 'Highlights' tour. Members were guided by Brian, a very amusing and knowledgeable volunteer guide. He was able to give a brief history from 7th Century when the Cathedral was an abbey to present day. He then went on to take us on a tour around the Cathedral, picking out Old Scarlet, the grave diggers, the fabulous painted ceiling. As well as the burial places of two Queens – Katherine of Aragon, and Mary, Queen of Scots. Although Katherine's tomb is still at the Cathedral, Mary was moved to Westminster Abbey, where she still rests. A very enjoyable afternoon had by all, being accompanied by a guide meant that we all found out something new, definitely worth you checking out this tour out.



Now that we are meeting in St Mary's Church visitors are most welcome to our monthly meetings to hear our visiting speakers. Please see below for our upcoming events:

Tuesday 1st November, 2-4pm Coffee & Craft club, at St Mary's Church.

Tuesday 8th November, 7pm W.I. meeting St Mary's church. AGM and craft evening

Tuesday 15th November, 2-4pm Coffee & Craft club, at St Mary's Church.

Thursday 24th November, 7.30pm Book Club meeting, at The Cross Keys Wansford

Both the Coffee & Craft club, and Book Club are open to all, not just for WI members only, and we look forward to others joining us.

Rhona Punter

01780 592514

PAWS AND CLAWS



Boarding Cattery

"Cats have a 'tail' to tell when they've 'paws'd' awhile at Wansford's 5 Star Purr Palace"

Tel 01780 782174

e-mail

pawsandclaws@hotmail.com

Working with Peterborough Cat Rescue to rehome cats and kittens seeking loving homes and laps on which to purr

Peterborough City Council & Rutland County Council
Licence Number: 078015

Woodland Timber Products

Fencing, Play Houses, Gates

Pet Housing, Sheds



01780

783983



Unit 4, Leedsgate Farm Business Park.
Kings Cliffe Road. Wansford PE8 6NX.
07748 787360

woodlandtimber.products@yahoo.com

Local Housekeeper / Cleaning Lady

Long term customer references ✓

Exceptionally high standards ✓

DBS registered ✓

Ofsted registered Nanny / Housekeeper ✓

Telephone: 07741 468392



Nail Surgery * Corns, Calluses, Hard Skin * Cracked Heels

Biomechanics & Orthotics * Diabetic Foot Care * Verrucae

Cryoaesthetics for Skin Lesions * Podiatric Instruction

Ear Ache?

Hearing Loss?

Please Use Our New Phone Number
01780 782200

Ear Wax!

Selective Ear Wax Microsuction and
Hearing Screening Now Available

**Now
Accepting
New
Patients!**

Sue Arnold BSc(Hons) MRCPod & Associates
19 Elton Road, Wansford, PE8 6JD
wansfordinstep@gmail.com

01780 782200

Home Visits Available



OVER 50 YEARS EXPERIENCE

Car buying as it should be; simplistic, with no admin fees, no pressure and a wealth of knowledge to help you find your dream car.

Great part exchange prices given

Finance from as low as 6.9%

www.heartysofpeterborough.co.uk

01733 560605

sales@heartysofpeterborough.co.uk



HEARTYS
of Peterborough



WE'VE GOT TALENT!

Wansford Church Village Christmas Event

**Friday 2nd December at 7.30 pm
in Wansford Church.**

JOIN US FOR A NIGHT OF ENTERTAINMENT AND FUN

We are assembling an amazing cast of local talent to provide a unique evening of varied entertainment for our community

Young people are especially welcome.

There will be a bar serving wine, beer and soft drinks to help provide encouragement to performers and audience.

Admission will be free with all welcome.

However a donation towards the upkeep of the church building would be appreciated.

We still have some spots available for performers, please contact Alan at either
akjones1@btinternet.com or 07720 696 333



Kings Lynn: 01553 761 252
Cambridge: 01223 852 191
Peterborough: 01733 646 111

Credence Law

**Criminal Law
Specialists**

**Motoring
Law**

**Police Interviews
Magistrates Court
Representation**

www.credencelaw.co.uk



Authorised and regulated by
the Solicitor Regulatory Authority
SRA Number 667958



FOOTPATHS

If walking the local
footpaths is something you like
to do would you be interested in joining
like minded people to help monitor
our local rights of way? If interested,
please drop me a line
linfree52@icloud.com
or 07876341514 and I can explain in
more detail.

Thanks in advance

PETER RIDDINGTON LANDSCAPING

We supply and install Patios & Pathways, Decking, Stone Walls and Fencing,
We plant Trees, Shrubs Hedges and Flowers, and offer a complete Garden
Maintenance and Improvement Service. Garden design service provided

Contact Peter Riddington today for a free quotation

4 LOCKS GREEN, YARWELL, PETERBOROUGH PE8 6PY
Telephone: 01780 783004 Mobile: 07860 962068
Email: peter@peterriddington.co.uk



Nene Coppicing and Crafts

Many of you may be familiar with the national nature reserve at Castor Hanglands, between Helpston and Ailsworth, with its varied habitats of ancient woodland, heathland, scrub and ponds. John Clare spoke in his poems of his journeys through Ailsworth heath and the woodlands nearby. You may not realize however that this corner of our area contains the site of a local scheme to restore traditional woodland management utilizing historic skills and practices that were once common across all of our old woodlands.



The local volunteer group **Nene Coppicing and Crafts** has for the past nine years had an agreement with the reserve's managers- Natural England, to restore the ancient practice of hazel coppice rotation in part of the woods. Traditionally the multi-stemmed hazel was grown in dense plots or 'coupes' and then cut down to near ground level every seven or so



years, the coupes being rotated so that each year one coupe was ready to be 'coppiced' or harvested. The hazel rods could then be used for bean poles, stakes and binders for fencing, to make hurdles- the traditional woven fencing panels, or many other products.

At the Hanglands we are now ready to 'coppice' our first coupe which was cleared and re-stocked some eight years ago. Over the next couple of months we plan to cut back the hazel and sort it for use in making products we can then sell. Any waste wood can be then burned in our

charcoal kilns to make high-grade charcoal for sale. All the proceeds from our activities are put back into the group to support our activities.

We can also use the hazel as the raw material for the woodland crafts we are relearning. We can turn the roundwood on a pole-lathe or shape wood with a drawknife on the shave horse—both traditional methods of wood working used by the ‘bodgers’.



Once a coupe has been cleared the sun can reach the woodland floor and the woodland flowers and wildlife which have lain dormant for many years can regenerate in the cleared space. The process of coppicing thus benefits the bio-diversity of the woodland.

Why not come and join us? We meet at the Hanglands every Thursday morning. Although physical work is involved it can be adapted to what most people can manage and there is guidance on how to use the tools.

- Learn about the traditional ways our forbears managed the woodland
- Pick up the skills of working with green wood to make useful products
- Help the woodland to regenerate to improve its natural diversity
- Spend many a happy hour working with a friendly group of like-minded folk and sharing our tea and coffee breaks round the fire!
- Simply enjoy the quietness of the wonderful woodland location

Interested? Go to our website and contact us
www.nenecoppice.org
 or ring Andrew on 07517 150981



WANSFORD PARISH COUNCIL



Wansford Parish Council met on 10th October 2022 with seven Councillors and the Parish Clerk in attendance along with two members of the public.

A declaration of interest was made by Cllr Stevens regarding a planning matter to be discussed in the meeting. A member of the public raised concerns over the traffic monitoring that was being carried out by Highways England (HE) on Peterborough Road just prior to the A1 junction. The Clerk confirmed from previous correspondence that this was gathering data for the A47 duelling project. It was thought the positioning of the monitors may not provide accurate information and WPC agreed to raise this matter with HE and the main contractor in a meeting which was already arranged and which would hopefully ascertain how the data would be used. That meeting would also cover several other points on which WPC were seeking clarification and, thanks to Cllr Clarke, we had a place at the table to press for the best outcome.

The minutes of the previous meeting held on 26th September 2022 were approved, as were all payments.

It was agreed to bring forward an agenda item to discuss the Parish Councillor vacancy and, with a unanimous vote, Jane Taylor-Pitt was co-opted as a Wansford Parish Councillor. Following a short adjournment to finalise documentation, a warm welcome was given by Councillors to Cllr Taylor-Pitt who was able to join the remainder of the meeting.

A retrospective planning application for 8 Robinswood ref 22/01299/HHFUL regarding an additional single story rear extension had no objections.

Some residents may have noticed that the plastic litter bin on the north side of the village green had been replaced with a sustainable and presentable wooden bin which was in keeping with the "villagescape". A further matching bin was planned to replace the plastic one on the south side of the green and both bins would have elegant Wansford plaques fitted in the near future. Thanks were given to Cllr Garner and for his time and skills in making the new bin from recycled materials and at no cost to WPC.

Following the refurbishment of the old telephone box, the next village improvement project was to refurbish the bus shelter on the Old North Road. Peterborough City Council had agreed WPC could carry this out and a budget was agreed for the task. This would be a volunteer-led project with only materials being an expenditure and would cover the refurbishment of the woodwork both inside and out as well as the installation of a new noticeboard for local information.

Councillors also discussed several items on the agenda which required further investigation, knowledge or responses from others, which included:

Vehicular concerns in the village including the increase of traffic when the A1 was closed for roadworks; WPC would press for advance notice of closures so that we had the opportunity to provide feedback which mitigated the impact to the village. There was also discussion on what options may be available to stop heavy goods vehicles crossing Wansford bridge, whether due to road closures or in error, what measures we could take would be investigated as well as ensuring signage was clear and in place. WPC were also pressing to restrict vehicles over 7.5 tonnes from entering the village on the Old Leicester Road. These matters were all on the agenda for a meeting with Peterborough Highway Services and were all pertinent to improving traffic conditions in the village. Some good news from PCC Highways: after continuous pressing by the Parish Clerk, we had a date of Nov 28th to start the resurfacing of the A47 Westbound from the western roundabout to beyond the village boundary which would alleviate the increased noise level from trucks rattling and thundering over the poor road surface.

Electric Vehicle charging points: there was a funding initiative should local areas require on-street charging points for the future growth of Electric Vehicles. A healthy debate took place on this item around whether Wansford Parish Council's area (north of the river) would have any locations or indeed any need in future for on-street charging points or whether south of the river provided more realistic opportunities for this provision. It was agreed to investigate the funding method further and determine what timescales were in place so that full consideration could be made.

The next Ordinary Meeting of the Parish Council would be held on Monday, 14th November 2022 at 7.30pm, and an Extraordinary Finance meeting to be held on the Wednesday, 16th November 2022.

Cllr Graham Stevens

An Environmentally Friendly Bin for Wansford

Dear Lucy,

You wrote to Wansford Parish Council some time ago about the plastic bins in the village. You were 8 years old then and I suspect you are now a bit older but we promised to take some action. You said that we should have wooden bins instead of plastic ones because plastic is not good for our environment. Well, we've made a start on this by installing a new bin made with recycled wood opposite St Mary's Church in Wansford which has been constructed by a man called Graham. We shall make more in the future.



The bin is made of larch wood which has most likely come from the large expanses of forest in Finland. There, larch trees grow very tall and straight and its wood is often used to build houses and make paper for books and newspapers. Finnish forests are managed sustainably so that a new tree is planted each time a tree is felled. You may be interested to know that the forests of Finland are home to an elusive bird called capercaillie which in our country is an endangered species. It looks a bit like a turkey but its feathers are brown and black and it makes a deep clicking noise. The bark on larch trees is very useful for Finland's bears and elks to scratch their backs and Finnish forests are home to chanterelle mushrooms and cloudberry which look like gold-coloured blackberries.

A larch tree is a deciduous conifer because it loses its needles in the autumn and stands to attention with its branches growing downwards. This helps snow to slide off its branches during the very cold Finnish winters where it is often -20c. The fur of rabbits and hares turn white in winter so that they cannot easily be seen in the snow.



I hope that when you pass the larch bin in Wansford you will think of the forest from where it came, its capercaillie, bears, elks, white hares, rabbits, chanterelles and cloudberry and maybe one day you will visit the forests of Finland to see the larch trees and all that live amongst them.

With best wishes,
Yours sincerely,

Marie Lewis
Wansford Parish Clerk

THORNHAUGH PARISH COUNCIL

A meeting of Thornhaugh Parish Council took place on 10th October 2022 in St Andrew's Church. It was chaired by Chris Smith and present were Yana Clipsham, Neil Croft-Taylor, Louise Molesworth, Camilla Plumb and Deirdre McCumiskey, Parish Clerk.

There were apologies for absence from PCC Ward Councillor Gavin Elsey.

Police Matters - there were no police representatives present. It was noted that an old Mercedes Sprinter Van had been sighted in the village apparently collecting unwanted metal. Residents are encouraged to be vigilant if they see any unusual vehicles in the village.

Highways Issues

The Chairman gave an update on the following highways issues:- A47 Road Markings – there is now a sign at the first roundabout (this is a temporary measure until the lines can be repainted) and the markings at the second roundabout have already been repainted; Grass and Hedge Cutting on the A1 at Thornhaugh's Entrance – this has been done but still waiting the re-siting of the bin. We are still pressing for the layby to be closed and for the area of grass in front of the bus stop to be removed so we can at least get parallel to the carriageway before pulling out. We have received a response that these are all being considered as part of a major upgrade project for the A1. The layby is temporarily closed at present due to A1 barrier maintenance, but this is not a permanent closure; Pothole at the A1 Entrance to the Village – Camilla Plumb will send a photograph of the pothole to the Chairman so she can report it to PCC and Blocked Drains – these had been cleared in May 2022 and are due to be cleared in October or November 2022.

Defibrillator Training - Louise Molesworth had established that NWEA Air Ambulance Service provide free defibrillator training and she will explore this as a possible training option.

Memorial for Hubert Warren - after further discussion including the comments from residents, plus recognising the fact that it has not been the practice for the Parish Council to fund any memorials, simply providing practical support, it was decided not to go ahead with the wrought iron arch project.

Passing Places on Russell Hill - the Chairman stated that PCC are not willing to refurbish the passing places on Russell Hill and therefore this matter will not be pursued.

Website Update - it was agreed to accept the quotation for £500 from John Allsopp to update the existing Website recognising that the cost may vary once the extent of the website changes has been established. Any revision to the quotation will be discussed at a Parish Council meeting prior to final commissioning. A meeting will be held with John Allsopp and some of the Parish Councillors to discuss what is required.

Flagpole - the Chairman will speak to Yvonne Birch about using the flagpole in her garden for village use, with the Parish Council funding the refurbishment.

Social Events - the switch on of the Christmas Tree Lights will take place at 6.00 pm on 3rd December 2022. The Wansford Ukulele Band will perform. The Chairman will purchase the mulled wine, juice, mince pies and cups but she will not be able to attend on the evening. She will also purchase the Christmas Tree which is being paid for by the Bill Rogers' Memorial Fund. A collection will take place for the Children's Society.

Speeding Signs - the Chairman stated that she has established that this would be a costly project and it was agreed not to go ahead with this at present.

Jubilee Tree - Aragon has not given permission for the planting of tree to mark the Queen's Platinum Jubilee as it would get in the way of mowing where it was proposed that the tree would be planted. With no other suitable public land readily available, it was agreed to take this off the agenda.

Jubilee Book - only 8 entries to date have been received for the Jubilee Book. Hannah Joyce and Nicky Rogers are planning a mail-drop reminder to residents to residents to submit their entries for the Jubilee Book.

Village Sign - the Chairman stated that the Village Sign needs refurbishment. The Clerk will ask Glyn Mould for a quotation to undertake this work.

Planning Application 22/00431 - Change of use from Agricultural Land (Sui Generis) to Residential Garden (Use Class C3) retrospective at 16 Russell Hill, Thornhaugh – Permitted with Restrictions including time-limited permission, awarded to current residents only and no permitted development rights; 22/00506 - Change of use from agricultural land to garden land at Croft Farm, Meadow Lane, Thornhaugh – Refused and 22/00559 - Erection of eight office pods (Use Class E) with associated parking involving the removal of existing semi-permanent marquee (Sui Generis - wedding venue) - Permitted

Precept Returns 2023-2024 - the Clerk stated that Peterborough City Council require the Precept Returns 2023-2024 to be completed earlier this year. The financial information which had already been circulated was discussed and it was agreed to set the Gross Precept for 2023-2024 at £6,688 which is the same as for 2022-2023.

Approval of Code of Conduct - the new Code of Conduct distributed by PCC has been amended for Thornhaugh Parish Council and circulated prior to the meeting. All the Parish Councillors approved it, and it will be put onto the Website.

The next Thornhaugh Parish Council Meeting will take place at 7.00 pm on 21st November 2022 in St Andrew's Church.

SIBSON-CUM-STIBBINGTON PARISH COUNCIL

The Parish Council met on the 22nd September. There were two apologies for absence – Cllr. J Wright and the Parish Clerk Mrs. Wendy Gray

Cllr. Miranda Riddington kindly agreed to take the minutes of the meeting.

Cllr. Turner declared an interest on Agenda Item 7 Planning Application for 81 Elton Road.

It was raised by a member of the public that there are no APN lines outside the underpass to the right of the Post Office. This created a blockage for some hours recently which denied the Residents access to their properties. It will be raised with CCC Highways to correct this.

It was requested by a resident that the Double Yellow Lines which are to be painted on Old North Road, be extended to include parts of Church Lane. This would need to be applied for under a new LHI, so as not to delay any further the existing LHI (Local Highways Improvement grant).

The minutes of the previous meeting were not signed as some amendments needed to be dealt with. They will be reissued for approval when correct.

Orders for Payments to the Parish Clerk, and Sub Contractors for grass cutting etc.

There were three planning applications to be considered, 22/01634/HHFUL, High Leys Farm and 22/01767/LBC were returned with "No Objection". 22/01607/HHFUL 81 Elton Road was objected to and that objection has been lodged with HDC.

There was no correspondence from Residents or any General Correspondence.

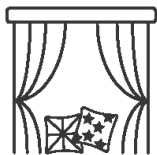
There was a question from Cllr. Riddington regarding the promised painting of the Telephone Box in the village.

Faulty lights were reported by Cllr. Engel who also enquired about the erection of the Remembrance Day "Tommies" in the village. We have two and another two are on order.

Cllr. Turner mentioned the overhanging trees in Church Lane outside Stibbington Hall. Cllr. Beuttell confirmed that there had been an application to HDC to have permission for this work to be carried out. Cllr. Turner also noted that the footpath from the Lorry Park to NVR is very overgrown and should be cleared. It was also suggested that a local Litter Pick should be arranged ASAP.

Cllr. Beuttell thanked the Public who attended the meeting and announced that the next Meeting would take place on the 3rd November in the Christie Hall at 7PM.

Next meeting scheduled for Thursday 3rd November 2022 in the Christie Hall commencing at 7 p.m.



Georgina's

Curtains & Keepsakes

*Beautiful curtains, blinds and soft furnishings
designed and created to compliment your
home.*

*For a free home consultation
and quote call 07957686595*

www.georginascurlainsandkeepsakes.com



MOBILE HAIRDRESSING

Ladies & gents hairdresser with over 30 years experience.



If you are housebound, have reduced mobility, no transport or simply prefer the convenience of having your hair done at home, I have daytime appointments available. Fully insured. Competitive prices.

Please call Tracey on 01780 782467

THE CHRISTIE HALL

Elton Road, Wansford
(registered charity no 1033998)

A well-equipped hall
with large kitchen and parking.
**Available for parties, receptions,
meetings, activity groups
and most types of private functions**

For more information and details on how to book
visit our website

www.christiehall.co.uk



WELCOME TO THE CARRIAGE



“ The Carriage is something so unique and bespoke to YOU the client, the member, the customer!
No matter the goals you have, the focus will be entirely on delivering the best coaching and service in order for you to achieve them **”**



Grange Farm Leisure
Wittering, Peterborough PE8 6NR
admin@thecarriagefitness.co.uk



Registered
Business

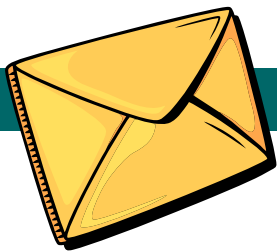


Oil boiler servicing and
repairs, heating controls,
hot water service and repairs.

Your local heating expert for
over 15 years.

Jo Childs,
8 Black Swan Spinney,
Wansford.

Mob : 07729036942



LETTERS TO THE EDITOR

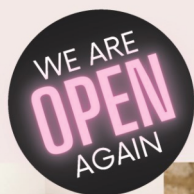
email craig@ascotgraphics.co.uk

Dear Craig,

Thank you so much for printing the poem in this month's edition! I had almost forgotten those shopkeepers and their names! Memories came rushing back as I read it over and over again

Celia Alden

Born 1930, 13 Council Houses, Stibbington
(Celia Nancy Death as was - now 92 years of age!)



polished
NAILS & BEAUTY



Award winning nail and beauty professional, providing luxurious treatments from a relaxed setting

TREATMENTS AVAILABLE

- Manicures & pedicures
- Gel polish
- Footlogix medi-pedi
- Nail rehabilitation
- Bespoke nail art
- Nail extensions
- Eyelash extensions
- Facial waxing
- Tinting
- LVL (lash lift & tint)
- IBX nail strengthening & repairing



phone 07811 057715

email hello@polished-nailsandbeauty.co.uk

website



www.polished-nailsandbeauty.co.uk

[@polishednailsandbeautyuk](https://www.facebook.com/polishednailsandbeautyuk)

THE HAYCOCK MANOR HOTEL, WANSFORD, PETERBOROUGH, PE8 6JA

Wansford Horticultural & Craft Society

Our Events are up and running

Wansford Show 2022: Raising money for charity.

Following our amazing day, we have handed over £1,736 to Helen Kingston of the Sue Ryder Thorpe Hall Hospice. The combined amount was raised at the Show by Wansford Horticultural and Craft Society; Wansford W.I. and Friends of St Mary's Church. The 3 Wansford societies all chose Sue Ryder Thorpe Hall because of how they care for our loved ones and how well the charity engages with us locally.



Well done to all our Show volunteers, sponsors and our 1,000 visitors who contributed so generously with both time and money. Let's do it again next year ! The Show is organised by the Wansford Horticultural and Crafts Society and Highlights of the Show can be found at 'Wansford Show' Facebook page - And look out for the Dam Busters video!

Also on the 10 November we will be inviting all our helpers and volunteers to the Cross Keys to say thank you.

Horticultural Society enjoy a splendid trip to RHS Bridgewater in Salford

On a lovely sunny weekend, 24&25 September, we headed in a coach northwards to visit the new RHS gardens and NT at Clumber Park on route.

The RHS garden is their first in the north of the country and has brought back to life a country estate that founded its fortune, and then its subsequent demise, on the coal pits underground. Considering that this is a brand new garden, within the walls- it is spectacular- and will get better every year.



Thank you to Sue and Quentin Arnold for arranging a splendid overnight visit. Good food (and drink!) amongst friends.

In the gardens, my particular favourite was the hydrangea beds with their huge mop head flowers (above right). Another highlight was the glorious water features in the walled garden (left).

We look forward to our talk on garden design by Joe Whitehead (head gardener at Burghley) on 20 October and our end of year Christmas Dinner on 10 December.



Gary Punter (Wansford Show Chair and Chair of Horticultural Society)



FENLAND DISTRICT BROKERS LTD

Your business needs protection at so many levels.

We can advise on full Insurance Coverage.
Local, reliable and experienced.



FOR ALL YOUR BUSINESS INSURANCE NEEDS

0808 175 3050 | 22 Cecil Road, Peterborough | www.fdbltd.co.uk

Fenland District Brokers Ltd are an Appointed Representative of Ten Insurance Service Ltd which is authorised and regulated by Financial Conduct Authority.



**From
£895***

**for a fully
fitted electric
garage door.**

Gotta get a Garolla.



Garolla garage doors are expertly made to measure in our own UK factories, they're strong and solidly built. The electric Garolla door rolls up vertically, taking up only 8 inches inside your garage, maximising valuable space. Our expert local installers will fit your new door and they'll take away the old one too, so there's no mess.

Give us a call today and we'll come and measure up **FREE** of charge.

GAROLLA
**ROLLER
SHUTTER
DOORS**



www.garolla.co.uk

CALL US TODAY ON:

01733 785 069

MOBILE:

07537 149 128

LINES OPEN 7 DAYS A WEEK

*Offer valid for openings up to 2.4m wide & including 2 remote controls, 55mm white slats, internal manual override.



Just ask

Making the right decisions can be stressful at the best of times, but we are here to help. Whatever's on your mind, just ask.

TOBIAS COLTON BA(Hons) DipPFS

Principal

TOBIAS COLTON WEALTH MANAGEMENT

Associate Partner Practice of St. James's Place Wealth Management

07468 428 380

tobias.colton@sjpp.co.uk

www.tobiascoltonwealthmanagement.co.uk



ST. JAMES'S PLACE
WEALTH MANAGEMENT

The Partner Practice is an Appointed Representative of and represents only St. James's Place Wealth Management plc (which is authorised and regulated by the Financial Conduct Authority) for the purpose of advising solely on the group's wealth management products and services, more details of which are set out on the group's website www.sjp.co.uk/products. The 'St. James's Place Partnership' and the titles 'Partner' and 'Partner Practice' are marketing terms used to describe St. James's Place representatives.

SJP12026 V1 (04/20)



HOW WE ARE DIFFERENT?

	Confirm your budget	Explain the house buying process	Find the perfect house	Save you as much money as possible	Search the whole market for the right mortgage	Deal with solicitors paperwork	Take care of all your protection needs	Be there every step of the way
US								
OTHERS								

**EARN
£50**

REFER A FRIEND:

Every time you refer friends or family to see us, benefit from our £50 'Refer a Friend' scheme when they complete!

*Terms & conditions apply.

Our team are happy to help



KATE



LAURA



HAYLEY

THERE FOR YOU EVERY STEP OF THE WAY

01205 631330 kate@homemortgagesolutions.uk www.homemortgagesolutions.uk

*Your home may be repossessed if you do not keep up repayments on your mortgage

Recipe for Pokoras from Suk

Ingredients

2 Medium Onions
 2 Medium Potatoes
 1/2 Aubergine optional
 (or replace with 1/4 cauliflower depending on size)
 200g fresh spinach leaves
 200g Gram Flour
 1 teaspoon salt or less according to taste
 2 teaspoons cumin
 2 teaspoons garam masala
 1/2 teaspoon chilly flakes
 1/2 teaspoon red chilli powder



Peel and cut onions and cut across and cut into slices.

Peel and cut potatoes into small squares (approx 2.5cm x 2.5cm 4 mm thickness)

Chop spinach

Finely chop 2 fresh chillies

Chop aubergine into small bite size pieces. If using cauliflower, cut into small bite size florets.

Method

Place all the above ingredients into a bowl, add the salt and the rest of spices and mix well.

Add the gram flour and mix again, then add approx 50-60 ml of water gradually and keep mixing using your hands until a thick batter is formed.

Heat oil in a pan suitable for deep frying.

Place table spoons of mixture into the oil and cook till light golden brown.

Serve with a sweet chutney or tomato ketchup and enjoy.

Suk's Sensations
 Learn to cook delicious authentic Indian curries
 using fresh ingredients and real Indian spices

"Hi, I'm Suk and I will be providing 2 hour demonstration sessions at my home in Sutton for small groups focussing on different recipes in each session.
 It will be good opportunity to learn new skills and meet new people in a relaxed informal atmosphere. You will also learn how to cook delicious and cost effective vegan and vegetarian recipes, allowing you to feed your family for less!
 I will be happy to include any special requests and favourite recipes and will provide a small takeaway box for each person after each session.
 Refreshments will also be included during each session"

Impress your family and friends with your own home cooked curries!
 Please call Suk on **07778 517045** for bookings and further enquires

tmk

TILES + INTERIORS

Carefully selected tiles from established UK, Italian and Spanish suppliers, all with style, quality and value in mind.



Station Road, St Ives, Cambs PE27 5BH



tmktiles.co.uk



01480 266321

In The Bleak Midwinter

An evening of enchanting choral and organ music celebrating Advent and Christmas



ST KYNEBURGHA'S CHURCH, CASTOR

SATURDAY 3RD DECEMBER 7.30PM

TICKETS £12 (CHILDREN UNDER 12 £5) FROM

WWW.STPETERSSINGERS.ORG.UK

OR CLARE HEATH 07519 156365, OR ON THE DOOR

'SEASONAL REFRESHMENTS WILL BE SERVED'



ST PETER'S
SINGERS

directed by Jeremy Jepson

St Kyneburgha Building Preservation Trust



The Building Preservation Trust for
Castor Church have their final
Autumn talk in November:

**17th November - Joint venture
with St Remigius' Friends and
Stephen Upex**

Further details and how to book can
be found on
www.castorchurchtrust.co.uk

Thornhaugh Litter Pick

A lovely sunny morning collecting rubbish through the village the A47 and the A1 (including the disgusting lay-by). Many thanks to our local councillor Gavin Elsey who rolled up his sleeves and helped out. We would love more support as we are just a few. These pictures show half what was collected plus some huge items too big to carry. Our next pick is **January 14th, 10.30am** at start of Meadow Lane. Hope to see you then. Nikki Higgins nikki@4stonecottage.co.uk



New florist shop opens in Wansford

My shop is now open in Wansford on Elton Road, PE8 6JD. The shop has a great selection of fresh and dried flowers along with homeware and gifts including a great selection of gift cards and heavenly scents from Freckleface.

Putting the fun back in floristry

It's hard to say that there's some good that comes out of a global pandemic but in my case, it's absolutely true. After being locked at home with a 6 month old and forced out of work, my journey began building this business. Flowers make me really happy. I get so excited seeing a pretty wreath, a whopper of a sunflower home-grown in a garden and driving past a huge mass of pink cherry blossom. I want to make all of my customers feel the same way when it comes to creating bespoke gifts and occasion flowers for them. I want to put the personal touch back into this industry, to hear the stories and create flower-art that leaves your heart feeling a little fuller.



Whether it's creating your dream bridal bouquet and sharing your special day with you, sending that loved person a special hand-tied bouquet to celebrate that job promotion or create a beautiful, personal tribute for a funeral; I can't wait to hear your story and create just the thing for it.

Shop Opening Hours:

Mon, Tues, Thurs, Fri – 9.30am – 4.30pm Sat – 9.30am – 12.30pm

Closed: Wed & Sun

Bouquet orders call before 12:00 for guaranteed same day delivery (on opening days).

Orders placed on a closed day will be delivered next available working day.

For Saturday deliveries orders must be received by 09:00

Contact: enquiries@flowersbytanya.co.uk Tel: 07471 284076

www.flowersbytanya.co.uk

Augean Community Fund

August 2022

The **Augean Community Fund** uses monies provided by Augean under the Landfill Communities Fund.

The company's donations relate to its two landfill operations located at Thornhaugh near Peterborough, and King's Cliffe in Northamptonshire.

Recommendations on all grants from the Fund are made by King's Cliffe Environmental Association (KCEA) and Thornhaugh Environmental Association (TEA).

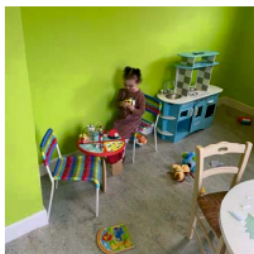
These two committees comprise volunteers from the villages of King's Cliffe, Thornhaugh and nearby, who are best able to represent local community priorities.

Application Closing Dates

There are usually two funding rounds each year, the next two closing dates are:

Wednesday 16 November 2022
decisions by End January 2023

Wednesday 31 May 2023
decisions by Early August 2023



Who can apply?

Groups with projects that are located within 10 miles of the King's Cliffe landfill site or the Thornhaugh landfill site may apply for grants. Priority will be given to applications received for projects located within 5 miles of Augean's Thornhaugh and King's Cliffe landfill sites.

What can you apply for?

Grants are available for capital improvement works to public amenity projects.

Examples may include:

- Village halls
- Nature reserves
- Village greens
- Community centres
- Public playgrounds
- Cycle paths
- Sports fields
- Sports facilities
- Country parks

You can apply for grants of between £5,000 and £50,000.

Projects must be available and open to the general public as defined by ENTRUST (the Landfill Communities Fund regulator), as a minimum, for 4 evenings a weeks, or 2 days a week, or 104 days a year.

Where can you find out more?

For more information about the Fund and how to apply, please visit GrantScape's website.

If you have a project idea that you would like to discuss before you apply, please contact the GrantScape team on:

Telephone: 01908 247630

Email: info@grantscape.org.uk

www.grantscape.org.uk



DIRECTORY OF CONTACTS

For all enquiries, contributions and adverts

Craig Bunday	craig@ascotgraphics.co.uk	07771 538661
Ascot accounts	accounts@ascotgraphics.co.uk	01487 801301

Parish Councils

Sutton	Deirdre McCumiskey (Clerk)	01780 782668
Wansford	Marie Lewis (Clerk)	07899 732049
Sibson-cum-Stibbington	Wendy Gray (Clerk)	01778 441312
Thornhaugh	Deirdre McCumiskey (Clerk)	01780 782668
Water Newton (Parish Meeting)	Caroline Nathan (Chairman)	07989 362514

City Councillor (Wittering Ward) - Gavin Elsey **07738930599**

Churches

Ministers: Thornhaugh & Wansford 01780 782271
 Stibbington, Sutton, Castor & Water Newton 01733 380900
admin.castor@btconnect.com

Churchwardens:

St Andrew's Thornhaugh:	Stuart Foreman	01780 783220
	Liz Kemp	01780 782333
St Mary's Wansford:	Caroline Ashley	01780 782408
	Alan Jones	01780 783205
St John the Baptist, Stibbington	Charlotte Bradshaw	01780 781805

Friends:

St Mary's & St Andrew's	Caroline Ashley	01780 782408
St Remigius Water Newton	Tony Capon	01733 237500

Other useful contacts

Neighbourhood Policing	101	P'boro City Council	01733 747474
Wansford Surgery	01780 782342	Royal British Legion	01780 782200
(Out of hours	111 option 4)	Stibbington & Wansford WI .	781733
Wansford Pharmacy	01780 781616	Cricket Club	07860 278800
Communicare	01780 470437	Horticultural Society	01780 592514
H'don District Council	01480 388388	Stibbington Centre	01780 782386

Website www.livingvillagesmagazine.co.uk

©2022 Living Villages Magazine The contents of this magazine may not be copied, reproduced, distributed, republished, downloaded, displayed, posted or transmitted in any form or by any means without the prior written permission of Living Villages Magazine. You may not distribute, display or copy any of the contents of the pages contained in this magazine to third parties without the prior written permission of Living Villages Magazine. All images shown in this magazine are the property of Living Villages Magazine unless otherwise accredited to another. Images may not be used without the prior written permission of Living Villages Magazine or the accredited owner. Unless otherwise specified, the authors of the literary and artistic works in the pages in this magazine have asserted their moral right pursuant to Section 77 of the Copyright Designs and Patents Act 1988 to be identified as the author of those works. If permission is sort and given, it is expected that all articles/images be accredited to either Living Villages Magazine or the author of said articles/images. The views expressed in articles published are strictly those of the writer, and not of Living Villages. Living Villages cannot vouch for products and services advertised, nor accept any liability resulting from the purchasing of product or services, although care is taken to ensure their suitability.

NEED A LOCAL PLUMBER?

PlumbCall Plumbing & heating
Same day / next day service!

- Gas, Electric, Oil, LPG & Solar
- Central heating: Full design & installation
- High efficiency boilers
- Boiler / combi replacements
- Central heating, boiler breakdown & plumbing aftercare
- Underfloor heating specialist
- Power flushing
- Landlord certificates
- Free estimating service
- Annual servicing
- All work guaranteed
- OFTEC Registered

12 year manufacturer's guarantee on selected boilers
(Terms & Conditions apply)

CALL US TODAY!

01733 243 047

or 07860 257 803

E: advice@plumb-call.co.uk

W: www.plumb-call.co.uk

Gas Safe Register No.8494
LPG Registered



*subject to acceptance terms and conditions apply



“Achieving the best price for our clients is our highest priority”

- Local
- Professional
- Experienced *Estate Agents*



www.nortonrickett.co.uk

01780 782 999



Crown

Property Services

- 👑 Electrical & Plumbing
- 👑 Kitchens & Bathrooms
- 👑 Renovations
- 👑 Extensions
- 👑 Windows & Doors
- 👑 Groundworks
- 👑 Landscaping
- 👑 Internal Refurbishment

Old Sulehay Cottages, Sulehay Road, Wansford. PE8 6PA

07766 168659

jonathon@hibbins.me

Village Pizzas

Open Tue – Sat for
Collection / Eat-In at
Leedsgate Farm
4.30pm – 10pm

Or
Delivery 6pm till 10pm

01780 784587

View our Menu at
www.villagepizzas.co.uk



Mat based Pilates and Chairiobics
Classes for all levels

MAT BASED PILATES

1 hr classes

Online on Zoom, or in person at
Christie Village Hall (Wansford) and Harringworth Village Hall

Monday, Tuesday, Wednesday and Thursday
£3.50 online / £6 in person



Ease back pain
Strengthen your core, abs and back
Improve sports performance
Exercise without joint pain
Increase your flexibility
Boost brain power and focus

Christie Village Hall:
18:00 Monday /
12:30 Wednesday / 18:00 Thursday
Online:
18:45 Monday / 11:30 Thursday
11:00 & 12:30 Tuesday

Justine
BROMAGE FITNESS

Justine Bromage
Fully Qualified Level 3 Pilates Instructor
Level 3 Personal Trainer
RSA to Music Instructor

justwhim@hotmail.com

07919 106156

Barnlogs
Kiln Dried Hardwood

KILN DRIED HARDWOOD LOGS

Prices from £115 per
loose cubic metre

Certified 'Ready to Burn'
Bagged or loose loads
Sustainably sourced
local hardwood
Ultimate clean burn
with maximum heat output
Kindling &
firelighters available

FREE LOCAL DELIVERY

£5 OFF with code
LIVINGVILLAGES-5

ORDER ONLINE: www.barnlogs.co.uk

01780 784055 / 07734 439292 sales@barnlogs.co.uk

**SAVE
MONEY
ON YOUR
ENERGY
BILLS**

