

Living Villages

Image taken by John Measures



October 2023

*Water Newton Thornhaugh
Stibbington Sutton Wansford*

Tough decisions for UK investors

Forcing people to pay more tax on their hard-earned savings is not a popular policy for governments but it is something that UK investors face in the upcoming financial year after chancellor Jeremy Hunt confirmed a reduction to the capital gains allowance from April.

For investors, the most obvious effect on their savings is that any investment held outside an ISA or pension will be subject to capital gains tax.

• **These tax hikes mean that owning assets outside of tax effective wrappers is getting more expensive. One option available to investors is the often overlooked 'Bed and ISA', which is when any savings held in a general investment account are transferred over to an ISA.**

If you're planning to gift assets to someone else, then it could be worth making use of your annual CGT allowance this year before it's reduced.

Many people don't realise that you also owe capital gains tax on assets gifted to someone else.

• The gain is based on the market value at the time of the gift but tax planning decisions are complicated and it's important not to let the tax tail wag the financial planning dog."

Simon Every AwPETR Adv DipFA Chartered ALIBF - Hill Grafford

Is it time to consider how your assets are invested?

Our Aim at Hill Grafford

To be there as an expert who knows you and your family personally to the extent that we can customise a financial plan that exactly fits your personal requirements.

We provide Holistic Advice on

- Long term care investment solutions
- Pension & investments
- Offshore and onshore tax planning
- Inheritance tax solutions
- Setting up of Trusts based investment solutions

We're here to help.

We were rated a Top Rated Financial Adviser for 2020 and 2021 - as distributed in The Times

Speak to one of our Local Chartered Financial Advisers today on

01780 784310 or 07967 015 805

www.hillgrafford.co.uk

A copy of client reviews can be emailed upon request.



Editorial

Dear readers

As I write this editorial, it seems that the summer is finally over - the clattering of yet another downpour hits the glass in the conservatory. But let's look back on a mixed bag of weather - dark clouds form a backdrop of the pictures from this year's Wansford Show (page 20), and a somewhat dryer affair was reported at **Wansford's 'Let Us Entertain You'** (because it was indoors - nothing to do with acts!!) on page 14. As promoted last month **Nassington Church** are hosting their own '**There's No Business Like Showbusiness**' - details are on page 13.

Gas, Electric, Mobile Phone and Broadband prices are something many households battle to keep under control, so on page 19 we have an offer to all readers to check if they can make any savings by comparing their bills, through our new collaboration with national supplier and Which magazine award winner Utility Warehouse.

This time next month the nights will be drawing in, the bonfires will be lit, and we'll be looking ahead to the festive season, so please keep us informed of any forthcoming events that you would like to promote in these pages, and I wish you a happy October.

Best wishes

Craig

Contents

6	Worship & Benefices
10	Stibbington and Wansford W.I.
16	Parish Council Notices and Minutes
20	Wansford Horticultural & Craft Society
26	Contacts

Studying for a course?- Did you know you can apply for a grant?

Since the early 1990s the **Reverend Thomas Woolsey's Charity** has been giving for equipment to all students from Thornhaugh and Wansford for further education, apprenticeship or skills.

The Trustees of the charity will be meeting in September to allocate the grants, so there is plenty of time for any student to apply. Go to the website **thewoolseycharity.co.uk** to for more information and complete the application form.

Lisa Chambers, Secretary, Rev. Thomas Woolsey's Charity



LAUREN BAILEY

AESTHETICS

Our treatments include:

- Skin Boosters - Prohilo, Seventy Hyal, Lumi Eyes, Sunekos & Jalupro
- Advanced Anti Wrinkle Injections
- Treatment of Excessive Sweating
- Fat Dissolving
- Lip Enhancement
- Chemical Peels
- Vitamin Injections
- Dermal Fillers
- Micro-Needling
- PDO Threads

Find us on   laurenbaileyaesthetics

Scan QR Code to book



COVERING WANSFORD, STAMFORD & PETERBOROUGH



Dry carpet cleaning and upholstery cleaning services in Peterborough and the surrounding areas.

Whether you have an individual chair or carpet in a domestic property, or are interested in contract carpet cleaning in your business, you can benefit from our 35 years experience.

Telephone: **01832 280429**

Mobile: **07951 124374**

Email: **info@bcnmulticlean.co.uk**

GRIFFIN

**Solid Fuel Merchant
Supplier of Pre Packs**

**Coal Bunkers Charcoal Compost
Flo Gas Logs & Sticks Salt**

**Coal Yard
Station Road
Nassington
01780 782540**

**Office
12 Church Hill
Castor
01733 380470**

BARKLEYS GARDEN SERVICES

Your LOCAL Gardening Team

Regular garden maintenance

Lawn care and mowing

Hedge trimming

Lady gardener available

Get in touch by calling

Bev - 07593 721144

Peter - 07747 502471

beverleybarkley1@gmail.com

NEED A RECOMMENDATION?

The **ONLY** Police Checked
recommended register of
local approved traders



FREE and EASY service

safelocaltrades.com

Recommended & Approved



Much more than just a recommendation ...

Serving the PE Postcode community since 2008

Over 70 different trade categories and over 17,500 reviews

Here are some of our members ...

New Garage Doors & Repairs



**GARAGE DOOR &
SHUTTER SERVICES**

www.garagedoorandshutterservices.co.uk

Call Dave on

07709 337647

Electrician

**OLD COURT
ELECTRICAL**

www.oldcourtelectrical.co.uk

Call David on

07973 507420

**Loft Insulation & Boarding,
Cavity Wall Insulation**



www.atoz-energy.co.uk

Call Leanne on

07878 314562

Building & Carpentry Services



Steve Deprez & Son

Building • Brickwork • Carpentry

Preserving the past, Building the future

stevedeprezbuilders@gmail.com

Call Steve on

07414 292188

**Driveways, Patios &
Hard Landscaping**

**STYLE
HOME IMPROVEMENTS LTD**

www.styleimprovements.com

Call Tony on

07879 881315

Gutter Cleaning & Repairs



www.guttercleancompany.com

Call Jeremy on

0800 179 9363

To see our full list of members and read all reviews just go to ...



www.safelocaltrades.com



0800 014 1832



The safest way to source local traders

Tear out page and keep

WORSHIP DATES

Every Sunday 5.00pm - Zoom 'At Home' Service. Log in and phone details from Rev. Jane jdtailby@aol.com 01780 782271

St. Leonard's, Apethorpe

1 st	11.00 a.m.	Holy Communion
15 th	6.00 p.m.	Harvest Festival
29 th	10.00 a.m.	BENEFICE HOLY COMMUNION

St. Mary's and All Saints, Nassington

Every Thursday 9.30 a.m. Holy Communion BCP		
1 st	8.15 a.m.	Holy Communion BCP
1 st	9.30 a.m.	Holy Communion
8 th	9.30 a.m.	Holy Communion
15 th	9.30 a.m.	Family Service and Crafts
22 nd	11.00 a.m.	BENEFICE HOLY COMMUNION AND CELEBRATION OF MINISTRY for Revd. Peter Morrell

St. Mary's, Wansford

Every Wednesday 10.00 a.m. Morning Prayer		
8 th	3.30 p.m.	Holy Communion

St. Mary's, Woodnewton

1 st	9.30 a.m.	Holy Communion
15 th	9.30 a.m.	Holy Communion

St. Mary Magdalene's, Yarwell

8 th	11.00 a.m.	Holy Communion
15 th	3.00 p.m.	Methodist Service
22 nd	11.00 a.m.	Holy Communion

St. Andrew's, Thornhaugh

1 st	9.30 a.m.	Holy Communion
15 th	9.30 a.m.	Morning Prayer

CASTOR BENEFICE

We are still maintaining the following service pattern every Sunday in each of our **Parish churches** until further notice.

Marholm 9.00am - Holy Communion (Morning Prayer on 4th Sunday)

Castor 8.00am Holy Communion (said service) 10.15am - Sung Eucharist

Sutton 9.00am on 4th Sunday of the month - Holy Communion

Every **Wednesday** morning at **10am** there is a service of Holy Communion at **Castor**.

We still continue to celebrate **Evensong via Zoom at 6pm every Sunday**, if you wish to join us please contact the Benefice office for the Zoom link and access code.

admin.castor@btconnect.com

Advance Notice - The next service at St. John the Baptist, Stibbington will be to celebrate **Harvest Thanksgiving on Sunday the 8th of October at 4pm**, see separate poster.

David Ridgeway

ST. JOHN THE BAPTIST STIBBINGTON

HARVEST THANKSGIVING

SUNDAY 8th OCTOBER, 4.00 pm



REFRESHMENTS WILL BE SERVED AFTER THE SERVICE

Do come and join us, you will be assured of a very warm welcome

You will see from the service list that our pattern is slightly different this month, with an additional service for all the

REFLECTIONS

churches in our Benefice instead of our usual 4th Sunday service pattern on 22nd October. The service will be at Nassington Church and we will be celebrating the ministry of Revd. Peter Morrell who has ministered in the Benefice, first as a Reader, then as a Priest for many years. Peter will be retiring from his formal ministry after this service. All are invited to share this celebration and thanksgiving; **please note that we begin at 11 a.m.** We will have our usual 5th Sunday Benefice Service the following week, this time at Apethorpe, so we will have two opportunities to worship together celebrating our fellowship as a group of parishes.

A couple of months ago we had a similar service of thanksgiving for the ministries of Revd. Peter Konig as Associate Priest in the Benefice and Jan Downey as our Reader. Peter and his wife, Anne, have now moved to Scotland and Jan has retired from her Reader ministry and is now Reader Emeritus.

We give thanks to God for the faithful service of these three within the Benefice for so many years. Each had, and still has, a unique place in our life together, supported by their families and those nearest to them. It is perhaps too easy to forget that none of us operate in a vacuum and those who perform a formal ministry or service are usually supported by family members "in the background" whose contributions should also be recognised. Of course this true in a wider context as well; whatever is seen as formal service in our communities or our churches is supported by many who contribute so much "behind the scenes" and we should give thanks for all they do as well. May we all find our own ways of contributing to the life and well-being of our communities, our families and our churches, whether that is "front of house" or "behind the scenes". Whatever we do is all of equal value and is much needed!

With every blessing
Rev. Jane

Woodland Timber Products

Fencing, Play Houses, Gates
Pet Housing, Sheds



01780
783983



Unit 4, Leedsgate Farm Business Park.
Kings Cliffe Road. Wansford PE8 6NX.
07748 787360
woodlandtimber.products@yahoo.com



Podiatry & Chiropody

Cracked Heels, Corns, Diabetic Foot Care,
Calluses, Hard Skin, Verrucae Treatments;
Biomechanics & Orthotics
Nail Surgery, Ingrown Nails,
Cryo Aesthetics for Skin Lesions,
Wilde Pedique Nail Reconstruction

01780 782200

Home Visits Available

Sue Arnold BSc(Hons) MRCPod & Associates
19 Elton Road, Wansford, PE8 6JD
wansfordinstep@gmail.com

Now
Accepting
New
Patients!

Ear Wax Microsuction

Ear Ache? Hearing Loss? Blocked Ears?
Need A Pre Hearing Test Clean?
It could just be wax!



Castor Lodge Care Home

Our family, caring for yours

At Castor Lodge, our care is the kind we would want all of our loved ones to receive. Offering residential and dementia care, our dedicated team make life comfortable and enjoyable for all our residents, allowing them to live safely and as they choose. Our brand new home is luxurious and beautifully furnished, whilst retaining a warm family atmosphere that makes Castor Lodge feel extra special.

- 68 Spacious en-suite bedrooms
- 6 Premium self-contained suites
- Bistro Café and themed pub
- Sociable lounge and dining areas

To find out more about life at Castor Lodge contact our Customer Relations Manager Laura Mills on 07725 799 217 or email laura.mills@countrycourtcare.com



01733 823 163



Splash Lane, Castor, Peterborough, PE5 7BD



www.countrycourtcare.com

 **Country Court**
Our family, caring for yours



The Friends of St Mary's and St Andrew's

On **Wednesday 18th October**, we will be having our **Harvest Lunch at 12.30 in St Mary's Church**. Come and have a lovely buffet lunch for £8.00 and help us to support the Peterborough Soup Kitchen. There will be a list of suitable items to donate if anyone wishes to bring anything.

We hope to see you there!

Caroline Ashley



THE ARTS SOCIETY PETERBOROUGH

The Arts Society is a leading arts education organisation that brings people together through a shared curiosity for the arts. Each year The Arts Society Peterborough (TASP) holds nine illustrated talks given by experts in their field on subjects ranging widely, including old Masters, modern sculpture, silver jewellery, the work of David Hockney and music in art. The talks are held at

The Fleet in Fletton Peterborough on the second Thursday of each month except June, July and August. The talks start at 10.45 am but you are welcome to come earlier and meet like-minded people for a chat over a cup of coffee. Non-members are always welcome and the first talk is free, so come and join us!

In addition to the live talks, annual members also receive other benefits. If you wish to find out more about our Society or about becoming a member, please visit our website, www.the-arts-society-peterborough.org.uk Our next two talks are:.

12 OCTOBER 2023

1968, the year that changed the direction of art by Anna Moszynska

What happened in '68? A series of major events shook the world and artists responded to the changing times by making work that challenged the traditional assumptions of art.

9 NOVEMBER 2023

The state of British Crafts by Dr Jonathan Foyle

Dr Jonathan Foyle has written over 100,000 words in the Financial Times Weekend on craftspeople: their passions, skills and materials. Some of them believe they are the last practitioners of their craft. How and why do people transform raw materials into works of art?

WANSFORD COMMUNITY HALL

Peterborough Road, Wansford

This hall accommodates parties of up to 36 people seated. Ideal for Meetings, Workshops, Aerobics etc

GREAT VALUE AT ONLY £4 per hour
FOR BOOKINGS TELEPHONE
John Stannage 07879 485330

Capitol Lettours



Your local property agent

**With over 30 years of
experience**

Relocation, Lettings and Sales

**Please call our office for a
competitive quote**

Peterborough - 01733 553366

(enquiries@capitollettours.com)

www.capitollettours.com

STIBBINGTON & WANSFORD WI

Today's women working for tomorrow's world



On a wild and wet September evening we met for our September meeting, with our guest speaker Gary Punter, who took us through his working industrial journey 'From Sugar to Shoes'.

As a chemical engineer, Gary worked for British Sugar. Here he supported the various sugar factories to become more productive, efficient and as a result to reduce their energy usage. Culminating in converting Wissington factory, near Downham Market, into a 'no waste factory'.

Raw sugar beet (3-4 million tons per year) enters the factory, and out the other end comes bags of granulated sugar in silver spoon bags. However, all the waste products generated through sugar production, including Carbon dioxide, heat and steam are all put to good use.

Taken to the on site green houses for tomato production, or used in the power station to generate electricity for the factory and local community. These ideas were taken to factories in Africa and China.

Once retired, Gary became a Fellow at Cambridge University, working alongside the Institute of manufacturing, where he was able to take his ideas of sustainability to develop a methodology that sees working practices within factories become more sustainable, by engaging and empowering the factory teams so that they are able reduce their energy usages, and waste production. At present, Gary and the team are working with Chanel shoe and handbag factories (Milan & Paris), putting all this theory into practice.

Before I end this report, a big thank you to all who supported us at the Wansford Show, £111 was raised in support of Sue Ryder Thorpe Hall. The ladies are busy developing new ideas for the show in 2024, Thank you and see you next summer.

Over Autumn and winter we will be meeting in Wansford Community Hall, if you wish to attend one of our upcoming meetings to hear one of our visiting speakers, please get in touch. Please see below for our upcoming events:

Tuesday 10th October W.I. meeting, Tanya Fenton will lead an interactive flower arranging session – at Wansford Community Hall

Tuesday 3rd & 17th October 2023, 2-4pm Coffee & Craft club, at Wansford Community Hall

Thursday 30th November 2023, 7.30pm Book Club meeting, at The Cross Keys Wansford,

Tuesday 14th November W.I. meeting, The Wick & Wax company.. the story so far. Speaker Sasha Olsen– at Wansford Community Hall

Both the Coffee & Craft club, and Book Club are open to all, (not just for WI members) and we look forward to others joining us.

Rhona Punter, email - rhonapunter@aol.com

Call us today to book your
free appointment

Heritage Wills

Peace of mind when you need it most



Will Writing



Client Care
Package



Lasting Power
of Attorney



Agricultural
Property Relief



Trusts



Corporate
Benefit Package



Property
Protection Trusts



Tennants in
Common



Probate Services



Property
Title Change

01480 465855 | heritagewills.co.uk

HLC Business Centre, 5 The Quay, St Ives,
Cambridgeshire, PE27 5AR

OVER 50 YEARS EXPERIENCE

Car buying as it should be; simplistic, with no admin fees, no pressure and a wealth of knowledge to help you find your dream car.

Great part exchange prices given

Finance from as low as 6.9%

www.heartysofpeterborough.co.uk

01733 560605

sales@heartysofpeterborough.co.uk



HEARTYS
of Peterborough

THE CHRISTIE HALL

Elton Road, Wansford
(registered charity no 1033998)

A well-equipped hall
with large kitchen and parking.

**Available for parties, receptions,
meetings, activity groups**

and most types of private functions

For more information and details on how to book
visit our website

www.christiehall.co.uk

MOBILE HAIRDRESSING

Ladies & gents hairdresser with over
30 years experience.

If you are housebound, have reduced
mobility, no transport or simply prefer the
convenience of having your hair done at
home, I have daytime appointments
available. Fully insured. Competitive prices.

Please call Tracey on 01780 782467



PAWS AND CLAWS



Boarding Cattery

*"Cats have a 'tail' to tell when they've 'paws'd'
awhile at Wansford's 5 Star Purr Palace"*

Tel 01780 782174

e-mail

pawsandclaws@hotmail.com

Working with Peterborough Cat Rescue to rehome cats
and kittens seeking loving homes and laps on which to purr

Peterborough City Council & Rutland County Council
Licence Number: 078015

There's No Business like Show Business!



Friday 20th October

7:45

Nassington Church



Join the Yarwell and Nassington Band for a sparkling evening of entertainment!

Bar and Raffle

Tickets £10 from Nassington Stores, Mould's Butchers and Eventbrite. Buy 10 get one free.

Supporting the Nene Valley Care Trust

Wansford is thoroughly entertained!

Wansford Let US Entertain You Concert - 15.09.23

The evening began in lively fashion with the Wansford Community Choir singing specially written words to the Robbie Williams classic song with the first verse as follows:

***Wansford is the place to be
You are going to hear and see
Fun and vocal harmony
Now scream!
Our great evening has begun
We are ready for some fun
Entertaining everyone my dears
So come on let us entertain you***



It did prove to be an entertaining evening for a large and enthusiastic audience with comedy, magic and a wide variety of music.

Some of the highlights were:

Tony Cooper from Nassington who had everyone enthralled with his magic tricks and particular

brand of humour.

The Rhapsody Ladies Barbers Shop Singers produced a very professional performance with beautiful harmonies and also added glamour to the evening.

Stephen Barber from KingsCliffe put the



Wansford Church Organ through its paces with two excellent pieces of classical music.

Fellacapella amused the audience with their own version of Go West prior to closing proceedings with the traditional folk song Parting Glass.



The novelty act of the evening was 4 volunteers with no previous experience playing hand bells under direction from

Tony. After some

encouragement they collectively made a good sound and some people even recognised the tune!!

Wansford Church are grateful to all the performers and to everyone who came along to support the event which was raising funds for the upkeep of the church building.





Your trusted advisers

We provide individuals and businesses with a full range of accounting, audit, corporate and personal tax planning services.

- Audit and Accountancy
- Business Acquisitions and Disposals
- Business Plans and Projections
- Corporate and Personal Taxation
- Grant Funding
- MT Cloud Accounting
- Payroll, Bookkeeping and VAT
- Tax Planning and Mitigation

For more information,
please contact us:

 **01733 560160**
moorethompson.co.uk

Peterborough | Spalding | Wisbech | Market Deeping



Moore Thompson is registered to carry on audit work in the UK
by the Institute of Chartered Accountants in England and Wales.



WANSFORD PARISH COUNCIL



Wansford Parish Council met on Monday, the 11th of September with two parishioners present. Discussion was raised about a planning application where it appears the extension of a house is going right to the edge of the plot without due regard to neighbours, but it is difficult to work out from the diagrams exactly what is required as few dimensions are shown.

There was a proposal to plant 6ha of woodland on Land owned by Castle Farm, Stibbington. This will be 90m away from Thackers Close on the north side of the A47. This development was in public consultation and very much welcomed by Wansford Parish Council, a map of the area has been uploaded on the Wansford Parish Council website. We all agreed that this would be a welcome addition to the parish.

Wansford Bridge: A Multi-Agency meeting would take place with National Highways, the Police, Peterborough City Council, Historic England, Sibson cum Stibbington parish council, Cambridgeshire County Council and Wansford Parish Council on 27 September 2023 to look at ways to preserve Wansford Bridge. The Chairman reported that the Chair of Sibson cum Stibbington Parish Council had suggested physical stops at each end of the bridge to prevent the access of HGVs. The meeting would take place as a Working Party; the Bridge completion is aiming to be the 14th of October.

The former Mayor of Peterborough had arranged for the Mayor's Charity donation of £500 to be paid to each village of Castor, Ailsworth, Wansford and Wittering to assist patients without transport to attend healthcare appointments. The Chairman had spoken with Wansford Surgery and it had been agreed that money for transport would be distributed to patients through their Reception until it was depleted. The money would also pay for transport to hospital appointments. Wansford Surgery would maintain an account of each expenditure.

Wansford Youth Council has had some positive effects within the village with planting and hanging of birdfeeders and bird houses, their next meeting will be the 26th of September in the Community Hall.

Discussion on the bus service is ongoing with Cambridge and Peterborough Combined Authority and a minibus has driven along the proposed route looking at the problems involved.

A new vehicle activated speed sign will be purchased to allow different places for the speed to be checked within the village.

The National Highways Designated Fund was discussed to see if there is any possibility of funding to reduce traffic noise within the village through low noise fencing, and quiet tarmac being laid, also if it can be used on increasing parking spaces in Nene Close.

Councillor Graham Garner

THORNHAUGH PARISH COUNCIL

The next Thornhaugh Parish Council Meeting will take place at **7.00 pm on 18th September 2023 in St Andrew's Church**. A report will appear in a future edition of Living Villages.

SIBSON-CUM-STIBBINGTON PARISH COUNCIL

Sibson cum Stibbington Parish Council met on 7th September with 6 Councillors and six member of the public present. With M Beutell chairing the meeting. Minutes of the previous meeting were approved and signed.

Points raised by residents included concerns over the number of cars visiting The Haycock but choosing to park on the street instead of the dedicated car park. The action to follow up with The Haycock regarding this was taken by Parish Chair.

An incident raised by residents was in relation to missing white lines to prevent parking across driveways, and follow up with the Highways Agency will be made during their next local visit to the area.

Since the last Parish Council meeting, and incident involving a vehicle destroying an electric box located at the end of the A1 slip road joining Church Lane has taken place. Options to better manage this exit and the surrounding hazards, such as the electrical box will be explored e.g. 30mph limit sign.

An update on actions arising from previous meetings included further research and enquires taking place to facilitate the installation of a Parish noticeboard, Cllr Engel followed up with residents where overgrown plants and shrubs have been recognised as blocking pedestrian access, which in turn may be hazardous to pedestrians having to revert to using the road to pass by. Offending sites will be written to in due course to explain the requirements to cut back.

Additional signs will be printed and distributed and erected to notify river users of the requirement to have correct permits.

Discussions are ongoing regarding the request for a play area in Stibbington, but it would appear that the cost could be prohibitive. Payments were agreed as per the minutes.

The following planning applications were discussed:

- 23/01338/CLED – the meeting was unanimously against granting this application and as such this has been submitted as an objection via the HDC planning platform.
- 23/01316/HHFUL – it is believed that archaeological investigation will be necessary before any application is granted as previous residents in this area have been required to have them due to roman remains being in the vicinity.

General correspondence consisted of a discussion about any viable locations for a District Council backed pilot for Electric Vehicle changing points. Where it was agreed that the area adjacent to the defib phone box approaching the A1 by The Haycock Hotel would make a viable location and this will be submitted for consideration.

The Parish Council would like to make residents aware that now yellow lines have been installed in the Parish, it is now possible to notify the police of any illegal parking to the Police.

Options to insert padlocks at the two entrances to the field behind Christie Hall to better manage the security of the site are being explored.

There will be a meeting held to update on the the Wansford Bridge closure on 27th September – this would be a good opportunity to suggest traffic control systems to prevent oversized vehicles using the bridge – Councillor Beuttell to attend the meeting are report back.

The date of the next Sibson cum Stibbington Parish Council meeting is set for **Thursday 2nd November 2023** and will take place at Christie Hall commencing at 7pm.



Just ask

Making the right decisions can be stressful at the best of times, but we are here to help. Whatever's on your mind, just ask.

TOBIAS COLTON (BA)(Hons) DipPFS
Principal
TOBIAS COLTON WEALTH MANAGEMENT
Associate Partner Practice of St. James's Place Wealth Management
07468 428 380
tobias.colton@sjpg.co.uk
www.tobiascoltonwealthmanagement.co.uk




ST. JAMES'S PLACE
WEALTH MANAGEMENT

The Partner Practice is an Appointed Representative of and represents only St. James's Place Wealth Management plc (which is authorised and regulated by the Financial Conduct Authority) for the purpose of advising solely on the group's wealth management products and services, more details of which are set out on the group's website www.sjp.co.uk/products.
The St. James's Place Partnership and the titles Partner and Partner Practice are marketing terms used to describe St. James's Place representatives.

SJP1206 V1 (04/08)

In Collaboration with Utility Warehouse
 - an offer from Ascot Graphics
 to all readers of **Living Villages Magazine**

save a bundle

The simplest way to save on your household bills

Build your
 bundle to
 unlock
 savings



Plus earn **Cashback**

at 100+ retailers with the
 UW Cashback Card



Save money on your utilities

Get a comparison quote and see
 how much you can save

Use the link below

<https://uw.partners/ascot.graphics/join>

Tel: 07908592643

Wansford Horticultural & Craft Society

'Wow what a busy time'



Thank you for your continued support this year. The Show looked splendid and whilst numbers were down due to the good old British weather and the bridge closure, we still laid on a fantastic day for our village and visitors.

Real highlights were the music, food and drink and an amazing 1st year for our Art in the Marquee. The talent on display from our local artists was truly amazing. If you did not buy art at the Show and have a bare wall then 'look local'. The Tug of War bragging rights were transferred to the South of the river and I sure the North will be complaining about the slippery conditions – there is always next year.

Well done to all those who entered exhibits into the marquee (veg, flowers, baking, art, photography and children's). We really resonated with local artists which has become the biggest category. For the 1st time more people entered from outside of Wansford. A question – how do we get more exhibits entered from within the village ? We know gardening cooking and crafting are popular !

Financially our Show remains profitable (which is unusual for such events) and we cleared £1200.

Unfortunately, after the Show, the electrical generator (on hire) was stolen from the field. The consequences are still unfolding (& police investigating) but the impact could be financially severe for our Horticultural Society and charity giving to Sue Ryder (who are aware and supportive of our situation). We cannot allow a few thieving 'bleaps' to hold us back, but lots to learn.

A big well done to all involved, especially your Show Committee of Quentin, Rhona, Mandy, Liz, Ian, Debbie, Nigel, Jim, Jon, Annie, Sue, Hattie & Marcus. We also want to give great thanks to our sponsors & supporters: Bradshaw's, The Cross Keys, The Paper Mills, Flowers by Tanya, The Haycock Manor, Berryfields Wedding & Glamping, InStep Foot Clinic, Hearty's of Peterborough, Wansford Cricket Club, WI, St Mary's Church, Glen Boats and our PCC's.

Finally, our village have again pulled off a remarkable Show. Congratulations for a great team effort. What makes me so proud is the massive generosity of 72 volunteers and sponsors who stepped up to make this a truly marvellous community event.

Best Wishes, Gary Punter.

Chairman of Wansford Horticultural & Craft Society

The Pictures tell the Story of the Show





Ice cream & umbrella!



Veg, Flower & Craft exhibits



Art in the Marquee



50 classic cars, bikes & trucks



Just 1 of Glen's lovely boats



Age organised the Art in the Marquee

Enjoying Music in a
deck chair



Wansford Show 2023 'Trophy Winners'

Cup	Category	Name
Skevington Cup	Best Vegetable	Edith Laprun
Group Captain Hartley Cup	Best Fruit	Ruby Bradshaw
Christie Memorial Cup	Fruit Collection	Gary Punter
Garden News Cup	Vegetable Collection	Gary Punter
The Benton Jones Cup	Best Dahlia	Gloria Malton
President's Cup	Flower Collection	Bridget Bradley
Chairman's Trophy	Overall Best Rose	Liz Harris
The Philip Wiles Cup	Best hanging basket/pot	Liz Harris
Marina Kruger Cup	Best Garden	Sue Arnold
Elborne Cup	Floral Art	Mandy Veni
Coronation Cup	Best food exhibit	Gloria Malton
Elcombe Trophy	Fruit Liqueur	Matt Hunt

Cup	Category	Name
Craft Cup	Best craft	Lindsey Freeman
President's Cup	Adult Art	Tracey Stubbins
President's Cup	Photography	Nigel Fawthrop
ARC Shield	Children's Craft	Maddie Cartwright
Yendall Cup	Best Children's photo	Ruby Bradshaw
Thompson Cup	Best children's cookery	Ruby Bradshaw
Sacrewell Cup	Longest runner bean	Arthur Wright
Gilbert Cup	Best Children's veg, fruit or flower	Ruby Bradshaw
Wonkiest Veg	Weirdest Shape Veg	Arthur Wright
Banksian Medal	Most points in veg/fruit	Gary Punter
Sponsors Cup	Best newcomer	Tracey Stubbins
Len Hall Trophy	Overall Best adult exhibit	Mandy Veni
The Cracknell Cup	Overall Best child exhibit	Maddie Cartwright
Family Trophy	Family with most 1,2,3 places	The Hunt Family



FENLAND DISTRICT BROKERS LTD

Your business needs protection at
so many levels.

We can advise on full Insurance Coverage.
Local, reliable and experienced.



FOR ALL YOUR BUSINESS INSURANCE NEEDS

0808 175 3050 | 22 Cecil Road, Peterborough | www.fdb ltd.co.uk

Fenland District Brokers Ltd are an Appointed Representative of Ten Insurance Service Ltd which is authorised and regulated by Financial Conduct Authority.

tmk

TILES + INTERIORS

Carefully selected tiles from
established UK, Italian and
Spanish suppliers, all with style,
quality and value in mind.



Station Road, St Ives, Cambs PE27 5BH



tmk tiles.co.uk



01480 266321



Georgina's
Curtains & Keepsakes

Covering all the Villages
Stamford to Stibbington
(and everywhere inbetween!)



Bespoke handmade curtains, roman blinds and soft furnishings to complement your home.
For a free consultation and quote call 07957 686595
www.georginascurtainsandkeepsakes.com

PETER RIDDINGTON LANDSCAPING

We supply and install Patios & Pathways, Decking, Stone Walls and Fencing,
We plant Trees, Shrubs Hedges and Flowers, and offer a complete Garden
Maintenance and Improvement Service. Garden design service provided
Contact Peter Riddington today for a free quotation

4 LOCKS GREEN, YARWELL, PETERBOROUGH PE8 6PY
Telephone: 01780 783004 Mobile: 07860 962068
Email: peter@peteriddington.co.uk



Registered
Business



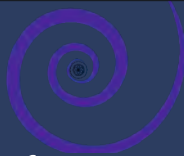
jc.heating
SERVICES

Oil boiler servicing and
repairs, heating controls,
hot water service and repairs.

Your local heating expert for
over 15 years.

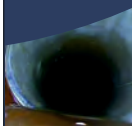
Jo Childs,
8 Black Swan Spinney,
Wansford.

Mob : 07729036942



Perfect Drainage Solutions
Your Drainage Experts (est 2023)

Gutter Cleaning
CCTV Drainage
High Pressure Water Jetting
Drain Blockage Clearance
Tanker Service
Repairs



07817723610

info@pdsLtd.co.uk

www.perfectdrainagesolutions.co.uk

DIRECTORY OF CONTACTS

For all enquiries, contributions and adverts

Craig Bunday	craig@ascotgraphics.co.uk	07771 538661
Ascot accounts	accounts@ascotgraphics.co.uk	01487 801301

Parish Councils

Sutton	Deirdre McCumiskey (Clerk)	01780 782668
Wansford	Marie Lewis (Clerk)	07899 732049
Sibson-cum-Stibbington	Charlotte Newman - sibson.cum.stibbington@gmail.com	
Thornhaugh	Deirdre McCumiskey (Clerk)	01780 782668
Water Newton (Parish Meeting)	Caroline Nathan (Chairman)	07989 362514

City Councillor (Wittering Ward) - Gavin Elsey **07738930599**

Churches

Ministers: Thornhaugh & Wansford 01780 782271
 Stibbington, Sutton, Castor & Water Newton 01733 380900
admin.castor@btconnect.com

Churchwardens:

St Andrew's Thornhaugh:	Stuart Foreman	01780 783220
	Liz Kemp	01780 782333
St Mary's Wansford:	Caroline Ashley	01780 782408
	Alan Jones	01780 783205
St John the Baptist, Stibbington	Charlotte Bradshaw	01780 781805

Friends:

St Mary's & St Andrew's	Caroline Ashley	01780 782408
St Remigius Water Newton	Jack Ward	01733 394646

Other useful contacts

Neighbourhood Policing	101	P'boro City Council	01733 747474
Wansford Surgery	01780 782342	Royal British Legion	01780 782200
(Out of hours	111 option 4)	Stibbington & Wansford WI .	.781733
Wansford Pharmacy	01780 781616	Cricket Club	07860 278800
Communicare	01780 470437	Horticultural Society	01780 592514
H'don District Council	01480 388388	Stibbington Centre	01780 782386

Website www.livingvillagesmagazine.co.uk

©2023 Living Villages Magazine The contents of this magazine may not be copied, reproduced, distributed, republished, downloaded, displayed, posted or transmitted in any form or by any means without the prior written permission of Living Villages Magazine. You may not distribute, display or copy any of the contents of the pages contained in this magazine to third parties without the prior written permission of Living Villages Magazine. All images shown in this magazine are the property of Living Villages Magazine unless otherwise accredited to another. Images may not be used without the prior written permission of Living Villages Magazine or the accredited owner. Unless otherwise specified, the authors of the literary and artistic works in the pages in this magazine have asserted their moral right pursuant to Section 77 of the Copyright Designs and Patents Act 1988 to be identified as the author of those works. If permission is sort and given, it is expected that all articles/images be accredited to either Living Villages Magazine or the author of said articles/images. The views expressed in articles published are strictly those of the writer, and not of Living Villages. Living Villages cannot vouch for products and services advertised, nor accept any liability resulting from the purchasing of product or services, although care is taken to ensure their suitability.

NEED A LOCAL PLUMBER?

PlumbCall Plumbing & heating
Same day / next day service!

- Gas, Electric, Oil, LPG & Solar
- Central heating: Full design & installation
- High efficiency boilers
- Boiler / combi replacements
- Central heating, boiler breakdown & plumbing aftercare
- Underfloor heating specialist
- Power flushing
- Landlord certificates
- Free estimating service
- Annual servicing
- All work guaranteed
- OFTEC Registered

12 year manufacturer's guarantee on selected boilers
(Terms & Conditions apply)

CALL US TODAY!

01733 243 047

or 07860 257 803

E: advice@plumb-call.co.uk

W: www.plumb-call.co.uk

Gas Safe Register No.8494
LPG Registered



*subject to acceptance terms and conditions apply



NORTON RICKETT

Local *Independent* Estate Agents

- Free Market Appraisals
- Probate Valuations (RICS Surveyor)
- Local – Office near Wansford
- Established & Trusted since 2012
- Advertising on Rightmove
- Office Presence in London



www.nortonrickett.co.uk

01780 782 999



Crown

Property Services

- 👑 Electrical & Plumbing
- 👑 Kitchens & Bathrooms
- 👑 Renovations
- 👑 Extensions
- 👑 Windows & Doors
- 👑 Groundworks
- 👑 Landscaping
- 👑 Internal Refurbishment

Old Sulehay Cottages, Sulehay Road, Wansford, PE8 6PA

07766 168659

jonathon@hibbins.me

Village Pizzas

Open Tue – Sat for
Collection / Eat-In at
Leedsgate Farm
4.30pm – 10pm
Or
Delivery 6pm till 10pm

**01780
784587**

View our Menu at
www.villagepizzas.co.uk



Mat based Pilates and Chairiobics
Classes for all levels

MAT BASED PILATES

1 hr classes

Online on Zoom, or in person at
Christie Village Hall (Wansford) and Harringworth Village Hall

Monday, Tuesday, Wednesday and Thursday
£3.50 online / £6 in person



Ease back pain
Strengthen your core, abs and back
Improve sports performance
Exercise without joint pain
Increase your flexibility
Boost brain power and focus

Christie Village Hall:
18:00 Monday /
12:30 Wednesday / 18:00 Thursday
Online:
16:45 Monday / 11:30 Thursday
11:00 & 12:30 Tuesday

Justine

BROMAGE FITNESS

Justine Bromage
Fully Qualified Level 3 Pilates Instructor
Level 3 Personal Trainer
RSA to Music Instructor

justwhim@hotmail.com

07919 106156



Greenwood homecare

Do you need care visits at home?

Greenwood Homecare
provides quality care
in Peterborough and
the surrounding areas

✓ FREE ASSESSMENT

📍 DAY, LIVE-IN OR NIGHT
CARE AVAILABLE

FOR MORE INFORMATION

Visit: Greenwoodhomecare.co.uk

Email: Peterborough@greenwoodhomecare.co.uk

Call: **01733 808531**

