

# *Living Villages*

Image taken by John Measures

*Water Newton Thornhaugh  
Stibbington Sutton Wansford*

*October 2022*

In Memoriam  
HM Queen Elizabeth II 1926 - 2022



# Last Night of the Proms

**Yarwell & Nassington  
Britannia Brass Band**  
Friday 14th October  
Doors open 7:00pm Starts 7:45pm  
Bar and Raffle . Tickets £10

Tickets available from:  
Oundle Box Office 01832 279086,  
Nassington Stores,  
Mould's Butchers, Band Members, 01780 782200

**Proceeds to Nene Valley Care Trust**

## Editorial

Dear readers

“Out of darkness cometh light”.

Not my words, but a phrase that has been around me for as long as I can remember. The passing of our country’s Queen reminds us that there can be sadness and sorrow, but there is always happiness at a wake when those departed are looked back on with fondness. Queen Elizabeth, who served us so unswervingly, would want us to move on, and move on we must. The purpose of a magazine such as this is to reflect on past events and also bring news of future ones; to allow opinion and minutes to be recorded for prosperity. In our small pocket of the United Kingdom I’m sure we will remember our Queen and support our King.

So on to local matters. Wansford Church are planning a **Christmas Community Event** with a difference on Friday 2nd December - where local talent from Wansford and surrounding villages will perform in front of their friends and neighbours. Any type of act from all ages are encouraged to put their names forward. They already have a number of performers lined up but more are required so why not give it a go? Details are on page 12. We also look back on a very successful **Wansford Show** on the centre pages, plus news of your local clubs, parish notices, and worship dates. Our letters page includes an interested poem from Victorian Wansford, unearthed by the Stibbington Centre.

Please continue to support your local magazine with contributions, letters and articles, they are much appreciated. All our contact details, and those of all your local contacts, plus important numbers, are listed inside the back cover.

Best wishes

Craig

### Contents

6	Worship & Benefices
10	Stibbington and Wansford W.I.
14	Wansford Show
18	Parish Council Notices and Minutes
21	Letters
26	Contacts

### Studying for a course?- Did you know you can apply for a grant?

Since the early 1990s the **Reverend Thomas Woolsey’s Charity** has been giving for equipment to all students from Thornhaugh and Wansford for further education, apprenticeship or skills.

The Trustees of the charity will be meeting in September to allocate the grants, so there is plenty of time for any student to apply. Go to the website [thewoolseycharity.co.uk](http://thewoolseycharity.co.uk) to for more information and complete the application form.

Lisa Chambers, Secretary, Rev. Thomas Woolsey’s Charity

## WANSFORD COMMUNITY HALL

Peterborough Road, Wansford

This hall accommodates parties of up to 36 people seated. Ideal for Meetings, Workshops, Aerobics etc

GREAT VALUE AT ONLY £4 per hour  
FOR BOOKINGS TELEPHONE  
John Stannage 07879 485330

Capitol Lettours



Your local property agent  
With over 30 years of  
experience  
Relocation, Lettings and Sales

Please call our office for a  
competitive quote

Peterborough - 01733 553366

(enquiries@capitollettours.com )

[www.capitollettours.com](http://www.capitollettours.com)

## BARKLEYS GARDEN SERVICES

Grass cutting, weeding,  
hedge trimming  
Lady gardener  
available

Bev & Peter  
Ailsworth  
(01733) 380480  
07593721144



[beverlybarkley1@gmail.com](mailto:beverlybarkley1@gmail.com)

## GRIFFIN

Solid Fuel Merchant  
Supplier of Pre Packs

Coal Bunkers Charcoal Compost  
Flo Gas Logs & Sticks Salt

Coal Yard  
Station Road  
Nassington  
01780 782540

Office  
12 Church Hill  
Castor  
01733 380470



Dry carpet cleaning and upholstery  
cleaning services in Peterborough and  
the surrounding areas.

Whether you have an individual chair or  
carpet in a domestic property, or are  
interested in contract carpet cleaning in  
your business, you can benefit from our  
35 years experience.

Telephone: 01832 280429

Mobile: 07951 124374

Email: [info@bcnmulticlean.co.uk](mailto:info@bcnmulticlean.co.uk)

## Ladies

Would you  
like to sing?



is a ladies four-part  
harmony chorus,  
based in Orton Wistow,  
Peterborough.

We rehearse on Tuesday evenings  
from 7.30 - 9.30pm

We are actively seeking both  
new members  
and a new musical director

For more information, please contact  
Deana on 01733 234698 or  
[deanafoot36@yahoo.com](mailto:deanafoot36@yahoo.com)

# NEED A RECOMMENDATION?

The **ONLY** Police Checked recommended register of local approved traders

**FREE** and **EASY** service



**safelocaltrades.com**<sup>®</sup>

Recommended & Approved



Much more than just a recommendation ...

## Serving the PE Postcode community since 2008

Over 70 different trade categories and over 16,900 reviews

Here are some of our members ...

**New Garage Door & Repairs**



**GARAGE DOOR & SHUTTER SERVICES**

[www.garagedoorandshutterservices.co.uk](http://www.garagedoorandshutterservices.co.uk)

Call Dave on

**07709 337647**

**Electrician**

**OLD COURT ELECTRICAL**

[www.oldcourtelectrical.co.uk](http://www.oldcourtelectrical.co.uk)

Call David on

**07973 507420**

**Driveways & Patios**



[www.cambridgeshiredriveways.com](http://www.cambridgeshiredriveways.com)

Call us on

**01733 810063**

**Building & Carpentry Services**



**Steve Deprez & Son**  
Building • Brickwork • Carpentry

Preserving the past. Building the future

[stevedeprezbuilders@gmail.com](mailto:stevedeprezbuilders@gmail.com)

Call Steve on

**07414 292188**

**Garden Makeovers & Hard Landscaping**

**STYLE HOME IMPROVEMENTS LTD**

[www.styleimprovements.com](http://www.styleimprovements.com)

Call Tony on

**07879 881315**

**Carpet & Upholstery Cleaning**

**STAINBUSTERS CARPET CLEANERS PETERBOROUGH**

[www.peterborough-carpetcleaners.co.uk](http://www.peterborough-carpetcleaners.co.uk)

Call Steve on

**07818 058490**

**Plumber (Heating & Gas)**



[www.willowservices.co.uk](http://www.willowservices.co.uk)

Call James on

**01733 590501**

**Thousands of Reviews**



**Keeping it Local**

**In association with ...**



Neighbourhood and Home Watch  
Looking out for the community



To see our full list of members and read all reviews just go to ...



**[www.safelocaltrades.com](http://www.safelocaltrades.com)**

**0800 014 1832**



The safest way to source local traders



**Tear out page and keep**



# WORSHIP DATES

Every Sunday 5.00pm - Zoom 'At Home' Service. Log in and phone details from Rev. Jane [jdtailby@aol.com](mailto:jdtailby@aol.com) 01780 782271

**N.B.**

**WOODNEWTON**

30 <sup>th</sup>	10.00 a.m.	BENEFICE HOLY COMMUNION
------------------	------------	-------------------------

**ALL WELCOME!**

St. Leonard's, Apethorpe

2 <sup>nd</sup>	11.00 a.m.	Holy Communion
16 <sup>th</sup>	11.00 a.m.	Harvest Festival

St. Mary's and All Saints, Nassington

Every Thursday 9.30 a.m. Holy Communion BCP

2 <sup>nd</sup>	8.15 a.m.	Holy Communion BCP
	9.30 a.m.	Family Service and Baptism
9 <sup>th</sup>	9.30 a.m.	Harvest Festival
16 <sup>th</sup>	9.30 a.m.	Holy Communion
23 <sup>rd</sup>	9.30 a.m.	Family Service and Crafts

St. Andrew's, Thornhaugh

2 <sup>nd</sup>	9.30 a.m.	Harvest Festival
16 <sup>th</sup>	9.30 a.m.	Holy Communion

St. Mary's, Wansford

Every Wednesday 10.00 a.m. Morning Prayer

9 <sup>th</sup>	9.30 a.m.	Holy Communion
23 <sup>rd</sup>	9.30 a.m.	Holy Communion

St. Mary's, Woodnewton

2 <sup>nd</sup>	9.30 a.m.	Holy Communion
16 <sup>th</sup>	6.00 p.m.	Harvest Festival
23 <sup>rd</sup>	8.30 a.m.	Holy Communion BCP
30 <sup>th</sup>	10.00 a.m.	BENEFICE HOLY COMMUNION

St. Mary Magdalene's, Yarwell

9 <sup>th</sup>	11.00 a.m.	Harvest Festival
16 <sup>th</sup>	3.00 p.m.	Methodist Service
23 <sup>rd</sup>	11.00 a.m.	Holy Communion

## CASTOR BENEFICE

We are still maintaining the following service pattern every Sunday in each of our **Parish churches** until further notice.

**Marholm** 9.00am - Holy Communion (Morning Prayer on 4th Sunday)

**Castor** 8.00am Holy Communion (said service) 10.15am - Sung Eucharist

**Sutton** 9.00am on 4th Sunday of the month - Holy Communion

Every **Wednesday** morning at **10am** there is a service of Holy Communion at **Castor**.

We still continue to celebrate **Evensong via Zoom at 6pm every Sunday**, if you wish to join us please contact the Benefice office for the Zoom link and access code.

[admin.castor@btconnect.com](mailto:admin.castor@btconnect.com)

The next service at **St. John the Baptist, Stibbington** will take place on **Sunday 9th October at 4pm for Harvest Thanksgiving**, (see below, right) do come along, you will be assured of a very warm welcome. Harvest offerings will be gratefully received and taken to the Peterborough Food Bank. Refreshments will be served after the service.

**David Ridgeway**

## ST. JOHN THE BAPTIST STIBBINGTON

HARVEST THANKSGIVING

**SUNDAY 9th OCTOBER, 4.00 pm**



**REFRESHMENTS WILL BE SERVED  
AFTER THE SERVICE**

**Do come and join us, you will be  
assured of a very warm welcome**

We will holding our Harvest Festival Service at Thornhaugh this year, on 2nd October at 9.30 am. This will be an informal service of celebration and thanksgiving for the agricultural year – all are welcome!

## REFLECTIONS

Although our harvests are gathered in around us from late summer, October feels like a good time for our harvest thanksgivings as we consider “all that is safely gathered in” for another year. As we continue through autumn I think we become more and more aware of the season’s change. From summer into autumn and winter, with the expectation of spring to come, is a change we are familiar with as the year rolls on.

Other changes are less frequent, and maybe more permanent. There are joyful changes in family or personal life, and also those that are difficult to deal with, perhaps a change of circumstance or the loss of someone we love. In our national life, and perhaps personally, we are, I am sure, still reflecting upon the death of our Queen and the feelings and changes that that has brought about. I came across a poem by Philip Larkin about the Queen, written for her Silver Jubilee. Even then, her constancy was notable; no wonder her absence after many more years is so keenly felt.

*In times when nothing stood/ But worsened or grew strange  
There was once constant good:  
She did not change.*

But now even this has changed and perhaps it is not surprising that many have found this an unsettling time.

To see us through any change, I would like to suggest a slight alteration to the last line: **He** did not change. I am not referring here to our new king, Charles III, though it is, of course, right and proper that we should give thanks for his continuing sense of duty and commitment and pray for him in his reign. I have in mind another King, the King we know our late Queen served so faithfully in her commitment to her people, her role and her Christian faith – our Lord God and King. Here is the one true constancy; God’s love and presence with us, through all the changes and chances of life. He did not, and does not, change. We can rely upon him to be with us whatever we may encounter. Let us be encouraged.

With every blessing,

*Rev. Jane*

## St Kyneburgha Building Preservation Trust

The Building Preservation Trust for Castor Church have three talks through the Autumn of this year:

**6th October**  
**27th October**  
**17th November - Joint venture with St Remigius' Friends and Stephen Upex**

Further details and how to book can be found on [www.castorchurchtrust.co.uk](http://www.castorchurchtrust.co.uk)





Your friendly, reliable and honest local heating experts

- ✓ Boiler repairs
- ✓ Emergency callouts
- ✓ Boiler installations
- ✓ Gas
- ✓ Oil
- ✓ LPG

[www.fixfirstheating.co.uk](http://www.fixfirstheating.co.uk)

Call Chris Welch on 01733 315065/07856 518842  
or email [chris@fixfirstheating.co.uk](mailto:chris@fixfirstheating.co.uk)



## New Luxury Care Home



Our family, caring for yours

### Castor Lodge Care Home

At Castor Lodge, our care is the kind we would want all of our loved ones to receive. Offering residential and dementia care, our dedicated team make life comfortable and enjoyable for all our residents, allowing them to live safely and as they choose. Our brand new home is luxurious and beautifully furnished, whilst retaining a warm family atmosphere that makes Castor Lodge feel extra special.

- 68 Spacious en-suite bedrooms
- 6 Premium self-contained suites
- Bistro Café and themed pub
- Sociable lounge and dining areas
- Roof terrace and landscaped gardens
- Hair and pamper salon
- Daily fine dining
- Tailored meaningful activities

To find out more about life at Castor Lodge contact our Customer Relations Manager Laura Mills on 07725 799 217 or email [laura.mills@countrycourtcare.com](mailto:laura.mills@countrycourtcare.com)







## THE ARTS SOCIETY PETERBOROUGH

The Arts Society is a leading arts education organisation that brings people together through a shared curiosity for the arts. Each year The Arts Society Peterborough (TASP) holds nine illustrated talks given by experts in their field on subjects ranging widely, including old Masters, modern sculpture, silver jewellery, the work of David Hockney and music in art. The talks are held at

The Fleet in Fletton Peterborough on the second Thursday of each month except June, July and August. The talks start at 10.45 am but you are welcome to come earlier and meet like-minded people for a chat over a cup of coffee. Non-members are always welcome and the first talk is free, so come and join us!

In addition to the live talks, annual members also receive other benefits. If you wish to find out more about our Society or about becoming a member, please visit our website, [www.the-arts-society-peterborough.org.uk](http://www.the-arts-society-peterborough.org.uk) Our next two talks are:

**13th October 2022**

### **Constantin Brancusi and 20th Century Sculpture, by David Worthington.**

How the son of a peasant from rural Romania became an internationally famous artist and one of the most important sculptures of the 20th Century.

**10th November 2022**

### **The Fascination of Jewellery: Important Women's Collections, by Clare Blatherwick.**

A richly illustrated talk looking at the collections of four very different women, their approaches and reasons behind their collections.

## PIANO LESSONS IN PETERBOROUGH

**Ann Burden ALCM PGCert BSC(Hons)**

**Please contact [annburden684@msn.com](mailto:annburden684@msn.com) or ring 07702363337**

**QUALIFIED EXPERIENCED TEACHER**

No experience is necessary. I can teach you to play for pleasure or towards an exam; I currently work for the London College of Music. Lessons are tailored to your requirements.

If you would like to take up a new hobby or rekindle an old one I would love to hear from you. I am happy to take children from the age of three upwards and there is no age ceiling.

I teach a wide range of instruments primarily piano, keyboard, guitar, violin, clarinet and saxophone. Other instruments are also available so please feel free to contact me with requests. I also teach music theory.

**\*\*Online classes also available\*\***



## STIBBINGTON & WANSFORD WI



### Today's women working for tomorrow's world



Visitors to St Mary's Church Wansford during September admired the tribute to Her Majesty the Queen, on her passing. This was created by Christine Turner (Chair) and Sue Joyner (secretary). The more observant of you will see a WI cup and saucer. This was placed within the display because Her Majesty was a loyal and dedicated member of the WI for 80 years. She never failed to show her support for us throughout her time as the Queen, by attending her local branch at Sandringham or at national level. As a branch we wished to offer our condolences to the Royal Family through this tribute.

Many thanks to those, both young and old that visited our Children's tombola at The Wansford Show. It was a great success; we were able to raise £180 for Sue Ryder Thorpe Hall. This is our chosen charity this year, in memory of Jill Rastall a longstanding member.

Our September speaker was Heidi Field, Waste Minimisation Officer at Huntingdon district council. She gave a well informed, engaging talk on recycling and what we can do to reduce the amount of waste that ends up in landfill. Although the village has two different district councils collecting our waste, it was good to find out that all our recycling waste ends up at Waterbridge recycling centre. The blue bin (green for those north of the river) will accept:

**Glass**

**Clean foil**

**Plastic bottles**

**Milk and juice cartons**

**Newspaper/ cardboard**

**Cans/ tins/ aerosols**

**Plastic tubs, pots and containers**

**Paper and magazines**

**Soft plastic wrappers**

A bigger selection than we realised, a number of us will be relooking at what ends up in our recycling bins. Whereas those north of the river have a separate collection for food waste, Heidi explained that the green garden waste bins take not only garden waste but all types of food waste, and shredded paper, which is then composted once it reaches Waterbridge. A really informative talk and gave us a fresh incentive to reduce our waste by recycling as much as possible.

Saturday 8th October, will be our annual Macmillan Coffee morning, please come along for a cup of coffee and a slice of cake.

Now that we are meeting in St Mary's Church visitors are most welcome to our monthly meetings to hear our visiting speakers. Please see below for our upcoming events:

Saturday 8th October, Macmillan coffee morning at St Mary's Church 10.30 – 12 noon.

Tuesday 11th October, 2pm W.I. meeting Peterborough Cathedral – Highlights of the Cathedral tour.

Tuesday 4th October, 2-4pm Coffee & Craft club, at St Mary's Church.

Tuesday 18th October, 2-4pm Coffee & Craft club, at St Mary's Church.

Thursday 24th Nov, 7.30pm Book Club meeting, at The Cross Keys Wansford

Both the Coffee & Craft club, and Book Club are open to all, not just for WI members only, and we look forward to others joining us.

Rhona Punter

01780 592514

Stibbington & Wansford WI

# PAWS AND CLAWS

★ ★ ★ ★ ★

## Boarding Cattery

*"Cats have a 'tail' to tell when they've 'paws'd' awhile at Wansford's 5 Star Purr Palace"*

**Tel 01780 782174**  
**e-mail**  
[pawsandclaws@hotmail.com](mailto:pawsandclaws@hotmail.com)



Working with Peterborough Cat Rescue to rehome cats and kittens seeking loving homes and laps on which to purr

Peterborough City Council & Rutland County Council  
 Licence Number: 078015

## Woodland Timber Products

Fencing, Play Houses, Gates  
 Pet Housing, Sheds




**01780  
783983**

Unit 4, Leedsgate Farm Business Park,  
 Kings Cliffe Road, Wansford PE8 6NX.  
 07748 787360  
[woodlandtimber.products@yahoo.com](mailto:woodlandtimber.products@yahoo.com)

**Local Housekeeper / Cleaning Lady**

Long term customer references ✓  
 Exceptionally high standards ✓  
 DBS registered ✓  
 Ofsted registered Nanny / Housekeeper ✓

**Telephone: 07741 468392**





Nail Surgery \* Corns, Calluses, Hard Skin \* Cracked Heels  
 Biomechanics & Orthotics \* Diabetic Foot Care \* Verrucae  
 Cryoaesthetics for Skin Lesions \* WP Nail Reconstruction

**Ear Ache?**  
**Hearing Loss?**  
**Blocked Ears?**

*It could just be wax!*

Safe, Gentle and Effective Ear Wax Microsuction and  
 Hearing Screening Now Available

**01780 783982**  
 Home Visits Available






# OVER 50 YEARS EXPERIENCE

Car buying as it should be; simplistic, with no admin fees, no pressure and a wealth of knowledge to help you find your dream car.

**Great part exchange prices given**

**Finance from as low as 6.9%**

**[www.heartysofpeterborough.co.uk](http://www.heartysofpeterborough.co.uk)**

**01733 560605**

**[sales@heartysofpeterborough.co.uk](mailto:sales@heartysofpeterborough.co.uk)**



**HEARTYS**  
*of Peterborough*



## WE'VE GOT TALENT!

### Wansford Church Village Christmas Event

**Friday 2nd December at 7.30 pm  
in Wansford Church.**

We're planning a Christmas Show - would you like to participate and entertain your local community?

Maybe play an instrument, sing, tell a story, joke or poem – how about a magic trick, or something we haven't even thought of!!

Young people are especially welcome.

There will be a bar to help provide encouragement to performers and audience.

Admission will be free with all welcome.

However a donation towards the upkeep of the church building would be appreciated.

If you would like to perform at this fun evening please contact Alan at either [akjones1@btinternet.com](mailto:akjones1@btinternet.com) or 07720 696 333



Kings Lynn: 01553 761 252  
Cambridge: 01223 852 191  
Peterborough: 01733 646 111

**Credence Law**

**Criminal Law  
Specialists**

**Motoring  
Law**

**Police Interviews  
Magistrates Court  
Representation**

[www.credencelaw.co.uk](http://www.credencelaw.co.uk)



Authorised and regulated by  
the Solicitor Regulatory Authority  
SRA Number 667958



### FOOTPATHS

If walking the local footpaths is something you like to do would you be interested in joining like minded people to help monitor our local rights of way? If interested, please drop me a line [linfree52@icloud.com](mailto:linfree52@icloud.com) or 07876341514 and I can explain in more detail.

Thanks in advance

## PETER RIDDINGTON LANDSCAPING

We supply and install Patios & Pathways, Decking, Stone Walls and Fencing, We plant Trees, Shrubs Hedges and Flowers, and offer a complete Garden Maintenance and Improvement Service. Garden design service provided

Contact Peter Riddington today for a free quotation

4 LOCKS GREEN, YARWELL, PETERBOROUGH PE8 6PY  
Telephone: 01780 783004 Mobile: 07860 962068  
Email: [peter@peterriddington.co.uk](mailto:peter@peterriddington.co.uk)





### ***Celebrating the best of our beautiful village life***

On a gloriously sunny August Bank Holiday Saturday 1,000 visitors attended the 76th Wansford Show. The words '**The Best Wansford Show**' were spoken by our Master of Ceremonies, Jim Boulton, as he closed the Show and repeated often in the great feedback we have received.

This is our second successful year at our new location of Bradshaw's Field. A standout comment from a classic car owner '..... **from a visitor's point of view it was very well organised and all the stewards from the guys on the gate through to the infield helpers were so very helpful and polite. Well done to all.**' This makes me so proud that Wansford is very welcoming and friendly.

The money raised allows the Wansford Show to support both Sue Ryder and local sports clubs and organisations. In total the Show made a profit of approx. £2,000 (tbc) and will be giving a significant donation (next month) to Sue Ryder. In addition, we are matching the charity donations of WI and Friends of St Mary's.

The family entertainment was greatly enjoyed with live & local music from Wansford Ukulele Folk, Yarwell & Nassington Britannia Brass Band and jazz from the Herbie Lamb Quartet. Kids were entertained all day by 'non-stop kids' magician and the 60 classic vehicles provided great interest. The 35 Stalls selling food, beer, gin, burgers, tea, cake, tombola, plants and so many local crafts were really appreciated for their local nature and certainly will be a feature in future years.

The tug of war again added great fun and excitement. The rope did not break and Wansford North retained the trophy. The new award for 'village performance' must go to the 8 planes of the Wansford 'Dam Busters' who re-enacted their own personal flypast and dogfight – True fun – and a novel replacement for the RAF Hurricane which broke down and could not attend.

In the Marquee, Gardeners Question Time had a surprise guest, Bunny Guinness, panellist from the BBC radio 4 programme of the same name. Your exhibits on display in the Marquee showed just how much talent we have in the village. The judges all remarked that the standard was high and well done to the winners. Entrants were a bit down from previous year, perhaps due to the drought and less 'covid lock-down' time. Next year, please make room in your diary to enter - Our visitors really are interested to see exhibits.

We again want to give great thanks for the hard work of our committee, our volunteers, our sponsors (Bradshaw's, The Cross Keys, The Paper Mills, The Haycock Manor, Bearyfields, Instep Foot Clinic and Hearty's of Peterborough), The Cricket Club, WI, St Mary's Church and our PCC. **Finally, our village have again pulled off a remarkable Show. Congratulations for a great team effort.**

Best Wishes. **Gary Punter.**  
Chairman of Wansford Horticultural & Craft Society



**Our sponsor, Sue Arnold, presents trophies to Lucy Hunt and Alan Bell**



**'Best in Show'  
And winner of  
Len Hall Trophy  
- Adrian Duffin**

# The Pictures tell the story of the Show



**Dam Buster Flypast**  
(see the video at our  
Wansford Show Facebook page)

**Meeting friends and enjoying the sunshine**

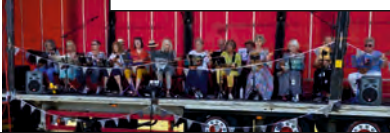


**Tug of War from the South...**

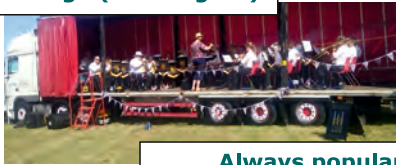


**...and the North**

**Note our new music stage  
provided by Mark Hull Haulage (Stibbington)**



**Wansford Ukulele Folk  
gave us a lively start to the Show**



**Always popular  
sound of brass from  
the Yarwell & Nassington  
Britannia Brass Band**



**Peter Garner's 1952 Bristol**



**Our Children's entertainer  
proved popular**



**Jacqui singing  
Jazz at the end  
of the afternoon**

# Augean Community Fund

## August 2022

The **Augean Community Fund** uses monies provided by Augean under the Landfill Communities Fund.

The company's donations relate to its two landfill operations located at Thornhaugh near Peterborough, and King's Cliffe in Northamptonshire.

Recommendations on all grants from the Fund are made by King's Cliffe Environmental Association (KCEA) and Thornhaugh Environmental Association (TEA).

These two committees comprise volunteers from the villages of King's Cliffe, Thornhaugh and nearby, who are best able to represent local community priorities.

### Application Closing Dates

There are usually two funding rounds each year, the next two closing dates are:

**Wednesday 16 November 2022**  
decisions by End January 2023

**Wednesday 31 May 2023**  
decisions by Early August 2023



### Who can apply?

Groups with projects that are located within 10 miles of the King's Cliffe landfill site or the Thornhaugh landfill site may apply for grants. Priority will be given to applications received for projects located within 5 miles of Augean's Thornhaugh and King's Cliffe landfill sites.

### What can you apply for?

Grants are available for capital improvement works to public amenity projects.

Examples may include:

- Village halls
- Community centres
- Sports fields
- Nature reserves
- Public playgrounds
- Sports facilities
- Village greens
- Cycle paths
- Country parks

You can apply for grants of between £5,000 and £50,000.

Projects must be available and open to the general public as defined by ENTRUST (the Landfill Communities Fund regulator), as a minimum, for 4 evenings a weeks, or 2 days a week, or 104 days a year.

### Where can you find out more?

For more information about the Fund and how to apply, please visit GrantScape's website.

If you have a project idea that you would like to discuss before you apply, please contact the GrantScape team on:

**Telephone: 01908 247630**

**Email: [info@grantscape.org.uk](mailto:info@grantscape.org.uk)**

**[www.grantscape.org.uk](http://www.grantscape.org.uk)**





## Historic Times, Terms and Titles

The sad death of our dear Queen, HM Queen Elizabeth II, has resurrected terms and titles from our rich heritage of words that are not often used: Proclamation of Accession, High Sheriffs and Lord Lieutenants – what are they, who are they, and why do we have them? The announcement of a new monarch has not been made for a very long time because our Queen reigned for 70 years and so, for the vast majority of the British population, this is the first memorable time that we have witnessed the change of a Monarch and, in this case, from a Queen to a King.

The execution of Mary, Queen of Scots in our neighbouring village of Fotheringhay bought the Tudor dynasty only 16 additional years before the death of Queen Elizabeth I when Mary's son became King James I of England in 1603 whilst he was already King James VI of Scotland. His accession brought together the crowns of Scotland and England and the beginning of the Stuart dynasty. From Saxon times the accession of Kings and Queens had been self-proclaimed either through their bloodline or the sword. At the time of Queen Elizabeth I's death her son, King James VI of Scotland was living in Edinburgh which created a need to proclaim James as the rightful King of England in London. This brought about the creation of an Accession Council made up of members of the late monarch's Privy Council along with the great and the good. And from that time on an Accession Council has assembled to conduct a formal Proclamation of Accession ceremony for the new Sovereign.



**Mrs Jennifer Crompton,  
High Sheriff of Cambridgeshire**

The Accession Council met at St James Palace on 10 September 2022 to proclaim our new Sovereign, King Charles III and an order was made requiring High Sheriffs to proclaim the accession of the King in their areas of jurisdiction. The High Sheriff of Cambridgeshire, Mrs Jennifer Crompton, along with the Lord Lieutenant, Mrs Julie Spence, made their proclamations in both Cambridge and Peterborough the following day.

A High Sheriff is a ceremonial officer appointed for one year for each county of England, Wales and Northern Ireland. The Office of High Sheriff is the oldest Royal appointment which is unpaid and non-political and their history and tradition go back to Saxon times when the 'Shire Reeve' was responsible to the king for the maintenance of law and order within the shire or county, and for the collection and return of taxes due to the Crown. Whilst the duties of the role have evolved over time, supporting the Crown and the judiciary remain central elements of the role today. In addition, High Sheriffs actively lend support and encouragement to crime prevention agencies, the emergency services and to the voluntary sector. In Scotland the Sheriff is a judicial office holder in the Sheriff courts, and they are members of the judiciary of Scotland and so the role is rather different to the High Sheriffs of England, Wales and Northern Ireland.

The other role that has been prominent in the recent Proclamation of Accession ceremonies at county level is that of Lord Lieutenant and has accompanied the High Sheriff. The office of Lord Lieutenant is of military origin and dates back to the reign of Henry VIII when the Sovereign made the holder responsible for the maintenance of order and for all military measures necessary. The Lieutenants were generally noblemen and William Parr, Marquess of Northampton, brother of Queen Katherine, Henry VIII's last wife, was appointed as the first Lord Lieutenant in the county of Northamptonshire in 1549. He was also appointed to serve in the counties of Cambridgeshire, Huntingdonshire, Bedfordshire and Norfolk. There are Lord Lieutenants in each county of the United Kingdom.

Wansford marked the historic occasion of our dear Queen's death at a communal ceremony that took place during the evening on the day of her funeral. Cllr John Stannage, Chairman of Wansford Parish Council, read out a tribute to the Queen which acknowledged and thanked her devotion to duty and astonishing work ethic. He welcomed the new King, King Charles III and the National Anthem was sung by all present. The people of Wansford stood by a burning beacon and raised their glasses to the new King and bid him Three Cheers! Long Live the King!

**Marie Lewis, Clerk to Wansford Parish Council**

## SIBSON-CUM-STIBBINGTON PARISH COUNCIL

The Parish Council met at The Christie Hall on Thursday 22nd September. Details will be included in next month's edition of Living Villages Magazine.

**Next meeting** scheduled for Thursday 3rd November 2022 in the Christie Hall commencing at 7 p.m.

## THORNHAUGH PARISH COUNCIL

The Annual General Meeting of Thornhaugh Parish Council took place on 18th July 2022 in St Andrew's Church. It was chaired by Chris Smith and present were Yana Clipsham, Neil Croft-Taylor, Louise Molesworth and Camilla Plumb, also present were four members of the public and Deirdre McCumiskey, Parish Clerk.

There were no apologies for absence.

Chris Smith gave a short introduction to the meeting:- "Welcome to the new Parish Council and our thanks to those who have left the Council (Ashleigh Kewney, Martin Lewis and Adrian Rodgers) Two of us continue from previous years (Louise and myself) and I am pleased to -welcome three new Councillors – Yana Clipsham, Neil Croft-Taylor and Camilla Plumb. Thank you for your interest in becoming part of the Council. Short biographies of our new Councillors will be included in the Minutes of the Meeting".

The following elections took place:- Chairman – Chris Smith (who is happy to continue pro-term but would like to pass over to someone else in due course); Vice Chairman – Louise Molesworth; Thornhaugh & Wansford Parish Burial Ground Committee – Louise Molesworth and Robert Reeve; Augean Community Liaison Committee – Martin Witherington (TBC); Christie Hall Management Committee – Neil Croft-Taylor and Finance Officer – Yana Clipsham

**Defibrillator** - Louise Molesworth will arrange the training in the Christie Hall. She and Adrian Rodgers continue to undertake weekly checks on it.

**Queen's Platinum Jubilee Event Report** - this was a successful event despite the cold, wet weather. Thanks are expressed to everyone who contributed to the day. A short article was put into Living Villages and the Memorial Book is still a work in progress – please let Hannah Joyce or Nicky Rogers have your input. The Chairman has a memory stick of the photos taken by Alan Frost. The event has cost £573.75 plus VAT to date and thanks are expressed to the anonymous donor who donated £250 which paid for the Pimms. The site for the Jubilee Tree has not been confirmed but the tree will be paid for out of the original budget. If anyone wants a copy of any of the photos taken by Alan Frost, they should contact him.

**Memorial for Hubert Warren** - Louise Molesworth reported that at the Thornhaugh & Wansford Parish Councils' Burial Ground Committee Meeting, a discussion had taken place as to erecting an ironwork archway over the gate leading to the church path and incorporating 'H' and 'W' in it to commemorate the long service of Hubert Warren to the village. Simon Hurn would be able to construct this. Robert Reeve has a design of a mock-up of the arch at St Michael & All Angels' Church at Sutton superimposed on the wall at St Andrew's Church, Thornhaugh.

**Passing Places on Russell Hill** - the Chairman has not received a response from PCC Highways Department.

**Hanging Baskets** - there are no summer hanging baskets this year due to Openreach not allowing baskets to be hung from the telephone poles.

**Planning Applications 21/01225** - Construction of a first-floor loft conversion above an existing garage at St Medard House, Russell Hill, Thornhaugh – Permitted; 21/01991 - Proposed alterations to existing Outbuildings including external domestic spiral stairs to allow access from home office to garden area at Home Farm House, Leicester Road Thornhaugh – Permitted; 22/00390 - Remove fir tree in front garden at Hawthornes, 11 Russell Hill, Thornhaugh – Permitted; 22/00431 - Change of use from Agricultural Land (Sui Generis) to Residential Garden (Use Class C3) retrospective at 16 Russell Hill, Thornhaugh – Objection submitted. Awaiting decision; 22/00506 - Change of use from agricultural land to garden land at Croft Farm, Meadow Lane, Thornhaugh – Objection submitted. Awaiting decision; 22/00559 - Erection of eight office pods (Use Class E) with associated parking involving the removal of existing semi-permanent marquee (Sui Generis - wedding venue) - Objection submitted. Awaiting decision and 22/00570 - Construction of open fronted outbuilding at Manor Farm, Russell Hill, Thornhaugh – Objection submitted. Application withdrawn. Peter Sharpley confirmed that he had withdrawn the application and the cleared land adjacent to the wall would be grassed over and trees planted. He would be putting in a second planning application in due course to erect a farm building somewhere else in the farmyard. He confirmed that he would be speaking directly to any resident who might be affected by the new application.

**Bank Accounts** - Yana Clipsham, Neil Croft-Taylor and Camilla Plumb will take the Barclays Bank Forms to Barclays Bank to get their personal information verified so that they can become signatories to the bank accounts.

**Annual Audit 2021-2022** - the Independent Internal Audit Report has been completed and it was noted that all control tests had been satisfactorily met by the Council's records and procedures; the Certificate of Exemption was approved and signed by the Chairman and the Responsible Financial Officer; Section 1 Annual Governance Statement - was examined, approved and signed by the Chairman and the Responsible Finance Officer; Section 2 Annual Return Accounting Statements for Year Ending 31st March 2022 were examined, approved and signed by the Chairman and the Responsible Financial Officer and the Annual Return will be e-mailed to the PKF Accountants by the required date.

**Website Update** - it was agreed that the Website looks old-fashioned and is not particularly easy to navigate. It was agreed to obtain a quote for updating it.

**Flagpole** - the acquisition of a flagpole was discussed. A possible siting could be at Home Farm.

**Social Events** - Neil Croft-Taylor and Camilla Plumb agreed to look at future Social Events in the village. The next one is likely to be the switch on of the lights on the Christmas Tree on 3rd December 2022 if a September event is thought to be not appropriate. It was agreed to book the Wansford Ukulele Band for the Christmas event.

**The next Thornhaugh Parish Council Meeting** will take place at 7.00 pm on 21st November 2022 in St Andrew's Church.



*Beautiful curtains, blinds and soft furnishings  
designed and created to compliment your  
home.*

*For a free home consultation  
and quote call 07957686595*

**Georgina's**  
*Curtains & Keepsakes*

[www.georginascurtainsandkeepsakes.com](http://www.georginascurtainsandkeepsakes.com)



\*\*\*\*\*

**MOBILE HAIRDRESSING**

Ladies & gents hairdresser with over 30 years experience.

If you are housebound, have reduced mobility, no transport or simply prefer the convenience of having your hair done at home, I have daytime appointments available. Fully insured. Competitive prices.

**Please call Tracey on 01780 782467**

\*\*\*\*\*



**THE CHRISTIE HALL**  
Elton Road, Wansford  
(registered charity no 1033998)

---

A well-equipped hall with large kitchen and parking.  
**Available for parties, receptions, meetings, activity groups and most types of private functions**  
For more information and details on how to book visit our website  
[www.christiehall.co.uk](http://www.christiehall.co.uk)



**THE CARRIAGE**  
Exclusive Fitness Club  
**JOIN NOW**

**1-2-1 Personal Training sessions and Group Workouts, in a stunning & unique environment.**



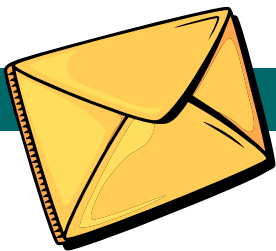
Wittering Grange, Wansford, Peterborough, PE8 8NR  
07508 878121  
[www.thecarriagefitness.co.uk](http://www.thecarriagefitness.co.uk)




Oil boiler servicing and repairs, heating controls, hot water service and repairs.

Your local heating expert for over 15 years.

Jo Childs,  
8 Black Swan Spinney,  
Wansford.  
**Mob : 07729036942**



## LETTERS TO THE EDITOR

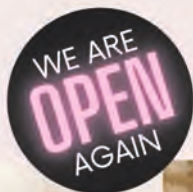
email [craig@ascotgraphics.co.uk](mailto:craig@ascotgraphics.co.uk)

Dear Craig,

I live in Wansford and have the privilege of working as a nurse at Thorpe Hall Hospice in Peterborough. I have entered the Great Eastern Run on 16th October to raise money for Sue Ryder as I see first hand the fantastic work they do and how important fundraising is for the charity. If you see me running around the villages in my Sue Ryder t-shirt please give me a wave! Please support me by making a donation online or by popping some change in the collection tin on the counter at the village shop in Wansford.

[justgiving.com/becky-eames](https://justgiving.com/becky-eames)

Thank you,  
Becky Eames, Wansford.



*polished*

NAILS & BEAUTY



Award winning nail and beauty professional, providing luxurious treatments from a relaxed setting

#### TREATMENTS AVAILABLE

- Manicures & pedicures
- Gel polish
- Footlogix medi-pedi
- Nail rehabilitation
- Bespoke nail art
- Nail extensions
- Eyelash extensions
- Facial waxing
- Tinting
- LVL (lash lift & tint)
- IBX nail strengthening & repairing



phone 07811 057715

email [hello@polished-nailsandbeauty.co.uk](mailto:hello@polished-nailsandbeauty.co.uk)

website [www.polished-nailsandbeauty.co.uk](http://www.polished-nailsandbeauty.co.uk)

Find us on Facebook @polishednailsandbeautyuk

THE HAYCOCK MANOR HOTEL, WANSFORD, PETERBOROUGH, PE8 6JA

## LETTERS.....

Dear Craig,

I am a teacher at the Stibbington Centre and during a recent clearing of drawers and cupboards, this poem came to light.

I thought your history loving readers may enjoy the poem in particular. It would be lovely to share this work with our visiting school children who are learning about life in Victorian times.

I do hope your readers enjoy the poem. I must check our school log book details and see if I can find the poet Frances Mould. Perhaps there are even still family members in the village.

Yours sincerely,

Veronica Latham

Specialist Teacher  
Stibbington Centre

### TIMES PAST AT WINSFORD.

Wansford of many years ago  
Not many people now would know,  
To go to town in that far day  
You must get to the station 9 miles away,  
But there in the village was so much to buy  
That to make the journey you'd rarely try.

Mr. Wingrove plied his trade  
And as a butcher his living made.  
Down a step in his shop you found  
Plenty of room to look around.  
The sawn through trunk of a very large tree  
Wide and solid, a wonder to see  
Stood in the middle of his shop  
Making a unique chopping block.  
Carcase meat into joints he'd chop  
Laid on this sound old tree trunk block.  
Famous for pies and sausage meat  
His home-made fare was good to eat.

Mr. Kingston in his bakehouse there  
Sold home-made bread beyond compare,  
Cake and Scones in good supply  
You could not resist when asked to buy.  
Hot cross buns on Good Friday morning  
Were brought to your door as day was dawning.  
Cakes were baked for special occasions  
Iced with tasteful decorations.  
You would be lucky now to meet  
Food as wholesome and good to eat.

You could buy your stamps and licenses  
From the front of his house, in the Post Office,  
Wires that all the district had  
Were delivered by David the telegraph lad.

Down by the Nene's slow flowing waters  
The firm of Gilberts had their quarters,  
Builders, carpenters and decorators  
As well as funeral undertakers.  
All their workmen you would find  
Good and reliable of their kind,  
Known and depended on all around  
They would build you a house, or repair your own.

At the corner of the village square  
A roomy general store stood there  
Grocer and Draper said the sign  
In letters of a bold design.  
All you obtained from Mr. Mould  
Was of the best that could be sold,  
He had such a large and varied stock  
You could buy almost everything from his shop.  
Each day the horse and cart set out  
To farms and villages round about  
Delivering goods to people's homes  
Who lived too far to fetch their own.

Along the street on the left hand side  
Was another grocery enterprise.  
Mr. Howard would serve you will  
If around there you happened to dwell.

Making clothes of a perfect fit,  
Mr. Gibson would cross-legged sit.  
Fishing, shooting and riding men  
From all around had ordered them,  
With the ladies too he had found favour  
And they bought their suits from this expert tailor.

Mr. Strickson and his son together  
 As saddlers did fine work in leather.  
 The farmers knew from all around  
 They would keep the harness safe and sound.  
 He and his wife were often on call  
 For balls that were held in manor and hall.  
 Music they made that was quite entrancing  
 For all the ladies and gentlemen dancing.

Mr. Collier in blacksmith's jobs  
 Kept all the horses soundly shod.  
 Till later, when he'd shrewdly seen  
 The need for horses would be less keen,  
 His sons, coming after him changed their trade,  
 And as motor mechanics their fortune made.

Mr. Dixon went on his round  
 Delivering letters safe and sound,  
 Anyone feeling they wanted a breather  
 Could hire Mr. Dixon and his four-wheeler.  
 He and Mr. Chambers together  
 Were the finest cobblers I ever knew.  
 Always using the best of leather,  
 They would make your shoes as good as new.

Old Mrs. Ford had her abode  
 Under the arch on the London Road,  
 In a chenille net she hid her hair  
 She and her husband a well-known pair.  
 A barrel of herrings she had each week,  
 You could buy from her house fish tasty and sweet.  
 From old Mr. Ford, so cheery within  
 You could always get tuppence for a rabbit skin.

The Haycock stood a large Hotel,  
 Its host was Mr. Percival.  
 Used by stage coaches in ancient day  
 As from London to York they made their way.  
 You could quench your thirst after days of toil  
 At the Paper Mills Inn kept by Mr. Boyall,  
 While Mr. Kent at the old Cross Keyes  
 Was there to supply the drinker's need.

Up the bridge hill and over the top  
 was Mr. Haseldine's stationer's shop.  
 From there you could buy your stationery,  
 or take a book from his library.

A large inn stood at the cross-road brink  
 Where people could gather and take their drink.  
 Mr. Quincey was landlord there  
 And the painted sign a Mermaid fair.  
 No one had far to go to seek  
 All they wanted in good fresh meat  
 For a butcher there had his abode  
 Mr. Stokes, on the Stamford Road.

For people who lived that side of the river  
 To take the air in summer weather,  
 Mrs. Brice's four wheeler kept for pleasure  
 would fill for them the hours of leisure.  
 In the pretty cottage near the Church  
 Miss Mary Smith had lived since birth,  
 You could go to her and choose your pattern  
 She'd make you clothes of the latest fashion.

Changes come throughout each year,  
 Now none of these good folk are here,  
 If they came back they'd hardly know  
 The place they lived in long ago.

Frances G. Mould. - formerly of Wansford.



Dear Craig

After replacing the pews in  
 Wansford Church with chairs we  
 have one remaining pew now  
 surplus to requirements.

If any reader is looking for an  
 interesting piece of furniture for  
 either home or business use it  
 could be ideal - it is 13feet long in  
 good condition made of pine with a  
 gloss finish.

Cushions to suit are also available.  
 Local delivery can be arranged.

For further details contact Alan  
 Jones at [akjones1@btinternet.com](mailto:akjones1@btinternet.com)  
 or 01780 783205.

Many thanks  
 Alan



# Just ask

Making the right decisions can be stressful at the best of times, but we are here to help. Whatever's on your mind, just ask.

**TOBIAS COLTON** BA(Hons) DipPFS  
Principal  
**TOBIAS COLTON WEALTH MANAGEMENT**  
Associate Partner Practice of St. James's Place Wealth Management  
07468 428 380  
tobias.colton@sjpp.co.uk  
www.tobiascoltonwealthmanagement.co.uk



The Partner Practice is an Appointed Representative of and represents only St. James's Place Wealth Management plc (which is authorised and regulated by the Financial Conduct Authority) for the purpose of advising solely on the group's wealth management products and services, more details of which are set out on the group's website [www.sjpp.co.uk/products](http://www.sjpp.co.uk/products).  
The 'St. James's Place Partnership' and the titles 'Partner' and 'Partner Practice' are marketing terms used to describe St. James's Place representatives.

SJPP2026 V1 (04/20)

# HOME

MORTGAGE SOLUTIONS LTD

## HOW WE ARE DIFFERENT?

	Confirm your budget	Explain the house buying process	Find the perfect house	Save you as much money as possible	Search the whole market for the right mortgage	Deal with solicitors paperwork	Take care of all your protection needs	Be there every step of the way
US	✓	✓	✓	✓	✓	✓	✓	✓
OTHERS	✓	✓	✗	✗	✗	✗	✗	✗

## Our team are happy to help

EARN  
£50

**REFER A FRIEND:**  
Every time you refer friends or family to see us, benefit from our £50 'Refer a Friend' scheme when they complete!

\*Terms & conditions apply.



KATE



LAURA



HAYLEY

# THERE FOR YOU EVERY STEP OF THE WAY

01205 631330 [kate@homemortgagesolutions.uk](mailto:kate@homemortgagesolutions.uk) [www.homemortgagesolutions.uk](http://www.homemortgagesolutions.uk)

\*Your home may be repossessed if you do not keep up repayments on your mortgage





## FENLAND DISTRICT BROKERS LTD

Your business needs protection at so many levels.

We can advise on full Insurance Coverage.  
Local, reliable and experienced.



**FOR ALL YOUR BUSINESS INSURANCE NEEDS**

0808 175 3050 | 22 Cecil Road, Peterborough | [www.fdbltd.co.uk](http://www.fdbltd.co.uk)

Fenland District Brokers Ltd are an Appointed Representative of Ten Insurance Service Ltd which is authorised and regulated by Financial Conduct Authority.

## Suk's Sensations

**Learn to cook delicious authentic Indian curries  
using fresh ingredients and real Indian spices**

“Hi, I’m Suk and I will be providing 2 hour demonstration sessions at my home in Sutton for small groups focussing on different recipes in each session. It will be good opportunity to learn new skills and meet new people in a relaxed informal atmosphere. You will also learn how to cook delicious and cost effective vegan and vegetarian recipes, allowing you to feed your family for less! I will be happy to include any special requests and favourite recipes and will provide a small takeaway box for each person after each session. Refreshments will also be included during each session”

**Impress your family and friends with your own home cooked curries!**

Please call Suk on **07778 517045** for bookings and further enquires

# DIRECTORY OF CONTACTS

## For all enquiries, contributions and adverts

<b>Craig Bunday</b>	craig@ascotgraphics.co.uk	07771 538661
<b>Ascot accounts</b>	accounts@ascotgraphics.co.uk	01487 801301

### Parish Councils

Sutton	Deirdre McCumiskey (Clerk)	01780 782668
Wansford	Marie Lewis (Clerk)	07899 732049
Sibson-cum-Stibbington	Wendy Gray (Clerk)	01778 441312
Thornhaugh	Deirdre McCumiskey (Clerk)	01780 782668
Water Newton (Parish Meeting)	Caroline Nathan (Chairman)	07989 362514

### City Councillor ( Wittering Ward) - Gavin Elsey

**07738930599**

### Churches

<b>Ministers:</b> Thornhaugh & Wansford		01780 782271
Stibbington, Sutton, Castor & Water Newton		01733 380900
	<a href="mailto:admin.castor@btconnect.com">admin.castor@btconnect.com</a>	

### Churchwardens:

St Andrew's Thornhaugh:	Stuart Foreman	01780 783220
	Liz Kemp	01780 782333
St Mary's Wansford:	Caroline Ashley	01780 782408
	Alan Jones	01780 783205
St John the Baptist, Stibbington	Charlotte Bradshaw	01780 781805

### Friends:

St Mary's & St Andrew's	Caroline Ashley	01780 782408
St Remigius Water Newton	Tony Capon	01733 237500

### Other useful contacts

Neighbourhood Policing 101		P'boro City Council	01733 747474
Wansford Surgery	01780 782342	Royal British Legion	01780 782200
(Out of hours	111 option 4)	Stibbington & Wansford WI .	.781733
Wansford Pharmacy	01780 781616	Cricket Club	07860 278800
Communicare	01780 470437	Horticultural Society	01780 592514
H'don District Council	01480 388388	Stibbington Centre	01780 782386

### Website

[www.livingvillagesmagazine.co.uk](http://www.livingvillagesmagazine.co.uk)

©2022 Living Villages Magazine The contents of this magazine may not be copied, reproduced, distributed, republished, downloaded, displayed, posted or transmitted in any form or by any means without the prior written permission of Living Villages Magazine. You may not distribute, display or copy any of the contents of the pages contained in this magazine to third parties without the prior written permission of Living Villages Magazine. All images shown in this magazine are the property of Living Villages Magazine unless otherwise accredited to another. Images may not be used without the prior written permission of Living Villages Magazine or the accredited owner. Unless otherwise specified, the authors of the literary and artistic works in the pages in this magazine have asserted their moral right pursuant to Section 77 of the Copyright Designs and Patents Act 1988 to be identified as the author of those works. If permission is sort and given, it is expected that all articles/images be accredited to either Living Villages Magazine or the author of said articles/images. The views expressed in articles published are strictly those of the writer, and not of Living Villages. Living Villages cannot vouch for products and services advertised, nor accept any liability resulting from the purchasing of product/sor services, although care is taken to ensure their suitability.

## NEED A LOCAL PLUMBER?

**PlumbCall** Plumbing & heating  
Same day / next day service!

- Gas, Electric, Oil, LPG & Solar
- Central heating: Full design & installation
- High efficiency boilers
- Boiler / combi replacements
- Central heating, boiler breakdown & plumbing aftercare
- Underfloor heating specialist
- Power flushing
- Landlord certificates
- Free estimating service
- Annual servicing
- All work guaranteed
- OFTEC Registered

**12 year manufacturer's guarantee on selected boilers**  
(Terms & Conditions apply)

**CALL US TODAY!**

**01733 243 047**

**or 07860 257 803**

E: [advice@plumb-call.co.uk](mailto:advice@plumb-call.co.uk)

W: [www.plumb-call.co.uk](http://www.plumb-call.co.uk)

Gas Safe Register No.8494  
LPG Registered



\*subject to acceptance terms and conditions apply



*“Achieving the best price for our clients is our highest priority”*

- Local
- Professional
- Experienced *Estate Agents*



[www.nortonrickett.co.uk](http://www.nortonrickett.co.uk)

**01780 782 999**



# Crown

## Property Services

- 👑 Electrical & Plumbing
- 👑 Kitchens & Bathrooms
- 👑 Renovations
- 👑 Extensions
- 👑 Windows & Doors
- 👑 Groundworks
- 👑 Landscaping
- 👑 Internal Refurbishment

Old Sulehay Cottages, Sulehay Road, Wansford, PE8 6PA

### 07766 168659

jonathon@hibbins.me

# Village Pizzas

Open Tue – Sat for  
Collection / Eat-In at  
Leedsgate Farm  
4.30pm – 10pm  
Or

Delivery 6pm till 10pm

# 01780 784587

View our Menu at  
[www.villagepizzas.co.uk](http://www.villagepizzas.co.uk)



Mat based Pilates and Chairotics  
Classes for all levels

## MAT BASED PILATES

1 hr classes

Online on Zoom, or in person at  
Christie Village Hall (Wansford) and Harringworth Village Hall

Monday, Tuesday, Wednesday and Thursday  
£3.50 online / £6 in person



Ease back pain  
Strengthen your core, abs and back  
Improve sports performance  
Exercise without joint pain  
Increase your flexibility  
Boost brain power and focus

Christie Village Hall:  
18:00 Monday /  
12:30 Wednesday / 18:00 Thursday  
Online:  
16:45 Monday / 11:30 Thursday  
11:00 & 12:30 Tuesday

Justine Bromage  
Fully Qualified Level 3 Pilates Instructor  
Level 3 Personal Trainer  
RSA to Music Instructor

*Justine*  
BROMAGE FITNESS

justwhim@hotmail.com

07919 106156

## Barnlogs

Kiln Dried Hardwood

### KILN DRIED HARDWOOD LOGS

Prices from £115 per  
loose cubic metre

Certified 'Ready to Burn'  
Bagged or loose loads  
Sustainably sourced  
local hardwood  
Ultimate clean burn  
with maximum heat output  
Kindling &  
firelighters available

FREE LOCAL DELIVERY

**£5 OFF** with code  
LIVINGVILLAGES-5

**ORDER ONLINE:** [www.barnlogs.co.uk](http://www.barnlogs.co.uk)

01780 784055 / 07734 439292 sales@barnlogs.co.uk

**SAVE  
MONEY  
ON YOUR  
ENERGY  
BILLS**

