

Living Villages

December 2023

*Winter Newton Thornhaugh
Stibington Sutton Wansford*

Call us today to book your
free appointment

Heritage Wills

Peace of mind when you need it most



Will Writing



Client Care
Package



Lasting Power
of Attorney



Agricultural
Property Relief



Trusts



Corporate
Benefit Package



Property
Protection Trusts



Tennants in
Common



Probate Services



Property
Title Change

01480 465855 | heritagewills.co.uk

HLC Business Centre, 5 The Quay, St Ives,
Cambridgeshire, PE27 5AR

Editorial

Dear readers

I'm sure that many of you are excited for the start of the December Festivities around the villages - there's details of the Water Newton Christmas Event on page 21 as well as the important service dates across the Parishes beginning on page 6 - but looking to the start of the new year please think about recycling your tree, either with Huntingdonshire Council, in aid of East Anglian Children's Hospice or the Sue Ryder Charity. Details of the former, including household waste dates for the festive period, are on page 22, and for the later, take a look on page 11.

Speaking of Sue Ryder, on page 14 there are two December Initiatives from the charity - 'Celebrate A Life' and the 'December Daily Dash'.

Rehearsals for Wansford Church Choir are in full swing and there are two events during December when you can see them. We also include details of how to get involved, mentioned in November's edition, in case there are any volunteers who didn't see the notice.

All that remains is to wish all our contributors, advertisers, distributors, and everyone involved with putting Living Villages together, a happy and restful Christmas.

Best wishes

Craig

Contents

6	Worship & Benefices
10	Stibbington and Wansford W.I.
16	Parish Council Notices and Minutes
26	Contacts

Studying for a course?- Did you know you can apply for a grant?

Since the early 1990s the **Reverend Thomas Woolsey's Charity** has been giving for equipment to all students from Thornhaugh and Wansford for further education, apprenticeship or skills.

The Trustees of the charity will be meeting in September to allocate the grants, so there is plenty of time for any student to apply. Go to the website thewoolseycharity.co.uk to for more information and complete the application form.

Lisa Chambers, Secretary, Rev. Thomas Woolsey's Charity



LAUREN BAILEY AESTHETICS

Our treatments include:

- Skin Boosters - Prophilos, Seventy Hyal, Lumi Eyes, Sunekos & Jalupro
- Advanced Anti Wrinkle Injections
- Treatment of Excessive Sweating
- Fat Dissolving
- Lip Enhancement
- Chemical Peels
- Vitamin Injections
- Dermal Fillers
- Micro-Needling
- PDO Threads

Scan QR Code to book



Find us on   laurenbaileyaesthetics

COVERING WANSFORD, STAMFORD & PETERBOROUGH



**BCN
MULTICLEAN**

Dry carpet cleaning and upholstery cleaning services in Peterborough and the surrounding areas.

Whether you have an individual chair or carpet in a domestic property, or are interested in contract carpet cleaning in your business, you can benefit from our 35 years experience.

Telephone: **01832 280429**
Mobile: **07951 124374**
Email: **info@bcnmulticlean.co.uk**

GRIFFIN

**Solid Fuel Merchant
Supplier of Pre Packs**

Coal Bunkers Charcoal Compost
Flo Gas Logs & Sticks Salt

Coal Yard	Office
Station Road	12 Church Hill
Nassington	Castor
01780 782540	01733 380470

BARKLEYS GARDEN SERVICES

Your LOCAL Gardening Team

Regular garden maintenance
Lawn care and mowing
Hedge trimming

Lady gardener available
Get in touch by calling
Bev - 07593 721144
Peter - 07747 502471
beverleybarkley1@gmail.com

NEED A RECOMMENDATION?

The **ONLY** Police Checked
recommended register of
local approved traders



FREE and EASY service

safelocaltrades.com[®]

Recommended & Approved 

Much more than just a recommendation ...

Wishing all our customers a Safe and
Happy Christmas



Here are some of our members ...

New Garage Doors & Repairs



**GARAGE DOOR &
SHUTTER SERVICES**

www.garagedoorandshutterservices.co.uk

Call Dave on

07709 337647

Electrician

**OLD COURT
ELECTRICAL**

www.oldcourtelectrical.co.uk

Call David on

07973 507420

**Loft Insulation & Boarding,
Cavity Wall Insulation**



www.atoz-energy.co.uk

Call Leanne on

07878 314562

Building & Carpentry Services



Steve Deprez & Son

Building • Brickwork • Carpentry

Preserving the past, Building the future

stevedeprezbuilders@gmail.com

Call Steve on

07414 292188

**Driveways, Patios &
Hard Landscaping**

**STYLE
HOME IMPROVEMENTS LTD**

www.styleimprovements.com

Call Tony on

07879 881315

Gutter Cleaning & Repairs



www.gutterdeancompany.com

Call Jeremy on

0800 179 9363

To see our full list of members and read all reviews just go to ...



www.safelocaltrades.com



0800 014 1832



The safest way to source local traders

Tear out page and keep

WORSHIP DATES

Every Sunday 5.00pm - Zoom 'At Home' Service. Log in and phone details from Rev. Jane jdtailby@aol.com 01780 782271

St. Leonard's, Apethorpe		
3rd	11.00 a.m.	Holy Communion
17th	11.00 a.m.	Carol Service
24th	11.00 a.m.	Christmas Communion

St. Mary's and All Saints, Nassington		
Every Thursday 9.30 a.m. Holy Communion BCP		
3rd	8.15 a.m.	Holy Communion BCP
3rd	3.00 p.m.	Christingle Making and Service
10th	9.30 a.m.	Holy Communion
17th	6.00 p.m.	Carol Service and Christmas Tree Festi
24th	4.00 p.m.	Crib Service
25th	9.30 a.m.	Christmas Communion

St. Andrew's, Thornhaugh		
3rd	9.30 a.m.	Holy Communion for St. Andrew
17th	9.30 a.m.	Carols and Celebration
24th	3.00 p.m.	Christingle Making and Service
25th	9.30 a.m.	Christmas Communion

St. Mary's, Wansford		
Every Wednesday 10.00 a.m. Morning Prayer		
10th	9.30 a.m.	Holy Communion
17th	6.00 p.m.	Community Carol Service
24th	6.00 p.m.	Advent Windows
24th	11.30 p.m.	Midnight Mass

St. Mary's, Woodnewton		
3rd	9.30 a.m.	Holy Communion
17th	9.30 a.m.	Holy Communion
20th	7.00 p.m.	Carol Service
23rd	4.00 p.m.	Christingle Making and Service
24th	9.30 a.m.	Christmas Communion

St. Mary Magdalene's, Yarwell		
10th	11.00 a.m.	Holy Communion
19th	6.00 p.m.	Carol Service
25th	11.00 a.m.	Christmas Communion
31st	11.00 a.m.	BENEFICE SERVICE AND DEDICATION OF THE NEW BELL

How are your plans for Christmas? Whether you are someone who had everything organised months ago, or a last-minuter (like me!) I am sure that there is plenty that you are looking forward to this month, whether that is with family or friends or something special for yourself. We have our Christmas in the church planned where we hope to share God's welcome with our community and hopefully there is something for all as we "keep the feast" across our two villages.

We begin the month with a special celebration of St. Andrew, our patron saint at Thornhaugh on the first Sunday of the month before our attention turns towards Christmas. We have plenty of carols on 17th on 17th with a celebration of carols in the morning at Thornhaugh at 9.30 am and the community carol service at Wansford at 6.00 pm in the evening, led by our splendid choir. On Christmas Eve we will gather in Thornhaugh Church to make Christingles and share a short family service together; a great time for everyone – young and old alike! We will meet the youngsters of Wansford in St. Mary's later in the afternoon (6.00 pm) to share in their Advent Window activities, and I am sure we are all looking forward to their contribution to our festivities as Christmas approaches. We have our traditional Midnight Mass at 11.30 p.m. on Christmas Eve, and then a Christmas morning Communion at 9.30 a.m. at Thornhaugh for the early-birds! You'll notice from our schedule that if you would like to attend a Communion service at Christmas, but Christmas Day is too full of other things, we have two morning services at Woodnewton and Apethorpe celebrating Christmas on 24th, Christmas Eve, which is also a Sunday, of course.

Whichever services you choose across our group of churches you can be assured of a warm welcome; unlike Mary and Joseph at the inn in Bethlehem, there is rooms for everyone. We do hope that in all that we are offering, you will find something that will help you to celebrate this wonderful time of year!

Of course, we all know that in the midst of the fun and excitement there are those who may find this time of year difficult, maybe those who grieve the loss of a loved one who will not share Christmas with them this year, or have been through a difficult time that has left scars on their heart, or that they are on their own and might wonder where they belong. We hope that in the church everyone will find their place, because everyone has a place in God's heart. Come as you are, and you will find your place. God chose to show his welcome for us in Jesus, to dwell with us and we rejoice in that as we celebrate Christmas once again; all are welcome to share in our celebrations! However you keep this season, may you know God's love, comfort and joy, and there I am – singing Christmas carols already – Happy Christmas!

With every blessing
Rev. Jane

REFLECTIONS

CASTOR BENEFICE

We are still maintaining the following service pattern every Sunday in each of our **Parish churches** until further notice.

Marholm 9.00am - Holy Communion (Morning Prayer on 4th Sunday)

Castor 8.00am Holy Communion (said service) 10.15am - Sung Eucharist

Sutton 9.00am on 4th Sunday of the month - Holy Communion

Every **Wednesday** morning at **10am** there is a service of Holy Communion at **Castor**.

We still continue to celebrate **Evensong via Zoom at 6pm every Sunday**, if you wish to join us please contact the Benefice office for the Zoom link and access code.

admin.castor@btconnect.com

Advance Notice - The next service at St. John the Baptist, Stibbington will be our **Carol Service** on **Sunday the 17th of December at 4pm**, when mulled wine will be served on arrival, please see separate poster below, together with details of **Christmas services within the Benefice**.

David Ridgeway

CASTOR BENEFICE PLANNED CHRISTMAS SERVICES for 2023

CAROL SERVICES

Sunday 10 December 4pm Christingle Service, Castor

Friday 15 December 6.30pm Water Newton Christmas Light Festival

Sunday 17 December 4pm Stibbington Carol Service (see separate poster)

Wednesday 20 December 4pm Sutton Carol Service

Sunday 24 December 4pm Crib Service, Castor

CHRISTMAS MASSES

Christmas Eve, Sunday 24 December

5.30pm Sutton Christmas Mass

11.30pm Midnight Mass, Castor

Christmas Day, Monday 25 December

8am Castor Communion (said)

9am Upton Communion (said)

10.15am Castor Festival Eucharist

ST. JOHN THE BAPTIST STIBBINGTON

CAROL SERVICE



SUNDAY 17th December
4.00 pm

Do come and join us, you will be assured of a very warm welcome, mulled wine will be served on arrival

Woodland Timber Products

Fencing, Play Houses, Gates

Pet Housing, Sheds



01780

783983



Unit 4, Leedsgate Farm Business Park.
Kings Cliffe Road. Wansford PE8 6NX.
07748 787360

woodlandtimber.products@yahoo.com

THE SPECIALISTS IN HEALTH CARE



Podiatry & Chiropody

Nail Surgery For Ingrown Nails,
Biomechanics & Orthotics, Diabetic Foot Care, Verrucae, Corns,
Cracked Heels, Calluses, Hard Skin, Nail Reconstruction



Ear Wax Microsuction

Ear Ache? Hearing Loss? Blocked Ears? Pre Hearing Test Clean?
It could just be wax! Safe, Gentle and Effective Ear Wax Removal



CryoAesthetics for Skin Lesions

Skin tags, Freckles, Age/Liver Spots, Milia, Fibroma,
Seborrheic Keratosis Solar Lentigo, Cherry Angiomas,
Verrucae and warts, Popular nevi (moles, birthmarks)

You can self refer to us for immediate treatment

Home Visits Available

Sue Arnold BSc(Hons) MRCPod & Associates

InStep Foot Clinic, 19 Elton Road, Wansford PE8 6JD

Tel: 01780 782200 wansfordinstep@gmail.com

Castor Lodge Care Home

Our family, caring for yours

At Castor Lodge, our care is the kind we would want all of our loved ones to receive. Offering residential and dementia care, our dedicated team make life comfortable and enjoyable for all our residents, allowing them to live safely and as they choose. Our brand new home is luxurious and beautifully furnished, whilst retaining a warm family atmosphere that makes Castor Lodge feel extra special.

- 68 Spacious en-suite bedrooms
- 6 Premium self-contained suites
- Bistro Café and themed pub
- Sociable lounge and dining areas

To find out more about life at Castor Lodge contact our Customer Relations Manager Laura Mills on 07725 799 217 or email laura.mills@countrycourtcare.com



01733 823 163



Splash Lane, Castor, Peterborough, PE5 7BD



www.countrycourtcare.com



The Friends of St Mary's and St Andrew's

There will be a Christmas themed Coffee Stop on **Wednesday 13th December from 10.30** in St Mary's Church.

Come and join us for a pre Christmas get-together with festive treats.

We still collect items for the food bank in church if anyone feels that they can donate at this time of the year.

Caroline Ashley



THE ARTS SOCIETY PETERBOROUGH

The Arts Society is a leading arts education organisation that brings people together through a shared curiosity for the arts. Each year The Arts Society Peterborough (TASP) holds nine illustrated talks given by experts in their field on subjects ranging widely, including old Masters, modern sculpture, silver jewellery, the work of David Hockney and music in art. The talks are held at The Fleet in Fletton Peterborough on the second Thursday of each month except June, July and August. The talks start at 10.45 am but you are welcome to come earlier and meet like-minded people for a chat over a cup of coffee. Non-members are always welcome, so come and join us!

In addition to the live talks, annual members also receive other benefits. If you wish to find out more about our Society or about becoming a member, please visit our website, www.the-arts-society-peterborough.org.uk Our next two talks are:.

14th DECEMBER 2023

'Berthe Morisot and her life and art' by Dr Lois Oliver

Impressionist Berthe Morisot is known for her light-filled canvasses of modern life: afternoons boating, women in ballgowns, children playing. Lois reviews the artist's work and highlights what set her apart from her predecessors and contemporaries.

11th JANUARY 2024

J.W.M. Turner (1775-1851) 'From Covent Garden to Rome', by Leslie Primo

This talk presents an expanded visual history of the life of Turner and traces his life from the boy genius to his early entry into The Royal Academy.

WANSFORD COMMUNITY HALL

Peterborough Road, Wansford

This hall accommodates parties of up to 36 people seated. Ideal for Meetings, Workshops, Aerobics etc

GREAT VALUE AT ONLY £4 per hour
FOR BOOKINGS TELEPHONE
John Stannage 07879 485330

Capital Lettours



Your local property agent
With over 30 years of
experience

Relocation, Lettings and Sales

Please call our office for a
competitive quote

Peterborough - 01733 553366

(enquiries@capitollettours.com)

www.capitollettours.com

STIBBINGTON & WANSFORD WI

Today's women working for tomorrow's world



Having decided that we all need a little helper over the busy Christmas time, our November meeting was spent making elves from beads and pins.

These delightful elves – are now decorations to adorn trees or presents.

We were invited to attend a special Remembrance service held by the Huntingdon group. Each local group sent a representative to be part of the parade, to remember those that had made the ultimate sacrifice in conflicts from WW1 onwards. As part of the service there was

a dedication to the war memorial, put up in 1919, with money raised by local WI ladies. A big thank goes to Dawn Heatherington, our WI advisor, who represented Stibbington and Wansford group.

Looking forward to 2024, our first meeting in January will be taken by one of our members, Jan Armatige. She has been working with a local charity that supports people living in Ukraine, as well as fundraising in this country, she has recently returned from a trip to Ukraine with a lorry full of items that helps those that are living with the conflict.

Over Autumn and winter we will be meeting in Wansford Community Hall, if you wish to attend one of our upcoming meetings to hear one of our visiting speakers, please get in touch.

Please see below for our upcoming events:

Tuesday 12th December W.I. meeting 7pm, Christmas social, making Christmas gonks. Speaker Joan Rae & Julie Chillcott – at Wansford Community Hall

Tuesday 5th December 2023, 2-4pm Coffee & Craft club, at Wansford Community Hall

Tuesday 2nd & 16th January 2024, 2-4pm Coffee & Craft club, at Wansford Community Hall

Thursday 25th January 2024, 7.30pm Book Club meeting, at The Cross Keys Wansford,

Tuesday 9th W.I. meeting 7pm, Supporting those living in Ukraine. Speaker Jan Armatige. At Wansford Community Hall

Both the Coffee & Craft club, and Book Club are open to all, (not just for WI members) and we look forward to others joining us.

Rhona Punter, email - rhonapunter@aol.com

Recycle your real Christmas tree and help Sue Ryder to be there when it matters

National healthcare charity Sue Ryder is encouraging residents to sign up to their Christmas Treecycle scheme and help raise vital funds for families needing their palliative and bereavement care.

For a suggested donation, the charity will collect real Christmas trees direct from people's front door, front garden or driveway and recycle them.

As part of Treecycle Peterborough, residents who live in PE1, PE2, PE3, PE4, PE5, PE6 7, PE7, PE8, PE9 postcodes can have their trees collected between Saturday 6 January and Tuesday 9 January 2024.

Real Christmas trees are 100% recyclable and can be turned into compost or wood chippings that can be spread over parks, gardens and landscaping, so those who choose to Treecycle will not only be supporting Sue Ryder but will also be helping reduce landfill.

To find out more about the environmentally friendly fundraising collection drive in Peterborough, supported by Nene Valley Tree Services and Safe Local Trades, and to book a collection by midnight on 1 January visit www.sueryder.org/peterboroughtrees

Contact the fundraising team at Sue Ryder Thorpe Hall Hospice with any queries on 01733 225 999 or email: thorpe.fundraising@sueryder.org



Enjoy locally grown frozen blueberries and artisan products

Visit our pop-up farm shop - open on the following dates:

Saturday 9th December – 10am – 12 noon

Saturday 16th December - 10am – 12 noon

We will also be attending Sandringham and Burghley Christmas Fairs.

Mee Blueberries, Lyveden Farm, Fotheringhay Road, Nassington PE8 6QX

Future dates available at:

www.meeblueberries.co.uk



H HEARTYS of Peterborough

Car buying made easy with over 30 vehicle manufacturers on site and 200+ cars in stock

Fantastic part exchange prices offered with fully comprehensive warranty on all purchases

Peace of mind motoring for over 50 years
www.heartysofpeterborough.co.uk

01733 560605
 Unit 10 Flaxley Road,
 Peterborough, PE2 9FT

THE CHRISTIE HALL
 Elton Road, Wansford
 (registered charity no 1033998)

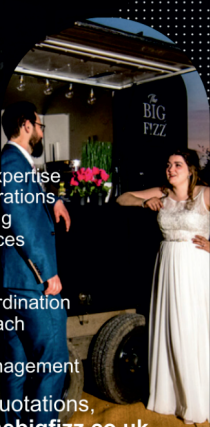
A well-equipped hall with large kitchen and parking.
Available for parties, receptions, meetings, activity groups and most types of private functions
 For more information and details on how to book visit our website
www.christiehall.co.uk

MOBILE HAIRDRESSING
 Ladies & gents hairdresser with over 30 years experience. ✂
 If you are housebound, have reduced mobility, no transport or simply prefer the convenience of having your hair done at home, I have daytime appointments available. Fully insured. Competitive prices.
Please call Tracey on 01780 782467

The
BIG FIZZ
VINTAGE MOBILE BAR

Enhance Your Event

Discover our exquisitely restored vintage Rice Beaufort Horse Box - the perfect mobile bar for top-notch drinks and professional service.



What We Offer

- Wedding & Event Expertise
- Unforgettable Celebrations
- Professional Planning
- Distinctive Experiences
- Indelible Moments
- Tailored Services
- Flawless Event Coordination
- Personalised Approach
- Special Occasions
- Proactive Event Management

For enquiries and quotations, please visit www.thebigfizz.co.uk or call **07738 662388**

PAWS AND CLAWS

★ ★ ★ ★ ★

Boarding Cattery

"Cats have a 'tail' to tell when they've 'paws'd' awhile at Wansford's 5 Star Purr Palace"

Tel 01780 782174
e-mail
pawsandclaws@hotmail.com



Working with Peterborough Cat Rescue to rehome cats and kittens seeking loving homes and laps on which to purr

Peterborough City Council & Rutland County Council
Licence Number: 078015

INTERESTED IN SINGING AT CHRISTMAS?

Wansford Church Choir will shortly begin rehearsals for Christmas Events and would warmly welcome anyone who would like to join us.

We sing 3 part harmony Soprano Alto and Bass
and meet on Thursday Evenings 7.30/9pm at
Choir Master Eddie McDonnell's house in Wansford.

If you are interested please contact Eddie
on 01780 783639 for more details.

The events are:

Sunday 17th December 6pm Community Carol Service at Wansford Church

Saturday 23rd December 7pm

Special Carol Service for Guests of The Haycock Manor Hotel at Wansford Church.



Sue Ryder Celebrate a Life Peterborough

Sue Ryder is inviting you to come together with family, friends and the local community to celebrate and remember your someone special at its Sue Ryder Celebrate a Life Peterborough event this December.

The winter remembrance event, held at The Cresset, Bretton, at 6.30pm on Wednesday 6 December, will see people come together alongside others in their community who are also living with loss to collectively celebrate the lives of people who have died.

It will feature readings, songs and live music performances. Guests are also invited to write a dedication in memory of someone special, which will be displayed at the event, and to share memories of those who have meant so much to you.

Sue Ryder Celebrate a Life is open to anyone who wishes to remember a loved one, regardless of when they died and if they were a patient of Sue Ryder.

Limited spaces are available. For more information or to register to attend visit www.sueryder.org/peterborough or contact the Sue Ryder Thorpe Hall Hospice Fundraising Team via email thorpe.fundraising@sueryder.org or call 01733 225 999.



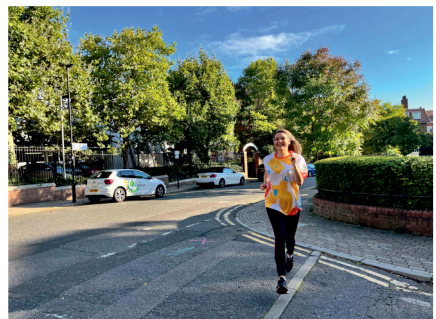
December Daily Dash

This December, Sue Ryder is encouraging people to banish the December blues and sign up to the December Daily Dash. Lace up your trainers and head out to walk, jog or run 5k every day in December to raise vital funds for the charity's palliative and bereavement, which includes Sue Ryder Thorpe Hall Hospice in Peterborough.

Sandwiched between the colder months setting in and the flurry of new hobbies and routines in January, December is often a time associated with indulgence, socialising and generally less healthy habits. The December Daily Dash is a great way to take some time out for yourself, whilst keeping fit and helping to improve your mental health, all whilst raising money for an incredible cause. Whether you do it alone, with friends, family or your furry companion, every step you take and pound you raise this winter helps Sue Ryder to support people when it matters most.

The December Daily Dash was founded in 2015 and since its inception, the festive fundraiser has continued to grow in popularity, with thousands of people in the UK and across the world taking part in a bid to boost their physical and mental health during the festive period.

To sign up to the December Daily Dash for free, visit: www.decemberdailydash.com





Your trusted advisers

We provide individuals and businesses with a full range of accounting, audit, corporate and personal tax planning services.

- Audit and Accountancy
- Business Acquisitions and Disposals
- Business Plans and Projections
- Corporate and Personal Taxation
- Grant Funding
- MT Cloud Accounting
- Payroll, Bookkeeping and VAT
- Tax Planning and Mitigation

For more information,
please contact us:

 **01733 560160**
moorethompson.co.uk

Peterborough | Spalding | Wisbech | Market Deeping



Moore Thompson is registered to carry on audit work in the UK by the Institute of Chartered Accountants in England and Wales.

WANSFORD PARISH COUNCIL



Wansford Parish Council held its 13th November meeting in the Community Hall in Peterborough Road which was attended by five Parish Councillors, Ward Councillor Gavin Elsey, three members of the public a guest clerk; unfortunately Marie Lewis was unwell and unable to attend, all present expressed their best wishes to her. The full report of the meeting will become available on the website: <https://wansford-pc.gov.uk>

With the change of leadership in Peterborough City Council, there have been some encouraging noises made about the return of a bus service to Wansford and the local villages. The campaign group continue to meet regularly and put pressure on the local authority and hope to have some positive news to share in January.

The Youth Council continue to make a positive impact within the village. The flowers they planted earlier in the year continue to add a beautiful addition to the area outside of the church, along the path to the community hall and around the Nene Close play area. In addition to this, the children have now planted a large number of bulbs and sown wildflower seeds, so we should have an abundance of colour next year and an improved habitat to the smallest residents of Wansford.

This year, there will be a display of Advent Windows around the village. The idea being that each day throughout December, at 6pm villagers gather round the house for the day and a new advent window is revealed. If you're lucky you may be offered a drink and/or snack too). On the 24th, the window will be worked on by the children within St Mary's Church. Keep an eye on Facebook and the village notice board for the list of addresses taking part. If you would like to be involved, please contact me ASAP as there are a few slots left. Also keep an eye out for the children carol singing around the village on the 22nd December.

Wansford Council is still short of a councillor. If you would like to find out more about how rewarding it is to be involved within your community, please reach out to any of us or come along to our next meeting on Monday 11th December at 7:30 to find out more! We always welcome participation from Wansford Residents.

Councillor Jane Taylor-Pitt
jane.taylor-pitt@wansford-pc.gov.uk
 07973 933397

SIBSON-CUM-STIBBINGTON PARISH COUNCIL

The Parish Council of Sibson cum Stibbington met on 2nd November. During the meeting the following points were raised and discussed.

Residents raised safety concerns due to speeding on Elton Road & New Lane. It was agreed that this, amongst other road related issues which was due to be raised to the Highways Agency in an upcoming meeting. In addition to the speeding, residents also wanted to recognise the appreciation for the long awaited new double yellow lines which have been implemented in the Stibbington

area. There has however been minor occurrences with lorries parking in the new double yellow line area and we'd like to take this opportunity to remind all residents that any apparent parking violations should be reported to the Police for them to take the necessary enforcement action and residents should not attempt to enforce anything themselves.

Residents also asked if any action can be taken to express their concerns about the lack of further information or decision on the Pure Fuels site. The concerns were in relation to worries about adverse smells and noise pollution. The Parish Council is going to follow up to see what information is available regarding a decision or any progress with applications made for sit permissions.

The Parish would like to raise awareness of the potential £1,000 fine for not picking up after their fouling pets in public spaces. The Parish also plans to re-print and distribute flyers and signage additional means for raising awareness.

Conversations have recently taken place with various stakeholders relating to traffic management and preservation of the iconic Wansford bridge. An initial meeting has taken place with the stakeholders where potential solutions were discussed. An additional meeting is scheduled for December where proposals will be discussed and reviewed. It is noted that there is continued uncertainty regarding who is responsible for the walls which extend beyond the immediate bridge, particularly the collapsed section in the vicinity of the Haycock Hotel garden.

The Parish Council was pleased to share a recent success in an insurance claim made for a lamp post which was destroyed earlier in the year. The cost of the damage caused amounted to £2,592.48 and the insurance company offered to reimburse £2,100 & the Parish Council unanimously agreed to accept this. Existing management team for Christie Hall would be very keen to hear from people who may be able or interested in helping with the oversight and management of the hall. The existing management team feel they are coming to the end of their ability to commit time and effort to the hall and to ensure the hall remains a cornerstone of the community help in the management would be very much appreciated. As a rough guide, duties include management of bookings, bookkeeping / invoicing, light maintenance duties and cleaning. The next Christie Hall AGM is scheduled for 15th Feb 2024 and would encourage as many people as possible to attend or contribute where possible.

The next meeting is scheduled for **Thursday 4th January 2023** in the **Christie Hall commencing at 7pm** and as always all resident of the Parish are welcome to attend or raise queries and concerns to the clerk via sibson.cum.stibbington@gmail.com.

THORNHAUGH PARISH COUNCIL

A meeting of Thornhaugh Parish Council was held on 6th November 2023 in St Andrew's Church. It was chaired by Chris Smith and present were Yana Clipsham, Louise Molesworth, John Stannage (Wansford Parish Council), Peter Sharpley (Member of the Public) and Deirdre McCumiskey (Clerk)

There were apologies for absence from Camilla Plumb and Gavin Elsey (PCC Ward Councillor).

Public Forum

John Stannage said that the Wansford Parish Council Clerk is not well, and all correspondence should be sent to him for the time being. John Stannage said he has a meeting with Highways England on 6th December 2023 and, if the Chairman has not received a response to the issues she has raised with HE, namely the closure of the layby and the work done at the bus stop, he would speak to HE about this.

Police Matters

Rural Parish Police Surgery – this seems to be an attempt at a practical resolution of meeting residents and keeping Parish Councils involved. It isn't over-clear what format this will take or what information is being given. There is a surgery planned between 9.00–11.00 am on 4th January 2024 in Wittering Parish Hall. Yana Clipsham will attend.

Highways Issues

The Chairman she has not had a response to the issues she has raised to date (see Public Forum).

Social Events

The next event will be the Christmas Tree Event on 10th December 2023. Nicky Rogers confirmed she will produce the flyers.

Tour of Thornhaugh Site

The Clerk said she had not heard from anyone who would be interested in going on a tour of the Thornhaugh Site to date.

State of Russell Hill to A47

The Chairman said she had not received a response to her report of the poor state of the road to date.

Dog Foul Bin Update

Thanks were expressed to Sutton Parish Council who had provided a replacement bin. The bin has now been installed by PCC.

Peterborough City Council Budget Simulator

The Chairman attended the Budget Simulator Session at the Wansford Parish Council Meeting on 9th October 2023. Details had been included in the recent Village Newspaper. Peterborough City Council has developed a 'budget simulator' which enables all residents in the Peterborough district to contribute to, and better understand, budget parameters. Details of the simulator were put on the Parish Council website and are available directly on the PCC website. Residents had been

encouraged to have their input in the budget plans (<https://www.peterborough.gov.uk/council/budgets-spending-and-performance/budget-simulator-challenge>).

Planning Applications

23/00569/FUL - Redevelopment of land for an Electric Vehicle Charging Station providing electric car charging points at Abbotts Wood Service Station, Great North Road, Thornhaugh – Permitted; 23/00852/FUL - Proposed Cattery, temporary mobile home and small pet crematorium at Magnolia House, Old Oundle Road, Thornhaugh – No Objections/Support – Awaiting Decision; 23/00954/HHFUL - Proposed swimming pool and solarium, works to outbuilding, external works & planting scheme at The Hall, Thornhaugh Hall Estate, Russell Hill, Thornhaugh – No Objections – Awaiting Decision; 23/00867/WCPP - Variation of condition C2 (change of northern range – 2 no units from Gin Rectifier to Bar use), pursuant to planning permission reference 19/01795/FUL at Sacrewell Farm And Country Centre, Great North Road, Thornhaugh – Permitted; 23/01208/CTR - T1. Walnut - Removal of dead wood and restoration of crown height, as previously approved, to 4m at Browetts Cottage, 6 Russell Hill, Thornhaugh – Permitted; 23/01178/FUL - Change of use of agricultural land to dog walking paddocks including creation of associated parking areas – retrospective at Grange Farm Equestrian Centre, Old Oundle Road, Thornhaugh – Permitted and 23/01338/FUL - Ground-mounted solar panels (60no) along with 3 electric vehicle charging points (retrospective) at Processors & Growers Research Association, Great North Road, Thornhaugh – No Objections. Awaiting Decision

Precept 2023-2024

The Clerk had circulated figures to aid the Parish Councillors in setting the precept. The Parish Council has not asked for an increase for the last two years. It is very close to its current spending (around £500 left after expenses, most of which are fixed). The spend figures have not been increased to reflect current inflation so a higher spend can be expected next year. RPI was running at 6.7% in September 2023. Considering PCC's straightened circumstances, a suggestion was made that the precept is increased by 5% to £7,022 for 2024-2025. This was agreed by all present.

Meeting Dates 2024

These were agreed as: - 9th January, 5th March, 7th May, 9th July, 10th September and 12th November 2024.

Remembrance Day

The Chairman reported that 5 x lamppost poppies and a wreath have been purchased. The lamppost poppies were installed on 1st November and the wreath was laid on 5th November 2023 at the Thornhaugh Remembrance Service.

Footpath

Louise Molesworth said she had received a complaint that the footpath wasn't accessible and not cut in. Peter Sharpley said he had had to lock the gate due to fly-tipping.

The next Thornhaugh Parish Council Meeting will take place at **7.00 pm on 9th January 2024 in St Andrew's Church.**

WANSFORD YOUTH COUNCIL

On October 31st the children organised their first Halloween party. They brought lots of scrummy (but scary looking food) and planned fun activities such as apple bobbing and pin the tail on the skeleton. They played a great game of musical statues before trick or treating very politely around the village with the agreed houses. It was such a success; the children are thinking about more fun activities for next year.

November saw the planting of lots of bulbs and wildflower seeds. Huge thanks to Cllr Clarke and Cllr Stannage for their support and preparation to enable the children to get on with the planting.

December will see the village advent windows and some carol singing around the village on the 22nd of December. Keep your eyes on the notice board and Facebook for details of the houses displaying the advent Windows.

Cllr Jane Taylor-Pitt on behalf of Wansford Youth Council



**Water Newton Community
Christmas Event**

FESTIVAL OF MUSIC AND READINGS FOR CHRISTMAS

**Friday 15th December 2023
6.30pm
St Remigius Church, Water Newton**

Light refreshments will be available afterwards



Just ask

Making the right decisions can be stressful at the best of times, but we are here to help. Whatever's on your mind, just ask.

TOBIAS COLTON BA(Hons) DipPFS
Principal
TOBIAS COLTON WEALTH MANAGEMENT
Associate Partner Practice of St. James's Place Wealth Management

07468 428 380
tobias.colton@sjpp.co.uk
www.tobiascoltonwealthmanagement.co.uk



ST. JAMES'S PLACE
WEALTH MANAGEMENT

The Partner Practice is an Appointed Representative of and represents only St. James's Place Wealth Management plc (which is authorised and regulated by the Financial Conduct Authority) for the purpose of advising solely on the group's wealth management products and services, more details of which are set out on the group's website www.sjpp.co.uk/products. The St. James's Place Partnership and the titles 'Partner' and 'Partner Practice' are marketing terms used to describe St. James's Place representatives.

Huntingdonshire Christmas and New Year Waste Collection Arrangements

During the Christmas and New Year period waste collection days will change which can be seen in the table below.

Residents can also download a collection calendar from www.huntingdonshire.gov.uk/bins

Scheduled Day of Collection	Revised Day of Collection
Monday 11 December	Saturday 9 December
Tuesday 12 December	Monday 11 December
Wednesday 13 December	Tuesday 12 December
Thursday 14 December	Wednesday 13 December
Friday 15 December	Thursday 14 December
Monday 18 December	Friday 15 December
Tuesday 19 December	Saturday 16 December
Wednesday 20 December	Monday 18 December
Thursday 21 December	Tuesday 19 December
Friday 22 December	Wednesday 20 December
Monday 25 December	Thursday 21 December
Tuesday 26 December	Friday 22 December
Wednesday 27 December	Wednesday 27 December
Thursday 28 December	Thursday 28 December
Friday 29 December	Friday 29 December
Monday 1 January	Tuesday 2 January
Tuesday 2 January	Wednesday 3 January
Wednesday 3 January	Thursday 4 January
Thursday 4 January	Friday 5 January
Friday 5 January	Saturday 6 January

The household recycling centres will close at 1pm on Christmas Eve and will be closed on Christmas Day, Boxing Day and New Year's Day. Visit www.cambridgeshire.gov.uk for more information.

Christmas Tree Recycling. Real trees can be placed by the side of the garden bin on collection day. If the tree is bigger than the bin we ask that it is chopped in half. The Household Recycling Centres will also take Christmas trees.

We are again work with the East Anglian Children's Hospice (EACH) to provide a collection of trees from residents who wish to make a donation. More details will be uploaded on to their website soon.

The **household recycling centres** will close at 1pm on Christmas Eve and will be closed on Christmas Day, Boxing Day and New Year's Day. Visit www.cambridgeshire.gov.uk for more information.

Coco Chanel and Linton Tweeds

The name of Coco Chanel is synonymous with style and Parisian chic and has made a significant influence upon fashion during the past century and so it was of some interest when I learned that the Victoria & Albert Museum currently has an exhibition of her work in London. Tickets have been selling fast and when I looked on their website the first available were for December which I quickly booked!

Many of her designs in handbags, shoes, couture dresses and suits have survived the test of time although the mainstay of her success has not only been her designs but also her choice of fabrics with the versatility of jersey and that queen of fabrics, tweed which hangs so well and never creases.



Coco Chanel lived on the Duke of Westminster's Rosehall Estate, near Lairg in Scotland during the 1920s. It was during this time that she made several visits to my childhood city of Carlisle near the Scottish Border (although well before I was born!) to inspect the quality tweeds made by a company called Linton Tweeds in the Shaddongate area of Carlisle and where just around the corner from there another factory was (and still is) making the famous Carr's Table Water biscuits. It was at Lintons that Coco Chanel found their exquisitely soft tweeds made from merino wool and where many of the fabrics had a Scottish influence with plaid and dog tooth patterns punctuated with silk and silver threads to contrast with their often pink, cream and primary colours of the dyed wool. Through her visits to Carlisle Linton Tweeds became one of her favourite fabrics for her couture clothing although Chanel now manufacture their own tweeds in Northern France. Linton Tweeds have since extended their customer base to many other high-end couturiers such as Christian Dior, Dolce & Gabbana, John Galliano, Alexander McQueen, and Jaeger. They also export their tweeds to the USA and Japan.

Coming down to earth, my mother, aunts and I were regular visitors to the Linton factory shop where it was possible to buy a skirt length of Linton tweed for between £3 and £5 in the 1960s and 70s (non-Sale fabrics are now priced at between £34 and £58 a metre) and these skirt lengths were used to make cushion covers, settee covers and even bed canopies – as well as skirts – and its soft tweed was so beautifully warm. So, if you find yourself looking for a good quality fabric to make a skirt or even a suit for a special occasion, I would certainly recommend Linton Tweeds which can be bought on-line (www.lintontweeds.com) and their regular sales and end of line fabrics have greatly reduced prices. Whilst many fabulous outfits have been made by Chanel, Christian Dior and Alexander McQueen et cetera, many of these have been created with the help of an exquisite Linton tweed!



Marie Lewis (October 2023)



FENLAND DISTRICT BROKERS LTD

Your business needs protection at so many levels.

We can advise on full Insurance Coverage.
Local, reliable and experienced.



FOR ALL YOUR BUSINESS INSURANCE NEEDS

0808 175 3050 | 22 Cecil Road, Peterborough | www.fdbltd.co.uk

Fenland District Brokers Ltd are an Appointed Representative of Ten Insurance Service Ltd which is authorised and regulated by Financial Conduct Authority.

Beat the midwinter blues!

Book your next holiday with Kirstie

Here's why...

- She has a wealth of travel experience
- She offers world wide cover, guided tours, cruises and rail journeys
- She can tailor make your ideal package or multicentre itinerary
- She can sell packaged holidays such as Jet2, Kuoni and Easyjet
- She's with you 24/7 for customer support - even when you're on holiday!
- She offers 100% financial protection
- She is friendly and caring

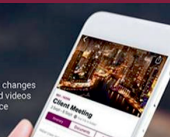
Why wait? Call **01767 360014** or **07815 814798**
or email kirstie.timmins@travelcounsellors.com

 **kirstietimmins**

myTC

YOUR ONLINE ACCOUNT
WITH TRAVEL COUNSELLORS

- Simple to use
- Available via Website and App
- Flight Alerts, inc. cancellations and gate changes
- Detailed hotel information inc. maps and videos
- All your travel documentation in one place



 **travel
counsellors**



Georgina's
Curtains & Keepsakes

Covering all the Villages
Stamford to Stibbington
(and everywhere inbetween!)



Bespoke handmade curtains, roman blinds and soft furnishings to complement your home.
For a free consultation and quote call 07957 686595
www.georginascurtainsandkeepsakes.com

PETER RIDDINGTON LANDSCAPING

We supply and install Patios & Pathways, Decking, Stone Walls and Fencing, We plant Trees, Shrubs Hedges and Flowers, and offer a complete Garden Maintenance and Improvement Service. Garden design service provided
Contact Peter Riddington today for a free quotation

4 LOCKS GREEN, YARWELL, PETERBOROUGH PE8 6PY
Telephone: 01780 783004 Mobile: 07860 962068
Email: peter@peterriddington.co.uk



Registered
Business



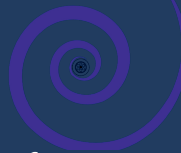
jc.heating
SERVICES

Oil boiler servicing and repairs, heating controls, hot water service and repairs.

Your local heating expert for over 15 years.

Jo Childs,
8 Black Swan Spinney,
Wansford.

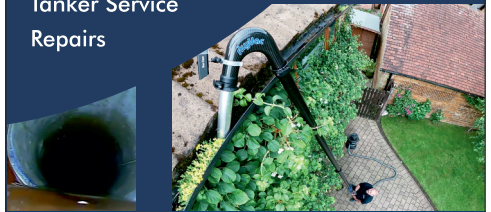
Mob : 07729036942



Perfect Drainage Solutions

Your Drainage Experts (est 2023)

Gutter Cleaning
CCTV Drainage
High Pressure Water Jetting
Drain Blockage Clearance
Tanker Service
Repairs



07817723610

info@pdsLtd.co.uk

www.perfectdrainagesolutions.co.uk

DIRECTORY OF CONTACTS

For all enquiries, contributions and adverts

Craig Bunday	craig@ascotgraphics.co.uk	07771 538661
Ascot accounts	accounts@ascotgraphics.co.uk	01487 801301

Parish Councils

Sutton	Deirdre McCumiskey (Clerk)	01780 782668
Wansford	Marie Lewis (Clerk)	07899 732049
Sibson-cum-Stibbington	Charlotte Newman - sibson.cum.stibbington@gmail.com	
Thornhaugh	Deirdre McCumiskey (Clerk)	01780 782668
Water Newton (Parish Meeting)	Caroline Nathan (Chairman)	07989 362514

City Councillor (Wittering Ward) - Gavin Elsey **07738930599**

Churches

Ministers: Thornhaugh & Wansford		01780 782271
Stibbington, Sutton, Castor & Water Newton		01733 380900
	admin.castor@btconnect.com	

Churchwardens:

St Andrew's Thornhaugh:	Stuart Foreman	01780 783220
	Liz Kemp	01780 782333
St Mary's Wansford:	Caroline Ashley	01780 782408
	Alan Jones	01780 783205
St John the Baptist, Stibbington	Charlotte Bradshaw	01780 781805

Friends:

St Mary's & St Andrew's	Caroline Ashley	01780 782408
St Remigius Water Newton	Jack Ward	01733 394646

Other useful contacts

Neighbourhood Policing 101	P'boro City Council	01733 747474
Wansford Surgery	01780 782342	Royal British Legion 01780 782200
(Out of hours	111 option 4)	Stibbington & Wansford WI . .781733
Wansford Pharmacy	01780 781616	Cricket Club 07860 278800
Communicare	01780 470437	Horticultural Society 01780 592514
H'don District Council	01480 388388	Stibbington Centre 01780 782386

Website www.livingvillagesmagazine.co.uk

©2023 Living Villages Magazine The contents of this magazine may not be copied, reproduced, distributed, republished, downloaded, displayed, posted or transmitted in any form or by any means without the prior written permission of Living Villages Magazine. You may not distribute, display or copy any of the contents of the pages contained in this magazine to third parties without the prior written permission of Living Villages Magazine. All images shown in this magazine are the property of Living Villages Magazine unless otherwise accredited to another. Images may not be used without the prior written permission of Living Villages Magazine or the accredited owner. Unless otherwise specified, the authors of the literary and artistic works in the pages in this magazine have asserted their moral right pursuant to Section 77 of the Copyright Designs and Patents Act 1988 to be identified as the author of those works. If permission is sort and given, it is expected that all articles/images be accredited to either Living Villages Magazine or the author of said articles/images. The views expressed in articles published are strictly those of the writer, and not of Living Villages. Living Villages cannot vouch for products and services advertised, nor accept any liability resulting from the purchasing of product services, although care is taken to ensure their suitability.

NEED A LOCAL PLUMBER?

PlumbCall Plumbing & heating
Same day / next day service!

- Gas, Electric, Oil, LPG & Solar
- Central heating: Full design & installation
- High efficiency boilers
- Boiler / combi replacements
- Central heating, boiler breakdown & plumbing aftercare
- Underfloor heating specialist
- Power flushing
- Landlord certificates
- Free estimating service
- Annual servicing
- All work guaranteed
- OFTEC Registered

12 year manufacturer's guarantee on selected boilers
(Terms & Conditions apply)

CALL US TODAY!

01733 243 047

or 07860 257 803

E: advice@plumb-call.co.uk

W: www.plumb-call.co.uk

Gas Safe Register No.8494
LPG Registered



NORTON RICKETT

Local *Independent* Estate Agents

- Free Market Appraisals
- Probate Valuations (*RICS Surveyor*)
- Local – Office near Wansford
- Established & Trusted since 2012
- Advertising on Rightmove
- Office Presence in London

10
YEAR
ANNIVERSARY

www.nortonrickett.co.uk

01780 782 999



Crown

Property Services

- 👑 Electrical & Plumbing
- 👑 Kitchens & Bathrooms
- 👑 Renovations
- 👑 Extensions
- 👑 Windows & Doors
- 👑 Groundworks
- 👑 Landscaping
- 👑 Internal Refurbishment

Old Sulehay Cottages, Sulehay Road, Wansford. PE8 6PA

07766 168659

jonathon@hibbins.me

Village Pizzas

Open Tue – Sat for
Collection / Eat-In at
Leedsgate Farm
4.30pm – 10pm
Or

Delivery 6pm till 10pm

01780

784587

View our Menu at
www.villagepizzas.co.uk



Mat based Pilates and Chairotics
Classes for all levels

MAT BASED PILATES

1 hr classes

Online on Zoom, or in person at

Christie Village Hall (Wansford) and Harringworth Village Hall

Monday, Tuesday, Wednesday and Thursday
£3.50 online / £6 in person



Ease back pain
Strengthen your core, abs and back
Improve sports performance
Exercise without joint pain
Increase your flexibility
Boost brain power and focus

Christie Village Hall:
18:00 Monday /
12:30 Wednesday / 18:00 Thursday
Online:
16:45 Monday / 11:30 Thursday
11:00 & 12:30 Tuesday

Justine

BROMAGE FITNESS

Justine Bromage
Fully Qualified Level 3 Pilates Instructor
Level 3 Personal Trainer
RSA to Music Instructor

justwhim@hotmail.com

07919 106156



Greenwood homecare

Do you need care visits at home?

Greenwood Homecare
provides quality care
in Peterborough and
the surrounding areas

✓ FREE ASSESSMENT

🏠 DAY, LIVE-IN OR NIGHT
CARE AVAILABLE



FOR MORE INFORMATION

Visit: Greenwoodhomecare.co.uk

Email: Peterborough@greenwoodhomecare.co.uk

Call: **01733 808531**