

# *Living Villages*

*November 2024*

*Water Newton Thornhaugh  
Stibbington Sutton Wansford*

Image taken by John Measures



Call us today to book your  
free appointment

---

# Heritage Wills

Peace of mind when you need it most



Will Writing



Client Care  
Package



Lasting Power  
of Attorney



Agricultural  
Property Relief



Trusts



Corporate  
Benefit Package



Property  
Protection Trusts



Tennants in  
Common



Probate Services



Property  
Title Change

---

01480 465855 | [heritagewills.co.uk](http://heritagewills.co.uk)

HLC Business Centre, 5 The Quay, St Ives,  
Cambridgeshire, PE27 5AR

Dear readers

On the front cover there is a beautiful picture from John Measures of a rare sight for some in the garden - a Hedgehog, whose name is Sally! John's friend helps the Peterborough Hedgehog Hotel with rescued and injured Hedgehogs which are nursed back to health and released back into the wild. Sally is seen here snuggling down, waiting for the release box door to open later that night into John's garden. Sally is one of the 'Longueville Eight', a parentless litter rescued earlier on in the year. At this time of year, please remember to check your garden bonfires as the Hogs will soon be starting to hibernate.

The Stibbington and Wansford WI are holding a charity coffee morning on Saturday 23rd November, to raise money for T-21 charity, supporting young people with Down's Syndrome. Please support it if you can, details are on page 12.

It's getting closer to the festive season, there's information about the Advent Windows in Wansford on page 17, Wansford Church Choir are auditioning on page 8, and Nene Valley Railways launch their North Pole Adventure on page 29.

There is also information about this year's Augean Grants, Scouting in Castor and Ailsworth holding their AGM, the Friends Of St Remigius Harvest Festival and St Mary's Church Cake Sale.

Finally, near the back of this month's issue, you'll find information about the Countryside Charity's cost of living support page regarding the Winter Fuel Allowance and eligibility (P33), and on page 30 -33, Sibson-cum-stibbington Parish Council offer a step by step guide for those residents who are having difficulty accessing the Online Portal and have their say regarding the development on sites at Sibson, Chesterton and Allwalton. Also see our 'Letters' on page 22.

If you have contributions for upcoming editions of this, your local magazine, please get in touch using the contact details on page 34.

Best wishes

Craig

## Contents

- 6 Worship & Benefices
- 11 Stibbington and Wansford W.I.
- 16 Parish Council Notices and Minutes
- 28 Horticultural Society
- 34 Contacts



**HOME**  
MORTGAGE SOLUTIONS LTD

THERE FOR YOU EVERY STEP OF THE WAY  
Whole of Market . Critical Illness. Solicitor Liaison. Total Protection

**01205 631330**  
**kate@homemortgagesolutions.uk**  
**www.homemortgagesolutions.uk**

\*Your home may be repossessed if you do not keep up repayments on your mortgage

**WANSFORD  
COMMUNITY HALL**  
Peterborough Road, Wansford

This hall accommodates parties of up to 36 people seated. Ideal for Meetings, Workshops, Aerobics etc

GREAT VALUE AT ONLY £4 per hour  
FOR BOOKINGS TELEPHONE  
clerk@wansford-pc.gov.uk

**BCN  
MULTICLEAN**

Dry carpet cleaning and upholstery cleaning services in Peterborough and the surrounding areas.

Whether you have an individual chair or carpet in a domestic property, or are interested in contract carpet cleaning in your business, you can benefit from our 35 years experience.

Telephone: **01832 280429**  
Mobile: **07951 124374**  
Email: **info@bcnmulticlean.co.uk**

**Woodland Timber Products**  
Fencing, Play Houses, Gates  
Pet Housing, Sheds

**01780  
783983**

Unit 4, Leedsgate Farm Business Park.  
Kings Cliffe Road, Wansford PE8 6NX.  
07748 787360  
[woodlandtimber.products@yahoo.com](mailto:woodlandtimber.products@yahoo.com)




*Capitol Lettours* Your local property agent  
With over 30 years of experience  
Relocation, Lettings and Sales

Please call our office for a competitive quote

Peterborough - 01733 553366  
(enquiries@capitollettors.com )  
[www.capitollettors.com](http://www.capitollettors.com)



**GRIFFIN**

**Solid Fuel Merchant  
Supplier of Pre Packs**

Coal Bunkers Charcoal Compost  
Flo Gas Logs & Sticks Salt

<b>Coal Yard</b>	<b>Office</b>
Station Road	12 Church Hill
Nassington	Castor
01780 782540	01733 380470

**BARKLEYS GARDEN SERVICES**  
Your LOCAL Gardening Team

Regular garden maintenance  
Lawn care and mowing  
Hedge trimming

Lady gardener available  
Get in touch by calling  
Bev - 07593 721144  
Peter - 07747 502471  
[beverleybarkley1@gmail.com](mailto:beverleybarkley1@gmail.com)





# NEED A RECOMMENDATION?

The **ONLY** DBS Checked  
recommended register of  
local approved traders



**FREE** and **EASY** service

**safe**localtrades.com<sup>®</sup>

★★★★★



Recommended & Approved

Much more than just a recommendation ...

## Serving the PE Postcode community since 2008

Over 70 different trade categories and over 18,000 reviews

Here are some of our members ...

New Garage Door & Repairs



**GARAGE DOOR &  
SHUTTER SERVICES**

[www.garagedoorandshutterservices.co.uk](http://www.garagedoorandshutterservices.co.uk)

Call Dave on

**07709 337647**

Electrician

**OLD COURT  
ELECTRICAL**

[www.oldcourtelectrical.co.uk](http://www.oldcourtelectrical.co.uk)

Call David on

**07973 507420**

Loft Insulation & Boarding,  
Cavity Wall Insulation



**A TO Z  
ENERGY SOLUTIONS**

[www.atoz-energy.co.uk](http://www.atoz-energy.co.uk)

Call Leanne on

**07878 314562**

Building & Carpentry Services



**Steve Deprez & Son**  
Building • Brickwork • Carpentry

*Preserving the past. Building the future.*

[stevedeprezbuilders@gmail.com](mailto:stevedeprezbuilders@gmail.com)

Call Steve on

**07414 292188**

Gutter Cleaning & Repairs

**THE  
GUTTER CLEAN  
COMPANY**

[www.guttercleancompany.com](http://www.guttercleancompany.com)

Call Jeremy on

**0800 179 9363**

Roofing Specialist. Fascias,  
Soffits & Guttering

**Synergy  
Roofing**

[www.synergyroofing.co.uk](http://www.synergyroofing.co.uk)

Call Simon on

**01733 711721**

Kitchens & Bathrooms

**APG BATHROOMS**

[www.apghomeimprovements.co.uk](http://www.apghomeimprovements.co.uk)

Call Aaron on

**01733 568651**

Double Glazing Repairs

**Nene Valley UPVC  
REPAIR & MAINTENANCE**

[www.nenevalleyupvcrepairs.co.uk](http://www.nenevalleyupvcrepairs.co.uk)

Call Andrew on

**01733 576397**

in association with ...



**Cambridge City Council**

**Cambridgeshire  
& Peterborough  
ageUK**

**CAMBRIDGESHIRE AND PETERBOROUGH  
AGAINST SCAMS PARTNERSHIP  
CAPASP**

To see our full list of members and read all reviews just go to ...



**www.safe**localtrades.com



**0800 014 1832**



The safest way to source local traders

Tear out page and keep

# WORSHIP DATES

Every Sunday 5.00pm - Zoom 'At Home' Service. Log in and phone details from Rev. Jane [jdailby@aol.com](mailto:jdailby@aol.com) 01780 782271

## St. Leonard's, Apethorpe

3rd	11.00 a.m.	Holy Communion for St. Leonard
10 <sup>th</sup>	10.50 a.m.	Remembrance Service

## St. Mary's and All Saints, Nassington

Every Thursday 9.30 a.m. Holy Communion BCP

3 <sup>rd</sup>	8.15 a.m.	Holy Communion BCP
3 <sup>rd</sup>	9.30 a.m.	Songs of Praise
10 <sup>th</sup>	10.55 a.m.	Remembrance Service
17 <sup>th</sup>	9.30 a.m.	Holy Communion
24 <sup>th</sup>	3.00 p.m.	Christingle Craft Church

## St. Andrew's, Thornhaugh

3rd	9.30 a.m.	Remembrance Prayers and Morning Praise
17 <sup>th</sup>	11.00 a.m.	Holy Communion

## St. Mary's, Wansford

Every Wednesday 10.00 a.m. Morning Prayer		
10 <sup>th</sup>	10.50 a.m.	Remembrance Service
24 <sup>th</sup>	9.30 a.m.	Holy Communion

## St. Mary's, Woodnewton

3 <sup>rd</sup>	9.30 a.m.	Holy Communion
10 <sup>th</sup>	10.55 a.m.	Remembrance Service
17 <sup>th</sup>	9.30 a.m.	Holy Communion
24 <sup>th</sup>	8.30 a.m.	Holy Communion BCP

## St. Mary Magdalene's, Yarwell

10 <sup>th</sup>	3.00 p.m.	Remembrance Service
17 <sup>th</sup>	3.00 p.m.	Methodist Service
24 <sup>th</sup>	11.00 a.m.	Holy Communion

## CASTOR BENEFICE

We are still maintaining the following service pattern every Sunday in each of our **Parish churches** until further notice.

**Marholm** 9.00am - Holy Communion (Morning Prayer on 4th Sunday)

**Castor** 8.00am Holy Communion (said service) 10.15am - Sung Eucharist

**Sutton** 9.00am on 4th Sunday of the month - Holy Communion

Every **Wednesday** morning at **10am** there is a service of Holy Communion at **Castor**.

We still continue to celebrate **Evensong via Zoom at 6pm every Sunday**, if you wish to join us please contact the Benefice office for the Zoom link and access code.

[admin.castor@btconnect.com](mailto:admin.castor@btconnect.com)

The next service at **St. John the Baptist, Stibbington** will be **Carol Service on Sunday 15th December at 4pm**, see opposite.

**David Ridgeway**

## ST. JOHN THE BAPTIST STIBBINGTON

### CAROL SERVICE



**SUNDAY 15th December**  
**4.00 pm**

**Do come and join us, you will be assured of a very warm welcome, mulled wine will be served on arrival**

By the time you read this, the clocks will have changed, it will be getting lighter later in the mornings and the nights will feel

## REFLECTIONS

longer. In these darker days of the year, it seems good to focus on light; light overcoming the darkness and indeed, light in the darkness. That is very much a theme within the Church during November. The month begins with the celebration of All Saints' Day, as we recall all those who have been inspirational in the life of the Church and in whom we can find encouragement and companionship now. So many of the saints we remember faced darkness of many kinds, but they were not overcome and trusted in the light of God.

All Saints' Day is followed by All Souls' Day when we remember those we love who have died, and whom we see no longer. As we remember the sadness of their loss we also recall the light they brought into our lives, and the light that joyful memories still bring to us. Of course, there is Hallowe'en as well, and although many might see that as a fun day of scary things, we also remember that the light does come again, that light and goodness are always stronger than the darkness.

We recall that also the following week, on Remembrance Sunday when we recall the darkness of war, and those who gave their lives for our freedom. Giving thanks for their courage in the midst of darkness can lead us to the light of hope, even as we face the darknesses we see around us now. We will have prayers for Remembrance-Tide at St. Andrew's on 3rd November as well as our Remembrance Service at Wansford on 10th November. The theme continues as we draw to the end of November, which brings us to Advent Sunday, the beginning of the Christian year and the time we begin to look towards Christmas. This is the ultimate triumph of light over darkness; Jesus, who was and is, the Light of the World, who came to bring the light of hope and life to our world.

Where-ever you find light; in the company of family and friends, in the things you enjoy, in fellowship with the God who loves us, may these darker days of Autumn be filled with light and joy, remembering the Light in the darkness and the Light that overcomes all darknesses – our Lord Jesus.

*With every blessing,*  
*Revd. Jane*



## SINGING AT CHRISTMAS

Wansford Church Choir will shortly begin rehearsals for the annual Community Carol Service

to be held this year on Sunday 15 December at 6pm in St Mary's Church, Wansford.

The choir meets on Thursday evenings 7.15- 9.00 at 19A Old Leicester Road, PE8 6JR

We would extend a very warm welcome to anyone who would like to join us

The first rehearsal will take place on Thursday 7 November

Just come along or for more details please contact me

**01780 783639 or 07713 371472**

Eddie McDonnell




**Perfect Drainage Solutions**  
Your Drainage Experts (est 2023)

- Gutter Cleaning
- CCTV Drainage
- High Pressure Water Jetting
- Drain Blockage Clearance
- Tanker Service
- Repairs




**07817723610**  
**info@pdsLtd.co.uk**  
**www.perfectdrainagesolutions.co.uk**





Oil boiler servicing and repairs, heating controls, hot water service and repairs.

Your local heating expert for over 15 years.

Jo Childs,  
8 Black Swan Spinney,  
Wansford.  
**Mob : 07729036942**

## THE SPECIALISTS IN HEALTH CARE



### Podiatry

#### Shock Wave Therapy now Available

InStep Foot Clinic is the only Podiatry Clinic within 30 miles to offer this treatment. *Beneficial for relieving pain and restoring function*, particularly: *Plantar Fasciitis, Achilles Tendinopathy, Tennis Elbow, ITBS, Shin Splints, Heel Spurs etc*  
Nail Surgery For Ingrown Nails, Biomechanics & Orthotics, Diabetic Foot Care, Verrucae, Corns, Cracked Heels, Calluses, Hard Skin, Nail Reconstruction



### Ear Wax Microsuction

**Ear Ache? Hearing Loss? Blocked Ears? Pre Hearing Test Clean?**

It could just be wax! Safe, Gentle and Effective Ear Wax Removal



### CryoAesthetics for Skin Lesions

Skin tags, Age/Liver Spots, Milia, Seborrheic Keratosis, Solar Lentigo, Cherry Angiomas, Verrucae, warts, Popular nevi (moles, birthmarks)

**You can self refer to us for immediate treatment**

**Home Visits Available**

**Sue Arnold BSc(Hons) MRCPod & Associates**

InStep Foot Clinic, 19 Elton Road, Wansford PE8 6JD

**Tel: 01780 782200**    [wansfordinstep@gmail.com](mailto:wansfordinstep@gmail.com)

**Now  
Accepting  
New  
Patients!**



Our family, caring for yours

### Castor Lodge Care Home

**Residential, Dementia  
and Respite Care**

Our care is the kind we'd all want our loved ones to receive. Castor Lodge is luxurious and beautifully furnished whilst retaining a warm, homely atmosphere.

To book your tour call  
**01733 731455**



Splash Lane,  
Castor, Peterborough,  
PE5 7BD



## The Friends of St Mary's and St Andrew's

There will be a Coffee Stop in St Mary's church on **Wednesday 13th November**, from 10.30am after Morning Prayer All are welcome.

**Caroline Ashley**

### NEWS FROM WANSFORD PHARMACY

Did you know our pharmacy is able to "prescribe" antibiotics and other prescription only medications for a range of conditions under the new NHS Pharmacy First Service? This time of year sinusitis and tonsillitis are two regular culprits of ill health. Sinusitis, commonly referred to as a sinus infection, is the inflammation of the sinuses, which are small air-filled cavities located in the skull around the nose and eyes. This condition can arise due to infections, allergies, or other factors that lead to mucus build up and blockage of the sinus passages. We can treat acute sinusitis which lasts less than four weeks and often follow a viral infection like a cold. Common symptoms include nasal congestion, facial pain or pressure, and a decreased sense of smell. Self-care measures: Rest, hydration, over-the-counter pain relievers such as ibuprofen, saline nasal sprays, and steam inhalation can alleviate symptoms. Although many cases will resolve of their own accord we are here to help identify and treat cases where more than self-care may be needed.

Tonsillitis is an inflammation of the tonsils, which are two masses of tissue located at the back of the throat. Tonsillitis is usually caused by viral or bacterial infections most commonly by group A streptococcus (strep throat). The main symptoms of tonsillitis include:

- Sore throat
- Swollen, red tonsils (sometimes with white or yellow coating)
- Fever
- Difficulty swallowing
- Swollen lymph nodes in the neck
- Bad breath
- Headache
- Loss of appetite

In children, additional symptoms may include stomach pain, vomiting, and drooling. Westock Step tests and can chat with you to check is any of these above symptoms apply to

you, take a visual check of your throat and offer appropriate treatment, whether over-the-counter remedies or with antibiotics, typically penicillin.

While tonsillitis cannot be completely prevented, you can reduce your risk by:

- Practicing good hygiene
- Avoiding close contact with infected individuals
- Washing hands frequently
- Not sharing utensils or personal items

Most cases of tonsillitis resolve within a week with proper treatment and rest.

So, this Autumn you can count on us to support your health.

Please support us too by shopping local. We are here for you.



## STIBBINGTON & WANSFORD WI

### Today's women working for tomorrow's world

theWI  
INSPIRING WOMEN



This month's article starts with a big thank you, not one but many.

Firstly, a fabulous thank you to the cake bakers, coffee drinkers and cake munchers, all their generosity helped to make our annual coffee morning in aid of Macmillan cancer support such a success.

We have been able to donate a fantastic £420 to this amazing charity.



My second thank you goes to those that have made hundreds of poppies for our Remembrance day memorial display for this year. The crafting ladies have now started to assemble the display, at the end of the session it was still work in progress, thanks to the large number of poppies made and donated for the display. When finished it will be installed outside the church in November.

If you have made a poppy, please drop off at 4, Elton Road by 4th November, we will then carrying out the

final assemble and installation of our display during the craft meeting on 5th November. We would love to include your poppy.

This month, our speaker was Mike Murray one of the volunteers from King's Cliffe airfield museum. He took us through the history of the site, its first use during the first world war, when it was used as a night landing ground for the Bedford based 75 home defence squadron. All the way to the second world war, where it had a number of RAF squadrons based there, before the Americans were based there from 1943 until the end of the war. They expanded the site to its current size, and as many locals know, the hanger was the host of Glenn Millers' last hanger concert in 1944. The museum is open the second Sunday of each month if you wish to find out more from the dedicated group of volunteers.



Autumn is here, so our monthly meeting will take place in Wansford Community Hall, other meetings, please check each individual event. If you wish to attend one of our upcoming meetings to hear one of our visiting speakers, please get in touch. Please see below for our upcoming events:

**Tuesday 12th November 2024**, Prosecco and pudding Evening

**Tuesday 5th & 11th November 2024**, 2-4pm Coffee, Cake & Craft club, at Wansford Community Hall

**Book Club meeting**, at The Cross Keys Wansford, December meeting has not yet been finalised, look in the next issue for confirmation.

Both the Coffee & Craft club, and Book Club are open to all, (not just for WI members) and we look forward to others joining us.

Rhona Punter, email - [rhonapunter@aol.com](mailto:rhonapunter@aol.com)

Stibbington & Wansford W.I. are hosting a charity coffee morning in support of T-21 charity and The Birch Tree café.

23<sup>rd</sup> November 2024, 10.30am to 12.30pm at St Mary's Church Wansford.



All welcome, please come along and support this wonderful local charity, which aims to provide employment, develop life skills and build independence for young

adults with Down's Syndrome in a welcoming and supportive community environment.





# H HEARTYS

*of Peterborough*

Car buying made easy with over 30 vehicle manufacturers on site and 200+ cars in stock

Fantastic part exchange prices offered with fully comprehensive warranty on all purchases

*Peace of mind motoring for over 50 years*  
[www.heartysofpeterborough.co.uk](http://www.heartysofpeterborough.co.uk)

01733 560605  
 Unit 10 Flaxley Road,  
 Peterborough, PE2 9FT

## THE CHRISTIE HALL

Elton Road, Wansford  
 (registered charity no 1033998)

A well-equipped hall  
 with large kitchen and parking.

**Available for parties, receptions,  
 meetings, activity groups  
 and most types of private functions**

For more information and details on how to book  
 visit our website

[www.christiehall.co.uk](http://www.christiehall.co.uk)

## MOBILE HAIRDRESSING

Ladies & gents hairdresser with over 30 years experience. ✂

If you are housebound, have reduced mobility, no transport or simply prefer the convenience of having your hair done at home, I have daytime appointments available. Fully insured. Competitive prices.

**Please call Tracey on 01780 782467**





## Men's Breakfast Meeting

An informal bi-monthly social gathering for men from local villages to meet for breakfast and hear from an invited speaker. Interested? Contact [mensbreakfast@sulehay.co.uk](mailto:mensbreakfast@sulehay.co.uk)



**30th November 2024**  
**1st February 2025**  
**5th April 2025**

**Queen's Head**  
**Nassington**  
**08:30hrs - 10:00hrs**  
**£15 per head**

New members welcome



## PAWS AND CLAWS

★ ★ ★ ★ ★

### Boarding Cattery

*"Cats have a 'tail' to tell when they've 'paws'd' awhile at Wansford's 5 Star Purr Palace"*

**Tel 01780 782174**  
**e-mail**  
[pawsandclaws@hotmail.com](mailto:pawsandclaws@hotmail.com)



Working with Peterborough Cat Rescue to rehome cats and kittens seeking loving homes and laps on which to purr

Peterborough City Council & Rutland County Council  
 Licence Number: 078015



## Georgina's

Curtains & Keepsakes

### Covering all the Villages

Stamford to Stibbington  
 (and everywhere inbetween!)



Bespoke handmade curtains, roman blinds and soft furnishings to complement your home.  
 For a free consultation and quote call 07957 686595  
[www.georginascurtainsandkeepsakes.com](http://www.georginascurtainsandkeepsakes.com)



# PETER RIDDINGTON LANDSCAPING

We supply and install Patios & Pathways, Decking, Stone Walls and Fencing, We plant Trees, Shrubs Hedges and Flowers, and offer a complete Garden Maintenance and Improvement Service. Garden design service provided  
 Contact Peter Riddington today for a free quotation

4 LOCKS GREEN, YARWELL, PETERBOROUGH PE8 6PY  
 Telephone: 01780 783004 Mobile: 07860 962068  
 Email: [peter@peterriddington.co.uk](mailto:peter@peterriddington.co.uk)





# Helping people build successful businesses and personal wealth for almost a century

## Our services include:

- Audit and Accountancy
- Business Acquisitions and Disposals
- Business Plans and Projections
- Corporate and Personal Taxation
- Grant Funding
- Payroll, Bookkeeping and VAT
- Tax Planning and Mitigation

For more information,  
please contact us:

 **01733 560160**  
[moorethompson.co.uk](http://moorethompson.co.uk)

Peterborough | Spalding | Wisbech | Market Deeping | Stamford

Moore Thompson is registered to carry on audit work in the UK  
by the Institute of Chartered Accountants in England and Wales.

## WANSFORD PARISH COUNCIL



Wansford Parish Council met on 14 October 2024, 6 councillors were present and Cllr Gavin Elsey from PCC

Minutes of previous meeting approved

### **Nene Close Parking**

WPC held a meeting with Nene Close residents on 4th October. it was noted that there were 4 objectors to the proposal to construct new parking bays to the north of the play area. No agreement on an alternative solution could be found. Having explored several options, WPC cannot progress the parking issues any more. It is now up to the residents of Nene Close to propose their own solution.

Untaxed and unused vehicles in Nene Close have been repeatedly reported to the relevant authorities with no tangible result.

### **Accounts**

Planned expenditure was approved.

### **WPC Standing Orders**

Amended standing orders agreed at a special meeting were approved and are posted on the WPC website.

### **Bus Campaign group.**

The feedback from people using the service has been fantastic. People have been able to secure work previously unobtainable through lack of transport, people are accessing shops and medical appointments independently for the first time in over 4 years, and crime has reduced in Wittering where young people are now able to get out and do practical things to alleviate boredom.

### **Wansford Grade 1 Stone Bridge and HGV's**

PCC are carrying out fresh surveys prior to commenting further.

### **A1 Traffic in the village.**

There have been a number of instances where careless impatient drivers have damaged parked cars in Bridge End. Another reason to slow the traffic over the bridge.

### **Village Notice Boards.**

The Nene Close notice board has been refurbished and is available for non Parish Council notices. The main Parish notice board by the Church is also to be repaired and refurbished.

### **Village Benches**

A new bench has been installed by The Parish council on Old Leicester Road near the entrance of Robins Field.

### **Planning**

24/00945/FUL It is noted that External insulation to 2,4 and 25 Nene Close has been approved by PCC, It is disappointing that the new render is to be White rather than a more appropriate colour.

### **A47 Dualling**

WPC are awaiting further updates from Highways England, We are hopeful the works will start in the Summer after new contractors are appointed.

**Cllr Martyn Handley**



## SIBSON-CUM-STIBBINGTON PARISH COUNCIL

The Parish Council will meet on the 7th November at 7pm in the Christie Hall. A report will appear in a future copy of Living Villages.

## THORNHAUGH PARISH COUNCIL

The next Thornhaugh Parish Council Meeting will take place at **7.00 pm on 11th November 2024** in St Andrew's Church, Thornhaugh. A report will appear in a future copy of Living Villages.



## Bench Love in Thornhaugh

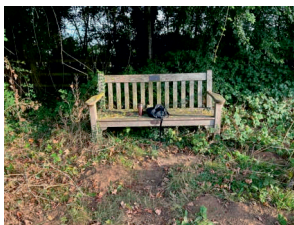
This is what Facebook driven community results in. So proud of the 5 people involved in using their different skills to revitalise this bench on

Russell Hill, just outside Thornhaugh village. Once the grass regrows and the bulbs are planted and blossomed, it will look amazing.

Do feel free to rest awhile and enjoy it.

Team work and community spirit make things happen.

Nikki Higgins



# Augean Community Fund

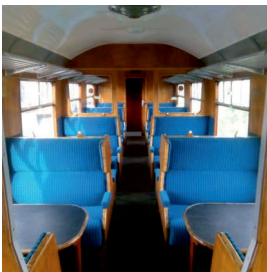
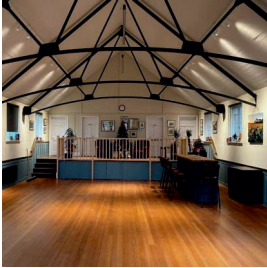
## October 2024

The **Augean Community Fund** uses monies provided by Augean under the Landfill Communities Fund.

The company's donations relate to its two landfill operations located at Thornhaugh near Peterborough, and King's Cliffe in Northamptonshire.

Recommendations on all grants from the Fund are made by King's Cliffe Environmental Association (KCEA) and Thornhaugh Environmental Association (TEA).

These two committees comprise volunteers from the villages of King's Cliffe, Thornhaugh and nearby, who are best able to represent local community priorities.



### Who can apply?

Groups with projects that are located within 10 miles of the King's Cliffe landfill site or the Thornhaugh landfill site may apply for grants. Priority will be given to applications received for projects located within 5 miles of Augean's Thornhaugh and King's Cliffe landfill sites.

### What can you apply for?

Grants are available for capital improvement works to public amenity projects. Examples may include:

- Village halls
- Nature reserves
- Village greens
- Community centres
- Public playgrounds
- Cycle paths
- Sports fields
- Sports facilities
- Country parks

You can apply for grants of between £5,000 and £50,000.

Projects must be available and open to the general public as defined by ENTRUST (the Landfill Communities Fund regulator), as a minimum, for 4 evenings a weeks, or 2 days a week, or 104 days a year.

### Where can you find out more?

For more information about the Fund and how to apply, please visit GrantScape's website.

If you have a project idea that you would like to discuss before you apply, please contact the GrantScape team on:

**Telephone: 01908 247630**

**Email: [info@grantscape.org.uk](mailto:info@grantscape.org.uk)**

**[www.grantscape.org.uk](http://www.grantscape.org.uk)**

### Application Closing Dates

There are usually two funding rounds each year, the next two closing dates are:

**Wednesday 13 November 2024**  
decisions by end Jan 2024

**Wednesday 07 May 2025**  
decisions by end July 2025

# Home Care & Support

Living independently at home is something most of us would like to do for as long as possible. However, there are times when we all need a little support with daily living tasks such as personal care and this is where Care Reserve can help.

## What are the benefits of Care Reserve home care?

- Help for everyday tasks, social activities or personal care
- You are at the centre of your own care and support at all times
- 24/7 support from a dedicated and highly trained team
- Support from local people, who know your area.

[admin@carereserve.co.uk](mailto:admin@carereserve.co.uk)

Workspace House Peterborough,  
28 - 29 Maxwell Road  
Peterborough PE2 7JE

Tel: 01733 396164; MB 07546251724

Our latest CQC rating:

 <b>Care Quality Commission</b>  <b>Overall Good</b>	Our latest CQC rating:	
	Safe	Good
	Effective	Good
	Caring	Good
	Responsive	Good
	Well-led	Good

Our Clients



Inspected and rated

Good



**Care Quality Commission**



**Milton Keynes City Council**



**Care Reserve**  
Bridging the gap

## Something to contemplate

Life is a gift. In my mind, that is an undisputed fact. Of course, no one wants to say yay or nay to that statement, but I have no doubt whatsoever about it. I also believe that behind such a precious gift is Love. A love so powerful that it gives life to every human being that has ever walked upon the earth. All living things on the earth have been spawned by the universe. The substance of our physical bodies has always existed in one form or another. Our difficulty is that many of us don't look on life as a gift. Rather we look upon it as an absolute right. We control our destinies without a moment's thought and the unconcerned masses, never take the time or make the effort to try and discover the reason why we are even born into such a mixed-up world. Looking outside the planet on which we live and which we think we know to try and understand, never seems to occur to us. We are too engrossed in our day to day lives and the pursuit for happiness to bother about such trivial things. Oh yes, from time to time there is an occasional flurry of interest in UFO's when somebody catches sight of an unexplained natural happening in the night sky, but then we go back into our darkened shells and settle down to our comfortable three score years and ten, putting aside the fact that one day, our life on earth will come to an end. That's to worry about tomorrow..... not today. To begin with, and from what we now know and assume, the universe has been there for billions of years and if you were to ask the astrophysicist his opinion, it will be around for more and more billions of years to come. What then is the reason for mankind and his infinitely short time of a life on this earth. It seems to me that there is only one answer and that is Love with a capital L. Love is as much, if not more about giving than receiving so what if somebody or something formed and created us humans out of a Love so deep and great that we cannot comprehend its fullness in this life. ....

*When I consider your heavens, the work of your fingers. The moon and stars which you have ordained, what is man that you take thought of him? You have made him a little lower than God and you crown him in glory and majesty. You make him to rule over the works of your hands. You have put all things under his feet, all sheep and oxen, also the beasts of the field. The birds of heaven and the fish of the sea, whatever passes through the path of the seas. O Lord, O Lord how majestic your name is in all the earth.*  
**Psalm 8 NIV**

I believe that you and I, like the universe, were formed out of that amazing and undisputed Love. Do you have another answer?

**DAVID B JOHNSON**

### COFFEE+ CAKE + COMMUNITY

**WHEN**

**FIRST FRIDAY OF  
THE MONTH**

**10.30 - midday or anything in between  
Friday 5th Nov**

**WHERE**

**Thornhaugh Church**

**COST**

**£3**

**FEATURING • Cafetière coffee and  
delicious cakes.**

**In future we aim to have crafts, puzzles  
and games if there is interest .**

**EVERYONE  
WELCOME**

**AT THE DOOR  
£3 for coffee and  
cake ( free for  
bakers).**

**CCC. A SPACE TO  
CATCH UP IN COM-  
MUNITY**

**QUESTIONS OR  
OFFERS TO BAKE**  
miki@4stonecottage.co.uk



## FRIENDS OF ST REMIGIUS WATER NEWTON

### A FAMILY LATE HARVEST FESTIVAL and LUNCH 3rd November at 1 pm

Our next service at St. Remigius will take place on Sunday 3rd November.

All from our villages are most welcome. As this is our Harvest Festival, we will gratefully receive any donated tinned or dried foods which will be delivered to the Peterborough Food Bank.

Following the service, we will enjoy a late harvest lunch. We will request a small donation towards the lunch.

This is a family service and children will be most welcome.



**JASMINE MASSAGE & SPA**  
TEL: 01733 813385  
WWW.JASMINEMASSAGE.CO.UK

**Deep Tissue Massage, Swedish Massage, Thai Aromatherapy**

**Infrared Sauna**

**Open - 10am to 8pm Monday to Sunday**  
**Book Online or Walk In**  
**www.jasminemassage.co.uk TEL: 01733 813385**  
**Gift Vouchers** available for any occasion  
7 Wentworth Street, Peterborough, PE1 1DH

**Gift Card**



## LETTERS TO THE EDITOR

email [craig@ascotgraphics.co.uk](mailto:craig@ascotgraphics.co.uk)

Dear Editor and local residents

You may or not be aware that Huntingdonshire District Council is now actively considering many new housing sites that are being put forward for their Local Plan.

Of particular relevance to Wansford (North & South), Elton & Stibbington is the proposed Sibson Garden Village (4,500-5,000 homes), which is being proposed for a large swathe of land around Sibson Airfield. I have attached a picture, which I have marked up to help get your bearings plus a list of the published developer's intentions. I am not sure how many houses are in Wansford (North & South) but this will be over 10X bigger

If you support or object, you have until 27th Nov to register and comment. It's important that HDC receive as many individual submissions as possible to give them a clear view of local resident's opinion.

I found the on-line portal to be quite clunky and difficult to navigate. Therefore this QR code takes you directly to the Sibson development pages and the direct link to add your comments:

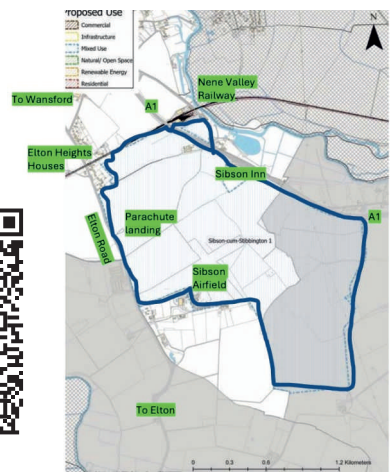
Talking with a planning officer at Yaxley drop-in meeting, it is also okay to send your comments to [local\\_plan@huntingdonshire.gov.uk](mailto:local_plan@huntingdonshire.gov.uk). Whilst being sympathetic to new homes, I must admit being very concerned about the impact on our beautiful Wansford, regards increased traffic (domestic & construction), pedestrian safety and damage to our bridge. The nature of Wansford conservation area could be irrevocably damaged.



Gary Punter

### Promoters Intentions

- 4,500 homes
- circa 240 continuing care retirement community homes (circa 3.12ha)
- circa 50 plots for self and custom build housing
- EcoDynamo Sustainable Business Park to comprise 87,500 - 100,000sqm of floorspace
- SGC Town Centre to be circa 4.43 ha, comprising retail, leisure and community uses
- Commercial leisure uses to be included within the town centre
- 1 new secondary school (6FE), 2 new primary schools (3FE) and 1 new primary school (2FE), nursery and community centre
- circa 0.35 ha for medical centre(s)
- Realignment of A1 and new junction (11.37 ha), parking areas within the town centre
- Renewable energy park, principally solar, part standalone at circa 20 ha
- Minimum of 41.5 ha of formal open space plus 51.5 ha of additional informal open space
- 92 ha of formal and informal open space to achieve 15% biodiversity net gain
- 0.4 ha required for specific attenuation features plus additional land within 92 ha of open space





## THE ARTS SOCIETY PETERBOROUGH

The Arts Society is a leading arts education organisation that brings people together through a shared curiosity for the arts. Each year The Arts Society Peterborough (TASP) holds nine illustrated talks given by experts in their field on subjects ranging widely, including old Masters, modern sculpture, silver jewellery, the work of David Hockney and music in art. The talks are held at

The Fleet in Fletton Peterborough on the second Thursday of each month except June, July and August. The talks start at 10.45 am but you are welcome to come earlier and meet like-minded people for a chat over a cup of coffee, doors open at 10.15am. Non-members are always welcome, so come and join us!

In addition to the live talks, annual members also receive other benefits. If you wish to find out more about our Society or about becoming a member, please visit our website, [www.the-arts-society-peterborough.org.uk](http://www.the-arts-society-peterborough.org.uk) Our next two talks are:

### 14th November 2024

**'The twelve Plants of Christmas', with Timothy Walker, lecturer in Botany and Plant Conservation and ex Director of Oxford Botanic Garden.**

This talk puts the record straight and rewrites the zoocentric song replacing partridges with poinsettias, and maids with mistletoe.

### 12th December 2024

**'What is an Original Print?' with Dr Susan Owens an art historian, writer and curator.**

This talk demystifies the idea of the 'original print', and offers clear explanations of the processes involved in printmaking techniques including engraving, etching, drypoint, wood-engraving, wood-cutting and lithography.



### Plumbing & Heating

- Boiler Replacement
- Boiler Repairs
- Cylinder Changes
- Heating Systems
- General Plumbing
- Heating Controls

### Bathrooms

- Bathroom Installation
- Baths / Basins
- Toilets
- Wetrooms

**Contact us today to discuss your requirements!**

**Mobile: 07846 428600 / Office: 01733 590501**

**Email: [james@willowservices.co.uk](mailto:james@willowservices.co.uk)**

**[www.willowservices.co.uk](http://www.willowservices.co.uk)**



# VAL-TECH SOLUTIONS

"Excellence comes as Standard"

## Professional Valeting

Call Adrian on  
**07971966515**

### Mobile valeting services

'Professional' valeting carried out at your home or place of work. Our fully equipped vans are self-sufficient with water and power. Only top quality products used to complete your valet to a high standard.

Private and corporate work undertaken, Guaranteed professional results from Professionally trained valeters.

Full range of valeting programmes available: Mini valets to full detailing work and paint rectification

Please call us on – 07971 966515 for your booking or enquiries



**VAL-TECH SOLUTIONS LTD**

Peterborough

07971966515 [adrian@val-techsolutions.co.uk](mailto:adrian@val-techsolutions.co.uk) | [www.val-techsolutions.co.uk](http://www.val-techsolutions.co.uk)







**GRAND VIEW**  
CARE HOME

inspected and rated  
**Good**  
Care Quality Commission

**PROFESSIONAL CARE  
YOU CAN TRUST**

*A home like no other*

**We Offer:**

- Luxury setting + Fabulous Views
- Outstanding Care
- Excellent Food / Own Chef
- Cinema, Gym and Hairdressing Salon
- Nurses on duty 24 hrs a day
- Private Dining Facilities
- Beautiful Café and Bar
- All Inclusive Fees, No Hidden Extras

**Residential | Dementia | Nursing & Respite Care**





**Call us now**  
**01780 432610 / 07551 945608**

Grand View Care Home  
Uffington Road Stamford Lincolnshire PE9 2EX

grandviewcarehome  
grandviewcarehomeuk  
laura.mills@stjamescarehome.co.uk  
www.grandviewcarehome.co.uk



**yes  
you  
can**  
with  
**Slimming  
World**

*Come along and say hello  
at our Wittering Group*

**Wittering Parish Hall  
Townsend Road  
PE8 7TG**

*Every Wednesday at  
5pm or 6.30pm*

**Contact:**  
**Debra 07880567310**

**slimmingworld.co.uk**

**Slimming  
WORLD**  
touching hearts, changing lives



**Just ask**

Making the right decisions can be stressful at the best of times, but we are here to help. Whatever's on your mind, just ask.

**TOBIAS COLTON** BA(Hons) DipPFS  
Principal  
**TOBIAS COLTON WEALTH MANAGEMENT**  
Associate Partner Practice of St. James's Place Wealth Management  
07468 428 380  
tobias.colton@sjpp.co.uk  
www.tobiascoltonwealthmanagement.co.uk



**ST. JAMES'S PLACE**  
WEALTH MANAGEMENT

The Partner Practice is an Appointed Representative of and represents only St. James's Place Wealth Management plc (which is authorised and regulated by the Financial Conduct Authority) for the purpose of advising solely on the group's wealth management products and services, more details of which are set out on the group's website www.sjp.co.uk/products. The 'St. James's Place Partnership' and the titles 'Partner' and 'Partner Practice' are marketing terms used to describe St. James's Place representatives.

SJP12026 V1 (04/20)

## NEWS FROM WANSFORD AND KINGS CLIFFE PRACTICE

### **IT IS NOT TOO LATE TO HAVE YOUR FLU JAB!**

**If you are eligible you can still book an appointment at either Wansford or Kings Cliffe for your flu jab.**

**You are eligible if you are over 65 or have a long term condition such as diabetes, asthma, COPD, etc. Our reception staff will be happy to check eligibility.**

**You may also be eligible for pneumococcal, shingles and RSV.**

**Please enquire at reception.**



## **Castor & Ailsworth Scouts AGM - 4th December**

The 63rd Peterborough (St Kyneburgha) Scout Group, which meets in Castor, has its Annual General Meeting on 4th December. This is our annual opportunity to appoint new trustees to the board, who help make sure the Beavers, Cubs, Scouts and Explorers continue to have brilliant experiences with the group.

The trustee board would welcome anyone with energy, enthusiasm and a little time to help the group run smoothly. No prior experience of scouting or being a trustee is required, and no specific skills or knowledge are needed. We would, however, be particularly keen to hear from anyone with legal, public relations, human resources or general professional skills.

The board meets every couple of months, usually in the evening. If you are interested in becoming a trustee, please contact Nathan Binmore on [gsl@63rdpeterborough.org.uk](mailto:gsl@63rdpeterborough.org.uk) for an invite to the AGM.



**Call Glen anytime on 07771 784643**

## **Boat Hire on The River Nene**

Day/Weekend/Long term hire

Gilly fishing trips (full kit available)



## **Local Fabrication and Site Welding**

Repairs or New Builds

Gates/Fences/Farm Machinery

Any job never too small



## **Local Log Delivery**



All logs cut to order

Mobile logging service

Mobile log splitting service

Dead tree felling service

## Wansford Horticultural & Craft Society

On Thursday 10th October: we had a delightful talk from the **National Garden Scheme**. Many of you will know about NGS because of the yellow book, which advertises Open Gardens with glorious teas & coffees. What we did not realise is the history of the NGS linking back to the origins of district nursing and that the the NGS is now the biggest charity donor into the health care system in the UK. A very worthy cause and we got a sneak preview of the gardens to be opened locally in 2025.



We also had a bit of fun and ran our own bulb auction. We sold 6 lots of tulips & alliums for £133 to add to the previous £450. It was great to see a good turnout (28) for the evening.

Gary Punter



### ***Horticultural Society Traditional Christmas Social***

7pm, Christie Hall, Saturday 30<sup>th</sup> November, £15

*A Thank You evening with friends.*

- *Great roast pork dinner (veg option available)*
  - *All drinks included*
  - *top quality food sourced locally*
  - *cooked by your committee.*
- *We will share our events for 2025 and AGM update*
  - *Xmas tree & table decoration competition*
  - *Raffle & our popular quiz.*

***Book Now***

Contact [rhonapunter@aol.com](mailto:rhonapunter@aol.com)



## Nene Valley Railway - Christmas at the Railway: A North Pole Adventure

This year Nene Valley Railway have launched an all new, never seen before Christmas experience, Christmas at the Railway: The North Pole Adventure.



We are very excited to share this experience with our visitors, whether they have been coming for generations or for the very first time. This is our biggest family event of the year and has been put together with Darling Princess Parties.

This is a fully immersive festive experience with 14 professional actors, as well as our wonderful volunteers and will see visitors journey through our autumn forest, snow frosted portal and Santa's workshop where the children will help the elves make toys before meeting Santa and Mrs Claus to receive their gift. Tickets will include a round trip on the train with on train performers and the whole event will last approximately one and a half to two hours.

This new experience will not include our usual food service, however our on-site café franchise, Origin8 have put together a food offering that people can pre-order from their website and collect prior to boarding the train.

For many years Nene Valley Railway ran the Santa Specials, which were very popular. This has raised the question with some as to why the change? The Santa Specials require a lot of volunteers to run to the standard that people expect. Unfortunately, last year was a real struggle to get the volunteer numbers required for each running day and unexpected sickness leaves us having to find replacements for key people, sometimes at cost. Our new experience will allow volunteers to take part in the event while removing some of the stress and pressure from them and ensuring high standards are maintained. Response to Christmas at the Railway has been largely positive and tickets sales are performing very well. We are confident this will become a firm favourite with our visitors. After all, the Santa Specials were new once too!

Christmas at the Railway will run on selected dates between **30th November and 24th December**. We have an accessibility coach available on some of those dates, for which people who have mobility issues are encouraged to phone us in order to book their seats as these cannot be booked online. We also have our Festive Lounge, which seats up to 16 people in their own private carriage with a dedicated Elf to entertain them. These are nearly all sold out!



Adult Standard Ticket £35.00  
 Child Standard Ticket (1 to 15 years old) £35.00  
 Child Standard Ticket (Under 1 years old) £5.00  
 Compartment (Up to 8 people) £225.00  
 Festive Lounge (Up to 16 people) £640.00

For the accessibility coach, our contact number is 01780 784444 and for all other bookings, the web address is: <https://nvr.org.uk/product.php/510/the-north-pole-adventure>

We understand that residents are having some difficulty accessing the Portal to make their observations and concerns, and have their say regarding the Sites at Sibson, Chesterton and Allwalton.

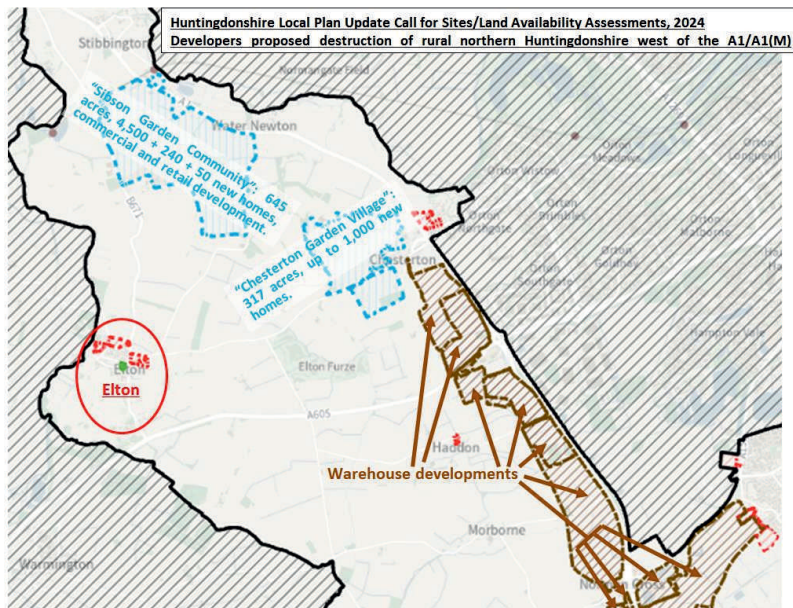
Below is a path to follow to enable engagement regarding the proposed sites.

.....

**Sibson Garden Community** – the site developer proposes 4,500+ houses, one new secondary school, three new primary schools a nursery and community centre as well as residential care for the elderly.

**Chesterton Garden Village** - Up to 1,000 homes Primary school, community building, supporting retail (e.g. local shop), mobility hub, sports pitches

**Chesterton - Land West of A1 (North of Peterborough Motorway Services)** - The developer is seeking permission for the construction of industrial distribution units, warehousing with accompanying offices.



*Map detailing all proposed sites in and around Elton*

If you wish to make comment concerning this proposed development on these proposed developments in the local area, then please see the attached HDC Land Availability Assessments – ‘How to Comment’ document. Alternatively, where you can view this document and follow the link <https://consult.huntingdonshire.gov.uk/kse/> to the Huntingdonshire District Council website to comment.

## **Huntingdonshire District Council Land Availability Assessments**

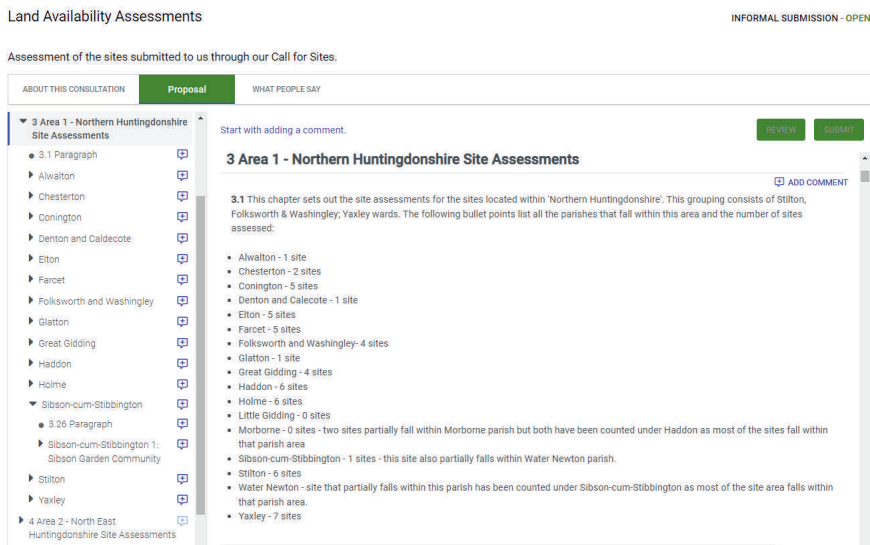
### **How to Comment**

The potential construction of all proposed housing developments on larger sites at Sibson, Chesterton and Great Haddon progressing to the Local Plan, would have immeasurable impact on the surrounding countryside, causing irreversible damage to the beauty of the landscape that we are lucky enough to enjoy. If you wish to respond and make a comment the following instructions are designed to help you register, login and find the Land Availability Assessments pages, using Sibson Garden Village site as an example:

1. Start by going to Huntingdonshire Districts Council's consultation page using the link below to locate the consultation portal.  
<https://consult.huntingdonshire.gov.uk/ksc/>
2. Once you have reached the site, scroll down to **'Land Availability Assessments'** the second box down on the left-hand side.
  - a. Please note to comment you need to **'Register'** shown in blue toward the bottom of the Land Availability Assessments box. (If you do not wish to comment initially you can view the site information you would like to look at by clicking on **'Respond'** and following the instructions from point number 3).
  - b. Note when you have registered HDC will send you an email to confirm its you. This may go in to your **'Junk'** folder. **You need on the link to confirm its you** and you should be returned to the login area within Land Availability Assessments. The webpage link should be the same as the one shown below.

<https://consult.huntingdonshire.gov.uk/ksc/event/38140/section/>

3. Click on **'Respond'** in the Land Availability Assessments box. On the lefthand side scroll down to **3 Area 1 – 'Northern Huntingdonshire Site Assessments'** Click on the small black arrow that is next to this area. You should then have a drop down of the sites within that area starting alphabetically with Alwalton – **See Screenshot 1.**



**Screenshot 1**

4. Click on the black arrow next to **Sibson-cum-Stibbington and Sibson Garden Community** should be visible – **Screenshot 1.**

Assessment of the sites submitted to us through our Call for Sites.

ABOUT THIS CONSULTATION

Proposal

WHAT PEOPLE SAY

▼ 3 Area 1 - Northern Huntingdonshire Site Assessments

3.1 Paragraph

Alwalton

Chesterton

Conington

Denton and Caldecote

Elton

Farret

Folksworth and Washingley

Glatton

Great Gidding

Haddon

Holme

▼ Sibson-cum-Stibbington

3.26 Paragraph

Sibson-cum-Stibbington 1: Sibson Garden Community

Stilton

Yaxley

4 Area 2 - North East Huntingdonshire Site Assessments

5 Area 3 - Northern Central Huntingdonshire Site Assessments

Start with adding a comment.

REVIEW

SUBMIT

ADD COMMENT

Sibson-cum-Stibbington 1: Sibson Garden Community

Site reference	Sibson-cum-Stibbington 1	
Site name	Sibson Garden Community	
Site address	Parish(es)	Site area (ha)
Sibson Garden Community	Sibson-cum-Stibbington; Water Newton	The site was originally submitted for 350.9ha of land but this was later revised and the site now only includes 260.9ha of land

Promoter's Intentions

Promoter's anticipated uses	Promoter's capacity	Promoter's delivery expectations
	<ul style="list-style-type: none"> <li>4,500 homes</li> <li>circa 240 continuing care retirement community homes (circa 3.12ha)</li> <li>circa 50 plots for self and custom build housing</li> <li>EcoDynamo Sustainable Business Park to</li> </ul>	

### Screen Shot 2.

- Click on **Sibson Garden Community** to open the window for the site and click on the main title of the site again to open the window giving details of the site, where you can then add a comment (if you are already logged in) – **Screen Shot 2.**
- When you click on Add Comment you will see several questions for you to answer. **See Screen shots 3 & 4 for example questions (this is not the full response window but two screenshots to give you an idea of what is required).**

#### Local Plan Update

Please complete the questions below as fully as possible. Answers to questions marked \* are required.

Please note that this is an interactive form and additional questions will appear depending on the answers you give to particular questions.

Do you support development of this site?

☐ Yes
 ☐ No
 ☐ Unsure

We have assessed this site, do you agree, disagree or have observations on our assessment?

☐ Agree with assessment
 ☐ Disagree with assessment
 ☐ Have observations on assessment

Please write your comment here.

My comment

Do you think changes are needed to address the issue you have identified?

☐ Yes
 ☐ No

Please tell us what changes would address the issue(s) that you have identified.

It would be helpful if you could include revised wording of any policy or text. Please identify additional text by underlining it (U) and identifying any text to be deleted by striking it through (ABC).

What changes would address the issue(s) that you have identified?

↶ ↷

Paragraph

B

I

↵

↶

↷

↵

↶

↷

↵

↶

↷

Powered by Tiny

If you would like you can support your comment with documents.

If you want to refer to a publication that is available elsewhere or that is subject to copyright that you do not control please provide a link to the website where it is available or give a full reference (including author(s), full title and date of publication) in your comment.

By submitting a supporting document you give permission for the council to use it for the Local Plan update and to reproduce the document for such purposes.

### Screen Shots 3 & 4





The countryside charity  
Cambridgeshire  
and Peterborough

### **Winter Fuel Payment, the cost of living and rural communities**

CPRE Cambridgeshire and Peterborough recognises that our rural communities are facing a disproportionate impact from the wider economic crisis.

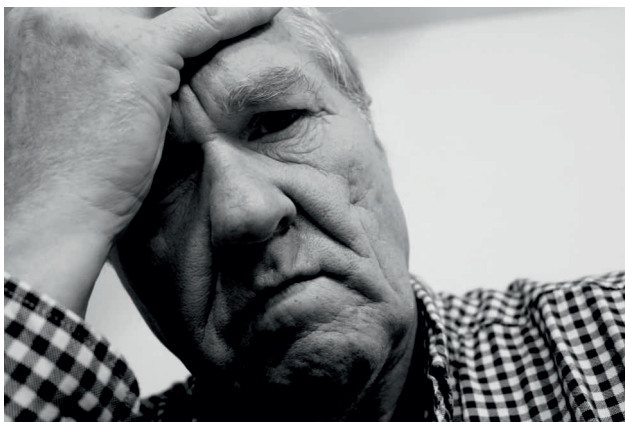
The Government has announced that future Winter Fuel Payments would only be made to those in England and Wales on low incomes who receive pension credit or other means-tested benefits, meaning millions of pensioners will no longer receive the payment designed to help with the cost of adequate heating.

Rural consumers often have to afford the high cost of oil, bottled gas, coal or smokeless fuel, which is paid for in advance. The pension increases coming into effect in April 2025 will be delivered in small payments in arrears, so they will not help this winter.

We've updated the Cost of Living support page on our website for those affected by the loss of the Winter Fuel Payment (<https://www.cprecambs.org.uk/cost-of-living-support.html>).

This page details resources to help with the cost of living, such as financial support, energy saving advice and warm hubs.

CPRE has joined the Warm This Winter' coalition calling for urgent action from the government. To add your voice, go to <https://www.warmthiswinter.org.uk/>.



# DIRECTORY OF CONTACTS

For all enquiries, contributions and adverts

<b>Craig Bunday</b>	craig@ascotgraphics.co.uk	07771 538661
<b>Ascot accounts</b>	accounts@ascotgraphics.co.uk	01487 801301

## Parish Councils

Sutton	Deirdre McCumiskey (Clerk)	01780 782668
Wansford	clerk@wansford-pc.gov.uk	
Sibson-cum-Stibbington	Margery Beuttell (Clerk@stibbington.org.uk)	
Thornhaugh	Deirdre McCumiskey (Clerk)	01780 782668
Water Newton (Parish Meeting)	Caroline Nathan (Chairman)	07989 362514

**City Councillor ( Wittering Ward) - Gavin Elsey** **07738930599**

## Churches

<b>Ministers:</b> Thornhaugh & Wansford	01780 782271
Stibbington, Sutton, Castor & Water Newton	01733 380900
<a href="mailto:admin.castor@btconnect.com">admin.castor@btconnect.com</a>	

### Churchwardens:

St Andrew’s Thornhaugh:	Stuart Foreman	01780 783220
	Liz Kemp	01780 782333
St Mary’s Wansford:	Caroline Ashley	01780 782408
	Alan Jones	01780 783205
St John the Baptist, Stibbington	Charlotte Bradshaw	01780 781805

### Friends:

St Mary’s & St Andrew’s	Caroline Ashley	01780 782408
St Remigius Water Newton	Jack Ward	01733 394646

## Other useful contacts

Neighbourhood Policing	101	P’boro City Council	01733 747474
Wansford Surgery	01780 782342	Royal British Legion	01780 782200
(Out of hours	111 option 4)	Stibbington & Wansford WI .	.781733
Wansford Pharmacy	01780 781616	Cricket Club	07860 278800
Communicare	01780 470437	Horticultural Society	01780 592514
H’don District Council	01480 388388	Stibbington Centre	01780 782386

**Website** **[www.livingvillagesmagazine.co.uk](http://www.livingvillagesmagazine.co.uk)**

©2024 Living Villages Magazine The contents of this magazine may not be copied, reproduced, distributed, republished, downloaded, displayed, posted or transmitted in any form or by any means without the prior written permission of Living Villages Magazine. You may not distribute, display or copy any of the contents of the pages contained in this magazine to third parties without the prior written permission of Living Villages Magazine. All images shown in this magazine are the property of Living Villages Magazine unless otherwise accredited to another. Images may not be used without the prior written permission of Living Villages Magazine or the accredited owner. Unless otherwise specified, the authors of the literary and artistic works in the pages in this magazine have asserted their moral right pursuant to Section 77 of the Copyright Designs and Patents Act 1988 to be identified as the author of those works. If permission is sort and given, it is expected that all articles/images be accredited to either Living Villages Magazine or the author of said articles/images. The views expressed in articles published are strictly those of the writer, and not of Living Villages. Living Villages cannot vouch for products and services advertised, nor accept any liability resulting from the purchasing of products or services, although care is taken to ensure their suitability.

Beat the midwinter blues!

## Book your next holiday with Kirstie

Here's why...

- She has a wealth of travel experience
- She offers world wide cover, guided tours, cruises and rail journeys
- She can tailor make your ideal package or multicentre itinerary
- She can sell packaged holidays such as Jet2, Kuoni and Easyjet
- She's with you 24/7 for customer support - even when you're on holiday!
- She offers 100% financial protection
- She is professional, friendly and caring

**MULTICENTRE • CRUISES • GUIDED TOURS**

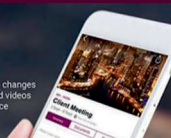
Why wait? Call **01767 360014** or **07815 814798**  
or email **kirstie.timmins@travelcounsellors.com**

**f kirstietimmins**

**myTC**

YOUR ONLINE ACCOUNT  
WITH TRAVEL COUNSELLORS

- Simple to use
- Available via Website and App
- Flight Alerts, inc. cancellations and gate changes
- Detailed hotel information inc. maps and videos
- All your travel documentation in one place



**travel  
counsellors**

# NORTON RICKETT

Local *Independent* Estate Agents

- Free Market Appraisals
- Probate Valuations (*RICS Surveyor*)
- Local – Office near Wansford
- Established & Trusted since 2012
- Advertising on Rightmove
- Office Presence in London

# NIR

NORTON  RICKETT

TOWN | COUNTRY | EQUESTRIAN

**www.nortonrickett.co.uk**

**01780 782 999**



# Crown

## Property Services

- 👑 Electrical & Plumbing
- 👑 Kitchens & Bathrooms
- 👑 Renovations
- 👑 Extensions
- 👑 Windows & Doors
- 👑 Groundworks
- 👑 Landscaping
- 👑 Internal Refurbishment

Old Sulehay Cottages, Sulehay Road, Wansford. PE8 6PA

**07766 168659**

jonathon@hibbins.me

# Village Pizzas

Open Tue – Sat for  
Collection / Eat-In at  
Leedsgate Farm  
4.30pm – 10pm

Or

Delivery 6pm till 10pm

**01780  
784587**

View our Menu at  
[www.villagepizzas.co.uk](http://www.villagepizzas.co.uk)



# Justine

BROMAGE FITNESS

Mat based Pilates and Chairobics

Classes for all levels

## MAT BASED PILATES

1 hr classes

Online on Zoom, or in person at  
Christie Village Hall (Wansford) and Harringworth Village Hall

Monday, Tuesday, Wednesday and Thursday

£4 online / £6 in person



Justine Bromage  
Fully Qualified Level 3  
Pilates Instructor  
Level 3 Personal Trainer  
RSA To Music Instructor

Ease back pain  
Strengthen your core, abs and back  
Improve sports performance  
Exercise without joint pain  
Increase your flexibility  
Boost brain power and focus

Christie Village Hall:  
16.45 and 18.00 Monday  
12.30 Wednesday

Online:

All the above times streamed  
plus 11.00 and 12.30 Tuesday  
11.30 Thursday

**justwhim@hotmail.com**  
**07919 106156**

 **Greenwood  
homecare**

## Award-winning home care in Peterborough

- ✓ Personal Care
- ✓ Companionship
- ✓ Complex Care
- ✓ Medication Support
- ✓ Live-In Care



**01733 808531**

[peterborough@greenwoodhomecare.co.uk](mailto:peterborough@greenwoodhomecare.co.uk)  
[www.greenwoodhomecare.co.uk](http://www.greenwoodhomecare.co.uk)