

# *Living Villages*



*May 2023*

*Water Newton Thornhaugh  
Stibington Sutton Wansford*

## Tough decisions for UK investors

Forcing people to pay more tax on their hard-earned savings is not a popular policy for governments but it is something that UK investors face in the upcoming financial year after chancellor Jeremy Hunt confirmed a reduction to the capital gains allowance from April.

For investors, the most obvious effect on their savings is that any investment held outside an ISA or pension will be subject to capital gains tax.

• **These tax hikes mean that owning assets outside of tax effective wrappers is getting more expensive. One option available to investors is the often overlooked 'Bed and ISA', which is when any savings held in a general investment account are transferred over to an ISA.**

If you're planning to gift assets to someone else, then it could be worth making use of your annual CGT allowance this year before it's reduced. Many people don't realise that you also owe capital gains tax on assets gifted to someone else.

• The gain is based on the market value at the time of the gift but tax planning decisions are complicated and it's important not to let the tax tail wag the financial planning dog."

**Simon Every AwPETR Adv DipFA Chartered ALIBF - Hill Grafford**

*Is it time to consider how your assets are invested?*

### Our Aim at Hill Grafford

To be there as an expert who knows you and your family personally to the extent that we can customise a financial plan that exactly fits your personal requirements.

We provide Holistic Advice on

- Long term care investment solutions
- Pension & investments
- Offshore and onshore tax planning
- Inheritance tax solutions
- Setting up of Trusts based investment solutions

## We're here to help.

We were rated a Top Rated Financial Adviser for 2020 and 2021 - as distributed in The Times

Speak to one of our Local Chartered Financial Advisers today on

**01780 784310 or 07967 015 805**

**[www.hillgrafford.co.uk](http://www.hillgrafford.co.uk)**

A copy of client reviews can be emailed upon request.



## Editorial

Dear readers

As this edition drops on your doormat, preparations will be nearly complete for the Coronation Weekend. This is something that the vast majority of us will have never witnessed in our lifetime, and there is much going on – details are throughout the magazine. The planned Street Party in Wansford that we advertised last month has unfortunately been cancelled, however in it's place the Wansford and Sibson-cum-Stibbington Parish Councils are putting together a full programme of events over the weekend, including a picnic in The Haycock Field, Full details are on the centre pages. I am sure that next month's Living Villages will have reports of all the events going on across the Parishes.

On page 24 I'd like to highlight the litter picks, especially the one planned for immediately after the Celebrations on Monday 8th May – volunteers would be most welcome.

As well as all the usual reports from the councils and societies, I do once more want to put a plea out for a volunteer distributor for the New Lane/Sibson Airfield round. It doesn't have to be someone who lives there, but it would make things easier. Please get in touch – our contact details are on page 30.

Enjoy all your Bank Holidays (there are three!!) before our June edition.

Best wishes

Craig

### Contents

6	Worship & Benefices
10	Stibbington and Wansford W.I.
18	Parish Council Notices and Minutes
25	Wansford Horticultural & Craft Society
30	Contacts

### Studying for a course?- Did you know you can apply for a grant?

Since the early 1990s the **Reverend Thomas Woolsey's Charity** has been giving for equipment to all students from Thornhaugh and Wansford for further education, apprenticeship or skills.

The Trustees of the charity will be meeting in September to allocate the grants, so there is plenty of time for any student to apply. Go to the website [thewoolseycharity.co.uk](http://thewoolseycharity.co.uk) to for more information and complete the application form.

Lisa Chambers, Secretary, Rev. Thomas Woolsey's Charity

# THE TEA POT Wansford

## JOIN US:

- Tea/coffee & biscuits
- Cake
- Companionship
- All welcome
- Free

**ALTERNATE MONDAYS  
NEXT MEETING 1ST MAY  
2023 AT 10 AM - 12 PM**



**WANSFORD COMMUNITY HALL  
PETERBOROUGH ROAD**



to find out more about warm spaces visit:  
[www.goodneighboursrp.org.uk](http://www.goodneighboursrp.org.uk)



# NEED A RECOMMENDATION?

The **ONLY** Police Checked recommended register of local approved traders

**FREE** and **EASY** service



Much more than just a recommendation ...

## Serving the PE Postcode community since 2008

Over 70 different trade categories and over 17,000 reviews

Here are some of our members ...

### New Garage Door & Repairs

**GARAGE DOOR & SHUTTER SERVICES**  
www.garagedoorandshutterservices.co.uk  
Call Dave on  
☎ **07709 337647**

### Electrician

**OLD COURT ELECTRICAL**  
www.oldcourtelectrical.co.uk  
Call David on  
☎ **07973 507420**

### Carpet & Upholstery Cleaning

**STAINBUSTERS**  
CARPET CLEANERS PETERBOROUGH  
www.peterborough-carpetcleaners.co.uk  
Call Steve on  
☎ **07818 058490**

### Building & Carpentry Services

**Steve Deprez & Son**  
Building • Brickwork • Carpentry  
Preserving the past. Building the future.  
stevedeprezbuilders@gmail.com  
Call Steve on  
☎ **07414 292188**

### Driveways, Patios & Hard Landscaping

**STYLE**  
HOME IMPROVEMENTS LTD  
www.styleimprovements.com  
Call Tony on  
☎ **07879 881315**

### Gutter Cleaning & Repairs

**THE GUTTER CLEAN COMPANY**  
www.guttercleancompany.com  
Call Jeremy on  
☎ **0800 179 9363**

### Double Glazing Repairs

**Nene Valley UPVC**  
REPAIR & MAINTENANCE  
www.nenevalleyupvcrepairs.co.uk  
Call Andrew on  
☎ **01733 576397**

Thousands of Reviews



**Keeping it Local**

in association with ...



To see our full list of members and read all reviews just go to ...

**www.safelocaltrades.com**  
☎ **0800 014 1832**



The safest way to source local traders

Tear out page and keep



# WORSHIP DATES

Every Sunday 5.00pm - Zoom 'At Home' Service. Log in and phone details from Rev. Jane [jdtailby@aol.com](mailto:jdtailby@aol.com) 01780 782271

St. Leonard's, Apethorpe

7 <sup>th</sup>	11.00 a.m.	Holy Communion and Coronation Thanksgiving
21 <sup>st</sup>	11.00 a.m.	Holy Communion

St. Mary's, Wansford

Every Wednesday 10.00 a.m. Morning Prayer

7 <sup>th</sup>	9.30 a.m.	Celebration Service for the Coronation
14 <sup>th</sup>	9.30 a.m.	Holy Communion
28 <sup>th</sup>	9.30 a.m.	Holy Communion

St. Mary's and All Saints, Nassington

Every Thursday 9.30 a.m. Holy Communion BCP

7 <sup>th</sup>	8.15 a.m.	Holy Communion BCP
7 <sup>th</sup>	9.30 a.m.	All Age Communion and Coronation Thanksgiving
14 <sup>th</sup>	NO SERVICE	
21 <sup>st</sup>	9.30 a.m.	Holy Communion
28 <sup>th</sup>	9.30 a.m.	Family Service and Crafts

St. Mary's, Woodnewton

7 <sup>th</sup>	9.30 a.m.	Holy Communion and Coronation Thanksgiving
14 <sup>th</sup>	6.00 p.m.	Evensong followed by APCM
18 <sup>th</sup>	7.00 p.m.	Ascension Day Communion Service
21 <sup>st</sup>	9.30 a.m.	Holy Communion
28 <sup>th</sup>	8.30 a.m.	Holy Communion BCP

St. Andrew's, Thornhaugh

7 <sup>th</sup>	NO SERVICE	
21 <sup>st</sup>	9.30 a.m.	Holy Communion

St. Mary Magdalene's, Yarwell

5 <sup>th</sup>	7.00 p.m.	Vigil Service of Prayer before the Coronation
14 <sup>th</sup>	11.00 a.m.	Holy Communion
21 <sup>st</sup>	3.00 p.m.	Methodist Service
28 <sup>th</sup>	11.00 a.m.	Holy Communion



**Suk's Sensations**

Learn to cook delicious authentic Indian curries  
using fresh ingredients and real Indian spices

"Hi, I'm Suk and I will be providing 2 hour demonstration sessions at my home in Sutton for small groups focussing on different recipes in each session. It will be good opportunity to learn new skills and meet new people in a relaxed informal atmosphere. You will also learn how to cook delicious and cost effective vegan and vegetarian recipes, allowing you to feed your family for less! I will be happy to include any special requests and favourite recipes and will provide a small takeaway box for each person after each session. Refreshments will also be included during each session"

**Impress your family and friends with your own home cooked curries!**

Please call Suk on **07778 517045** for bookings and further enquires

## REFLECTIONS

May, of course, is the month of the Coronation; an event most of us will never have experienced before. Many celebrations are planned nationally and locally and our churches are

taking their part in marking this momentous day. The services on the day after the Coronation will have a Coronation theme as we pray for our newly crowned King, and there will be a vigil service of prayer on the Friday evening before the day itself. Our morning service on 7th May will take place at Wansford instead of Thornhaugh and will feature the St. Mary's Choir. The Archbishops of the Church of England invited everyone to a period of prayer from Easter Day to the Coronation, so our new king is surrounded by prayer as well as good wishes as he is crowned.

Our monarch, amongst their many other roles is "Supreme Governor of the Church of England" a duty our late Queen took very seriously, and it would seem that our new King, Charles III will take the role equally seriously, although, as is right in our modern times, there is respect and inclusion for all Christian denominations and all faiths.

The Coronation ceremony will be one of great pomp and splendour with national and religious significance. The most sacred moment of any coronation is the anointing. You may have seen news of the consecration of the oil to be used which took place on the Mount of Olives in Jerusalem. When Queen Elizabeth was crowned, this holy part of the ceremony was hid from view and it seems that the same may be so for King Charles' anointing as well. He will be anointed on his head, his chest and his hands, marking God's blessing of head, heart and hands in his service. In words and actions through-out the ceremony, King Charles will be committing himself to the service and the well-being of his subjects.

During the coronation celebrations we are encouraged to offer our time in voluntary service within our communities; to commit if you like, our head, heart and hands to the service of others. We are fortunate that many in our village communities do just that and as well as considering our own role in the place where we live, we can give thanks for all who commit so much of their time and energy to others in so many ways.

I am sure that the Coronation will be a time of great celebration (which in itself will require a great of effort from those organising!) and perhaps a time to give thanks for all the volunteers that enrich our lives. So much goes on that we are not aware of – we just benefit from the efforts of others. That is equally true in our church life and it is at this time of year, at our annual meetings when we give thanks for all who work so hard to maintain the life of our churches.

May we enjoy all our great celebrations and may this a month of blessing for us all.

*Rev. Jane*

## CASTOR BENEFICE

We are still maintaining the following service pattern every Sunday in each of our **Parish churches** until further notice.  
**Marholm** 9.00am - Holy Communion (Morning Prayer on 4th Sunday)  
**Castor** 8.00am Holy Communion (said service) 10.15am - Sung Eucharist  
**Sutton** 9.00am on 4th Sunday of the month - Holy Communion  
 Every **Wednesday** morning at **10am** there is a service of Holy Communion at **Castor**.

We still continue to celebrate **Evensong via Zoom at 6pm every Sunday**, if you wish to join us please contact the Benefice office for the Zoom link and access code.  
[admin.castor@btconnect.com](mailto:admin.castor@btconnect.com)

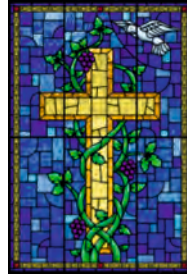
The next service at St. John the Baptist, Stibbington will be to celebrate the **Patronal Festival on Sunday the 2nd of July at 4pm**, see separate poster.

**David Ridgeway**

**ST. JOHN THE BAPTIST, STIBBINGTON  
 WILL BE CELEBRATING ITS PATRONAL  
 FESTIVAL**

**ON**

**SUNDAY 2nd JULY AT 4pm**



**DO COME AND JOIN US  
 YOU WILL BE ASSURED OF A VERY WARM WELCOME  
 REFRESHMENTS WILL BE SERVED AFTER THE SERVICE**



Dry carpet cleaning and upholstery cleaning services in Peterborough and the surrounding areas.

Whether you have an individual chair or carpet in a domestic property, or are interested in contract carpet cleaning in your business, you can benefit from our 35 years experience.

Telephone: **01832 280429**

Mobile: **07951 124374**

Email: [info@bcnmulticlean.co.uk](mailto:info@bcnmulticlean.co.uk)

## GRIFFIN

**Solid Fuel Merchant  
 Supplier of Pre Packs**

**Coal Bunkers Charcoal Compost  
 Flo Gas Logs & Sticks Salt**

**Coal Yard  
 Station Road  
 Nassington  
 01780 782540**

**Office  
 12 Church Hill  
 Castor  
 01733 380470**

## BARKLEYS GARDEN SERVICES

**Grass cutting, weeding,  
 hedge trimming**

**Lady gardener  
 available**

**Bev & Peter  
 Ailsworth  
 (01733) 380480  
 07593721144**



**beverleybarkley1@gmail.com**





**Podiatry & Chiropody**  
Cracked Heels, Corns, Diabetic Foot Care,  
Calluses, Hard Skin, Verrucae Treatments;  
Biomechanics & Orthotics  
Nail Surgery, Ingrown Nails,  
Cryo Aesthetics for Skin Lesions,  
Wilde Pedique Nail Reconstruction

**01780 782200** Home Visits Available  
Sue Arnold BSc(Hons) MRCPod & Associates  
19 Elton Road, Wansford, PE8 6JD  
wansfordinstep@gmail.com

**Now Accepting New Patients!**

**Ear Wax Microsuction**  
Ear Ache? Hearing Loss? Blocked Ears?  
Need A Pre Hearing Test Clean?  
*It could just be wax!*



## PIANO LESSONS IN PETERBOROUGH

Ann Burden ALCM PGCert BSC(Hons)

Please contact [annburden684@msn.com](mailto:annburden684@msn.com) or ring 07702363337

**QUALIFIED EXPERIENCED TEACHER**

No experience is necessary. I can teach you to play for pleasure or towards an exam; I currently work for the London College of Music. Lessons are tailored to your requirements.

If you would like to take up a new hobby or rekindle an old one I would love to hear from you. I am happy to take children from the age of three upwards and there is no age ceiling.

I teach a wide range of instruments primarily piano, keyboard, guitar, violin, clarinet and saxophone. Other instruments are also available so please feel free to contact me with requests. I also teach music theory.

**\*\*Online classes also available\*\***



## STIBBINGTON & WANSFORD WI

### Today's women working for tomorrow's world



Each year W.I. at national level supports a campaign based upon the voting by members from a shortlist of resolutions. For 2023, the W.I campaign is based on the resolution 'Women and girls with ASD and ADHD under-identified, under-diagnosed misdiagnosed and under-supported'. Under the national federation, WI through its public affairs departments, will be involved with specialist organisations that provide expert advice or support, increasing awareness to the wider community. In addition, to lobby public health bodies and Health ministers to improve the process of diagnosis and after support through education.

As a group, we felt it was important to find out more about these conditions, so that we can better support members that are Autistic or ADHD. Also for those within the group that have family with these conditions.

We were very lucky to have Dr Janet Clarke as our speaker this month. Janet is a retired Paediatrician and lead for the Child development unit at Peterborough Hospital, with a wealth of knowledge on Autism and Asperger's. She led us through the history of how these conditions were first recognised, and therefore how the diagnosis routes have developed with time, so that now there is a very holistic approach. Because first studies were based on the behaviours demonstrated by boys, these behaviours have been the basis for diagnosis, however diagnosis which is female specific is now being looked at, along with its development; something that WI campaign is supporting.

It is essential for the child to have early diagnosis, as this allows for early intervention, for the involvement in communication based programmes, for the adaptation of the home and school environment wherever possible. Alongside these to support parents, by teaching them more about the condition, and where needed to provide respite.

Janet gave a very insightful, knowledgeable and informative talk, answering questions from both members and visitors.



Earlier this month, a number of members went to see the 'Threads through creation' exhibition, held at Peterborough Cathedral. Huge textile panels created by Jacqui Parkinson, in which she has reimagined the story of creation. These panels took nearly three years and with millions of stitches and miles of thread and fabric. They were very impressive, bringing those first few verses of the bible to life.

Over Spring, summer and Autumn we will be meeting in St Mary's Church Wansford, if you wish to attend one of our upcoming meetings to hear one of our visiting speakers, please get in touch.



Please see below for our up, coming events:

**Tuesday 9th May 2023, 7pm** W.I. meeting, in St Mary's Church Resolution supper

**Tuesday 2nd & 16th May 2023, 2-4pm** Coffee & Craft club, at Wansford Community Hall

**Thursday 25th May 2023, 7.30pm** Book Club meeting, at The Cross Keys Wansford

**Tuesday 13th June 2023 7pm** W.I. meeting in St Mary's Church. Watercolour flower painting for beginners. Speaker Jane Taylor-Pitt.

Both the Coffee & Craft club, and Book Club are open to all, not just for WI members, and we look forward to others joining us.

## The Friends of St Mary's and St Andrew's

Our very successful Lent Lunch at the end of March raised £351.50 which has been donated to the Turkey/ Syria earthquake appeal via Open Doors.

Thank you to everyone who supported us so generously.

Our May Coffee Stops will be on **Wednesdays 10th and 24th, at 10.30** after Morning Prayer.

There may be a plant sale as well!



**Caroline Ashley**

*St. Mary's Church  
Wansford*



*A Service of Celebration for  
The Coronation of  
King Charles III  
SUNDAY 7<sup>TH</sup> MAY*

*9.30 a.m.*

*Including specially selected  
music from St. Mary's Choir.*

*Followed by Coffee and  
Celebration Cake.*



*All Welcome!*

# OVER 50 YEARS EXPERIENCE

Car buying as it should be; simplistic, with no admin fees, no pressure and a wealth of knowledge to help you find your dream car.

**Great part exchange prices given**

**Finance from as low as 6.9%**

**[www.heartysofpeterborough.co.uk](http://www.heartysofpeterborough.co.uk)**

**01733 560605**

**[sales@heartysofpeterborough.co.uk](mailto:sales@heartysofpeterborough.co.uk)**



**HEARTYS**  
*of Peterborough*



*Beautiful curtains, blinds and soft furnishings  
designed and created to compliment your  
home.*

*For a free home consultation  
and quote call 07957686595*

**Georgina's**  
*Curtains & Keepsakes*

[www.georginascurtainsandkeepsakes.com](http://www.georginascurtainsandkeepsakes.com)



\*\*\*\*\*

**MOBILE HAIRDRESSING**

Ladies & gents hairdresser with over 30 years experience. 

If you are housebound, have reduced mobility, no transport or simply prefer the convenience of having your hair done at home, I have daytime appointments available. Fully insured. Competitive prices.

**Please call Tracey on 01780 782467**

\*\*\*\*\*

**Woodland Timber Products**

Fencing, Play Houses, Gates  
Pet Housing, Sheds



**01780  
783983**



Unit 4, Leedsgate Farm Business Park,  
Kings Cliffe Road. Wansford PE8 6NX.  
07748 787360  
[woodlandtimber.products@yahoo.com](mailto:woodlandtimber.products@yahoo.com)



*polished*  
NAILS & BEAUTY






Award winning nail and beauty professional, providing luxurious treatments from a relaxed setting

TREATMENTS AVAILABLE

- Manicures & pedicures
- Gel polish
- Footlogix medi-pedi
- Nail rehabilitation
- Bespoke nail art
- Nail extensions
- Eyelash extensions
- Facial waxing
- Tinting
- LVL (lash lift & tint)
- IBX nail strengthening & repairing




phone 07811 057715  
email [hello@polished-nailsandbeauty.co.uk](mailto:hello@polished-nailsandbeauty.co.uk)

website [www.polished-nailsandbeauty.co.uk](http://www.polished-nailsandbeauty.co.uk)  
Find us on Facebook @polishednailsandbeautyuk

THE HAYCOCK MANOR HOTEL, WANSFORD, PETERBOROUGH, PE8 6JA

## THE CHRISTIE HALL

Elton Road, Wansford  
(registered charity no 1033998)

A well-equipped hall  
with large kitchen and parking.

**Available for parties,  
receptions,  
meetings,  
activity groups  
and most types of private functions**



For more information  
and details on how to book  
visit our website

**[www.christiehall.co.uk](http://www.christiehall.co.uk)**

## PAWS AND CLAWS



### Boarding Cattery

*"Cats have a 'tail' to tell when they've 'paws'd'  
awhile at Wansford's 5 Star Purr Palace"*

Tel 01780 782174

e-mail

[pawsandclaws@hotmail.com](mailto:pawsandclaws@hotmail.com)



Working with Peterborough Cat Rescue to rehome cats  
and kittens seeking loving homes and laps on which to purr

Peterborough City Council & Rutland County Council  
Licence Number: 078015

## FRIENDS OF ST REMIGIUS WATER NEWTON

\*\*\*\*\*

### SAVE THE DATE

## WATER NEWTON MUSIC FEST 2023

**Bank Holiday Sunday 27th August**

After an absence of 3 years, the organisers are delighted to announce the return of  
the ever popular Water Newton Music Fest.

The full line up of bands will be released shortly

Gates open at 12 noon with first band on stage from approximately 1pm.

The event will be held on the village green, Water Newton, with continuous music  
through to 7.30pm.

This year there will be delicious food, together with locally made hamburgers and a  
beer tent serving real ales supplied by our very own local brewery - Castor Ales.

For now, be sure to note the date in your diaries and let all your friends know of the  
event.



## Your trusted advisers

We provide individuals and businesses with a full range of accounting, audit, corporate and personal tax planning services.

- Audit and Accountancy
- Business Acquisitions and Disposals
- Business Plans and Projections
- Corporate and Personal Taxation
- Grant Funding
- MT Cloud Accounting
- Payroll, Bookkeeping and VAT
- Tax Planning and Mitigation

For more information,  
please contact us:

 **01733 560160**  
[moorethompson.co.uk](http://moorethompson.co.uk)

Peterborough | Spalding | Wisbech | Market Deeping



Moore Thompson is registered to carry on audit work in the UK  
by the Institute of Chartered Accountants in England and Wales.





PIMMS TENT  
HOG ROAST  
LIVE MUSIC  
FUN & GAMES  
ICE CREAM BICYCLE

Organised by Wansford & Sibson cum Stibbington Parish

Councils in Association with The Haycock Hotel

# CORONATION PICNIC

BRING YOUR OWN PICNIC OR TREAT  
YOURSELF TO A HOG ROAST

MAY  
7  
2023

1-5PM SUNDAY  
THE HAYCOCK FIELD

SEE YOU THERE!





# Programme of events for the Coronation Weekend

## Saturday 6th May

- 8pm - lighting of the Community Beacon with complimentary drinks outside The Stables on Old Leicester Road - organised by Wansford Parish Council

## Sunday 7th May

- 9:30 am - Special Celebration Service at St Mary's Church Wansford with the Community Choir
- 9:30 am - Wansford-In-England Cricket Club are hosting a charity cricket match in aid of Sue Ryder
- 1pm - Coronation Picnic, Haycock Field - organised in collaboration by Wansford and Sibson cum Stibbington Parish Council and the Haycock Manor Hotel

## Monday 8th May

- 10 am Community litter pick and village volunteering day - gather outside 7 Old North Road - organised in conjunction with Wansford Parish Council

**For the picnic - there is no entry charge as this event has been put on by Wansford and Sibson cum Stibbington Parish Councils with the kind permission and support of The Haycock Manor Hotel**

- Bring your own picnic (in your garden wheelbarrow if you fancy joining in the race), or purchase food and drinks from the Haycock's offerings
- Bring your own picnic chair or blankets - whatever makes you comfortable
- Children's fancy dress competition (Kings & Queens theme but feel free to go along with your child's choice), will be near the beginning of the event in order to see their costumes at their best - there will be a prize for the winner
- Children's games and craft crown making will be available but please supervise your children as required
- Entertainment for the afternoon will be provided by The Wansford Community Singers, WUF (Wansford Ukulele Folk), and Yarwell and Nassington Britannia Band
- Dogs are welcome but owners are respectfully asked to supervise them at all times and clear up after them
- Portable toilets will be available on the field near the Haycock Gate
- The event will finish with a wheelbarrow race and a tug of war

Wansford and Sibson cum Stibbington Parish Councils expect all attendees of this event to use good judgement, obey all laws and take reasonable care to avoid any injury to their person, other persons or property and attendance is at their own risk.

In the event of rain, The Haycock have agreed to kindly provide 2 large marquees for shelter.

If you have mobility issues & need a lift to or from the event, please email: [clerk@wansford-pc.gov.uk](mailto:clerk@wansford-pc.gov.uk).

## WANSFORD PARISH COUNCIL



As the newest Councillor on Wansford Parish Council, this report may seem a little different to previous ones you have read but hopefully no less interesting.

The Council met on the 17th of April 2023 and full details can be found in the minutes which will be published on the Parish Council Website here: <https://wansford-pc.gov.uk/documents/>

A huge thank you to everyone who completed the 'Have Your Say' survey about the village and apologies for my lack of foresight in allowing multiple boxes to be ticked. It has really helped me as a new Councillor to understand what you (as a collective) think of our village and what you would like to see happen. This will also help to inform future planning at Parish Council level moving forwards.

Some interesting facts from that survey: people overwhelmingly had lots of positives about our village. The largest concern given was about traffic coming through and the Parish Council are already working with the contractors who will be completing the dualling works as well as the Highways and local Police to reduce the impact as much as possible on the village. More information on this will follow over the coming months. Galliford Try, who are the contractor for the dualling scheme, will be organising a public presentation at the Community Hall on the 22nd June 2023 with more details to follow next month.

Whilst 50% of survey respondents preferred updates via social media, it would appear that no one looks at the Parish Notice Board to find out what's going on! If you are passing, please look at it as this is updated regularly with community events and the agenda of the upcoming Parish Council meeting. There is dedicated public time at every meeting for any member of the Parish to come along to discuss concerns or talk about anything of interest on the agenda.

The survey showed that over half of you wanted to celebrate significant events and we are really hoping that you join in the exciting celebrations taking place over the Coronation Weekend – see the centre spread for more details in this magazine. It is fantastic to have Parish Councils from both sides of the bridge working together with The Haycock Manor Hotel for this wonderful occasion.

90% of the survey's respondents said they felt safe in the village, which is great news but for those that expressed concerns, these are being taken seriously and we have already raised some of those concerns given to us with our local police officers. You may have noticed Cllr John Stannage and I walking round the village with them on Saturday, 15th April to discuss some of the concerns raised and we will keep in contact with them for support going forwards.

There were a few requests made through the survey for more activities to be organised for children in the village and there is an agenda item now for the next meeting with some exciting suggestions for ways to address this - we will keep you posted!

It is so important that you have your views represented. Whilst we as Councilors do our very best for the village, having your say helps to steer us in the right direction when making decisions. On 11th May there will be the Annual Parish Meeting on The Green outside St Mary's Church (inside if it's raining). It's an open meeting to discuss anything about the village you wish to bring up so please do come along and get involved. The next regular Parish Council meeting will take place on Monday 15th of May at 7:30pm, please feel free to come along and get involved in your village. The agenda and past minutes are all on the website as per the link above.

Sending very best wishes to all,

Cllr Jane Taylor-Pitt,  
Wansford Parish Council.

## SIBSON-CUM-STIBBINGTON PARISH COUNCIL

The next Sibson cum Stibbington Parish Council Meeting will take place at **Thursday 4th May in the Christie Hall commencing at 7pm**. Details will appear in a future edition of Living Villages Magazine.

## THORNTAUGH PARISH COUNCIL

A meeting of Thornhaugh Parish Council took place on 20th March 2023 in St Andrew's Church. It was chaired by Chris Smith and present were Yana Clipsham, Neil Croft-Taylor, Louise Molesworth, Camilla Plumb, PCC Ward Councillor Gavin Elsey, Alan Frost, and Deirdre McCumiskey, Parish Clerk.

**Highways Issues** - the Chairman gave an update on the following highways issues:- still no movement on the layby closure or a response to why the bus stop road markings were renewed for a defunct bus stop; she will continue to chase both for layby closure and for adjustments to be made to bus stop exit to make it easier for residents to pull out onto the A1; she had reported the poor state of the road up to the junction of the A47 but PCC had stated that the road was not bad enough to be repaired at the moment and she reported that the drains had been dealt with.

**Defibrillator Training** - Louise Molesworth will set a date for the Defibrillator Training which will be held in the Christie Hall after which she will contact those who have previously expressed an interest to finalise the sessions. It is likely that two sessions (possibly back-to-back) will have to be held due to the numbers wishing to attend.

**Website Review** - Jay Allsopp has submitted a revamped Website for the Parish Councillors to approve. The Parish Councillors were impressed with it but agreed that more information needs to be included for example: location of Defibrillator; photographs of the Jubilee Event 2022; Parish Councillor email contact details; Parish Council Policies; Links – TEA, T&W Parish Councils Burial Ground Committee, Christie Hall; Social Events; Library Timetable; Call Connect and the removal of Parish Councillor profiles. It was agreed to go live on 1st April 2023.

**Social Events** - the Chairman had passed the details of residents who had helped at previous events to Neil Croft-Taylor who is organising the Coronation Event on 7th May 2023. The event will hopefully take the form of a simple Street Party (maybe in Meadow Lane) with residents bringing their own picnic. She advised him on how to apply for a road closure if necessary. Alan Frost will investigate obtaining Coronation Coins for the children who live in the village.

**Planning Applications** - 22/01677/HHFUL - Addition of a bespoke, timber and double-glazed garden to rear elevation at The Hall, Thornhaugh Hall Estate, Russell Hill, Thornhaugh. No Objection - Permitted; 22/01492/FUL - Change of use of land within the existing farmyard to Use Class B8 (storage and distribution) and change of use of existing agricultural buildings to Use Class E(g) (office, research and light industry) - Retrospective at Manor Farm, Russell Hill, Thornhaugh. The Parish Council has submitted no objection subject to this, not extending the village envelope and not granted permitted development rights. Permitted; CAS15A/0001/22 - Land to the east of Tolmers, Leicester Road, Thornhaugh, Peterborough Common Land Register - Section 15(8) of the Commons Act 2006 - Permitted; 23/00068/TRE- Lime trees cutback by 30% and potentially pollard 5 trees which are showing signs of rot and phytophthora at base (90/00002/TPO) at Home Farm, Leicester Road, Thornhaugh – Permitted; 23/00112/FUL -Erection of 2 x temporary shipping containers for 18 months at Abbots Wood Service Station, Great North Road, Thornhaugh – Awaiting Decision and Planning Appeal for 22/00506/FUL - Change of use from agricultural land to garden land at Croft Farm, Meadow Lane, Thornhaugh – Awaiting Appeal Decision. A resident had questioned the felling of a Pine at 11 Russell Hill, and it was confirmed that Planning Permission had been applied for and approved on 23rd March 2022 (22/00390/CTR).

**Finance** - Funding for St Andrew's Church Floodlights – after discussion on this matter, it was agreed that this would not be an appropriate use of limited PC funds and Louise Molesworth suggested that this was more appropriate to the Burial Committee than the Parish Council. As a member of the Burial Committee, she will raise this as their next meeting. The Chairman will write to Stuart Foreman (Churchwarden) to explain the decision. Annual Donations were made to Thornhaugh & Wansford PCC (£190) and Living Villages (£100) after being approved for another year.

**Bird Boxes** - Yana Clipsham reported that Hannah Joyce had delivered bird boxes to her and Neil Croft-Taylor.

**Village Sign** – Glyn Mould given go-ahead to do village sign refurbishment. This will be done at some stage during the Spring.

The next Thornhaugh Parish Council Meeting will take place at **7.00 pm on 15th May 2023** in St Andrew's Church. This will be the Annual Parish Meeting followed by the Annual General Meeting. The next Details will appear in a future edition of Living Villages Magazine.

## COMMUNICARE AGM - MAY 2023

The PPG held their 41st AGM at the end of March at Wansford surgery – due to the restrictions of Covid there had been a lapse of some 18 months since the last meeting in October 2021. Attendance was poor with only thirteen patients present including the PPG officials plus Dr Rhiannon Nally, the Senior Practice Partner, and Ms Annette Johnson, the Deputy Practice Manager.

The chairman expressed his thanks to all other officials and also to the practice staff with whom there was good two-way communication on all matters. The PPG acted as critical friends and were happy to be involved in the many challenges which the practice needed to resolve. The treasurer presented the annual set of accounts – there had been little movement with receipt of investment interest but very limited donations. Unfortunately due to Covid and ageing problems past coffee mornings, day coach trips and short holidays are now not viable.

Mrs Wendy Spencer and Mrs Heather Gough presented their resignations and stood down as officials and were thanked for their conscientious, exemplary, selfless and invaluable service, both for more than 20 years, on behalf of the Practice's patients – the other six officials indicated their willingness to continue in office. It was acknowledged that there was a need for younger people to come forward – the advent of zoom meetings might be attractive to some thus avoiding the necessity to attend face to face meetings. This matter will be addressed in several ways over the coming months not least by the use of social media. However one patient present at the meeting did offer her services and will be adopted as an official at their next meeting.

Dr Nally confirmed that the patient list had increased by 20-30% over the last two years – however consultations were also up by 15% since the pandemic. The patient numbers had increased from 4900 to over 10,000 since she joined the practice. The practice catchment area covered 120 square miles and included over 30 villages. In the past patients had been accepted from outside this catchment area, with the proviso that they would not be eligible for home visits. Over the last few months the patient list has been closed for anyone living outside the area but it has now been decided to seek permission to close the list for all new patients, in or outside the catchment area. Although obviously a retrograde step, it was necessary and also seen as a way in which to highlight the problems of space and need to obtain funding for expansion, both at Wansford and Kings Cliffe. Permission has just been granted for the refurbishment of the surgery at KC – this work will be undertaken as quickly as possible and will include the addition of a proper reception area and an additional consulting room. However, permission has not been granted for the use of the first floor space. Although welcome, this upgrade of the KC premises was not a long term solution, especially from the parking aspect.

There are plans to expand the Wansford surgery, beyond the current premises – but currently there is a delay in obtaining the necessary permission and funding.

Mr Simon Fairhall informed the meeting that the garden project at KC Active would be gaining momentum again as the weather improved, with the planting of the raised beds – many volunteers were available and both the café and pavilion were being well used.

## Wansford community continue to support Sue Ryder ahead of annual show

A special talk by award-winning garden designer Bunny Guinness and hosted by the Wansford Horticulture and Craft Society has raised £300 for Sue Ryder Thorpe Hall Hospice.

Held at The Christie Hall on Thursday 23 March, the talk saw the gardening expert, who is a long-time panellist on BBC Radio 4's Gardeners' Question Time and weekly columnist for the Sunday Telegraph, speak about the two gardens she knows best - King Charles' gardens at Highgrove and her own in Thornhaugh.

Bunny kindly waived her fee for the talk in favour of raising money for the society's chosen charity - Sue Ryder Thorpe Hall Hospice in Peterborough - and a voluntary collection on the night raised £300.

Gary Punter, chair of Wansford Horticultural Society, said, "We are so grateful to Bunny for giving this enthralling talk in support of Sue Ryder Thorpe Hall Hospice. Her depth of knowledge and passion gave us a rare insight into how both gardens were brought to life to reflect the values of their owners.

"We are delighted to have raised £300 for the charity and look forward to adding to this fundraising total as we head towards our biggest event of the year - the Wansford Show - later this summer."







Oil boiler servicing and repairs, heating controls, hot water service and repairs.

Your local heating expert for over 15 years.

Jo Childs,  
8 Black Swan Spinney,  
Wansford.

**Mob : 07729036942**

Last year's Wansford Show raised £1,736 to support the expert palliative care and bereavement support Sue Ryder provides to people in the local community, and plans are now in full swing for the 2023 show on Saturday 26th August.

The popular event, which has been running for 77 years, is expected to be attended by over 1,500 people and aims to celebrate the best of village life. It will feature live music, food and drink, traditional games, classic cars and bikes, over 40 local craft stalls, and a traditional marquee full of entries of vegetables, flowers, cakes, photos, art and crafts.

This year organisers are also encouraging children to get involved in the 'Toy Pet Show' and bring their favourite toy animal to show in the marquee.

The Wansford Show will take place on Saturday 26 August from 12noon - 5.30pm. Entry is £5, under 16s go free. For more information, visit: [www.facebook.com/wansfordshow](http://www.facebook.com/wansfordshow) or email [garypunter@aol.com](mailto:garypunter@aol.com).

For more information on Sue Ryder Thorpe Hall Hospice, visit: [www.sueryder.org/thorpe](http://www.sueryder.org/thorpe).

# PennyYoga

## Be a Better Version of Yourself

Be more flexible, stronger and calmer with Yoga

Small friendly groups welcome all levels, ages & fitness.

Morning & Evening sessions Mondays, Tuesdays and Thursdays

Contact Penny today - 07960267986 pennyyoga@yahoo.co.uk

# PETER RIDDINGTON LANDSCAPING

We supply and install Patios & Pathways, Decking, Stone Walls and Fencing, We plant Trees, Shrubs Hedges and Flowers, and offer a complete Garden Maintenance and Improvement Service. Garden design service provided  
Contact Peter Riddington today for a free quotation

4 LOCKS GREEN, YARWELL, PETERBOROUGH PE8 6PY  
Telephone: 01780 783004 Mobile: 07860 962068  
Email: peter@peterriddington.co.uk



## New Luxury Care Home



### Castor Lodge Care Home

At Castor Lodge, our care is the kind we would want all of our loved ones to receive. Offering residential and dementia care, our dedicated team make life comfortable and enjoyable for all our residents, allowing them to live safely and as they choose. Our brand new home is luxurious and beautifully furnished, whilst retaining a warm family atmosphere that makes Castor Lodge feel extra special.

- 68 Spacious en-suite bedrooms
- 6 Premium self-contained suites
- Bistro Café and themed pub
- Sociable lounge and dining areas
- Roof terrace and landscaped gardens
- Hair and pamper salon
- Daily fine dining
- Tailored meaningful activities

To find out more about life at Castor Lodge contact our Customer Relations Manager Laura Mills on 07725 799 217 or email [laura.mills@countrycourtcare.com](mailto:laura.mills@countrycourtcare.com)





The Chairman of  
Wansford Parish Council cordially invites  
the people of Wansford and neighbours  
to join him with fellow parish councillors for the lighting of the  
community's Beacon in celebration of the  
Coronation of King Charles III  
to take place at  
The Stables, Old Leicester Road, Wansford  
on Saturday, 6 May at 8 pm.  
A complimentary glass of wine/beer/soft drink will be offered



## Wansford Litter Pick - Calling Wansford Volunteers!

We are planning a Coronation Clear-up litter-pick on Monday 8th May, which is the 'Big Help Out' day to promote volunteering. This is the day after the Wansford and Sibson-cum-Stibbington Picnic so may be a nice way to blow the cobwebs away and capture any escaped champagne corks!

This litter pick will start at 10.30am, at 7 Old North Road, equipment provided but please bring your own gloves and hi-vis vest if you have one. We welcome accompanied children and there is always somewhere safe to litter pick - this is supported and insured by Wansford Parish Council.

Litter picks planned for 2023, all with a 10.30 start, are:

Monday 8th May

Sunday 25th June

Saturday 22nd July

Sunday 27th August (day after the Village Show)

Saturday 7th October

Any other dates or amendments will be on the village facebook page, or contact me to be added to our email distribution list. We are also happy to lend out the litter pickers and hoops to other groups who may wish to borrow them – please just ask!

Jane Hunt

07787517511

Jane-hunt@hotmail.co.uk



# Just ask

Making the right decisions can be stressful at the best of times, but we are here to help. Whatever's on your mind, just ask.

**TOBIAS COLTON** (BA)(Hons) DipPFS

Principal

**TOBIAS COLTON WEALTH MANAGEMENT**

Associate Partner Practice of St. James's Place Wealth Management

07468 428 380

tobias.colton@sjpg.co.uk

www.tobiascoltonwealthmanagement.co.uk



  
**ST. JAMES'S PLACE**  
WEALTH MANAGEMENT

The Partner Practice is an Appointed Representative of and represents only St. James's Place Wealth Management plc (which is authorised and regulated by the Financial Conduct Authority) for the purpose of advising solely on the group's wealth management products and services, more details of which are set out on the group's website [www.sjpg.co.uk/products](http://www.sjpg.co.uk/products).  
The St. James's Place Partnership and the titles Partner and Partner Practice are marketing terms used to describe St. James's Place representatives.

SJPM2026 V1 (04/20)



## Wansford Horticultural & Craft Society

### *'Wow what a busy time'*

Sacrewell seed sowing, Plant Sale, Membership renewals, Blatherwycke garden visit, Summer social/Open gardens and day trip to RHS Wisley (reserve your seat now).

The **Bunny Guinness** talk was fantastic and our biggest gathering since Covid. Bunny waived her fee and from voluntary donations we raised £300 on the night for Sue Ryder. The charity are delighted and have released a press release shortly (also in this issue).

**Easter Tablescape** flower arranging with Tanya was sold out and raised a further £72 for Sue Ryder. Following on from the crotchet evening with Elin, we certainly are 'on trend' (apparently according to The Times, workshops are the in thing). Judging by the energy in the room, we are hitting the mark.



**Sacrewell.** Over Easter, we had 23 volunteers from our Society

supporting the Easter event at this lovely farm attraction. Our members helped children plant runner bean seeds and encouraged them to enter a bean into our Wansford Show. We have received some lovely feedback that children, parents and volunteers found the experience enjoyable and rewarding. Well done to our seed sowing volunteers and Sue Arnold!

**Plant Sale on the Wall at Goss Cottage.** This started on Good Friday and we have a plentiful supply of tomatoes (many Italian varieties), sunflowers, hostas and Broad beans. More donations are promised and even more will be very welcome. Plants are free to good homes, and any donations are voluntary. Again we hope to raise more funds for Sue Ryder. Over £200 so far.

**Membership.** Many thanks to you all you new and existing members. Apparently at 125 paid members, this is one of the largest number we have ever had. Many thanks to Rhona and Quentin for organising all so efficiently.

**Blatherwycke garden visit** (10am) and lunch on 24th May. The visit is oversubscribed and we will be writing to those signed up shortly with final details.

**Summer Social 24th June**, will be combined with Open Gardens. We have 3 gardens opening. The Social afterwards will be special.

**RHS Wisley Visit.** 15 July. Great value at £30/person to include coach and 1 hour tour of garden. Meet 8.30am outside Papermills pub, leave Wisley 4.30pm and return about 7.30pm depending on traffic. We have already filled half the coach therefore please contact Rhona or I to reserve a place.

Hope to see you all soon

Gary Punter (Chair)  
garypunter@aol.com



## FENLAND DISTRICT BROKERS LTD

Your business needs protection at so many levels.  
We can advise on full Insurance Coverage.  
Local, reliable and experienced.



**FOR ALL YOUR BUSINESS INSURANCE NEEDS**

0808 175 3050 | 22 Cecil Road, Peterborough | [www.fdbltd.co.uk](http://www.fdbltd.co.uk)

Fenland District Brokers Ltd are an Appointed Representative of Ten Insurance Service Ltd which is authorised and regulated by Financial Conduct Authority.

# tmk

TILES + INTERIORS

Carefully selected tiles from established UK, Italian and Spanish suppliers, all with style, quality and value in mind.



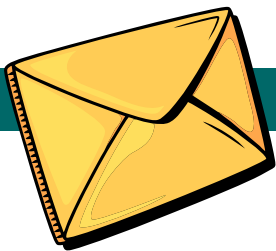
Station Road, St Ives, Cambs PE27 5BH



[tmktiles.co.uk](http://tmktiles.co.uk)



01480 266321



## LETTERS TO THE EDITOR

email [craig@ascotgraphics.co.uk](mailto:craig@ascotgraphics.co.uk)

Dear Craig,

For the benefit of the local residents who read Living Villages you may want to publish my note below.

The Government's Alternative Fuel Payment (AFP) Scheme ends on 31st May

It has become apparent to me through conversations with a number of local residents that they are not aware of this government fuel payment scheme. I assumed, wrongly as it turned out, that having received the £66/67 monthly payments to help with our electricity bills the one-off payment of £200 would follow without problem.

It appears that the government database used to trigger this £200 payment is incomplete. As a result there are a small number of householders living in the villages who may be eligible for the £200 AFP payment but have not received it via their electricity supplier. You are strongly encouraged to check your account as I did. Doing so it was very clear that we had been omitted by the government database and had not received the credit. I encourage everyone to check their electricity account for this £200 credit, and if it has not been made please read on.

The Government Alternative Fuel Payment (AFP) scheme was announced in January 2023 and is designed to help households with their heating bills. The first link below tells you about the AFP scheme and its eligibility criteria. The second link takes you to the application process to claim the £200 if you believe you have been missed. Your electricity supplier will not be able to help you but instead you have to make a claim via the link I have identified below. The closing date for applications is the 31st May 2023.

For general details about the AFP scheme go to <https://www.gov.uk/get-help-energy-bills/alternative-fuels>

If you want to make a claim scroll down to a highlighted link headed Apply for a payment to help pay for alternative fuels

I used this application process and it is very simple to use. The claim process guides you through an eligibility check and if that is successful, asks you for your property details etc. together with the upload of copies of one or more recent fuel invoices totalling at least £200. My experience was that the eligibility details were validated against our council tax records, and the £200 credit was made to the bank account details held by the local authority for council tax payments. The whole process from application to payment was less than four weeks.

Good luck to those applicants who have been missed by the automated system.

Trevor Rogers  
Wansford Resident



## THE ARTS SOCIETY PETERBOROUGH

The Arts Society is a leading arts education organisation that brings people together through a shared curiosity for the arts. Each year The Arts Society Peterborough (TASP) holds nine illustrated talks given by experts in their field on subjects ranging widely, including old Masters, modern sculpture, silver jewellery, the work of David Hockney and music in art. The talks are held at The Fleet in Fletton Peterborough on the second Thursday of each month except June, July and August. The talks start at 10.45 am but you are welcome to come earlier and meet like-minded people for a chat over a cup of coffee. Non-members are always welcome and the first talk is free, so come and join us!

In addition to the live talks, annual members also receive other benefits. If you wish to find out more about our Society or about becoming a member, please visit our website, [www.the-arts-society-peterborough.org.uk](http://www.the-arts-society-peterborough.org.uk) Our next two talks are:.

**11th May 2023**

### **Music in Art, by Sophie Matthews.**

Many historical references for musical instruments exist in art. Sophie explores them and gives live demonstrations on replicas of the instruments depicted.



Your friendly, reliable and honest local heating experts

- |  |   |
|--|---|
| <input checked="" type="checkbox"/> Boiler repairs       | <input checked="" type="checkbox"/> Gas |
| <input checked="" type="checkbox"/> Emergency callouts   | <input checked="" type="checkbox"/> Oil |
| <input checked="" type="checkbox"/> Boiler installations | <input checked="" type="checkbox"/> LPG |



[www.fixfirstheating.co.uk](http://www.fixfirstheating.co.uk)

Call Chris Welch on 01733 315065/07856 518842  
or email [chris@fixfirstheating.co.uk](mailto:chris@fixfirstheating.co.uk)



# WANSFORD COMMUNITY HALL

Peterborough Road, Wansford

This hall accommodates parties of up to 36 people seated. Ideal for Meetings, Workshops, Aerobics etc

GREAT VALUE AT ONLY £4 per hour  
FOR BOOKINGS TELEPHONE  
John Stannage 07879 485330

Capitol Lettors



Your local property agent  
With over 30 years of  
experience  
Relocation, Lettings and Sales

Please call our office for a  
competitive quote

Peterborough - 01733 553366

(enquiries@capitollettors.com )

[www.capitollettors.com](http://www.capitollettors.com)

FRIENDS OF ST. REMIGIUS  
WATER NEWTON  
**CORONATION BBQ**  
FRIDAY MAY 5TH AT 5P.M.  
VILLAGE GREEN

BURGER OR SAUSAGE  
SALAD  
PUDDING  
ONE DRINK INCLUDED  
**£5**  
Children go free

# DIRECTORY OF CONTACTS

## For all enquiries, contributions and adverts

<b>Craig Bunday</b>	craig@ascotgraphics.co.uk	07771 538661
<b>Ascot accounts</b>	accounts@ascotgraphics.co.uk	01487 801301

## Parish Councils

Sutton	Deirdre McCumiskey (Clerk)	01780 782668
Wansford	Marie Lewis (Clerk)	07899 732049
Sibson-cum-Stibbington	Charlotte Newman (Clerk)	07962 226313
Thornhaugh	Deirdre McCumiskey (Clerk)	01780 782668
Water Newton (Parish Meeting)	Caroline Nathan (Chairman)	07989 362514

**City Councillor ( Wittering Ward) - Gavin Elsey**

**07738930599**

## Churches

<b>Ministers:</b> Thornhaugh & Wansford		01780 782271
Stibbington, Sutton, Castor & Water Newton		01733 380900
	<a href="mailto:admin.castor@btconnect.com">admin.castor@btconnect.com</a>	

## Churchwardens:

St Andrew's Thornhaugh:	Stuart Foreman	01780 783220
	Liz Kemp	01780 782333
St Mary's Wansford:	Caroline Ashley	01780 782408
	Alan Jones	01780 783205
St John the Baptist, Stibbington	Charlotte Bradshaw	01780 781805

## Friends:

St Mary's & St Andrew's	Caroline Ashley	01780 782408
St Remigius Water Newton	Tony Capon	01733 237500

## Other useful contacts

Neighbourhood Policing 101		P'boro City Council	01733 747474
Wansford Surgery	01780 782342	Royal British Legion	01780 782200
(Out of hours	111 option 4)	Stibbington & Wansford WI .	.781733
Wansford Pharmacy	01780 781616	Cricket Club	07860 278800
Communicare	01780 470437	Horticultural Society	01780 592514
H'don District Council	01480 388388	Stibbington Centre	01780 782386

## Website

[www.livingvillagesmagazine.co.uk](http://www.livingvillagesmagazine.co.uk)

©2023 Living Villages Magazine The contents of this magazine may not be copied, reproduced, distributed, republished, downloaded, displayed, posted or transmitted in any form or by any means without the prior written permission of Living Villages Magazine. You may not distribute, display or copy any of the contents of the pages contained in this magazine to third parties without the prior written permission of Living Villages Magazine. All images shown in this magazine are the property of Living Villages Magazine unless otherwise accredited to another. Images may not be used without the prior written permission of Living Villages Magazine or the accredited owner. Unless otherwise specified, the authors of the literary and artistic works in the pages in this magazine have asserted their moral right pursuant to Section 77 of the Copyright Designs and Patents Act 1988 to be identified as the author of those works. If permission is sort and given, it is expected that all articles/images be accredited to either Living Villages Magazine or the author of said articles/images. The views expressed in articles published are strictly those of the writer, and not of Living Villages. Living Villages cannot vouch for products and services advertised, nor accept any liability resulting from the purchasing of product/sor services, although care is taken to ensure their suitability.

## NEED A LOCAL PLUMBER?

**PlumbCall** Plumbing & heating  
Same day / next day service!

- Gas, Electric, Oil, LPG & Solar
- Central heating: Full design & installation
- High efficiency boilers
- Boiler / combi replacements
- Central heating, boiler breakdown & plumbing aftercare
- Underfloor heating specialist
- Power flushing
- Landlord certificates
- Free estimating service
- Annual servicing
- All work guaranteed
- OFTEC Registered

**12 year manufacturer's guarantee on selected boilers**  
(Terms & Conditions apply)

**CALL US TODAY!**

**01733 243 047**

**or 07860 257 803**

E: [advice@plumb-call.co.uk](mailto:advice@plumb-call.co.uk)

W: [www.plumb-call.co.uk](http://www.plumb-call.co.uk)

Gas Safe Register No.8494  
LPG Registered



\*subject to acceptance terms and conditions apply



# NORTON RICKETT

Local *Independent* Estate Agents

- Free Market Appraisals
- Probate Valuations (RICS Surveyor)
- Local – Office near Wansford
- Established & Trusted since 2012
- Advertising on Rightmove
- Office Presence in London

**10**  
**YEAR**  
**ANNIVERSARY**



[www.nortonrickett.co.uk](http://www.nortonrickett.co.uk)

01780 782 999



# Crown

## Property Services

-  Electrical & Plumbing
-  Kitchens & Bathrooms
-  Renovations
-  Extensions
-  Windows & Doors
-  Groundworks
-  Landscaping
-  Internal Refurbishment

Old Sulehay Cottages, Sulehay Road, Wansford, PE8 6PA

### 07766 168659

jonathon@hibbins.me

# Village Pizzas

Open Tue – Sat for  
Collection / Eat-In at  
Leedsgate Farm  
4.30pm – 10pm  
Or  
Delivery 6pm till 10pm

## 01780 784587

View our Menu at  
[www.villagepizzas.co.uk](http://www.villagepizzas.co.uk)



Mat based Pilates and Chairotics  
Classes for all levels

## MAT BASED PILATES

1 hr classes

Online on Zoom, or in person at  
Christie Village Hall (Wansford) and Harringworth Village Hall

Monday, Tuesday, Wednesday and Thursday  
£3.50 online / £6 in person



Ease back pain  
Strengthen your core, abs and back  
Improve sports performance  
Exercise without joint pain  
Increase your flexibility  
Boost brain power and focus

Christie Village Hall:  
18:00 Monday /  
12:30 Wednesday / 18:00 Thursday  
**Online:**  
16:45 Monday / 11:30 Thursday  
11:00 & 12:30 Tuesday

Justine Bromage  
Fully Qualified Level 3 Pilates Instructor  
Level 3 Personal Trainer  
RSA to Music Instructor

Justine  
BROMAGE FITNESS

[justwhim@hotmail.com](mailto:justwhim@hotmail.com)

07919 106156



## Greenwood homecare

## Do you need care visits at home?

Greenwood Homecare  
provides quality care  
in Peterborough and  
the surrounding areas

✓ FREE ASSESSMENT

📍 DAY, LIVE-IN OR NIGHT  
CARE AVAILABLE



FOR MORE INFORMATION

Visit: [Greenwoodhomecare.co.uk](http://Greenwoodhomecare.co.uk)

Email: [Peterborough@greenwoodhomecare.co.uk](mailto:Peterborough@greenwoodhomecare.co.uk)

Call: **01733 808531**