

# LV

LIVING VILLAGES MAGAZINE

March 2025

*Water Newton Thornhaugh  
Stibbington Sutton Wansford*

[www.businessfinders.co.uk](http://www.businessfinders.co.uk)

Image taken by Don Hutchinson



Call us today to book your  
free appointment

---

# Heritage Wills

Peace of mind when you need it most



Will Writing



Client Care  
Package



Lasting Power  
of Attorney



Agricultural  
Property Relief



Trusts



Corporate  
Benefit Package



Property  
Protection Trusts



Tennants in  
Common



Probate Services



Property  
Title Change

---

01480 465855 | [heritagewills.co.uk](http://heritagewills.co.uk)

HLC Business Centre, 5 The Quay, St Ives,  
Cambridgeshire, PE27 5AR

## Editorial

Dear readers

You'll notice a new look to the front cover of this month's magazine - no, not the fact that we're featuring a couple of lovely canines amongst the snowdrops (thank you to Don Hutchinson for sending the photo in). We've modernised the logo a little to bring it in line with other magazines in the group. This was something that we thought of doing a couple of years ago but held back. However, with the reinvigoration and the return of **The Wansford Show**, which Living Villages is proud to be the main sponsor, we thought it was a perfect time to introduce it. And speaking of the Show, the first of a series of monthly pieces leading up to the event in August appears on page 19.

Elsewhere, Safe Local Trades is again delighted to be supporting one of their members Steve Bedford. Steve and a group of fellow fundraisers will be embarking on an epic 250 mile cycling challenge this summer to boost charity coffers for Help for Heroes - re-tracing the route of the WW2 Allied Forces to Rheine - with visits to important historical sites along the way to pay tribute to the courageous individuals who served. The event will honour the 80th anniversary of VE Day.

And before taking to the streets of London, Steve will be raising money with an evening of comedy, great food and the chance to win some incredible prizes in Peterborough. Last year's sellout event was a huge success – so you won't want to miss it. The fun-packed evening at Mattoni's in Eye, Peterborough takes place on Friday 21 March 2025. Full details are on page 25.

As always, thank you to all the distributors, contributors and advertisers who help shape your magazine - it wouldn't be here without you, and if you have contributions for upcoming editions, please get in touch using the contact details on page 26.

Best wishes

Craig

### Contents

- 6 Worship & Benefices
- 11 Stibbington and Wansford W.I.
- 16 Parish Council Notices and Minutes
- 26 Horticulture Society
- 30 Contacts

## PETER RIDDINGTON LANDSCAPING

We supply and install Patios & Pathways, Decking, Stone Walls and Fencing,  
We plant Trees, Shrubs Hedges and Flowers, and offer a complete Garden  
Maintenance and Improvement Service. Garden design service provided  
Contact Peter Riddington today for a free quotation

4 LOCKS GREEN, YARWELL, PETERBOROUGH PE8 6PY  
Telephone: 01780 783004 Mobile: 07860 962068  
Email: [peter@peteriddington.co.uk](mailto:peter@peteriddington.co.uk)





**HOME**  
MORTGAGE SOLUTIONS LTD

THERE FOR YOU EVERY STEP OF THE WAY  
Whole of Market . Critical Illness. Solicitor Liaison. Total Protection

**01205 631330**  
**kate@homemortgagesolutions.uk**  
**www.homemortgagesolutions.uk**

\*Your home may be repossessed if you do not keep up repayments on your mortgage

**Woodland Timber Products**  
Fencing, Play Houses, Gates  
Pet Housing, Sheds

**01780 783983**

Unit 4, Leedsgate Farm Business Park.  
Kings Cliffe Road. Wansford PE8 6NX.  
07748 787360  
[woodlandtimber.products@yahoo.com](mailto:woodlandtimber.products@yahoo.com)




**WANSFORD COMMUNITY HALL**  
Peterborough Road, Wansford  
This hall accommodates parties of up to 36 people seated. Ideal for Meetings, Workshops, Aerobics etc  
GREAT VALUE AT ONLY £8 per hour\*  
FOR BOOKINGS TELEPHONE  
[clerk@wansford-pc.gov.uk](mailto:clerk@wansford-pc.gov.uk)  
\*discounts available to residents

*Capitol Lettours* Your local property agent  
With over 30 years of experience  
Relocation, Lettings and Sales

Please call our office for a competitive quote  
Peterborough - 01733 553366  
([enquiries@capitollettours.com](mailto:enquiries@capitollettours.com))  
[www.capitollettours.com](http://www.capitollettours.com)



**BCN MULTICLEAN**

Dry carpet cleaning and upholstery cleaning services in Peterborough and the surrounding areas.  
Whether you have an individual chair or carpet in a domestic property, or are interested in contract carpet cleaning in your business, you can benefit from our 35 years experience.

Telephone: **01832 280429**  
Mobile: **07951 124374**  
Email: [info@bcnmulticlean.co.uk](mailto:info@bcnmulticlean.co.uk)

**OLD STATION YARD NASSINGTON**

**GRIFFIN FUELS**  
Quality Smokeless Pre-Packed Fuels  
Kiln Dried Wood / Kindling / Bottle Gas  
  **01733 380470**  

**TAGGFX** Signage Solutions  
Graphic Design  
Vinyl Graphics  
**07834-906-206**  
[info@tagsigns.co.uk](mailto:info@tagsigns.co.uk)  
Est. 2006

COREL DIBOND Roland mactac  3M 

Nassington  
**Self Storage**  
[www.nassingtonselfstorage.co.uk](http://www.nassingtonselfstorage.co.uk)  
Tel: **01780 782540**






# NEED A RECOMMENDATION?

The **ONLY** DBS Checked  
recommended register of  
local vetted traders



**FREE** and **EASY** service

**safelocaltrades.com**<sup>®</sup>



Recommended & Approved



*Much more than just a recommendation ...*

## Serving the PE Postcode community since 2008

*Over 70 different trade categories and over 18,000 reviews*

Here are some of our members ...

**New Garage Door & Repairs**



**GARAGE DOOR &  
SHUTTER SERVICES**

[www.garagedoorandshutterservices.co.uk](http://www.garagedoorandshutterservices.co.uk)

Call Dave on

**07709 337647**

**Electrician**

**OLD COURT  
ELECTRICAL**

[www.oldcourtelectrical.co.uk](http://www.oldcourtelectrical.co.uk)

Call David on

**07973 507420**

**Loft Insulation & Boarding,  
Cavity Wall Insulation**



**A TO Z  
ENERGY SOLUTIONS**

[www.atoz-energy.co.uk](http://www.atoz-energy.co.uk)

Call our Office on

**01480 589968**

**Building & Carpentry Services**



**Steve Deprez & Son**  
Building • Brickwork • Carpentry

*Preserving the past. Building the future*

[stevedeprezbuilders@gmail.com](mailto:stevedeprezbuilders@gmail.com)

Call Steve on

**07414 292188**

**Gutter Cleaning & Repairs**

**THE  
GUTTER CLEAN  
COMPANY**

[www.guttercleancompany.com](http://www.guttercleancompany.com)

Call Jeremy on

**0800 179 9363**

**Roofing Specialist. Fascias,  
Soffits & Guttering**

**Synergy  
Roofing**

[www.synergypoofing.co.uk](http://www.synergypoofing.co.uk)

Call Simon on

**01733 711721**

**Kitchens & Bathrooms**

**APG BATHROOMS**

[www.apghomeimprovements.co.uk](http://www.apghomeimprovements.co.uk)

Call Aaron on

**01733 568651**

**Double Glazing Repairs**

**Nene Valley UPVC  
REPAIR & MAINTENANCE**

[www.nenevalleyupvcrepairs.co.uk](http://www.nenevalleyupvcrepairs.co.uk)

Call Andrew on

**01733 795204**

**In association with ...**



**Neighbourhood and  
Home Watch**  
Looking out for the community



**CAMBRIDGEHIRE & PETERBOROUGH  
AGAINST SCAMS PARTNERSHIP**

To see our full list of members and read all reviews just go to ...



**[www.safelocaltrades.com](http://www.safelocaltrades.com)**



**0800 014 1832**



The safest way to source local traders

**Tear out page and keep**

# WORSHIP DATES

Every Sunday 5.00pm - Zoom 'At Home' Service. Log in and phone details from Rev. Jane [jdetailby@aol.com](mailto:jdetailby@aol.com) 01780 782271  
 Every Wednesday: 10.00 a.m. Morning Prayer – Wansford Every Thursday: 9.30 a.m. Holy Communion BCP - Nassington

## St. Leonard's, Apethorpe

2 <sup>nd</sup>	11.00 a.m.	Holy Communion
16 <sup>th</sup>	11.00 a.m.	Holy Communion
30 <sup>th</sup>	9.00 a.m.	Said Holy Communion

## St. Mary's and All Saints, Nassington

Every Thursday 9.30 a.m. Holy Communion BCP		
2 <sup>nd</sup>	8.15 a.m.	Holy Communion BCP
2 <sup>nd</sup>	9.30 a.m.	Songs of Praise
9 <sup>th</sup>	9.30 a.m.	Holy Communion
16 <sup>th</sup>	3.00 p.m.	Craft Service
23 <sup>rd</sup>	9.30 a.m.	Holy Communion

## St. Andrew's, Thornhaugh

2 <sup>nd</sup>	9.30 a.m.	Morning Prayer
16 <sup>th</sup>	9.30 a.m.	Holy Communion

## St. Mary Magdalene's, Yarwell

9 <sup>th</sup>	11.00 a.m.	Holy Communion
16 <sup>th</sup>	3.00 p.m.	Methodist Service
23 <sup>rd</sup>	11.00 a.m.	Holy Communion

## St. Mary's, Wansford

Every Wednesday 10.00 a.m. Morning Prayer		
Wednesday 5 <sup>th</sup> March	10.00 a.m.	Ash Wednesday Holy Communion and Ashing
9 <sup>th</sup>	9.30 a.m.	Holy Communion
23 <sup>rd</sup>	9.30 a.m.	Holy Communion

## St. Mary's. Woodnewton

2 <sup>nd</sup>	9.30 a.m.	Holy Communion
16 <sup>th</sup>	9.30 a.m.	Holy Communion
23 <sup>rd</sup>	8.30 a.m.	Holy Communion BCP
30 <sup>th</sup>	10.00 a.m.	Informal Mothering Sunday Service with Posies and Crafts

## CASTOR BENEFICE

We are still maintaining the following service pattern every Sunday in each of our **Parish churches** until further notice.

**Marholm** 9.00am - Holy Communion (Morning Prayer on 4th Sunday)

**Castor** 8.00am Holy Communion (said service) 10.15am - Sung Eucharist

**Sutton** 9.00am on 4th Sunday of the month - Holy Communion

Every **Wednesday** morning at **10am** there is a service of Holy Communion at **Castor**.

We still continue to celebrate **Evensong via Zoom at 6pm every Sunday**, if you wish to join us please contact the Benefice office for the Zoom link and access code.

[admin.castor@btconnect.com](mailto:admin.castor@btconnect.com)

The next service at St. John the Baptist, Stibbington will take place on Easter Sunday, details to follow next month ...look out for local posters.

**David Ridgeway**

This year, March begins the season of Lent, with the first day, Ash Wednesday on the 5th and there will be a service to mark the day at

## REFLECTIONS

Wansford at 10 a.m. Lent, of course, is the season of preparation and penitence the precedes Easter, as Christians reflect upon their life with God, how they may have strayed from his path and that Jesus died for the sins of the world. It is important that we reflect upon our sinfulness, although that is perhaps not a popular word these days, but the original meaning of the word Lent can help us to see this season in a positive light. Lent comes from an Old English word meaning "spring season", and I have a book I often read during Lent called God's Springtime. On a cold, dull February day as I write this, I know we are all looking forward to spring with the new growth in gardens, fields and countryside, buds forming and little green shoots pushing their way up out of the soil.

Maybe some might remember the scene from *The Wind in the Willows* when Mole deserts his spring cleaning deep within his little home and "scraped and scratched and scabbled and scrooged" up through the ground, muttering 'Up we go, up we go,' feeling the call of spring and wanting to be out in bright air. It seems to me that Lent is like that, a call to "scrabble and scrape" through whatever keeps us from the bright air of God's love and life. Clearing away the debris from our lives, whatever that might be, is a good way to celebrate the coming of spring, whether we note Lent or not. What keeps us from living life fully, what is harmful for us and keeps us from being the person we could be, what gives us life, what needs to be restored and cleaned?

We all know that a good spring clean takes effort and Lent, though it can be joyful, is like that. For Christians it is a time of discipline and devotion in a particularly focussed way, but we all take a break now and again. In the Church, Mothering Sunday, or Mothers' Day is one of the days. Halfway through Lent, we have a day of refreshment. Mothering Sunday has many special themes; a thanksgiving for those we love, our families, those who give us life, and a rejoicing in our churches as well. This year, Mothering Sunday is on 30th March and as you will see from the services list, we have a special celebration for our group of parishes (benefice) at Woodnewton Church at 10 a.m. that day. It will be an informal service, but of course there will be the traditional posies, but we'll have crafts and activities as well. All will be welcome!

Whatever you will be doing spring, whatever you are looking forward to, may it be a time of blessing for you.

*With every blessing,*

*Rev'd. Jane*



**WOODNEWTON CHURCH**

**Sunday, 30<sup>th</sup> March**

**10.00 a.m.**

**Mothering Sunday**

**(Mother's Day)**



**Come and join us for a special service  
for all  
with posies and crafts.  
ALL WELCOME!**

**The Friends of St Mary's and St Andrew's**

Thank you to everyone who has continued to support Coffee Stop over the winter; in turn, we have been able to continue donating to Thorpe Hall.

The next Coffee Stop will be **Wednesday 12th March from 10.30** in St Mary's church after Morning Prayer, and there will also be a frugal Lent Lunch on **Wednesday 26th March at 12**. Proceeds from this will go to the Peterborough Light Project.

Many thanks

**Caroline Ashley**

**MOBILE HAIRDRESSING**

Ladies & gents hairdresser with over 30 years experience.

If you are housebound, have reduced mobility, no transport or simply prefer the convenience of having your hair done at home, I have daytime appointments available. Fully insured. Competitive prices.

**Please call Tracey on 01780 782467**



**BARKLEYS GARDEN SERVICES**

**Your LOCAL Gardening Team**

Regular garden maintenance

Lawn care and mowing

Hedge trimming

**Lady gardener available**

Get in touch by calling

**Bev - 07593 721144**

**Peter - 07747 502471**

**[beverleybarkley1@gmail.com](mailto:beverleybarkley1@gmail.com)**

## THE SPECIALISTS IN HEALTH CARE

### *Podiatry & Chiropody*

Nail Surgery For Ingrown Nails, (BUPA Registered), Routine Nail Care Biomechanics & Orthotics, Diabetic Foot Care, Verrucae, Corns, Cracked Heels, Fungal Nail Treatment, Calluses, Hard Skin, Nail Reconstruction

### *Shock Wave Therapy*

*Plantar Fasciitis, Morton's Neuroma, Achilles Tendinopathy, IT Band Syndrome, CTPS etc*  
Therapy beneficial for pain relief from muscles & tendons, a course of 5 sessions given over 10 weeks.

### *Ear Wax Microsuction*

*Ear Ache? Hearing Loss? Blocked Ears? Pre Hearing Test Clean?*

It could just be wax! Safe, Gentle and Effective Ear Wax Removal

### *CryoAesthetics for Skin Lesions*

*Safe, Quick and Comfortable Cryotherapy Treatment for:* Skin tags, Freckles, Age/Liver Spots, Milia, Fibroma, Seborrheic Keratosis, Solar Lentigo, Cherry Angiomas, Verrucae and warts, Popular nevi (moles, birthmarks)



**01780 782200**

wansfordinstep@gmail.com

*Sue Arnold BSc(Hons) MRCPod & Associates*

19 Elton Road, Wansford PE8 6JD



Our family, caring for yours

## Castor Lodge Care Home

Residential, Dementia  
and Respite Care

Our care is the kind we'd all want our loved ones to receive. Castor Lodge is luxurious and beautifully furnished whilst retaining a warm, homely atmosphere.

To book your tour call

**01733 731455**



Splash Lane,  
Castor, Peterborough,  
PE5 7BD



Celebrating the VE Day 80th Anniversary

Over the last few weeks there has been considerable publicity surrounding the 80th anniversary of VE Day on the 8th May 2025. VE day marked the end of the second world war in Europe and the start of the return to normal life.

Wansford Parish Council intends to hold a beacon lighting outside the Stables, Old Leicester Road at 6pm and wishes to encourage a series of street parties so that neighbours can get together to celebrate. This street party format has worked well in the past for royal jubilees and similar events. It is very easy to organise as all it needs is for each part of the village to decide who is going to run the local event. Provided the celebrations do not intrude onto the highway, there is no need for any permits or similar. Enjoy yourselves!

Richard Clarke

NEWS FROM WANSFORD PHARMACY

Promote Your Health with Our Pharmacy Services This World Sleep Day!

On March 14th, we hope you join(ed) the global conversation about sleep health as we celebrate World Sleep Day. Getting good quality sleep is non-negotiable, being essential for our health and overall well-being. Unfortunately, many people struggle “in silence” (not in the case of snoring!).

Poor sleep affects the sufferer’s health and that of their sleep partner or wider family, and even relationships. For example, untreated obstructive sleep apnea (OSA) can lead to serious health complications, including heart disease, stroke, and diabetes. It can also cause mental health issues and increase the risk of accidents.

As your trusted local community pharmacy, we’re here to support you in achieving better sleep through personalised advice, effective products, and expert guidance. Sleep is vital for physical and mental health. It helps repair cells, regulate mood, and even boosts immune function. However, with the stresses of daily life, the demands of work, and even the effects of technology, many people find themselves battling insomnia or poor sleep quality. This World Sleep Day, take a step toward improving your sleep habits and getting the rest your body needs.

Many people turn to over-the-counter sleep aids but these have a limited role in sleep disorders, often having a negative effect on sleep quality. They may provide immediate relief, but are often addictive and can mask a more serious issue that requires specific intervention. Our pharmacist and team will advise you on safe usage, potential interactions, and the best options for your needs including a refusal of the sale if sleep aids are deemed inappropriate.

Our pharmacy offers a **Sleep Screening Service** designed to investigate your sleep and signpost you to the most appropriate treatment or specialised healthcare professional. We are proud to be the first UK pharmacy to offer such a service. Underpinning all of this is **Lifestyle Advice**. Often, improving sleep involves making simple lifestyle changes. Our pharmacy team can provide tips on proper sleep hygiene, and creating a sleep-friendly environment in your home, as well as an evidence-based weight management programme called NewWeigh.

Celebrate World Sleep Day by taking the first step toward better rest and a healthier, more energized you. Whether you're dealing with snoring, insomnia, restless nights, or sleep disruptions, our pharmacist has the necessary sleep training to support you to the quality sleep you deserve!



## STIBBINGTON & WANSFORD WI

### Today's women working for tomorrow's world

On a cold and damp February evening, our speaker Sidney Aldridge the Chef director of Fortnum & Mason entertained us with a potted history of the ionic store, and his role within the organisation.

After training as a chef in Scotland, Sidney moved to London working in a number of high end establishments including The Ritz, and Harrods, before joining Fortnum & Mason in 2013. Here, he was part of the teams that have developed the founding store in Piccadilly as well as new stores in London and around the world. The very first store situated on Duke St was opened in 1707, by William Fortnum & Hugh Mason, and candles were their first product. This was soon followed by food products, including the hampers that F&M are well known for, as a day at the races became the thing to do. Picnic food was in high demand, which led to the

invention of the scotch egg for their hampers. The reputation of the store grew, and has had many famous customers, with Charles Dickens becoming a regular shopper. From across the ocean, Mr Heinz visited in 1886, and F&M became the first store to sell baked beans in the UK. The store achieved its first royal warrant in 1910, and has continued to have royal connections over the centuries, that still continue with the royal warrants from our present King and Queen.



The ionic eau de nil colour was first adopted in 1840, when the windows were painted, and continues on the paintwork, packaging and marketing.

The store continued to expand and in 1922, there was a department created dedicated to expeditions. In 1951, the store was taken over by The Weston family, which allowed for a redevelopment of the store. Sidney joined in 2013, and oversaw the new store at St Pancras, as well as the bar in Heathrow terminal 5. This was followed by the restaurant – 45 Jeremy St, the store at Royal

exchange London and the store in Hong Kong. For Sidney the most exciting project was the Food & drinks studio opened in store to allow for demonstrations, cookery book promotions, chef training & other dining events. In addition his association with the contribution of surplus food products to the Felix project which is the largest food redistribution charity for food banks, charities, primary schools & holiday programs in London.

Winter is here, so our monthly meeting will take place in Wansford Community Hall, other meetings, please check each individual event. If you wish to attend one of our upcoming meetings to hear one of our visiting speakers, please get in touch. Please see below for our upcoming events:

**Tuesday 11th March 2025, 7pm** WI meeting, Annual General Meeting, and donation to T-21 Charity.

**Tuesday 4th March 2025, 2-4pm** Coffee, Cake & Craft club, at Wansford Community Hall.

**Tuesday 18th March 2025**, visit 'The longest yarn exhibition' at Peterborough Cathedral 2pm

**Tuesday 8th April 2025**, WI meeting, Katherine of Aragon, Speaker Tim Albon Jones, venue Peterborough Cathedral

**Book Club meeting**, at The Cross Keys Wansford, 27th March 2025

Both the Coffee & Craft club, and Book Club are open to all, (not just for WI members) and we look forward to others joining us.

Rhona Punter, email - [rhonapunter@aol.com](mailto:rhonapunter@aol.com)

theWI  
INSPIRING WOMEN





## A Trusted. Affordable. Dedicated Care Solution.

- One to one Care Coordinator for all types of care.
- 12 hours a day/365 days a year contact and backup.
- 1st line of contact removing family burden and worry.
- A one stop bespoke coordinated care solution.
- Thrive at homes/care homes with better outcomes.
- Our work is limitless for our clients.
- Reduced care costs for families and clients.
- Long-term proactive support team.
- Combined experience of 100 years professional service.
- Outstanding results delivered with compassion and expertise.

Contact us today on: [info@mycarecoordinator.co.uk](mailto:info@mycarecoordinator.co.uk)

[www.mycarecoordinator.co.uk](http://www.mycarecoordinator.co.uk)





# H HEARTYS

*of Peterborough*

Car buying made easy with over 30 vehicle manufacturers on site and 200+ cars in stock

Fantastic part exchange prices offered with fully comprehensive warranty on all purchases

*Peace of mind motoring for over 50 years*  
[www.heartysofpeterborough.co.uk](http://www.heartysofpeterborough.co.uk)

01733 560605  
 Unit 10 Flaxley Road,  
 Peterborough, PE2 9FT



## Georgina's

*Curtains & Keepsakes*

**Covering all the Villages**  
 Stamford to Stibbington  
 (and everywhere inbetween!)





Bespoke handmade curtains, roman blinds and soft furnishings to complement your home.  
 For a free consultation and quote call 07957 686595  
[www.georginascurtainsandkeepsakes.com](http://www.georginascurtainsandkeepsakes.com)







# Helping people build successful businesses and personal wealth for almost a century

## Our services include:

- Audit and Accountancy
- Business Acquisitions and Disposals
- Business Plans and Projections
- Corporate and Personal Taxation
- Grant Funding
- Payroll, Bookkeeping and VAT
- Tax Planning and Mitigation

For more information,  
please contact us:

 **01733 560160**  
[moorethompson.co.uk](http://moorethompson.co.uk)

Peterborough | Spalding | Wisbech | Market Deeping | Stamford

Moore Thompson is registered to carry on audit work in the UK  
by the Institute of Chartered Accountants in England and Wales.



## Plumbing & Heating

- Boiler Replacement
- Boiler Repairs
- Cylinder Changes
- Heating Systems
- General Plumbing
- Heating Controls

## Bathrooms

- Bathroom Installation
- Baths / Basins
- Toilets
- Wetrooms

Contact us today to discuss your requirements!

**Mobile:** 07846 428600 / **Office:** 01733 590501

**Email:** james@willowservices.co.uk

[www.willowservices.co.uk](http://www.willowservices.co.uk)



TEL: 01733 813385

[WWW.JASMINEMASSAGE.CO.UK](http://WWW.JASMINEMASSAGE.CO.UK)

**Deep Tissue Massage, Swedish Massage, Thai Aromatherapy**

**Infrared Sauna**

**Open - 10am to 8pm Monday to Sunday**

**Book Online or Walk In**

**[www.jasminemassage.co.uk](http://www.jasminemassage.co.uk) TEL: 01733 813385**

**Gift Vouchers** available for any occasion

7 Wentworth Street, Peterborough, PE1 1DH

## WANSFORD PARISH COUNCIL



Wansford Parish Council met on the 10th of February and welcomed Alison Hurford, our new Clerk. Alison has been the Clerk at Southorpe parish for the last two years and we are confident that she will sort out all the administrative issues that have built up over the last 18 months without a permanent Clerk.

The Council discussed a planning application from the owner of 21 Nene Close to provide two additional parking places and a turning area within an extension to his garden. This was discussed at length and felt to be appropriate and advantageous to the village as the present turning areas always have parked cars in them. We have asked that all trees remain and low hedges are used instead of fences to enclose the extended garden area.

The Parish Council has prequalified for a grant from Peterborough City Council to install solar panels and a battery system for the community hall to reduce the energy requirements and consequently the running costs. The detailed application will be submitted by the end of February.

We had a fire safety check on the Community Hall from the fire service who raised a few eyebrows by turning up in a full-sized fire engine. No major problems were found, just emergency lights to be replaced, including extra outside lights, and displaying an updated fire certificate. Electrical items such as the kettle should be PAT tested. The main point of the visit was for the fire service to make notes about the Hall to improve their response if there was an incident.

The loft of the community hall has been sprayed to eliminate woodworm, the insulation has been improved and a walkway has been built down the middle to allow access with the thicker insulation. The final insulation layer will be laid when the electrician has finished work.

A schedule has been produced for village maintenance and a working party meeting will take place on Monday 24th February to discuss how this is going to be carried out. Clearly some items are down to Peterborough City Council but their current budget problems mean that many items can only be addressed by village working parties.

The discussions are ongoing as regards restricting width over the Village Bridge but this is now in the hands of Peterborough City Council. There are no major objections to this but it does seem to be taking a long while to come to fruition.

We've had no response yet from National Highways asking for copy of the risk assessment under which they chose to direct pedestrians to walk across the live A1 carriageway instead of under the bridge and through the picnic site.

A meeting to move forward the Neighborhood Plan was well attended and it was reported that the group would try to incorporate plans for parts of adjacent parishes. Many useful contacts have been made and a section will be added to the council website. There will be a further meeting in March.

There seems to be an increase in dog fouling in center of village which is not at all pleasant to report. Can owners please be more responsible and pick up their dog's droppings. There are plenty of bins around the village.

From the beginning of May there will be a vacancy for a new councilor to join Wansford Parish Council. Please contact the Clerk on [clerk@wansford-pc.gov.uk](mailto:clerk@wansford-pc.gov.uk) if you are interested in contributing to the wellbeing of the village.

**Councilor Graham Garner**



## **Report on Wansford Parish Council's 13th January 13th 2025 meeting.**

With all councillors present we carried out all the statutory duties of the council to approve payments, and approve prior minutes etc and then we moved onto village matters.

A good discussion was had around improvements to our Community Hall, which as the old post office telephone exchange building requires some improvements. Along with the Community Hall Management Committee there have already been improvements made internally with new lights, smoke detectors and other ancillary items to brighten up the space and provide free WiFi. The next stages are more structural or unseen with work in the loft nearly complete to protect against woodworm and install new insulation to retain warmth in the building. We also have a stonemason and a roofer looking at some issues with the stonework and an electrician has been booked in to fit a new kitchen heater, replace the hand dryer, upgrade the emergency signage and carry out a full electrical safety test.

The aim of this work is to ensure we continue to attract users for the hall. It is a great little space at very good rates which is being used for many groups already but we do need to increase its use. Please spread the word should you know anyone in need of a handy little hall.

We also raised the traffic issues across the Wansford Bridge again, and all parties are on board to get traffic measures in place to restrict overweight vehicles. We continue to work on restricting speed and congestion for residents. It is now a financing issue to get this to resolution. We additionally agreed to apply more pressure on National highways to re-open the footpath under the A1 as there have been many poor reasons (in our opinion) as to why it is yet to be re opened. We will keep pressing on this.

On other village matters we agreed to set up a general walk around in March to just see and hear of any maintenance needed, improvements we can make or general comments or thoughts from residents. – Watch this space to get some dates if you have any comments, improvements or other points of discussion that would provide a hearty chat.

It would be great at any meeting to hear comments from residents, especially if we don't normally hear from you. You may well have a view we have not considered so please come to a meeting or contact us via the website at [www.Wansford-pc.gov.uk](http://www.Wansford-pc.gov.uk)


**Councillor Graham Stevens**

## **SIBSON-CUM-STIBBINGTON PARISH COUNCIL**

The date of the next PC meeting, which is the 27th March, starting at 7pm in the Christie Hall. A report will appear in a future edition of Living Villages.

## **THORNHAUGH PARISH COUNCIL**

The next Thornhaugh Parish Council Meeting will take place at 7.00 pm on **10th March 2025** in St Andrew's Church, Thornhaugh. A report will appear in a future edition of Living Villages.



## Men's Breakfast Meeting

An informal bi-monthly social gathering for men from local villages to meet for breakfast and hear from an invited speaker. Interested? Contact [mensbreakfast@sulehay.co.uk](mailto:mensbreakfast@sulehay.co.uk)

New members welcome



1st February 2025

5th April 2025

Queen's Head  
Nassington  
08:30hrs - 10:00hrs  
£15 per head

## Paws and Claws



Boarding Cattery

*"Cats have a 'tail' to tell when they've 'paws'd' awhile at Wansford's 5 Star Purr Palace"*

Tel 01780 782174

e-mail

[pawsandclaws@hotmail.com](mailto:pawsandclaws@hotmail.com)

Working with Peterborough Cat Rescue to rehome cats and kittens seeking loving homes and laps on which to purr

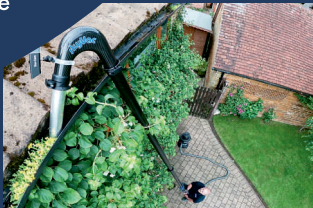
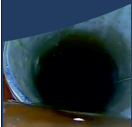
Peterborough City Council & Rutland County Council  
Licence Number: 078015



## Perfect Drainage Solutions

Your Drainage Experts (est 2023)

Gutter Cleaning  
CCTV Drainage  
High Pressure Water Jetting  
Drain Blockage Clearance  
Tanker Service  
Repairs



**07817723610**

[info@pdsLtd.co.uk](mailto:info@pdsLtd.co.uk)

[www.perfectdrainagesolutions.co.uk](http://www.perfectdrainagesolutions.co.uk)



Registered  
Business




**jc heating**  
SERVICES

Oil boiler servicing and  
repairs, heating controls,  
hot water service and repairs.

Your local heating expert for  
over 15 years.

Jo Childs,

8 Black Swan Spinney,  
Wansford.

**Mob : 07729036942**

## Wansford & District Horticultural & Craft Society 'Back to Our Roots' Annual Show

*Would you like to have a go at growing a few vegetables? Do you want to try another aspect of a healthier, more eco-friendly way of life?* We have a plan to get Back to Our Roots and start a growing revival in Wansford and surrounding villages. We are delighted to be working in partnership with our **Show Sponsor Living Villages Magazine**.

Now is the time to plan, get your hands dirty and start growing your own! Whether you have a vast garden, tiny courtyard, or a small balcony, anyone can grow delicious healthy vegetables. We're passionate about connecting with nature. Why not join the expanding community of home gardeners who are turning their outdoor spaces into flourishing havens of nutritious harvests? Plus... they taste sooo good.

Growing is a great family activity for members of all ages. As well as bringing family and friends together, it is the perfect activity to reduce stress, improve mood and increase your feelings of wellbeing.

We are here to support and encourage you to create a stunning outdoor area with all the guidance you'll need. Then when all your produce is ripe - you can enter it in to the Annual Show and showcase your fantastic new skills.

Every month we will be running articles in **Living Villages Magazine** to help you on the way with your new passion. Watch out for posts on Facebook too.

**Quentin Arnold**

Annual Show Committee Chairman



'The independent local magazines for Water Newton, Thornhaugh, Stibbington, Sutton and Wansford'

[www.businessfinders.co.uk](http://www.businessfinders.co.uk)



### March - Where Do I Begin?

#### *With half price seeds, of course!*

We are asking you to grow: **Runner Beans, Dwarf French Beans, Cherry Tomatoes, Tomatoes, Cucumbers, Courgettes, Chilli Peppers and Pumpkins**

Order on line from [www.dobies.co.uk](http://www.dobies.co.uk). Enter the Name of Society etc as 'Wansford-Thornhaugh Hort Sos'. Use the unique Order Code SUGD111M Purchase a bag of Compost for Seeds (approx. £7 for 20 litres)

#### **Recycle containers!**

Collect pots from your recycling bin. Punnets, cut down milk bottles or soft drinks bottles, egg boxes etc all make perfect seed trays. Make sure they are clean, porous or make drainage holes. Fill your pots to about 2/3 full with compost. Plant your seeds as per the instructions on the packet. Water, keep warm (kitchen window sill?) and wait for your seedlings to sprout. Keep them warm and moist. If you need a bit more advice, why not come along to our **Sowing Workshop on Sunday 16th March 10.00am-11.30am at 19 Elton Road, Wansford. Free Advice, Cost £1 per planted seed. Booking please by email to [suearnold474@gmail.com](mailto:suearnold474@gmail.com)**

## Support Nassington primary school – three easy ways to help!

FONS (Friends of Nassington School) is a charity run by parents and teachers to raise funds that support and enrich the education of children at Nassington School. Every penny we raise goes directly to the school – from classroom and playground equipment to funding school trips and activities. But fundraising is getting tougher, and we would love our community's support.

Here are three simple ways you can help us to raise more funds:

### 1. **Recycle Your Clothes**

Got unwanted clothes, shoes, belts, towels or sheets? Drop them in the green clothes bank in the car park outside school. FONS gets paid directly for donations to the bin so it's a win-win – you declutter, and the school benefits!

### 2. **Play the School Lottery**

Play our weekly school lottery online at **YourSchoolLottery.co.uk**. It's just £1 per ticket, with 40% of all ticket sales coming straight back to FONS. There are weekly cash prizes of up to £25,000, plus a cash prize for at least one ticket sold on our school page each week. To sign up, visit **yourschoollottery.co.uk**, click on play and type Nassington School in the search bar.

### 3. **Raise Money through Online Purchases**

Easyfundraising is a simple way to support school while you shop online at no extra cost to you. Sign up for free and whenever you shop with participating retailers (including Amazon, John Lewis and most major supermarkets), they'll donate a percentage of your purchase to us. It's effortless fundraising, which so far has helped us to raise nearly £1000!

Just follow the steps below to get started:

1. Visit **easyfundraising.org.uk**

2. Click on 'Find a Cause' and search for 'Friends of Nassington School'

3. Download the browser extension and add your favourite shops

Every contribution, big or small, makes a difference. Thank you for being part of our wonderful community and helping to support Nassington School!

## Help support Nassington School



All the money we raise goes directly to school to support and enrich the education of children. Thank you for your support!



# VAL-TECH SOLUTIONS

"Excellence comes as Standard"

## Professional Valeting

Call Adrian on  
**07971966515**

### Mobile valeting services

'Professional' valeting carried out at your home or place of work. Our fully equipped vans are self-sufficient with water and power. Only top quality products used to complete your valet to a high standard.

Private and corporate work undertaken, Guaranteed professional results from Professionally trained valeters.

Full range of valeting programmes available: Mini valets to full detailing work and paint rectification

Please call us on – 07971 966515 for your booking or enquiries



**VAL-TECH SOLUTIONS LTD**

Peterborough

07971966515 [adrian@val-techsolutions.co.uk](mailto:adrian@val-techsolutions.co.uk) | [www.val-techsolutions.co.uk](http://www.val-techsolutions.co.uk)





**PROFESSIONAL CARE  
YOU CAN TRUST**

*A home like no other*

**We Offer:**

- Luxury setting + Fabulous Views
- Outstanding Care
- Excellent Food + Own Chef
- Cinema, Gym and Hairdressing Salon
- Nurses on duty 24 hrs a day
- Private Dining Facilities
- Beautiful Café and Bar
- All Inclusive Fees, No Hidden Extras

**Residential | Dementia | Nursing & Respite Care**



**Call us now**  
**01780 432610 / 07551 945608**

**Grand View Care Home**  
Uffington Road Stamford Lincolnshire PE9 2EX

grandviewcarehome  
grandviewcarehomeuk  
laura.mills@galsiacaring.co.uk  
www.grandviewcarehome.co.uk



**yes  
you  
can**  
with  
**Slimming  
World**

*Come along and say hello  
at our Wittering Group*

**Wittering Parish Hall  
Townsend Road  
PE8 7TG**

*Every Wednesday at  
5pm or 6.30pm*

**Contact:  
Debra 07880567310**

**slimmingworld.co.uk**

  
touching hearts, changing lives



**Just ask**

Making the right decisions can be stressful at the best of times, but we are here to help. Whatever's on your mind, just ask.

**TOBIAS COLTON** BA(Hons) DipPFS  
Principal  
**TOBIAS COLTON WEALTH MANAGEMENT**  
Associate Partner Practice of St. James's Place Wealth Management  
07468 428 380  
tobias.colton@sjpp.co.uk  
www.tobiascoltonwealthmanagement.co.uk



The Partner Practice is an Appointed Representative of and represents only St. James's Place Wealth Management plc (which is authorised and regulated by the Financial Conduct Authority) for the purpose of advising solely on the group's wealth management products and services, more details of which are set out on the group's website [www.sjp.co.uk/products](http://www.sjp.co.uk/products). The St. James's Place Partnership and the titles 'Partner' and 'Partner Practice' are marketing terms used to describe St. James's Place Representatives.

SJP12026 V1 (04/20)

## NEWS FROM WANSFORD AND KINGS CLIFFE PRACTICE

Statistics play a critical role in lots of areas within healthcare. They provide a systematic way to collect, analyse, interpret and present data. At Wansford Surgery, we regularly review our 'numbers'. This helps us to identify trends and make any adjustments or address issues. In this newsletter, we have published some data as we think it is interesting.



The following data is taken from 1 month during the first quarter of the year.



Here are some additional insights into our recent practice activity:

Phone Calls: Average time to answer a call: 1 minute 52 seconds

Calls triaged for on-the-day appointments or telephone advice: 1,103

Online Services: Online consultations/queries submitted via our website: 240

Appointments: Emergency nurse appointments 38, Emergency GP appointments 237

Blood test appointments: 605

Appointments booked online: 206

Cancellations & Reallocations: Appointments cancelled by the practice due to GP/nurse illness: 113 Appointments cancelled by patients and successfully refilled: 307

If you are unable to attend your appointment, please let us know as soon as possible. Last-minute cancellations or missed appointments mean another patient misses out on the opportunity to be seen. By cancelling in advance, we can offer the slot to someone else in need. Thank you for helping us provide the best possible care to all our patients.

## Thornhaugh Litter Pick Update

### **Saturday 1st March. 11.30 am.**

Meet at Thornhaugh Church

Bags and grabbers provide. Please wear suitable shoes , gloves and hi vis clothing .

We look forward to seeing you.

enquiries to [nikki@4stonecottage.co.uk](mailto:nikki@4stonecottage.co.uk)



**Call Glen anytime on 07771 784643**

## **Boat Hire on The River Nene**

Day/Weekend/Long term hire

Gilly fishing trips (full kit available)



## **Local Fabrication and Site Welding**

Repairs or New Builds

Gates/Fences/Farm Machinery

Any job never too small



## **Local Log Delivery**



All logs cut to order

Mobile logging service

Mobile log splitting service

Dead tree felling service



# BATTLEFIELD BADGERS



## PRESENT A **CHARITY EVENT** IN AID OF **H****LP** for **HEROES**



**Friday 21st March 2025**  
**at Mattoni Eye Restaurant**

2 Peterborough Road, Eye, Peterborough PE6 7YB

**Entry at 6.30pm**

**Starts at 7pm**

**£40 per ticket**

which includes a buffet meal, an evening of comedy,  
entertainment by Stevie Bull, an auction, a mega raffle  
and more! Entry at 7pm.



**A limit of 80 places so don't miss out!**

Tickets available at Mattoni Eye, Sharons Snack Shack in Eye or contact  
Steve Bedford on 07944 422112 or email [stevebedford00@yahoo.co.uk](mailto:stevebedford00@yahoo.co.uk)



# Wansford Horticultural & Craft Society

Thank you to the 27 hardy souls who came on our Burghley snowdrop walk on 7th Feb with Joe Whitehead (Burghley Head Gardener). The walk that covered both public and private gardens, and we certainly were entertained and learned so much about snowdrops and the plants making a colourful show at this time of year. Thoroughly recommended and some great comments below.



*'Joe should be on TV and give Monty a nudge '*

*'Joe is so knowledgeable and enthusiastic, we at Wansford are very lucky to have the close association with Burghley '*

*'Super visit today, very interesting and lovely to see winter flowers! If you could make it warmer for our next outing that would be grand'*

*'Thank you for organising the Snow drop walk today, it was excellent. Joe gave a fantastic tour. It is wonderful to see so much of the Burghley estate. We are so lucky to have the estate on our doorstep. I would definitely do it again.'*

## Future Events

1. We have a great social evening planned on 13th March 'Horti-Talk' (see opposite)
2. On 4th April we will be visiting the gardens of the Herb Nursery at Thistleton.
3. Also, in April we will run our annual Plant Sale to raise proceeds for Sue Ryder Thorpe Hall. If you have any plant donations then please contact me. Your surplus plants and seedlings are most welcome.

**If you wish to get involved in any of the above, please contact [Rhonapunter@aol.com](mailto:Rhonapunter@aol.com).**

Gary Punter  
Chairman

# *Social Evening 'Horti-Talk'*

Discuss solutions to our knotty Spring challenges over a glass of wine

*1930hrs Thursday 13<sup>th</sup> March, Christie Hall*

*Horticultural Society Members free, £2 for non-members (very welcome)*



None of us know everything. Together we know much more !



For both experienced gardeners and beginners, we will be discussing:

Making the most of our pots and containers.

Growing Wildflowers is easy?!?

Encouraging wildlife into our gardens.

Getting started with growing vegetables.

Pruning roses and fruit trees.

This is a bit of an experiment for our Society and do hope you will come along and support us. We are aiming for around 30 people to make it fun.

Please Contact [rhonapunter@aol.com](mailto:rhonapunter@aol.com) to book a place

## THE CHRISTIE HALL

Elton Road, Wansford  
(registered charity no 1033998)

A well-equipped hall  
with large kitchen and parking.

**Available for parties,  
receptions,  
meetings,  
activity groups  
and most types of private functions**



For more information  
and details on how to book  
visit our website

**www.christiehall.co.uk**

## FREE QUOTATIONS & ADVICE

**07932 970 225**

**info@jhroofandhome.com**



- Roof Repairs / Maintenance / Renewal
- Gutter Cleans
- Fascias / Soffits / Gutter Replacement
- Moss Removal & High Pressure Roof Cleans
- Loft Boarding/ Storage Solutions



Customer Review:  
"Very Professional. Kept us updated on  
progress. Respected my property. Good  
Price. Helpful"



## COFFEE+ CAKE + COMMUNITY

**WHEN**

**FIRST FRIDAY OF  
THE MONTH**

**10.30 - midday or anything in between  
Friday 7th March**

**WHERE**

**Thornhaugh Church**

**COST**

**£3**

**FEATURING** • Cafetière coffee and  
delicious cakes.

In future we aim to have crafts, puzzles  
and games if there is interest.

**EVERYONE  
WELCOME**

**AT THE DOOR**  
£3 for coffee and  
cake (free for  
bakers!).

**CCC, A SPACE TO  
CATCH UP IN COM-  
MUNITY**

**QUESTIONS OR  
OFFERS TO BAKE**  
nikki@4stonecottage.co.uk

## TALK AND SOCIAL

**EVERYONE  
WELCOME**

**Thornhaugh  
Village Life**

**in the 60s, 70s and 80s.**

**Friday 25th April  
7pm**

**St Andrew's  
Thornhaugh**

This event is proving very popular.

Tickets to be reserved from [Jdtailby@aol.com](mailto:Jdtailby@aol.com), to be  
paid for on the night. Reservations recommended as the  
talk is very popular and places are limited.



# Augean Community Fund

## January 2025

The **Augean Community Fund** uses monies provided by Augean under the Landfill Communities Fund.

The company's donations relate to its two landfill operations located at Thornhaugh near Peterborough, and King's Cliffe in Northamptonshire.

Recommendations on all grants from the Fund are made by King's Cliffe Environmental Association (KCEA) and Thornhaugh Environmental Association (TEA).

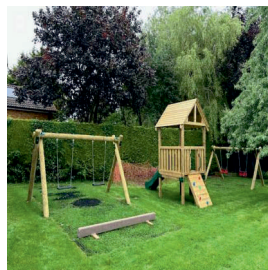
These two committees comprise volunteers from the villages of King's Cliffe, Thornhaugh and nearby, who are best able to represent local community priorities.

### Application Closing Dates

There are usually two funding rounds each year, the next two closing dates are:

**Wednesday 7 May 2025**  
decisions by end July 2025

**Wednesday 12 November 2025**  
decisions by early February 2026



### Who can apply?

Groups with projects that are located within 10 miles of the King's Cliffe landfill site or the Thornhaugh landfill site may apply for grants. Priority will be given to applications received for projects located within 5 miles of Augean's Thornhaugh and King's Cliffe landfill sites.

### What can you apply for?

Grants are available for capital improvement works to public amenity projects. Examples may include:

- Village halls
- Nature reserves
- Village greens
- Community centres
- Public playgrounds
- Cycle paths
- Sports fields
- Sports facilities
- Country parks



You can apply for grants of between £5,000 and £50,000.

Projects must be available and open to the general public as defined by ENTRUST (the Landfill Communities Fund regulator), as a minimum, for 4 evenings a week, or 2 days a week, or 104 days a year.

### Where can you find out more?

For more information about the Fund and how to apply, please visit GrantScape's website.

If you have a project idea that you would like to discuss before you apply, please contact the GrantScape team on:

**Telephone: 01908 247630**

**Email: [info@grantscape.org.uk](mailto:info@grantscape.org.uk)**

**[www.grantscape.org.uk](http://www.grantscape.org.uk)**



# DIRECTORY OF CONTACTS

## For all enquiries, contributions and adverts

<b>Craig Bunday</b>	craig@ascotgraphics.co.uk	07771 538661
<b>Ascot accounts</b>	accounts@ascotgraphics.co.uk	01487 801301

### Parish Councils

Sutton	Deirdre McCumiskey (Clerk)	07565 499346
Wansford	clerk@wansford-pc.gov.uk	
Sibson-cum-Stibbington	Margery Beuttell (Clerk@stibbington.org.uk)	
Thornhaugh	Deirdre McCumiskey (Clerk)	07565 499346
Water Newton (Parish Meeting)	Caroline Nathan (Chairman)	07989 362514

**City Councillor ( Wittering Ward) - Gavin Elsey** **07738930599**

### Churches

<b>Ministers:</b> Thornhaugh & Wansford	01780 782271
Stibbington, Sutton, Castor & Water Newton	01733 380900
<a href="mailto:admin.castor@btconnect.com">admin.castor@btconnect.com</a>	

### Churchwardens:

St Andrew's Thornhaugh:	Stuart Foreman	01780 783220
	Liz Kemp	01780 782333
St Mary's Wansford:	Caroline Ashley	01780 782408
St John the Baptist, Stibbington	Charlotte Bradshaw	01780 781805

### Friends:

St Mary's & St Andrew's	Caroline Ashley	01780 782408
St Remigius Water Newton	Jack Ward	01733 394646

### Other useful contacts

Neighbourhood Policing	101	P'boro City Council	01733 747474
Wansford Surgery	01780 782342	Royal British Legion	01780 782200
(Out of hours	111 option 4)	Stibbington & Wansford WI	. . 781733
Wansford Pharmacy	01780 781616	Cricket Club	07860 278800
Communicare	01780 470437	Horticultural Society	01780 592514
H'don District Council	01480 388388	Stibbington Centre	01780 782386

**Website** **[www.livingvillagesmagazine.co.uk](http://www.livingvillagesmagazine.co.uk)**

©2025 Living Villages Magazine The contents of this magazine may not be copied, reproduced, distributed, republished, downloaded, displayed, posted or transmitted in any form or by any means without the prior written permission of Living Villages Magazine. You may not distribute, display or copy any of the contents of the pages contained in this magazine to third parties without the prior written permission of Living Villages Magazine. All images shown in this magazine are the property of Living Villages Magazine unless otherwise accredited to another. Images may not be used without the prior written permission of Living Villages Magazine or the accredited owner. Unless otherwise specified, the authors of the literary and artistic works in the pages in this magazine have asserted their moral right pursuant to Section 77 of the Copyright Designs and Patents Act 1988 to be identified as the author of those works. If permission is sort and given, it is expected that all articles/images be accredited to either Living Villages Magazine or the author of said articles/images. The views expressed in articles published are strictly those of the writer, and not of Living Villages. Living Villages cannot vouch for products and services advertised, nor accept any liability resulting from the purchasing of products or services, although care is taken to ensure their suitability.



## CHILDREN'S FOOTWEAR FITTING SPECIALISTS

WITH OVER 15  
YEARS OF  
EXPERIENCE  
IN CARING FOR  
CHILDREN'S FEET  
AS THEY GROW



**BRAND NEW SPRING STOCK IN NOW!**

45 Oundle Rd,  
Peterborough PE2 9PB  
[www.zebedeeshoes.com](http://www.zebedeeshoes.com)



# NORTON RICKETT

Local Independent Estate Agents

- Free Market Appraisals
- Probate Valuations (RICS Surveyor)
- Local – Office near Wansford
- Established & Trusted since 2012
- Advertising on Rightmove
- Office Presence in London

# NR

NORTON  RICKETT  
TOWN | COUNTRY | EQUESTRIAN

[www.nortonrickett.co.uk](http://www.nortonrickett.co.uk)

01780 782 999



# Crown

## Property Services

- 👑 Electrical & Plumbing
- 👑 Kitchens & Bathrooms
- 👑 Renovations
- 👑 Extensions
- 👑 Windows & Doors
- 👑 Groundworks
- 👑 Landscaping
- 👑 Internal Refurbishment

Old Sulehay Cottages, Sulehay Road, Wansford. PE8 6PA

**07766 168659**

jonathon@hibbins.me

# Village Pizzas

Open Tue – Sat for  
Collection / Eat-In at  
Leedsgate Farm  
4.30pm – 10pm

Or  
Delivery 6pm till 10pm

**01780  
784587**

View our Menu at  
[www.villagepizzas.co.uk](http://www.villagepizzas.co.uk)



**JUSTINE  
BROMAGE**

Classes for  
all levels

## MAT BASED PILATES

Christie Village Hall (Wansford) or stream live online

**Christie Village Hall  
(studio & online):**

Mon – 16:45 & 18:00  
Tues – 11:00  
Wed – 12:30

**(online only):**

Tues 12:30 &  
16:30 (chair aerobics)  
Thu – 11:30

£4 online / £6 in person



[info@justinebromage.com](mailto:info@justinebromage.com)



**07919106156**

Fully Qualified Level 3 Pilates Instructor  
Level 3 Personal Trainer  
RSA to Music Instructor

**JustineBromage.com**



**Greenwood  
homecare**

## Award-winning home care in Peterborough

- ✓ Personal Care
- ✓ Companionship
- ✓ Complex Care
- ✓ Medication Support
- ✓ Live-In Care



**01733 808531**

[peterborough@greenwoodhomecare.co.uk](mailto:peterborough@greenwoodhomecare.co.uk)  
[www.greenwoodhomecare.co.uk](http://www.greenwoodhomecare.co.uk)