

# *Living Villages*



Images created by Christine Wilson, member of Cambridge Open Studios

*Water Newton Thornhaugh  
Stibbington Sutton Wansford*

*June 2022*



# polished

NAILS & BEAUTY




Award winning nail and beauty professional, providing luxurious treatments from a relaxed setting

**TREATMENTS AVAILABLE**

- Manicures & pedicures
- Gel polish
- Footlogix medi-pedi
- Nail rehabilitation
- Bespoke nail art
- Nail extensions

- Eyelash extensions
- Facial waxing
- Tinting
- LVL (lash lift & tint)
- IBX nail strengthening & repairing




phone 07811 057715

email [hello@polished-nailsandbeauty.co.uk](mailto:hello@polished-nailsandbeauty.co.uk)

website [www.polished-nailsandbeauty.co.uk](http://www.polished-nailsandbeauty.co.uk)

Find us on Facebook [@polishednailsandbeautyuk](https://www.facebook.com/polishednailsandbeautyuk)

THE HAYCOCK MANOR HOTEL, WANSFORD, PETERBOROUGH, PE8 6JA

## New Luxury Care Home



### Castor Lodge Care Home

At Castor Lodge, our care is the kind we would want all of our loved ones to receive. Offering residential and dementia care, our dedicated team make life comfortable and enjoyable for all our residents, allowing them to live safely and as they choose. Our brand new home is luxurious and beautifully furnished, whilst retaining a warm family atmosphere that makes Castor Lodge feel extra special.

- 68 Spacious en-suite bedrooms
- 6 Premium self-contained suites
- Bistro Café and themed pub
- Sociable lounge and dining areas
- Roof terrace and landscaped gardens
- Hair and pamper salon
- Daily fine dining
- Tailored meaningful activities

To find out more about life at Castor Lodge contact our Customer Relations Manager Laura Mills on **07725 799 217** or email [laura.mills@countrycourtcare.com](mailto:laura.mills@countrycourtcare.com)



01733 823163



Splash Lane, Castor, Peterborough, PE5 7BD



[www.countrycourtcare.com](http://www.countrycourtcare.com)

## Editorial

Dear readers

By the time you are reading this, preparations for Platinum Celebrations across the villages will be complete. From page 6 onwards, we bring details of church services over the Jubilee Weekend. Our cover images are supplied from Cambridge Open Studios artist, Christine Wilson, to commemorate The Queen's Landmark.

The regular monthly reports from the various village societies are of course included as is the next meeting of **The Men's Breakfast Club** (P4), and litter picks in Wansford and Thornhaugh, in which we encourage you to get involved - as you'll not only help keep the villages tidy, and make new friends, but also there's promise of cake!

Page 21 details an Open Gardens event in Nassington, plus there's a very interesting article about the Woolsey Charity on p 17, and there will be more about that organisation in the coming months. We also have news of two other local charities - The Underground Centre and The Ann Robson Helpline - on p 24.

A rundown of the events at the 76th **Wansford Show** is on page 18. It is going to be a busy summer!

Best wishes

Craig

### Contents

6	Worship & Benefices
10	Stibbington and Wansford W.I.
14	Parish Council Notices and Minutes
19	Wansford Horticultural & Craft Society
22	Wansford Cricket Club
25	Letters
26	Contacts

---

## Subscription to Living Villages Magazine

If you know someone who has moved away and would like to receive a copy of Living Villages Magazine, we offer a subscription service.

For an annual subscription of **£20** you'll receive a copy in the post every month.

Please fill in the details below and post along with a cheque made payable to Ascot Graphics to:

**Living Villages, Ascot Graphics, 159 New Road, Woodston, Peterborough, Cambs. PE2 9HH**

Name .....your name - (if different to subscriber).....

Address .....  
.....

I enclose a cheque for £20 made payable to Ascot Graphics (Signed .....)

If a BACS payment is preferred, please email [craig@ascotgraphics.co.uk](mailto:craig@ascotgraphics.co.uk)



## WANSFORD COMMUNITY HALL

Peterborough Road, Wansford

This hall accommodates parties of up to 36 people seated. Ideal for Meetings, Workshops, Aerobics etc

GREAT VALUE AT ONLY £4 per hour  
FOR BOOKINGS TELEPHONE  
John Stannage 07879 485330

Capitol Lettours



Your local property agent  
With over 30 years of  
experience  
Relocation, Lettings and Sales

Please call our office for a  
competitive quote

Peterborough - 01733 553366

(enquiries@capitollettours.com)

[www.capitollettours.com](http://www.capitollettours.com)

## BARKLEYS GARDEN SERVICES

Grass cutting, weeding,  
hedge trimming

Lady gardener  
available

Bev & Peter  
Ailsworth  
(01733) 380480  
07593721144

[beverleybarkley1@gmail.com](mailto:beverleybarkley1@gmail.com)



## GRIFFIN

Solid Fuel Merchant  
Supplier of Pre Packs

Coal Bunkers Charcoal Compost  
Flo Gas Logs & Sticks Salt

Coal Yard  
Station Road  
Nassington  
01780 782540

Office  
12 Church Hill  
Castor  
01733 380470



Dry carpet cleaning and upholstery  
cleaning services in Peterborough and  
the surrounding areas.

Whether you have an individual chair or  
carpet in a domestic property, or are  
interested in contract carpet cleaning in  
your business, you can benefit from our  
35 years experience.

Telephone: 01832 280429

Mobile: 07951 124374

Email: [info@bcnmulticlean.co.uk](mailto:info@bcnmulticlean.co.uk)

## WHO LET THE MEN OUT?



A chance for all men from our local villages to meet  
and socialise over a tasty breakfast  
(Apethorpe, Woodnewton, Nassington, Yarwell,  
Wansford and Thornhaugh)

**Saturday 11<sup>th</sup> June**

**8.30am – 10.00am**

The Willow and Brook, Apethorpe, PE8 5DG

Full English breakfast and speaker

RSVP to help cater with approximate numbers or for any  
queries please contact Ian Scott

[mensbreakfast@btconnect.com](mailto:mensbreakfast@btconnect.com)

For more details please see the article in the local village magazines.



# NEED A RECOMMENDATION?

The **ONLY** Police Checked  
recommended register of  
local approved traders



**FREE** and **EASY** service

**safelocaltrades.com**

Recommended & Approved



*Much more than just a recommendation ...*

## Serving the PE Postcode community since 2008

*Over 70 different trade categories and over 16,500 reviews*

Here are some of our members ...

**New Garage Door & Repairs**



**GARAGE DOOR & SHUTTER SERVICES**

[www.garagedoorandshutterservices.co.uk](http://www.garagedoorandshutterservices.co.uk)

Call Dave on

**07709 337647**

**CCTV, Alarms & Security**



[www.ace4cctv.co.uk](http://www.ace4cctv.co.uk)

Call Chris on

**01733 552048**

**Driveways & Patios**



[www.cambridgeshiredriveways.com](http://www.cambridgeshiredriveways.com)

Call us on

**01733 810063**

**Building & Carpentry Services**



**Steve Deprez & Son**

Building • Brickwork • Carpentry

*Restoring Heritage • Building the Future*

[stevedeprezbuilders@gmail.com](mailto:stevedeprezbuilders@gmail.com)

Call Steve on

**07414 292188**

**Painter & Decorator**

**PAUL TEE**  
*A Quality Painter & Decorator*

[www.paulteedecorating.co.uk](http://www.paulteedecorating.co.uk)

Call Paul on

**07980 863414**

**Carpet & Upholstery Cleaning**

**STAINBUSTERS**  
CARPET CLEANERS PETERBOROUGH

[www.peterborough-carpetcleaners.co.uk](http://www.peterborough-carpetcleaners.co.uk)

Call Steve on

**07818 058490**

**Electrician**



[www.jwelectrian.co.uk](http://www.jwelectrian.co.uk)

Call Jamie on

**01733 612339**

**Plumber (Heating & Gas)**



[www.willowservices.co.uk](http://www.willowservices.co.uk)

Call James on

**01733 590501**

**Garden Design & Landscaping**



[www.sbdpaving.co.uk](http://www.sbdpaving.co.uk)

Call Sam on

**07742 246955**

To see our full list of members and read all reviews just go to ...



**www.safelocaltrades.com**



**0800 014 1832**



The safest way to source local traders



**Tear out page and keep**

# WORSHIP DATES

**Every Sunday 5.00pm 'At Home' Service on Zoom. Log in and phone details from Rev. Jane [jdtailby@aol.com](mailto:jdtailby@aol.com) 01780 782271**

***Please note the change of service pattern on 5<sup>th</sup> June***

St. Leonard's, Apethorpe		
5 <sup>th</sup>	11.00 a.m.	Jubilee Thanksgiving Service
19 <sup>th</sup>	11.00 a.m.	Holy Communion

St. Mary's and All Saints, Nassington		
Every Thursday 9.30 a.m. Holy Communion BCP		
5 <sup>th</sup>	8.15 a.m.	Holy Communion BCP
	11.a.m.	Jubilee Thanksgiving Service
12 <sup>th</sup>	9.30 a.m.	Holy Communion
19 <sup>th</sup>	8.15 a.m.	Holy Communion
26 <sup>th</sup>	9.30 a.m.	Family Service with Crafts

St. Andrew's, Thornhaugh		
5 <sup>th</sup>	9.30 a.m.	Jubilee Thanksgiving Service
19 <sup>th</sup>	9.30 a.m.	Holy Communion

St. Mary's, Wansford		
Every Wednesday 10.00 a.m. Morning Prayer		
5 <sup>th</sup>	9.30 a.m.	Jubilee Thanksgiving Service
12 <sup>th</sup>	9.30 a.m.	Holy Communion
26 <sup>th</sup>	9.30 a.m.	Holy Communion

St. Mary's. Woodnewton		
5 <sup>th</sup>	9.30 a.m.	Holy Communion and Jubilee Thanksgiving
19 <sup>th</sup>	9.30 a.m.	Holy Communion
26 <sup>th</sup>	8.30 a.m.	Holy Communion BCP

St. Mary Magdalene's, Yarwell		
12 <sup>th</sup>	11.00 a.m.	Holy Communion
19 <sup>th</sup>	3.00 p.m.	Methodist Service
26 <sup>th</sup>	11.00 a.m.	Holy Communion

## The Friends of St Remigius Water Newton

**STRAWBERRY FAYRE, SUNDAY 10th JULY at 4PM**



Our next service and celebration is our annual 'Strawberry Service' followed by an Afternoon Strawberry Tea - 'All Things Strawberry!'. Come and celebrate summer in the sunshine in the idyllic riverside setting of the Church of St. Remigius, Water Newton.

You can be sure of fun, great company and a truly sumptuous strawberry cream afternoon tea with us by the river - Now that's quintessentially English!.

A small donation of £5 to cover the cost will be requested for your delicious cream tea.

EVERYBODY WELCOME.



## The Friends of St Mary's and St Andrew's

Our Coffee Stops have again proved very popular and after all the festivities of the Jubilee weekend, we look forward to welcoming you to our next Coffee Stop on Wednesday 15th June in St Mary's from 10.30.

**Caroline Ashley**

## REFLECTIONS

June begins with the celebrations for the Queen's Platinum Jubilee and this unique occasion will be marked with celebrations, parties and events

in our villages. When she was crowned, and indeed before that on her 21st birthday, she committed her life to the service of her country and the Commonwealth, and she has fulfilled that promise with dedication and faithfulness, and people have found inspiration in that. This is indeed a day to celebrate.

We will be marking the Jubilee in our churches as well, of course, with services of prayer and thanksgiving, and no doubt some patriotic hymns. Both Thornhaugh and Wansford have special services planned at 9.30 a.m. on Jubilee Sunday, 5th June – an opportunity to come together for a short time to give thanks and reflect, perhaps upon the Queen's example, or what a life of service might mean to you, before we share in the other celebrations of the day.

Not only is the Queen the Head of our nation and the Commonwealth, she is also Head (or "Supreme Governor") of the Church of England. She regularly attends Sunday worship where-ever she is. In the church we rejoice in her example also as a woman of faith, as well as of service and dedication. She has spoken openly about her own faith, particularly in Christmas broadcasts: "For me, the life of Jesus Christ, the prince of peace.... is an inspiration and an anchor in my life." Even those in whom we find inspiration, need sources of inspiration themselves." She has also said, "Jesus Christ lived obscurely for most of his life, and never travelled far. He was maligned and rejected by many, though he had done no wrong. And yet billions of people now follow his teaching and find in him the guiding light for their lives. I am one of them, because Christ's example helps me see the value of doing small things with great love, whoever does them and whatever they themselves believe." and "I know just how much I rely on my own faith to guide me through the good times and the bad."

A guiding light and an anchor – pretty good images of who Jesus can be for us as well as for the Queen. The light is an often-used image of Jesus; indeed, he said "I am the light of the world", but perhaps an anchor takes a little more thinking about. An anchor gives us stability, a sense of security when the storms come. Jesus as our anchor reminds us of his presence with us, supporting us through good times and bad.

As we give thanks for the inspiration found in the life of our Queen, we might also reflect upon those others who inspire us, who are our guiding lights, and those whom we regard as our anchor; those who give us stability and security. Jesus offers us his light, to guide us, and an anchor that will hold firm in all the storms of life. The Jubilee is a great celebration, quite rightly, and then we return to ordinary, everyday life. The bunting might come down and the Union Flags stowed away, but Jesus Christ is always there for us, our light and our anchor.

With every blessing,

*Rev. Jane*



## CASTOR BENEFICE

### Castor Benefice Services

We are still maintaining the following service pattern every Sunday in each of our **Parish churches** until further notice.

**Marholm** 9.00am - Holy Communion  
(Morning Prayer on 4th Sunday)

**Castor** 8.00am Holy Communion  
(said service) 10.15am - Sung Eucharist

**Sutton** 9.00am on 4th Sunday of the month - Holy Communion

Every **Wednesday** morning at **10am** there is a service of Holy Communion at **Castor**.

We still continue to celebrate **Evensong via Zoom at 6pm every Sunday**, if you wish to join us please contact the Benefice office for the Zoom link and access code.  
[admin.castor@btconnect.com](mailto:admin.castor@btconnect.com)

The next service at St. John the Baptist, Stibbington will be to celebrate our Patronal Festival, please see right.

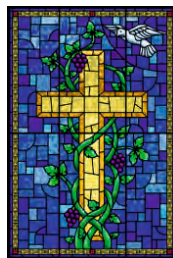
David Ridgeway

**ST. JOHN THE BAPTIST, STIBBINGTON**

**WILL BE CELEBRATING ITS PATRONAL FESTIVAL**

**ON**

**SUNDAY 3rd JULY AT 4pm**



**DO COME AND JOIN US  
YOU WILL BE ASSURED OF A VERY WARM WELCOME**

**REFRESHMENTS WILL BE SERVED AFTER THE SERVICE**

## ST MARY'S CHURCH, WANSFORD

### QUEEN'S PLATINUM JUBILEE CELEBRATION



A Service of Thanksgiving will be held on **Sunday 5th June** at 9.30am, which will include some specially selected items from the Choir.

The Bells will be rung before the Service to invite the local community to join the event.

There will then be the planting of a commemorative tree in the churchyard after which coffee and cake will be served.  
**All are welcome.**





## THE ARTS SOCIETY PETERBOROUGH

The Arts Society (a leading arts education organisation) brings people together through a shared curiosity for the arts. Each year The Arts Society Peterborough (TASP) holds nine illustrated talks on many interesting, informative and entertaining topics. The talks are held at The Fleet in Fletton, Peterborough on the second Thursday of each month (except June, July and August) starting at 10.45am. They are a good way to meet likeminded people, chat with friends over a cup of coffee before the talk commences, and non-members are always welcome to join us.

In addition to the live talks, annual members also receive additional benefits. If you wish to find out more about our Society or about becoming a member, please visit our website for more information: [www.the-arts-society-peterborough.org.uk](http://www.the-arts-society-peterborough.org.uk). This year's varied programme of talks includes The Koh-i-noor Diamond; Why Morocco got painted Blue; 20<sup>th</sup> Century Sculpture; The Fascination of Jewellery, and Is Christmas in Good Taste? More details about each of these talks can be found on our website. Our next two talks are described below:

### 8th September 2022

#### **Morocco Blues - Why and how Morocco got painted blue by Elizabeth Gowing.**

The stories behind the blue pigment used for the fishing boats and doorways of photogenic Essaouira on the Moroccan coast.

### 13th October 2022

#### **Constantin Brancusi and 20th Century Sculpture by David Worthington.**

How the son of a peasant from rural Rumania became an internationally famous artist and one of the most important sculptures of the 20th Century.

## PIANO LESSONS IN PETERBOROUGH

**Ann Burden ALCM PGCert BSC(Hons)**

**Please contact [annburden684@msn.com](mailto:annburden684@msn.com) or ring 07702363337**

### **QUALIFIED EXPERIENCED TEACHER**

No experience is necessary. I can teach you to play for pleasure or towards an exam; I currently work for the London College of Music. Lessons are tailored to your requirements.

If you would like to take up a new hobby or rekindle an old one I would love to hear from you. I am happy to take children from the age of three upwards and there is no age ceiling.

I teach a wide range of instruments primarily piano, keyboard, guitar, violin, clarinet and saxophone. Other instruments are also available so please feel free to contact me with requests. I also teach music theory.

**\*\*Online classes also available\*\***



## STIBBINGTON & WANSFORD WI



### Today's women working for tomorrow's world

Many may see the W.I. as a social organisation, and although that is an important aspect, providing friendship and the chance to network with other women, that is not all. There are two other components to the ethos of the organisation, to provide ongoing education for women and to campaign on the behalf of women to improve their lives.

Readers to this magazine will be aware of the active educational elements carried out by the SWWI group, within this monthly article. Our monthly speakers not only entertain but also allow us to learn new skills, knowledge and understanding, as well as inspire women to find out more, or to challenge themselves. This is continued through our offshoot clubs. The 3C's where crafting expertise is shared, and for those that have a love of reading, the bimonthly book club.

The third core aspect of the WI, and one which is not so obviously on show to outsiders, is the campaigning work carried out by the organisation, from grassroots to national level, giving women within the WI a voice that has the aim to empower women both now and in future generations, hence the banner 'Today's women working for tomorrow's world'. From equal pay to climate change, mental health and violence against women, over the past 100 years, the membership nationwide has embraced a diverse set of challenges.

This is a democratic and member-led organisation, with each new campaign stemming from a resolution being put forward by members and adopted at the Annual meeting. Therefore, WI members have the unique opportunity to turn a concern into a national campaign which is backed by the whole of the WI. As you can imagine, to allow input by everyone this is not a short process. It starts by individuals, WIs or federations submitting resolutions about current issues they are concerned about the national body. These are then discussed and debated to produce a shortlist, which is then sent to all the groups within UK, where grassroot discussions take place. Each member casts their selection for the resolution they support the most. The resolution that has the most member votes, is discussed again both at national and group level, allowing each WI groups to determine how they wish their delegate to vote at the annual meeting. If a resolution is adopted, it will go on the form the basis of a WI campaign.

This was the theme for our May meeting - the resolution supper, where we discussed the resolution 'Women and girls with ASD and ADHD under-identified, under-diagnosed misdiagnosed and under-supported'. Marie Lewis took us through the background of these lifelong disorders and the effects that they can have on the lives of young people. Although historically, both ASD and ADHD have been recognised as mainly affecting men and boys, recent studies have shown that both disorders affect girls and women. Girls have a tendency to show the disorders later in life and they will have behaviours that hide or camouflage these disorders, resulting in diagnosis commonly not taking place before the girl is 10 years old. This later diagnosis means that support during early years education is missed.

A group we voted to support this resolution, we felt that WI nationally via the public affairs departments, could be involved with specialist organisations that provide expert advice or support, increasing awareness to the wider community. WI could lobby public health bodies and Health ministers to improve the process of diagnosis and after support through education. As this resolution moves forward we will look with interest as to how this is turned into real improvements for women and girls with these disorders.

Now that we are meeting in St Mary's Church visitors are most welcome to our monthly meetings to hear our visiting speakers. Please see below for our upcoming events

#### Future events:

Tuesday 14th June , 7pm W.I. meeting St Mary's Church – Jubilee social

Tuesday 7th June, 2-4pm Coffee & Craft club, at St Mary's Church.

Tuesday 21st June, 2-4pm Coffee & Craft club, at St Mary's Church.

Thursday 28th July, 7.30pm Book Club meeting, at The Cross Keys Wansford

Both the Coffee & Craft club, and Book Club are open, not just for WI members only, and we look forward to others joining us.

Rhona Punter

01780 592514



## PAWS AND CLAWS



### Boarding Cattery

*"Cats have a 'tail' to tell when they've 'paws'd' awhile at Wansford's 5 Star Parr Palace"*

Tel 01780 782174

e-mail

[pawsandclaws@hotmail.com](mailto:pawsandclaws@hotmail.com)

Working with Peterborough Cat Rescue to rehome cats and kittens seeking loving homes and laps on which to purr

Peterborough City Council & Rutland County Council  
Licence Number: 078015

## FOOTPATHS

If walking the local footpaths is something you like to do would you be interested in joining like minded people to help monitor our local rights of way? If interested, please drop me a line [linfree52@icloud.com](mailto:linfree52@icloud.com) or 07876341514 and I can explain in more detail.  
Thanks in advance

## THE SPECIALISTS IN PODIATRIC MEDICINE



For Orthotics that really do their job



## YOUR SMART START TO 2022



Using connected insoles, PODO Smart collects over 10 biomechanical parameters allowing a full accurate and objective analysis of your gait - resulting in orthotics which are more comfortable and effective

Take advantage of our limited introductory offer of a Biomechanical Assessment for just £99

From 31 Mar 22, price reverts to £149.

Sue Arnold BSc(Hons) MCPod & Associates

19 Elton Road, Wansford PE8 6JD

Tel: 01780 783982

[wansfordinstep@gmail.com](mailto:wansfordinstep@gmail.com)

Open Monday - Friday





## Your trusted advisers

We provide individuals and businesses with a full range of accounting, audit, corporate and personal tax planning services.

- Audit and Accountancy
- Business Acquisitions and Disposals
- Business Plans and Projections
- Corporate and Personal Taxation
- Grant Funding
- MT Cloud Accounting
- Payroll, Bookkeeping and VAT
- Tax Planning and Mitigation

For more information,  
please contact us:

 **01733 560160**  
[moorethompson.co.uk](http://moorethompson.co.uk)

Peterborough | Spalding | Wisbech | Market Deeping



Moore Thompson is registered to carry on audit work in the UK  
by the Institute of Chartered Accountants in England and Wales.



# OVER 50 YEARS EXPERIENCE

Car buying as it should be; simplistic, with no admin fees, no pressure and a wealth of knowledge to help you find your dream car.

**Great part exchange prices given**

**Finance from as low as 6.9%**

**[www.heartysofpeterborough.co.uk](http://www.heartysofpeterborough.co.uk)**

**01733 560605**

**[sales@heartysofpeterborough.co.uk](mailto:sales@heartysofpeterborough.co.uk)**



**HEARTYS**  
*of Peterborough*



## WANSFORD PARISH COUNCIL



Wansford Parish Council met on the 9th of May and welcomed Tim Pearson who has stepped down as a Councillor after 20 years' service, some years of which were as Chairman of the Parish Council. Tim was thanked by the Council for all his work who hoped to see him attend its meetings occasionally in the future as a member of the public.

Items discussed were the junction of Old Leicester Road and the A47, including the state of the road surface which is breaking up between the Western roundabout and the junction, this has been reported several times but not completed satisfactorily.

The vehicle activated speed sign has been moved in the village back to the Old North Road so we can give traffic figures to Highways England which seem to disagree with their own data.

We are trying to get traffic routing changed for Kings Cliffe Industrial Estate to try to stop the big lorries coming through the village. One option seems to be to extend the 30mph limit up to Paws and Claws and then see if we can enable a 7.5 ton weight restriction on the Old Leicester Road.

The new website [www.wansford-pc.gov.uk](http://www.wansford-pc.gov.uk) is now up and running and seems to be excellent. There is a lot of information there including the history of Wansford which is well worth looking at.

There is still work to be done on the telephone kiosk and we are hoping to replace at least one of the plastic rubbish bins in the village with a wooden bin.

The Parish Council has funded the new LED lighting of St Mary's church and a parishioner had since kindly offered to fit the new LED lights free of labour charges with a materials cost of £455 (inclusive of VAT).

The planning problem with Seeds Field is that Peterborough City Council failed to determine an application within the relevant statutory timescale so the owners, Kelland Developments, have submitted an appeal. The Parish Council expect this to be refused but if the Planning Inspector is minded to accept the Appeal it should not be just outline planning permission but should tie down to exactly what is required so it can't be changed later on adding houses and moving nearer to existing houses, and also to determine what will happen to remaining land.

There was a discussion about traffic crossing Wansford Bridge when the A1 is closed and we are hoping that it isn't closed in future it is just down to one lane to reduce this problem.

There is a wildflower meadow started in Nene Close but unfortunately Aragon, the contractor, has mowed so it needs starting again.

The wooden fence put up opposite the church is deemed to be against planning regulations and needs work done to bring it into an acceptable state.

**Councillor Graham Garner**

# SIBSON-CUM-STIBBINGTON PARISH COUNCIL

Sibson-cum-Stibbington Parish Council met at The Christie Hall on Thursday 12th May 2022 – Annual Parish Meeting, Annual Parish Council Meeting followed by Normal Parish Council Meeting.

4 Councillors were in attendance and 8 members of the public were also present. Apologies received from Cllr M Bradshaw. Cllr Beuttell welcomed everyone to the meeting.

Cllr Beuttell gave her annual report –

Good Evening. During this past most difficult year with the Pandemic causing the PC to meet virtually, we are all relieved that we can now meet face to face with our Residents who attend our meeting.

We have had several planning applications, in fact 23, within the village. Some have been approved and some are pending. It is always good to remember that the Parish Council only comments on any application and it is HDC that give the final approval/refusal.

There has been a very contentious application by Newlands to erect Industrial Distribution Units with Ancillary Offices, on land South of Chesterton. Whilst this is not directly near Sibson-cum-Stibbington the traffic chaos that this could cause when the A605 is over utilised with HGV's would be immense. This application is still in the early stages but has had many objections from residents of Elton, Chesterton Alwalton and Sibson-cum-Stibbington. I would ask you all to look at the planning application on the HDC website 22/00441/FUL.

The PC successfully applied for an LHI grant to provide Double Yellow lines along Old North Road Stibbington, in an attempt to reduce dramatically the HGV's parking along that road, and causing disruption and chaos to our residents who reside there. The ongoing battle with HDC planning regarding the Pure Fuels is going to appeal and we as a PC and I as a DC fully support all opposition to the production of flammable fuel on this Site. We also have the backing of our County Councillor Simon Bywater and our MP Shailash Vara.

Finally I hope that as many residents as possible will attend our Celebration Tea Party to celebrate our Queen's 70 years of service to this country. Elton Road will not be closed, but we would welcome residents from all over Sibson-cum-Stibbington, to bring a table chairs and Tea, together with any Jubilee Cakes to this event on Saturday the 4th June.

Once again, I would like to thank my fellow Councillors, who sit here tonight unopposed and duly re-elected to our Parish Council. Also, Wendy, our Parish Clerk.

Annual Accounts for 2021-2022:  
Approval of Annual Governance Statement  
Approve Accounting Statements  
Above forms duly signed.

As this was the first time Cllrs met following the Election all Cllrs who were present were required to sign their Declaration of Office and complete and sign DPI forms which will be forwarded to HDC.

The Annual Parish Council Meeting followed – where the Chairman Marge Beuttell, and Vice Chairman Mike Bradshaw, were duly elected, and other Officers/Representatives elected. Ed Engel was also co-opted onto the Parish Council to fill the vacancy left after the election.

Normal Parish Council Meeting - Cllr Beuttell was able to give residents an update on Yellow Lines (Nene Valley Railway) no parking!

Report of Dog mess near Sewerage Works – getting worse, Cllr Beuttell will arrange for some

signs to be placed in the area, which inform Dog Walkers that there is £1000 fine if owners caught allowing dog fouling to take place and not removed immediately.

It was observed that Stibbington Café used to be open 24 hours – understand change now closing at 9pm, therefore overnight truckers will not be able to access toilet facilities. It was pointed out that as the Café charges for overnight parking they should have an obligation to provide facilities! The Café will be contacted regarding this, as there is an increase in faeces and bottles of urine being thrown on to the verges, which is totally unacceptable. Environmental health will be made aware.

Request to address the possible closing of the first entrance into Stibbington Village, which is currently closed for rebuilding of the wall made permanent. Cllr Beuttell will enquire, but it is thought better signage may prevent HGV's from entering the village from that access off the A!

Understand Cycle West have lodged an appeal following their application being turned down. PC have reiterated our objection to this.

**Date of next meeting** – Election takes place on Thursday 5th May so next meetings scheduled for Thursday 7th July 2022 in the Christie Hall commencing at 7 p.m.

## THORNHAUGH PARISH COUNCIL

### **THORNHAUGH PARISH COUNCIL** **ANNUAL GENERAL MEETING AND ANNUAL PARISHIONERS MEETING**

The AGM and APM are currently scheduled to take place on 16<sup>th</sup> May 2022, however these will now take place at 7pm on 18<sup>th</sup> July in St Andrews Church, Thornhaugh. Please accept this document as formal Notice of the change of date.

The postponement has been triggered by the current election process for Parish Councillors. Applications for Parish Council had to be with Peterborough City Council by 5<sup>th</sup> April and unfortunately only two applications were received for Thornhaugh by the deadline. The upshot is the two people who applied will be elected uncontested but will not form a quorum and therefore cannot be classed as a decision-making body. After the formal election process finishes on 5<sup>th</sup> May the City Council will do a second round of election/co-option to fill the empty spaces on the Council.

Please be assured that the current Council Members will ensure that there is "business as normal" until 5<sup>th</sup> May, after which there will be a short break in business, with the two newly elected Councillors keeping a watching brief until such time as the Council is back up to full complement, or at least has a minimum of three Councillors to return it to a decision-making body.

If you are interested in becoming part of the Thornhaugh Parish Council, please contact any of the current Councillors or Deirdre McCumiskey (the Clerk to the Parish Council) for more information.

CHRISTINE SMITH  
Chair, Thornhaugh Parish Council  
14<sup>th</sup> April 2022



## A local charity still supporting Thornhaugh and Wansford after 314 years.

IT ALL STARTED WHEN Thomas Woolsey, Rector of Thornhaugh with Wansford from 1672 to 1708, left money in his will to buy and rent out land to pay for a teacher for 4 poor children from the Parish. The next Rector, Benjamin Rudge (from 1708 to 1741), did the same. The land purchased by the new Charity was in Maxey and Newborough Fen. It is now one of the oldest charities in the country.

There was provision for the poor, in addition to the education side of the Charity, with £1 (equivalent to £250 today) to be given annually to the Widows of Thornhaugh. For over 125 years, children were taught in Church House, Wansford, opposite St Mary's Church. Little further is known until the 'school' closed following the Elementary Education Act of 1870. This laid down that all children (aged 5 to 12 years) should have an elementary education. Accordingly, The Soke of Peterborough (the local authority) built several new schools, including Thornhaugh School (which closed just over 100 years later, in 1977).

No longer needing to pay for children to be educated, a Governing Scheme was sealed in 1877 by The Charity Commission. It required the income "to be applied to assist the poor and for the education and advancement of poorer children" including giving prizes for attendance; funding evening classes and equipment; facilitating military drill and scholarships; encouraging promising students to become Pupil Teachers; and assisting apprenticeships. Records of attendance, test results, the number of widows and the Charity paying for such items as 'plimsolls' (aka trainers) and a wireless (aka radio) for the school are still held in St Andrew's Church.

Following sale of the land in 1973, the proceeds were used to purchase shares in the Charity Commission Investment Fund and in 2000 the rules and objectives of the Charity were updated and agreed with the Commission. These now govern the annual distribution of grants by its 5 Trustees.

In accordance with the wishes of the 2 founders, grants by the Woolsey Charity canonically (except in exceptional cases) benefit persons living within the boundaries of the Church Parish of Thornhaugh and Wansford.

Applications for grants are not means-tested and are invited before 1 September each year from those living in the Parish and studying (or about to start) further education for a qualification or apprenticeship; voluntary groups already active (or about to set-up) in the area; and those in need of one-off financial help.

Modest Grants are awarded to assist with expenses such as the purchase of equipment, books, fees, course materials, sports/workwear, travel etc.

For more details visit [www.thewoolseycharity.co.uk](http://www.thewoolseycharity.co.uk), or contact Stuart Foreman, Trustee, on [foreman2004@hotmail.co.uk](mailto:foreman2004@hotmail.co.uk)



**Thornhaugh Rectory, Built mid-17th Century, Probably occupied by Thomas Woolsey. A private residence since 1948.**

## *The Wansford Show - 27<sup>th</sup> August 2022*

Wansford Show update – All of the entertainment is now booked – and we expect great value at **Great Value at £4 entry (u16's free)**

- **Traditional Horticulture & Craft Marquee -Prizes for best exhibits**
- **Live Music from Wansford Ukulele Folk & Yarwell & Nassington Britannia Brass Band**
- **Tug of War (North vs South rematch !)**
- **Children's Entertainers (NonStopKids) & Traditional Games/Side Shows**
- **Over 40 stalls selling local craft, food, plants & gifts**
- **Garden Question Time (Burghley Head Gardener & RHS Chelsea judge)**
- **Pop up Forge and Hand's-on pottery wheel**
- **50 Classic Cars & Bikes**
- **Village traditional tea tent and cakes**
- **Haycock Manor Hotel BBQ & Gin Bar**
- **Wansford Cricket Club beer tent**
- **Fenland Hog Roast**
- **Vegetarian Food & Coffee Barista**
- **Famous Wansford Bottle Tombola**
- **Picnic Area/deck chairs**
- **Raffle and cash prize**
- **Free Parking but please walk if you can.**

Thank you to the organisation team for all the hard work. This is a great day to celebrate life in our villages and we would be pleased to hear from volunteers who want to help out for 1-2 hours on the day: particularly car park stewards and ticket sales on the welcome desk. As a volunteer, you get free entry for a family member or friend. Please contact below.

Gary Punter [garypunter@aol.com](mailto:garypunter@aol.com)  
Show Chair

## **PETER RIDDINGTON LANDSCAPING**

We supply and install Patios & Pathways, Decking, Stone Walls and Fencing, We plant Trees, Shrubs Hedges and Flowers, and offer a complete Garden Maintenance and Improvement Service. Garden design service provided

Contact Peter Riddington today for a free quotation

4 LOCKS GREEN, YARWELL, PETERBOROUGH PE8 6PY  
Telephone: 01780 783004 Mobile: 07860 962068  
Email: [peter@peterriddington.co.uk](mailto:peter@peterriddington.co.uk)





## Wansford Horticultural & Craft Society

*Our Events are up and running*

**!! Just under £400 raised for Sue Ryder !!**

Our **Free Seed Swap at Wedgwood Cottage** has come to a conclusion and thanks to all your generosity (seed, seedling and cash donations) we have raised a fantastic amount. Well done to Sue Arnold for organising over so many weeks.

During May, we enjoyed a fabulous lunch and visit to Coton Manor in Northamptonshire. It's marvellous that we have the Garden of the Year (National Garden Scheme) in our area and we certainly enjoyed the sandwiches & cakes served on fine China, the lovely flowers. The sunshine helped.



No.	Date	Event
6	Sat 14 May	Visit to Coton Manor and lunch, 12.30 for 1pm
7	Monday June 13 <sup>th</sup>	Visit to 'Cactus World'
8	30 <sup>th</sup> July (changed date)	Summer Garden Party
9	Sat 27 <sup>th</sup> Aug	The 76 <sup>th</sup> Wansford Show
10	24 <sup>th</sup> & 25 <sup>th</sup> Sep	Grand Weekend Away: RHS Bridgewater visit, Manchester.
11	20 <sup>th</sup> Oct	Interactive Garden Design – Joe Whitehead (Burghley)
12	Nov	Craft Talk
13	Sat 3 <sup>rd</sup> Dec	AGM and Winter Party (dinner)

Our Events schedule is detailed below and can also be seen on the Wansford Parish Council Website. If you want to become a Society member please contact [RhonaPunter@aol.com](mailto:RhonaPunter@aol.com). It costs just £2.50

We have a busy year ahead with friends. Gary Punter [garypunter@aol.com](mailto:garypunter@aol.com)



**Georgina's**  
Curtains & Keepsakes

*Beautiful curtains, blinds and soft furnishings  
designed and created to compliment your  
home.*

*For a free home consultation  
and quote call 07957686595*

[www.georginascurtainsandkeepsakes.com](http://www.georginascurtainsandkeepsakes.com)



## Woodland Timber Products

Fencing, Play Houses, Gates  
Pet Housing, Sheds



01780

783983

Unit 4, Leedsgate Farm Business Park,  
Kings Cliffe Road, Wansford PE8 6NX.  
07748 787360

[woodlandtimber.products@yahoo.com](mailto:woodlandtimber.products@yahoo.com)



**Local Housekeeper / Cleaning Lady**

Long term customer references ✓  
Exceptionally high standards ✓  
DBS registered ✓  
Ofsted registered Nanny / Housekeeper ✓

**Telephone: 07741 468392**

## MOBILE HAIRDRESSING

Ladies & gents hairdresser with over 30 years experience.



If you are housebound, have reduced mobility, no transport or simply prefer the convenience of having your hair done at home, I have daytime appointments available. Fully insured. Competitive prices.

**Please call Tracey on 01780 782467**

## THE CHRISTIE HALL

Elton Road, Wansford  
(registered charity no 1033998)

A well-equipped hall  
with large kitchen and parking.  
**Available for parties, receptions,  
meetings, activity groups  
and most types of private functions**

For more information and details on how to book  
visit our website

**[www.christiehall.co.uk](http://www.christiehall.co.uk)**

**THE CARRIAGE**  
Exclusive Fitness Club

**OPEN NOW**

Join our experts for the best  
personal training sessions  
and group workouts, in a stunning  
& unique environment.

Wittering Grange, Wansford, Peterborough, PE8 8NR  
07508 878121 / 07841 733578  
[www.thecarriagefitness.co.uk](http://www.thecarriagefitness.co.uk)



Registered  
Business



**jc heating**  
SERVICES



Oil boiler servicing and  
repairs, heating controls,  
hot water service and repairs.

Your local heating expert for  
over 15 years.

Jo Childs,  
8 Black Swan Spinney,  
Wansford.

**Mob : 07729036942**



## Nassington Gardens on Show

Hundreds of visitors are expected to descend on Nassington the weekend of 25th and 26th June to wander through this lovely Northamptonshire village and take a look into around 20 gardens expected to be open to visitors.

The event is part of the National Open Gardens initiative. Visitors will be able to draw ideas from a wide spectrum of gardens – from courtyard to new build, from modern through to the Prebendal Manor. The Manor's garden has been featured on BBC2, Radio 4 and in top magazines including Country Life.

Tea, cakes and other refreshments at the church will keep everyone going and over the weekend will also feature some craft stalls, so it promises something for all the family.

Entry is £5 per person each day for all adults over 16 years of age, and the proceeds will go to support St Mary's Church, Nassington – itself expected to attract many visitors over the weekend. The gardens will be open from 1pm to 5pm each day and special car parking provision has been arranged.

Gardeners in the village are already working hard on their gardens and the Village will soon be laying out the chairs, putting up its parasols and throwing open its gardens. Organiser Hilary Hardie said "We last opened our gardens in 2019 when we had an amazing turnout. There will be a garden tour guide and visitors are bound to go home with ideas for their own gardens".

For more information contact

**Paul Tate:**

[paul.tate53@hotmail.co.uk](mailto:paul.tate53@hotmail.co.uk)

07432 833519

or

**Hilary Hardie:**

[hilary.hardie@btinternet.com](mailto:hilary.hardie@btinternet.com)



## Litter picks in Wansford and Stibbington

Litter picking events in Thornhaugh and Wansford continue to give people the opportunity to get out and enjoy some fresh air while improving our villages – equipment is provided, insurance covers us, and the pickup of litter from a central point is organised for you. These are informal groups often with new faces; next dates are:

**Saturday 18th June** – Thornhaugh, meet at Thornhaugh Village Green, 10.30am

Equipment provided, pick for half an hour or all morning. Please wear suitable footwear and high viz if you have it!. Contact Nikki Higgins [nikki@4stonecottage.co.uk](mailto:nikki@4stonecottage.co.uk)

**Sunday 26th June** – Litter and cake!! Picking in Wansford and Thornhaugh. Wansford folk meet at 10am for an hour's pick, followed by coffee and cake in our back garden (weather permitting!) at 7, Old North Road PE8 6LB. Contact is Jane Hunt, 07787517511 or [jane-hunt@hotmail.co.uk](mailto:jane-hunt@hotmail.co.uk)

## Wansford in England CC Fixtures 2022



Date	Opponents	Venue	Result/ Time
Sunday 5/06/22	Hampton CC	Away	1pm
Sunday 12/06/22	Howitzers	Away	1pm
Sunday 19/06/22	Ashpat XI	Tbc	1pm
Sunday 26/06/22	Orton Park	Home	1pm
Sunday 3/07/22	Rushden	Away	12.30

### T20 Games

Tuesday 7/6/22	Hampton	TBC	17:30
Tuesday 14/6/22	CAMRA tbc	Home	17:30
Tuesday 21/6/22	Holme CC	Home	17:30
Tuesday 28/6/22	Ufford	Home	17:30
Tuesday 5/7/22	Ashpat XI	Home	17:30

The first Sunday match of May saw us face Holme at home, Wansford posted 206 for 4 from their 40 overs, (Darren Sweary 69, Matt Mitchell 46 not out), Holme replied strongly with their opener Ian Kendall out for a rapid 48, the other Holme batsmen put Wansford under pressure but slowly fell to some excellent bowling and fielding from Wansford (Steve Taylor 2 for 14, Ella Briault 2 for 23, Harry Sorensen 2 for 32) bringing the game to an exciting end when the last Holme wicket fell with the scores level, Holme ended 206 all out - Match drawn!

Wansford got their revenge over Holme 2 days later in a midweek T20 posting 149 for 4 from their 20 overs (Sam Wood 30 not out, Steve Taylor 30 not out), Holme narrowly missed out on the run chase getting to 145 for 3 from their 20 overs.

Sunday 8th May Wansford came up against a strong Motley Crew side, electing to bat first, they struggled to 121 all out from 35.3 overs (Pete Lucas and Darren Sweary both top scoring with 30), Motley Crew managed to reach the target from 15 overs for the loss of only 2 wickets.

The Tuesday T20 saw Wansford up against The Thirds CC, winning the toss and electing to bat, they posted a strong 177 for 1 from their 20 overs, with 5 batsmen retiring on 25 (Sam Wood, Harry Sorensen, Haroon Rehman, A Mashood and skipper Kelst Brace), again some excellent bowling and fielding from Wansford saw them secure another win, restricting The Thirds to 158 for 9 from their 20 overs (Kelsey Brace 3 for 29, A Mashood 2 for 8).

Sunday 15th May against Market Deeping was abandoned due to rain.

Please see above for June's fixtures. With plenty of home matches in July on both Sundays and Tuesdays, if you would like to play or watch, please come down to one of the matches or contact Matt Mitchell on 07947 136134, we often practice using our nets on a Thursday evening too, kit is available to borrow if you want to give it a try.

For any enquiries about playing or watching contact Matt Mitchell on 07947 136134



## St Georges Day -It's OK to Celebrate

In a time when the world seems awash with celebratory days for almost anything you can think of, it's important to remember some of the more traditional dates in the diary. Sadly and inexplicably the BBC once again managed to ignore 23rd April 'St Georges Day' with only one reference connected to the date being made by the breakfast presenter who managed instead to wish his Dad a happy birthday!

Not to be deterred from celebrating our national day, Wansford once again stepped up to the plate with over 30 proud Englishmen dressing for the occasion and attending dinners at the George in Stamford and the Haycock in Wansford, many of course sporting a red rose in their lapel. A number of those at the George clocked up 17 years of regular attendance, a milestone indeed.

So why is our day ignored by so many whilst so many others seem to be acknowledged? There are those who feel the flag of St George has become political and represents extreme factions and should therefore be side lined. Try telling that to a proud Englishman who wants no more than to celebrate his country in the same way that the others in the United Kingdom celebrate theirs!

Well done to those who remain undeterred and continue to enjoy our national day - who knows it may one day be designated a Bank Holiday and that would surely be a reason to rejoice.

Jim Boulton



### HOW WE ARE DIFFERENT?

	Confirm your budget	Explain the house buying process	Find the perfect house	Save you as much money as possible	Search the whole market for the right mortgage	Deal with solicitors paperwork	Take care of all your protection needs	Be there every step of the way
US	✓	✓	✓	✓	✓	✓	✓	✓
OTHERS	✓	✓	✗	✗	✗	✗	✗	✗

**EARN £50**

**REFER A FRIEND:**  
Every time you refer friends or family to see us, benefit from our £50 'Refer a Friend' scheme when they complete!

\*Terms & conditions apply.

Our team are happy to help

KATE LAURA HAYLEY

## THERE FOR YOU EVERY STEP OF THE WAY

01205 631330 [kate@homemortgagesolutions.uk](mailto:kate@homemortgagesolutions.uk) [www.homemortgagesolutions.uk](http://www.homemortgagesolutions.uk)

\*Your home may be repossessed if you do not keep up repayments on your mortgage

The Underground Centre is a local charity which provides a range of services to children and young people mainly out-of-school clubs and parent and toddler groups. Established in 2009 our base is the lower ground floor of the Memorial Hall in Kings Cliffe - hence 'the Underground'.

After the interruption of Covid, and then a flood of the Underground Centre back in December we are finally back up and running and delivering weekly sessions:

**TIDDLERS** Stay and Play on term time Monday's 9.30am – 11.00am. Suitable for birth to 5-year olds this is £3 per family and includes refreshments, including biscuits and fruit for adults and children.

**MESSY PLAY** and craft for children aged 5 years and younger every Thursday during term time from 9.30am – 11.00pm. £3.50 for the eldest child, £2.50 for a sibling includes refreshments for adults and children (including biscuits and fruit). We also have Messy Play at Warmington on Tuesday's 10.00am – 11.30am.



We are planning to restart the Youth Club and Friday night drop in, but in the meantime are: **in the process** of arranging with Kings Cliffe Active two Graffiti Workshops for Secondary School aged children – as part of their 'The Jubilee Murals – Our Queen, Our Community, Our Art' project with the grant from the Arts Council Let's Create Jubilee Fund, by Northamptonshire Community Foundation

**And our Summer Camp** starting 22nd August and 30th August which is for Primary School aged children.

Please watch out for booking details which are shared on our Facebook page 'Underground Centre'.

These regular activities are supported by a range of participatory fundraising events – around Easter, Halloween and Christmas – but our next one our annual Duck Race on Maltings Green, on Sunday 3rd July from 2.00pm – 6.00pm. Which in addition to getting the ducks back on the water for the first time in 2 years will include a range of activities for children and adults including bouncy castle, barbeque and bar.



**Introducing the Anne Robson Helpline - if you or someone close to you is dying, you can talk to us.**

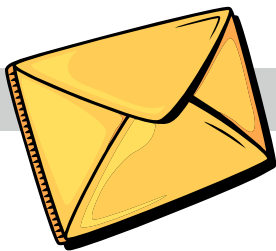
At the Anne Robson Trust we aim to be there to listen to anyone who faces dying or the imminent death of someone they care about. We know that facing the end of life can leave you feeling isolated and alone.

Being able to access support is so important. Gaining knowledge of what may happen towards the end of life and being prepared helps both the person dying and their loved ones to feel a sense of control.

Calls are free and confidential. **Call us on 0808 801 0688 - we have time to talk**

Please visit [www.annerobsontrust.org.uk/helpline-service](http://www.annerobsontrust.org.uk/helpline-service) to find out more.





## LETTERS TO THE EDITOR

email [craig@ascotgraphics.co.uk](mailto:craig@ascotgraphics.co.uk)

Dear Craig

### Dog Fouling Around the Village

Once again and no doubt to the amusement of many I find it necessary to report ongoing issues of dog fouling around the village! Of particular note are the numerous cases that continue on the cricket field at the back of the Haycock.

As a dog owner of some 25 years I accept that it is my responsibility to clear up after my animal. I walk it and see it go through it's motions so it is not difficult to know where and when to pick up any fouling. There are several bins placed around the village so it is very easy to bag it and bin it.

To those of you who think it is ok to let you dog foul without picking up after it, you know who you are and should be ashamed of yourselves. The village if full of children, walkers and sportsman who should not have to dodge the numerous large parcels when enjoying our beautiful footpaths and green spaces. Our village is for the benefit of all and people should take responsibility for their actions.

Good luck to Wansford Cricket Club for a great season and lets hope the wicket stays clean and tidy this year.

Jim Boulton-Wansford Cricket Club



# Just ask

Making the right decisions can be stressful at the best of times, but we are here to help. Whatever's on your mind, just ask.

**TOBIAS COLTON** (BA)(Hons) DipPFS  
Principal  
**TOBIAS COLTON WEALTH MANAGEMENT**  
Associate Partner Practice of St. James's Place Wealth Management  
07468 428 380  
[tobias.colton@sjpp.co.uk](mailto:tobias.colton@sjpp.co.uk)  
[www.tobiascoltonwealthmanagement.co.uk](http://www.tobiascoltonwealthmanagement.co.uk)  
 



  
**ST. JAMES'S PLACE**  
WEALTH MANAGEMENT

The Partner Practice is an Appointed Representative of and represents only St. James's Place Wealth Management plc (which is authorised and regulated by the Financial Conduct Authority) for the purpose of advising solely on the group's wealth management products and services, more details of which are set out on the group's website [www.sjp.co.uk/products](http://www.sjp.co.uk/products). The 'St. James's Place Partnership' and the titles 'Partner' and 'Partner Practice' are marketing terms used to describe St. James's Place representatives.

SJP12026 V1 (04/20)

# DIRECTORY OF CONTACTS

## For all enquiries, contributions and adverts

<b>Craig Bunday</b>	craig@ascotgraphics.co.uk	07771 538661
<b>Ascot accounts</b>	accounts@ascotgraphics.co.uk	01487 801301

## Parish Councils

Sutton	Deirdre McCumiskey (Clerk)	01780 782668
Wansford	Marie Lewis (Clerk)	07899 732049
Sibson-cum-Stibbington	Wendy Gray (Clerk)	01778 441312
Thornhaugh	Deirdre McCumiskey (Clerk)	01780 782668
Water Newton (Parish Meeting)	Caroline Nathan (Chairman)	07989 362514

**City Councillor ( Wittering Ward) - Gavin Elsey** **07738930599**

## Churches

<b>Ministers:</b> Thornhaugh & Wansford	01780 782271
Stibbington, Sutton, Castor & Water Newton	01733 380900
<a href="mailto:admin.castor@btconnect.com">admin.castor@btconnect.com</a>	

## Churchwardens:

St Andrew's Thornhaugh:	Stuart Foreman	01780 783220
	Liz Kemp	01780 782333
St Mary's Wansford:	Caroline Ashley	01780 782408
	Alan Jones	01780 783205

## Friends:

St Mary's & St Andrew's	Caroline Ashley	01780 782408
St Remigius Water Newton	Tony Capon	01733 237500

## Other useful contacts

Neighbourhood Policing	101	P'boro City Council	01733 747474
Wansford Surgery	01780 782342	Royal British Legion	01780 782200
(Out of hours	111 option 4)	Stibbington & Wansford WI .	781733
Wansford Pharmacy	01780 781616	Cricket Club	07860 278800
Communicare	01780 470437	Horticultural Society	01780 592514
H'don District Council	01480 388388	Stibbington Centre	01780 782386

**Website** [www.livingvillagesmagazine.co.uk](http://www.livingvillagesmagazine.co.uk)

©2022 Living Villages Magazine The contents of this magazine may not be copied, reproduced, distributed, republished, downloaded, displayed, posted or transmitted in any form or by any means without the prior written permission of Living Villages Magazine. You may not distribute, display or copy any of the contents of the pages contained in this magazine to third parties without the prior written permission of Living Villages Magazine. All images shown in this magazine are the property of Living Villages Magazine unless otherwise accredited to another. Images may not be used without the prior written permission of Living Villages Magazine or the accredited owner. Unless otherwise specified, the authors of the literary and artistic works in the pages in this magazine have asserted their moral right pursuant to Section 77 of the Copyright Designs and Patents Act 1988 to be identified as the author of those works. If permission is sort and given, it is expected that all articles/images be accredited to either Living Villages Magazine or the author of said articles/images. The views expressed in articles published are strictly those of the writer, and not of Living Villages. Living Villages cannot vouch for products and services advertised, nor accept any liability resulting from the purchasing of product or services, although care is taken to ensure their suitability.

## NEED A LOCAL PLUMBER?

**PlumbCall** Plumbing & heating  
Same day / next day service!

- Gas, Electric, Oil, LPG & Solar
- Central heating: Full design & installation
- High efficiency boilers
- Boiler / combi replacements
- Central heating, boiler breakdown & plumbing aftercare
- Underfloor heating specialist
- Power flushing
- Landlord certificates
- Free estimating service
- Annual servicing
- All work guaranteed
- OFTEC Registered

**12 year manufacturer's guarantee on selected boilers**  
(Terms & Conditions apply)

**CALL US TODAY!**

**01733 243 047**

**or 07860 257 803**

E: [advice@plumb-call.co.uk](mailto:advice@plumb-call.co.uk)

W: [www.plumb-call.co.uk](http://www.plumb-call.co.uk)

Gas Safe Register No.8494  
LPG Registered



\*subject to acceptance terms and conditions apply



*“Achieving the best price for our clients is our highest priority”*

- Local
- Professional
- Experienced Estate Agents



[www.nortonrickett.co.uk](http://www.nortonrickett.co.uk)

**01780 782 999**



# Crown

## Property Services

- 👑 Electrical & Plumbing
- 👑 Kitchens & Bathrooms
- 👑 Renovations
- 👑 Extensions
- 👑 Windows & Doors
- 👑 Groundworks
- 👑 Landscaping
- 👑 Internal Refurbishment

Old Sulehay Cottages, Sulehay Road, Wansford, PE8 6PA

### 07766 168659

jonathon@hibbins.me

# Village Pizzas

Open Tue – Sat for  
Collection / Eat-In at  
Leedsgate Farm  
4.30pm – 10pm  
Or

Delivery 6pm till 10pm

## 01780 784587

View our Menu at  
[www.villagepizzas.co.uk](http://www.villagepizzas.co.uk)



### Mat based Pilates and Chairotics

Classes for all levels

## MAT BASED PILATES

1 hr classes

Online on Zoom, or in person at  
Christie Village Hall (Wansford) and Harringworth Village Hall

Monday, Tuesday, Wednesday and Thursday  
£3.50 online / £6 in person



Ease back pain  
Strengthen your core, abs and back  
Improve sports performance  
Exercise without joint pain  
Increase your flexibility  
Boost brain power and focus

**Christie Village Hall:**  
18:00 Monday / 12:30 Wednesday

**Online:**  
16:45 Monday / 11:30 Thursday  
11:00 & 12:30 Tuesday

### Justine

BROMAGE FITNESS

Justine Bromage  
Fully Qualified Level 3 Pilates Instructor  
Level 3 Personal Trainer  
RSA to Music Instructor

For more info: justwhim@hotmail.com / 07919106156

*Experienced Private Tutor and FE College Teacher with  
DBS enhanced certificate offers*

## MATHEMATICS TUITION

(At home or online)

for  
GCSE and A level

contact  
John Barratt DipMath BSc

07939 263091  
[jbmaths@gmail.com](mailto:jbmaths@gmail.com)



## F.Had Roofing & Home Improvements

roofing. building. landscaping

**Specialist in Collyweston Slate Roofs**

### 07712 607821

email: [frankhad0892@gmail.com](mailto:frankhad0892@gmail.com)