

Living Villages

January 2025

*Water Newton Thornhaugh
Stibington Sutton Wansford*

Image taken by John Measures



Call us today to book your
free appointment

Heritage Wills

Peace of mind when you need it most



Will Writing



Client Care
Package



Lasting Power
of Attorney



Agricultural
Property Relief



Trusts



Corporate
Benefit Package



Property
Protection Trusts



Tennants in
Common



Probate Services



Property
Title Change

01480 465855 | heritagewills.co.uk

HLC Business Centre, 5 The Quay, St Ives,
Cambridgeshire, PE27 5AR

Editorial

Dear readers

So it's January 2025 - a new year, a fresh start, a month of resolutions and goals. **The Wansford Medical Practice** and Pharmacy offer articles about a healthier you on pages 10 and 25, and the **Horticulture Society** have a full programme of events listed on page 28. However, we do look back as well as forward as many groups also reflect on the last 12 months.

Speaking of looking back, earlier in the year I was given a collection of old copies of Living Villages by Stuart Foreman, the church warden in Thornhaugh (and along with his wife Diane, distributor of the current Living Villages in the village). Stuart hoped I could find things in them that would be interesting to readers, and as we had some space this month I have added an article on the **Winter Plants at Sulehay**, which featured in the 2007 December issue. It was written by Anne Costello and I hope that you enjoy reading it on pages 19 and 20 and reminiscing.

Elsewhere, amongst the council notices, there's further details on the vacancy for a council clerk in Wansford, and also information on how to be help shape the **Wansford Neighbourhood Trust**, both on page 17.

I am grateful as always to all the distributors, contributors and advertisers who help shape your magazine - it wouldn't be here without you, and as always, if you have contributions for upcoming editions, please get in touch using the contact details on page 30.

Best wishes

Craig

Contents

6	Worship & Benefices
11	Stibbington and Wansford W.I.
16	Parish Council Notices and Minutes
27	Horticulture Society
30	Contacts

HOME
MORTGAGE SOLUTIONS LTD

THERE FOR YOU EVERY STEP OF THE WAY
Whole of Market . Critical Illness. Solicitor Liaison. Total Protection

01205 631330
kate@homemortgagesolutions.uk
www.homemortgagesolutions.uk

*Your home may be repossessed if you do not keep up repayments on your mortgage

Woodland Timber Products
Fencing, Play Houses, Gates
Pet Housing, Sheds

01780 783983

Unit 4, Leedsgate Farm Business Park.
Kings Cliffe Road. Wansford PE8 6NX.
07748 787360
woodlandtimber.products@yahoo.com




WANSFORD COMMUNITY HALL
Peterborough Road, Wansford
This hall accommodates parties of up to 36 people seated. Ideal for Meetings, Workshops, Aerobics etc
GREAT VALUE AT ONLY £8 per hour*
FOR BOOKINGS TELEPHONE
clerk@wansford-pc.gov.uk
*discounts available to residents

Capitol Lettours Your local property agent
With over 30 years of experience
Relocation, Lettings and Sales

Please call our office for a competitive quote
Peterborough - 01733 553366
(enquiries@capitollettors.com)
www.capitollettors.com



BCN MULTICLEAN

Dry carpet cleaning and upholstery cleaning services in Peterborough and the surrounding areas.
Whether you have an individual chair or carpet in a domestic property, or are interested in contract carpet cleaning in your business, you can benefit from our 35 years experience.

Telephone: **01832 280429**
Mobile: **07951 124374**
Email: info@bcnmulticlean.co.uk

OLD STATION YARD NASSINGTON

GRIFFIN FUELS
Quality Smokeless Pre-Packed Fuels
Kiln Dried Wood / Kindling / Bottle Gas
  **01733 380470**  

TAGGFX Signage Solutions
Graphic Design
Vinyl Graphics
07834-906-206
info@tagsigns.co.uk
Est. 2006

COREL DIBOND Roland mactac  3M 

Nassington
Self Storage
www.nassingtonselfstorage.co.uk
Tel: **01780 782540**




NEED A RECOMMENDATION?

The **ONLY** DBS Checked
recommended register of
local approved traders



FREE and EASY service

safelocaltrades.com[®]

★★★★★

Recommended & Approved



Much more than just a recommendation ...

Serving the PE Postcode community since 2008

Over 70 different trade categories and over 18,000 reviews

Here are some of our members ...

New Garage Door & Repairs



**GARAGE DOOR &
SHUTTER SERVICES**

www.garagedoorandshutterservices.co.uk

Call Dave on

07709 337647

Electrician

**OLD COURT
ELECTRICAL**

www.oldcourtelectrical.co.uk

Call David on

07973 507420

**Loft Insulation & Boarding,
Cavity Wall Insulation**



**A TO Z
ENERGY SOLUTIONS**

www.atoz-energy.co.uk

Call Leanne on

07878 314562

Building & Carpentry Services



Steve Deprez & Son
Building • Brickwork • Carpentry

Preserving the past. Building the future.

stevedeprezbuilders@gmail.com

Call Steve on

07414 292188

Gutter Cleaning & Repairs

**THE
GUTTER CLEAN
COMPANY**

www.guttercleancompany.com

Call Jeremy on

0800 179 9363

**Roofing Specialist. Fascias,
Soffits & Guttering**

**Synergy
Roofing**

www.synergypoofing.co.uk

Call Simon on

01733 711721

Kitchens & Bathrooms

APG BATHROOMS

www.apghomeimprovements.co.uk

Call Aaron on

01733 568651

Double Glazing Repairs

**Nene Valley UPVC
REPAIR & MAINTENANCE**

www.nenevalleyupvcrepairs.co.uk

Call Andrew on

01733 576397

In association with ...



**Neighbourhood and
Home Watch**
Looking out for the community

**Cambridgeshire
& Peterborough
ageUK**



**CAMBRIDGESHIRE & PETERBOROUGH
AGAINST SCAMS PARTNERSHIP**

To see our full list of members and read all reviews just go to ...



www.safelocaltrades.com



0800 014 1832



The safest way to source local traders

Tear out page and keep

WORSHIP DATES

Every Sunday 5.00pm - Zoom 'At Home' Service, Log in and phone details from Rev. Jane jdtailby@aol.com 01780 782271
 Every Wednesday: 10.00 a.m. Morning Prayer – Wansford Every Thursday: 9.30 a.m. Holy Communion BCP - Nassington

5th January

8.15 a.m.	Holy Communion BCP	Nassington
9.30 a.m.	Morning Prayer	Nassington
9.30 a.m.	Morning Prayer	Thornhaugh
9.30 am	Holy Communion	Woodnewton
11.00a.m.	Holy Communion	Apethorpe
3.00 p.m.	Christingle	Yarwell

12th January

9.30am	Holy Communion	Nassington
9.30 am	Holy Communion	Wansford
11.00 a.m.	Holy Communion	Yarwell

19th January

9.30 a.m.	Holy Communion	Thornhaugh
9.30 am	Holy Communion	Woodnewton
11.00a.m.	Holy Communion	Apethorpe
3.00 p.m.	Craft Service	Nassington
3.00 p.m.	Methodist Service	Yarwell

26th January

8.30 a.m.	Holy Communion BCP	Woodnewton
9.30 a.m.	Holy Communion	Nassington
9.30 a.m.	Holy Communion	Wansford
11.00 a.m.	Holy Communion	Yarwell

CASTOR BENEFICE

We are still maintaining the following service pattern every Sunday in each of our **Parish churches** until further notice.

Marholm 9.00am - Holy Communion (Morning Prayer on 4th Sunday)

Castor 8.00am Holy Communion (said service) 10.15am - Sung Eucharist

Sutton 9.00am on 4th Sunday of the month - Holy Communion

Every **Wednesday** morning at **10am** there is a service of Holy Communion at **Castor**.

We still continue to celebrate **Evensong via Zoom at 6pm every Sunday**, if you wish to join us please contact the Benefice office for the Zoom link and access code.

admin.castor@btconnect.com

David Ridgeway



Georgina's
Curtains & Keepsakes

Covering all the Villages
Stamford to Stibbington
(and everywhere inbetween!)



Bespoke handmade curtains, roman blinds and soft furnishings to complement your home.
 For a free consultation and quote call 07957 686595
www.georginascurtainsandkeepsakes.com

Happy New Year!

REFLECTIONS


I hope that your Christmas celebrations went well and that there will be joy for you and those you love in 2025. There was so much going on in our churches over Christmas and it is good to begin with a "thank you letter" to all those who worked so hard in so many ways to make sure that our celebrations were so wonderful. Thank you to everyone who shared in our Christmas services in church and provided a warm welcome for regulars and visitors alike.

Of course, I am writing this well before most of those lovely events have actually happened as printing deadlines mean that this goes in before our Christmas festivities. In fact, I have just put up my Christmas lights outside on the trees in front of the vicarage. I love the lights that appear outside our houses as part of our Christmas celebrations, and I know that Nassington has some particularly special examples! As well as our thanks to everyone who takes part in our church activities, I always feel I should be thanking those who put up outdoor lights for others to appreciate. That is the case of course; those of us who pass by when it's dark benefit from the lights as much, if not, more than those who have gone to the trouble of putting them up. Sometimes, when I get back from an evening event, I'll sit in the car for a couple of minutes enjoying the lights in my garden. Daft, I know!

I suppose it's one of our Christmas themes, doing things that others benefit from more than we do. As we begin the new year, I find myself wondering how to continue that giving of joy and hope, and fun, to those around us; a bit like leaving the Christmas lights up all year! Perhaps this new year can be a year of light for us all.

In the Church we have celebrated the coming of Jesus Christ who is the Light of the World. This is not a light that is packed away after the festivities are over, but that shines in the darkness of the world always, into our struggles and anxieties, offering joy and hope. May we know that light on into the year to come, and always.

With every blessing for the new year.
Rev'd. Jane



Men's Breakfast Meeting

An informal bi-monthly social gathering for men from local villages to meet for breakfast and hear from an invited speaker. Interested? Contact mensbreakfast@sulehay.co.uk

New members welcome



1st February 2025

5th April 2025

Queen's Head
Nassington
08:30hrs - 10:00hrs
£15 per head

Paws and Claws



Boarding Cattery

"Cats have a 'tail' to tell when they've 'paws'd' awhile at Wansford's 5 Star Purr Palace"

Tel 01780 782174

e-mail

pawsandclaws@hotmail.com

Working with Peterborough Cat Rescue to rehome cats and kittens seeking loving homes and laps on which to purr

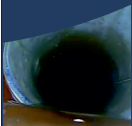
Peterborough City Council & Rutland County Council
Licence Number: 078015



Perfect Drainage Solutions

Your Drainage Experts (est 2023)

Gutter Cleaning
CCTV Drainage
High Pressure Water Jetting
Drain Blockage Clearance
Tanker Service
Repairs



07817723610

info@pdsLtd.co.uk

www.perfectdrainagesolutions.co.uk



Registered
Business




jc heating
SERVICES

Oil boiler servicing and
repairs, heating controls,
hot water service and repairs.

Your local heating expert for
over 15 years.

Jo Childs,

8 Black Swan Spinney,
Wansford.

Mob : 07729036942

THE SPECIALISTS IN HEALTH CARE



Podiatry

Shock Wave Therapy now Available

InStep Foot Clinic is the only Podiatry Clinic within 30 miles to offer this treatment. *Beneficial for relieving pain and restoring function*, particularly: *Plantar Fasciitis, Achilles Tendinopathy, Tennis Elbow, ITBS, Shin Splints, Heel Spurs etc*
Nail Surgery For Ingrown Nails, Biomechanics & Orthotics, Diabetic Foot Care, Verrucae, Corns, Cracked Heels, Calluses, Hard Skin, Nail Reconstruction



Ear Wax Microsuction

Ear Ache? Hearing Loss? Blocked Ears? Pre Hearing Test Clean?
It could just be wax! Safe, Gentle and Effective Ear Wax Removal



CryoAesthetics for Skin Lesions

Skin tags, Age/Liver Spots, Milia, Seborrheic Keratosis, Solar Lentigo, Cherry Angiomas, Verrucae, warts, Popular nevi (moles, birthmarks)

You can self refer to us for immediate treatment

Home Visits Available

Sue Arnold BSc(Hons) MRCPod & Associates

InStep Foot Clinic, 19 Elton Road, Wansford PE8 6JD

Tel: 01780 782200 wansfordinstep@gmail.com

**Now
Accepting
New
Patients!**



Our family, caring for yours

Castor Lodge Care Home

Residential, Dementia
and Respite Care

Our care is the kind we'd all want our loved ones to receive. Castor Lodge is luxurious and beautifully furnished whilst retaining a warm, homely atmosphere.

To book your tour call

01733 731455



Splash Lane,
Castor, Peterborough,
PE5 7BD



The Friends of St Mary's and St Andrew's

Thanks to everyone who came to our festive Coffee Stop on 18th December. Having enjoyed festive bakes and carols, we raised an amazing sum to support Hope in Action.

There will be a January Coffee Stop on **15th in St Mary's church from 10.30**
Happy New Year to all

Caroline Ashley

NEWS FROM WANSFORD PHARMACY

The phrase "New Year, New You" is all about embracing positive changes and focusing on improving your well-being as the year begins.

At Wansford Pharmacy, we take your health seriously and set lifestyle support as a priority. Our team are here to help you start the year positively. With services like Cardiso Cardiac Screening, sleep disorder screening, and the NewWeigh Total Replacement Diet, we provide the tools and support you need to make lasting health improvements.

Cardiso Cardiac Screening, currently only available in the UK at Wansford Pharmacy, offers a thorough non-invasive assessment of your heart health. This service is an excellent way to identify any potential cardiovascular risks early on. By monitoring key heart health markers and detecting conditions such as irregular heart rhythms, the Cardiso screening can help prevent serious issues before they develop. Whether you have a family history of heart disease or want to take proactive steps to ensure your heart remains healthy, our pharmacy team is here to guide you through the process and even offer you free, periodic blood pressure checks.

In addition to heart health, sleep plays a crucial role in overall well-being. If you've been struggling with poor sleep, you might be dealing with a sleep disorder, such as sleep apnea. At Wansford Pharmacy, we offer sleep disorder screening to help identify the causes of your sleep problems. By understanding your sleep patterns, we can provide personalized advice and recommend treatments, and or liaise with your GP to help you get the quality sleep you need. Better sleep leads to improved energy, mood, and cognitive function, which supports your health goals in the New Year.

Finally, managing your weight can have a significant impact on your health. Wansford Pharmacy's NewWeigh Total Replacement Diet offers a simple, effective way to lose weight and maintain a healthier lifestyle. This program provides nutritionally balanced meals designed to replace your regular meals, helping you achieve rapid and sustainable weight loss. With the support of our expert team, the NewWeigh diet helps you make long-term changes that align with your health and fitness goals.

At Wansford Pharmacy, we are dedicated to supporting your journey toward a healthier, happier you in the New Year. Let us help you take the first step with our comprehensive health services tailored to your needs.

STIBBINGTON & WANSFORD WI

Today's women working for tomorrow's world



Our last meeting of 2024, and there could be only one theme for our meeting – we turned to craft. Regular speakers Joan Rose & Julie Chillcott tutored us through making beautiful Christmas stars. We would like to thank all those that have supported us throughout the year, as visitors to our monthly meetings. Those villagers that have become members of our Book club and Coffee & craft club. In addition those villagers that enjoyed the two coffee mornings we ran to raise funds for two charities: Nationally Macmillan, and locally, T-21. The money raised by your purchases and donations have been much appreciated.

Hoping you all have a peaceful and healthy 2025.

Winter is here, so our monthly meeting will take place in Wansford Community Hall, other meetings, please check each individual event. If you wish to attend one of our upcoming meetings to hear one of our visiting speakers, please get in touch. Please see below for our upcoming events:

Tuesday 14th January 2025, 7pm WI meeting,

Tuesday 15th January 2025, 2-4pm Coffee, Cake & Craft club, at Wansford Community Hall

Thursday 30th January 2025 Book Club meeting, at The Cross Keys Wansford,

Both the Coffee & Craft club, and Book Club are open to all, (not just for WI members) and we look forward to others joining us.

Rhona Punter, email - rhonapunter@aol.com

PETER RIDDINGTON LANDSCAPING

We supply and install Patios & Pathways, Decking, Stone Walls and Fencing, We plant Trees, Shrubs Hedges and Flowers, and offer a complete Garden Maintenance and Improvement Service. Garden design service provided
Contact Peter Riddington today for a free quotation

4 LOCKS GREEN, YARWELL, PETERBOROUGH PE8 6PY
Telephone: 01780 783004 Mobile: 07860 962068
Email: peter@peteriddington.co.uk





A Trusted. Affordable. Dedicated Care Solution.

- One to one Care Coordinator for all types of care.
- 12 hours a day/365 days a year contact and backup.
- 1st line of contact removing family burden and worry.
- A one stop bespoke coordinated care solution.
- Thrive at homes/care homes with better outcomes.
- Our work is limitless for our clients.
- Reduced care costs for families and clients.
- Long-term proactive support team.
- Combined experience of 100 years professional service.
- Outstanding results delivered with compassion and expertise.

Contact us today on: info@mycarecoordinator.co.uk

www.mycarecoordinator.co.uk





HEARTYS

of Peterborough

Car buying made
easy with over 30 vehicle
manufacturers on site and
200+ cars in stock

Fantastic part exchange
prices offered with fully
comprehensive warranty on
all purchases

Peace of mind motoring for over 50 years
www.heartysofpeterborough.co.uk

01733 560605
Unit 10 Flaxley Road,
Peterborough, PE2 9FT

BARKLEYS GARDEN SERVICES

Your LOCAL Gardening Team

Regular garden maintenance

Lawn care and mowing

Hedge trimming

Lady gardener available

Get in touch by calling

Bev - 07593 721144

Peter - 07747 502471

beverlybarkley1@gmail.com

MOBILE HAIRDRESSING

Ladies & gents hairdresser with over
30 years experience.



If you are housebound, have reduced
mobility, no transport or simply prefer the
convenience of having your hair done at
home, I have daytime appointments
available. Fully insured. Competitive prices.

Please call Tracey on 01780 782467



Home Care & Support

Living independently at home is something most of us would like to do for as long as possible. However, there are times when we all need a little support with daily living tasks such as personal care and this is where Care Reserve can help.

What are the benefits of Care Reserve home care?

- Help for everyday tasks, social activities or personal care
- You are at the centre of your own care and support at all times
- 24/7 support from a dedicated and highly trained team
- Support from local people, who know your area.

admin@carereserve.co.uk
 Workspace House Peterborough,
 28 - 29 Maxwell Road
 Peterborough PE2 7JE

Tel: 01733 396164; MB 07546251724

Our latest CQC rating:

	Safe	Good
	Effective	Good
	Caring	Good
	Responsive	Good
	Well-led	Good
		

Our Clients



Inspected and rated

Good





Helping people build successful businesses and personal wealth for almost a century

Our services include:

- Audit and Accountancy
- Business Acquisitions and Disposals
- Business Plans and Projections
- Corporate and Personal Taxation
- Grant Funding
- Payroll, Bookkeeping and VAT
- Tax Planning and Mitigation

For more information,
please contact us:

 **01733 560160**
moorethompson.co.uk

Peterborough | Spalding | Wisbech | Market Deeping | Stamford

Moore Thompson is registered to carry on audit work in the UK
by the Institute of Chartered Accountants in England and Wales.

WANSFORD PARISH COUNCIL



Happy New Year to you all!

2024 was a challenging year for Wansford Parish Council, but we soldiered on and continue to do our best to support the interests of the village.

Over the year, people have approached me after decisions have been made to say that either they agree or disagree with what has happened but once an action has been put in place it is often too late to change. I would therefore urge everyone to keep an eye on the agendas to see what is coming up at the meetings. You can express your views through the Public Time, which is at the beginning of every meeting and you can also use this time to raise any other concerns you may have. If you are unable to attend, you can email your thoughts to: clerk@wansford-pc.gov.uk The agendas are always on the notice board ahead of the meetings and on the Parish Council Website: wansford-pc.gov.uk.

Full details of December's meeting can be found in the minutes on the Parish Council Website as above, but some of the main points are set out below.

All Parish Councillors were present, apologies were received from Cllr Gavin Elsey and no members of the public attended.

Following some very expensive quotes from woodworm treatment and insulation companies, it was decided that a couple of councillors would undertake the work themselves. They have written a full scope for the works and hope to rectify this issue in the new year.

Some of the wonderful children from the village supported the WI in the fundraiser for T21, The Birch Tree Café charity and collectively raised nearly £500. Sadly, it has been difficult to get the young people together at a mutually convenient time over the past year. If you have children who would like to be involved in the local community or would like to support a Youth Council, do please get in touch with me.

Issues with the getting the footpath by the picnic site re-opened, the ongoing works on the A47, problems with the A1 and concerns over the safety of the Bridge continue to have a high priority within the Parish. Councillors are in regular communication with the associated agencies and hope to be able to provide more information soon following meetings later this month.

A response has been submitted regarding **Sibson Garden Community** and we will continue to support our neighbouring villages with the challenges they face from large developments being introduced in the local plans. This will affect all of us. Patricia Stuart-Mogg is working hard to develop a neighbourhood plan. This will need the support of the village so please do think about becoming involved. Even if you can only spare a short amount of time, that support could be invaluable.

The next meeting will take place at 7.30pm on Monday 13th January 2025 in the Community Hall.

Jane Taylor-Pitt
Wansford Parish Council

SIBSON-CUM-STIBBINGTON PARISH COUNCIL

The next meeting of the Sibson-cum-Stibbington Parish Council will be on the **9th January, 2025**. A report will appear in a future edition of Living Villages.

THORNHAUGH PARISH COUNCIL

The next Thornhaugh Parish Council Meeting will take place at **7.00 pm on 13th January 2025** in St Andrew's Church, Thornhaugh. A report will appear in a future edition of Living Villages.



PARISH CLERK

Would you like to be the new Parish Clerk for Wansford and make a contribution to the community?

The job takes about 10 hours a week and is paid at approximately £15 per hour. The work is varied but is mostly monitoring emails, writing the agendas and minutes of meetings and keeping track of the Parish Council's finances.

Training is provided but a basic knowledge of word and excel is needed as a starting point.

Interested applicants may send your cv to clerk@wansford-pc.gov.uk

wansford-pc.gov.uk

HELP SHAPE WANSFORD NEIGHBOURHOOD PLAN

By now every Wansford Parish household has had a letter popped through their door introducing the creation of Wansford's Neighbourhood Plan. **You can shape the future of Wansford – by supporting, and helping with the creation of your Wansford Neighbourhood plan.**

Why is a Neighbourhood Plan important for Wansford - A neighbourhood plan can help inform Peterborough City Council's Local Plan and how you want your neighbourhood to develop.

The Neighbourhood Plan is developed by, for and approved by Wansford residents. So, your participation and help is vital. Help and advice is already progressing with other villages who have already created their neighbourhood plans.

Do you have any or some of them that you are willing to share?

- Local knowledge
- Skills Local Government experience, especially Planning
- Legal knowledge
- Organisational skills
- Clerical Media (including social media, data analysis, mapping)
- Public relations
- Project management
- Financial management

If you are curious how you might help, and want to have an informal chat please email patricia.stuart-mogg@wansford-pc.gov.uk

WINTER PLANTS AT SULEHAY

Once the autumn leaves have fallen other aspects of Sulehay forest become noticeable. Wild Clematis or Old Man's Beard makes a spectacular show scrambling over bushes and fences in open areas with its fluffy seed heads. It was named Traveller's Joy by the sixteenth century writer John Gerard. Woodbine is another old name and a sprig was once included in bridal bouquets. 'Boy's bacca' and 'shepherds delight' are references to the practice of cutting winter stems for smoking.



The dark evergreen leaves of ivy are noticed spreading over the ground and climbing trees. The clinging roots with adhesive suckers are used only to support the plant and take no nourishment from the tree. Large feeding roots grow into the soil to provide water and minerals.

Yellow green flowers bloom in October, providing nectar for late insects such as bees and red admiral butterflies. The toxic black berries ripen around Christmas time. The leaves do not appear to be eaten by small creatures but are said to act as a tonic to sick farm animals.

A solution of boiled ivy leaves in water was used last century to clean and revive colour in black clothes. A girl's verse collected from all over the United Kingdom suggested that an ivy leaf could foretell marriage prospects.



*Ivy, ivy, I love you.
In my bosom I put you.
The first young man who speaks to me,
My future husband he shall be.*

There has been a fine show of berries this autumn. The deep red haws of the Hawthorn or May tree are abundant now and are a popular snack for the thrush family including our native Blackbirds which are joined in winter by migrants from Scandinavia.

The two winter thrushes are also seen in flocks feasting along hedgerows and woodland rides. Redwings arrived from Northern Europe and Iceland in October and their high 'seep' calls were heard

after dark as they flew over Ringhew during one of the regular Wildlife Trust bat surveys. Fieldfares have arrived from Norway and surrounding countries as winter takes hold, they are bolder and louder with sharp 'schack' calls.



Bright red oval rose hips add colour to the ride edges. During and after the Second World War schools organised late summer expeditions to pick newly red rose hips at 3d per pound for the commercial production of vitamin C rich syrup which was sold to mothers at a fixed price of 1s 9d. Many readers may remember the daily sweet tasting spoonful.

Ex schoolboys will also remember the use of rose hip seeds as itching powder when placed down the back of unsuspecting pupils' necks.

The exotic shocking pink four lobed berries opening to reveal bright orange seeds make the Spindle tree stand out in the dull winter woods. This small slender shrub grows on limestone and chalk in the south of the country and is seen along the main ride at Sulehay. The hard pale yellow wood was used to make hand spindles for spinning wool in Holland. In Britain skewers, pegs and knitting needles were more often made. Before chemist's shops the berries were baked, powdered and rubbed into hair as a remedy for little visitors.



PETERBOROUGH
CONSERVATION
VOLUNTEERS



Walkers through Sulehay may have noticed the slow restoration of the limestone wall between the wood edge and the parish field alongside the Yarwell road. A lot of work by Nick Owen and contributions by Wildlife Trust members on drystone walling courses as well as weekend sessions by Peterborough Conservation Volunteers have led to most of the wall being rebuilt. The stones are cleared down to the flat foundations then rebuilding begins with large pieces on the outside faces and small stones wedged in the centre as infill. The largest stones are placed across as 'throughers' to bind the two sides together. The wall is topped with triangular 'coping stones'.

Although the fallen piles of stones offer homes for small creatures such as snails and woodlice the finished wall provides many more crevices which will be used for shelter by creatures from spiders to shrews.

NEW YEARS RESOLUTIONS

Many people at the beginning of 2025 will be tempted to make New Year resolutions and I wonder why. What is it that they want to achieve? Maybe, they are looking for a way to change their lives for the better by giving up smoking or Vaping or alcohol or drugs. Maybe they want to save money and plan economies so that they can spend more on the things they need or want in their lives. Perhaps they are just dissatisfied with life and need a change, hopefully for the better but never worse.

Whatever they are wanting to achieve as an outcome, it suggests that there is something lacking in their lives and this is one way in which they might achieve it. And so, slowly but surely, as the first few months progress, the persistence and determination to reach the goal, whatever it might be, evaporates away and they fall back into the same old behaviour patterns. As we grow older of course we become worldly wise to our own abilities to achieve these goals. If we are sufficiently dedicated and persistent, then age can bring on a way of making changes for the better (or worse) at any time of the year. But still, and for all our experience, as so often happens, slowly but surely, the persistence and determination to reach the goal, whatever it might be, dissolves and life remains unchanged.

Many years ago and through a very worthwhile organisation called Al anon (strong, international supportive groups for family members of alcoholics), I learned to apply the following to my life. It changed my way of thinking for ever.

God grant me the serenity to accept the things I cannot change.

The Courage to change the things I can.

And the wisdom to know the difference.

May 2025 be the year when your life becomes more fulfilled, more joyous, more peaceful and more contented

David B Johnson



THE ARTS SOCIETY PETERBOROUGH

The Arts Society is a leading arts education organisation that brings people together through a shared curiosity for the arts. Each year The Arts Society Peterborough (TASP) holds nine illustrated talks given by experts in their field on subjects ranging widely, including old Masters, modern sculpture, silver jewellery, the work of David Hockney and music in art. The talks are held at

The Fleet in Fletton Peterborough on the second Thursday of each month except June, July and August. The talks start at 10.45 am but you are welcome to come earlier and meet like-minded people for a chat over a cup of coffee, doors open at 10.15am. Non-members are always welcome, so come and join us!

In addition to the live talks, annual members also receive other benefits. If you wish to find out more about our Society or about becoming a member, please visit our website, www.the-arts-society-peterborough.org.uk. Our next two talks are:

9th JANUARY 2025

‘Sir Henry Wood, founder of the Proms and Master Musician’ with Professor Raymond Holden.

Using rare film clips, recorded sound examples and other performance artefacts, this talk will examine the life and times of Sir Henry Wood and the impact that he continues to have on today's musical life.



Plumbing & Heating

- Boiler Replacement
- Boiler Repairs
- Cylinder Changes
- Heating Systems
- General Plumbing
- Heating Controls

Bathrooms

- Bathroom Installation
- Baths / Basins
- Toilets
- Wetrooms

Contact us today to discuss your requirements!

Mobile: 07846 428600 / **Office:** 01733 590501

Email: james@willowservices.co.uk

www.willowservices.co.uk



JASMINE MASSAGE & SPA

TEL: 01733 813385

WWW.JASMINEMASSAGE.CO.UK

Deep Tissue Massage, Swedish Massage, Thai Aromatherapy

Infrared Sauna

Open - 10am to 8pm Monday to Sunday

Book Online or Walk In

www.jasminemassage.co.uk TEL: 01733 813385

Gift Vouchers available for any occasion

7 Wentworth Street, Peterborough, PE1 1DH

Gift Card



LETTERS TO THE EDITOR

email craig@ascotgraphics.co.uk

Surgeries in our area are expressing some concerns over the proposed Digital Access to Healthcare initiative that will likely be adopted not only for Cambridgeshire and Peterborough but also for eventually the rest of the country. Whilst the draft proposals (initially aired late last year) insist that patients will still be able to contact their local surgery or hospital by phone or in person many people already find such contact difficult. The proposals will ultimately mean you will not be able just to book a GP appointment or attend A&E as is the case at present but instead it is likely that you will be sent to a pharmacy or to an NHS website without any interaction with a nurse or doctor.

There will, of course, be those who see this move towards an NHS Digital age as a benefit and embrace the changes with optimism but we must not, at the same time, forget those elderly patients who are not IT savvy or those who through disability already find accessing modern technology difficult. The cost of the new system is estimated at around £10 million but one could be forgiven for taking a cynical view of this budget. The last time the NHS tried to introduce a major integrated IT system it cost many times this amount and still we have a situation where many hospitals cannot access their patients records. In January 2013 the BBC (amongst many others) reported on the 'The NHS's Troubled Relationship with Technology' so any new proposals hardly fill one with a great deal of confidence.

Coming in under that radar, this is a policy that will have far reaching effects on the way we access health care in the future. Should these proposals be enacted (which is more than likely) it will mean rather than going straight to A&E or calling your local GP practice for an appointment you will need to login into a digital platform which will tell you where to go. This means you might be sent to a pharmacy or an NHS website without the ability to speak to a nurse or a doctor. In turn this will mean your health record will need to be shared with a much wider forum than is currently the case. It is more likely that those who will deal with your medical condition may well be using artificial intelligence (AI) to give advice on your health issues. It is difficult to see how more elderly patients or indeed those with learning disabilities will be able to access the help they need. Patients who don't have WiFi, smartphones or computer skills will find accessing the help they need extremely difficult not to mention those with poor vision.

Local Patients Participation Groups are keenly aware of concerns doctors in their surgeries have about the proposed new practices. Indeed, one has gone as far as to say it could be the end of the family doctor service on the NHS. Similarly, we should be mindful of the fact that our rights to attend hospital in an emergency is under threat.

The Cambridgeshire and Peterborough NHS survey is seeking your views on the plans for digital access. Whilst there may well be some who welcome the changes proposed there will no doubt be many who will find integrating with the new service exceptionally difficult. If you feel strongly about your right to access either your local practice or hospital in a way and at times of your choosing then please think about completing the survey that can be found at

www.healthwatchcambridgeshire.co.uk/form/improving-digital-access-to-healthcare.

The preliminary comments suggest that direct access to the surgery staff will still be available, but it is not clear how this will work given statements relating to the overall policy on 'Digital Access'.

It will also be important that for those friends or family members who are not familiar with IT or cannot access the survey themselves that they are able to have their say on these new policies and practices. Remember these proposals will affect everyone from cradle to grave.

Bernard Kane

VAL-TECH SOLUTIONS

"Excellence comes as Standard"

Professional Valeting

Call Adrian on
07971966515

Mobile valeting services

'Professional' valeting carried out at your home or place of work. Our fully equipped vans are self-sufficient with water and power. Only top quality products used to complete your valet to a high standard.

Private and corporate work undertaken, Guaranteed professional results from Professionally trained valeters.

Full range of valeting programmes available: Mini valets to full detailing work and paint rectification

Please call us on – 07971 966515 for your booking or enquiries



VAL-TECH SOLUTIONS LTD

Peterborough

07971966515 adrian@val-techsolutions.co.uk | www.val-techsolutions.co.uk





**PROFESSIONAL CARE
YOU CAN TRUST**

A home like no other

We Offer:

- Luxury setting + Fabulous Views
- Outstanding Care
- Excellent Food / Own Chef
- Cinema, Gym and Hairdressing Salon
- Nurses on duty 24 hrs a day
- Private Dining Facilities
- Beautiful Café and Bar
- All Inclusive Fees, No Hidden Extras

Residential | Dementia | Nursing & Respite Care



Call us now
01780 432610 / 07551 945608

 **Grand View Care Home**
Uffington Road Stamford Lincolnshire PE9 2EX

grandviewcarehome
grandviewcarehomeuk
laura.mills@galsiacaring.co.uk
www.grandviewcarehome.co.uk





**yes
you
can**
with
**Slimming
World**

*Come along and say hello
at our Wittering Group*

**Wittering Parish Hall
Townsend Road
PE8 7TG**

*Every Wednesday at
5pm or 6.30pm*

**Contact:
Debra 07880567310**

slimmingworld.co.uk



touching hearts, changing lives



Just ask

Making the right decisions can be stressful at the best of times, but we are here to help. Whatever's on your mind, just ask.

TOBIAS COLTON BA(Hons) DipPFS
Principal
TOBIAS COLTON WEALTH MANAGEMENT
Associate Partner Practice of St. James's Place Wealth Management
07468 428 380
tobias.colton@sjpp.co.uk
www.tobiascoltonwealthmanagement.co.uk







ST. JAMES'S PLACE
WEALTH MANAGEMENT

The Partner Practice is an Appointed Representative of and represents only St. James's Place Wealth Management plc (which is authorised and regulated by the Financial Conduct Authority) for the purpose of advising solely on the group's wealth management products and services, more details of which are set out on the group's website www.sjp.co.uk/products. The St. James's Place Partnership and the titles 'Partner' and 'Partner Practice' are marketing terms used to describe St. James's Place Representatives.

SJP12026 V1 (04/20)

NEWS FROM WANSFORD AND KINGS CLIFFE PRACTICE

Health Goals You've Been Putting Off: New Year, New Plan

The start of a new year often inspires thoughts of self-improvement, and there is no better area to focus on than your health. Yet, many of us have a list of health-related tasks we've been procrastinating on—those check-ups, habits, and changes we know we need but haven't prioritised. This year let's turn "someday" into today. Here is a guide to tackling common health goals you might have been putting off, and how to make them part of your 2025 plan.

Schedule Overdue Health Screenings

Preventive care is key to catching potential health issues early, but it's easy to let those appointments slide. Common screenings include:

- **Blood pressure check:** it is recommended that all people aged 45 and over check their blood pressure. You can do this by calling into the surgery to use our machine in the foyer or most pharmacies offer this check.
- **NHS Health Check:** If you are aged between 40 and 74 and have no pre-existing health condition you are eligible. Everyone has a chance of developing heart disease, stroke, kidney disease, type 2 diabetes or certain types of dementia. The NHS Health Check will help you and your GP or health professional to identify your risk earlier. The health check includes a cholesterol test and blood pressure check.
- **Overdue Cervical screening:** Ensure you book an appointment when you are reminded to. This test is important because it can help prevent cervical cancer by detecting precancerous changes. Regular screening can reduce the risk of cervical cancer by up to 70~%
- **Bowel Cancer Screening:** This is offered to patients aged between 54 to 74 every two years. You can request a kit (if you have not been sent one) by calling 0800 707 6060. The test involves sending a very small stool sample.
- **Breast Cancer Screening:** Anyone registered with a GP as female will be invited for NHS breast screening every 3 years between the ages of 50 and 71. You'll get a letter in the post inviting you. If you think you are overdue or have missed your appointment please ring 01536 491318
- **Immunisations**
- Are your immunisation up to date? You may be eligible for a Shingles, Pneumonia, RSV, and influenza jabs. Check with reception.

Final Thoughts

Health goals don't have to be overwhelming. Breaking them down into manageable steps and starting now will set you up for a healthier, happier year. Remember, progress is better than perfection—so let this be the year you finally cross those health tasks off your list.

Please contact Wansford Surgery via our on-line platform on our website for any query or call reception 01780 782342. Please note that our phone lines are busiest between 8am and 9.30am.

Here's to a healthier you in 2025





Call Glen anytime on 07771 784643

Boat Hire on The River Nene

Day/Weekend/Long term hire

Gilly fishing trips (full kit available)



Local Fabrication and Site Welding

Repairs or New Builds

Gates/Fences/Farm Machinery

Any job never too small



Local Log Delivery



All logs cut to order

Mobile logging service

Mobile log splitting service

Dead tree felling service

Wansford Horticultural & Craft Society

This update contains: Notes from AGM, Christmas Social, Events Schedule 2025 and Wansford Show 2025. **If you wish to join our Society its great value and fun at £5. Please contact Rhonapunter@aol.com.**

Notes from AGM: Thank you to our members for great support during the 2024. We started the year in a very worrying financial position due to a £12,000 loss at the 2023 Wansford Show. We are delighted to say that through much hard work and your generous participation and donations we are back in safe ground with a cash balance of £4,300. This will now allow us to have a bit of freedom to have fun with our events in 2025 (see attached).

The key to our financial turnaround have been: £434 members donations (on top of subs); £1,160 raised at our Castor House plant sale and £500 profit from our Xmas & Summer Socials. We also gave £200 to Sue Ryder charity.

Highlights for 24 have been: the sun coming out for our Spring plant sale at Castor House (after so much rain), The sausage rolls at Molesworth garden; our quintessential summer garden party at Mandy & Barry's and visiting our Botanical heritage at University of Cambridge. Thanks again. There was an expression of thanks from the floor of the AGM to the committee (Gary, Quentin, Rhona, Mandy, Liz & Ian) for their great hard work. All will continue in role. What gives us the most delight is arranging events where we can both learn and have fun with friends. Long may that continue.

Christmas Social: Thanks to our many guests who came along to our Christmas Social and AGM last night.

From the lovely feedback, our traditional evening was very much enjoyed, with great home cooked food, good value, fiendish botanical quiz and raffle. It was really nice to chat and catch up with friends in a relaxed atmosphere. It went well.

We had a fantastic turnout for the table decoration competition and well done to everyone for the creativity and fun. The winners photo (above L-R) - Claire, Kate 1st, Ashley. I also wish to say a massive thank you to Quentin, Rhona, Liz, Mandy, Sue and Gloria for all the preparation cooking and tidying away. Our feet were sore by end of evening.

2025 Events Schedule: Please see our Events Schedule for 2025 attached. Hopefully we can tempt you with the talks, visits and social events on offer.

We start off the year in January being hosted at **Bosworth's our local garden centre** and then in February we get to see the **Snowdrop collection at Burghley** (that was transplanted by ourselves and Joe Whitehead from a garden in Wansford). Something new for March & October, '**Hortitalk**', enriching our gardening skills by holding a couple of fun evenings (with a glass of wine) to explore a number of tricky subjects - no such thing as a silly question.

Our **plant and bulb sales** return and we will be raising money for charity from these events. In the Spring, we have arranged a couple of visits: to the delightful **Herb Nursery** up the A1 at Thistleton (my favourite place to buy plants) plus a very interesting visit to Ferrar House in Little Gidding and learn about gardens, religion, history and the poetry of T. S. Eliot. Our **Summer Social** has become a delightful favourite, and we return to Mandy & Barry's garden for the quintessential English Garden Party.



Back by popular demand, we are looking to put on another **Grand Weekend** in 2025 to go to East Ruston Vicarage Garden (as seen on Gardeners World) in Norfolk, stay in a hotel in Cromer, enjoy dinner together. Then on Sunday, after a hearty breakfast, we would visit Felbrigg Hall (in top 10 of National Trust sites).

Wansford Show. Finally, we have not announced a return of the Wansford Show for 2025. Instead a new sub group, led by Quentin, will take a look at the future of our traditional element i.e. the Horticultural Show. It intrigues us that we get more table decorations competition entries at our Social(s) than we have done at recent Shows. Something to build on we hope.

Gary Punter
Chairman
garypunter@aol.com

Wansford Horticultural and Craft Society: 2025 Events Schedule		
Month	Event	Venue
16 th Jan	Houseplants @ Bosworths Talk by Peter Bates	£5 pp 5pm Bosworths Elton
7 th Feb	Snow Drop Walk (The Wansford Collection @ Burghley) Tour by Joe Whitehead,	£12pp, 1400hrs Burghley House
13 th March	Social Evening ‘Horti-talk’ Discuss solutions to our knotty Spring gardening challenges over a glass of wine	7.30pm Christie Hall
1 st April	Plant Sale “Plants on the Wall” for Charity	Goss Cottage
4 th April	Visit to Thistleton Herb Nursery A delightful plant nursery, intro, tea & cake & buy plants	£5pp, 2pm LE157RE North of Stamford
15 th May	‘Gardens, History, Poetry, Religion & Botany’ Ferrar House (Tour & Lunch included)	£10pp, 1030 am Little Gidding PE28 5RJ
28 & 29 June	Overnight Visit to Norfolk, Hotel, Dinner and visit to the superb East Ruston Vicarage Gardens (as seen on Gardeners World 2024) plus another garden.	£200-240pp Dependant upon numbers
12 th July	Summer Extravaganza: BBQ and early evening musical entertainment	£15 pp, 4pm Mandy Garden, Stibbington House
September	Our popular Bulb sale (fundraiser for Charity)	Goss Cottage (Shop)
16th September	Tour & Afternoon Tea at The Manor House, Bedford <i>As seen on Gardeners’ World 2023/24</i> www.kathybrownsgarden.com	£10pp, 2pm Church Rd., Stevington Bedford MK43 7QB
9 th October	Social Evening ‘Horti-talk’ Discuss solutions to our knotty Autumn gardening challenges over a glass of wine	7.30pm Christie Hall
November	Talk to be announced	7.30pm Christie Hall
6 th December	AGM & Christmas social	Christie Hall 7pm

THE CHRISTIE HALL

Elton Road, Wansford
(registered charity no 1033998)

A well-equipped hall
with large kitchen and parking.

**Available for parties,
receptions,
meetings,
activity groups
and most types of private functions**



For more information
and details on how to book
visit our website

www.christiehall.co.uk

FREE QUOTATIONS & ADVICE

07932 970 225

info@jhroofandhome.com



- Roof Repairs / Maintenance / Renewal
- Gutter Cleans
- Fascias / Soffits / Gutter Replacement
- Moss Removal & High Pressure Roof Cleans
- Loft Boarding/ Storage Solutions



Customer Review:
"Very Professional. Kept us updated on
progress. Respected my property. Good
Price. Helpful"



COFFEE+ CAKE + COMMUNITY

WHEN

**FIRST FRIDAY OF
THE MONTH**

**10.30 - midday or anything in between
Friday 7th Feb**

WHERE

Thornhaugh Church

COST

£3

FEATURING • Cafetière coffee and
delicious cakes.

In future we aim to have crafts, puzzles
and games if there is interest.

**EVERYONE
WELCOME**

AT THE DOOR
£3 for coffee and
cake (free for
bakers).

**CCC. A SPACE TO
CATCH UP IN COM-
MUNITY**

**QUESTIONS OR
OFFERS TO BAKE**
nikki@4stonecottage.co.uk

Talk and Social LET'S TALK ABOUT BEES

Friday, January 24th
7pm

St Andrew's Church,.
Thornhaugh

Social from 7pm -7.45pm followed by talk

FEATURING

Our local beekeepers, Keith and Yana Clipsham. Learn
about our symbiotic relationship with these bugs in a
box.

Tastings and sales on the night too.

TICKETS

£5 including soft drink refreshments
and nibbles

From nikki@4stonecottage.co.uk

LICENSED BAR SELLING BEER
AND WINE

DIRECTORY OF CONTACTS

For all enquiries, contributions and adverts

Craig Bunday	craig@ascotgraphics.co.uk	07771 538661
Ascot accounts	accounts@ascotgraphics.co.uk	01487 801301

Parish Councils

Sutton	Deirdre McCumiskey (Clerk)	01780 782668
Wansford	clerk@wansford-pc.gov.uk	
Sibson-cum-Stibbington	Margery Beuttell (Clerk@stibbington.org.uk)	
Thornhaugh	Deirdre McCumiskey (Clerk)	07565 499346
Water Newton (Parish Meeting)	Caroline Nathan (Chairman)	07989 362514

City Councillor (Wittering Ward) - Gavin Elsey **07738930599**

Churches

Ministers: Thornhaugh & Wansford	01780 782271
Stibbington, Sutton, Castor & Water Newton	01733 380900
admin.castor@btconnect.com	

Churchwardens:

St Andrew's Thornhaugh:	Stuart Foreman	01780 783220
	Liz Kemp	01780 782333
St Mary's Wansford:	Caroline Ashley	01780 782408
St John the Baptist, Stibbington	Charlotte Bradshaw	01780 781805

Friends:

St Mary's & St Andrew's	Caroline Ashley	01780 782408
St Remigius Water Newton	Jack Ward	01733 394646

Other useful contacts

Neighbourhood Policing	101	P'boro City Council	01733 747474
Wansford Surgery	01780 782342	Royal British Legion	01780 782200
(Out of hours	111 option 4)	Stibbington & Wansford WI	. . 781733
Wansford Pharmacy	01780 781616	Cricket Club	07860 278800
Communicare	01780 470437	Horticultural Society	01780 592514
H'don District Council	01480 388388	Stibbington Centre	01780 782386

Website **www.livingvillagesmagazine.co.uk**

©2024 Living Villages Magazine The contents of this magazine may not be copied, reproduced, distributed, republished, downloaded, displayed, posted or transmitted in any form or by any means without the prior written permission of Living Villages Magazine. You may not distribute, display or copy any of the contents of the pages contained in this magazine to third parties without the prior written permission of Living Villages Magazine. All images shown in this magazine are the property of Living Villages Magazine unless otherwise accredited to another. Images may not be used without the prior written permission of Living Villages Magazine or the accredited owner. Unless otherwise specified, the authors of the literary and artistic works in the pages in this magazine have asserted their moral right pursuant to Section 77 of the Copyright Designs and Patents Act 1988 to be identified as the author of those works. If permission is sort and given, it is expected that all articles/images be accredited to either Living Villages Magazine or the author of said articles/images. The views expressed in articles published are strictly those of the writer, and not of Living Villages. Living Villages cannot vouch for products and services advertised, nor accept any liability resulting from the purchasing of products or services, although care is taken to ensure their suitability.

Beat the midwinter blues!

Book your next holiday with Kirstie

Here's why...

- She has a wealth of travel experience
- She offers world wide cover, guided tours, cruises and rail journeys
- She can tailor make your ideal package or multicentre itinerary
- She can sell packaged holidays such as Jet2, Kuoni and Easyjet
- She's with you 24/7 for customer support - even when you're on holiday!
- She offers 100% financial protection
- She is professional, friendly and caring

MULTICENTRE • CRUISES • GUIDED TOURS

Why wait? Call **01767 360014** or **07815 814798**
or email **kirstie.timmins@travelcounsellors.com**

 **kirstietimmins**

myTC

YOUR ONLINE ACCOUNT
WITH TRAVEL COUNSELLORS

- Simple to use
- Available via Website and App
- Flight Alerts, inc. cancellations and gate changes
- Detailed hotel information inc. maps and videos
- All your travel documentation in one place

 **travel
counsellors**

NORTON RICKETT

Local Independent Estate Agents

- Free Market Appraisals
- Probate Valuations (RICS Surveyor)
- Local – Office near Wansford
- Established & Trusted since 2012
- Advertising on Rightmove
- Office Presence in London

NR

NORTON  RICKETT
TOWN | COUNTRY | EQUESTRIAN

www.nortonrickett.co.uk

01780 782 999



Crown

Property Services

- 👑 Electrical & Plumbing
- 👑 Kitchens & Bathrooms
- 👑 Renovations
- 👑 Extensions
- 👑 Windows & Doors
- 👑 Groundworks
- 👑 Landscaping
- 👑 Internal Refurbishment

Old Sulehay Cottages, Sulehay Road, Wansford. PE8 6PA

07766 168659

jonathon@hibbins.me

Village Pizzas

Open Tue – Sat for
Collection / Eat-In at
Leedsgate Farm

4.30pm – 10pm

Or

Delivery 6pm till 10pm

01780

784587

View our Menu at
www.villagepizzas.co.uk



Justine

BROMAGE FITNESS

Mat based Pilates and Chairobics
Classes for all levels

MAT BASED PILATES

1 hr classes

Online on Zoom, or in person at
Christie Village Hall (Wansford) and Harringworth Village Hall

Monday, Tuesday, Wednesday and Thursday
£4 online / £6 in person



Justine Bromage
Fully Qualified Level 3
Pilates Instructor
Level 3 Personal Trainer
RSA To Music Instructor

Ease back pain
Strengthen your core, abs and back
Improve sports performance
Exercise without joint pain
Increase your flexibility
Boost brain power and focus

Christie Village Hall:
16.45 and 18.00 Monday
12.30 Wednesday
Online:
All the above times streamed
plus 11.00 and 12.30 Tuesday
11.30 Thursday

justwhim@hotmail.com

07919 106156

 **Greenwood
homecare**

Award-winning home care in Peterborough

- ✓ Personal Care
- ✓ Companionship
- ✓ Complex Care
- ✓ Medication Support
- ✓ Live-In Care



01733 808531

peterborough@greenwoodhomecare.co.uk

www.greenwoodhomecare.co.uk