

Living Villages

Image taken by John Measures

January 2024

*Water Newton Thornhaugh
Stibington Sutton Wansford*

Call us today to book your
free appointment

Heritage Wills

Peace of mind when you need it most



Will Writing



Client Care
Package



Lasting Power
of Attorney



Agricultural
Property Relief



Trusts



Corporate
Benefit Package



Property
Protection Trusts



Tennants in
Common



Probate Services



Property
Title Change

01480 465855 | heritagewills.co.uk

HLC Business Centre, 5 The Quay, St Ives,
Cambridgeshire, PE27 5AR

Editorial

Dear readers

As we move into a new year, is it time to put the past behind us? Unfortunately for some 2023 was a year to forget, and I make no apologies for dedicating this editorial to a call to arms on two fronts, for **The Wansford Show** and **The Horticultural & Craft Society** as a whole, who suffered badly due to very unforeseen circumstances last August. The Society was brought back from the brink of financial disaster and the new Wansford Village Show is now in need of organisers and funding, you can read about this on page 11 and pages 23 onwards.

My thanks to all other contributors and regulars in the magazine, including a reflective piece from David B. Johnson on page 19, plus news from the **Wansford and Kings Cliffe Medical Practice and Pharmacy**, which we hope will become regular spots. And finally, if you're a local business, there are good reasons to advertise with us, look below to find out why, and if interested do get in touch - contact details are on the back inside pages.

Best wishes

Craig

Contents

6	Worship & Benefices
10	Stibbington and Wansford W.I.
16	Parish Council Notices and Minutes
23	Horticultural Society
26	Contacts

Calling Local Businesses

Why advertise in Living Villages?

- 1 You're reminding people that you're there**
 It pays if you have a new product or service to keep at the forefront of people's minds
- 2 You're introducing yourself to new people in the villages**
 People who move into the area won't know about your services
- 3 You're helping the local economy**
 If more people buy from you, that's more money spent locally
- 4 You're helping the local community**
 Living Villages use some of the advertising revenue to donate to The Wansford Show plus other good causes

It pays to advertise, and it doesn't cost as much as you think

Call us on 01487 801301 for a rate card



LAUREN BAILEY

AESTHETICS

Our treatments include:

- Skin Boosters - Prophilos, Seventy Hyal, Lumi Eyes, Sunekos & Jalupro
- Advanced Anti Wrinkle Injections
- Treatment of Excessive Sweating
- Fat Dissolving
- Lip Enhancement
- Chemical Peels
- Vitamin Injections
- Dermal Fillers
- Micro-Needling
- PDO Threads

Scan QR Code to book



Find us on   laurenbaileyaesthetics

COVERING WANSFORD, STAMFORD & PETERBOROUGH



Dry carpet cleaning and upholstery cleaning services in Peterborough and the surrounding areas.

Whether you have an individual chair or carpet in a domestic property, or are interested in contract carpet cleaning in your business, you can benefit from our 35 years experience.

Telephone: **01832 280429**

Mobile: **07951 124374**

Email: **info@bcnmulticlean.co.uk**

GRIFFIN

**Solid Fuel Merchant
Supplier of Pre Packs**

**Coal Bunkers Charcoal Compost
Flo Gas Logs & Sticks Salt**

**Coal Yard
Station Road
Nassington
01780 782540**

**Office
12 Church Hill
Castor
01733 380470**

BARKLEYS GARDEN SERVICES

Your LOCAL Gardening Team

**Regular garden maintenance
Lawn care and mowing
Hedge trimming**

Lady gardener available

Get in touch by calling

Bev - 07593 721144

Peter - 07747 502471

beverleybarkley1@gmail.com

NEED A RECOMMENDATION?

The **ONLY** Police Checked
recommended register of
local approved traders



FREE and EASY service

safelocaltrades.com
★★★★★

Recommended & Approved



Much more than just a recommendation ...

Serving the PE Postcode community since 2008

Over 70 different trade categories and over 17,500 reviews

Here are some of our members ...

New Garage Door & Repairs



**GARAGE DOOR &
SHUTTER SERVICES**

www.garagedoorandshutterservices.co.uk

Call Dave on

t 07709 337647

Electrician

**OLD COURT
ELECTRICAL**

www.oldcourtelectrical.co.uk

Call David on

t 07973 507420

**Loft Insulation & Boarding,
Cavity Wall Insulation**



**A TO Z
ENERGY SOLUTIONS**

www.atoz-energy.co.uk

Call Leanne on

t 07878 314562

Building & Carpentry Services



Steve Deprez & Son
Building • Brickwork • Carpentry

Preserving the past. Building the future.
stevedeprezbuilders@gmail.com

Call Steve on

t 07414 292188

**Driveways, Patios &
Hard Landscaping**

**STYLE
HOME IMPROVEMENTS LTD**

www.styleimprovements.com

Call Tony on

t 07879 881315

Gutter Cleaning & Repairs

**THE
GUTTER CLEAN
COMPANY**

www.guttercleancompany.com

Call Jeremy on

t 0800 179 9363

**Roofing Specialist. Fascias,
Soffits & Guttering**

**Synergy
Roofing**

www.synergyroofing.co.uk

Call Simon on

t 01733 711711

Kitchens & Bathrooms

APG BATHROOMS

www.apghomeimprovements.co.uk

Call Aaron on

t 01733 568651

in association with ...



**Neighbourhood and
Home Watch**
Looking out for the community

**Cambridgeshire
& Peterborough
ageUK**



**CAMBRIDGESHIRE AND PETERBOROUGH
AGAINST SCAMS PARTNERSHIP**

To see our full list of members and read all reviews just go to ...



www.safelocaltrades.com



0800 014 1832



The safest way to source local traders

Tear out page and keep

WORSHIP DATES

Every Sunday 5.00pm - Zoom 'At Home' Service. Log in and phone details from Rev. Jane jdtailby@aol.com 01780 782271

St. Leonard's, Apethorpe

7 th	11.00 a.m.	Holy Communion
21 st	11.00 a.m.	Holy Communion

St. Mary's, Wansford

Every Wednesday 10.00 a.m. Morning Prayer		
14 th	9.30 a.m.	Holy Communion
28 th	9.30 a.m.	Holy Communion

St. Mary's and All Saints, Nassington

Every Thursday 9.30 a.m. Holy Communion BCP		
7 th	8.15 a.m.	Holy Communion BCP
7 th	9.30 a.m.	Morning Prayer
14 th	9.30 a.m.	Holy Communion
21 st	3.00 p.m.	Craft Service
28 th	9.30 a.m.	Holy Communion

St. Mary's, Woodnewton

7 th	9.30 a.m.	Holy Communion
21 st	9.30 a.m.	Holy Communion
28 th	8.30 a.m.	Holy Communion BCP

St. Andrew's, Thornhaugh

7 th	9.30 a.m.	Morning Prayer
21 st	9.30 a.m.	Holy Communion

St. Mary Magdalene's, Yarwell

14 th	11.00 a.m.	Holy Communion
21 st	3.00 p.m.	Methodist Service
28 th	11.00 a.m.	Holy Communion

Happy New Year!

I hope that your Christmas celebrations went well and that there will be joy for you and those you love in 2024. There was so much going on in our churches over Christmas and it is good to begin with a "thank you letter" to all those who worked so hard in so many ways to make sure that our celebrations were so wonderful. Thank you to everyone who shared in our Christmas services in church and provided a warm welcome for regulars and visitors alike. Thank you to our wonderful cleaners and flower arrangers, those who came up with new ideas and those who made sure that our traditional celebrations continued, those who prepared services and the church buildings, rang bells, made refreshments and provided wonderful music. All that you did was so much appreciated!

It seems rather strange to be writing those words, knowing that when you read them, the Christmas events will have taken place and enjoyed, but I am writing this well before most of our Christmas activities have even taken place. Printing deadlines always mean that I am writing my letter in the middle of the preceding month. I don't suppose I am the only one who, for one reason or another, is always planning into the future while something else equally special is going on. For example, as well as thinking about the January magazine, I am also starting to think about Lent and Easter. Whatever the reason for always feeling we need to plan ahead (and that's no bad thing, of course), the danger is that we then don't enjoy what is going on around us at this moment. I remember learning at school a poem that began "What is this life if, full of care, we have no time to stand and stare?" Just taking a pause and being in the moment is important, or we can miss something special. These days that is called mindfulness, but Christian tradition has always encouraged us to pause and simply "be" for a while, remembering that this moment is God's gift and he is present there. Maybe a new year's resolution might be to "stand and stare" now and again to appreciate the beauty of our surroundings or the wonder of a particular moment. As I go back to planning for Lent and Easter, I will make sure that I do that now and again!

With every blessing for the new year.

Rev. Jane

REFLECTIONS

CASTOR BENEFICE

We are still maintaining the following service pattern every Sunday in each of our **Parish churches** until further notice.

Marholm 9.00am - Holy Communion (Morning Prayer on 4th Sunday)

Castor 8.00am Holy Communion (said service) 10.15am - Sung Eucharist

Sutton 9.00am on 4th Sunday of the month - Holy Communion

Every **Wednesday** morning at **10am** there is a service of Holy Communion at **Castor**.

We still continue to celebrate **Evensong via Zoom at 6pm every Sunday**, if you wish to join us please contact the Benefice office for the Zoom link and access code.

admin.castor@btconnect.com

The next service at St. John the Baptist, Stibbington will be **Pancake Sunday on the 11th of February at 4pm**, see separate poster.

David Ridgeway

ST. JOHN THE BAPTIST STIBBINGTON

**OUR NEXT SERVICE
WILL TAKE PLACE ON**

SUNDAY 11 FEBRUARY AT 4.00 pm

PANCAKE SUNDAY



**Do come and join us, you will be
assured of a VERY warm welcome**



jc.heating
SERVICES

Oil boiler servicing and
repairs, heating controls,
hot water service and repairs.

Your local heating expert for
over 15 years.

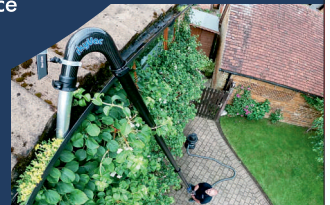
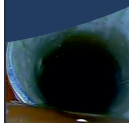
Jo Childs,
8 Black Swan Spinney,
Wansford.

Mob : 07729036942

Perfect Drainage Solutions

Your Drainage Experts (est 2023)

Gutter Cleaning
CCTV Drainage
High Pressure Water Jetting
Drain Blockage Clearance
Tanker Service
Repairs



07817723610

info@pdsLtd.co.uk

www.perfectdrainagesolutions.co.uk

THE SPECIALISTS IN HEALTH CARE



Podiatry & Chiropody

Nail Surgery For Ingrown Nails,
Biomechanics & Orthotics, Diabetic Foot Care, Verrucae, Corns,
Cracked Heels, Calluses, Hard Skin, Nail Reconstruction

Now
Accepting
New
Patients!



Ear Wax Microsuction

Ear Ache? Hearing Loss? Blocked Ears? Pre Hearing Test Clean?
It could just be wax! Safe, Gentle and Effective Ear Wax Removal



CryoAesthetics for Skin Lesions

Skin tags, Freckles, Age/Liver Spots, Milia, Fibroma,
Seborrheic Keratosis Solar Lentigo, Cherry Angiomas,
Verrucae and warts, Popular nevi (moles, birthmarks)

You can self refer to us for immediate treatment

Home Visits Available

Sue Arnold BSc(Hons) MRCPod & Associates

InStep Foot Clinic, 19 Elton Road, Wansford PE8 6JD

Tel: 01780 782200 wansfordinstep@gmail.com

Castor Lodge Care Home

Our family, caring for yours

At Castor Lodge, our care is the kind we would want all of our loved ones to receive. Offering residential and dementia care, our dedicated team make life comfortable and enjoyable for all our residents, allowing them to live safely and as they choose. Our brand new home is luxurious and beautifully furnished, whilst retaining a warm family atmosphere that makes Castor Lodge feel extra special.

- 68 Spacious en-suite bedrooms
- 6 Premium self-contained suites
- Bistro Café and themed pub
- Sociable lounge and dining areas

To find out more about life at Castor Lodge contact our Customer Relations Manager Laura Mills on 07725 799 217 or email laura.mills@countrycourtcare.com



01733 823 163



Splash Lane, Castor, Peterborough, PE5 7BD



www.countrycourtcare.com



Our family, caring for yours



The Friends of St Mary's and St Andrew's

It was lovely to see so many supportive friends at our Christmas Coffee Stop, and everyone joined together singing carols.

There will be a Coffee Stop on **Wednesday 17th January at 10.30** in St Mary's Church.

With best wishes to everyone for a Happy Christmas and a healthy New Year.

Caroline Ashley



THE ARTS SOCIETY PETERBOROUGH

The Arts Society is a leading arts education organisation that brings people together through a shared curiosity for the arts. Each year The Arts Society Peterborough (TASP) holds nine illustrated talks given by experts in their field on subjects ranging widely, including old Masters, modern sculpture, silver jewellery, the work of David Hockney and music in art. The talks are held at

The Fleet in Fletton Peterborough on the second Thursday of each month except June, July and August. The talks start at 10.45 am but you are welcome to come earlier and meet like-minded people for a chat over a cup of coffee, doors open at 10.15am. Non-members are always welcome, so come and join us!

In addition to the live talks, annual members also receive other benefits. If you wish to find out more about our Society or about becoming a member, please visit our website, www.the-arts-society-peterborough.org.uk Our next two talks are:.

11th JANUARY 2024

J.W.M. Turner (1775-1851) 'From Covent Garden to Rome', by Leslie Primo

This talk presents an expanded visual history of the life of Turner and traces his life from the boy genius to his early entry into The Royal Academy.

8th FEBRUARY 2024

'Secret Art in The Passport', by Martin Lloyd

From the wax seal to the microchip, man has exploited the skill of an artist in his attempt to manufacture a forgery-proof document.

WANSFORD COMMUNITY HALL

Peterborough Road, Wansford

This hall accommodates parties of up to 36 people seated. Ideal for Meetings, Workshops, Aerobics etc

GREAT VALUE AT ONLY £4 per hour
FOR BOOKINGS TELEPHONE
John Stannage 07879 485330

Capitol Lettours



Your local property agent

**With over 30 years of
experience**

Relocation, Lettings and Sales

**Please call our office for a
competitive quote**

Peterborough - 01733 553366

(enquiries@capitollettours.com)

www.capitollettours.com

STIBBINGTON & WANSFORD WI

Today's women working for tomorrow's world



After making
elves at our
l a s t

meeting, Christmas was fully embraced during our December meeting, making gonks, kindly guided by Joan Rae & Julie Chillcott, both keen crafters and previous members of our branch.

Learning how to make these cute little gonks was helped with the odd mince pie and a glass of wine. We all went home with delightful decorations which now can be found on a large number of the trees of our members.

From us all at Stibbington and Wansford WI, we would like to wish everyone a merry Christmas and a peaceful new year.

Looking forward to 2024, our first meeting in January will be taken by one of our members, Jan Armatige. She has been working with a local charity that supports people living in Ukraine, as well as fundraising in this country, she has recently returned from a trip to Ukraine with a lorry full of items that helps those that are living with the conflict.



Over Autumn and winter we will be meeting in Wansford Community Hall, if you wish to attend one of our upcoming meetings to hear one of our visiting speakers, please get in touch.

Please see below for our upcoming events:

Tuesday 9th W.I. meeting 7pm, Supporting those living in Ukraine. Speaker Jan Armatige. At Wansford Community Hall

Tuesday 2nd & 16th January 2024, 2-4pm Coffee & Craft club, at Wansford Community Hall

Thursday 25th January 2024, 7.30pm Book Club meeting, at The Cross Keys Wansford,

Both the Coffee & Craft club, and Book Club are open to all, (not just for WI members) and we look forward to others joining us.

Rhona Punter, email - rhonapunter@aol.com

Wansford Annual Carol Service

The Annual Community Carol Service took place in St.Mary's Church Wansford on Sunday 17th December and was very well supported by villagers.

It followed the traditional format of 9 Lessons read by various local representatives.

The Wansford Church Choir under the direction of Eddie McDonnell lead the singing of popular carols and performed four specialist arrangements The Wexford Carol, Silent Night, The Coventry Carol and Joy to the World.

Appropriate Festive Fayre was enjoyed after the Service.



Wansford Village Show: Attempting to Rescue!

Are you proud to live in a place that has a Village Show? We are starting anew for 2024 and hopeful that we can call upon the support of people and organisations in our village.

We are now attempting to create a new organising team (12-15 persons) from a breadth of villagers and to raise £5,000 funding. We should know by end Feb if we can assemble the team and support required. The image below is a sample only and we are open to ideas that will make the Show a special place to meet friends and family and have a great time. If you have always wanted to be a part in bringing your community together, now is your chance. Contact

garypunter@aol.com

Wansford Village Show



Tug of War (River Nene North vs South)		<i>Bouncy castle</i>
Great music throughout the day – Brass, String & Jazz		
<i>Traditional Horticultural Marquee</i>		Artisan craft stalls
See & Buy Great Artwork	Traditional children's games	Classic cars and bikes
<i>And, by popular demand, something for Wansford Dogs.... Ideas & suggestion welcomed ????</i>		
Pop up interactive craft workshops		Famous Bottle Tombola
Bring a Picnic & a wide range of food & drink to buy		



Meet your
friends & family
and have a great
time





Enjoy a warm Wansford welcome on Saturday 24th August 2024, Bradshaw's Field, Elton Road PE8 6JS



H HEARTYS of Peterborough

Car buying made easy with over 30 vehicle manufacturers on site and 200+ cars in stock

Fantastic part exchange prices offered with fully comprehensive warranty on all purchases

Peace of mind motoring for over 50 years
www.heartysofpeterborough.co.uk

01733 560605
 Unit 10 Flaxley Road,
 Peterborough, PE2 9FT

THE CHRISTIE HALL
 Elton Road, Wansford
 (registered charity no 1033998)

A well-equipped hall
 with large kitchen and parking.
**Available for parties, receptions,
 meetings, activity groups
 and most types of private functions**
 For more information and details on how to book
 visit our website
www.christiehall.co.uk

MOBILE HAIRDRESSING
 Ladies & gents hairdresser with over 30 years experience. ✂
 If you are housebound, have reduced mobility, no transport or simply prefer the convenience of having your hair done at home, I have daytime appointments available. Fully insured. Competitive prices.
Please call Tracey on 01780 782467

The
BIG FIZZ
VINTAGE MOBILE BAR

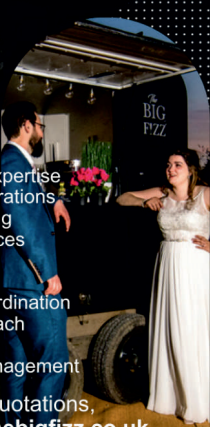
Enhance Your Event

Discover our exquisitely restored vintage Rice Beaufort Horse Box - the perfect mobile bar for top-notch drinks and professional service.

What We Offer

- Wedding & Event Expertise
- Unforgettable Celebrations
- Professional Planning
- Distinctive Experiences
- Indelible Moments
- Tailored Services
- Flawless Event Coordination
- Personalised Approach
- Special Occasions
- Proactive Event Management

For enquiries and quotations, please visit www.thebigfizz.co.uk or call **07738 662388**



PAWS AND CLAWS

★ ★ ★ ★ ★

Boarding Cattery

"Cats have a 'tail' to tell when they've 'paws'd' awhile at Wansford's 5 Star Purr Palace"

Tel 01780 782174
e-mail
pawsandclaws@hotmail.com

Working with Peterborough Cat Rescue to rehome cats and kittens seeking loving homes and laps on which to purr

Peterborough City Council & Rutland County Council
Licence Number: 078015



NEWS FROM WANSFORD PHARMACY

2023 has seen a huge expansion at Wansford Pharmacy. Our expanded range of services, both in the NHS and private sector, has yielded incredible results. In our Very Low Calorie Diet Programme we've helped a client achieve over 4 stone weight loss in just 5 months! Our new Sleep Service has started to identify hidden sleep apnoea cases. We have also seen our Pharmacists supporting the Practice with minor illness - you may now be directed to the Pharmacy for your sore throat, cough, allergic reactions, dog bites etc. This service is set to expand next year and frees up time for our doctors' for more complex presentations. The culmination of this work is that we are immensely proud to have been awarded "Pharmacy of the Year" at the GP Awards 2023!



The Joy of Singing– Hereward Harmony need you!

Hereward Harmony, the only male barbershop chorus in Peterborough, is looking for new members and offering a free six- week singing experience. Our group was established over 30 years ago. We currently have 25 loyal members who enjoy singing four-part close harmony whilst building great friendships. Over the years, we have sung at both public and private events. As a group, we learn and perform a wide variety of popular songs such as 'Can you feel the love tonight' by Elton John and 59th Street Bridge Song 'Feeling Groovy' by Simon and Garfunkel.

You will be coached by Rob Yarnell, our talented music director, who will help you to discover which part your voice is suited to : lead, bass, baritone or tenor. You do not need to read music or have previous experience in music to join us. The first part of the evening will be concentrated on developing our new recruits and learning two songs. There will be a break with complementary refreshments, after which participants wishing to will be welcomed to listen to the chorus singing some of our repertoire.

New to singing?

There are many men who would love to sing. Most never get around to it, don't have the opportunity or maybe are too self-conscious to give it a go. The simple fact is that just about every one can sing, and this course will help you to discover your voice.

Have you sung before?

Maybe it is a few years since you have sung. If so, this course is the perfect way to ease your vocal cords back into action. If you are a regular singer, you may find the course useful to learn different voice parts.



The course runs every Thursday from 29th February 2024 - 4th April 2024 at 7:30pm-9:45pm.

At our rehearsal Centre Orton Wistow Community Centre ,Napier Place , Peterborough , PE2 6XN

Don't miss out! Please apply and reserve your place by contacting our chairman Alan Lund: **07850 007057** or **01733 334233**.

For further information on our chorus check out our Facebook account by searching **Hereward Harmony Barbershop Peterborough** or visit www.herewardharmony.com.



Your trusted advisers

We provide individuals and businesses with a full range of accounting, audit, corporate and personal tax planning services.

- Audit and Accountancy
- Business Acquisitions and Disposals
- Business Plans and Projections
- Corporate and Personal Taxation
- Grant Funding
- MT Cloud Accounting
- Payroll, Bookkeeping and VAT
- Tax Planning and Mitigation

For more information,
please contact us:

 **01733 560160**
moorethompson.co.uk

Peterborough | Spalding | Wisbech | Market Deeping



Moore Thompson is registered to carry on audit work in the UK
by the Institute of Chartered Accountants in England and Wales.



WANSFORD PARISH COUNCIL



Wansford Parish Council met on 11 December 2023, 6 councillors were present and two members of the public.

Minutes of previous meeting approved

Nene Close Parking

WPC is continuing discussions with PCC to increase the residence parking spaces.

A47 Dualling.

Whilst Highways contractors have started to carry out preliminary works. The contractors have stated their wish to close the Nene footpath under the A1, WPC wish to see this stay open and are opening a dialogue.

National Highways Designated Social Fund.

WPC are investigating whether this fund which is available due to the A47 improvements can be used for a sound reduction scheme near the flyover.

Peterborough Mayor Donation.

Limited funds are still available at Wansford and King's Cliffe Surgery for those without transport to the surgery, arrangements are made through the Surgery for a relevant Taxi.

Accounts

Planned expenditure was approved.

Peterborough Proposed Local plan

WPC are investigating the City Council's proposals to establish if the proposals will effect the village.

Wansford Grade 1 Stone Bridge and HGV's

WPC held a further multiagency meeting online , and are hopeful that progress is being made to stop HGC's using the bridge. The favourite proposal is to provide width restriction with suitable signage.

Poor mobile phone signal in village.

WPC are trying to press the providers using the restored mobile phone mast to the east of the A1, to improve the signal. The main signals appear to be beamed to the north and south of the village leaving the centre with a poor signal.

Parish Clerk

It is with deep regret that Wansford PC's Parish Clerk Mrs Marie Lewis has resigned for personal health reasons. we wish her well and thank her for her sterling work whilst many structural changes had to be made to our systems and Website. We now have a vacancy for this post. Please apply to Cllr John Stannage at john.stannage@wansford-pc.gov.uk

Cllr Martyn Handley

Would you like to be our Parish Clerk?



Wansford Parish comprises some 211 dwellings north of the River Nene in the Peterborough City Council area. Our Clerk attends monthly meetings in the Community Hall, Peterborough Rd, Wansford starting at 7:30pm, the second Monday of the month, and spends about 5 hours a week, working from home, preparing the Agenda, taking and writing up Minutes, and sending letters and emails. The Clerk is the Responsible Financial Officer and as such is responsible for all financial records of the Parish Council and the careful administration of it's finances. You will be issued with a computer and be required to update the Parish Council's web site regularly. There are seven elected Parish Councillors, who work voluntarily and the Clerk's role is a paid position which is available immediately. The prospective Clerk would serve 6 months' probation and preferably be CILCA qualified. The Parish Council can provide training for a person who does not hold this qualification but is willing to work towards it.

If you are interested in becoming our Clerk or would like to find out more, please contact me anytime and when applying for the position, please send your CV and a covering letter via email to jane.taylor-pitt@wansford-pc.gov.uk

WANSFORD PARISH COUNCIL

Contact Jane Taylor-Pitt

The Old Post Office, Bridge End Wansford PE8 6JH

Phone 07973 933397

Email: jane.taylor-pitt@wansford-pc.gov.uk

SIBSON-CUM-STIBBINGTON PARISH COUNCIL

Thursday 4th January 2023 in the **Christie Hall commencing at 7pm** and as always all resident of the Parish are welcome to attend or raise queries and concerns to the clerk via sibson.cum.stibbington@gmail.com.

THORNHAUGH PARISH COUNCIL

The next Thornhaugh Parish Council Meeting will take place at **7.00 pm on 8th January 2024 in St Andrew's Church.**

The Christie Hall Management Committee
Invites you to the
48th Annual General Meeting
on Thursday 15th February 2024 at 7.30pm
To be held at the Christie Hall, Elton Road, Wanford.
Everyone Welcome.

For further information please contact plewinwatts@gmail.com



FENLAND DISTRICT BROKERS LTD

Your business needs protection at so many levels.
We can advise on full Insurance Coverage.
Local, reliable and experienced.



FOR ALL YOUR BUSINESS INSURANCE NEEDS

0808 175 3050 | 22 Cecil Road, Peterborough | www.fdbltd.co.uk

Fenland District Brokers Ltd are an Appointed Representative of Ten Insurance Service Ltd which is authorised and regulated by Financial Conduct Authority.

Beat the midwinter blues!

Book your next holiday with Kirstie

Here's why...

- She has a wealth of travel experience
- She offers world wide cover, guided tours, cruises and rail journeys
- She can tailor make your ideal package or multicentre itinerary
- She can sell packaged holidays such as Jet2, Kuoni and Easyjet
- She's with you 24/7 for customer support - even when you're on holiday!
- She offers 100% financial protection
- She is friendly and caring

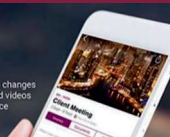
**Why wait? Call 01767 360014 or 07815 814798
or email kirstie.timmins@travelcounsellors.com**

f kirstietimmins

myTC

YOUR ONLINE ACCOUNT
WITH TRAVEL COUNSELLORS

- Simple to use
- Available via Website and App
- Flight Alerts, inc. cancellations and gate changes
- Detailed hotel information inc. maps and videos
- All your travel documentation in one place



**travel
counsellors**

I Said To The Man

As we turn over the page to welcome a new year, like all of us, I wonder what the next twelve months will bring. When I look back over the last year, I am reminded, and not for the first time in my life, of just how the unexpected can change our perspective of the future. Man's ability to upset the apple cart will always bring a few surprises but I never thought on that special evening on the 31st of December, 2022 whilst watching the amazing display of fireworks or the partying and celebrating we did, that two major wars would be unleashed upon the world. Or that so much suffering would be caused by excessive flooding or storms or bush fires together with other natural disasters on such a worldwide scale. We were just coming out of the worst pandemic in living memory. How could 2023 be anything but better than that.

At the outbreak of WW2, I was five years old. It was not until much later in my life that I recognised just how fearful the prospect of the future must have been to my parents and the older generation. Europe was in the hands of a highly oppressive regime, and it seemed only a matter of time before we, on this small island came under the same occupying force. I have excellent memory recall of the time when my father made my two sisters and my mother, gather around the wireless set and listen to King Charles 111 grandfather, George VI speak to the nation. His words, highly applicable then, have just such relevance today as we face a highly uncertain future. Once again there is sabre rattling between the nations and the measures being taken by the world to prevent global warming, must surely be only a token of what is really required in terms of urgent action. Mankind is just as vulnerable now as he was in 1939 and so I think that those fine words which gave us reassurance then and helped us to keep our feet firmly on the ground are just as relevant in today's world as they were then.

I said to the man who stood at the gate of the year, "Give me a light that I may tread safely into the unknown," and he replied, go out into the darkness and put your hand into the hand of God. That shall be to you, better than light and safer than the known way. So, I went forth and finding the hand of God, trod gladly into the night. And he led me toward the hills and the breaking of day in the lone east.

So, heart be still; what need our little human life to know, if God hath comprehension? In all the dizzy strife of things both high and low, God hideth his intention. God knows. His will is best. The stretch of years which wind ahead, so dim to our imperfect vision, are clear to God. Our fears are premature; in him all time hath full provision. Then rest; until God moves to lift the veil from our impatient eyes, when, as the sweeter features of life's stern face we hail, fair beyond all surmise, God's thought around his creatures our minds shall fill - **Minnie Louise Haskins 1875 - 1957**



David B. Johnson

Huntingdonshire District Council Garden Waste Scheme

From April 2024 Huntingdonshire District Council will be introducing a garden waste subscription service. Residents are now able to start signing up for the service and HDC will be offering an Early Bird discount to residents who sign up before the end of January 2024.

This discount will see residents pay £50 for the year instead of £57.50. More information is available on the Huntingdonshire Council website.



Early Bird Discount

NOW AVAILABLE

SIGN UP BY
31st JANUARY 2024

Join the NEW
GARDEN WASTE
Subscription Service

HDC

It's Friday – Game on!

From Friday 26 January

Come along to Nassington Village Hall for a fun afternoon of table top games such as Scrabble, Rumikub and Canasta. Play one of ours or bring your own!

Admission £2 including Refreshments

EVERYONE WELCOME!

Game on!

Nassington Village Hall PE8 6QG

The last Friday of the month 2 - 5pm



Local Housekeeper / Cleaning Lady

- Long term customer references ✓
- Exceptionally high standards ✓
- DBS registered ✓
- Ofsted registered Nanny / Housekeeper ✓

Telephone: 07741 468392

Woodland Timber Products

Fencing, Play Houses, Gates
Pet Housing, Sheds



01780
783983



Unit 4, Leedsgate Farm Business Park.
Kings Cliffe Road. Wansford PE8 6NX.
07748 787360
woodlandtimber.products@yahoo.com

NEWS FROM WANSFORD AND KINGS CLIFFE PRACTICE

Wansford and Kings Cliffe Practice has seen a busy and exciting year. Our list size has increased to more than 10,000 patients and our practice team has expanded accordingly with 7 Doctors, Paramedics, Advanced Nurse Practitioners, a Diabetes Nurse, a Cardiology Nurse, a Respiratory Nurse and a GP Assistant, Pharmacists and Pharmacy Technicians. Wansford Research has been extremely active – over the last year we've been involved in a study involving the Omicron Booster Vaccine and the new Respiratory Syncytial Virus (which causes the common cold in most but can be deadly in the young and the old) Vaccine which has now been licenced in the UK. We are also involved in 2 studies for powerful new cholesterol lowering drugs. We had a visit from Craig Revel Horwood in March to help celebrate 70 years of The Royal College of GPs and we have topped the year off with a major collection of toys donated by staff and patients for Barnardo's and a Santa Fun Run to support Sue Ryder and Mindspace Stamford.

We wish you all a Happy Christmas and a Healthy New Year!



Just ask

Making the right decisions can be stressful at the best of times, but we are here to help. Whatever's on your mind, just ask.

TOBIAS COLTON BA(Hons) DipPFS
Principal
TOBIAS COLTON WEALTH MANAGEMENT
Associate Partner Practice of St. James's Place Wealth Management
07468 428 380
tobias.colton@sjpp.co.uk
www.tobiascoltonwealthmanagement.co.uk

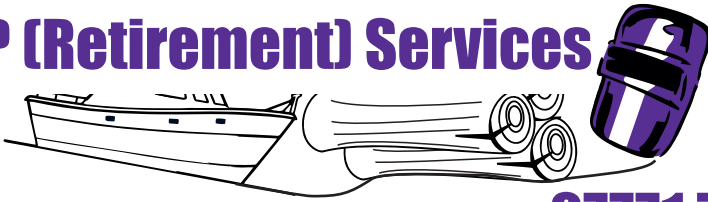



ST. JAMES'S PLACE
WEALTH MANAGEMENT

The Partner Practice is an Appointed Representative of and represents only St. James's Place Wealth Management plc (which is authorised and regulated by the Financial Conduct Authority) for the purpose of advising solely on the group's wealth management products and services, more details of which are set out on the group's website www.sjp.co.uk/products. The 'St. James's Place Partnership' and the titles 'Partner' and 'Partner Practice' are marketing terms used to describe St. James's Place representatives.

SJP12026 V1 (04/20)

GP (Retirement) Services



Call Glen anytime on 07771 784643

Boat Hire on The River Nene

Day/Weekend/Long term hire

Gilly fishing trips (full kit available)



Local Fabrication and Site Welding

Repairs or New Builds

Gates/Fences/Farm Machinery

Any job never too small



Local Log Delivery



All logs cut to order

Mobile logging service

Mobile log splitting service

Dead tree felling service

Wansford Horticultural & Craft Society

It's been a year of highs and lows that have taken our Society to the brink of financial disaster and back again. The notes from the AGM give the context and the footnote from the AGM summarises why we are so lucky to have our Society and its lovely members.

Chairs (Gary Punter) note to AGM. 9th Dec 2023

Dear members

2023 has been both a year of great moments and a very stressful finish. Some really great events, learning points for a few more, organising a Show (when not going to be there and trusting in a great Show team) and then an act of theft that has caused more than just financial stress and has taken us to the brink of losing the Society.

On a bigger level, at 160 members we are the largest such club in the area. We are still adjusting to a post covid world where 'what interests you guys?' continues to evolve:

- ♥ We sold out our workshops (crotchet with Elin & flower arrangements with Tanya)
- ♥ We sold out our local 'privileged access' visits to Blatherwycke & Burghley
- ♥ Helping children plant seeds at Sacrewell was well attended – Thank You
- ♥ Plant and bulb sales were popular again, both buyers and contributors, thank you.
- ♥ We sold out our summer social BBQ extravaganza at Barry & Mandy's Garden with music by WUF. What a magnificent quintessential summer social.
- ♥ The Wansford Show, despite the weather, was again great fun and made a profit (albeit stolen generator has dashed our hopes somewhat). We had the help of 72 volunteers which is stunning.
- ♥ We sold out our high-profile Bunny Guinness talk.
- ? Less popular were our other evening talks (perhaps subjects do not resonate to get you out on a dark evening on the roads?)
- ? Coach trip to Wisley (whilst cancelled the day before due to high winds) was poorly subscribed (perhaps we do not like given up a whole day of our busy time)
- ? Entries into the Show marquee dipped to just 15 people from our society, out of a total of 39 (including 11 children). It has been suggested to me that time constraints and not wanting to be judged are issues. We tripled our promotional activity this year to no avail and it's a lot of work to judge, steward and organise.

For the 2024 events schedule (to be confirmed in January) there will be more of a focus on: local visits/talks where we can get privileged access; plant sales; workshops to learn new skills and our summer/winter socials. Ideas are welcome. In addition, we have felt for a long time that the Wansford Show is a big burden for our Society alone to organise and fund. Therefore for 2024, we are establishing a separate independent organisation to be formed in the village to run this event. The Horticultural Society will continue to be a supporting organisation, but the Show will be free to evolve with broader input.

In a normal year, the above news would be big indeed, but we are also facing a financial and resourcing crunch.

- Getting back from our son's wedding to find that the Show generator stolen was not great and has turned into a big financial issue, which we have only just resolved. Unfortunately, we were not insured and even had we been, we would not have received a pay-out, due to leaving the generator in a field, albeit with many locks. The initial claim from the hire company greatly exceeded our bank balance funds. Our constitution does not cater for such a situation. We have negotiated down to £12,000, which leaves us enough to continue as a Society. This has just been accepted. This theft has caused a lot of stress and many learning points. Fortunately, Quentin had advised us to build a rainy-day fund, but we did not expect a tsunami!
- Secondly, the events schedule takes a lot of organising for just 6 committee members. If we lose another member, we will struggle. Removing the Show will help. On a positive note, it is very rewarding to organise social events and spend time with our members and enjoying our shared passion for gardening & crafting. We are likely to need a Treasurer plus 1 event's organiser.

Please be patient with us as we enter 2024, as we get both the Show and Society back on their feet. Also, apologies for so much of our funds slipping away.

It certainly is an eventful time and I always look for the positive opportunities that come from adversity and see things through with a smile 😊. For 2024 we hope for the Show to get a fresh start and for our Society events to chime with your interests and continue to positively support (...and for more organisational help on achieving both).

	Officers	Committee Members
Chairman	Gary Punter	Quentin Arnold
Treasurer	VACANCY	VACANCY
Secretary	Rhona Punter	Liz Harris
		Ian Wright
		Mandy Veni

Footnote from AGM – How did the AGM go ?



A huge thank you to the 40+ who attended the winter social and AGM.

The instantaneous feedback & appreciation of our hard work at the AGM means so much to us on the committee and especially your kind words for Quentin, its been a tough year, great highs & lows.

Given our financial woes, there was a motion proposed by the floor (and passed) that members should consider a small £amount (£2, or £5) on top of the £5 subs which will be due in January. Times are tough and please do see this as entirely discretionary - and thank you for this gesture of generosity. Subs and 2024 events will be notified by end January.

Finally, we asked each table at the AGM to summarise what we love about our society. These are in full below as they summarise the values that we hold so dear **'gardening, having fun and socialising with nice people'**

Have a lovely Christmas with your loved ones !

Gary

On behalf of Quentin, Rhona, Ian, Mandy & Liz

PS Why we love the Horticultural Society – feedback from AGM

Trips out,	open gardens	garden visits	gardening tips
private garden visits	horticulture and craft workshops	Quentin Arnold	it's organised well
friendship	generosity	summer party	social/food events
social/food events	summer social	very welcoming	Christmas meal
good company	Xmas & Summer socials		GREAT EVENTS



Georgina's

Curtains & Keepsakes

Covering all the Villages
Stamford to Stibbington
(and everywhere inbetween!)







Bespoke handmade curtains, roman blinds and soft furnishings to complement your home.
 For a free consultation and quote call 07957 686595
www.georginascurtainsandkeepsakes.com

PETER RIDDINGTON LANDSCAPING

We supply and install Patios & Pathways, Decking, Stone Walls and Fencing,
 We plant Trees, Shrubs Hedges and Flowers, and offer a complete Garden
 Maintenance and Improvement Service. Garden design service provided
 Contact Peter Riddington today for a free quotation

4 LOCKS GREEN, YARWELL, PETERBOROUGH PE8 6PY
 Telephone: 01780 783004 Mobile: 07860 962068
 Email: peter@peteriddington.co.uk



DIRECTORY OF CONTACTS

For all enquiries, contributions and adverts

Craig Bunday	craig@ascotgraphics.co.uk	07771 538661
Ascot accounts	accounts@ascotgraphics.co.uk	01487 801301

Parish Councils

Sutton	Deirdre McCumiskey (Clerk)	01780 782668
Wansford	Marie Lewis (Clerk)	07899 732049
Sibson-cum-Stibbington	Charlotte Newman - sibson.cum.stibbington@gmail.com	
Thornhaugh	Deirdre McCumiskey (Clerk)	01780 782668
Water Newton (Parish Meeting)	Caroline Nathan (Chairman)	07989 362514

City Councillor (Wittering Ward) - Gavin Elsey **07738930599**

Churches

Ministers: Thornhaugh & Wansford	01780 782271
Stibbington, Sutton, Castor & Water Newton	01733 380900
admin.castor@btconnect.com	

Churchwardens:

St Andrew's Thornhaugh:	Stuart Foreman	01780 783220
	Liz Kemp	01780 782333
St Mary's Wansford:	Caroline Ashley	01780 782408
	Alan Jones	01780 783205
St John the Baptist, Stibbington	Charlotte Bradshaw	01780 781805

Friends:

St Mary's & St Andrew's	Caroline Ashley	01780 782408
St Remigius Water Newton	Jack Ward	01733 394646

Other useful contacts

Neighbourhood Policing	101	P'boro City Council	01733 747474
Wansford Surgery	01780 782342	Royal British Legion	01780 782200
(Out of hours	111 option 4)	Stibbington & Wansford WI .	.781733
Wansford Pharmacy	01780 781616	Cricket Club	07860 278800
Communicare	01780 470437	Horticultural Society	01780 592514
H'don District Council	01480 388388	Stibbington Centre	01780 782386

Website **www.livingvillagesmagazine.co.uk**

©2023 Living Villages Magazine The contents of this magazine may not be copied, reproduced, distributed, republished, downloaded, displayed, posted or transmitted in any form or by any means without the prior written permission of Living Villages Magazine. You may not distribute, display or copy any of the contents of the pages contained in this magazine to third parties without the prior written permission of Living Villages Magazine. All images shown in this magazine are the property of Living Villages Magazine unless otherwise accredited to another. Images may not be used without the prior written permission of Living Villages Magazine or the accredited owner. Unless otherwise specified, the authors of the literary and artistic works in the pages in this magazine have asserted their moral right pursuant to Section 77 of the Copyright Designs and Patents Act 1988 to be identified as the author of those works. If permission is sort and given, it is expected that all articles/images be accredited to either Living Villages Magazine or the author of said articles/images. The views expressed in articles published are strictly those of the writer, and not of Living Villages. Living Villages cannot vouch for products and services advertised, nor accept any liability resulting from the purchasing of product or services, although care is taken to ensure their suitability.

NEED A LOCAL PLUMBER?

PlumbCall Plumbing & heating
Same day / next day service!

- Gas, Electric, Oil, LPG & Solar
- Central heating: Full design & installation
- High efficiency boilers
- Boiler / combi replacements
- Central heating, boiler breakdown & plumbing aftercare
- Underfloor heating specialist
- Power flushing
- Landlord certificates
- Free estimating service
- Annual servicing
- All work guaranteed
- OFTEC Registered

12 year manufacturer's guarantee on selected boilers
(Terms & Conditions apply)

CALL US TODAY!

01733 243 047

or 07860 257 803

E: advice@plumb-call.co.uk

W: www.plumb-call.co.uk

Gas Safe Register No.8494
LPG Registered



*subject to acceptance terms and conditions apply



NORTON RICKETT

Local *Independent* Estate Agents

- Free Market Appraisals
- Probate Valuations (RICS Surveyor)
- Local – Office near Wansford
- Established & Trusted since 2012
- Advertising on Rightmove
- Office Presence in London



www.nortonrickett.co.uk

01780 782 999



Crown

Property Services

- 👑 Electrical & Plumbing
- 👑 Kitchens & Bathrooms
- 👑 Renovations
- 👑 Extensions
- 👑 Windows & Doors
- 👑 Groundworks
- 👑 Landscaping
- 👑 Internal Refurbishment

Old Sulehay Cottages, Sulehay Road, Wansford. PE8 6PA

07766 168659

jonathon@hibbins.me

Village Pizzas

Open Tue – Sat for
Collection / Eat-In at
Leedsgate Farm
4.30pm – 10pm

Or
Delivery 6pm till 10pm

**01780
784587**

View our Menu at
www.villagepizzas.co.uk



Mat based Pilates and Chairiobics
Classes for all levels

MAT BASED PILATES

1 hr classes

Online on Zoom, or in person at
Christie Village Hall (Wansford) and Harringworth Village Hall

Monday, Tuesday, Wednesday and Thursday
£3.50 online / £6 in person



Ease back pain
Strengthen your core, abs and back
Improve sports performance
Exercise without joint pain
Increase your flexibility
Boost brain power and focus

Christie Village Hall:
18:00 Monday /
12:30 Wednesday / 18:00 Thursday
Online:
16:45 Monday / 11:30 Thursday
11:00 & 12:30 Tuesday

Justine

BROMAGE FITNESS

Justine Bromage
Fully Qualified Level 3 Pilates Instructor
Level 3 Personal Trainer
RSA to Music Instructor

justwhim@hotmail.com

07919 106156



**Greenwood
homecare**

Do you need care visits at home?

Greenwood Homecare
provides quality care
in Peterborough and
the surrounding areas

✓ FREE ASSESSMENT

📍 DAY, LIVE-IN OR NIGHT
CARE AVAILABLE

FOR MORE INFORMATION

Visit: Greenwoodhomecare.co.uk

Email: Peterborough@greenwoodhomecare.co.uk

Call: **01733 808531**

