

# *Living Villages*

February 2024

*Water Newton Thornhaugh  
Stibbington Sutton Wansford*

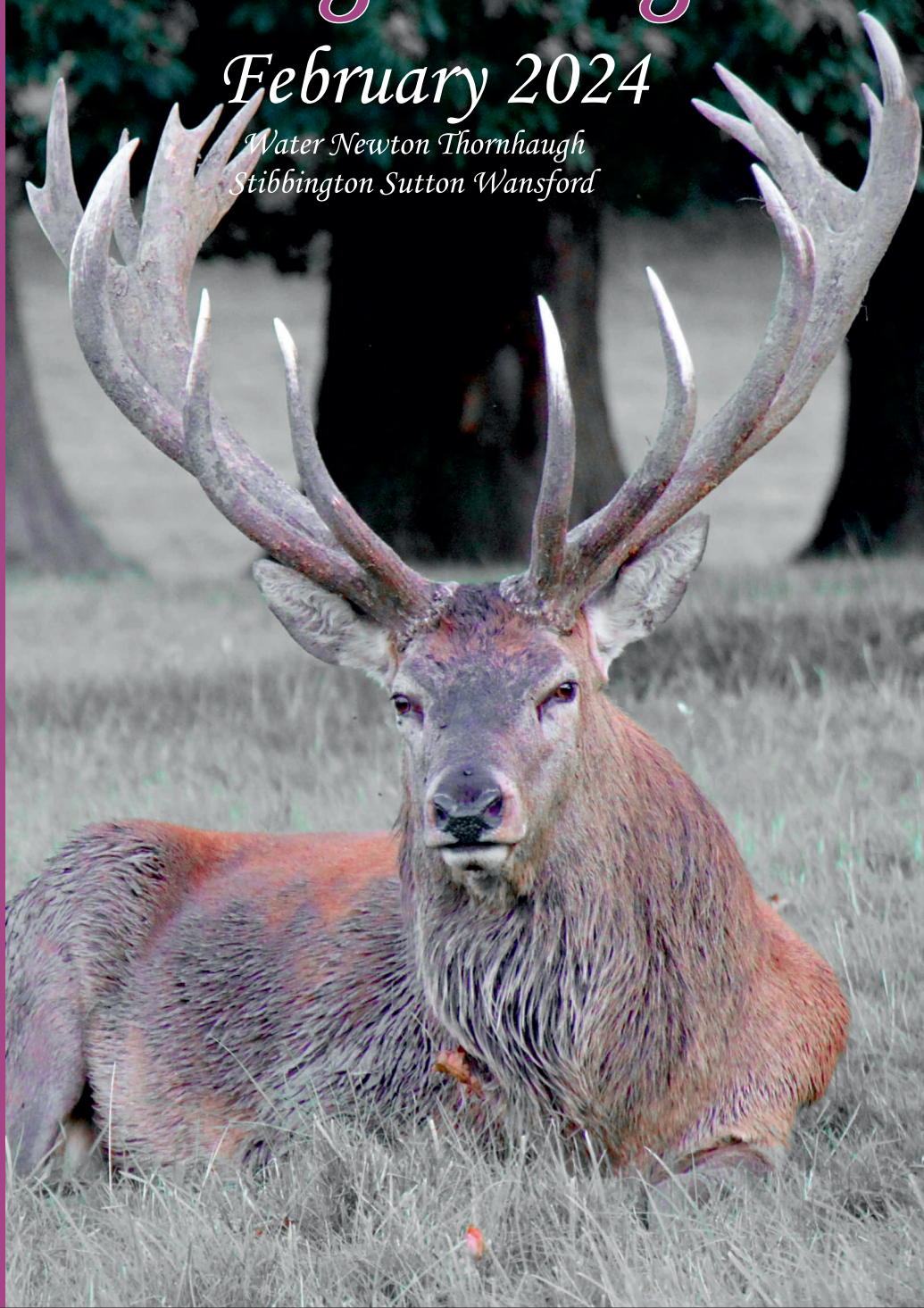


Image taken by John Measures

Call us today to book your  
free appointment

# Heritage Wills

Peace of mind when you need it most



Will Writing



Client Care  
Package



Lasting Power  
of Attorney



Agricultural  
Property Relief



Trusts



Corporate  
Benefit Package



Property  
Protection Trusts



Tennants in  
Common



Probate Services



Property  
Title Change

01480 465855 | [heritagewills.co.uk](http://heritagewills.co.uk)

HLC Business Centre, 5 The Quay, St Ives,  
Cambridgeshire, PE27 5AR



## Editorial

Dear readers

I marvel at some of the cover photographs from John Measures - the patience that must be needed to capture that perfect picture, or is it just chance, or taking the opportunity? Whatever the circumstances, the beautiful image of a Red Deer stag taken at Woburn Abbey deer park for this month's cover is yet another example.

Elswhere in this month's Living Villages, there are calls to occupy vacancies in this month's edition - Wansford Parish Council are still looking for a Clerk (Page 17) and volunteers are needed for an Independent Schools Panel for school selection reviews (page 14). Would you like to get involved? Also, you will have noticed images in some of the corners and pages this month - these are just a few of the wonderful Advent Windows that appeared around Wansford in December, and we hope you enjoy seeing them again!

As usual, my thanks to all other contributors and regulars in the magazine, plus there is another thoughtful piece from David B. Johnson on page 20, and news from the **Wansford and Kings Cliffe Medical Practice and Pharmacy**, and finally see below for details on what promises to be an interesting talk on the subject of Lady Jane Grey and her sisters at Yarwell Church in April.

Best wishes

Craig

### Contents

- 6 Worship & Benefices
- 10 Stibbington and Wansford W.I.
- 16 Parish Council Notices and Minutes
- 23 Horticultural Society
- 26 Contacts

### Woodland Timber Products

Fencing, Play Houses, Gates  
Pet Housing, Sheds



01780  
783983



Unit 4, Leedsgate Farm Business Park.  
Kings Cliffe Road, Wansford PE8 6NX.  
07748 787360  
[woodlandtimber.products@yahoo.com](mailto:woodlandtimber.products@yahoo.com)



### Lady Jane Grey and Her Sisters

A talk by Anne Feather  
about the "Nine Day Queen" and her sisters.

**YARWELL CHURCH 12<sup>th</sup> APRIL 7.00 p.m.**

**Tickets £7.50 to include a drink and refreshments.**

**Contact Revd. Jane Tailby 01780 782271**





# LAUREN BAILEY

## AESTHETICS

**Our treatments include:**

- Skin Boosters - Prophilos, Seventy Hyal, Lumi Eyes, Sunekos & Jalupro
- Advanced Anti Wrinkle Injections
- Treatment of Excessive Sweating
- Fat Dissolving
- Lip Enhancement
- Chemical Peels
- Vitamin Injections
- Dermal Fillers
- Micro-Needling
- PDO Threads

Scan QR Code to book



Find us on   laurenbaileyaesthetics

**COVERING WANSFORD, STAMFORD & PETERBOROUGH**



Dry carpet cleaning and upholstery cleaning services in Peterborough and the surrounding areas.

Whether you have an individual chair or carpet in a domestic property, or are interested in contract carpet cleaning in your business, you can benefit from our 35 years experience.

Telephone: **01832 280429**

Mobile: **07951 124374**

Email: **info@bcnmulticlean.co.uk**

## GRIFFIN

**Solid Fuel Merchant  
Supplier of Pre Packs**

**Coal Bunkers   Charcoal   Compost  
Flo Gas   Logs & Sticks   Salt**

**Coal Yard  
Station Road  
Nassington  
01780 782540**

**Office  
12 Church Hill  
Castor  
01733 380470**

## BARKLEYS GARDEN SERVICES

**Your LOCAL Gardening Team**

**Regular garden maintenance  
Lawn care and mowing  
Hedge trimming**

**Lady gardener available**

**Get in touch by calling**

**Bev - 07593 721144**

**Peter - 07747 502471**

**beverleybarkley1@gmail.com**



# NEED A RECOMMENDATION?

The **ONLY** Police Checked  
recommended register of  
local approved traders



**FREE and EASY service**

**safelocaltrades.com**

★★★★★

**Recommended & Approved**



*Much more than just a recommendation ...*

## Serving the PE Postcode community since 2008

*Over 70 different trade categories and over 17,500 reviews*

Here are some of our members ...

**New Garage Door & Repairs**



**GARAGE DOOR &  
SHUTTER SERVICES**

[www.garagedoorandshutterservices.co.uk](http://www.garagedoorandshutterservices.co.uk)

Call Dave on

**07709 337647**

**Electrician**

**OLD COURT  
ELECTRICAL**

[www.oldcourtelectrical.co.uk](http://www.oldcourtelectrical.co.uk)

Call David on

**07973 507420**

**Loft Insulation & Boarding,  
Cavity Wall Insulation**



**A TO Z  
ENERGY SOLUTIONS**

[www.atoz-energy.co.uk](http://www.atoz-energy.co.uk)

Call Leanne on

**07878 314562**

**Building & Carpentry Services**



**Steve Deprez & Son**  
Building • Brickwork • Carpentry

*Preserving the past, Building the future*

[stevedeprezbuilders@gmail.com](mailto:stevedeprezbuilders@gmail.com)

Call Steve on

**07414 292188**

**Gutter Cleaning & Repairs**

**THE  
GUTTER CLEAN  
COMPANY**

[www.guttercleancompany.com](http://www.guttercleancompany.com)

Call Jeremy on

**0800 179 9363**

**Roofing Specialist. Fascias,  
Soffits & Guttering**

**Synergy  
Roofing**

[www.synergypoofing.co.uk](http://www.synergypoofing.co.uk)

Call Simon on

**01733 711711**

**Kitchens & Bathrooms**

**APG BATHROOMS**

[www.apghomeimprovements.co.uk](http://www.apghomeimprovements.co.uk)

Call Aaron on

**01733 568651**

**Thousands of Reviews**



**Keeping  
it Local**

**in association with ...**



**Neighbourhood and  
Home Watch**  
Looking out for the community

**Cambridgeshire  
& Peterborough  
ageUK**



**CAMBRIDGESHIRE AND PETERBOROUGH  
AGAINST SCAMS PARTNERSHIP**

To see our full list of members and read all reviews just go to ...



**www.safelocaltrades.com**



**0800 014 1832**



The safest way to source local traders

**Tear out page and keep**

# WORSHIP DATES

Every Sunday 5.00pm - Zoom 'At Home' Service. Log in and phone details from Rev. Jane [jdailby@aol.com](mailto:jdailby@aol.com) 01780 782271

## 14<sup>th</sup> February ASH WEDNESDAY

**10.00 am**

**BENEFICE HOLY  
COMMUNION WITH ASHING**

**WANSFORD**

St. Leonard's, Apethorpe

4 <sup>th</sup>	11.00 a.m.	Holy Communion
18 <sup>th</sup>	11.00 a.m.	Holy Communion

St. Mary's and All Saints, Nassington

Every Thursday 9.30 a.m. Holy Communion BCP

4 <sup>th</sup>	8.15 a.m.	Holy Communion BCP
4 <sup>th</sup>	9.30 a.m.	Morning Prayer
11 <sup>th</sup>	9.30 a.m.	Holy Communion
18 <sup>th</sup>	3.00 p.m.	Craft Service
25 <sup>th</sup>	9.30 a.m.	Holy Communion

St. Andrew's, Thornhaugh

4 <sup>th</sup>	9.30 a.m.	Morning Prayer
18 <sup>th</sup>	9.30 a.m.	Holy Communion

St. Mary's, Wansford

Every Wednesday 10.00 a.m. Morning Prayer

11 <sup>th</sup>	9.30 a.m.	Holy Communion
14 <sup>th</sup>	10.00 a.m.	<b>ASH WEDNESDAY HOLY COMMUNION</b>
25 <sup>th</sup>	9.30 a.m.	Holy Communion

St. Mary's, Woodnewton

4 <sup>th</sup>	9.30 a.m.	Holy Communion
18 <sup>th</sup>	9.30 a.m.	Holy Communion
25 <sup>th</sup>	8.30 a.m.	Holy Communion BCP

St. Mary Magdalene's, Yarwell

11 <sup>th</sup>	11.00 a.m.	Holy Communion
18 <sup>th</sup>	3.00 p.m.	Methodist Service
25 <sup>th</sup>	11.00 a.m.	Holy Communion

"A move-able feast" – well, that certainly describes the date of Easter, dependent as it is on a complicated calculation that involves the first full moon that follows the spring equinox. This year, Easter is quite early, 31st March, so that means that the seven weeks of Lent begin in mid-February. We have our usual Ash Wednesday service at 10 am on 14th February at Wansford (a significant date for another reason as well, of course, and appropriate as we reflect upon God's love for us shown in the self-giving of Jesus as we celebrate human love that day).

As part of our Ash Wednesday service we have the opportunity to receive the sign of the cross in ash on our foreheads as a sign of our wish to begin again, to turn back to the love of God. In some larger towns and cities churches will go out into the streets and offer "ashing" to passers-by. They may not always understand the full significance of the sign, but for many of us, a physical action helps us to reflect upon what is going on inside us.

We also have Lent groups that can mark the season, this year meeting on Thursday afternoons in Wansford, and on Zoom one evening each week. Do get in touch if you'd like to join us, maybe for the first time – you'd be most welcome! We will be using material produced by the Church of England focusing on stillness, watchfulness and "tarrying" – a practice drawn from Black Spirituality. All of these can be ways of finding a new start or a sense of renewal.

February is certainly a month to be looking out for signs of new life in so many ways as we look towards that spring equinox and the coming of warmer, lighter months. You'll know by now that I always look out for the snowdrops particularly, as well as our other spring flowers that lift our spirits at this time of year. We all need signs of hope to encourage us and keep us going, particularly in such challenging times. May we be signs of hope for those around us, not dependent upon specific dates or seasons, but upon the needs of those around us.

With every blessing,

*Rev. Jane*

## REFLECTIONS

## CASTOR BENEFICE

We are still maintaining the following service pattern every Sunday in each of our **Parish churches** until further notice.

**Marholm** 9.00am - Holy Communion (Morning Prayer on 4th Sunday)

**Castor** 8.00am Holy Communion (said service) 10.15am - Sung Eucharist

**Sutton** 9.00am on 4th Sunday of the month - Holy Communion

Every **Wednesday** morning at **10am** there is a service of Holy Communion at **Castor**.

We still continue to celebrate **Evensong via Zoom at 6pm every Sunday**, if you wish to join us please contact the Benefice office for the Zoom link and access code.

[admin.castor@btconnect.com](mailto:admin.castor@btconnect.com)

The next service at St. John the Baptist, Stibbington will be **Pancake Sunday on the 11th of February at 4pm**, see separate poster.

**David Ridgeway**

## ST. JOHN THE BAPTIST STIBBINGTON

**OUR NEXT SERVICE  
WILL TAKE PLACE ON**

**SUNDAY 11 FEBRUARY AT 4.00 pm**

**PANCAKE SUNDAY**



**Do come and join us, you will be  
assured of a VERY warm welcome**



**jc.heating**  
SERVICES

Oil boiler servicing and  
repairs, heating controls,  
hot water service and repairs.

Your local heating expert for  
over 15 years.

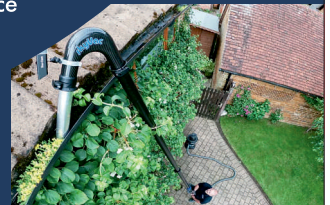
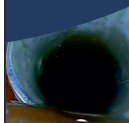
Jo Childs,  
8 Black Swan Spinney,  
Wansford.

**Mob : 07729036942**

## Perfect Drainage Solutions

Your Drainage Experts (est 2023)

Gutter Cleaning  
CCTV Drainage  
High Pressure Water Jetting  
Drain Blockage Clearance  
Tanker Service  
Repairs



**07817723610**

**info@pds ltd.co.uk**

**www.perfectdrainagesolutions.co.uk**



## THE SPECIALISTS IN HEALTH CARE



### Podiatry & Chiropody

Nail Surgery For Ingrown Nails,  
Biomechanics & Orthotics, Diabetic Foot Care, Verrucae, Corns,  
Cracked Heels, Calluses, Hard Skin, Nail Reconstruction

Now  
Accepting  
New  
Patients!



### Ear Wax Microsuction

**Ear Ache? Hearing Loss? Blocked Ears? Pre Hearing Test Clean?**  
It could just be wax! Safe, Gentle and Effective Ear Wax Removal



### CryoAesthetics for Skin Lesions

Skin tags, Freckles, Age/Liver Spots, Milia, Fibroma,  
Seborrheic Keratosis Solar Lentigo, Cherry Angiomas,  
Verrucae and warts, Popular nevi (moles, birthmarks)

**You can self refer to us for immediate treatment**

**Home Visits Available**

### Sue Arnold BSc(Hons) MRCPod & Associates

InStep Foot Clinic, 19 Elton Road, Wansford PE8 6JD

**Tel: 01780 782200**    [wansfordinstep@gmail.com](mailto:wansfordinstep@gmail.com)

## Castor Lodge Care Home

### Our family, caring for yours

At Castor Lodge, our care is the kind we would want all of our loved ones to receive. Offering residential and dementia care, our dedicated team make life comfortable and enjoyable for all our residents, allowing them to live safely and as they choose. Our brand new home is luxurious and beautifully furnished, whilst retaining a warm family atmosphere that makes Castor Lodge feel extra special.

- 68 Spacious en-suite bedrooms
- 6 Premium self-contained suites
- Bistro Café and themed pub
- Sociable lounge and dining areas

To find out more about life at Castor Lodge contact our Customer Relations Manager Laura Mills on 07725 799 217 or email [laura.mills@countrycourtcare.com](mailto:laura.mills@countrycourtcare.com)



01733 823 163



Splash Lane, Castor, Peterborough, PE5 7BD



[www.countrycourtcare.com](http://www.countrycourtcare.com)



Our family, caring for yours



## The Friends of St Mary's and St Andrew's

Despite the cold weather, there were plenty of brave souls who enjoyed January's Coffee Stop.

There will be a February Coffee Stop on **Wednesday 21st February at 10.30am** in St Mary's church, after Morning Prayer.

**Caroline Ashley**



### THE ARTS SOCIETY PETERBOROUGH

The Arts Society is a leading arts education organisation that brings people together through a shared curiosity for the arts. Each year The Arts Society Peterborough (TASP) holds nine illustrated talks given by experts in their field on subjects ranging widely, including old Masters, modern sculpture, silver jewellery, the work of David Hockney and music in art. The talks are held at

The Fleet in Fletton Peterborough on the second Thursday of each month except June, July and August. The talks start at 10.45 am but you are welcome to come earlier and meet like-minded people for a chat over a cup of coffee, doors open at 10.15am. Non-members are always welcome, so come and join us!

In addition to the live talks, annual members also receive other benefits. If you wish to find out more about our Society or about becoming a member, please visit our website, [www.the-arts-society-peterborough.org.uk](http://www.the-arts-society-peterborough.org.uk). Our next two talks are:..

#### 8th FEBRUARY 2024

##### 'Secret Art in The Passport', by Martin Lloyd

From the wax seal to the microchip, man has exploited the skill of an artist in his attempt to manufacture a forgery-proof document.

#### 14th March 2024

##### 'London's Last Departmental Stores', by Tessa Boase

London's sumptuous Victorian and Edwardian stores changed the capital and changed its women. Find out more of the temptations in these new cathedrals of desire.

## WANSFORD COMMUNITY HALL

Peterborough Road, Wansford

This hall accommodates parties of up to 36 people seated. Ideal for Meetings, Workshops, Aerobics etc

GREAT VALUE AT ONLY £4 per hour  
FOR BOOKINGS TELEPHONE  
clerk@wansford-pc.gov.uk

Capitol Lettours



Your local property agent

With over 30 years of  
experience

Relocation, Lettings and Sales

Please call our office for a  
competitive quote

Peterborough - 01733 553366

(enquiries@capitollettours.com)

[www.capitollettours.com](http://www.capitollettours.com)

## STIBBINGTON & WANSFORD WI

### Today's women working for tomorrow's world

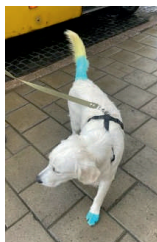
theWI  
INSPIRING WOMEN



In January we were delighted to welcome one of our members, Jan Armitage, to tell us about her amazing adventure to Ukraine. Early in 2023 Peterborough Cathedral had been contacted for support by Paul Parsons (Towcester). Paul was organising deliveries of trucks loaded with medical and other supplies to Ukraine. Jan was the first female to offer her services as a driver to this group. At the beginning of July, Jan was contacted that a vehicle available and that they would welcome Jan and her husband, St. Clair, to accompany them on the 6 day trip. The trucks are bought

at auction and filled with medical supplies, either purchased new or out of date ones acquired from the NHS. Five vehicles set off from Towcester in August for their 1,300 mile journey.

At the Polish/Ukrainian border they were met by a Ukrainian man, who works with Paul in Towcester, and had flown out to assist with the paperwork in getting the trucks along with their drivers across the border and into Lviv.

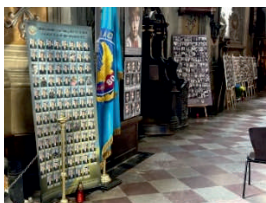


On arrival the trucks and their contents were blessed by a Greek

Orthodox priest. First of all, the tourniquets were taken to go to the hospitals, and then the other medical supplies were offloaded and distributed to brigades. The empty vehicles were left for the Ukrainians to use. As the trucks are right hand drive a dummy is placed in the front passenger seat so that the unsuspecting Russian forces would fire at the dummy instead of the driver. The vehicle which Jan and St. Clair drove was taken on to Crimea. All the volunteers were presented with a Ukrainian flag which contained a handwritten message of thanks. Jan and her fellow drivers met survivors and witnesses who told them of their experiences. Then, they were taken to meet ladies who were making camouflage nets. They are handmade because this type of net is not detected by drones. They made camouflage for helmets as well and decorated them with a peace dove and yellow and blue wool.

They visited a cemetery which was the size of 5 football pitches. Every grave was decorated with items that depicted the interests of the soldiers. It was during this visit that Jan was most frightened as they experienced an air raid warning.

This was one of 5 trips made by Paul and his volunteers in 2023. £325,000 was raised to buy trucks, fuel and supplies.







Stibbington & Wansford W.I. are very proud to have Jan as one of our members.

Over Autumn and winter we will be meeting in Wansford Community Hall, if you wish to attend one of our upcoming meetings to hear one of our visiting speakers, please get in touch. Please see below for our upcoming events:

**Tuesday 12th February 2024 W.I. meeting 7pm**, Community Fundraiser, Sue Ryder Thorpe Hall. Speaker Zoe Noyes. At Wansford Community Hall

**Tuesday 6th & 20th February 2024, 2-4pm** Coffee & Craft club, at Wansford Community Hall

**Tuesday 5th & 19th March 2024, 2-4pm** Coffee & Craft club, at Wansford Community Hall

**Thursday 28th March 2024, 7.30pm** Book Club meeting, at The Cross Keys Wansford.

Both the Coffee & Craft club, and Book Club are open to all, (not just for WI members) and we look forward to others joining us.

Rhona Punter, email - [rhonapunter@aol.com](mailto:rhonapunter@aol.com)



**Georgina's**  
Curtains & Keepsakes

**Covering all the Villages**  
Stamford to Stibbington  
(and everywhere inbetween!)



Bespoke handmade curtains, roman blinds and soft furnishings to complement your home.

For a free consultation and quote call 07957 686595

[www.georginascurtainsandkeepsakes.com](http://www.georginascurtainsandkeepsakes.com)

## PETER RIDDINGTON LANDSCAPING

We supply and install Patios & Pathways, Decking, Stone Walls and Fencing, We plant Trees, Shrubs Hedges and Flowers, and offer a complete Garden Maintenance and Improvement Service. Garden design service provided

Contact Peter Riddington today for a free quotation

4 LOCKS GREEN, YARWELL, PETERBOROUGH PE8 6PY  
Telephone: 01780 783004 Mobile: 07860 962068  
Email: [peter@peteriddington.co.uk](mailto:peter@peteriddington.co.uk)





# H HEARTYS of Peterborough

Car buying made easy with over 30 vehicle manufacturers on site and 200+ cars in stock

Fantastic part exchange prices offered with fully comprehensive warranty on all purchases

*Peace of mind motoring for over 50 years*  
[www.heartysofpeterborough.co.uk](http://www.heartysofpeterborough.co.uk)

01733 560605  
 Unit 10 Flaxley Road,  
 Peterborough, PE2 9FT

**THE CHRISTIE HALL**  
 Elton Road, Wansford  
 (registered charity no 1033998)

A well-equipped hall  
 with large kitchen and parking.  
**Available for parties, receptions,  
 meetings, activity groups  
 and most types of private functions**  
 For more information and details on how to book  
 visit our website  
[www.christiehall.co.uk](http://www.christiehall.co.uk)

\*\*\*\*\*  
**MOBILE HAIRDRESSING**  
 Ladies & gents hairdresser with over 30 years experience. ✂  
 If you are housebound, have reduced mobility, no transport or simply prefer the convenience of having your hair done at home, I have daytime appointments available. Fully insured. Competitive prices.  
**Please call Tracey on 01780 782467**  
 \*\*\*\*\*



## PAWS AND CLAWS



### Boarding Cattery

*"Cats have a 'tail' to tell when they've 'paws'd' awhile at Wansford's 5 Star Purr Palace"*

**Tel 01780 782174**

**e-mail**

**[pawsandclaws@hotmail.com](mailto:pawsandclaws@hotmail.com)**

Working with Peterborough Cat Rescue to rehome cats and kittens seeking loving homes and laps on which to purr

Peterborough City Council & Rutland County Council  
Licence Number: 078015

## NEWS FROM WANSFORD PHARMACY

Start 2024 on a positive note by prioritising your health and well-being!

Wansford pharmacy, recently crowned "Pharmacist/Pharmacy of the Year 2023" at the national GP awards, is dedicated to helping you achieve your health goals. This new year, take advantage of our blend of NHS and private pharmacy services.

We offer screening for sleep disorders, weight management services, and free blood pressure checks for individuals aged 40 and above who haven't already had a diagnosis of high blood pressure.

Sleep is a non-negotiable part of our life and should not be a lifestyle choice. If you are suffering from any kind of sleep issue, our trained pharmacist can help. Our private service assesses the sleep issue(s), and with the option of a Home Sleep Test, we can then point you to the correct healthcare professional with a wealth of information back through the recognised NHS pathways. We are the only pharmacy in the UK currently pioneering this service, with the support of Newcastle University, so now is the time to help yourself (and others in the future) benefit from such a novel service.

Our NewWeigh weight management program is designed to provide you with rapid and healthy weight loss, whilst vastly decreasing hunger levels and allowing for greater control over food in the long term. You can count on our knowledgeable staff to address your health concerns and provide the necessary dieting support. Join us on this journey towards a healthier you!

We are also part of the NHS triage, accepting referrals for minor ailment queries from both NHS111 and local GPs. Calls to Wansford Surgery for issues such as earache, colds & flu, or other minor ailments, for example may well come through to us in the pharmacy so we can offer self-treatment in an appropriate and timely manner. This not only saves the NHS time it also reduces the burden on the stretched NHS resources where over the counter remedies can be purchased. Suffice to say our team of pharmacists will always liaise with the relevant healthcare professional, such as your GP, if there is need for their expertise or where medication needs prescribing.

2024 is YOUR year!! We've been awarded "Pharmacy of the Year" at the GP Awards 2023!



# Volunteers Needed!

- Are you interested in Primary & Secondary School Education?
- Do you have excellent listening skills?
- Are you able to make balanced decisions?

Parents/carers have the right to appeal if their child is not offered a place in their preferred school.

We coordinate an Independent Panel to review a school's decision to refuse a school place and determine whether one should be offered, or not.

We **urgently** need volunteers to be part of this professional panel – **Please Apply Today!** - Full training will be given.

[School admission appeals panel volunteering - Cambridgeshire County Council](#)

Please contact me to join our team of volunteers.

[Clare.Cronk@cambridgeshire.gov.uk](mailto:Clare.Cronk@cambridgeshire.gov.uk)

[cambridgeshire.gov.uk](http://cambridgeshire.gov.uk)



**Moore**

Trusted Advisers



**Thompson**

Chartered Accountants



# Your trusted advisers

We provide individuals and businesses with a full range of accounting, audit, corporate and personal tax planning services.

- Audit and Accountancy
- Business Acquisitions and Disposals
- Business Plans and Projections
- Corporate and Personal Taxation
- Grant Funding
- MT Cloud Accounting
- Payroll, Bookkeeping and VAT
- Tax Planning and Mitigation

For more information,  
please contact us:

 **01733 560160**  
**moorethompson.co.uk**



Peterborough | Spalding | Wisbech | Market Deeping



Moore Thompson is registered to carry on audit work in the UK  
by the Institute of Chartered Accountants in England and Wales.

## WANSFORD PARISH COUNCIL



Wansford Parish Council met on the 8th January 2024 led by the Vice Chairman in the Chairmans absence. All councillors were present along with Cllr Gavin Elsey of PCC.

There were 3 Members of the public present, which led onto the first points being raised which were to see how some items raised at prior meeting were progressing in respect of parking at Nene Close and clarification around tree management and disposal of discarded tree cuttings and planting around the play area. It is understood a little more time is required in terms of seeking funding to assist in a possible solution to the parking issues, discarded tree debris was being removed and the planting will progress in spring, so all items well underway.

The parish council discussed and considered an action to co-opt a new councillor which was agreed by all and therefore the process to have Tim Pearson join, or should I say re-join, the parish council was put in place. Welcome on board Tim.

WPC have been informed that the Nene way footpath running under the A1 will be closed for more than two years. It seems the notification was not sent to residents of Wansford which is both disappointing and unacceptable as were the alternative routes to cross the A1 involved crossing the live A1 carriageways North of Wansford or having a hefty detour via Stibbington. Seeing as there are no identified waymarkers it is felt that the contractors for the A47 dualling and Highways England have not considered the safety of the public in this action. Cllr Clarke has written to the relevant parties requesting clarification and alternative options suitable to maintain a safe crossing of the A1.

There is good news in regards to the reinstatement of a bus route running through Wansford and providing links to Peterborough with the final route yet to be decided but it is anticipated to be running from around April. This will provide many people both young and old the opportunity to travel more easily.

For a few years now WPC has provided a defibrillator located in the old telephone box on Old North Road. WPC have now committed to a further two units which will be installed in the coming weeks and give much greater cover should they be needed. We will be in a position to share the locations in next months Living Villages and on the village notice board.

It was also reported that the living advent windows which were presented across the village in the run up to Christmas were very well attended and created a lovely community feeling throughout the festive period. A great success for the Youth Council and thanks to Cllr Jane Taylor-Pitt for the work involved in this. We look forward to next year's windows.

The parish council also conducted statutory duties over planning with support given to residents regarding planning issues to ensure developments and changes are beneficial to the area.

As a footnote WPC are in need of a Parish Clerk, which is a paid role and training is provided. If anyone is interested and wants to know more about the role please drop an e mail to [clerk@wansford-pc.gov.uk](mailto:clerk@wansford-pc.gov.uk) or visit the website and contact any Cllr on [www.wansford-pc.gov.uk](http://www.wansford-pc.gov.uk). We would love to hear from you and have a chat.

**Cllr Graham Stevens**



# Would you like to be our Parish Clerk?



Wansford Parish comprises some 211 dwellings north of the River Nene in the Peterborough City Council area. Our Clerk attends monthly meetings in the Community Hall, Peterborough Rd, Wansford starting at 7:30pm, the second Monday of the month, and spends about 5 hours a week, working from home, preparing the Agenda, taking and writing up Minutes, and sending letters and emails. The Clerk is the Responsible Financial Officer and as such is responsible for all financial records of the Parish Council and the careful administration of it's finances. You will be issued with a computer and be required to update the Parish Council's web site regularly. There are seven elected Parish Councillors, who work voluntarily and the Clerk's role is a paid position which is available immediately. The prospective Clerk would serve 6 months' probation and preferably be CILCA qualified. The Parish Council can provide training for a person who does not hold this qualification but is willing to work towards it.

If you are interested in becoming our Clerk or would like to find out more, please contact me anytime and when applying for the position, please send your CV and a covering letter via email to [jane.taylor-pitt@wansford-pc.gov.uk](mailto:jane.taylor-pitt@wansford-pc.gov.uk)

WANSFORD PARISH COUNCIL

Contact Jane Taylor-Pitt

The Old Post Office, Bridge End Wansford PE8 6JH

Phone 07973 933397

Email: [jane.taylor-pitt@wansford-pc.gov.uk](mailto:jane.taylor-pitt@wansford-pc.gov.uk)

## SIBSON-CUM-STIBBINGTON PARISH COUNCIL

The January meeting has been rescheduled for the **1st February** in the **Christie Hall commencing at 7pm** and as always all resident of the Parish are welcome to attend or raise queries and concerns to the clerk via [sibson.cum.stibbington@gmail.com](mailto:sibson.cum.stibbington@gmail.com).

### Please note a change of date for the 48th AGM

The Christie Hall Management Committee

Invites you to the

48th Annual General Meeting

on Thursday 29th February 2024 at 7.30pm

To be held at the Christie Hall, Elton Road, Wanford.

Everyone Welcome.

For further information please contact [plewinwatts@gmail.com](mailto:plewinwatts@gmail.com)



## THORNTON PARISH COUNCIL

A meeting of Thornton Parish Council was held on 8th January 2024 in St Andrew's Church. It was chaired by Chris Smith and present were Yana Clipsham, Louise Molesworth, Nicky Rogers, Gavin Elsey (PCC Ward Councillor) and Deirdre McCumiskey (Clerk)

There were apologies for absence from Camilla Plumb.

### Police Matters

Rural Parish Police Surgery – Yana Clipsham and the Clerk attended this meeting where various issues were discussed including speeding and anti-social behaviour. Residents are encouraged to make any complaints via the appropriate channels rather than Facebook. Posters have been supplied for the noticeboards. The next meeting will be held 4.00 – 6.00 pm on 28th March 2024 in Wittering Parish Hall.

### Highways Issues

The Chairman had met with Highways Agency on 14th November 2023 (Sean Sharp and Mark Lambert). Mark Lambert confirmed that funding was decided in five-year cycles and therefore changes to the layby would be part of the 2025 budget submission. He has confirmed that he will be putting forward some substantive work on the layby (perhaps a wider, better footpath) and remedial plans would also include looking at the entrance into Thornton off the A1. Sadly, nothing is planned until then. However, they did agree to apply for changes once again to the bus-stop and once again seek closure of the layby. We are just waiting yet again. Discussion about the A47 entrance also being unsafe. Contact to be made with National Highways about better signage as a minimum. Peter Sharpley has informed the Chairman that Galliford Try has various grants available for local project and she will ask for the criteria.

### Social Events

It was noted that the Christmas Tree Event on 10th December 2023 had been enjoyed by those who had attended. Our thanks once again to the Wansford Ukelele Folk who made the event a success. A collection was done once again for the Children's Society and £102.57 was raised. It was agreed to look at holding a Social Event in the summer and this will be discussed at the next meeting.

### State of Russell Hill to A47

The Chairman said that as yet, there had been no response from Peterborough Highways. The request was forwarded to Gavin Elsey for support.

### Planning Applications

23/00852/FUL - Proposed Cattery, temporary mobile home and small pet crematorium at Magnolia House, Old Oundle Road, Thornton – No Objections/Support – Awaiting ; Decision/23/00954/HFUL - Proposed swimming pool and solarium, works to outbuilding, external works & planting scheme at The Hall, Thornton Hall Estate, Russell Hill, Thornton – No Objections – Permitted; 23/01338/FUL - Ground-mounted solar panels (60no) along with 3 electric vehicle charging points (retrospective) at Processors & Growers Research Association, Great North Road, Thornton – Permitted and 24/00017/CTR - Remove all 4no. conifer trees at 14 Russell Hill, Thornton - Neutral to accept the decision of the Tree Officer but to request replacement trees are planted at the site.

### Peterborough City Council Local Plan Briefing

This will be attended by the Chairman and Yana Clipsham. The Clerk will ask for the deadline for comments to be extended.

### State of the Pavements on Russell Hill

Louise Molesworth complained about the state of the pavements and Gavin Elsey asked her to send him some photos so he could investigate her concerns.

The next Thornton Parish Council Meeting will take place at **7.00 pm on 5th March 2024 in St Andrew's Church.**



## FENLAND DISTRICT BROKERS LTD

Your business needs protection at so many levels.

We can advise on full Insurance Coverage.  
Local, reliable and experienced.



**FOR ALL YOUR BUSINESS INSURANCE NEEDS**

0808 175 3050 | 22 Cecil Road, Peterborough | [www.fdbltd.co.uk](http://www.fdbltd.co.uk)

Fenland District Brokers Ltd are an Appointed Representative of Ten Insurance Service Ltd which is authorised and regulated by Financial Conduct Authority.

## Beat the midwinter blues!

# Book your next holiday with Kirstie

### Here's why...

- She has a wealth of travel experience
- She offers world wide cover, guided tours, cruises and rail journeys
- She can tailor make your ideal package or multicentre itinerary
- She can sell packaged holidays such as Jet2, Kuoni and Easyjet
- She's with you 24/7 for customer support - even when you're on holiday!
- She offers 100% financial protection
- She is friendly and caring

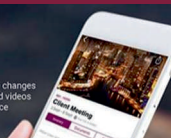
**Why wait? Call 01767 360014 or 07815 814798  
or email [kirstie.timmins@travelcounsellors.com](mailto:kirstie.timmins@travelcounsellors.com)**

**f kirstietimmins**

**myTC**

YOUR ONLINE ACCOUNT  
WITH TRAVEL COUNSELLORS

- Simple to use
- Available via Website and App
- Flight Alerts, inc. cancellations and gate changes
- Detailed hotel information inc. maps and videos
- All your travel documentation in one place



**travel  
counsellors**

## Thinking outside the box

On September 5th 1977, forty seven years ago, NASA launched Voyage 1 to explore the solar system and beyond. The spacecraft flew past Jupiter on March 5, 1979, and by Saturn on Nov. 12, 1980. A decade later, it was time for a solar system family portrait. Carl Sagan, one of NASA's astrophysicist's and being a part of Voyager's imaging team, is credited with the idea of having Voyager on board camera, take images of Earth and its sibling planets. Sagan knew the picture would render Earth as just a dot of light, but as stated on the NASA website, the Voyager team "wanted humanity to see Earth's vulnerability and that our home world is just a tiny, fragrant speck in the cosmic ocean."



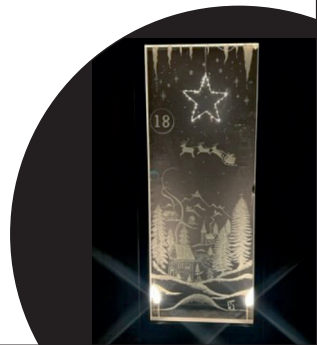
On Feb. 13, 1990, NASA and Jet Propulsion Laboratory engineers sent commands to Voyager 1 to face Earth in order to get the photo. A day later, three Earth-as-a-dot images were taken – then NASA shut down Voyager 1's camera permanently, to conserve energy for the rest of its decades long mission. Downloading the images took several weeks: The final download occurred May 1, 1990, via NASA's Deep Space Network.

Now, after nearly half a century, the craft is about 15 billion miles from Earth and travelling at 38,000 miles per hour. NASA and the JPL still keeps tabs on it as, having passed through the orbits of the outer planets, it enters deep space.

In his book, *Pale Blue Dot*, Carl wrote this: '*Look again at that dot. That's here. That's home. That's us. On it everyone you love, everyone you know, everyone you ever heard of, every human being who ever was, lived out their lives. The aggregate of our joy and suffering, thousands of confident religions, ideologies, and economic doctrines, every hunter and forager, every hero and coward, every creator and destroyer of civilization, every king and peasant, every young couple in love, every mother and father, hopeful child, inventor and explorer, every teacher of morals, every corrupt politician, every "superstar," every "supreme leader," every saint and sinner in the history of our species lived there--on a mote of dust suspended in a sunbeam. The Earth is a very small stage in a vast cosmic arena. Think of the rivers of blood spilled by all those generals and emperors so that, in glory and triumph, they could become the momentary masters of a fraction of a dot. Think of the endless cruelties visited by the inhabitants of one corner of this pixel on the scarcely distinguishable inhabitants of some other corner, how frequent their misunderstandings, how eager they are to kill one another, how fervent their hatreds. Our posturing's, our imagined self-importance, the delusion that we have some privileged position in the Universe, are challenged by this point of pale light. Our planet is a lonely speck in the great enveloping cosmic dark. In our obscurity, in all this vastness, there is no hint that help will come from elsewhere to save us from ourselves. The Earth is the only world known so far to harbour life. There is nowhere else, at least in the near future, to which our species could migrate. Visit, yes. Settle, not yet. Like it or not, for the moment the Earth is where we make our stand. It has been said that astronomy is a humbling and character-building experience. There is perhaps no better demonstration of the folly of human conceits than this distant image of our tiny world. To me, it underscores our responsibility to deal kindly with one another, and to preserve and cherish the pale blue dot, the only home we've ever known.'* - Carl Sagan 1934 - 1996

May I suggest that if you have read this article through to the end, you pick up a copy of the Holy Bible and read in the Old Testament, Genesis chapter one through to chapter two verse 3

**David B. Johnson**



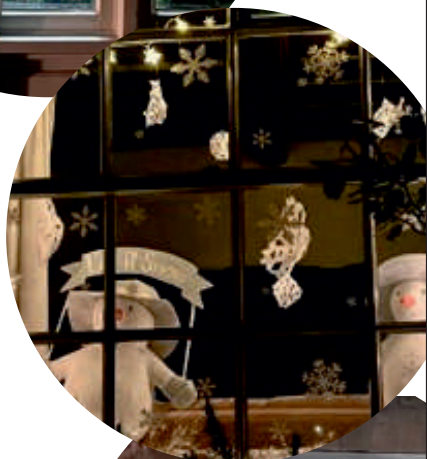


## A message from Cambridgeshire Constabulary

'Our local neighbourhood team have listened to you and are going to be hosting police surgeries across the rural areas of Peterborough. Across a 12-week period, we will be covering as much of the area as possible.

These surgeries will be an opportunity for you to come and meet our team's dedicated rural officer! You will be able to speak to him about any concerns and issues the community are experiencing.

The surgery for Wansford will be at the **Community Hall, Peterborough Road Wansford**, from **5pm-7pm on Thursday 8 February 2024**



*The*  
**BIG FIZZ**  
VINTAGE MOBILE BAR

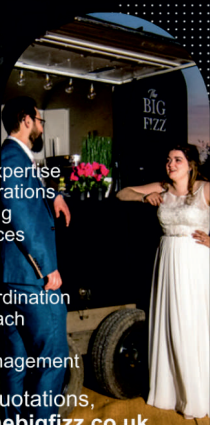
**Enhance Your Event**

Discover our exquisitely restored vintage Rice Beaufort Horse Box - the perfect mobile bar for top-notch drinks and professional service.

**What We Offer**

- Wedding & Event Expertise
- Unforgettable Celebrations
- Professional Planning
- Distinctive Experiences
- Indelible Moments
- Tailored Services
- Flawless Event Coordination
- Personalised Approach
- Special Occasions
- Proactive Event Management

For enquiries and quotations, please visit [www.thebigfizz.co.uk](http://www.thebigfizz.co.uk) or call **07738 662388**



## NEWS FROM WANSFORD AND KINGS CLIFFE PRACTICE

As Wansford and Kings Cliffe Practice enter a new year we would like to say a big thank you to everyone who has contributed to our food bank collections (ongoing) and our Christmas toy collection (now completed). Don't forget we recycle old spectacles and bras!

Did you know we have a social media presence (Facebook) and publish a quarterly newsletter on our website? The next newsletter will be published in March.

At the beginning of January we also conducted a patient survey. We sent out a link to all patients with an email address (6730 patients). We had a huge response, receiving almost 2000 replies. There are paper copies in reception at both Wansford and Kings Cliffe waiting rooms.

We are collating the responses and will publish the analysis shortly.

Please be reminded that we are seeing patients face-to-face, we do offer telephone appointments if this is your preference. Emergency appointments on-the-day will be dealt with over the phone unless a physical examination is required. Our reception team are trained in 'care navigation' so will ask for a brief description so that they can book you in with the most appropriate clinician.



# Just ask

Making the right decisions can be stressful at the best of times, but we are here to help. Whatever's on your mind, just ask.

**TOBIAS COLTON** BA(Hons) DipPFS  
Principal  
**TOBIAS COLTON WEALTH MANAGEMENT**  
Associate Partner Practice of St. James's Place Wealth Management  
07468 428 380  
tobias.colton@sjpp.co.uk  
www.tobiascoltonwealthmanagement.co.uk



  
**ST. JAMES'S PLACE**  
WEALTH MANAGEMENT

The Partner Practice is an Appointed Representative of and represents only St. James's Place Wealth Management plc (which is authorised and regulated by the Financial Conduct Authority) for the purpose of advising solely on the group's wealth management products and services, more details of which are set out on the group's website [www.sjp.co.uk/products](http://www.sjp.co.uk/products). The St. James's Place Partnership and the titles 'Partner' and 'Partner Practice' are marketing terms used to describe St. James's Place representatives.

SJP12026 V1 (04/20)

# GP (Retirement) Services



**Call Glen anytime on 07771 784643**

## Boat Hire on The River Nene

Day/Weekend/Long term hire

Gilly fishing trips (full kit available)



## Local Fabrication and Site Welding

Repairs or New Builds

Gates/Fences/Farm Machinery

Any job never too small



## Local Log Delivery



All logs cut to order

Mobile logging service

Mobile log splitting service

Dead tree felling service

# Wansford Horticultural & Craft Society

## 2024 Events Schedule

Please find below our exciting events schedule (draft) for the year ahead. If you wish to join our Society it is great value for just £5 for 2024. Please contact [rhonapunter@aol.com](mailto:rhonapunter@aol.com)  
Gary Punter Chair [garypunter@aol.com](mailto:garypunter@aol.com)

Month	Event	Venue
Thu 7 <sup>th</sup> March	Plant Hunting in China Talk by rev David Ridgeway (RHS judge)	7.30pm St Marys Church, Wansford
Sun 14 <sup>th</sup> April	Visit to see bulbs & blossom at Molesworth House (£5 each for 25 persons) & refreshments by Gilly & John Prentis	2pm Molesworth PE28 0QD
Sat 20 <sup>th</sup> & 21st April	Tulip Festival at Burghley (volunteers to help at festival)	Free entry for volunteers
Sat 4 <sup>th</sup> May	Plant Sale & cake/teas (donations from within the Society) Possible propagation workshop with Joe Whitehead	10-1230 Castor House
Sat 13 <sup>th</sup> July	Summer Extravaganza: BBQ and early evening musical entertainment	Mandy Garden, Stibbington House £20 pp
Friday 28 <sup>th</sup> June	Visit to Easton Walled Garden sweet pea festival	11am £10 pp self drive
24 <sup>th</sup> August	The Wansford Show. (Pending new Village Show organisation)	1200-1730 Bradshaw's Field
1 <sup>st</sup> September	Our popular Bulb & Plant sale on the wall at Goss Cottage (fundraiser)	Goss Cottage
Friday 20 <sup>th</sup> September	Visit to Cambridge Botanical Gardens 1.5 hour guided tour	1030 £15 pp plus lunch Self drive
Thursday 10 <sup>th</sup> October	Fascinating talk about the history of the National Garden Scheme	7.30pm Christie Hall
TBC November	'Flowers for Christmas' Workshop (max 15 places)	7.30pm Christie Hall
Sat 30 <sup>th</sup> November	AGM & Christmas social Sunday Lunch & all trimmings	Christie Hall 7pm





# Home Care & Support

Living independently at home is something most of us would like to do for as long as possible. However, there are times when we all need a little support with daily living tasks such as personal care and this is where Care Reserve can help.

## What are the benefits of Care Reserve home care?

- Help for everyday tasks, social activities or personal care
- You are at the centre of your own care and support at all times
- 24/7 support from a dedicated and highly trained team
- Support from local people, who know your area.

[admin@carereserve.co.uk](mailto:admin@carereserve.co.uk)

Workspace House Peterborough,  
28 - 29 Maxwell Road  
Peterborough PE2 7JE

Tel: 01733 396164; MB 07546251724

Our latest CQC rating:

 <b>Care Quality Commission</b>  <b>Overall Good</b>	Safe	Good
	Effective	Good
	Caring	Good
	Responsive	Good
	Well-led	Good

Our Clients



Inspected and rated

Good



**Care Quality Commission**



**Milton Keynes City Council**



**Care Reserve**  
Bridging the gap



# DIRECTORY OF CONTACTS

**For all enquiries, contributions and adverts**

<b>Craig Bunday</b>	craig@ascotgraphics.co.uk	07771 538661
<b>Ascot accounts</b>	accounts@ascotgraphics.co.uk	01487 801301

## Parish Councils

Sutton	Deirdre McCumiskey (Clerk)	01780 782668
Wansford	Marie Lewis (Clerk)	07899 732049
Sibson-cum-Stibbington	Charlotte Newman - sibson.cum.stibbington@gmail.com	
Thornhaugh	Deirdre McCumiskey (Clerk)	01780 782668
Water Newton (Parish Meeting)	Caroline Nathan (Chairman)	07989 362514

**City Councillor ( Wittering Ward) - Gavin Elsey** **07738930599**

## Churches

<b>Ministers:</b> Thornhaugh & Wansford	01780 782271
Stibbington, Sutton, Castor & Water Newton	01733 380900
<a href="mailto:admin.castor@btconnect.com">admin.castor@btconnect.com</a>	

### Churchwardens:

St Andrew’s Thornhaugh:	Stuart Foreman	01780 783220
	Liz Kemp	01780 782333
St Mary’s Wansford:	Caroline Ashley	01780 782408
	Alan Jones	01780 783205
St John the Baptist, Stibbington	Charlotte Bradshaw	01780 781805

### Friends:

St Mary’s & St Andrew’s	Caroline Ashley	01780 782408
St Remigius Water Newton	Jack Ward	01733 394646

## Other useful contacts

Neighbourhood Policing	101	P’boro City Council	01733 747474
Wansford Surgery	01780 782342	Royal British Legion	01780 782200
(Out of hours	111 option 4)	Stibbington & Wansford WI .	.781733
Wansford Pharmacy	01780 781616	Cricket Club	07860 278800
Communicare	01780 470437	Horticultural Society	01780 592514
H’don District Council	01480 388388	Stibbington Centre	01780 782386

**Website** **[www.livingvillagesmagazine.co.uk](http://www.livingvillagesmagazine.co.uk)**

©2024 Living Villages Magazine The contents of this magazine may not be copied, reproduced, distributed, republished, downloaded, displayed, posted or transmitted in any form or by any means without the prior written permission of Living Villages Magazine. You may not distribute, display or copy any of the contents of the pages contained in this magazine to third parties without the prior written permission of Living Villages Magazine. All images shown in this magazine are the property of Living Villages Magazine unless otherwise accredited to another. Images may not be used without the prior written permission of Living Villages Magazine or the accredited owner. Unless otherwise specified, the authors of the literary and artistic works in the pages in this magazine have asserted their moral right pursuant to Section 77 of the Copyright Designs and Patents Act 1988 to be identified as the author of those works. If permission is sort and given, it is expected that all articles/images be accredited to either Living Villages Magazine or the author of said articles/images. The views expressed in articles published are strictly those of the writer, and not of Living Villages. Living Villages cannot vouch for products and services advertised, nor accept any liability resulting from the purchasing of productsor services, although care is taken to ensure their suitability.

## NEED A LOCAL PLUMBER?

**PlumbCall** Plumbing & heating  
Same day / next day service!

- Gas, Electric, Oil, LPG & Solar
- Central heating: Full design & installation
- High efficiency boilers
- Boiler / combi replacements
- Central heating, boiler breakdown & plumbing aftercare
- Underfloor heating specialist
- Power flushing
- Landlord certificates
- Free estimating service
- Annual servicing
- All work guaranteed
- OFTEC Registered

**12 year manufacturer's guarantee on selected boilers**  
(Terms & Conditions apply)

**CALL US TODAY!**

**01733 243 047**

**or 07860 257 803**

E: [advice@plumb-call.co.uk](mailto:advice@plumb-call.co.uk)

W: [www.plumb-call.co.uk](http://www.plumb-call.co.uk)

Gas Safe Register No.8494  
LPG Registered



\*subject to acceptance terms and conditions apply



# NORTON RICKETT

Local *Independent* Estate Agents

- Free Market Appraisals
- Probate Valuations (RICS Surveyor)
- Local – Office near Wansford
- Established & Trusted since 2012
- Advertising on Rightmove
- Office Presence in London

**10**  
**YEAR**  
**ANNIVERSARY**

[www.nortonrickett.co.uk](http://www.nortonrickett.co.uk)

**01780 782 999**



# Crown

## Property Services

- 👑 Electrical & Plumbing
- 👑 Kitchens & Bathrooms
- 👑 Renovations
- 👑 Extensions
- 👑 Windows & Doors
- 👑 Groundworks
- 👑 Landscaping
- 👑 Internal Refurbishment

Old Sulehay Cottages, Sulehay Road, Wansford. PE8 6PA

### 07766 168659

jonathon@hibbins.me

# Village Pizzas

Open Tue – Sat for  
Collection / Eat-In at  
Leedsgate Farm  
4.30pm – 10pm

Or

Delivery 6pm till 10pm

## 01780

## 784587

View our Menu at  
[www.villagepizzas.co.uk](http://www.villagepizzas.co.uk)



Mat based Pilates and Chairiobics  
Classes for all levels

## MAT BASED PILATES

1 hr classes

Online on Zoom, or in person at  
Christie Village Hall (Wansford) and Harringworth Village Hall

Monday, Tuesday, Wednesday and Thursday  
£4 online / £6 in person



Ease back pain  
Strengthen your core, abs and back  
Improve sports performance  
Exercise without joint pain  
Increase your flexibility  
Boost brain power and focus

Christie Village Hall:  
16.45 and 18.00 Monday  
12.30 Wednesday

Online:

All the above times streamed  
plus 11.00 and 12.30 Tuesday  
11.30 Thursday

*Justine*

BROMAGE FITNESS

Justine Bromage  
Fully Qualified Level 3 Pilates Instructor  
Level 3 Personal Trainer  
RSA to Music Instructor

[justwhim@hotmail.com](mailto:justwhim@hotmail.com)

07919 106156



## Greenwood homecare

## Do you need care visits at home?

Greenwood Homecare  
provides quality care  
in Peterborough and  
the surrounding areas

✓ FREE ASSESSMENT

📍 DAY, LIVE-IN OR NIGHT  
CARE AVAILABLE



FOR MORE INFORMATION

Visit: [Greenwoodhomecare.co.uk](http://Greenwoodhomecare.co.uk)

Email: [Peterborough@greenwoodhomecare.co.uk](mailto:Peterborough@greenwoodhomecare.co.uk)

## Call: 01733 808531