

Living Villages

the WANSFORD SHOW

** NEW FOR 2023 **

Raising money for
Sue Ryder Hospice
& local organisations



SATURDAY 26TH AUGUST

Celebrating the best of our village life

FROM

12.00 - 17.30

GREAT VALUE AT £5 ENTRY
UNDER 16's FREE

HORTICULTURE & CRAFT
MARQUEE & PRIZES
**UPGRADED SCHEDULE
FOR CHILDREN**
SHOPPING AT OVER 40
LOCAL CRAFT STALLS
ART GALLERY IN THE MARQUEE
PLANT STALL & ADVICE
FAMOUS WANSFORD BOTTLE TOMBOLA
CHILDREN'S AREA
INFLATABLE ASSAULT COURSE & SLIDE
SACREWELL FARM INTERACTIVE
TUG OF WAR - NORTH VS SOUTH
OF THE RIVER NENE "REMATCH"
CHILDRENS TUG OF WAR

LIVE MUSIC FROM
YARWELL & NASSINGTON BRITANNIA
BRASS BAND, WANSFORD UKULELE FOLK,
AND THE HERBIE LAMB JAZZ QUARTET
**EXTENSIVE FOOD COURT
& PICNIC AREA**
TRADITIONAL TEA TENT
WANSFORD CRICKET CLUB BEER TENT
HAYCOCK MANOR HOTEL BBQ & DIN BAR
FENLAND HOG ROAST
COCO'S CARIBBEAN KITCHEN (VEGETARIAN)
NO 13 COFFEE BARISTA
50 CLASSIC CARS & BIKES



Contact: garypunter@aol.com or follow us at www.facebook.com/wansfordshow/
BRADSHAW'S FIELD, ELTON ROAD, WANSFORD, PEB 6JX

August 2023

Water Newton Thornhaugh
Stibbington Sutton Wansford

Tough decisions for UK investors

Forcing people to pay more tax on their hard-earned savings is not a popular policy for governments but it is something that UK investors face in the upcoming financial year after chancellor Jeremy Hunt confirmed a reduction to the capital gains allowance from April.

For investors, the most obvious effect on their savings is that any investment held outside an ISA or pension will be subject to capital gains tax.

• **These tax hikes mean that owning assets outside of tax effective wrappers is getting more expensive. One option available to investors is the often overlooked 'Bed and ISA', which is when any savings held in a general investment account are transferred over to an ISA.**

If you're planning to gift assets to someone else, then it could be worth making use of your annual CGT allowance this year before it's reduced. Many people don't realise that you also owe capital gains tax on assets gifted to someone else.

• The gain is based on the market value at the time of the gift but tax planning decisions are complicated and it's important not to let the tax tail wag the financial planning dog."

Simon Every AwPETR Adv DipFA Chartered ALIBF - Hill Grafford

Is it time to consider how your assets are invested?

Our Aim at Hill Grafford

To be there as an expert who knows you and your family personally to the extent that we can customise a financial plan that exactly fits your personal requirements.

We provide Holistic Advice on

- Long term care investment solutions
- Pension & investments
- Offshore and onshore tax planning
- Inheritance tax solutions
- Setting up of Trusts based investment solutions

We're here to help.

We were rated a Top Rated Financial Adviser for 2020 and 2021 - as distributed in The Times

Speak to one of our Local Chartered Financial Advisers today on

01780 784310 or 07967 015 805

www.hillgrafford.co.uk

A copy of client reviews can be emailed upon request.



Editorial

Dear readers

You will notice the poster for The Wansford Show adorning our cover - it's not long now until the event, which Living Villages are please to support, full details of classes and a timetable of events begin on page 15.

In our January edition we reported on the successful and enjoyable evening of fun and entertainment held in Wansford Church under the title We've Got Talent. Well it is back by popular demand this time called 'Let Us Entertain You' - so please make a note of the date Friday 15th September. Full details are overleaf.

Elsewhere this month we highlight the work of The Woolsey Charity on page 20. Also on page 20 are details from the first meeting of Wansford Youth Council, the members have highlighted some great ideas for youth activities which they need your support on. And if you enjoy board and card games, then take a look at Game On! from The Biscuit Tim Team at Nassington Village Hall on page 9.



Finally, if you have ever been interested or intrigued by Freemasonry, The Ellindon Centre in Peterborough is holding an Open Day on Saturday September 2nd - full details are on page 25.

Best wishes

Craig

Contents

6	Worship & Benefices
10	Stibbington and Wansford W.I.
15	WANSFORD SHOW
18	Parish Council Notices and Minutes
21	Wansford Horticultural & Craft Society
24	Wansford Cricket Fixtures
26	Contacts



LOCAL WINDOW CLEANER IN YOUR AREA

P.G.K

WINDOW CLEANING

Insured & Experienced *Water fed pole system*

Call for a free estimate

Tel 07368 671492 pgkwindowcleaning@gmail.com

Back by popular
demand

LET US ENTERTAIN YOU!

A fun evening of Comedy, Magic and Musical entertainment provided for the whole community



Friday the 15th September @ 7.30 pm

St. Mary's Church Wansford

Licensed bar from 7 pm

Admission is free with all welcome

Donations for upkeep of Church Building would be appreciated


Castor Lodge Care Home

Our family, caring for yours

At Castor Lodge, our care is the kind we would want all of our loved ones to receive. Offering residential and dementia care, our dedicated team make life comfortable and enjoyable for all our residents, allowing them to live safely and as they choose. Our brand new home is luxurious and beautifully furnished, whilst retaining a warm family atmosphere that makes Castor Lodge feel extra special.

- 68 Spacious en-suite bedrooms
- 6 Premium self-contained suites
- Bistro Café and themed pub
- Sociable lounge and dining areas

To find out more about life at Castor Lodge contact our Customer Relations Manager Laura Mills on 07725 799 217 or email laura.mills@countrycourtcare.com

 01733 823 163

 Splash Lane, Castor, Peterborough, PE5 7BD

 www.countrycourtcare.com

 Country
Court
Our family, caring for yours



NEED A RECOMMENDATION?

The **ONLY** Police Checked
recommended register of
local approved traders



safelocaltrades.com

Recommended & Approved



Much more than just a recommendation ...

Serving the PE Postcode community since 2008

Over 70 different trade categories and over 17,500 reviews

Here are some of our members ...

New Garage Doors & Repairs



**GARAGE DOOR &
SHUTTER SERVICES**

www.garagedoorandshutterservices.co.uk

Call Dave on

07709 337647

Electrician

**OLD COURT
ELECTRICAL**

www.oldcourtelectrical.co.uk

Call David on

07973 507420

Loft Insulation & Boarding,
Cavity Wall Insulation



www.atoz-energy.co.uk

Call Leanne on

07878 314562

Building & Carpentry Services



Steve Deprez & Son

Building • Brickwork • Carpentry

Preserving the past. Building the future.

stevedeprezbuilders@gmail.com

Call Steve on

07414 292188

Driveways, Patios &
Hard Landscaping

**STYLE
HOME IMPROVEMENTS LTD**

www.styleimprovements.com

Call Tony on

07879 881315

Gutter Cleaning & Repairs



www.guttercleancompany.com

Call Jeremy on

0800 179 9363

To see our full list of members and read all reviews just go to ...



www.safelocaltrades.com



0800 014 1832



The safest way to source local traders

Tear out page and keep

WORSHIP DATES

Every Sunday 5.00pm - Zoom 'At Home' Service. Log in and phone details from Rev. Jane jdtailby@aol.com 01780 782271

St. Leonard's, Apethorpe

6 th	11.00 a.m.	Holy Communion
20 th	11.00 a.m.	Holy Communion

St. Mary's and All Saints, Nassington

Every Thursday 9.30 a.m. Holy Communion BCP		
6 th	8.15 a.m.	Holy Communion BCP
6 th	9.30 a.m.	Holy Communion
13 th	9.30 a.m.	Holy Communion
20 th	9.30 a.m.	Holy Communion
23 rd	9.30 a.m.	Family Service and Crafts

St. Andrew's, Thornhaugh

6 th	9.30 a.m.	Holy Communion
20 th	9.30 a.m.	Holy Communion

St. Mary's, Wansford

Every Wednesday 10.00 a.m. Morning Prayer		
13 th	9.30 a.m.	Holy Communion
27 th	9.30 a.m.	Holy Communion

St. Mary's, Woodnewton

6 th	9.30 a.m.	Holy Communion
20 th	9.30 a.m.	Holy Communion
27 th	8.30 a.m.	Holy Communion BCP

St. Mary Magdalene's, Yarwell

13 th	11.00 a.m.	Holy Communion
20 th	3.00 p.m.	Methodist Service
27 th	11.00 a.m.	Holy Communion

CASTOR BENEFICE

We are still maintaining the following service pattern every Sunday in each of our **Parish churches** until further notice.
Marholm 9.00am - Holy Communion (Morning Prayer on 4th Sunday)
Castor 8.00am Holy Communion (said service) 10.15am - Sung Eucharist
Sutton 9.00am on 4th Sunday of the month - Holy Communion
 Every **Wednesday** morning at **10am** there is a service of Holy Communion at **Castor**.

We still continue to celebrate **Evensong via Zoom at 6pm every Sunday**, if you wish to join us please contact the Benefice office for the Zoom link and access code.
admin.castor@btconnect.com

Advance Notice - The next service at St. John the Baptist, Stibbington will be to celebrate **Harvest Thanksgiving on Sunday the 8th of October at 4pm**, see separate poster.

David Ridgeway

ST. JOHN THE BAPTIST STIBBINGTON

HARVEST THANKSGIVING

SUNDAY 8th OCTOBER, 4.00 pm



**REFRESHMENTS WILL BE SERVED
AFTER THE SERVICE**

**Do come and join us, you will be
assured of a very warm welcome**

The weekly cycle of prayer in the Church of England includes, on Mondays, prayers for the Media and the Arts. We may not think of praying for those involved in these

areas of life very often, but it seems to me important that we do. We can understand how important it is to pray for those who work in the media, who influence our thinking by the way news is reported, and indeed what is reported.

The Arts, though, why pray for those involved in the Arts, in all the breadth and variety under that large umbrella? Perhaps it is something to do with remembering what lifts our hearts and our spirits above our day-to-day routine and enriches our lives. I, for one, am enjoying the new Proms season, and I always enjoy a wander around an art gallery or a museum. We may all respond to what we see or hear in different ways, and enjoy different things, but we can give thanks for all that broadens our horizons and refreshes us, and indeed pray for those who share their talents with others. The Arts can educate, make us think, and offer new perspectives.

If we are thinking of refreshment and enjoyment, we ought probably to include Sport in our thanksgivings. Oddly enough, Sport doesn't feature in the weekly prayer cycle I mentioned, but I think it should, as again, those involved in sport entertain us, encourage us (and amaze us!) and indeed, influence our thinking. Those involved in the Media, the Arts and Sport all deserve our thanks and our thoughts; that they may use their talents for good and be aware of their responsibilities.

We often think of the summer as a time of rest and relaxation, a change from routine, although, of course, that isn't the case for everyone. However you spend this month, though, may you find refreshment and encouragement, and maybe take time to be more aware of what enriches your life and seek that out, and perhaps even seek out something new.

With every blessing
Rev. Jane

REFLECTIONS



Harvest Festival - Wansford Church

10th September

3.30 p.m.

Come and join us for a different sort of Harvest Festival with a short family service and harvest crafts and activities, along with refreshments.

ALL WELCOME!





Podiatry & Chiropody
Cracked Heels, Corns, Diabetic Foot Care,
Calluses, Hard Skin, Verrucae Treatments;
Biomechanics & Orthotics
Nail Surgery, Ingrown Nails,
Cryo Aesthetics for Skin Lesions,
Wilde Pedique Nail Reconstruction

01780 782200 Home Visits Available
Sue Arnold BSc(Hons) MRCPod & Associates
19 Elton Road, Wansford, PE8 6JD
wansfordinstep@gmail.com

Now Accepting New Patients!

Ear Wax Microsuction
Ear Ache? Hearing Loss? Blocked Ears?
Need A Pre Hearing Test Clean?
It could just be wax!




Dry carpet cleaning and upholstery cleaning services in Peterborough and the surrounding areas.

Whether you have an individual chair or carpet in a domestic property, or are interested in contract carpet cleaning in your business, you can benefit from our 35 years experience.

Telephone: **01832 280429**
Mobile: **07951 124374**
Email: info@bcnmulticlean.co.uk

GRIFFIN

**Solid Fuel Merchant
Supplier of Pre Packs**

Coal Bunkers Charcoal Compost
Flo Gas Logs & Sticks Salt

Coal Yard	Office
Station Road	12 Church Hill
Nassington	Castor
01780 782540	01733 380470

BARKLEYS GARDEN SERVICES
Your LOCAL Gardening Team

Regular garden maintenance
Lawn care and mowing
Hedge trimming

Lady gardener available
Get in touch by calling
Bev - 07593 721144
Peter - 07747 502471
beverleybarkley1@gmail.com

The Friends of St Mary's and St Andrew's

A big thank you to all those who join us for our Wednesday Coffee Stops; we have just donated again to Thorpe Hall and were able to send them £220.

There will only be one Coffe Stop in August which will be **Wednesday August 9th at 10.30** after Morning Prayer in St Mary's Church.

Caroline Ashley

It's Friday Afternoon Game On!

Woodland Timber Products

Fencing, Play Houses, Gates
Pet Housing, Sheds



01780

783983

Unit 4, Leedsgate Farm Business Park.
Kings Cliffe Road, Wansford PE8 6NX.
07748 787360
woodlandtimber.products@yahoo.com



Since it started last November, the free social hub called **Biscuit Tin** at **Nassington Village Hall** has become a real hit. Each Monday morning, people from all over drop in for a cuppa and slice of cake, or stay a while for a game of something. Board games have proved to be particularly popular, with many regulars making a bee-line for the Scrabble or Rumikub!

Such is the popularity of these games that we are pleased to announce a new Biscuit Tin spin-off we're calling **Game On!** This will be a monthly session for table top games such as Draughts, Scrabble and Canasta. It will run from 2-5pm with a charge of £2 per person to cover hall hire and refreshments.

Helen Dorey, a keen Canasta player who has been instrumental in launching Game On! said, "I am really excited to be getting Game On! up and running. It will provide another opportunity for people to get together, make new friends and keep the grey matter ticking over. We already have a number of games for people to try, but you can bring your own if you wish. My own favourite is Canasta, and I am looking forward to teaching as many people as possible how to play. Whatever you choose it will be a lot of fun!" **Game On!** takes place at Nassington Village Hall on the last Friday of the month. No need to book – just turn up for 2pm. Everyone welcome!

WANSFORD COMMUNITY HALL

Peterborough Road, Wansford

This hall accommodates parties of up to 36 people seated. Ideal for Meetings, Workshops, Aerobics etc

GREAT VALUE AT ONLY £4 per hour
FOR BOOKINGS TELEPHONE
John Stannage 07879 485330

Capitol Letturs



Your local property agent

With over 30 years of
experience

Relocation, Lettings and Sales

Please call our office for a
competitive quote

Peterborough - 01733 553366

(enquiries@capitolletturs.com)

www.capitolletturs.com



STIBBINGTON & WANSFORD WI



Today's women working for tomorrow's world

Our speaker at the July meeting was Brian Thornthwaite, a former Liverpoolian, now living locally, gave a talk entitled Liverpool in the Blitz.

When thinking of the bombing raids in World War Two, many assume that London bore the brunt of the German Luftwaffe.

In fact in terms of percentages, Liverpool suffered more casualties than the capital. On 8 August 1940, the first bombs fell on Merseyside. Liverpool was highly industrialised and had the second largest dock system, so along with other ports along the south coast, the German command planned to destroy these naval bases and dockyards. Nearby, Hull also suffered severe bomb damage. Liverpool prepared for this onslaught by putting in place extensive advance defences of the city. They began building air raid shelters and a supply of guns and aircraft rockets.

As Eire was a neutral country, Dublin was a very brightly lit city and this acted as a marker to the Luftwaffe, helping guide them to Liverpool. On 8 August 1940, the first bombs fell on Liverpool.

In the May blitz of 1941 bombs fell every night from 1st to 8th of May with a huge loss of life and damage. Brian showed pictures and photographs of the aftermath of the Blitz. The last bombing raid was on 10 January 1942. This meant that Liverpool suffered a period of 18 months from August 1940 to January 1942 heavy periods of bombing.

Brian ended his presentation with photographs and pictures of the devastation caused by the bombing and also photos taken during the many years it took to rebuild with pictures of children still playing in the rubble in the 1960s.

Over Spring, summer and Autumn we will be meeting in St Mary's Church Wansford, if you wish to attend one of our upcoming meetings to hear one of our visiting speakers, please get in touch.

Please see below for our upcoming events:

Please see below for our up, coming events:

Tuesday 8th August 2023 W.I. meeting, a visit to Boughton House, afternoon guided tour, 1 – 5pm

Tuesday 4th & 18th July 2023, 2-4pm Coffee & Craft club, at Wansford Community Hall

Thursday 10th August 2023, 7.30pm Book Club meeting, at The Cross Keys Wansford, Note change of date.

Tuesday 12th September W.I. meeting, speaker Gary Punter – From Sugar to Chanel

Both the Coffee & Craft club, and Book Club are open to all, not just for WI members, and we look forward to others joining us.

Rhona Punter
rhonapunter@aol.com

OVER 50 YEARS EXPERIENCE

Car buying as it should be; simplistic, with no admin fees, no pressure and a wealth of knowledge to help you find your dream car.

Great part exchange prices given

Finance from as low as 6.9%

www.heartysofpeterborough.co.uk

01733 560605

sales@heartysofpeterborough.co.uk



HEARTYS
of Peterborough



Georgina's
Curtains & Keepsakes

Covering all the Villages
Stamford to Stibbington
(and everywhere inbetween!)



Bespoke handmade curtains, roman blinds and soft furnishings to complement your home.
For a free consultation and quote call 07957 686595
www.georginascurtainsandkeepsakes.com

PennyYoga

Be a Better Version of Yourself
Be more flexible, stronger and calmer with Yoga
Small friendly groups welcome all levels, ages & fitness.
Morning & Evening sessions Mondays, Tuesdays and Thursdays
Contact Penny today - 07960267986 pennyyoga@yahoo.co.uk



polished
NAILS & BEAUTY



Award winning nail and beauty professional, providing luxurious treatments from a relaxed setting

TREATMENTS AVAILABLE

- Manicures & pedicures
- Gel polish
- Footlogix medi-pedi
- Nail rehabilitation
- Bespoke nail art
- Nail extensions
- Eyelash extensions
- Facial waxing
- Tinting
- LVL (lash lift & tint)
- IBX nail strengthening & repairing



phone 07811 057715
email hello@polished-nailsandbeauty.co.uk

website www.polished-nailsandbeauty.co.uk
Find us on Facebook @polishednailsandbeautyuk

THE HAYCOCK MANOR HOTEL, WANSFORD, PETERBOROUGH, PE8 6JA

THE CHRISTIE HALL
 Elton Road, Wansford
 (registered charity no 1033998)

A well-equipped hall
 with large kitchen and parking.
**Available for parties, receptions,
 meetings, activity groups
 and most types of private functions**
 For more information and details on how to book
 visit our website
www.christiehall.co.uk

MOBILE HAIRDRESSING

Ladies & gents hairdresser with over 30 years experience. 

If you are housebound, have reduced mobility, no transport or simply prefer the convenience of having your hair done at home, I have daytime appointments available. Fully insured. Competitive prices.

Please call Tracey on 01780 782467

PAWS AND CLAWS

Boarding Cattery

"Cats have a 'tail' to tell when they've 'paws'd' awhile at Wansford's 5 Star Purr Palace"

Tel 01780 782174
 e-mail
pawsandclaws@hotmail.com



Working with Peterborough Cat Rescue to rehome cats and kittens seeking loving homes and laps on which to purr

Peterborough City Council & Rutland County Council
 Licence Number: 078015

FRIENDS OF ST REMIGIUS WATER NEWTON

SAVE THE DATE

WATER NEWTON MUSIC FEST 2023
Bank Holiday Sunday 27th August

After an absence of 3 years, the organisers are delighted to announce the return of the ever popular Water Newton Music Fest.
 The full line up of bands will be released shortly

Gates open at 12 noon with first band on stage from approximately 1pm.

The event will be held on the village green, Water Newton, with continuous music through to 7.30pm.

This year there will be delicious food, together with locally made hamburgers and a beer tent serving real ales supplied by our very own local brewery - Castor Ales.

For now, be sure to note the date in your diaries and let all your friends know of the event.



Your trusted advisers

We provide individuals and businesses with a full range of accounting, audit, corporate and personal tax planning services.

- Audit and Accountancy
- Business Acquisitions and Disposals
- Business Plans and Projections
- Corporate and Personal Taxation
- Grant Funding
- MT Cloud Accounting
- Payroll, Bookkeeping and VAT
- Tax Planning and Mitigation

For more information,
please contact us:

 **01733 560160**
moorethompson.co.uk

Peterborough | Spalding | Wisbech | Market Deeping



Moore Thompson is registered to carry on audit work in the UK by the Institute of Chartered Accountants in England and Wales.



We are delighted to announce the running order for our Show on Saturday 26th August.

1200	Show Opening
1215 - 1330	Live Music, Wansford Ukulele Folk
1300 - 1700	Horticulture & Craft Marquee opens (1130 - 1300 Judging)
1330	Plant Advice Centre with Nicholas Warliker
1330 - 1515	Live Music, Yarwell & Nassington Britannia Brass Band
1415 - 1445	Live Music, Meredith band
1515 - 1730	Live Music, Herbie Lamb Jazz Quartet
1530	Award of Horticulture & Craft Trophies, Raffle Draw.
1600	Tug of War (Adults & Children: North vs South)
1630 - 1730	Collect your exhibits from the marquee
1730	Show Close



Tickets

Now on sale in the Wansford Post Office/Shop and until 23rd August 'Early Bird' tickets will be just £3. Tickets on the day will be £5 (under 16 free). Tickets are also available on Eventbrite (see QR code)

Getting to the Show

The Show is held on Bradshaw's Field, Elton Road, Wansford PE8 6JS (sat nav).

Walking: The pedestrian access is via the path next to The Christie Hall. Please do not use the single-track vehicle access as this can be dangerous, with no footpath separating you from the cars. Please also note that the field can be a bit uneven under foot.

Vehicles: Free parking is provided via single track off Elton Road. Stewards will guide you to the car park and please be patient for the 1-way traffic system in operation.

Wansford Bridge is closed to cars (pedestrians okay) during the time of the Show (Please follow diversions in place).

Horticultural & Craft Show Marquee

You are warmly invited to get involved by entering exhibits into the **Marquee**. We have plenty of classes for everyone to enjoy. List of classes & entry form below.

Children's Entertainment

Fun packed Show for all ages and this year we have made an extra special effort to provide fun for children and young adults to include: Hook a duck, Garden Kerplunk.

Story Telling, craft activities, Treasure hunt, Sacrewell Farm Interactive, Inflatable Slide
Inflatables Assault Course, Children's Tug of War, WI children's tombola, Toddler Ball Pool, Children's entries in Marquee

Bottle Donations

We will soon be collecting bottle donations for our very popular **Tombola Stall**. Anything from Champers to Shampoo! A member of our team will knock on your door soon or contact

Mandy Veni for your nearest drop off point (mveni@btinternet.com) or drop off at Wedgwood Cottage, Elton Road.

Volunteer Briefing

We have such a great response again from our volunteers to help at the Show for 1-2 hours. For those helping out we have arranged a briefing evening which will be held at Cross Keys pub, Elton Road 7.30pm Monday 21st August. Looking forward to giving our Show visitors a

'Warm Wansford Welcome'
Gary Punter & Quentin Arnold
Show Chairman(s)

Classes for
everyone to
enter



Grow your Vegetables

- V1 Potatoes (5)
- V2 Onion (5)
- V3 Carrots (3)
- V4 Runner beans (6)
- V5 Dwarf French beans (6)
- V6 Beetroot (3)
- V7 Tomatoes (beefsteak) (3)
- V8 Tomatoes (cherry) (8)
- V9 Tomatoes (plum) (5)
- V10 Tomatoes (garden) (5)
- V11 Cucumber (1)
- V12 Courgettes (3)
- V13 Fresh Herbs (4)
- V14 Squash/ pumpkin (3)
- V15 Other veg, not in above (3)
- V16 Apples dessert (5)
- V17 Apples cooking (5)
- V18 Pears (5)
- V19 Plums (5)
- V20 Veg collection
- V21 Fruit collection

Growing
Season will
soon be
here !



Delightful Flowers

- F22 Large Dahlias (3)
- F23 Small Dahlias (3)
- F24 Collection of garden flowers (10)
- F25 Collection of roses (5)
- F26 Single Rose (1)
- F27 Hanging basket/Patio pot
- F28 Best Garden
- FA29 Celebrating village life (flower arrangement)

Wonderful Cookery

- FD30 Victoria Sponge
- FD31 Chocolate Cake
- FD32 Vegetable cake
- FD33 Scones (6)
- FD34 Sausage Rolls (3)
- FD35 Home baked loaf
- FD36 Jar of preserve
- FD37 Jar of chutney
- FD38** Fruit Liqueur

Creating Art & Craft

- CA39 Knitted or crocheted article
- CA40 Cushion, quilted or tapestry
- CA41 Any other article
- CA42 Art (any medium)

Inspiring Photography

- P43 Quartet of themed photos
- P44 Black & white
- P45 Wildlife
- P46 Architecture
- P47 Transport

the
**WANSFORD
SHOW**

READY SET GO!



TOY PET SHOW

Bring your favourite toy animal to show in our Toy Pet Show. You must also enter a picture of your toy pet in the Arts& Craft Class.



READY STEADY GROW

Class GA: The longest runner bean (??Your Scurrow Plant??)
 Class GB: A vegetable grown by you.
 Class GC: Wankest vegetable.
 Class GD: A sunflower plant. Tallest & Shortest!
 Class GE: A herb grown by you
 Class GF: Tomatoes – Cherry (6) grown by you.
 Class GG: Tomatoes – Not Cherry (5) grown by you.
 Class GH: Chili Plant – potted grown by you.
 Class GI: Apples – Dessert or Cooking (5)
 Class GJ: Any soft fruit (5)
 Class GK: A vase of garden flowers (min 5 stems)
 Class GL: A flower arrangement in a wicker basket.

READY STEADY BAKE

Class BA: Three identical decorated cupcakes
 Class BB: Three chocolate scones (5-6cm diameter)
 Class BC: Pizza face (15cm diameter)
 Class BD: Three sausage rolls (5-6cm long)
 Class BE: Three Flappjacks
 Class BF: Three Chocolate Brownies
 Class BG: A Jar of Jam/Jelly or Chutney
 Class BH: Three chocolate cornflake cakes

READY STEADY PHOTO

Class PA: A portrait photograph of someone you love.
 Class PB: An action shot of a sport.
 Class PC: A Selfie
 Class PD: Wildlife (Plant or animal not a pet)
 Class PE: A building

READY STEADY ARTS AND CRAFTS

Class AA: A picture of your Toy Pet Show entry. See Toy Pet Show
 Class AB: A Robot made from recycling materials.
 Class AC: A painting or drawing of your garden
 Class AD: A painting or drawing of a beach scene
 Class AE: An item of pottery
 Class AF: Lego or Duplo Model
 Class AG: An item of sewing or needlework
 Class AH: An item of knitting or crochet
 Class AI: A useful household item in any medium
 Class AJ: A paper or fabric collage of flowers
 Class AK: A hard craft item (wood, metal, stone etc)
 Class AL: Any poem in your own handwriting (No double line borders)

Start
planning
now for
August



Schedule
for Children
& Young
People



Wansford Horticultural & Crafts Society. Entry form

Name

Address Phone

Email address

(Child entry only: pre-school/ KS1/ KS2/ KS3/ KS4. Please select one. Age yrs)

How to enter. Entry is free of charge.

- Entry forms can be submitted until Sunday 20th August 2023 by 8pm. Email wansfordshow@gmail.com, or sent to: Rhona Punter 4 Elton Road, Wansford PE8 6JD
- Entry form will only be accepted with your full name and contact details. For a child's entry, highlight age grouping.
- **Photography classes only – entered to 4, Elton Road, Thursday 24th August 2023 5 – 7pm**
- Exhibits can be placed in the marquee from 9 – 10.30am on the morning of the show. Please park on the field
- Your contact details will only be used to notify you if you have won a prize.
- Please also see the rules of the show within the Schedule 2023

Class number(s) entered		

WANSFORD PARISH COUNCIL



Wansford Parish Council met on the 10th July 2023 which was well attended with residents, the Ward Councillor, and Ms Keeley Russell of Galliford Try (the contractors for the construction of the new A47 duelling). Ms Russell explained the interaction that Galliford Try want to have with residents, parish councils and other bodies affected during the construction of the new A47 section and that she would be on site at Sacrewell Farm site offices most days during that time for anyone to discuss the method and stages of the works. She also explained how National Highways funds are to be made available which would support and benefit the area socially and economically and she encouraged Wansford Parish Council (WPC) to reach out to residents and groups to bring forward suggestions of any scheme that could improve the area. The WPC Clerk will have more information available on this on the parish council website (www.wansford-pc.gov.uk) who will also have support in making applications so please have look at this and bring suggestions forward as there is £10k per project available.

Residents in attendance at our last meeting brought some useful information, ideas and requests to the table which were all great to hear as interaction from the community is very important and WPC will always listen and work on your behalf when questions or suggestions are raised. On this occasion we had some updates for two residents about the overgrown grass around the play area and parking issues in Nene Close although our answers may not have been fully to their satisfaction. However, WPC can find other routes to approach these issues and with Cllr Elsey in attendance he understood and supported the need to investigate further, which is good news. Other residents had issues around the increasing traffic noise from the A47 and concerns around the roadworks about to start, a very timely comment and one which will open discussion on possible solutions or mitigation.

We also discussed the use of Wansford Bridge along with its impending repairs and which is due to be closed to vehicles from the 18th July 2023 for ten weeks, as well as how to reduce the damage occurring from overuse. There were several suggestions made on how to manage the reduction of HGVs and other unsuitable vehicles which is also being highlighted as an issue while the A47 roadworks are in full flight and may push traffic through the village. A multi-agency meeting has been scheduled to discuss the bridge and possible funding through stakeholders of the bridge.

A Planning matter was reviewed as part of WPC's remit regarding the proposed further development of Yarwell Mill caravan park and our councillors agreed to support Yarwell Parish Council with their views on this matter. There was also debate about the potential development of Sibson airfield. Its development may become part of Huntingdonshire District Council's 5-year Local Plan as a possible location to build what effectively would become a small town. WPC have written to Hunts District Council to strongly object to this potential development and would urge any individual to do the same. WPC also raised concerns that it had not been informed directly about this plan when it would have a direct impact on our neighbouring rural environment.

Cllr Taylor-Pitt reported on a Youth Council which has been formed to encourage children in and around the village to have a voice from their perspective of living in the area as well as to participate in a number of fun activities. Cllr Taylor-Pitt advised there had been a good response and WPC agreed to support the Youth Council with a small budget to support their activities. This is a great initiative to bring input from our younger residents and an area where we can learn how to develop or guide the village outlook for future lives (see page 20 for more details).

There were of course many other highlights but alas the word count has beaten me and all the finer points of the great work being done can be found online on the WPC website and in the minutes of the meeting.

Cllr Graham Stevens

THORNHAUGH PARISH COUNCIL

The next Thornhaugh Parish Council Meeting will take place at **7.00 pm on 17th July 2023 in St Andrew's Church**. A report will appear in a future edition of Living Villages.

SIBSON-CUM-STIBBINGTON PARISH COUNCIL

SIBSON-CUM-STIBBINGTON PARISH COUNCIL met on the 6th July, 2023.
Six Councillors attended together with our Clerk to the Council.

There were 2 declarations of interest on Agenda Items. Cllr. Bradshaw on item 7.1 planning 23/00983/HHFUL and Cllr. Wright on the call for sites at Sibson Airfield.

During the public forum several items were discussed. This included the Double Yellow Lines on Old Great North Road, which were addressed as Cllr Beuttell had met with our local Highway officer in the morning and walked through to process of finally placing the lines on the road. The Local plan was raised, and it has been suggested that it will take some time for the Plan to be accepted and approved by HDC. Parishioners were encouraged to monitor the HDC website, although the public consultation period has now ended.

Speeding and traffic management was raised again, and with the impending closure of the Bridge in Wansford it was felt that we had an opportunity to request speeding figures. Traffic calming measures were also discussed. Several residents noted that there had been a lack of information regarding the closure of the bridge, which is due to take place on the 18th July, and the work to continue for approx. 10 weeks.

Minutes of the previous meeting were duly signed and approved the to Council. The notice board will be ordered shortly. The subject of the Play area was discussed and further investigation will take place

Cllr. Turner is to investigate overgrown shrubs on the footpath on Church Lane together with deadfall branches on Roman Drive.

Several payments with approved and duly signed off.

Planning at 45 Church Lane as mentioned above, were responded to and no objections were raised.

The Parish Council has posted Warning notices on the gates leading to the river, having been informed by the Environment Agency that all inflatables and non -motorised paddle boards etc. require a licence from the Environment agency.

There were concerns regarding a breach of planning permission at 81 Elton Road. This has been dealt with by the Planners at HDC.

There were complaints by Cllr Turner regarding an incident on the Bridge whereby drivers refused to give way, thereby causing an unnecessary blockage on the bridge. Safety concerns were raised.

Cllr. Beuttell shared the news that as from 1st April Huntingdonshire District Council intends to introduce a £57.50 charge for the removal of Green waste. This will be an annual charge (not payable in instalments) and a further £30 for additional bins. Residents, should they wish, should complain to HDC Democratic Services. It is felt that this charge could increase the amount of green waste being put in the Grey bin and increase landfill.

The next meeting of the Parish Council will be on **Thursday 7th September, 2023 at 7pm** in the Christie Hall.



Studying for a course?

Did you know you can apply for a grant?

Since the early 1990s the **Reverend Thomas Woolsey's Charity** has been giving a contribution towards equipment or expenses to students of all ages from Thornhaugh and Wansford for further education, apprenticeship or skills.

The Trustees of the charity will be meeting in September to allocate the grants, so there is plenty of time for any student to apply.

Go to the website **thewoolseycharity.co.uk** for more information and complete the application form.

Lisa Chambers, Secretary, Rev. Thomas Woolsey's Charity



Minutes from Wansford Youth Council

Wansford Parish Council asked their residents how to improve the community, one of the ideas was to have more activities for children. Who better to come up with ideas than the children themselves? Asking for local volunteers, 5 children stepped forwards for the first **Wansford Youth Council** meeting on the 19th July and thought not only about ways to improve the lives of children in the village but also how to improve the environment and involve adults too. Here are some of their ideas below. If you would like more information or to become involved, please contact either Jane Taylor-Pitt or the Clerk at Wansford Parish Council. All contact details on the website: <https://wansford-pc.gov.uk>

Ideas from the children:

- More grown-up activities in the park for older children
- Zip line
- Berry bushes
- **Flower baskets**
- **Bug hotels**
- **Bird houses & feeders**
- **Halloween activities**
- **Treasure Hunt**
- Bonfire & camp – we will need to find a space in the village for this and discuss safety
- **Advent calendar windows**
- **Christmas trailer & carols – everyone**
- Water gun fight – no cost involved, needs more discussing for safety
- Tennis court
- Basketball hoop
- Football pitch
- Bike racks by the bus stop & park
- Allotment
- Bouncy Castle (this will be at The Wansford Show)

The ideas **in bold** are the ones we can work on straight away and within the budget allocated by Wansford Parish Council. The other ideas will need more investigation and funding.

Wansford Horticultural & Craft Society

'Wow what a busy time'

We (and 63 guests) enjoyed a splendid afternoon and evening of sunshine at our traditional Summer Social & Open Gardens.

4 gardens were open to our members (Thanks to the Fawthrop's, Veni's, Punter's & Arnolds) and then we retired to the garden of Barry & Mandy Veni to be serenaded by the very popular mini 'Wansford Ukulele Folk'. A great BBQ was served by the Hort.Soc. Committee and we enjoyed each others company, glass of wine (and a quiz) as the sun set. Quintessential village fun !

Gary
garypunter@aol.com



Just ask

Making the right decisions can be stressful at the best of times, but we are here to help. Whatever's on your mind, just ask.

TOBIAS COLTON (BA)(Hons) DipPFS
Principal
TOBIAS COLTON WEALTH MANAGEMENT
Associate Partner Practice of St. James's Place Wealth Management
07468 428 390
tobias.colton@sjpp.co.uk
www.tobiascoltonwealthmanagement.co.uk




ST. JAMES'S PLACE
WEALTH MANAGEMENT

The Partner Practice is an Appointed Representative of and represents only St. James's Place Wealth Management plc (which is authorised and regulated by the Financial Conduct Authority) for the purpose of advising solely on the group's wealth management products and services, more details of which are set out on the group's website www.sjp.co.uk/products.
The St. James's Place Partnership and the titles Partner and Partner Practice are marketing terms used to describe St. James's Place representatives.

SJPM2026 V1 (04/20)



FENLAND DISTRICT BROKERS LTD

Your business needs protection at so many levels.
We can advise on full Insurance Coverage.
Local, reliable and experienced.



FOR ALL YOUR BUSINESS INSURANCE NEEDS

0808 175 3050 | 22 Cecil Road, Peterborough | www.fdbltd.co.uk

Fenland District Brokers Ltd are an Appointed Representative of Ten Insurance Service Ltd which is authorised and regulated by Financial Conduct Authority.

tmk

TILES + INTERIORS

Carefully selected tiles from established UK, Italian and Spanish suppliers, all with style, quality and value in mind.



Station Road, St Ives, Cambs PE27 5BH



tmktiles.co.uk



01480 266321

NAVIGATION ADVISORY NOTICE**RIVER NENE****DATE: 26 June 2023 – Until Further Notice****LOCATION: All Sites****DETAILS:**

With the recent onset of warmer weather our sites have seen an increase in public gatherings. However, we have also experienced a rise in vandalism and anti-social behaviour alongside this.

The Environment Agency would appreciate your support with instances of anti-social behaviour and ask that the Police are contacted for this reason and such behaviour reported on the non-emergency number 101. The more calls they receive from the public alerts them to the importance of the need of potential patrols or further measures.

However, should the site also be damaged we request that as well as contacting the Police, you call the Environment Agency also to report the damage for us to enable a repair to be carried out.

Thank you for your support in keeping our sites pleasant places to be. Your calls to the Police on the non-emergency number 101 help us to have a louder voice when dealing with instances of anti-social behaviour and damage at our sites.

For further information, please contact the Environment Agency on 03708 506506 between 9am and 5pm Monday to Friday and ask for the Waterways team in the Lincolnshire & Northamptonshire Area.

Katherine Briscoombe**Waterways Manager****26 June 2023**

customer service line
03708 506 506

incident hotline
0800 80 70 60

floodline
0345 988 1188
0845 988 1188

www.environment-agency.gov.uk/ www.visitanglianwaterways.org

PETER RIDDINGTON LANDSCAPING

We supply and install Patios & Pathways, Decking, Stone Walls and Fencing, We plant Trees, Shrubs Hedges and Flowers, and offer a complete Garden Maintenance and Improvement Service. Garden design service provided
Contact Peter Riddington today for a free quotation

4 LOCKS GREEN, YARWELL, PETERBOROUGH PE8 6PY
Telephone: 01780 783004 Mobile: 07860 962068
Email: peter@peterriddington.co.uk



Wansford in England CC Fixtures 2023



Date	Opponents	Venue	Result/ Time
Sunday 6/08/23	Whittlesey	Away	1pm
Sunday 13/08/23	Old East	Home	1pm
Sunday 20/08/23	CAMRA	Home	1pm
Sunday 27/08/23	Orton/ Motley/ Admiral/ T20s	Home	11am
Sunday 3/09/23	Hampton	Away	1pm

T20 Games

Tuesday 1/8/23	Ashpat XI	AWAY	17:30
Tuesday 8/8/23	Castor	AWAY	17:30
Tuesday 15/8/23	CAMRA	Home	17:30
Tuesday 22/8/23	Royal Strikers	Home	17:30
Tuesday 29/8/23	Ashpat XI	Home	17:30






Oil boiler servicing and repairs, heating controls, hot water service and repairs.

Your local heating expert for over 15 years.

Jo Childs,
8 Black Swan Spinney,
Wansford.

Mob : 07729036942




Perfect Drainage Solutions

Your Drainage Experts (est 2023)

- Gutter Cleaning
- CCTV Drainage
- High Pressure Water Jetting
- Drain Blockage Clearance
- Tanker Service
- Repairs




07817723610

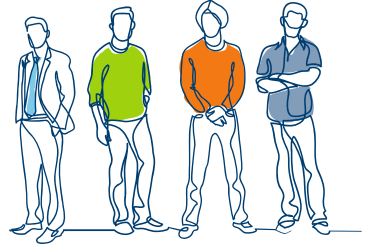
info@pdsLtd.co.uk

www.perfectdrainagesolutions.co.uk

An Open Day for those interested in Freemasonry

After a very successful event in 2022, Peterborough Masonic Centre in Ellindon will open its doors once more on **Saturday 2nd September**, so that the general public can discover a little more about Freemasonry. The Open Day Event will run from 11am to 3pm.

With a membership of more than 200,000 people drawn from communities across the UK, Freemasonry brings people together irrespective of their race, religion or any other perceived differences that can divide us as a society. Being one of the oldest social organisations in the world, Freemasonry is not defined by an ideology – it is open to people from all religions and political persuasions, and provides the common foundation for friendships between members, many of which will last for life. Rather than working on buildings like the masons of old, today's Freemasons focus on building themselves as people of integrity.



Freemasons use four important guiding principles to help define their path through life: integrity, friendship, respect and charity. Kindness and charitable giving are deeply ingrained within their principles. It provides a support structure that helps members make positive contributions to communities and worthwhile causes through fundraising events or volunteer work. For example, local Freemasons have been heavily involved with Three Pillars Feeding The Homeless Trust as well as Deaf Blind UK, Nene Valley Care Trust and Peterborough Cathedral.

Local Head of Freemasons, Mark Constant, said of last year's event: "It is always a great pleasure to open our doors to the public and explain a little more about Freemasonry and to have the opportunity to explain our key messages. The Open Day enabled people to find out more about our work and social activities, with displays from our local museum curator showing our 300 years of history, to our work today including recent fundraising, and showing people inside our Lodge rooms."

If you would like to discover a little more about Freemasonry then please come along to the event to take a look, e-mail pmo@northants-huntsmansons.org.uk or visit www.northants-huntsmansons.org.uk



Discover Freemasonry

Open Day

Friendship Integrity Respect Charity



Saturday 2nd September 2023
11am to 3pm
Ellindon Masonic Centre,
127 Ellindon, Bretton, Peterborough PE3 8RD

If you would like to know more and are unable to attend
please e-mail: pmo@northants-huntsmansons.org.uk

DIRECTORY OF CONTACTS

For all enquiries, contributions and adverts

Craig Bunday	craig@ascotgraphics.co.uk	07771 538661
Ascot accounts	accounts@ascotgraphics.co.uk	01487 801301

Parish Councils

Sutton	Deirdre McCumiskey (Clerk)	01780 782668
Wansford	Marie Lewis (Clerk)	07899 732049
Sibson-cum-Stibbington	Charlotte Newman - sibson.cum.stibbington@gmail.com	
Thornhaugh	Deirdre McCumiskey (Clerk)	01780 782668
Water Newton (Parish Meeting)	Caroline Nathan (Chairman)	07989 362514

City Councillor (Wittering Ward) - Gavin Elsey **07738930599**

Churches

Ministers: Thornhaugh & Wansford		01780 782271
Stibbington, Sutton, Castor & Water Newton		01733 380900
	admin.castor@btconnect.com	

Churchwardens:

St Andrew's Thornhaugh:	Stuart Foreman	01780 783220
	Liz Kemp	01780 782333
St Mary's Wansford:	Caroline Ashley	01780 782408
	Alan Jones	01780 783205
St John the Baptist, Stibbington	Charlotte Bradshaw	01780 781805

Friends:

St Mary's & St Andrew's	Caroline Ashley	01780 782408
St Remigius Water Newton	Jack Ward	01733 394646

Other useful contacts

Neighbourhood Policing 101	P'boro City Council	01733 747474
Wansford Surgery	01780 782342	Royal British Legion 01780 782200
(Out of hours	111 option 4)	Stibbington & Wansford WI . .781733
Wansford Pharmacy	01780 781616	Cricket Club 07860 278800
Communicare	01780 470437	Horticultural Society 01780 592514
H'don District Council	01480 388388	Stibbington Centre 01780 782386

Website www.livingvillagesmagazine.co.uk

©2023 Living Villages Magazine The contents of this magazine may not be copied, reproduced, distributed, republished, downloaded, displayed, posted or transmitted in any form or by any means without the prior written permission of Living Villages Magazine. You may not distribute, display or copy any of the contents of the pages contained in this magazine to third parties without the prior written permission of Living Villages Magazine. All images shown in this magazine are the property of Living Villages Magazine unless otherwise accredited to another. Images may not be used without the prior written permission of Living Villages Magazine or the accredited owner. Unless otherwise specified, the authors of the literary and artistic works in the pages in this magazine have asserted their moral right pursuant to Section 77 of the Copyright Designs and Patents Act 1988 to be identified as the author of those works. If permission is sort and given, it is expected that all articles/images be accredited to either Living Villages Magazine or the author of said articles/images. The views expressed in articles published are strictly those of the writer, and not of Living Villages. Living Villages cannot vouch for products and services advertised, nor accept any liability resulting from the purchasing of product services, although care is taken to ensure their suitability.

NEED A LOCAL PLUMBER?

PlumbCall Plumbing & heating
Same day / next day service!

- Gas, Electric, Oil, LPG & Solar
- Central heating: Full design & installation
- High efficiency boilers
- Boiler / combi replacements
- Central heating, boiler breakdown & plumbing aftercare
- Underfloor heating specialist
- Power flushing
- Landlord certificates
- Free estimating service
- Annual servicing
- All work guaranteed
- OFTEC Registered

12 year manufacturer's guarantee on selected boilers
(Terms & Conditions apply)

CALL US TODAY!

01733 243 047

or 07860 257 803

E: advice@plumb-call.co.uk

W: www.plumb-call.co.uk

Gas Safe Register No.8494
LPG Registered



*subject to acceptance terms and conditions apply



NORTON RICKETT

Local *Independent* Estate Agents

- Free Market Appraisals
- Probate Valuations (RICS Surveyor)
- Local – Office near Wansford
- Established & Trusted since 2012
- Advertising on Rightmove
- Office Presence in London

10
YEAR
ANNIVERSARY

www.nortonrickett.co.uk

01780 782 999



Crown

Property Services

-  Electrical & Plumbing
-  Kitchens & Bathrooms
-  Renovations
-  Extensions
-  Windows & Doors
-  Groundworks
-  Landscaping
-  Internal Refurbishment

Old Sulehay Cottages, Sulehay Road, Wansford, PE8 6PA

07766 168659

jonathon@hibbins.me

Village Pizzas

Open Tue – Sat for
Collection / Eat-In at
Leedsgate Farm
4.30pm – 10pm
Or
Delivery 6pm till 10pm

01780 784587

View our Menu at
www.villagepizzas.co.uk



Mat based Pilates and Chairotics
Classes for all levels

MAT BASED PILATES

1 hr classes

Online on Zoom, or in person at
Christie Village Hall (Wansford) and Harringworth Village Hall

Monday, Tuesday, Wednesday and Thursday
£3.50 online / £6 in person



Ease back pain
Strengthen your core, abs and back
Improve sports performance
Exercise without joint pain
Increase your flexibility
Boost brain power and focus

Christie Village Hall:
18:00 Monday /
12:30 Wednesday / 18:00 Thursday
Online:
16:45 Monday / 11:30 Thursday
11:00 & 12:30 Tuesday

Justine Bromage
Fully Qualified Level 3 Pilates Instructor
Level 3 Personal Trainer
RSA to Music Instructor

Justine
BROMAGE FITNESS

justwhim@hotmail.com

07919 106156



Greenwood homecare

Do you need care visits at home?

Greenwood Homecare
provides quality care
in Peterborough and
the surrounding areas

✓ FREE ASSESSMENT

 DAY, LIVE-IN OR NIGHT
CARE AVAILABLE



FOR MORE INFORMATION

Visit: Greenwoodhomecare.co.uk

Email: Peterborough@greenwoodhomecare.co.uk

Call: **01733 808531**