

# *Living Villages*

Image taken by John Measures

*April 2023*  
*Water Newton Thornhaugh*  
*Stibbington Sutton Wansford*

## Tough decisions for UK investors

Forcing people to pay more tax on their hard-earned savings is not a popular policy for governments but it is something that UK investors face in the upcoming financial year after chancellor Jeremy Hunt confirmed a reduction to the capital gains allowance from April.

For investors, the most obvious effect on their savings is that any investment held outside an ISA or pension will be subject to capital gains tax.

• **These tax hikes mean that owning assets outside of tax effective wrappers is getting more expensive. One option available to investors is the often overlooked 'Bed and ISA', which is when any savings held in a general investment account are transferred over to an ISA.**

If you're planning to gift assets to someone else, then it could be worth making use of your annual CGT allowance this year before it's reduced. Many people don't realise that you also owe capital gains tax on assets gifted to someone else.

• The gain is based on the market value at the time of the gift but tax planning decisions are complicated and it's important not to let the tax tail wag the financial planning dog."

**Simon Every AwPETR Adv DipFA Chartered ALIBF - Hill Grafford**

*Is it time to consider how your assets are invested?*

### Our Aim at Hill Grafford

To be there as an expert who knows you and your family personally to the extent that we can customise a financial plan that exactly fits your personal requirements.

We provide Holistic Advice on

- Long term care investment solutions
- Pension & investments
- Offshore and onshore tax planning
- Inheritance tax solutions
- Setting up of Trusts based investment solutions

## We're here to help.

We were rated a Top Rated Financial Adviser for 2020 and 2021 - as distributed in The Times

Speak to one of our Local Chartered Financial Advisers today on

**01780 784310 or 07967 015 805**

**[www.hillgrafford.co.uk](http://www.hillgrafford.co.uk)**

A copy of client reviews can be emailed upon request.



## Editorial

Dear readers

Unfortunately crime is an issue in this month's edition of Living Villages. Overleaf there are some alarming statistics on cyber-crime from Safe Local Trades, and on page 17, much closer to home, locals are asked to be vigilant on behalf of Wansford in England Cricket Club, who have suffered vandalism recent months.

Luckily there are brighter articles and contributions, including the lighting of the community beacon in Wansford to commemorate King Charles III coronation (page 23) and a St George's Day concert at Nassington Church (page 21). Plus the usual round up of clubs and societies, news from Stibbington Royal British Legion and Thornhaugh Litter Pick on page 19, and a summary of the King's Cliffe Surgery Spring Newsletter on page 20.

Our thanks as always to all the contributors, advertisers and distributors for all they do, and finally as mentioned last month, we will soon be looking for a new distributor to take over the New Lane and Sibson Aerodrome area, so if you are interested please get in touch - our contact details are at the back of the magazine.

Best wishes

Craig

### Contents

6	Worship & Benefices
10	Stibbington and Wansford W.I.
16	Parish Council Notices and Minutes
25	Wansford Horticultural & Craft Society
30	Contacts

### Studying for a course?- Did you know you can apply for a grant?

Since the early 1990s the **Reverend Thomas Woolsey's Charity** has been giving for equipment to all students from Thornhaugh and Wansford for further education, apprenticeship or skills.

The Trustees of the charity will be meeting in September to allocate the grants, so there is plenty of time for any student to apply. Go to the website [thewoolseycharity.co.uk](http://thewoolseycharity.co.uk) to for more information and complete the application form.

Lisa Chambers, Secretary, Rev. Thomas Woolsey's Charity

## National crackdown in UK's biggest ever fraud operation

NONE of us like the thought of our friends, family or ourselves being scammed, and duped into parting with cash or even personal security information. Rogue traders, hi-tech scammers, or cowboy service operators can catch even the wariest of people off their guard; often appearing to be genuine, professional or authoritative.

Scams are becoming more and more sophisticated, but there has recently been some great strides made in the ongoing fight against fraud. According to Action Fraud, 142 arrests have been made in the UK's biggest ever fraud operation led by the Metropolitan Police – resulting in an international one stop spoofing shop being taken down.

More than 200,000 potential victims in this country alone have been directly targeted through the fraud website iSpoof in recent weeks. At one stage, almost 20 people every minute of the day were being contacted by scammers hiding behind false identities using the site. They posed as representatives of banks including Barclays, Santander, HSBC, Lloyds, Halifax, First Direct, Natwest, Nationwide and TSB. iSpoof enabled criminals to appear as if they were calling from banks, tax offices and other official bodies as they attempted to defraud victims. Victims are believed to have lost tens of millions of pounds while those behind the site earned almost £3.2 million in one 20-month period. iSpoof allowed users, who paid for the service in Bitcoin, to disguise their phone number so it appeared they were calling from a trusted source. This process is known as 'spoofing'. Criminals attempt to trick people into handing over money or providing sensitive information such as one time pass codes to bank accounts.

The average loss from those who reported being targeted is believed to be £10,000. In the 12 months until August 2022 around 10 million fraudulent calls were made globally via iSpoof, with around 3.5 million of those made in the UK. Of those, 350,000 calls lasted more than one minute and were made to 200,000 individuals. Losses reported to Action Fraud as a result of the calls and texts via iSpoof is around £48 million. Because fraud is vastly underreported, the full amount is believed to be much higher.

So please don't forget that you can report fraud or cybercrime to Action Fraud any time of the day or night using the online reporting tool – visit [www.actionfraud.police.uk](http://www.actionfraud.police.uk) Reporting online is quick and easy. The tool will guide you through simple questions to identify what has happened and our advisors are available 24- hours to give you help and advice if you need it.

You can also report to Action Fraud by calling 0300 123 2040 Monday to Friday 8am - 8pm.

### Tips on preventing cybercrime:

- Keep your software updated
- Enable your system firewall
- Use different / strong passwords
- Use two factor authentication on your online services
- Monitor your children's online activities
- Shop only from secure and well-known websites
- Activate your email's anti-spam blocking feature.

Eileen Le Voi  
Safe Local Trades



Recommended & Approved  
Much more than just a recommendation ...



# NEED A RECOMMENDATION?

The **ONLY** Police Checked recommended register of local approved traders

**FREE** and **EASY** service



Much more than just a recommendation ...

## Serving the PE Postcode community since 2008

Over 70 different trade categories and over 17,000 reviews

Here are some of our members ...

### New Garage Door & Repairs

**GARAGE DOOR & SHUTTER SERVICES**  
www.garagedoorandshutterservices.co.uk  
Call Dave on  
☎ **07709 337647**

### Electrician

**OLD COURT ELECTRICAL**  
www.oldcourtelectrical.co.uk  
Call David on  
☎ **07973 507420**

### Carpet & Upholstery Cleaning

**STAINBUSTERS**  
CARPET CLEANERS PETERBOROUGH  
www.peterborough-carpetcleaners.co.uk  
Call Steve on  
☎ **07818 058490**

### Building & Carpentry Services

**Steve Deprez & Son**  
Building • Brickwork • Carpentry  
Preserving the past. Building the future.  
stevedeprezbuilders@gmail.com  
Call Steve on  
☎ **07414 292188**

### Driveways, Patios & Hard Landscaping

**STYLE**  
HOME IMPROVEMENTS LTD  
www.styleimprovements.com  
Call Tony on  
☎ **07879 881315**

### Gutter Cleaning & Repairs

**THE GUTTER CLEAN COMPANY**  
www.guttercleancompany.com  
Call Jeremy on  
☎ **0800 179 9363**

### Double Glazing Repairs

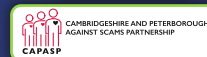
**Nene Valley UPVC**  
REPAIR & MAINTENANCE  
www.nenevalleyupvcrepairs.co.uk  
Call Andrew on  
☎ **01733 576397**

Thousands of Reviews



**Keeping it Local**

in association with ...



To see our full list of members and read all reviews just go to ...

**www.safelocaltrades.com**  
☎ **0800 014 1832**



The safest way to source local traders

Tear out page and keep



# WORSHIP DATES

Every Sunday 5.00pm - Zoom 'At Home' Service. Log in and phone details from Rev. Jane [jdtaiby@aol.com](mailto:jdtaiby@aol.com) 01780 782271

## St. Leonard's, Apethorpe

2 <sup>nd</sup>	11.00 a.m.	Holy Communion Palm Sunday
7 <sup>th</sup>	10.00 a.m.	Good Friday Service
9 <sup>th</sup>	11.00 a.m.	Easter Day Communion
16 <sup>th</sup>	11.00 a.m.	Holy Communion

## St. Mary's and All Saints, Nassington

Every Thursday 9.30 a.m. Holy Communion BCP		
2nd	8.15 a.m.	Holy Communion BCP
2nd	9.30 a.m.	Holy Communion Palm Sunday
6 <sup>th</sup>	6.00 p.m.	Maundy Thursday Service
7 <sup>th</sup>	1.00 p.m.	Good Friday Service
9 <sup>th</sup>	9.30 a.m.	Easter Day Communion
16 <sup>th</sup>	9.30 a.m.	Holy Communion
23 <sup>rd</sup>	9.30 a.m.	Family Service and Crafts
30 <sup>th</sup>	10.00 a.m.	Benefice Holy Communion

## St. Andrew's, Thornhaugh

2 <sup>nd</sup>	9.30 a.m.	Palm Sunday Procession and Family Service
7 <sup>th</sup>	1.00 p.m.	Good Friday Service
16 <sup>th</sup>	9.30 a.m.	Holy Communion

## St. Mary's, Wansford

Every Wednesday 10.00 a.m. Morning Prayer		
9 <sup>th</sup>	9.30 a.m.	Easter Day Communion
23 <sup>rd</sup>	9.30 a.m.	Holy Communion

## St. Mary's, Woodnewton

2 <sup>nd</sup>	9.30 a.m.	Holy Communion for Palm Sunday
7 <sup>th</sup>	2.00 p.m.	Good Friday Service
9 <sup>th</sup>	9.30 a.m.	Easter Day Communion
16 <sup>th</sup>	9.30 a.m.	Holy Communion
23 <sup>rd</sup>	8.30 a.m.	Holy Communion BCP

## St. Mary Magdalene's, Yarwell

7 <sup>th</sup>	12 noon	Good Friday Service
9 <sup>th</sup>	11.00 a.m.	Easter Day Communion
16 <sup>th</sup>	3.00 p.m.	Methodist Service
23 <sup>rd</sup>	11.00 a.m.	Holy Communion



**Suk's Sensations**

Learn to cook delicious authentic Indian curries  
using fresh ingredients and real Indian spices

"Hi, I'm Suk and I will be providing 2 hour demonstration sessions at my home in Sutton for small groups focussing on different recipes in each session. It will be good opportunity to learn new skills and meet new people in a relaxed informal atmosphere. You will also learn how to cook delicious and cost effective vegan and vegetarian recipes, allowing you to feed your family for less! I will be happy to include any special requests and favourite recipes and will provide a small takeaway box for each person after each session. Refreshments will also be included during each session"

**Impress your family and friends with your own home cooked curries!**

Please call Suk on **07778 517045** for bookings and further enquires

## REFLECTIONS

As I write this the blackthorn is in full bloom, and yes, we certainly had a “blackthorn winter” this year with all the snow and sleet! Gradually the trees will be putting forth new leaves and it will be a relief to see the new growth after the winter. Trees through the winter can look almost dead, but we know new life will come, and indeed that in the midst of the branches and trunks there is still much life in the form of insects, small mammals and the like, that take refuge during the colder months.

As April brings Holy Week and Easter, our newly blossoming trees seem to be a good image for our Easter hope. What seems hopeless will bring new hope, and where there seems to be nothing there is in fact hidden life. Recalling the image of Christ on the cross, all the hopes of so many seemed to be cut off, but three days later, new life burst from the tomb.

There seems to be so much to be anxious about at the moment, in individual lives and in our world; hopes seem to be dashed and life changed. May the Easter hope bring encouragement and may we seek the signs of life that are with us now, in simple acts of kindness and support, no matter how hidden they are. Happy and blessed Easter!

With every blessing,

*Rev. Jane*



### **A date for your diary!**

Palm Sunday this year falls on 2<sup>nd</sup> April. To mark the day we will be holding a special Palm Sunday Procession through Thornhaugh, from the “triangle” where the village sign is, down to the church for a family service. All are welcome – do come and join us!

## CASTOR BENEFICE

We are still maintaining the following service pattern every Sunday in each of our **Parish churches** until further notice.  
**Marholm** 9.00am - Holy Communion (Morning Prayer on 4th Sunday)  
**Castor** 8.00am Holy Communion (said service) 10.15am - Sung Eucharist  
**Sutton** 9.00am on 4th Sunday of the month - Holy Communion  
 Every **Wednesday** morning at **10am** there is a service of Holy Communion at **Castor**.

We still continue to celebrate **Evensong via Zoom at 6pm every Sunday**, if you wish to join us please contact the Benefice office for the Zoom link and access code.  
[admin.castor@btconnect.com](mailto:admin.castor@btconnect.com)

The next service at St. John the Baptist, Stibbington will be on **Easter Day, Sunday the 9th April at 6pm**, see separate poster.

**David Ridgeway**

**OUR NEXT SERVICE AT**

**ST. JOHN THE BAPTIST  
STIBBINGTON  
WILL BE**

HOLY COMMUNION  
ON

EASTER DAY 9th APRIL AT 6.00pm



Refreshments will be served after the service, do come and join us, you will be assured of a very warm welcome.

### Holy Week and Easter Services in Castor and Stibbington

**Sunday 2nd April – Palm Sunday** - Sung Communion 10:15 am with Procession from Castor School

**Monday 3rd April – Compline** (Night Prayer) a lovely plainsong service sung by the choir - 7:45 pm

**Thursday 6th April – Maundy Thursday** - Sung Communion – remembering the Last Supper and Jesus' washing his disciples' feet - 7.45pm

**Good Friday 7th April – Service of the Last Hour** – a reflective service remembering Jesus' crucifixion and death - 2 pm

**Saturday 8th April – The Easter Vigil** - Lighting of the Easter fire 7:45 pm

**Easter Day – Sunday 9th April – Festal Sung Communion** 10:15 am - celebrating Christ's Resurrection – a truly joyful occasion and the most important day of the Church's year.

**EASTER DAY Service in Stibbington – Sunday 9th April – 6.00pm** Holy Communion



Why are you paying so much for your Glasses?

# EyeSpecs

will save you up to £200  
on High Street prices!

- ◆ Exclusive frame range
- ◆ Specialist lens manufacturers
- ◆ Sunglasses and sports eyewear
- ◆ 40 years' ophthalmic experience
- ◆ Unrivalled customer service



10%  
extra discount  
with this  
advert

## EyeSpecs

25 Edison Road, St. Ives, Cambs PE27 3LF  
info@eyespecsuk.com www.eyespecsuk.com  
Tel: 01480 499606

Call us now  
or drop in  
today!

Open Monday to Friday 9-5  
Saturday 9-1 (by appointment)

PARKING AVAILABLE

## PIANO LESSONS IN PETERBOROUGH

Ann Burden ALCM PGCert BSC(Hons)

Please contact [annburden684@msn.com](mailto:annburden684@msn.com) or ring 07702363337

QUALIFIED EXPERIENCED TEACHER

No experience is necessary. I can teach you to play for pleasure or towards an exam; I currently work for the London College of Music. Lessons are tailored to your requirements.

If you would like to take up a new hobby or rekindle an old one I would love to hear from you. I am happy to take children from the age of three upwards and there is no age ceiling.

I teach a wide range of instruments primarily piano, keyboard, guitar, violin, clarinet and saxophone. Other instruments are also available so please feel free to contact me with requests. I also teach music theory.

\*\*Online classes also available\*\*



## STIBBINGTON & WANSFORD WI

### Today's women working for tomorrow's world



Julie Bickerton founder of Nomad therapy, was our speaker for our March meeting. Julie is an experienced yoga teacher based in Stamford. She teaches a wide range of classes focussing on the needs of the group, from pregnancy through to family yoga, as well as well woman yoga. It was during her 15 years of teaching and her own experiences that Julie researched pelvic floor health; for

women and men of all ages.

The session started with Julie explaining the importance of the pelvic floor, a complex, interconnecting layer made from 40+ muscles, and the changes it may go through as we age.

Julie then took us through breathing exercises to allow a greater understanding of how the muscles work together. We then went through a number of chair/ standing yoga techniques which focus on the improvement of our pelvic floor health. Julie highlighted that it is not only women that experience changes in their pelvic floor, but men will also undergo changes as they age.

The first few meetings of the year will be held in Wansford Community hall, if you wish to attend one of our upcoming meetings to hear one of our visiting speakers, please get in touch.

Please see below for our up, coming events:

**Tuesday 11th April 2023, 7pm** W.I. meeting Wansford Community hall. Speaker Dr. Janet Clarke – The Autism Spectrum.

**Tuesday 4th & 18th April 2023, 2-4pm** Coffee & Craft club, at Wansford Community Hall

**Thursday 25th May 2023, 7.30pm** Book Club meeting, at The Cross Keys Wansford

Both the Coffee & Craft club, and Book Club are open to all, not just for WI members, and we look forward to others joining us.

At last.....

# OAKLEY

Sports Eyewear

*At amazing prices!*

Complete with your prescription - for better vision and better performance

Specialist sports and leisure prescription eyewear available for road and cross-country running, fishing, gaming and everything else.

- Specialist lens manufacturers
- 40 years' ophthalmic experience
- Unrivalled customer service



PRIZM™ Technology and high quality Plutonite prescription lenses



Clearer vision in sunlight with more detail and contrast in all conditions

## EyeSpecs

25 Edison Road, St. Ives, Cambs PE27 3LF  
 Open Monday to Friday 9-5  
 Saturday 9-1 (by appointment)  
 PARKING AVAILABLE

Tel: 01480 499606  
 info@eyespecsuk.com  
 www.eyespecsuk.com



Transitions™ PRIZM™ Field and Gen8™ - lens types to meet your every need

**Call us now or drop in today!**



### Podiatry & Chiropody

Cracked Heels, Corns, Diabetic Foot Care,  
 Calluses, Hard Skin, Verrucae Treatments;  
 Biomechanics & Orthotics  
 Nail Surgery, Ingrown Nails,  
 Cryo Aesthetics for Skin Lesions,  
 Wilde Pedique Nail Reconstruction

**01780 782200**

Home Visits Available

Sue Arnold BSc(Hons) MRCPod & Associates  
 19 Elton Road, Wansford, PE8 6JD  
 wansfordinstep@gmail.com



### Ear Wax Microsuction

Ear Ache? Hearing Loss? Blocked Ears?  
 Need A Pre Hearing Test Clean?  
*It could just be wax!*



# OVER 50 YEARS EXPERIENCE

Car buying as it should be; simplistic, with no admin fees, no pressure and a wealth of knowledge to help you find your dream car.

**Great part exchange prices given**

**Finance from as low as 6.9%**

**[www.heartysofpeterborough.co.uk](http://www.heartysofpeterborough.co.uk)**

**01733 560605**

**[sales@heartysofpeterborough.co.uk](mailto:sales@heartysofpeterborough.co.uk)**



**HEARTYS**  
*of Peterborough*



*Beautiful curtains, blinds and soft furnishings designed and created to compliment your home.*

*For a free home consultation and quote call 07957686595*

*www.georginascurtainsandkeepsakes.com*

**Georgina's**  
Curtains & Keepsakes



**MOBILE HAIRDRESSING**

Ladies & gents hairdresser with over 30 years experience.

If you are housebound, have reduced mobility, no transport or simply prefer the convenience of having your hair done at home, I have daytime appointments available. Fully insured. Competitive prices.

**Please call Tracey on 01780 782467**



**Woodland Timber Products**

Fencing, Play Houses, Gates  
Pet Housing, Sheds



**01780 783983**



Unit 4, Leedsgate Farm Business Park,  
Kings Cliffe Road. Wansford PE8 6NX.  
07748 787360  
[woodlandtimber.products@yahoo.com](mailto:woodlandtimber.products@yahoo.com)



*polished*  
NAILS & BEAUTY



Award winning nail and beauty professional, providing luxurious treatments from a relaxed setting

**TREATMENTS AVAILABLE**

- Manicures & pedicures
- Gel polish
- Footlogix medi-pedi
- Nail rehabilitation
- Bespoke nail art
- Nail extensions
- Eyelash extensions
- Facial waxing
- Tinting
- LVL (lash lift & tint)
- IBX nail strengthening & repairing



phone 07811 057715  
email [hello@polished-nailsandbeauty.co.uk](mailto:hello@polished-nailsandbeauty.co.uk)

website [www.polished-nailsandbeauty.co.uk](http://www.polished-nailsandbeauty.co.uk)  
Find us on Facebook @polishednailsandbeautyuk

THE HAYCOCK MANOR HOTEL, WANSFORD, PETERBOROUGH, PE8 6JA

## THE CHRISTIE HALL

Elton Road, Wansford  
(registered charity no 1033998)

A well-equipped hall  
with large kitchen and parking.

**Available for parties,  
receptions,  
meetings,  
activity groups  
and most types of private functions**



For more information  
and details on how to book  
visit our website

**[www.christiehall.co.uk](http://www.christiehall.co.uk)**

## PAWS AND CLAWS



### Boarding Cattery

*"Cats have a 'tail' to tell when they've 'paws'd'  
awhile at Wansford's 5 Star Purr Palace"*

Tel 01780 782174

e-mail

[pawsandclaws@hotmail.com](mailto:pawsandclaws@hotmail.com)

Working with Peterborough Cat Rescue to rehome cats  
and kittens seeking loving homes and laps on which to purr

Peterborough City Council & Rutland County Council  
Licence Number: 078015

## WHO LET THE MEN OUT?



A chance for all men from our local villages to meet  
and socialise over a tasty breakfast  
(Apthorpe, Woodnewton, Nassington, Yarwell,  
Wansford and Thornhaugh)

**Saturday 29<sup>th</sup> April 2023**

**8.30am – 10.00am**

The Willow and Brook, Apthorpe, PE8 5DG

Full English breakfast and guest speaker Philip  
Matson speaking all about Salt!

RSVP to help cater with approximate numbers or for any  
queries please contact Ian Scott

[mensbreakfast@btconnect.com](mailto:mensbreakfast@btconnect.com)

For more details please see the article in the local village magazines.



Registered  
Business



**jc heating**  
SERVICES

Oil boiler servicing and  
repairs, heating controls,  
hot water service and repairs.

Your local heating expert for  
over 15 years.

Jo Childs,

8 Black Swan Spinney,  
Wansford.

**Mob : 07729036942**



## Your trusted advisers

We provide individuals and businesses with a full range of accounting, audit, corporate and personal tax planning services.

- Audit and Accountancy
- Business Acquisitions and Disposals
- Business Plans and Projections
- Corporate and Personal Taxation
- Grant Funding
- MT Cloud Accounting
- Payroll, Bookkeeping and VAT
- Tax Planning and Mitigation

For more information,  
please contact us:

 **01733 560160**  
[moorethompson.co.uk](http://moorethompson.co.uk)

Peterborough | Spalding | Wisbech | Market Deeping



Moore Thompson is registered to carry on audit work in the UK by the Institute of Chartered Accountants in England and Wales.



## WANSFORD PARISH COUNCIL



Wansford Parish Council met on the 13th March 2023. A member of the public raised concerns that more work was needed on the A47/Old Leicester Road junction as accidents there continued. It was agreed that Wansford Parish Council would contact Peterborough City Council when more accident data had been compiled.

Discussion was held over the King's Coronation Celebrations as the plan to host a street party on Elton Road had come up against high costs and obstructive regulations from Cambridgeshire County Council. It was decided to replan the street party and seek alternative locations through liaison with Peterborough City Council - keep an eye out for upcoming plans!

Councillors agreed that we should proceed to provide more pleasant directional signs for walkers and visitors in certain parts of the village in keeping with the finger posts already installed. These would point to the Childrens' play area in Nene Close from Peterborough Road, direct walkers more clearly on the Nene Way to pass under the A1 to Sacrewell Farm and to Sutton village as well as a third sign showing walking routes from the north side of the bridge towards Wansford Weir. It was thought these would be tasteful additions to support existing signage.

On the topic of walkers and visitors, we are to have further discussions with the Wildlife Trust who manage access to Wansford and Standen Pastures to try and get better access for those with an interest in the flora and fauna which are protected in those areas, while providing sound access for walkers and dog walkers to pass by and continue on the public footpath. In addition to this, and keeping on the walking theme, Wansford Parish Council agreed to purchase a robust teak bench to be situated on Old Leicester Road near Robins Field to provide a resting place for those who were out and about.

Public transport through Wansford has been on the agenda a few times and we are urging residents to complete a survey which is available on the Wansford Parish Council website ([www.wansford-pc.gov.uk](http://www.wansford-pc.gov.uk)). There has to be a good level of demand in the village to have a sensible and timely bus service that is suitable for users across several villages, including Wittering where there is a large population without a service to Stamford or Peterborough. There is currently a bus operating first thing in the morning and one in the late afternoon but we would like to be in a position where user numbers are great enough to have a more regular service and to do so there has to be an increase in demand and usage. We believe this will be a lifeline to many.

Other matters arising were a couple of complaints or concerns raised by the speed of vehicles heading out of Wansford past Wansford Surgery's car park. This exit has a difficult sightline so it was agreed the village speed monitoring sign, which records how many cars pass, would be positioned in a sensible location to discourage speeding out of the village. The other matter was the condition of some pavements around the village, especially the grass encroachment, so the parish council would seek support from Peterborough City Council on this matter.

The meeting was quite buoyant and positive with many thoughts and suggestions being circulated during the discussion and we thank Cllr Elsey for all the matters that he could assist with.

The next meeting is on Monday **17th April 2023**, so please pop along as a member of the public if you have any views, suggestions or comments.

**Cllr Graham Stevens**

Wansford Parish Council



## Wansford in England Cricket Club

Having thrown off the evils of Covid at least for the 2022 season a full program of mid week and Sunday matches was enjoyed and 2023 promises to be its equal. We will be publishing our fixtures shortly and would be pleased to see local residents who want to enjoy a traditional Sunday entertainment watching a match in the Haycock field.

Over the very hot summer a lot of visitors were attracted to the village for swimming, boating and picnics. Unfortunately there were a number of undesirables who tried unsuccessfully to break into the pavilion and succeeding in damaging the wicket. The changing room roof was also affected and this has had some remedial work undertaken but will probably require a replacement roof panel to make it fully watertight. As far as the wicket is concerned the damage comprised tears and graffiti to the artificial grass cover making it in desperate need of replacement. The total cost of replacement is likely to be approximately £ 8500. Part of the cost will be met by our insurers with the balance coming from club funds and future fund raising efforts.

The cricket pitch is used regularly by many members of our community as a location for dog walking and I would be grateful if whilst using the area you could help us in keeping a watchful eye and if you see anyone misusing the pitch you could let me know.

**Paul Styles**  
Chairman  
07860278800



## Thornhaugh Litter Pick

Sadly just Tammy and myself the litter pick in March but we did a huge amount. The theme today was bags of human faeces hanging in trees (people are totally disgusting!), crash items, cones, signs, sandbags, tyres plus regular rubbish. Got back just before the rain . Hope you enjoy the sparkly A1.

**Next Thornhaugh Litter pick will be 20th May at 10.30 on The Village Triangle.**

Look out for info on Facebook. We would love more support please. More hands make light work. If you ever want to borrow equipment in between official litter picks please do get in touch.

Nikki@4stonecottage.co.uk  
Nikki Higgins



## SIBSON-CUM-STIBBINGTON PARISH COUNCIL

Sibson cum Stibbington Parish Council met on the **2nd March**.

Five Councillors were in attendance with apologies received from two members.

There were no members of the public present. This was due to the fact that, Cllr. Beuttell provided the wrong date in the previous edition of Living Villages, and wishes to extend her apologies to all concerned.

The minutes of the previous meeting of the 26th January, were approved and duly signed.

Payment was authorised for the Christie Hall Annual Rent.

Planning Applications – there was one new Application pertaining to the Boat House, Elton Road regarding replacement windows – no objections were raised.

Correspondence had been received confirming the installation of Double Yellow lines by the end of March – weather permitting. There was also a letter from Middle Level Commissioners requesting that residents should report any abandoned boats on the river. Contact name Kevin Russell on 07725 134170.

Cllr. Bradshaw made the Council aware that there had been an incident of unwanted gravel being “dumped” on a farmer’s driveway and then a significant payment being demanded. Cllr. Turner also reported that there had been an increase in fly tipping in the area, which Cllr Beuttell suggested would be reported to HDC. There was also a report of blocked drains in New Lane, together with the fact that the “potholes” which have been repaired are now in need of further attention. This will be reported to our Local Highways Officer.

The Coronation of King Charles III was discussed and it was decided that we would apply for the closure of Elton Road for this event.

Cllr. Beuttell thanked Councillors for attending and confirmed the next PC meeting will be on the **4th May at 7pm**.

**Since the conclusion of the meeting above, an application was made to close Elton Road, on the 7th May. The costs quoted to enable this were precipitative to say the least, £4000 - £5000, and it has therefore been decided by Sibson-cum-Stibbington to abandon the closure of the street, in conjunction with Wansford Parish Council.**

## THORNHAUGH PARISH COUNCIL

The next Thornhaugh Parish Council Meeting will take place at **7.00 pm on 15th May 2023 in St Andrew’s Church**. Details will appear in a future edition of Living Villages Magazine.

## Royal British Legion Entry - Stibbington and District Branch

**The Stibbington and District Branch** has been unable to form a committee for some time now. I have discussed the situation with your branch President, Sue Arnold, and we have agreed that the only way to prevent the branch from closing is for the branch to become a County Supported Branch (CSB).

As a CSB, the branch's funds will be held by the county treasurer, and they will be ring-fenced for use by the Stibbington and District branch. There will be two points of contact, who must be contactable by email, and they must give their agreement for branch funds to be used. The branch will keep its standard, which is currently in Sue's possession, and that can be paraded on suitable occasions, e.g., Remembrance Sunday, on the authority of the two points of contact.

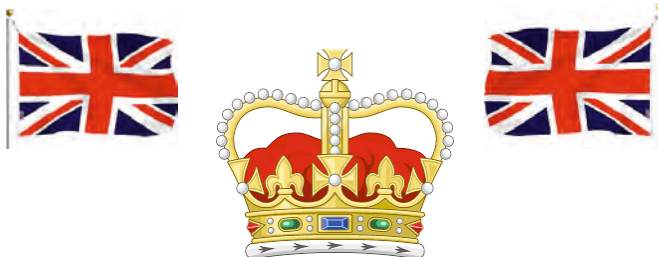
Sue Arnold has agreed to be one of the two email contacts and we do require at least one other person to agree to be a point of contact – you must be contactable by email. There are no formal duties to be carried out other than to authorise any expenditure of branch funds and authorise use of the branch standard – this can all be done by email.

Your Royal British Legion membership is not affected by this change of branch status.

If you have any questions concerning this change of status, please contact me, or Sue (suearnold474@gmail.com) or our Membership Engagement Officer, Juliet Larham, jlarham@britishlegion.org.uk.

Yours sincerely

**Alan Scott**  
County Chairman



### **KING CHARLES III CORONATION**

**BOTH SIBSON-CUM-STIBBINGTON AND WANSFORD PARISH COUNCILS ARE DELIGHTED TO ANNOUNCE THE PLANNING OF A STREET PARTY ON SUNDAY 7<sup>TH</sup> MAY, TO CELEBRATE THE CORONATION OF KING CHARLES III.**

**THE STREET FROM BRIDGE END THROUGH PART OF ELTON ROAD WILL BE CLOSED TO TRAFFIC TO ALLOW CELEBRATIONS TO TAKE PLACE. THIS WILL INCLUDE ENTERTAINMENT, FOOD AND REFRESHMENTS.**

**FURTHER DETAILS WILL FOLLOW AND WE ASK ALL OUR RESIDENTS TO KEEP THE DATE IN THEIR DIARY.**

## WANSFORD AND KINGS CLIFFE PRACTICE - SPRING 2023

We are sad to say farewell to Dr Rosie Atterton who is leaving us for pastures new. However, we welcome **Dr Dan Petrie** who has joined us from Stamford. He is a welcome addition to our clinical team.

We also welcome **Dr Sophie Reiter** who joined the team earlier this month.

### PRACTICE LIST SIZE

Our list size has grown considerably over the last 3-4 years. We now have almost 10,000 patients. We have therefore closed our list to out of area new registrations. Existing patients who move outside our boundary will need to register with another GP

Practice. You can check your address on our website here

<https://www.wansfordsurgery.co.uk/practice-information/new-patients/catchment-area/>

We have taken on more clinical and administrative staff to accommodate our increasing patient numbers.



### ZERO TOLERANCE

We have noticed an increase in verbal abuse to our reception staff. They are doing a very difficult job and they do so within the parameters of what we have to offer. They do not block you from seeing a doctor, they work within strict guidelines set down by the partners and doctors at the surgery. They will often signpost to the most appropriate service or clinician, this is not always a GP. They are trained to ask the nature of the ailment in order to do this. They adhere to our strict confidentiality policy and will not divulge any information to third parties. In addition they will not give any patient information to anyone other than the patient themselves unless we have written agreement to do so.

### WANSFORD RESEARCH UPDATE

The team have several new studies in the pipeline for the year ahead and more details will be released in due course.

Over the coming months we may be sending out some information via text messages or email if we think you may be suitable to join a study. Please do message us back if you are interested - its purely voluntary.

In the meantime if you would like to register your name at our site on a general level to be added to a waiting list for interest in research studies then please do that now. You can email:

[laura.costello3@nhs.net](mailto:laura.costello3@nhs.net) or you can phone and leave a message on 01780 781623.

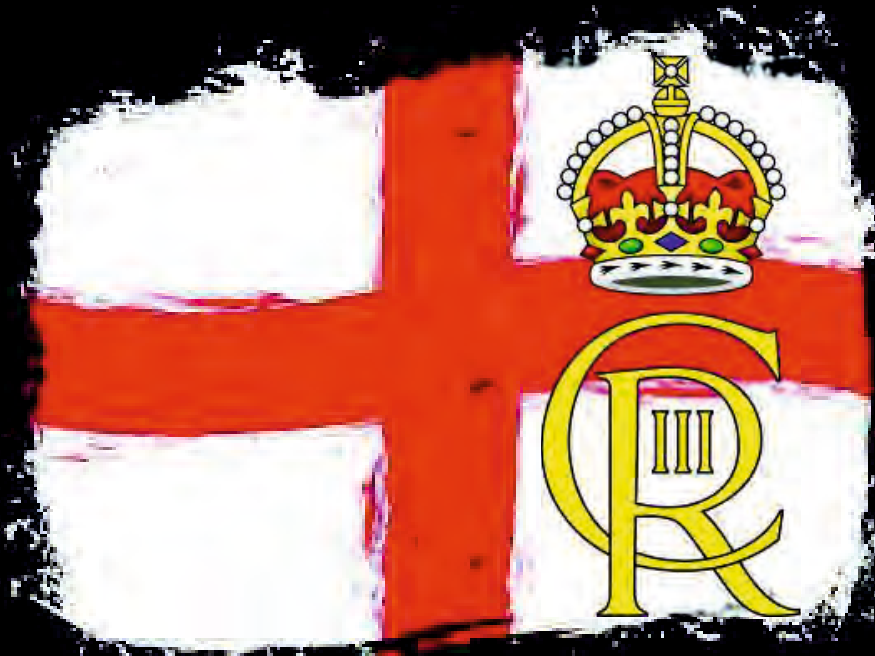


The Research Team  
(left to right: Ash, Paula, Lorraine, Laura)

**A full copy of the Spring Newsletter is available from the surgery**

# Yarwell & Nassington Britannia Band

*featuring* Elton School Band



## St George's Day Concert

# *A Royal Occasion*

**Friday 21st April 2023**  
**Nassington Church**

Doors open 7:00pm Starts 7:45pm Bar and Raffle . Tickets £10

Tickets available from: Nassington Stores, Mould's Butchers, Band Members,  
01780 782200

# PennyYoga

## Be a Better Version of Yourself

Be more flexible, stronger and calmer with Yoga

Small friendly groups welcome all levels, ages & fitness.

Morning & Evening sessions Mondays, Tuesdays and Thursdays

Contact Penny today - 07960267986 pennyyoga@yahoo.co.uk

# PETER RIDDINGTON LANDSCAPING

We supply and install Patios & Pathways, Decking, Stone Walls and Fencing, We plant Trees, Shrubs Hedges and Flowers, and offer a complete Garden Maintenance and Improvement Service. Garden design service provided  
Contact Peter Riddington today for a free quotation

4 LOCKS GREEN, YARWELL, PETERBOROUGH PE8 6PY  
Telephone: 01780 783004 Mobile: 07860 962068  
Email: peter@peterriddington.co.uk



## New Luxury Care Home



### Castor Lodge Care Home

At Castor Lodge, our care is the kind we would want all of our loved ones to receive. Offering residential and dementia care, our dedicated team make life comfortable and enjoyable for all our residents, allowing them to live safely and as they choose. Our brand new home is luxurious and beautifully furnished, whilst retaining a warm family atmosphere that makes Castor Lodge feel extra special.

- 68 Spacious en-suite bedrooms
- 6 Premium self-contained suites
- Bistro Café and themed pub
- Sociable lounge and dining areas
- Roof terrace and landscaped gardens
- Hair and pamper salon
- Daily fine dining
- Tailored meaningful activities

To find out more about life at Castor Lodge contact our Customer Relations Manager Laura Mills on 07725 799 217 or email [laura.mills@countrycourtcare.com](mailto:laura.mills@countrycourtcare.com)

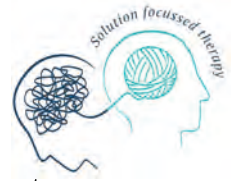




The Chairman of  
Wansford Parish Council cordially invites  
the people of Wansford and neighbours  
to join him with fellow parish councillors for the lighting of the  
community's Beacon in celebration of the  
Coronation of King Charles III  
to take place at  
The Stables, Old Leicester Road, Wansford  
on Saturday, 6 May at 8 pm.  
A complimentary glass of wine/beer/soft drink will be offered



*Would you like to be happier,  
rediscover your smile,  
reconnect with what is important to you?*



Solution focussed hypnotherapy can support you to overcome your issues and be more positive. You shouldn't have to struggle with any of these:

Anxiety X Depression X Sleep problems X Weight management  
PTSD X Confidence X Phobias X Trauma X OCD

If you want to take back control of your life, reach out for a little support. **The initial consultation is free** with no obligation, so you can find out exactly what is involved and how it can help you.

Sessions can be in person  
in Peterborough or via video call.



Call Tim on 07904 515077 ✉ [info@timjhhypnotherapy.co.uk](mailto:info@timjhhypnotherapy.co.uk)

Find out more on Facebook at Tim JH Hypnotherapy



**Just ask**

Making the right decisions can be stressful at the best of times, but we are here to help. Whatever's on your mind, just ask.

**TOBIAS COLTON** (BA)(Hons) DipPFS  
Principal  
**TOBIAS COLTON WEALTH MANAGEMENT**  
Associate Partner Practice of St. James's Place Wealth Management  
07468 428 380  
[tobias.colton@sjpp.co.uk](mailto:tobias.colton@sjpp.co.uk)  
[www.tobiascoltonwealthmanagement.co.uk](http://www.tobiascoltonwealthmanagement.co.uk)



  
**ST. JAMES'S PLACE**  
WEALTH MANAGEMENT

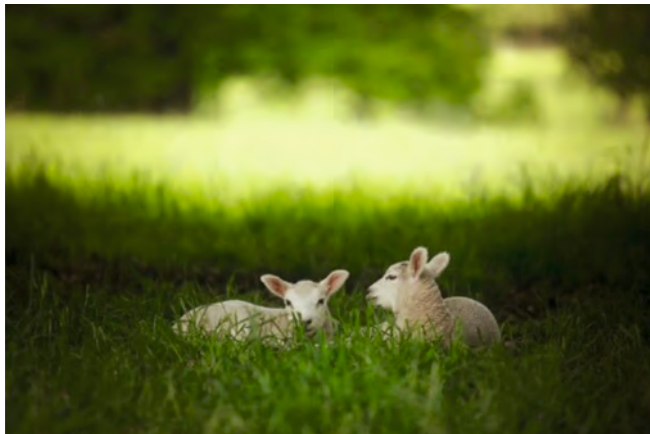
The Partner Practice is an Appointed Representative of and represents only St. James's Place Wealth Management plc (which is authorised and regulated by the Financial Conduct Authority) for the purpose of advising solely on the group's wealth management products and services, more details of which are set out on the group's website [www.sjp.co.uk/products](http://www.sjp.co.uk/products).  
The 'St. James's Place Partnership' and the titles 'Partner' and 'Partner Practice' are marketing terms used to describe St. James's Place representatives.



## Wansford Horticultural & Craft Society

*Our Events are up and running*

**Free Plants.** Seed propagation is now in full flow and we are hopeful to have surplus seedlings for our Plant Sale at Goss Cottage starting for the Easter weekend. We expect to have a nice supply of tomato plants and sunflowers. Plants will be free with any donations to our charity, Sue Ryder, at your discretion. If you have any spare plants please let me know and I will collect.



**Sacrewell – Easter New Life on the Farm.** 1st - 9th April 2023, 9am - 4.30pm.

We have an exciting new partnership for those of you who like to take your children/grandchildren to Sacrewell Farm, a lovely place.

### **Enjoy plenty of sustainable Easter activities**

**Activities include:** Easter story time; Create a cardboard bird photo frame; Self-led egg trail around Sacrewell and reward; Create your own flower seed bomb; Make a kite with Roland our resident artist; Plant a bean seed and watch it grow

Our Horticultural Society are delighted to be supporting Sacrewell and help the children plant a bean and encourage Children to their beans into our Wansford Show. Please come along to Sacrewell and support.

Gary Punter (Chair)  
garypunter@aol.com



# FENLAND DISTRICT BROKERS LTD

Your business needs protection at so many levels.  
We can advise on full Insurance Coverage.  
Local, reliable and experienced.



**FOR ALL YOUR BUSINESS INSURANCE NEEDS**

0808 175 3050 | 22 Cecil Road, Peterborough | [www.fdbltd.co.uk](http://www.fdbltd.co.uk)

Fenland District Brokers Ltd are an Appointed Representative of Ten Insurance Service Ltd which is authorised and regulated by Financial Conduct Authority.

# tmk

TILES + INTERIORS

Carefully selected tiles from established UK, Italian and Spanish suppliers, all with style, quality and value in mind.



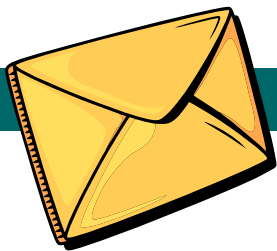
Station Road, St Ives, Cambs PE27 5BH



[tmktiles.co.uk](http://tmktiles.co.uk)



01480 266321



## LETTERS TO THE EDITOR

email [craig@ascotgraphics.co.uk](mailto:craig@ascotgraphics.co.uk)

Dear Craig,

I am writing with regard to the Stibbington Centre. There is mention of its possible closure in the March edition of Living Villages in the report of the Sibson-Cum-Stibbington Parish Council and also that questions were asked in the recent meeting about its future.

I would like to clarify that the centre is definitely closing at the end of the academic year. The recommendation was made by Cambridgeshire County Council's Children's Services to close the centre on financial grounds and on 17th January 2023 the Council's Children and Young People Committee gave their approval to move forwards with the closure. As yet, no information has been forthcoming regarding the future of the site, however, the school building itself is not a Grade II listed building, unlike the Old School House, Wash House and Pump next door and several other buildings in the locality.

I have been teaching at the centre for over 12 years and feel so privileged to spend time with visiting schools, both on residential and on day visits. And it's always a delight to collect WW2 evacuees from the NVR and to lead them across to Stibbington Village Board School via the church and Stibbington Hall. It's such a unique learning experience, where children become engrossed in the important issues of the past by being immersed in so much of the local history.

The Stibbington Centre will be hugely missed by the schools it has served for 40 years. Rosie Edwards, a former editor of Living Villages, was an inspirational head of the Centre for most of that time and I am so saddened to think of everything she worked so tirelessly to create in Stibbington should come to an end. And if developers take over the whole site, and the school building is not saved, the village would lose a most important part of its heritage.

I would like to take the opportunity to pass on my most sincere thanks to all who have supported the Stibbington Centre in so many ways. With the help of your incredible generosity over the years there are thousands of children and teachers who will never forget Stibbington and the wonderful variety of experiences they've shared here.

Yours sincerely,

Veronica Latham



## THE ARTS SOCIETY PETERBOROUGH

The Arts Society is a leading arts education organisation that brings people together through a shared curiosity for the arts. Each year The Arts Society Peterborough (TASP) holds nine illustrated talks given by experts in their field on subjects ranging widely, including old Masters, modern sculpture, silver jewellery, the work of David Hockney and music in art. The talks are held at The Fleet in Fletton Peterborough on the second Thursday of each month except June, July and August. The talks start at 10.45 am but you are welcome to come earlier and meet like-minded people for a chat over a cup of coffee. Non-members are always welcome and the first talk is free, so come and join us!

In addition to the live talks, annual members also receive other benefits. If you wish to find out more about our Society or about becoming a member, please visit our website, [www.the-arts-society-peterborough.org.uk](http://www.the-arts-society-peterborough.org.uk) Our next two talks are::

**13th April 2023**

### **The First Atlantic Liner - Brunel's Great Western, by Helen Doe.**

The first liner to establish a regular steam service across the Atlantic - the Concorde of its day carrying the rich and famous, including stars of the London stage.

**1st May 2023**

### **Music in Art, by Sophie Matthews.**

Many historical references for musical instruments exist in art. Sophie explores them and gives live demonstrations on replicas of the instruments depicted.



Your friendly, reliable and honest local heating experts

- |  |   |
|--|---|
| <input checked="" type="checkbox"/> Boiler repairs       | <input checked="" type="checkbox"/> Gas |
| <input checked="" type="checkbox"/> Emergency callouts   | <input checked="" type="checkbox"/> Oil |
| <input checked="" type="checkbox"/> Boiler installations | <input checked="" type="checkbox"/> LPG |



[www.fixfirstheating.co.uk](http://www.fixfirstheating.co.uk)

Call Chris Welch on 01733 315065/07856 518842  
or email [chris@fixfirstheating.co.uk](mailto:chris@fixfirstheating.co.uk)



## WANSFORD COMMUNITY HALL

Peterborough Road, Wansford

This hall accommodates parties of up to 36 people seated. Ideal for Meetings, Workshops, Aerobics etc

GREAT VALUE AT ONLY £4 per hour  
FOR BOOKINGS TELEPHONE  
John Stannage 07879 485330

Capitol Lettors



Your local property agent  
With over 30 years of  
experience  
Relocation, Lettings and Sales

Please call our office for a  
competitive quote

Peterborough - 01733 553366

(enquiries@capitollettors.com )

[www.capitollettors.com](http://www.capitollettors.com)

## BARKLEYS GARDEN SERVICES

Grass cutting, weeding,  
hedge trimming

Lady gardener  
available

Bev & Peter  
Ailsworth  
(01733) 380480  
07593721144



[beverlybarkley1@gmail.com](mailto:beverlybarkley1@gmail.com)

## GRIFFIN

Solid Fuel Merchant  
Supplier of Pre Packs

Coal Bunkers Charcoal Compost  
Flo Gas Logs & Sticks Salt

Coal Yard  
Station Road  
Nassington  
01780 782540

Office  
12 Church Hill  
Castor  
01733 380470



Dry carpet cleaning and upholstery  
cleaning services in Peterborough and  
the surrounding areas.

Whether you have an individual chair or  
carpet in a domestic property, or are  
interested in contract carpet cleaning in  
your business, you can benefit from our  
35 years experience.

Telephone: 01832 280429

Mobile: 07951 124374

Email: [info@bcnmulticlean.co.uk](mailto:info@bcnmulticlean.co.uk)



## PRIVATE YOGA WITH MARLENI

One-to-one yoga sessions in the comfort  
of your own home. Tailored exclusively to  
your needs and designed to fit around your  
strengths and abilities.

(Private small groups also available)

If you'd like to know more call

**07444 069 677**

[yogawithmarleni@gmail.com](mailto:yogawithmarleni@gmail.com)



# DIRECTORY OF CONTACTS

## For all enquiries, contributions and adverts

<b>Craig Bunday</b>	craig@ascotgraphics.co.uk	07771 538661
<b>Ascot accounts</b>	accounts@ascotgraphics.co.uk	01487 801301

## Parish Councils

Sutton	Deirdre McCumiskey (Clerk)	01780 782668
Wansford	Marie Lewis (Clerk)	07899 732049
Sibson-cum-Stibbington	Charlotte Newman (Clerk)	07962 226313
Thornhaugh	Deirdre McCumiskey (Clerk)	01780 782668
Water Newton (Parish Meeting)	Caroline Nathan (Chairman)	07989 362514

## City Councillor ( Wittering Ward) - Gavin Elsey

**07738930599**

## Churches

<b>Ministers:</b> Thornhaugh & Wansford		01780 782271
Stibbington, Sutton, Castor & Water Newton		01733 380900
	<a href="mailto:admin.castor@btconnect.com">admin.castor@btconnect.com</a>	

## Churchwardens:

St Andrew's Thornhaugh:	Stuart Foreman	01780 783220
	Liz Kemp	01780 782333
St Mary's Wansford:	Caroline Ashley	01780 782408
	Alan Jones	01780 783205
St John the Baptist, Stibbington	Charlotte Bradshaw	01780 781805

## Friends:

St Mary's & St Andrew's	Caroline Ashley	01780 782408
St Remigius Water Newton	Tony Capon	01733 237500

## Other useful contacts

Neighbourhood Policing 101		P'boro City Council	01733 747474
Wansford Surgery	01780 782342	Royal British Legion	01780 782200
(Out of hours	111 option 4)	Stibbington & Wansford WI .	.781733
Wansford Pharmacy	01780 781616	Cricket Club	07860 278800
Communicare	01780 470437	Horticultural Society	01780 592514
H'don District Council	01480 388388	Stibbington Centre	01780 782386

## Website

[www.livingvillagesmagazine.co.uk](http://www.livingvillagesmagazine.co.uk)

©2023 Living Villages Magazine The contents of this magazine may not be copied, reproduced, distributed, republished, downloaded, displayed, posted or transmitted in any form or by any means without the prior written permission of Living Villages Magazine. You may not distribute, display or copy any of the contents of the pages contained in this magazine to third parties without the prior written permission of Living Villages Magazine. All images shown in this magazine are the property of Living Villages Magazine unless otherwise accredited to another. Images may not be used without the prior written permission of Living Villages Magazine or the accredited owner. Unless otherwise specified, the authors of the literary and artistic works in the pages in this magazine have asserted their moral right pursuant to Section 77 of the Copyright Designs and Patents Act 1988 to be identified as the author of those works. If permission is sort and given, it is expected that all articles/images be accredited to either Living Villages Magazine or the author of said articles/images. The views expressed in articles published are strictly those of the writer, and not of Living Villages. Living Villages cannot vouch for products and services advertised, nor accept any liability resulting from the purchasing of product/sor services, although care is taken to ensure their suitability.

## NEED A LOCAL PLUMBER?

**PlumbCall** Plumbing & heating  
Same day / next day service!

- Gas, Electric, Oil, LPG & Solar
- Central heating: Full design & installation
- High efficiency boilers
- Boiler / combi replacements
- Central heating, boiler breakdown & plumbing aftercare
- Underfloor heating specialist
- Power flushing
- Landlord certificates
- Free estimating service
- Annual servicing
- All work guaranteed
- OFTEC Registered

**12 year manufacturer's guarantee on selected boilers**  
(Terms & Conditions apply)

**CALL US TODAY!**

**01733 243 047**

**or 07860 257 803**

E: [advice@plumb-call.co.uk](mailto:advice@plumb-call.co.uk)

W: [www.plumb-call.co.uk](http://www.plumb-call.co.uk)

Gas Safe Register No.8494  
LPG Registered



\*subject to acceptance terms and conditions apply



*“Achieving the best price for our clients is our highest priority”*

- Local
- Professional
- Experienced *Estate Agents*



[www.nortonrickett.co.uk](http://www.nortonrickett.co.uk)

**01780 782 999**



# Crown

## Property Services

-  Electrical & Plumbing
-  Kitchens & Bathrooms
-  Renovations
-  Extensions
-  Windows & Doors
-  Groundworks
-  Landscaping
-  Internal Refurbishment

Old Sulehay Cottages, Sulehay Road, Wansford, PE8 6PA

### 07766 168659

jonathon@hibbins.me

# Village Pizzas

Open Tue – Sat for  
Collection / Eat-In at  
Leedsgate Farm  
4.30pm – 10pm  
Or  
Delivery 6pm till 10pm

## 01780 784587

View our Menu at  
[www.villagepizzas.co.uk](http://www.villagepizzas.co.uk)



Mat based Pilates and Chairotics  
Classes for all levels

## MAT BASED PILATES

1 hr classes

Online on Zoom, or in person at  
Christie Village Hall (Wansford) and Harringworth Village Hall

Monday, Tuesday, Wednesday and Thursday  
£3.50 online / £6 in person



Ease back pain  
Strengthen your core, abs and back  
Improve sports performance  
Exercise without joint pain  
Increase your flexibility  
Boost brain power and focus

Christie Village Hall:  
18:00 Monday /  
12:30 Wednesday / 18:00 Thursday  
**Online:**  
16:45 Monday / 11:30 Thursday  
11:00 & 12:30 Tuesday

Justine Bromage  
Fully Qualified Level 3 Pilates Instructor  
Level 3 Personal Trainer  
RSA to Music Instructor

*Justine*  
BROMAGE FITNESS

[justwhim@hotmail.com](mailto:justwhim@hotmail.com)

07919 106156



## Greenwood homecare

## Do you need care visits at home?

Greenwood Homecare  
provides quality care  
in Peterborough and  
the surrounding areas

✓ FREE ASSESSMENT

 DAY, LIVE-IN OR NIGHT  
CARE AVAILABLE



FOR MORE INFORMATION

Visit: [Greenwoodhomecare.co.uk](http://Greenwoodhomecare.co.uk)

Email: [Peterborough@greenwoodhomecare.co.uk](mailto:Peterborough@greenwoodhomecare.co.uk)

Call: **01733 808531**