

Living Villages

Image taken by John Measures

*Water Newton Thornhaugh
Stibbington Sutton Wansford*

April 2022



polished

NAILS & BEAUTY



Award winning nail and beauty professional, providing luxurious treatments from a relaxed setting

TREATMENTS AVAILABLE

- Manicures & pedicures
- Gel polish
- Footlogix medi-pedi
- Nail rehabilitation
- Bespoke nail art
- Nail extensions

- Eyelash extensions
- Facial waxing
- Tinting
- LVL (lash lift & tint)
- IBX nail strengthening & repairing




phone 07811 057715

email hello@polished-nailsandbeauty.co.uk

website www.polished-nailsandbeauty.co.uk

 Find us on Facebook @polishednailsandbeautyuk

THE HAYCOCK MANOR HOTEL, WANSFORD, PETERBOROUGH, PE8 6JA



Castor Lodge Care Home

Opening Summer 2021



As a new luxury home, Castor Lodge will provide residential and specialist dementia care in a beautiful and homely setting. Our specialist facilities will include large en-suite bedrooms, café, bistro, hair & beauty salon, entertainment suite and spacious landscaped gardens. Contact our friendly team today to discuss the available options.



01733 823 163



Splash Lane, Castor, Peterborough PE5 7BD



www.countrycourtcare.com

Editorial

Dear readers

We are delighted to be bringing you our April edition of Living Villages, with lots of activity around the area. **Nassington Cricket Club** will be celebrating 40 years since their first ever match with three evening events and the opening of their new clubhouse, and an appearance from non other than cricketing legend Jonathan Agnew. Full details are on the centre pages.

As spring is upon us there are some timely tips from **Safe Local Trades** on decluttering your house, and speaking of tidying up, **Wansford and Thornhaugh** have organised a synchronised litter pick at the end of the month to declutter the streets.

The approach of Easter also means a busy schedule for services in our local churches, and all our regularly featured groups have packed diaries for the coming months, plus we look forward to this year's **Wansford Show** in August - I'm sure that more information will feature in future editions.

Finally we are pleased to publish on page 28 information on the **Augean Community Fund**, providing grants for capital improvement to public amenities in the King's Cliffe and Thorhaugh areas close to the respective landfill sites.

Best wishes

Craig

Contents

6	Worship & Benefices
11	Stibbington and Wansford W.I.
15	Parish Council Notices and Minutes
23	Wansford Horticultural & Craft Society
25	Puzzles
30	Contacts

Subscription to Living Villages Magazine

If you know someone who has moved away and would like to receive a copy of Living Villages Magazine, we offer a subscription service.

For an annual subscription of **£20** you'll receive a copy in the post every month.

Please fill in the details below and post along with a cheque made payable to Ascot Graphics to:

Living Villages, Ascot Graphics, 159 New Road, Woodston, Peterborough, Cambs. PE2 9HH

Nameyour name - (if different to subscriber).....

Address

.....

I enclose a cheque for £20 made payable to Ascot Graphics (Signed)

If a BACS payment is preferred, please email craig@ascotgraphics.co.uk

Get your home Spring ready while avoiding a DIY drama!

The Easter break is traditionally a time when DIY-ers and spring cleaners roll up their sleeves and tackle all those jobs around the home. This may include plans to move house, a long-awaited garden makeover, or just a renewed enthusiasm to get your house in order. So, whether you are looking to get your home sale ready or simply embarking on a thorough tidy up, it's time to banish the winter blues with a spring in your step.

If you are selling your home, then you will want it to look it's very best for the viewers and taking action is likely to keep you one step ahead of the competition. Beating the rush means you can start showcasing your property earlier than others, so now is the perfect time to get serious about selling.

Alternatively, if a thorough spring clean has been on your agenda for a while and you keep putting it off (perhaps because you don't know where to start) tackling the clutter one room (or even cupboard) at a time will lead to overall satisfaction.

Remember to take things slowly and don't take on too much at once. If you get overwhelmed then the chances are that you will become fed up, leading to you giving up.

Whether you have five minutes or a whole weekend – here's our super six tips:

1. Take one room at a time – this way you won't get overwhelmed by the task: and be ruthless with your decluttering. Ask yourself, does the item make me happy, does it serve a purpose, when was the last time I used it?
 2. In the kitchen – start with the cupboards and then move on to cutlery drawer (tip: soak tea-stained teaspoons in a mug of water with a few drops of vinegar) and then finish with the microwave, kettle and toaster.
 3. When it comes to the bedroom, the wardrobe is usually the biggest issue. Take everything out and discard anything you haven't worn on the past year or if doesn't fit. Sell good condition clothes and bag up others for charity.
 4. If you are still working from home, think about how you can improve your working area. Re-assess your space and how you can maintain a clutter-free environment. Go through paperwork, refiling or shredding as you go along. A minimal look will help clear your mind for each working day. Have a digital de-clutter too.
 5. In the kids' bedrooms, encourage them to go through their belongings and donate any unwanted items to charity. In return, treat them to some new bed linen and if you want to keep the space as clutter free as possible – some funky storage boxes or containers will give them a reason to keep their room tidy!
 6. If you have taken down numerous paintings, pieces of artwork or photo frames from newly decorated walls, try and get used to living in the space without them for a while, and only put back up what you really want to.
- Less is more – and besides, you want to show off your fab new walls, don't you?

If you don't have the time, skill or confidence to give your home the makeover it deserves then Safe Local Trades can put you in contact with many reputable and reliable professionals to help make your home sparkle this spring.

Whether it's cleaning or decluttering, odd jobs around the home, decorating, bringing new life to your upholstery, installing a new kitchen or bathroom, getting the windows professionally cleaned or your garden landscaped – they have tried, tested and reliable tradespeople for the job; however big or small.

For more information on our members, to view their profiles, photo portfolios and reviews, visit www.safelocaltrades.com

Eileen Le Voi
Safe Local Trades



NEED A RECOMMENDATION?

The **ONLY** Police Checked
recommended register of
local approved traders



FREE and EASY service

safelocaltrades.com

Recommended & Approved



Much more than just a recommendation ...

Serving the PE Postcode community since 2008

Over 70 different trade categories and over 16,500 reviews

Here are some of our members ...

New Garage Door & Repairs



**GARAGE DOOR &
SHUTTER SERVICES**

www.garagedoorandshutterservices.co.uk

Call Dave on

07709 337647

CCTV, Alarms & Security



www.ace4cctv.co.uk

Call Chris on

01733 552048

Driveways & Patios



www.cambridgeshiredriveways.com

Call us on

01733 810063

Building & Carpentry Services



Steve Deprez & Son
Building • Brickwork • Carpentry

Preserving the past, Building the future
stevedeprezbuilders@gmail.com

Call Steve on

07414 292188

Painter & Decorator

PAUL TEE
A Quality Painter & Decorator

www.paulteedecorating.co.uk

Call Paul on

07980 863414

Carpet & Upholstery Cleaning

STAINBUSTERS
CARPET CLEANERS PETERBOROUGH

www.peterborough-carpetcleaners.co.uk

Call Steve on

07818 058490

Electrician



www.jwelectician.co.uk

Call Jamie on

01733 612339

Plumber (Heating & Gas)



www.willowservices.co.uk

Call James on

01733 595051

Garden Design & Landscaping



www.sbdpaving.co.uk

Call Sam on

07742 246955

To see our full list of members and read all reviews just go to ...



www.safelocaltrades.com



0800 014 1832



The safest way to source local traders



Tear out page and keep



WORSHIP APRIL 2022

Every Sunday 5.00 p.m. "Zoom" At Home Service. Log-in details from Rev. Jane jdtailby@aol.com

St. Leonard's, Apethorpe		
3rd	11.00 a.m.	Holy Communion
15 th	2.00 p.m.	Good Friday Devotions
17 th	11.00 a.m.	Easter Holy Communion

St. Mary's, Wansford		
Every Wednesday 10.00 a.m. Morning Prayer		
10 th	9.30 a.m.	Holy Communion for Palm Sunday
17 th	11.00 a.m.	Easter Holy Communion
24 th	9.30 a.m.	Holy Communion followed by APCM

St. Mary's and All Saints, Nassington		
Every Thursday 9.30 a.m. Holy Communion BCP		
5 th	8.15 a.m.	Holy Communion BCP
	9.30 a.m.	All Age Communion
10 th	9.30 a.m.	Holy Communion
14 th	7.00 p.m.	Maundy Thursday Communion
15 th	12 noon	Good Friday Devotions
17 th	9.30 a.m.	Easter Holy Communion
24 th	9.30 a.m.	Family Service with Crafts

St. Mary's. Woodnewton		
3 rd	9.30 a.m.	Holy Communion
10 th	9.30 a.m.	Holy Communion for Palm Sunday
15 th	2.00 p.m.	Good Friday Devotions
17 th	9.30 a.m.	Easter Holy Communion
24 th	8.30 a.m.	Holy Communion BCP

St. Andrew's, Thornhaugh		
3rd	9.30 a.m.	Holy Communion
15 th	1.00 p.m.	Good Friday Devotions
17 th	9.30 a.m.	Easter Holy Communion

St. Mary Magdalene's, Yarwell		
10 th	11.00 a.m.	Holy Communion
11 th , 12 th , 13 th	6.00 p.m.	Compline for Holy Week
15 th	12 noon	Good Friday Devotions
17 th	11.00 a.m.	Easter Holy Communion
24 th	11.00 a.m.	Holy Communion

PIANO LESSONS IN PETERBOROUGH

Ann Burden ALCM PGCert BSC(Hons)

Please contact annburden684@msn.com or ring 07702363337

QUALIFIED EXPERIENCED TEACHER

No experience is necessary. I can teach you to play for pleasure or towards an exam; I currently work for the London College of Music. Lessons are tailored to your requirements.

If you would like to take up a new hobby or rekindle an old one I would love to hear from you. I am happy to take children from the age of three upwards and there is no age ceiling.

I teach a wide range of instruments primarily piano, keyboard, guitar, violin, clarinet and saxophone. Other instruments are also available so please feel free to contact me with requests. I also teach music theory.

****Online classes also available****



REFLECTIONS

As I write this in mid-March I am enjoying the many signs of spring around me. The snowdrops (one of my favourites!) are going over and the daffodils and crocuses are taking their place. The blackthorn is blossoming and forming frothy white displays in hedgerows that are just beginning to turn green. It is a wonderful time of hope and expectation as we move out of winter.

However, of course I am also writing surrounded by the daily news from Ukraine; news of bombed cities, terrified and hungry citizens and many, many refugees fleeing their war-torn homeland. I have no idea what the news will be of when you read this in the April magazine; my deep, deep prayer is that there will at least be a ceasefire and negotiations, but there is also the shadow of continued fighting and so much more suffering and even an escalation of the conflict.

In the first days of the conflict I joined an incredibly moving online service led by the Bishop of the Anglican Diocese in Europe. The service included a reflection from an Anglican chaplain in Moscow and even contributions from the church warden of the Anglican Church in Kyiv. It was so poignant to see her speaking from her apartment in the city knowing that later that night she may be sheltering in a basement or tube station. To hear her pray the Lord's Prayer in Ukrainian as we all prayed the same words in our language was so powerful, reminding me of what we have in common in faith and in our very humanity.

I think we all have particular images from our newspapers or TV screens that encapsulate something of this dreadful situation. For me, these have guided my prayers and the reflections I have shared in church and I am sure that for all of us these pictures have had an impact on us, leading to action and thought.

It seems even more telling that all this is taking place in the Christian season of Lent which looks to Jesus' death on the Cross to draw all people into God's love and the overcoming even of death in the glory of the Resurrection. Easter is about hope from despair, about confidence in the providence of God from the depths of lament. For those of us of faith, prayers for peace, for an awareness of truth, for the overcoming of evil and the defeat of the corruption of truth are deep in our hearts. For so many of any faith or none is the desire to do something to help those in need and it has been a real sign of hope in the outpouring of love and care for those who have experienced such suffering in this conflict. Easter is about hope, about the belief in God's providence. It is sometimes difficult to understand when we cry out, "O God, how can this happen – do something!" One of my Lent books, rather wonderfully, has been about hope and I have found some of the words particularly helpful. The author writes: "Trust in God's providence is beautifully expressed in the words of Jesus: Are not two sparrows sold for a penny? Yet not one of them will fall to the ground apart from your Father. (Matthew 10. 29)" She then goes on to quote another Christian writer commenting on this verse: "not everything that happens to us is the will of God, yet in the last resort nothing happens without his will, i.e. through every event, however untoward, there is always a way through to God." These words are even more shot through with an incredible trust in the providence of God in the midst of great struggle when we realise that the writer was the German pastor Dietrich Bonhoeffer who was writing from prison after being imprisoned and eventually executed because of his open opposition to Nazism. "Providence" the author concludes, "is God's faithful love watching over all that happens to us and to our world." (Hope and the Nearness of God. Teresa White. 2022)

All are welcome to join our Holy Week and Easter services, as we journey from the Cross to the Garden of Resurrection. In our prayers and reflections we can offer to God our sadnesses and distress and seek the hope of the Easter message. May we, in whatever challenges we face as individuals and in our world be encouraged by words of hope and signs of hope, wherever we encounter them, and may we part of bringing hope to others.

With every blessing,
Rev. Jane

CASTOR BENEFICE

Castor Benefice Services

We are still maintaining the following service pattern every Sunday in each of our **Parish churches** until further notice.

Marholm 9.00am - Holy Communion (Morning Prayer on 4th Sunday)

Castor 8.00am Holy Communion (said service) 10.15am - Sung Eucharist

Sutton 9.00am on 4th Sunday of the month - Holy Communion

Every **Wednesday** morning at **10am** there is a service of Holy Communion at **Castor**.

We still continue to celebrate **Evensong via Zoom at 6pm every Sunday**, if you wish to join us please email rh@raymondhemingrey.co.uk for the Zoom link and access code.

Please see separate poster opposite for all relevant details regarding Holy Week and Easter Services.

David Ridgeway

ST. JOHN THE BAPTIST

STIBBINGTON

HOLY COMMUNION

EASTER DAY 17 APRIL AT 6.00 PM



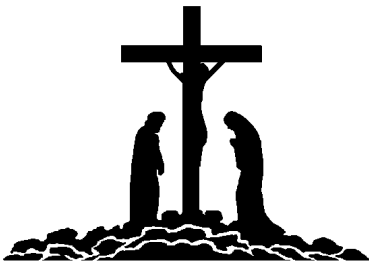
Refreshments will be served after the service, do come and join us, you will be assured of a very warm welcome.

Castor Benefice

Holy Week and Easter Service 2022

The following services are planned

Monday in Holy Week 11 th April	7.45pm	Sung Compline at St Kyneburgha's, Castor
Tuesday in Holy Week 12 th April	7.45pm	Night Prayer at St Kyneburgha's, Castor
Wednesday in Holy Week 13 th April	7.45pm	Night Prayer at St Kyneburgha's, Castor
Maundy Thursday 14 th April	7.45pm	Commemoration of the Last Supper at St Kyneburgha's, Castor
Good Friday 15 th April	10.30am	Good Friday Children's Activities at St Kyneburgha's, Castor
	2.00pm	Liturgy of the Cross and Passion at St Kyneburgha's, Castor
Easter Eve 16 th April	7.45pm	Easter Vigil at St Kyneburgha's, Castor
Easter Day 17 th April	8.00am	Holy Communion at St Kyneburgha's, Castor
	9.00am	Holy Communion at St Mary's, Marholm
	9.00am	Holy Communion at Michael's, Sutton
	10.15am	Holy Communion at St Kyneburgha's, Castor
	6.00pm	Holy Communion at St John the Baptist's, Stibbington
	6.00pm	Evensong via Zoom
Please e-mail rh@raymondhemingray.co.uk to receive the Zoom link and access code		



The Friends of St Mary's and St Andrew's

Dates for your diaries- our 2nd Lent Lunch will take place in St Mary's church at 12 midday on Wednesday 6th April, with Morning Prayer at 11.30.

After Easter, Coffee Stop will restart on Wednesday 27th April from 10.30- 12 in St Mary's.

Please come and help us support our chosen charities.

If anyone is interested in joining us, new members are always welcome!

Caroline

BARKLEYS GARDEN SERVICES

Grass cutting, weeding,
hedge trimming
Lady gardener
available

Bev & Peter
Ailsworth
(01733) 380480
07593721144
beverleybarkley1@gmail.com



GRIFFIN

**Solid Fuel Merchant
Supplier of Pre Packs**

Coal Bunkers Charcoal Compost
Flo Gas Logs & Sticks Salt

Coal Yard
Station Road
Nassington
01780 782540

Office
12 Church Hill
Castor
01733 380470



Dry carpet cleaning and upholstery
cleaning services in Peterborough and
the surrounding areas.

Whether you have an individual chair or
carpet in a domestic property, or are
interested in contract carpet cleaning in
your business, you can benefit from our
35 years experience.

Telephone: **01832 280429**

Mobile: **07951 124374**

Email: info@bcnmulticlean.co.uk

*Experienced Private Tutor and FE College Teacher with
DBS enhanced certificate offers*

MATHEMATICS TUITION

(At home or online)

for
GCSE and A level

contact
John Barratt Dip.Math BSc

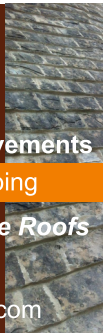
07939 263091
jbmaths@gmail.com



F.Had Roofing & Home Improvements
roofing. building. landscaping

Specialist in Collyweston Slate Roofs

07712 607821
email: frankhad0892@gmail.com



STIBBINGTON & WANSFORD WI

Today's women working for tomorrow's world

theWI
INSPIRING WOMEN



For our February meeting, we welcomed back local historian Bethany Turner.

Beth's talk this time had a very much more personal connection. While carrying out some research into her family tree, Beth found out that her great great grandmother suffered with Epilepsy and had been a long term resident at St Ebbas Hospital, part of Horton Hospital complex also known as the Epsom Cluster.

With a wish to find out more, Beth embarked on a quest to find some answers, which led her to becoming a trustee for Friends of Horton Cemetery.

Beth found out that The Epsom Cluster was a was set up by London County council, the hospitals were opened in the early 1900s. They were ground-breaking in the treatment of mental health for their day. Health care was based on new thinking in which fresh air, exercise along with the very start of occupational therapy treatments were at the centre of the ethos for these hospitals. All five hospitals continued to embrace all the advances in mental health that have been made during their working life until they were closed in the second part of the 20th century. The only gaps were during the two world wars, where each were commandeered becoming military hospitals. As the care in community policy took off, many large hospital complexes including the Epsom Cluster were sold off to redevelopers in 1993.

None of the hospitals remain, however the cemetery where residents of the hospitals as well as soldiers from the two world wars are interned. The Friends is a community project, which aims to immortalise those buried at Horton Cemetery. They are campaigning to save the cemetery for redevelopment with the aim to create a place of rest, and reflection. In addition, the Friends are researching and writing the stories of the residents. This aspect, Beth found very helpful as like many, she knew very little about her family relative, and her life at St Ebbas hospital.



Beth with her grandmother, Christine Turner

This was a very thought-provoking talk, which led to a discussion, with members sharing their own family experiences on this sensitive subject.

Now that we are meeting in St Mary's Church visitors are most welcome to our monthly meetings to hear our visiting speakers. Please see below for our upcoming events

Future events:

Tuesday 12th April, 7pm W.I. meeting St Mary's Church – Sue Jakeman, Bees and Beekeeping.

Tuesday 5th April, 2-4pm Coffee & Craft club, at St Mary's Church.

Tuesday 19th April, 2-4pm Coffee & Craft club, at St Mary's Church.

Thursday 26th May, 7.30pm Book Club meeting, at The Cross Keys Wansford

Both the Coffee & Craft club, and Book Club are open, not just for WI members only, and we look forward to others joining us.

Rhona Punter
01780 592514

PAWS AND CLAWS



Boarding Cattery

"Cats have a 'tail' to tell when they've 'paws'd' awhile at Wansford's 5 Star Parr Palace"

Tel 01780 782174

e-mail

pawsandclaws@hotmail.com

Working with Peterborough Cat Rescue to rehome cats and kittens seeking loving homes and laps on which to purr

Peterborough City Council & Rutland County Council
Licence Number: 078015

effeljay

Bespoke framing
for all sorts of
things.

Contact:

FELICITY THISTLETHWAITE

m: 07943 127979

t: 01780 470275

e: ftistlethwaite@rocketmail.com

www.efflejay.co.uk

Member of the Fine Art Trade Guild



THE SPECIALISTS IN PODIATRIC MEDICINE



For Orthotics that
really do their job



YOUR SMART START TO 2022



Using connected insoles, PODOSmart collects over 10 biomechanical parameters allowing a full accurate and objective analysis of your gait - resulting in orthotics which are more comfortable and effective

Take advantage of our limited introductory offer of a Biomechanical Assessment for just £99

From 31 Mar 22, price reverts to £149.

Sue Arnold BSc(Hons) MCPod & Associates

19 Elton Road, Wansford PE8 6JD

Tel: 01780 783982

wansfordinstep@gmail.com

Open Monday - Friday





Your trusted advisers

We provide individuals and businesses with a full range of accounting, audit, corporate and personal tax planning services.

- Audit and Accountancy
- Business Acquisitions and Disposals
- Business Plans and Projections
- Corporate and Personal Taxation
- Grant Funding
- MT Cloud Accounting
- Payroll, Bookkeeping and VAT
- Tax Planning and Mitigation

For more information,
please contact us:

 **01733 560160**
moorethompson.co.uk

Peterborough | Spalding | Wisbech | Market Deeping



Moore Thompson is registered to carry on audit work in the UK
by the Institute of Chartered Accountants in England and Wales.



OVER 50 YEARS EXPERIENCE

Car buying as it should be; simplistic, with no admin fees, no pressure and a wealth of knowledge to help you find your dream car.

Great part exchange prices given

Finance from as low as 6.9%

www.heartysofpeterborough.co.uk

01733 560605

sales@heartysofpeterborough.co.uk



HEARTYS
of Peterborough



The March meeting of the Parish Council was held on the 14th March 2022 in the Community Hall and was attended by five Parish Councillors, two members of the public and the Clerk.

A full account of the meeting can be found in the Minutes of the Meeting on the village website www.wansfordvillage.com

I report that Cllr Thorley has resigned her position on the Council due to poor health. We hope Vivien has a speedy recovery and thank her for service to the Council and the community.

This year sees **Wansford Parish Council elections** to be held on Thursday 5th May 2022. Residents who feel they could make a difference are encouraged to seek nomination. Details can be obtained from our Clerk, Mrs. Marie Lewis, who can be contacted at clerk@wansford-pc.gov.uk

Further discussion was had concerning the **St Mary's Church** replacement floodlighting and the Parish Council remains supportive. I would hope this magnificent Grade 1 Listed building is seen as a centrepiece of the village and that it's illumination during hours of darkness further enhances this.

Residents are hopefully aware there is a **Defibrillator** situated in the old Phone Box on Old North Rd, thankfully not used to date. However, it is checked, maintained and ready to go. With this in mind, **free** training sessions on CPR and use of the Defibrillator are to take place on June 11th and September 10th in the **Community Hall** and anyone interested is invited to contact the training provider www.nassingtonheartsafecommunity.org to book your place.

Residents may have noticed three large road signs have been removed from the Green, from near the Church and from the entrance to Nene Close. In their place are two new finger post road signs which hopefully residents will feel are more in keeping with a village setting.

Regrettably, the sign makers made an error in spelling King's Cliffe, which was noticed immediately after the workmen erected the signs and this is being rectified with some urgency.

There has been a need identified for a litter bin to be sited on the side of Peterborough Rd near the Nene Way footpath (A1 end). Peterborough City Council has agreed to relocate the present litter bin from the Old North Rd/ Peterborough Rd crossroads and Wansford Parish Council is to replace this with a new wooden one.

The **Vehicle Activated Speed signs** are presently situated on Old Leicester Rd and Bridge End and will no doubt have recorded the massive increase in traffic crossing the bridge during the weekend of 12th/13th March. The Council will be looking to discuss the inadequate diversions in place when A1 roadworks and closures are undertaken by National Highways.

The **Good Neighbours - Rural Peterborough** scheme is underway in Wansford and some leaflet information will have appeared through your letterboxes. There is further information on the village website.

And finally, although in Sutton Parish but very close to Wansford, there are moves afoot to relocate the old **Sutton Station building** before the planned A47 Upgrade drives a path through it. There is some controversy over the consultation and due process that has been undertaken by Arcadis/National Highways. Further information can be obtained from Sutton Parish Council.

The next meeting of Wansford Parish Council is 11th April 2022 at 7.30pm in the Community Hall and you are most welcome to attend.

Cllr John Stannage

Nassington Cricket Club

40 year celebration including T20 matches and entertainment with Jonathan Agnew

In May this year, **Nassington Cricket Club** will celebrate 40 years since the first ever match was played on their current ground. This coincides with the opening of the newly refurbished clubhouse.

To celebrate this occasion 3 evenings of events are planned, to which all are invited. The evenings are free to attend, and there will be the opportunity to purchase food & drinks as well as a raffle to raise money for the club. Prizes include tickets to Lords in August.

Wednesday 25th May from 6pm:

Special guest Jonathan Agnew will formally open the new clubhouse, followed by T20 1st XI Nassington v Newborough.

The evening will also include a raffle, BBQ, bar, cake stall and sweets stall for all to enjoy.

Thursday 26th May from 6pm:

U19s T20 Nassington v Newborough cricket match with BBQ and bar.

Friday 27th May from 6pm:

Juniors' match and family fun night, with BBQ, bar, sweets stall and games especially for younger members to enjoy.

History of the club

In 1982 Nassington & Apethorpe Cricket Club started playing at Apethorpe Hall on the front lawn. The hall was sold, and so the team moved to the field in Nassington – then just a meadow with no pavilion or facilities.



Original scout hut wooden walls

The first clubhouse

A disused wooden scout hut (shown above right) was obtained and erected on site. Over the years improvements were made starting with replacing wooden walls with breeze blocks, followed by small side extensions and a separate score box.

Local involvement

A team of dedicated volunteers work at the club maintaining the ground, clubhouse and managing the bar. The goodwill and community spirit has ensured the club has continued to grow and offer a friendly and fun atmosphere.

Passion for cricket

Despite the deterioration of the clubhouse over the last few decades, cricket has gone from strength to strength. The club has always prided itself on family values, inclusion and the development of young players. Add to this the local support from parents and family members, the club has created an enviable atmosphere from the boundaries!



2021 Clubhouse prior to new renovation

What does the current club offer?

Nassington CC welcomes players of all ages; youngsters can join with boys' and girls' teams ranging from Under 9 to U15. Senior teams play within both the Hunts and Rutland Leagues and a Women's team last year played in a Leicestershire League. The club has been a pioneer for the development of female cricket with several members being selected for District and County teams. New members are always welcome.



2022 current renovation of the clubhouse, hoping to be finished by the May 40th Birthday

Ongoing funds are required to help meet the costs of this renovation. The clubhouse will not only host cricket matches, it will also be available to hire for parties and gatherings making it such an important facility for Nassington and surrounding villages.

If you are kindly able to donate, please contact [nassingtoncricket@gmail](mailto:nassingtoncricket@gmail.com)

THORNHAUGH PARISH COUNCIL

A meeting of Thornhaugh Parish Council took place on 17th January 2022 in St Andrew's Church. Details were printed in March's Living Villages magazine and are available online.

Date of Next Meeting - The next meeting of Thornhaugh Parish Council will take place at 7.00 pm on 21st March 2022 in St Andrew's Church.

Thornhaugh Parish Council Annual Parish Meeting followed by the Annual General Meeting will take place at 7.00 pm in St Andrew's Church on 16th May 2022.

SIBSON-CUM-STIBBINGTON PARISH COUNCIL

Sibson-cum-Stibbington Parish Council met at The Christie Hall on Thursday 17th March 2022. **THE MEETING WAS HELD UNDER STRICT COVID 19 CONDITIONS.**

6 Councillors were in attendance and 5 members of the public were also present. Apologies received from County Cllr S Bywater and Parish Cllr E Engel. Cllr Beuttell welcomed everyone to the meeting.

LHI and NVR proposal for alteration – Cllr Beuttell advised new plan produced – no parking spaces allocated for residents. Cllr Beuttell will check with Highways. Comments from public -Will signs just be in multi-lingual. Can a restriction be put on 7.5 ton access road and HGV's not allowed, Highways to be consulted and asked If we have issues will someone come out to enforce? More traffic cones were requested for Old Great North Road.

Planning Applications (New):

21/02857/HHFUL and 21/02858/LBC – Replacement of Roof Covering – 4 Elton Road, Wansford PE8 6JD – response of no objection will be sent to HDC planning.

22/00244/LBC – Enforcement Notice for 18 Elton Road 0800077ENLBCA – response No Objections raised.

22/00484/HHFUL and 22/00485/CAC – Single Storey Front Extension – 51 Church Lane, Stibbington – response No Objections raised.

Newlands Industrial Proposal: Cllr Beuttell reported Newlands Application received at District Council – Industrial Site (Alwalton all way down to Extra Services) – Ref No. 22/00441/FUL. Residents requested to examine the application and comment accordingly.

Queens Platinum Jubilee – The PC will be planting an Oak tree and replacing a Bench in the village to celebrate this. It is proposed to have an Afternoon Champagne Tea party beginning at 4PM on Saturday 4th June 2022, along Elton Road. This is hoped will replicate the successful VE day celebrations of 2020. The Road through the village will not be closed. More details to be published soon.

Date of next meeting – Election takes place on Thursday 5th May so next meetings scheduled for Thursday 12th May 2022 in the Christie Hall commencing at 7 p.m. Annual Parish Meeting, Annual Parish Council Meeting followed by normal Parish Council Meeting.

A47 WANSFORD TO SUTTON DUALLING UPDATE - MARCH 2022

The Planning Inspector conducted 8 hours of online hearings over the 15th, 16th and 17th March covering the areas of historical interest, environmental issues, risk during construction, traffic modelling, compulsory purchase and the wording of the Development Consent Order documents. The Inspector has been brilliant at running these sessions which were attended by National Highways, Historic England, the Environment Agency, Peterborough City Council, Sutton Parish Council, Wansford Parish Council and the Peterborough Cycle Forum. The Inspector asked very detailed questions of all concerned and has sent National Highways (NH) away with quite a number of tasks, mostly to respond to issues that the Parish Councils have raised over the last few years.

On the Wansford Western Roundabout he has asked NH to substantiate their claim that this was outside the scheme as there is no written statement to substantiate this. He has also queried their traffic modelling as NH's own figures are self-contradicting.

On the issue of the route in the area of the Scheduled Monument, the Inspector carefully reviewed the features of the monument and the downsides of the current preferred route including risk levels, reduction in non-motorised transport links, damage to the Nene Valley ecology, damage to veteran trees and flooding issues. He also questioned all parties at length about the old Wansford station which will be demolished under the scheme and what the options are for its reconstruction.

The issues about access to Upton village were discussed at length along with the future of cycle, pedestrian and horse riding access along the A47 corridor and north-south across the A47.

In the DCO document hearing National Highways tried to avoid further consultation with the Parish Councils as they considered that this would cause further delays. Needless to say, the Parish Councils are opposing this.

If you wish to listen to the whole proceedings, there are complete recordings available on the Planning Inspectorate web site at

<https://infrastructure.planninginspectorate.gov.uk/projects/eastern/a47-wansford-to-sutton/?ipcsection=docs> .

Now there follows a series of deadlines for the submission of further evidence and then another round of online examinations in May 2022. The Inspector will finally give his views at the end of July 2022. We do not know what the outcomes will be but I am confident that the issues will have had a fair and thorough examination.

Richard Clarke
Wansford Parish Council

WANSFORD COMMUNITY HALL

Peterborough Road, Wansford

This hall accommodates parties of up to 36 people seated. Ideal for Meetings, Workshops, Aerobics etc

GREAT VALUE AT ONLY £4 per hour
FOR BOOKINGS TELEPHONE
John Stannage 07879 485330

Capitol Lettours



Your local property agent

**With over 30 years of
experience**

Relocation, Lettings and Sales

**Please call our office for a
competitive quote**

Peterborough - 01733 553366

(enquiries@capitollettours.com)

www.capitollettours.com

SAVE THE DATE: Wansford Show Saturday 27th August 2022

Our Show Committee are already planning another great day for all the family. 1,000 visitors attended in 2021 and we hope to exceed the marvellous feedback received. Watch this space for more details of the live music, Tug of War, children's entertainers, classic vehicles, craft & plant stalls, (much more) food & drink and how to enter your exhibits into the Show.



The
**WANSFORD
SHOW**

Celebrating the best of our village life

Bradshaws Field (Christie Hall), Elton Road, Wansford PE8 6JS

SATURDAY 27th AUGUST
FROM 12-5.30

Entertainment for All Ages, Horticulture & Crafts Marquee, Wide selections of Craft Stalls, Food and drink, Tug of War, Beer tent/Gin Bar, Children's games, Live Music, Classic Cars & Bikes and much more,

Raising money for village organisations and Sue Ryder (Thorpe Hall Hospice).

If you want to find out more information please contact garypunter@aol.com

Wansford and Thornhaugh Litter Pickers

All are welcome to join us once again on Sunday 24th April for litter picking in and around **Wansford**.

Meeting at 10.30am at 7 Old North Road PE86LB, equipment provided, pick for half an hour or all morning – up to you. Please wear suitable footwear and high viz if you have it!

Keep an eye on the Wansford community Facebook page for this event and other upcoming dates.

Thornhaugh litter pick will synchronise with Wansford on Sunday 24th April.

Meet at Thornhaugh Village Green 10.30am

See Thornhaugh Community Facebook page for more info nearer the day.

Thornhaugh knit and natter / craft and coffee

I am gauging interest in the above. Likely to be a Wednesday morning . Please email me if your are interested in this community get together. Any age or gender welcomed.

Nikki Higgins

nikki@4stonecottage.co.uk



AP
KINGS CLIFFE

OPEN GYM
EXERCISE CLASSES
SPORTS PERFORMANCE
PERSONAL TRAINING
GP REFERRALS
PRE & POST NATAL

Membership includes unlimited classes
Functional Fitness • Legs, Bums & Tums
Full Body HIIT • Box Fit • Bootcamp • Pilates

JOIN ONLINE NOW!
www.activeperformancekingscliffe.com
STATION RD, KING'S CLIFFE, PETERBOROUGH PE8 6YH • t: 07742 498999
e: info@activeperformancekingscliffe.com [f](https://www.facebook.com/activeperformancekc) [i](https://www.instagram.com/activeperformancekc) [y](https://www.youtube.com/activeperformancekc) activeperformancekc

FOOTPATHS
If walking the local footpaths is something you like to do would you be interested in joining like minded people to help monitor our local rights of way? If interested, please drop me a line linfree52@icloud.com or 07876341514 and I can explain in more detail. Thanks in advance

THE CHRISTIE HALL

Elton Road, Wansford
(registered charity no 1033998)

A well-equipped hall
with large kitchen and parking.
**Available for parties,
receptions,
meetings,
activity groups
and most types of private functions**



For more information
and details on how to book
visit our website

www.christiehall.co.uk

**KEEPING OLDER AND
VULNERABLE PEOPLE
SAFE IN THEIR OWN HOME**

THE BOBBY



Supporting victims
in

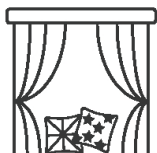
Cambridgeshire & Peterborough

**Pro Active Security visits are available
including all devices & fitting
for a small donation**

Email: info@thebobbyscheme.org

Web: www.thebobbyscheme.org

01480 413311



Georgina's

Curtains & Keepsakes

*Beautiful curtains, blinds and soft furnishings
designed and created to compliment your
home.*

*For a free home consultation
and quote call 07957686595*

www.georginascurlainsandkeepsakes.com



PETER RIDDINGTON LANDSCAPING

We supply and install Patios & Pathways, Decking, Stone Walls and Fencing,
We plant Trees, Shrubs Hedges and Flowers, and offer a complete Garden
Maintenance and Improvement Service. Garden design service provided
Contact Peter Riddington today for a free quotation

4 LOCKS GREEN, YARWELL, PETERBOROUGH PE8 6PY
Telephone: 01780 783004 Mobile: 07860 962068
Email: peter@peterriddington.co.uk



Our Events are up and running

We step into Spring with the launch of a new initiative '**Seed Swap**' from April 1st, hosted with great thanks by Sue Arnold at Wedgwood Cottage, Elton Road (next to CrossKeys). Please come along to swap/collect/donate your seeds/seedlings. We hope to rehome many plants and raise monies for Sue Ryder.

Auricula Theatres & Plant Sales 28th April Christie Hall 7.30pm

For our next talk, we are fortunate to bring **James Smallwood** to Wansford (face to face) to talk about his passion for Auriculas plus a few plant sales. Auriculas are primula plants with delicate flowers and have been shown in Auricula theatres since 1700's, to show off the grower's skills in breeding new varieties.



- **Do YOU want a great & green way to reduce gardening costs?**
- **Need a few seeds not a whole pack?**
- **Want an outlet for your surplus seeds/seedlings?**

We have the solution:

Join our SeedSwap Scheme!

- Keep your seeds in the original packet, if possible.
- Ensure they are labelled with seed name, growing tips, height and spread etc.
- Bring your surplus seeds/seedlings, put them in/by the SeedSwap Drawers located at **Wedgwood Cottage, Elton Road, Wansford.**
- Help yourself to any seeds/seedlings that you need.
- Nothing to Swap? Then just leave a donation for 

Seeds will be checked & repacked into small quantities for swapping on.
Enquiries 07740 886885

James will tell us where to buy Auriculas, the best way to grow, look after, propagate and display these lovely plants. We will get the chance to see these plants close-up!

Free Entry for Society members plus non-members very welcome (£1 entry)

Happy Spring Gardening to all.
Gary (garypunter@aol.com)

Gary Punter



James Smallwood with Alan Titchmarsh at Chelsea

Woodland Timber Products

Fencing, Play Houses, Gates
Pet Housing, Sheds



01780

783983

Unit 4, Leedsgate Farm Business Park.
Kings Cliffe Road. Wansford PE8 6NX.
07748 787360

woodlandtimber.products@yahoo.com




Local Housekeeper / Cleaning Lady

Long term customer references ✓
Exceptionally high standards ✓
DBS registered ✓
Ofsted registered Nanny / Housekeeper ✓

Telephone: 07741 468392

MOBILE HAIRDRESSING

Ladies & gents hairdresser with over 30 years experience.

If you are housebound, have reduced mobility, no transport or simply prefer the convenience of having your hair done at home, I have daytime appointments available. Fully insured. Competitive prices.

Please call Tracey on 01780 782467



5 Cheeky Monkeys Carpentry

Outside shelters
Animal enclosures
Car ports
Fences/gates
Funky up-cycled furniture
Post boxes
Planters
Toy boxes
Garden storage
And much, much more.
All made to order



Over 20 years experience in carpentry
We cover home improvements and all aspects of outdoor furniture

07366 031890

fivecheekymonkeys2021@gmail.com



THE CARRIAGE
Exclusive Fitness Club

OPEN NOW

Join our experts for the best personal training sessions and group workouts, in a stunning & unique environment.

Wittering Grange, Wansford, Peterborough, PE8 8NR
07508 878121 / 07841 733578
www.thecarriagefitness.co.uk



Registered
Business



Oil boiler servicing and repairs, heating controls, hot water service and repairs.

Your local heating expert for over 15 years.

Jo Childs,
8 Black Swan Spinney,
Wansford.

Mob : 07729036942



Time For a Break

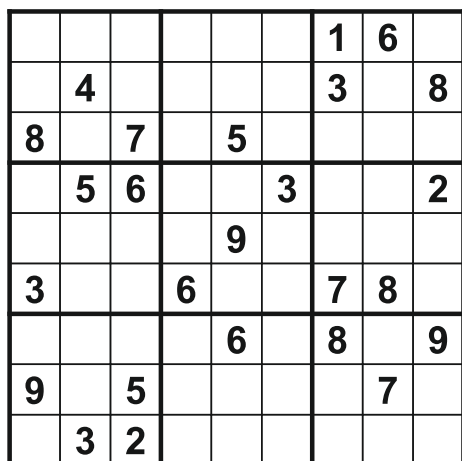
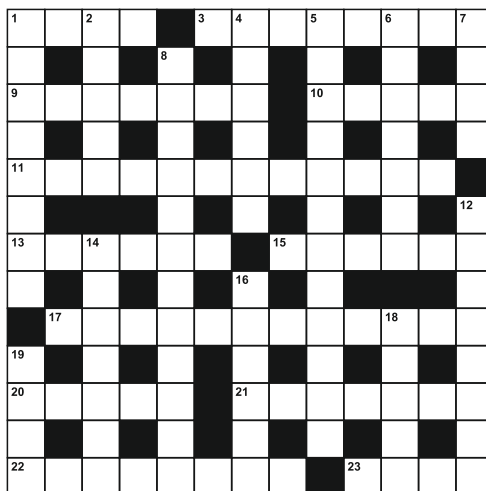
Quick Crossword

Across

- 1 - Ready to eat (of fruit) (4)
3 - Indirect reference (8)
9 - Narrow strip of land (7)
10 - Capital of Ghana (5)
11 - Recovering from illness (of a person) (12)
13 - Utterly senseless (6)
15 - Support (6)
17 - Long essay (12)
20 - Small antelope (5)
21 - Firmly (7)
22 - Bouquets (8)
23 - Chopped (4)

Down

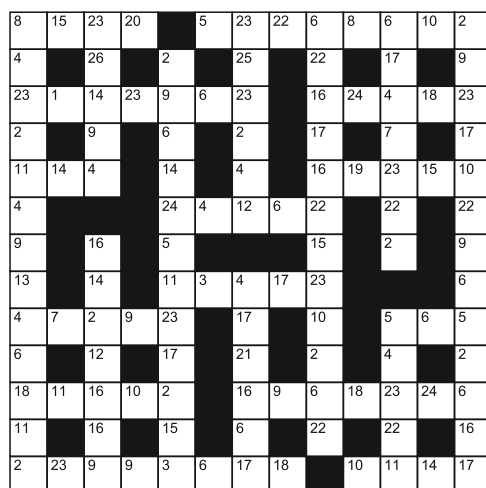
- 1 - Water-resistant jacket (8)
2 - Feign (3,2)
4 - Person to whom a lease is granted (6)
5 - Intolerable (12)
6 - Fragrant gum or spice (7)
7 - Tidy (4)
8 - Awkward (12)
12 - Fully aware (4-4)
14 - Alcoholic drinks (7)
16 - Very reliable (6)
18 - Alphabetical list in a book (5)
19 - Device sounding a warning (4)



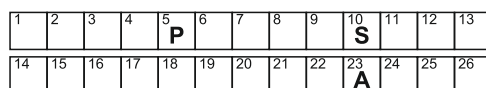
Sudoku

Solutions on Page 29

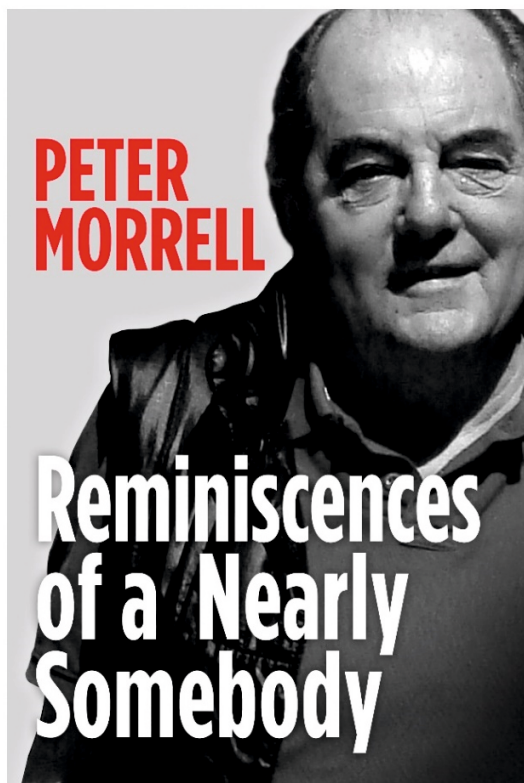
Codeword



A B C D E F G H I J K L M N O P Q R S T U V W X Y Z



LOCAL AUTHOR'S LATEST BOOK!



Five essays by Nassington resident, Peter Morrell, one-time barrister and judge and currently local clergyman, recounting a walk he took alone in West Germany aged 18, his campaign as the Conservative candidate in a strong Labour seat in the general election of February 1974, his career as a writer, his translation from barrister to judge and from layman to Anglican priest.

Publish date 21 April 2022 and then available from Oundle Bookshop, Nassington Stores, Waterstones, other bookshops and Amazon.

Book Launch, Oundle Bookshop, 5-8pm, 21 April 2022 – canapés and wine - email to petermorrell@sulehay.co.uk by 14 April if you intend to be there.



THE ARTS SOCIETY PETERBOROUGH

The Arts Society (a leading arts education organisation) brings people together through a shared curiosity for the arts. Each year The Arts Society Peterborough (TASP) holds nine illustrated talks on many interesting, informative and entertaining topics. The talks are held at The Fleet in Fletton, Peterborough on the second Thursday of each month (except June, July and August) starting at 10.45am. They are a good way to meet likeminded people, chat with friends over a cup of coffee before the talk commences, and non-members are always welcome to join us.

In addition to the live talks, annual members also receive additional benefits. If you wish to find out more about our Society or about becoming a member, please visit our website for more information: www.the-arts-society-peterborough.org.uk. This year's varied programme of talks includes The Koh-i-noor Diamond; Why Morocco got painted Blue; 20th Century Sculpture; The Fascination of Jewellery, and Is Christmas in Good Taste? More details about each of these talks can be found on our website. Our next three talks are described below:

14TH APRIL 2022

Origins: Cave Paintings to the Greeks by Giles Ramsay

Over 30,000 years ago mankind began to make sense of his place in the world through art and myth. In this lecture Giles explores how stories told in the primitive world can relate to us today.

12TH MAY 2022

Koh-i-noor - The most famous Diamond in the World by Georgina Bexon

This lecture informs about the discovery of 'The Mountain of Light' 'thousands of years ago in an Indian river bed to its resting place in The Tower of London. The story includes everything from desire, jealousy and political chicanery described by the artists that committed events and emotions of their time.



HOW WE ARE DIFFERENT?

	Confirm your budget	Explain the house buying process	Find the perfect house	Save you as much money as possible	Search the whole market for the right mortgage	Deal with solicitors paperwork	Take care of all your protection needs	Be there every step of the way
US								
OTHERS								

EARN
£50

REFER A FRIEND:

Every time you refer friends or family to see us, benefit from our £50 'Refer a Friend' scheme when they complete!

*Terms & conditions apply.

Our team are happy to help



KATE



LAURA



HAYLEY

THERE FOR YOU EVERY STEP OF THE WAY

01205 631330 kate@homemortgagesolutions.uk www.homemortgagesolutions.uk

*Your home may be repossessed if you do not keep up repayments on your mortgage

Augean Community Fund

May 2022

The **Augean Community Fund** uses monies provided by Augean under the Landfill Communities Fund.

The company's donations relate to its two landfill operations located at Thornhaugh near Peterborough, and King's Cliffe in Northamptonshire. Recommendations on all grants from the Fund are made by King's Cliffe Environmental Association (KCEA) and Thornhaugh Environmental Association (TEA).

These two committees comprise volunteers from the villages of King's Cliffe, Thornhaugh and nearby, who are best able to represent local community priorities.

Application Closing Dates

There are usually two funding rounds each year, the next two closing dates are:

Wednesday 18 May 2022

decisions by Early August 2022

Wednesday 16 November 2022

decisions by End January 2023



Who can apply?

Groups with projects that are located within 10 miles of the King's Cliffe landfill site or the Thornhaugh landfill site may apply for grants. Priority will be given to applications received for projects located within 5 miles of Augean's Thornhaugh and King's Cliffe landfill sites.

What can you apply for?

Grants are available for capital improvement works to public amenity projects.

Examples may include:

- Village halls
- Nature reserves
- Village greens
- Community centres
- Public playgrounds
- Cycle paths
- Sports fields
- Sports facilities
- Country parks

You can apply for grants of between £5,000 and £50,000.

Projects must be available and open to the general public as defined by ENTRUST (the Landfill Communities Fund regulator), as a minimum, for 4 evenings a weeks, or 2 days a week, or 104 days a year.

Where can you find out more?

For more information about the Fund and how to apply, please visit GrantScape's website.


If you have a project idea that you would like to discuss before you apply, please contact the GrantScape team on:

Telephone: 01908 247630

Email: info@grantscape.org.uk

www.grantscape.org.uk





Time For a Break

Codeword

Sudoku

6	3	2	7	8	9	5	4	1
9	8	5	1	3	4	2	7	6
1	7	4	2	6	5	8	3	9
3	1	9	6	4	2	7	8	5
4	2	8	5	9	7	6	1	3
7	5	6	8	1	3	4	9	2
8	6	7	3	5	1	9	2	4
2	4	1	9	7	6	3	5	8
5	9	3	4	2	8	1	6	7

Quick Crossword

Across

1. T A R K I N G

2. H I S

3. C O U N

4. G I L I

5. O R I G I N

6. T A R K I N G

7. H I S

8. C O U N

9. G I L I

10. O R I G I N

11. T A R K I N G

12. H I S

13. C O U N

14. G I L I

15. O R I G I N

16. T A R K I N G

17. H I S

18. C O U N

19. G I L I

20. O R I G I N

21. T A R K I N G

22. H I S

23. C O U N

24. G I L I

25. O R I G I N

26. T A R K I N G

27. H I S

28. C O U N

29. G I L I

30. O R I G I N

31. T A R K I N G

32. H I S

33. C O U N

34. G I L I

35. O R I G I N

36. T A R K I N G

37. H I S

38. C O U N

39. G I L I

40. O R I G I N

41. T A R K I N G

42. H I S

43. C O U N

44. G I L I

45. O R I G I N

46. T A R K I N G

47. H I S

48. C O U N

49. G I L I

50. O R I G I N

51. T A R K I N G

52. H I S

53. C O U N

54. G I L I

55. O R I G I N

56. T A R K I N G

57. H I S

58. C O U N

59. G I L I

60. O R I G I N

61. T A R K I N G

62. H I S

63. C O U N

64. G I L I

65. O R I G I N

66. T A R K I N G

67. H I S

68. C O U N

69. G I L I

70. O R I G I N

71. T A R K I N G

72. H I S

73. C O U N

74. G I L I

75. O R I G I N

76. T A R K I N G

77. H I S

78. C O U N

79. G I L I

80. O R I G I N

81. T A R K I N G

82. H I S

83. C O U N

84. G I L I

85. O R I G I N

86. T A R K I N G

87. H I S

88. C O U N

89. G I L I

90. O R I G I N

91. T A R K I N G

92. H I S

93. C O U N

94. G I L I

95. O R I G I N

96. T A R K I N G

97. H I S

98. C O U N

99. G I L I

100. O R I G I N

Down

1. T A R K I N G

2. H I S

3. C O U N

4. G I L I

5. O R I G I N

6. T A R K I N G

7. H I S

8. C O U N

9. G I L I

10. O R I G I N

11. T A R K I N G

12. H I S

13. C O U N

14. G I L I

15. O R I G I N

16. T A R K I N G

17. H I S

18. C O U N

19. G I L I

20. O R I G I N

21. T A R K I N G

22. H I S

23. C O U N

24. G I L I

25. O R I G I N

26. T A R K I N G

27. H I S

28. C O U N

29. G I L I

30. O R I G I N

31. T A R K I N G

32. H I S

33. C O U N

34. G I L I

35. O R I G I N

36. T A R K I N G

37. H I S

38. C O U N

39. G I L I

40. O R I G I N

41. T A R K I N G

42. H I S

43. C O U N

44. G I L I

45. O R I G I N

46. T A R K I N G

47. H I S

48. C O U N

49. G I L I

50. O R I G I N

51. T A R K I N G

52. H I S

53. C O U N

54. G I L I

55. O R I G I N

56. T A R K I N G

57. H I S

58. C O U N

59. G I L I

60. O R I G I N

61. T A R K I N G

62. H I S

63. C O U N

64. G I L I

65. O R I G I N

66. T A R K I N G

67. H I S

68. C O U N

69. G I L I

70. O R I G I N

71. T A R K I N G

72. H I S

73. C O U N

74. G I L I

75. O R I G I N

76. T A R K I N G

77. H I S

78. C O U N

79. G I L I

80. O R I G I N

81. T A R K I N G

82. H I S

83. C O U N

84. G I L I

85. O R I G I N

86. T A R K I N G

87. H I S

88. C O U N

89. G I L I

90. O R I G I N

91. T A R K I N G

92. H I S

93. C O U N

94. G I L I

95. O R I G I N

96. T A R K I N G

97. H I S

98. C O U N

99. G I L I

100. O R I G I N



Just ask

Making the right decisions can be stressful at the best of times, but we are here to help. Whatever's on your mind, just ask.

TOBIAS COLTON BA(Hons) DipFFS
Principal

TOBIAS COLTON WEALTH MANAGEMENT
Associate Partner Practice of St. James's Place Wealth Management

07468 428 380
tobias.colton@sjpg.co.uk
www.tobiascoltonwealthmanagement.co.uk





ST. JAMES'S PLACE
WEALTH MANAGEMENT

The Partner Practice is an Appointed Representative of and represents only St. James's Place Wealth Management plc (which is authorised and regulated by the Financial Conduct Authority) for the purpose of advising solely on the group's wealth management products and services, more details of which are set out on the group's website www.sjp.co.uk/products. The 'St. James's Place Partnership' and the titles 'Partner' and 'Partner Practice' are marketing terms used to describe St. James's Place representatives.

SJP12026 V1 (04/20)

DIRECTORY OF CONTACTS

For all enquiries, contributions and adverts

Craig Bunday	craig@ascotgraphics.co.uk	07771 538661
Ascot accounts	accounts@ascotgraphics.co.uk	01487 801301

Parish Councils

Sutton	Deirdre McCumiskey (Clerk)	01780 782668
Wansford	Marie Lewis (Clerk)	07899 732049
Sibson-cum-Stibbington	Wendy Gray (Clerk)	01778 441312
Thornhaugh	Deirdre McCumiskey (Clerk)	01780 782668
Water Newton (Parish Meeting)	Caroline Nathan (Chairman)	07989 362514

City Councillor (Wittering Ward) - Gavin Elsey **07738930599**

Churches

Ministers: Thornhaugh & Wansford	01780 782271
Stibbington, Sutton, Castor & Water Newton	01733 380900
admin.castor@btconnect.com	

Churchwardens:

St Andrew's Thornhaugh:	Stuart Foreman	01780 783220
	Liz Kemp	01780 782333
St Mary's Wansford:	Caroline Ashley	01780 782408
	Alan Jones	01780 783205
St John the Baptist, Stibbington	Richard Winfrey	01780 782431
	Carol Lindsay	01780 782338

Friends:

St Mary's & St Andrew's	Caroline Ashley	01780 782408
St Remigius Water Newton	Tony Capon	01733 237500

Other useful contacts

Neighbourhood Policing	101	P'boro City Council	01733 747474
Wansford Surgery	01780 782342	Royal British Legion	01780 782200
(Out of hours	111 option 4)	Stibbington & Wansford WI .	781733
Wansford Pharmacy	01780 781616	Cricket Club	07860 278800
Communicare	01780 470437	Horticultural Society	01780 592514
H'don District Council	01480 388388	Stibbington Centre	01780 782386

Website **www.livingvillagesmagazine.co.uk**

©2022 Living Villages Magazine The contents of this magazine may not be copied, reproduced, distributed, republished, downloaded, displayed, posted or transmitted in any form or by any means without the prior written permission of Living Villages Magazine. You may not distribute, display or copy any of the contents of the pages contained in this magazine to third parties without the prior written permission of Living Villages Magazine. All images shown in this magazine are the property of Living Villages Magazine unless otherwise accredited to another. Images may not be used without the prior written permission of Living Villages Magazine or the accredited owner. Unless otherwise specified, the authors of the literary and artistic works in the pages in this magazine have asserted their moral right pursuant to Section 77 of the Copyright Designs and Patents Act 1988 to be identified as the author of those works. If permission is sort and given, it is expected that all articles/images be accredited to either Living Villages Magazine or the author of said articles/images.

Thinking of replacing your boiler?

IT'S YOUR CALL

Boiler Replacement & Breakdown Service

12 year manufacturer's guarantee on selected boilers
(Terms & Conditions apply)

PlumbCall

Plumbing & heating

Call us on: 01733 243 047

E: advice@plumb-call.co.uk

W: www.plumb-call.co.uk



Gas Safe Register No.8494



*subject to acceptance terms and conditions apply

**HELPS
YOU SAVE
ON FUEL
BILLS**



*“Achieving the best price for our
clients is our highest priority”*

- Local
- Professional
- Experienced *Estate Agents*

NIR

NORTON RICKETT

TOWN | COUNTRY | EQUESTRIAN

www.nortonrickett.co.uk

01780 782 999



Crown

Property Services

- 👑 Electrical & Plumbing
- 👑 Kitchens & Bathrooms
- 👑 Renovations
- 👑 Extensions
- 👑 Windows & Doors
- 👑 Groundworks
- 👑 Landscaping
- 👑 Internal Refurbishment

Old Sulehay Cottages, Sulehay Road, Wansford. PE8 6PA

07766 168659

jonathon@hibbins.me

Village Pizzas

Open Tue – Sat for
Collection / Eat-In at
Leedsgate Farm
4.30pm – 10pm
Or

Delivery 6pm till 10pm

01780 784587

View our Menu at
www.villagepizzas.co.uk



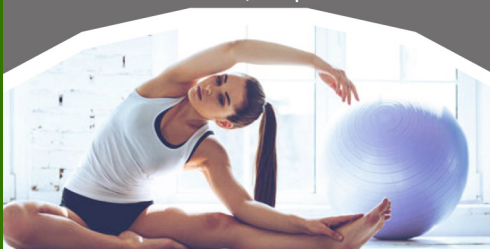
Mat based Pilates and Chairotics
Classes for all levels

MAT BASED PILATES

1 hr classes

Online on Zoom, or in person at
Christie Village Hall (Wansford) and Harringworth Village Hall

Monday, Tuesday, Wednesday and Thursday
£3.50 online / £6 in person



Ease back pain
Strengthen your core, abs and back
Improve sports performance
Exercise without joint pain
Increase your flexibility
Boost brain power and focus

Christie Village Hall:
18:00 Monday / 12:30 Wednesday

Online:
16:45 Monday / 11:30 Thursday
11:00 & 12:30 Tuesday

Justine

BROMAGE FITNESS

Justine Bromage
Fully Qualified Level 3 Pilates Instructor
Level 3 Personal Trainer
RSA to Music Instructor

For more info: justwhim@hotmail.com / 07919106156

Barnlogs
Kiln Dried Hardwood

KILN DRIED HARDWOOD LOGS

Prices from £115 per
loose cubic metre

- Certified 'ready to burn'
- Bagged or loose loads
- Sustainably sourced local hardwood
- Ultimate clean burn with maximum heat output
- Kindling & firelighters available
- Free delivery

**£5 OFF WITH CODE
LIVINGVILLAGES-5**

ORDER ONLINE AT WWW.BARNLOGS.CO.UK

01780 784055 / 07734 439292 / sales@barnlogs.co.uk



Company: Barn Logs
Certificate No: WS468/00001

